

OCT 03 1988

MISSISSIPPI HISTORIC BRIDGE SURVEY

1. Name of Bridge: Leaf River Bridge

2. Location

Code 041
County Greene USGS Quadrangle Neely
Town/vicinity McLain vicinity

UTM coordinates:
Zone 16 Easting 326752 Northing 3444960
Acreage less than one Owner Greene County

Verbal boundary description:
Includes the 18.3 by 221 ft. bridge that spans the Leaf River on the county road north of McLain in Section 20, Township 2 North, Range 8 West.

3. Description

Number of spans 1 Length overall 221 ft. (67.4 m)
Span types:

- (1) Pennsylvania through truss length 221 ft. (67.4m)
- (2) _____ length _____
- (3) _____ length _____

Truss span components:

- Top chords 2 channel beams and 1 plate laced underneath
- End posts 2 channel beams and 1 plate laced underneath
- Bottom chords 2 rectilinear eye-bars
- Hip verticals 2 rectilinear eye-bars and 1 steel cable
- Intermediate posts see diagram
- Diagonals see diagram
- Counters see diagram

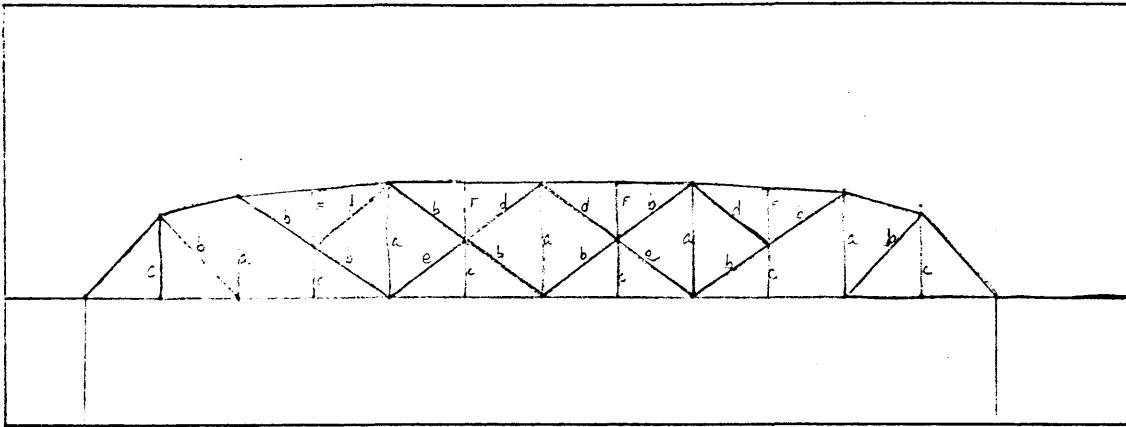
Connections pins
Piers I-beams
Condition good

Date of construction 1907
Builder unknown
Source Miss. State Highway Department Bridge Inventory

4. Location of Legal Description

Courthouse, Office of the Chancery Clerk
Registry of Deeds, etc.: Greene County Courthouse
Street & Number: Highway 63
City, Town: Leakesville State: Mississippi

Profile Sketch



- (a) 2 channel beams laced together (d) 2 rect. eye-bars and
(b) 2 rectilinear eye-bars 1 cylindrical eye-bar
(c) 2 rect. eye-bars and 1 cable (e) 1 cylindrical eye-bar
(f) 4 angle bars laced together

5. Significance

Level of significance:

Local ____; State x ; National ____

Statement of significance:

This bridge consists of one Pennsylvania through truss span. It is significant in that it embodies "the distinctive characteristics of a type, period, or method of construction."

6. Form prepared by:

Jack D. Elliott, Jr.
Historical Archaeologist
Division of Historic Preservation
Mississippi Department of Archives and History
P.O. Box 571
Jackson, Mississippi 39205



Historic Bridges of Mississippi TR

Leaf River Bridge

Greene County, Vicinity of McLain,
Mississippi

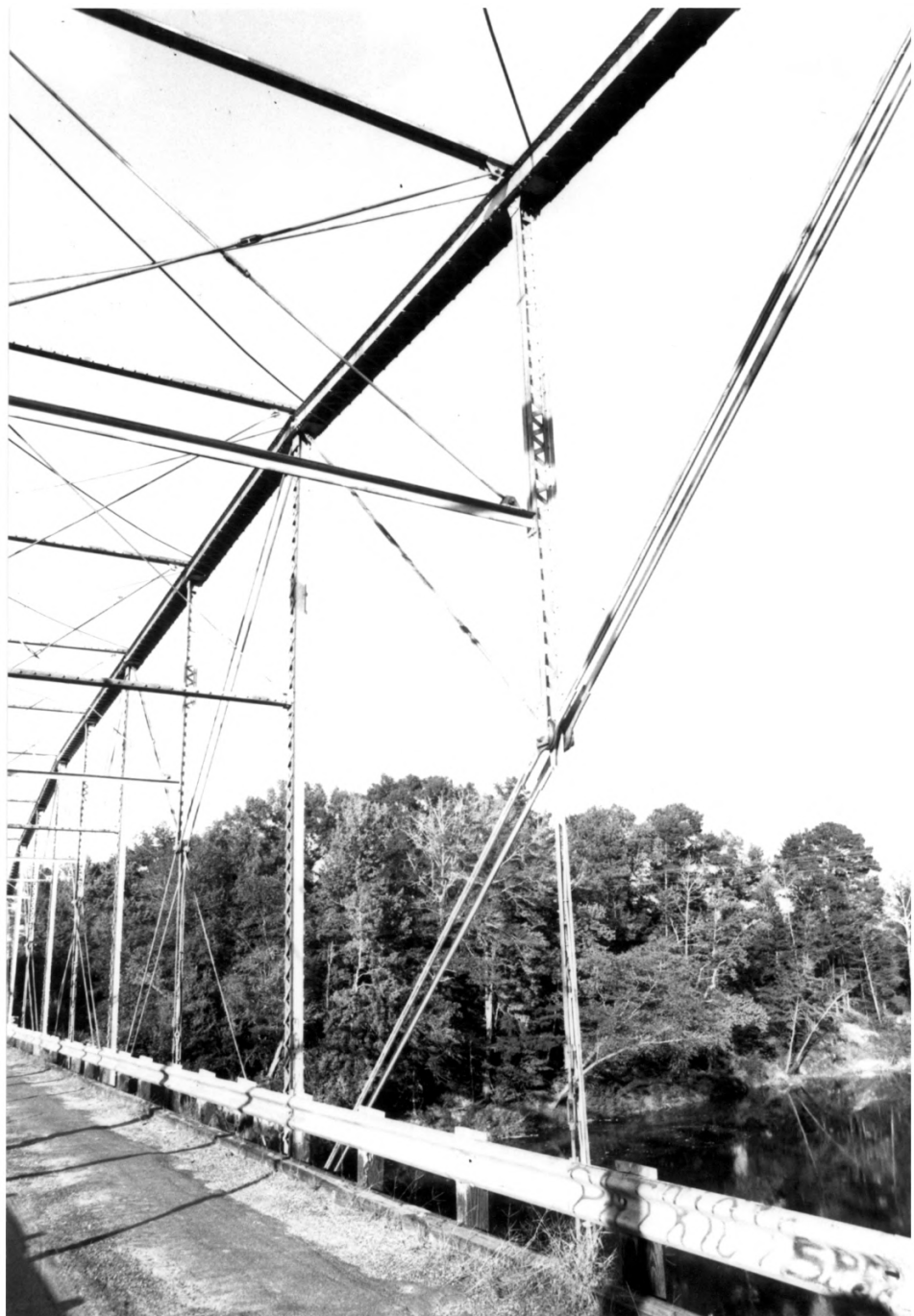
Jack D. Elliott, Jr.

October 19, 1986

Mississippi Department of Archives &
History

View to Northwest

No. 13 of 35



Historic Bridges of Mississippi TR

Leaf River Bridge

Greene County

Vicinity of McLain, Mississippi

Jack D. Elliott, Jr.

Mississippi Department of Archives &
History

View to East

No. 14 of 35