

UNITED STATES DEPARTMENT OF THE INTERIOR
NATIONAL PARK SERVICE**NATIONAL REGISTER OF HISTORIC PLACES
INVENTORY -- NOMINATION FORM**

FOR FEDERAL PROPERTIES

FOR NPS USE ONLY

RECEIVED OCT 14 1980

DATE ENTERED

SEE INSTRUCTIONS IN *HOW TO COMPLETE NATIONAL REGISTER FORMS*
TYPE ALL ENTRIES -- COMPLETE APPLICABLE SECTIONS**1 NAME**

HISTORIC

U.S. Post Office -- Hattiesburg, Mississippi

AND/OR COMMON

2 LOCATION

STREET & NUMBER

115 W. Pine Street

NOT FOR PUBLICATION

CITY, TOWN

Hattiesburg

CONGRESSIONAL DISTRICT

5

VICINITY OF

STATE

Mississippi

CODE

28

COUNTY

Forrest

CODE

35

2 CLASSIFICATION**CATEGORY**☐ DISTRICT☐ BUILDING(S)☒ STRUCTURE☐ SITE☐ OBJECT**OWNERSHIP**☒ PUBLIC☐ PRIVATE☐ BOTH**PUBLIC ACQUISITION**☐ IN PROCESS☐ BEING CONSIDERED**STATUS**☒ OCCUPIED☐ UNOCCUPIED☐ WORK IN PROGRESS**ACCESSIBLE**☒ YES: RESTRICTED☐ YES: UNRESTRICTED☐ NO**PRESENT USE**☐ AGRICULTURE☐ COMMERCIAL☐ EDUCATIONAL☐ ENTERTAINMENT☒ GOVERNMENT☐ INDUSTRIAL☐ MILITARY☐ MUSEUM☐ PARK☐ PRIVATE RESIDENCE☐ RELIGIOUS☐ SCIENTIFIC☐ TRANSPORTATION☐ OTHER**4 AGENCY**

REGIONAL HEADQUARTERS: (If applicable)

Memphis Field Real Estate and Buildings Office

United States Postal Service

STREET & NUMBER

1 North Front Street

CITY, TOWN

Memphis

VICINITY OF

STATE

TN 38103

5 LOCATION OF LEGAL DESCRIPTION

COURTHOUSE,

REGISTRY OF DEEDS, ETC.

Chancery Clerk's Office -- Forrest County Courthouse

STREET & NUMBER

P. O. Box 951

CITY, TOWN

Hattiesburg

STATE

Mississippi

6 REPRESENTATION IN EXISTING SURVEYS

TITLE

DATE

-None-

☐ FEDERAL ☐ STATE ☐ COUNTY ☐ LOCALDEPOSITORY FOR
SURVEY RECORDS

CITY, TOWN

STATE

7 DESCRIPTION

CONDITION

☐ EXCELLENT
☒ GOOD
☐ FAIR

☐ DETERIORATED
☐ RUINS
☐ UNEXPOSED

CHECK ONE

☒ UNALTERED
☐ ALTERED

CHECK ONE

☒ ORIGINAL SITE
☐ MOVED DATE _____

DESCRIBE THE PRESENT AND ORIGINAL (IF KNOWN) PHYSICAL APPEARANCE

The United States Post Office in Hattiesburg is located in the central business district approximately one block southeast of the Forrest County Courthouse. It is Art Deco in style. The exterior building material is limestone with a granite-clad foundation which rises to the main floor level. The elevated main floor is made accessible by a wide flight of granite steps with aluminum railings. The stairway is flanked by two large limestone abutments upon which rest two free-standing lantern standards in the art deco style. The exterior walls rise to one full story in height with a partial mezzanine level above. The roof is hidden behind a massive stone parapet and is covered in tiles. The street facade consists of nine bays reading window-window-pylon-door-door-door-pylon-window-window. The three central doorways each have separate entry vestibules and are highlighted by deeply splayed reveals, decorative metal grillwork over large transoms with carved stone panels above and below, and a three-sided stone overhang above set into the deep reveal and with stylized molding along its edges. Above the canopies, "United States Post Office" is carved into the main facade in large letters. The two limestone pylons rise to the same height as the three central bays. They have decorative metal grill-work panels behind the lamp standards and, higher up, two carved panels in low relief with styled carvings of eagles in the lower and a representation of the air mail service in the upper panels. The flanking bays are lower than the central section and also have deeply splayed reveals with decorative metal grill-work panels above at the mezzanine level. Windows on the facade are metal casement type with thin mullions and three by three lights. Additional lights are located below the sash and another large window is located above the metal transom. The north facade consists of seven bays of windows and the south facade of two bays of windows toward the rear with a door by matching those on the front toward the southeast corner. It, too, has a separate entry vestibule and platform occupy nearby the whole of the rear (west) facade. A full basement level exists.

The interior plan (see attached plan drawings) consists of a large C-shaped lobby with the postmaster's office on the northeast corner. The northwest corner is reserved for the postal inspector and other governmental offices. The remaining area is given over to a large workroom. A partial mezzanine level containing a lookout cuts across the workroom from the vault area to the north facade. The lobby contains a polychrome marble floor arranged in long bands, marble wainscoting, several decorative, cast metal panels set into the wall, a stenciled ceiling design around the perimeter, and seven octagonal ceiling light fixtures in the art deco style. Three permanent cast metal tables on marble bases grace the lobby's entrance. The screenline has been altered. A passageway above the entry vestibules has decorative metal grillwork on the balustrades. This interior is quite exceptional.

8 SIGNIFICANCE

PERIOD	AREAS OF SIGNIFICANCE -- CHECK AND JUSTIFY BELOW				
<input type="checkbox"/> PREHISTORIC	<input type="checkbox"/> ARCHEOLOGY-PREHISTORIC	<input type="checkbox"/> COMMUNITY PLANNING	<input type="checkbox"/> LANDSCAPE ARCHITECTURE	<input type="checkbox"/> RELIGION	
<input type="checkbox"/> 1400-1499	<input type="checkbox"/> ARCHEOLOGY-HISTORIC	<input type="checkbox"/> CONSERVATION	<input type="checkbox"/> LAW	<input type="checkbox"/> SCIENCE	
<input type="checkbox"/> 1500-1599	<input type="checkbox"/> AGRICULTURE	<input type="checkbox"/> ECONOMICS	<input type="checkbox"/> LITERATURE	<input type="checkbox"/> SCULPTURE	
<input type="checkbox"/> 1600-1699	<input checked="" type="checkbox"/> ARCHITECTURE	<input type="checkbox"/> EDUCATION	<input type="checkbox"/> MILITARY	<input type="checkbox"/> SOCIAL/HUMANITARIAN	
<input type="checkbox"/> 1700-1799	<input type="checkbox"/> ART	<input type="checkbox"/> ENGINEERING	<input type="checkbox"/> MUSIC	<input type="checkbox"/> THEATER	
<input type="checkbox"/> 1800-1899	<input type="checkbox"/> COMMERCE	<input type="checkbox"/> EXPLORATION/SETTLEMENT	<input type="checkbox"/> PHILOSOPHY	<input type="checkbox"/> TRANSPORTATION	
<input checked="" type="checkbox"/> 1900-	<input type="checkbox"/> COMMUNICATIONS	<input type="checkbox"/> INDUSTRY	<input checked="" type="checkbox"/> POLITICS/GOVERNMENT	<input type="checkbox"/> OTHER (SPECIFY)	
		<input type="checkbox"/> INVENTION			

SPECIFIC DATES	July, 1934	BUILDER/ARCHITECT	Juan G. Landry & Rathbone Depuys Matthew Rauen Construction Co.,
----------------	------------	-------------------	---

STATEMENT OF SIGNIFICANCE

Chicago, IL

Politics/Government

The first Public Buildings Act of 1913 and the second Public Building Act of 1926 were supplemented in 1933 by Congress, on the urging of Franklin Delano Roosevelt, with the Federal Emergency Administration of Public Works. Between 1933 and 1941 a tremendous amount of construction resulted in the United States, including four post offices in Mississippi constructed under the 1926 Act and thirty-two post offices in Mississippi constructed under 1933 PWA legislation.

The U.S. Post Office in Hattiesburg, Mississippi, built in 1934, is significant as being one of thirty-two post offices constructed in the state with Public Works Administration funds during the Great Depression. It was designed by Juan G. Landry and Rathbone Depuys. (See also "Federal Construction Work, 1913-1941").

Architecture

Unlike the locations of the other thirty-five post offices contained within this thematic nomination, Hattiesburg is not a small town. Consequently its significance as a governmental public building is not so great. However, in terms of architectural style it is extraordinary. A fine example of the Style Moderne, its exterior form is prismatic and sculptural and features extraordinary window grillwork and lamp standards flanking the main entry. The interior is equally refined and equally representative of the Style Moderne.

9 MAJOR BIBLIOGRAPHICAL REFERENCES

See bibliography attached to narrative entitled "The Treasury Department's Section of the Fine Arts Program" and "Federal Construction Work 1913-1941."

ACREAGE NOT VERIFIED

10 GEOGRAPHICAL DATA

UTM NOT VERIFIED

ACREAGE OF NOMINATED PROPERTY 1/4 acre

UTM REFERENCES

A 1 6 2 8 2 0 0 0 3 4 6 7 9 0 0
ZONE EASTING NORTHING

B
ZONE EASTING NORTHING

C

D

VERBAL BOUNDARY DESCRIPTION

The property nominated is indicated by the crossed ink lines on the accompanying U.S.G.S. map entitled Hattiesburg Quadrangle.

LIST ALL STATES AND COUNTIES FOR PROPERTIES OVERLAPPING STATE OR COUNTY BOUNDARIES

STATE CODE COUNTY CODE

STATE CODE COUNTY CODE

11 FORM PREPARED BY

NAME / TITLE

Michael W. Fazio, William E. Parrish,

ORGANIZATION

Tomas Blackwell, Curtis Franks

DATE

October 1, 1979

STREET & NUMBER

40 Eutaw Street

TELEPHONE

(601) 323-3451

CITY OR TOWN

Starkville

STATE

Mississippi

12 CERTIFICATION OF NOMINATION

STATE HISTORIC PRESERVATION OFFICER RECOMMENDATION

YES

NO

NONE

STATE HISTORIC PRESERVATION OFFICER SIGNATURE

In compliance with Executive Order 11593, I hereby nominate this property to the National Register, certifying that the State Historic Preservation Officer has been allowed 90 days in which to present the nomination to the State Review Board and to evaluate its significance. The evaluated level of significance is National State Local.

FEDERAL REPRESENTATIVE SIGNATURE

TITLE

DATE

FOR NPS USE ONLY

I HEREBY CERTIFY THAT THIS PROPERTY IS INCLUDED IN THE NATIONAL REGISTER

Beth Grawe

DATE 4/21/83

DIRECTOR, OFFICE OF ARCHEOLOGY AND HISTORIC PRESERVATION

ATTEST:

DATE

KEEPER OF THE NATIONAL REGISTER

UNITED STATES DEPARTMENT OF THE INTERIOR
NATIONAL PARK SERVICE

**NATIONAL REGISTER OF HISTORIC PLACES
INVENTORY -- NOMINATION FORM**

FOR NPS USE ONLY

RECEIVED OCT 14 1980

DATE ENTERED

CONTINUATION SHEET

ITEM NUMBER

PAGE

HATTIESBURG

A part of Lot Eleven (11) in Block One Hundred Sixty Five (165) of the Crittenden Survey of the said City of Hattiesburg, being a strip of land with a frontage of twenty (20) feet on the western line of West Pine Street and extending back between parallel lines eighty five (85) feet. (Recorded Book 42, Page 529-30, 3 March 1932) AND Entire Lot Twelve (12) of Block One Hundred Sixty Five (165) of and according to the Crittenden Survey of the said City of Hattiesburg (Recorded Book 42, Page 528-9, 3 March 1932) AND Forty five (45) feet off of the southern or southwestern side of Lot Eleven (11) in Block One Hundred Sixty Five (165) of the Crittenden Survey of the said City of Hattiesburg, said parcel of land having a frontage of forty-five (45) feet on the western side of West Pine Street, and extending back between parallel lines one hundred fifty (150) feet (Recorded Book 42, Page 532-3, 3 March 1932) AND A part of Lot Eleven (11) in Block 165 of the Crittenden Survey of the said City of Hattiesburg, being a strip of land with a frontage of twenty (20) feet on the western side of West Pine Street and extending back between parallel lines eighty-five (85) feet (Recorded Book 42, page 527-28, 3 March 1932) AND A part of Lot Eleven (11) in Block 165 - SAME SURVEY AS ABOVE).... being a parcel thereof forty (40) feet by fifty (50) feet, fronting on a public alley fifty (50) feet (Recorded Book 42, Page 525, 3 March 1932) AND A strip of land forty-five (45) feet wide off of the southern or southwestern side of Lot Eleven (11) in Block 165 of SAME SURVEY ETC. ABOVE said strip of land having a frontage of forty-five (45) feet on the western side of West Pine Street and extending back between parallel lines one hundred fifty (150) feet (Recorded Book 42, Page 531-32, 3 March 1932).

BUILDING EVALUATION REPORT

U. S. Post Office
BUILDING: Hattiesburg, Mississippi

DATE OF REPORT:

CONTENTS

PAGE

REGIONAL MAP

PHOTOGRAPHS

ASSIGNMENT PLANS

PERMITS

ANALYSIS AND RECOMMENDATION

MACHINE PRODUCED BER

BUILDING DESCRIPTION RECORD

BUILDING R&I WORK ITEM INVENTORY

BUILDING R&I WORK ITEMS AWARDED/COMPLETED

BUILDING OCCUPANCY RECORD

BUILDING EQUIPMENT DATA RECORD

OCT 14 1980

REGION - 4 R.I.E. BUILDINGS
PUBLIC BUILDINGS SERVICE
GENERAL SERVICES ADMINISTRATION

SCALE: ONE INCH EQUALS APPROX. 50 MILES

CITIES HAVING MORE THAN ONE R.I.G.L. BUILDING

ALABAMA
BIRMINGHAM
- POST OFFICE & COURT HOUSE
- BIRMINGHAM STA. POST OFFICE

ALASKA
ANCHORAGE
- POST OFFICE
- POST OFFICE & COURT HOUSE
- POST OFFICE & COURT HOUSE

ARIZONA
PHOENIX
- POST OFFICE & COURT HOUSE
- POST OFFICE & COURT HOUSE
- POST OFFICE & COURT HOUSE

ARKANSAS
LITTLE ROCK
- POST OFFICE & COURT HOUSE
- POST OFFICE & COURT HOUSE
- POST OFFICE & COURT HOUSE

CALIFORNIA
SAN FRANCISCO
- POST OFFICE & COURT HOUSE
- POST OFFICE & COURT HOUSE
- POST OFFICE & COURT HOUSE

COLORADO
DENVER
- POST OFFICE & COURT HOUSE
- POST OFFICE & COURT HOUSE
- POST OFFICE & COURT HOUSE

CONNECTICUT
HARTFORD
- POST OFFICE & COURT HOUSE
- POST OFFICE & COURT HOUSE
- POST OFFICE & COURT HOUSE

DELAWARE
DOVER
- POST OFFICE & COURT HOUSE
- POST OFFICE & COURT HOUSE
- POST OFFICE & COURT HOUSE

FLORIDA
TALLAHASSEE
- POST OFFICE & COURT HOUSE
- POST OFFICE & COURT HOUSE
- POST OFFICE & COURT HOUSE

GEORGIA
ATLANTA
- POST OFFICE & COURT HOUSE
- POST OFFICE & COURT HOUSE
- POST OFFICE & COURT HOUSE

ILLINOIS
CHICAGO
- POST OFFICE & COURT HOUSE
- POST OFFICE & COURT HOUSE
- POST OFFICE & COURT HOUSE

INDIANA
INDIANAPOLIS
- POST OFFICE & COURT HOUSE
- POST OFFICE & COURT HOUSE
- POST OFFICE & COURT HOUSE

IOWA
DES MOINES
- POST OFFICE & COURT HOUSE
- POST OFFICE & COURT HOUSE
- POST OFFICE & COURT HOUSE

KANSAS
TOPEKA
- POST OFFICE & COURT HOUSE
- POST OFFICE & COURT HOUSE
- POST OFFICE & COURT HOUSE

KENTUCKY
LOUISVILLE
- POST OFFICE & COURT HOUSE
- POST OFFICE & COURT HOUSE
- POST OFFICE & COURT HOUSE

LOUISIANA
NEW ORLEANS
- POST OFFICE & COURT HOUSE
- POST OFFICE & COURT HOUSE
- POST OFFICE & COURT HOUSE

MAINE
PORTLAND
- POST OFFICE & COURT HOUSE
- POST OFFICE & COURT HOUSE
- POST OFFICE & COURT HOUSE

MARYLAND
BALTIMORE
- POST OFFICE & COURT HOUSE
- POST OFFICE & COURT HOUSE
- POST OFFICE & COURT HOUSE

MASSACHUSETTS
BOSTON
- POST OFFICE & COURT HOUSE
- POST OFFICE & COURT HOUSE
- POST OFFICE & COURT HOUSE

MICHIGAN
LANSING
- POST OFFICE & COURT HOUSE
- POST OFFICE & COURT HOUSE
- POST OFFICE & COURT HOUSE

MINNESOTA
MINNEAPOLIS
- POST OFFICE & COURT HOUSE
- POST OFFICE & COURT HOUSE
- POST OFFICE & COURT HOUSE

MISSISSIPPI
JACKSON
- POST OFFICE & COURT HOUSE
- POST OFFICE & COURT HOUSE
- POST OFFICE & COURT HOUSE

MISSOURI
ST. LOUIS
- POST OFFICE & COURT HOUSE
- POST OFFICE & COURT HOUSE
- POST OFFICE & COURT HOUSE

MONTANA
HELENA
- POST OFFICE & COURT HOUSE
- POST OFFICE & COURT HOUSE
- POST OFFICE & COURT HOUSE

NEBRASKA
LINCOLN
- POST OFFICE & COURT HOUSE
- POST OFFICE & COURT HOUSE
- POST OFFICE & COURT HOUSE

NEVADA
CARSON CITY
- POST OFFICE & COURT HOUSE
- POST OFFICE & COURT HOUSE
- POST OFFICE & COURT HOUSE

NEW HAMPSHIRE
CONCORD
- POST OFFICE & COURT HOUSE
- POST OFFICE & COURT HOUSE
- POST OFFICE & COURT HOUSE

NEW JERSEY
TRENTON
- POST OFFICE & COURT HOUSE
- POST OFFICE & COURT HOUSE
- POST OFFICE & COURT HOUSE

NEW MEXICO
SANTA FE
- POST OFFICE & COURT HOUSE
- POST OFFICE & COURT HOUSE
- POST OFFICE & COURT HOUSE

NEW YORK
ALBANY
- POST OFFICE & COURT HOUSE
- POST OFFICE & COURT HOUSE
- POST OFFICE & COURT HOUSE

NORTH CAROLINA
RALEIGH
- POST OFFICE & COURT HOUSE
- POST OFFICE & COURT HOUSE
- POST OFFICE & COURT HOUSE

NORTH DAKOTA
GRAND FORK
- POST OFFICE & COURT HOUSE
- POST OFFICE & COURT HOUSE
- POST OFFICE & COURT HOUSE

OHIO
COLUMBUS
- POST OFFICE & COURT HOUSE
- POST OFFICE & COURT HOUSE
- POST OFFICE & COURT HOUSE

OKLAHOMA
TULSA
- POST OFFICE & COURT HOUSE
- POST OFFICE & COURT HOUSE
- POST OFFICE & COURT HOUSE

OREGON
PORTLAND
- POST OFFICE & COURT HOUSE
- POST OFFICE & COURT HOUSE
- POST OFFICE & COURT HOUSE

PENNSYLVANIA
PHILADELPHIA
- POST OFFICE & COURT HOUSE
- POST OFFICE & COURT HOUSE
- POST OFFICE & COURT HOUSE

RHODE ISLAND
PROVIDENCE
- POST OFFICE & COURT HOUSE
- POST OFFICE & COURT HOUSE
- POST OFFICE & COURT HOUSE

SOUTH CAROLINA
COLUMBIA
- POST OFFICE & COURT HOUSE
- POST OFFICE & COURT HOUSE
- POST OFFICE & COURT HOUSE

SOUTH DAKOTA
SIOUX FALLS
- POST OFFICE & COURT HOUSE
- POST OFFICE & COURT HOUSE
- POST OFFICE & COURT HOUSE

TENNESSEE
MEMPHIS
- POST OFFICE & COURT HOUSE
- POST OFFICE & COURT HOUSE
- POST OFFICE & COURT HOUSE

TEXAS
HOUSTON
- POST OFFICE & COURT HOUSE
- POST OFFICE & COURT HOUSE
- POST OFFICE & COURT HOUSE

UTAH
SALT LAKE CITY
- POST OFFICE & COURT HOUSE
- POST OFFICE & COURT HOUSE
- POST OFFICE & COURT HOUSE

VERMONT
MONTPELIER
- POST OFFICE & COURT HOUSE
- POST OFFICE & COURT HOUSE
- POST OFFICE & COURT HOUSE

VIRGINIA
RICHMOND
- POST OFFICE & COURT HOUSE
- POST OFFICE & COURT HOUSE
- POST OFFICE & COURT HOUSE

WASHINGTON
SEATTLE
- POST OFFICE & COURT HOUSE
- POST OFFICE & COURT HOUSE
- POST OFFICE & COURT HOUSE

WEST VIRGINIA
CHARLESTON
- POST OFFICE & COURT HOUSE
- POST OFFICE & COURT HOUSE
- POST OFFICE & COURT HOUSE

WISCONSIN
MILWAUKEE
- POST OFFICE & COURT HOUSE
- POST OFFICE & COURT HOUSE
- POST OFFICE & COURT HOUSE

WYOMING
CHEYENNE
- POST OFFICE & COURT HOUSE
- POST OFFICE & COURT HOUSE
- POST OFFICE & COURT HOUSE

167.07

167.03

DRIVEWAY

167.82'

169.23'

16" OAK
GRASS

17'-0"

168.90'

EMERGENCY
MAIL PLATFORM

MAILING PLATFORM

169.07'

40'-0"

9'-3"

168.15'

167.88'

GRASS
WATER MAIN
GAS MAIN

GRASS

UNITED STATES POST OFFICE ETC.

FIRST FLOOR ELEV. 171.65'
BASEMENT ELEV. 161.15'

144'-6"

22'-6"

14' MAILBOX
CUBICLE
AREA

GRASS

168.40'

167.82'

GRASS

167.72'

167.32'

168.32'

PROPERTY LINE 201.1'

SIDEWALK

FORREST STREET

SIDEWALK

CONCRETE ALLEY DRIVE

PROPERTY LINE 150'

PRIVATE ALLEY

ASSIGNMENT
APPROACH PLAN

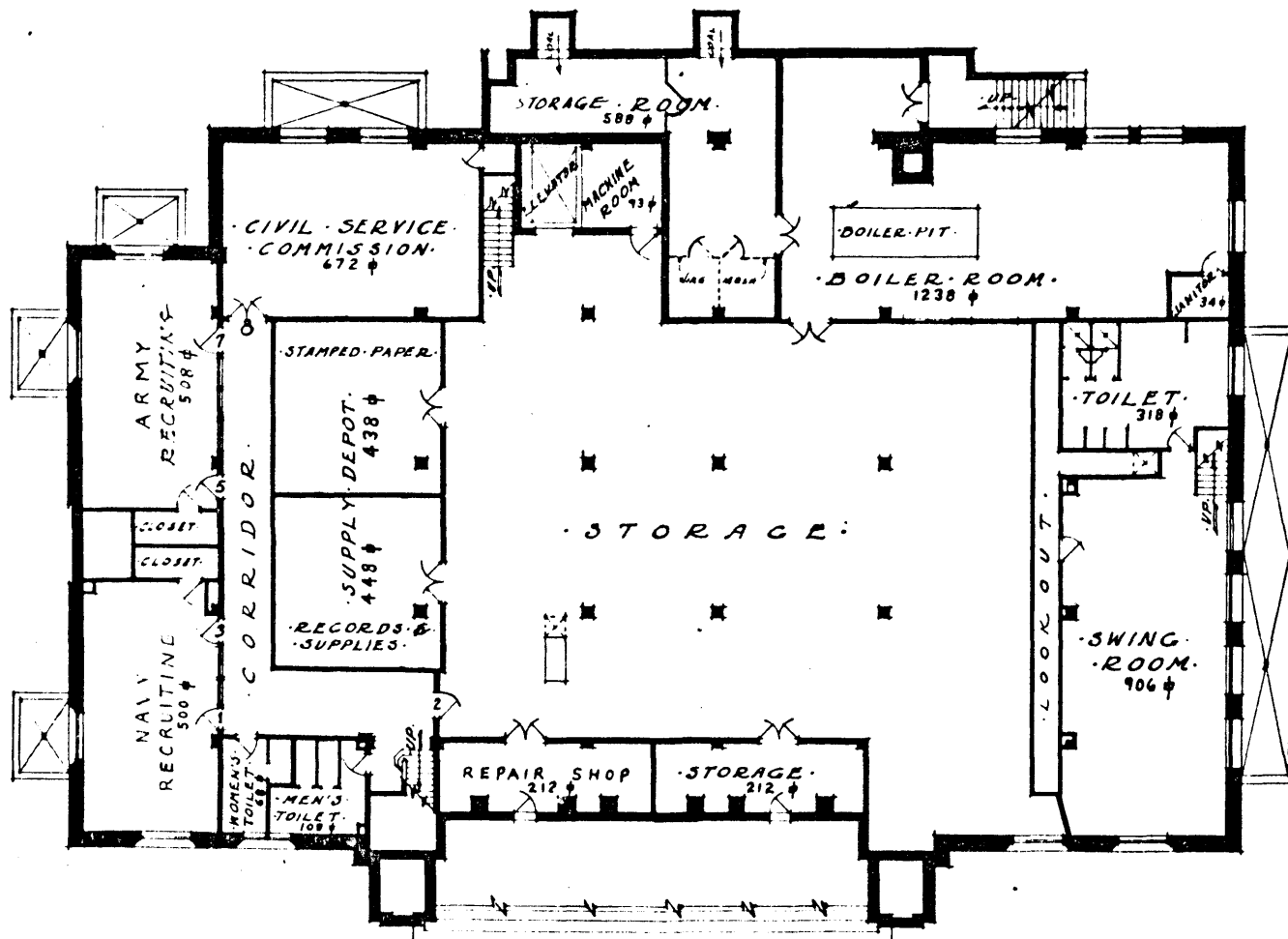
SCALE 1/16" = 1'-0"

WEST PINE STREET

NET ASSIGNABLE SPACE 13,310 SQ. FT.
GROSS FLOOR AREA 24,710 SQ. FT.

UNITED STATES POST OFFICE
HATTIESBURG MISSISSIPPI
DRAWING NO. AS-P
DRAWN BY J.W.M.
DATE DEC. 13. 1933

REVISIONS
5-24-61



ASSIGNMENT BASEMENT PLAN

SCALE — $\frac{3}{16}'' = 1'-0''$

NET P.O. AREAS	2380	SQ. FT.
NET AGENCY AREAS	2170	" "
NET ASSIGNABLE AREA	4550	" "

UNITED STATES POST OFFICE
HATTIESBURG — MISSISSIPPI
DRAWING NO — AS-B
DRAWN BY — J. W. M.
DATE — DEC. 13. 1933

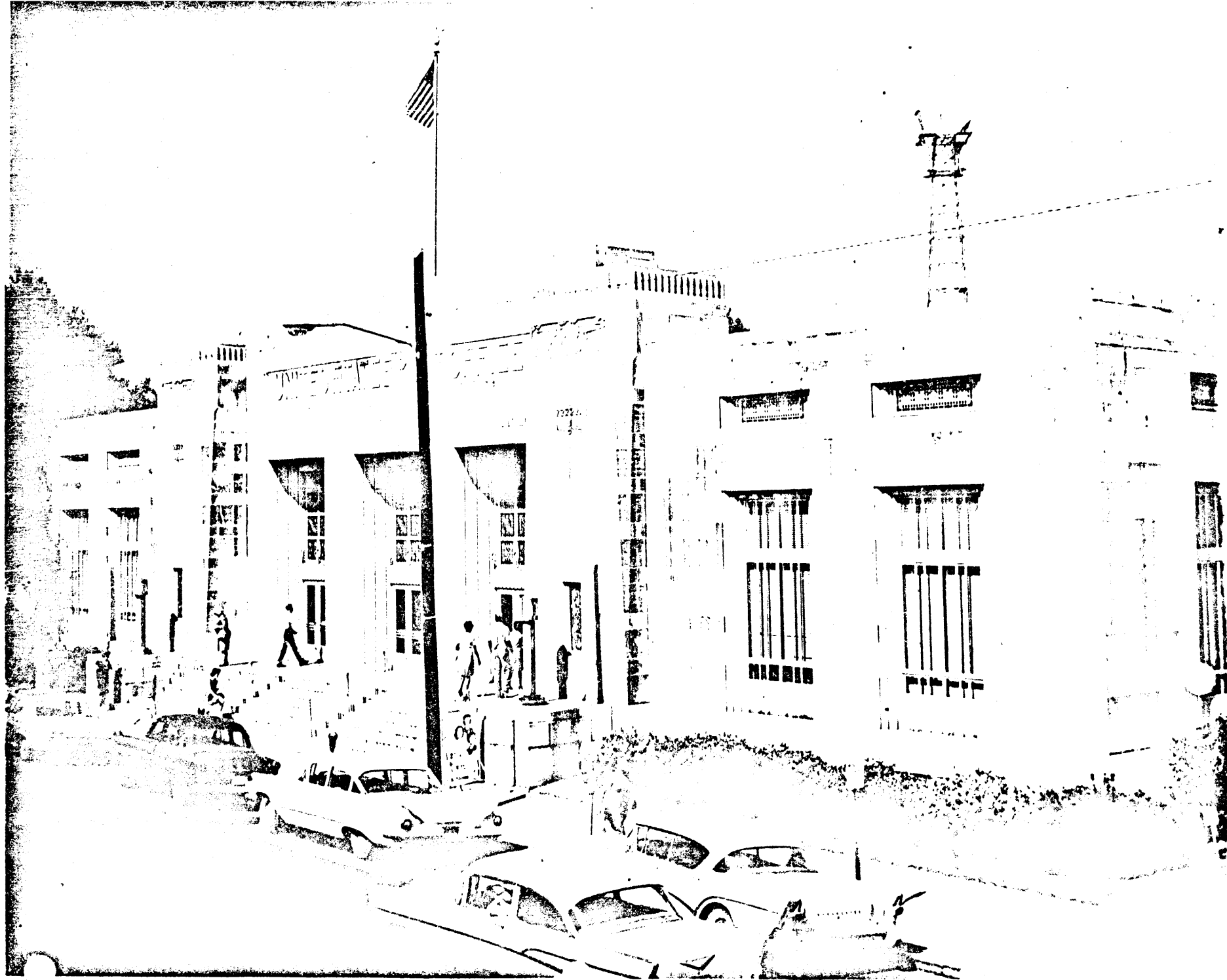
REVISIONS
5-24-61

[illegible]

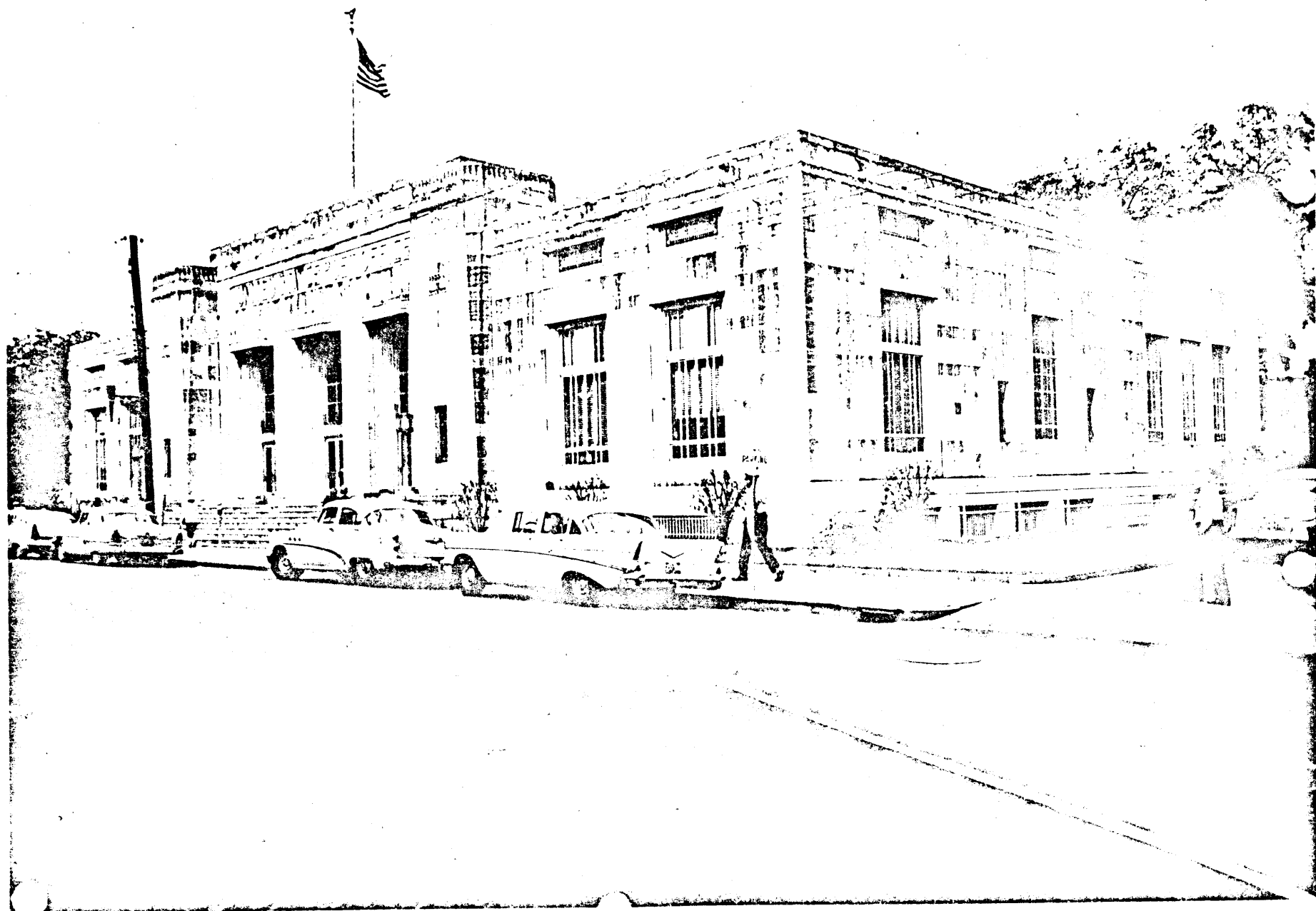
SCALE — 1/16" = 1'-0"

8725 SQ. FT.
35 " "
8760 " "

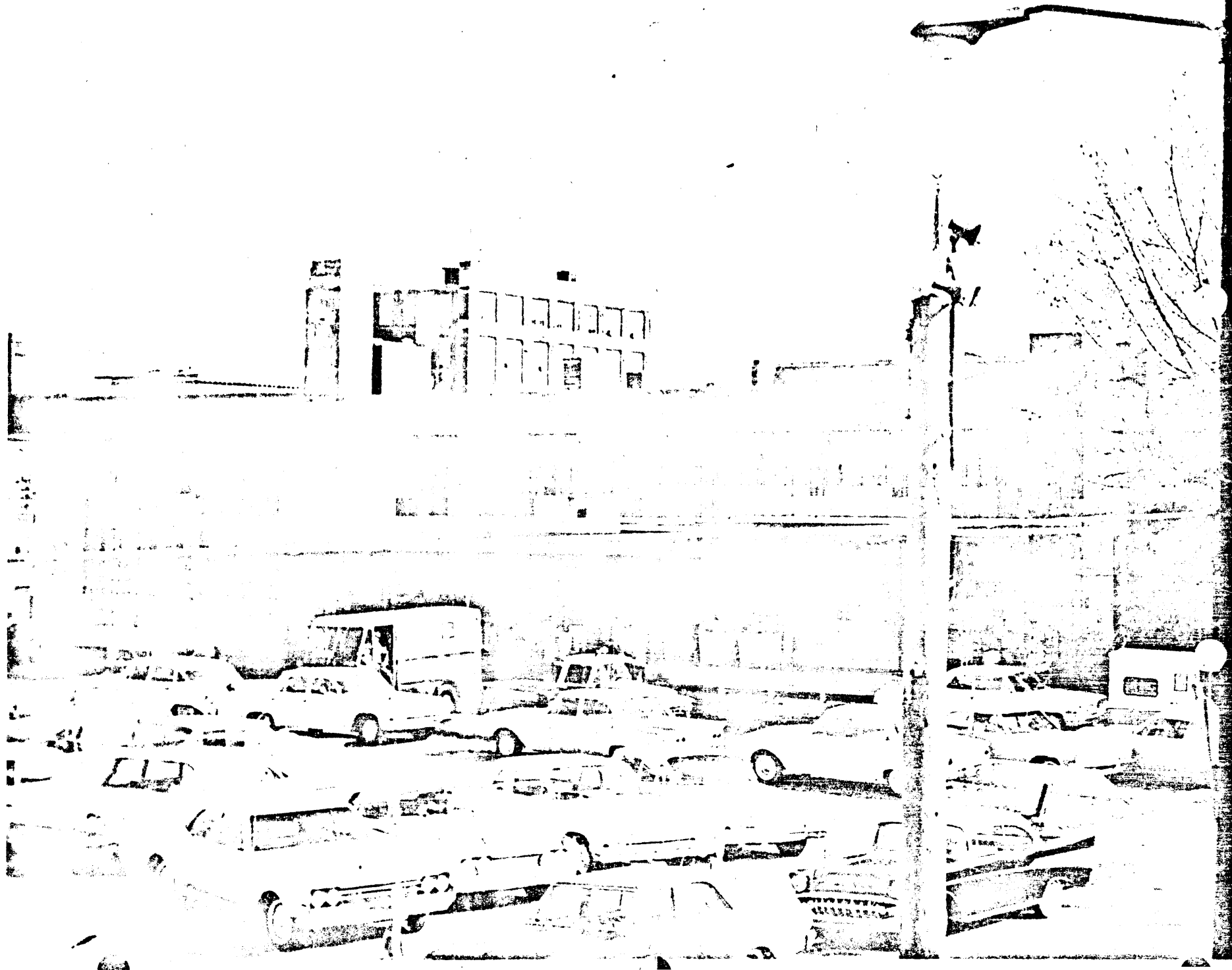
REVISIONS
5-24-61
10-18-62



OCT 14 1980



OCT 14 1980





91 DATE INSPECTED --- OCT 69

BUILDING DATA
AS OF DATE03 U S COURTHOUSE
04 W PINE AND FORREST STS
05 HATTIESBURG MISSISSIPPI01 CITY CODE 1050
02 FACILITY CODE
06 CONGRESSIONAL
07 COUNTY CODE 35

BLOCK DESCRIPTION

12	LAND AREA -SQ FEET.....	14,777
13	LAND COST.....	\$15,000
14	INITIAL ACQUISITION -YEAR.....	1907
15	LAST ACQUISITION -YEAR.....	0000
16	BUILDING ACQUIRED BY GSA -YEAR.....	0000
17	BUILDING COMPLETED -YEAR.....	1911
18	FLOORS, MAXIMUM -NUMBER.....	2
19	BUILDING COST.....	\$132,000
20	BUILDING REPLACEMENT COST.....	\$143,000
21	RETENTION LIFE -YEARS.....	5
22	FAIR MARKET VALUE.....	
23	GROSS BUILDING AREA -SQ FEET.....	9,203
24	CIRCULATION AREA -SQ FEET.....	1,079
25	MECHANICAL AREA -SQ FEET.....	2,480
26	NET AREA ASSIGNABLE BY GSA -SQ FEET.....	4,088
27	NET AREA ASSIGNABLE BY OTHER -SQ FEET.....	
28	BUILDING -TYPE.....	OBSOLETE - COURTHOUSE
29	STRUCTURE -TYPE.....	WALL BEARING
30	FLOOR CONST. -TYPE.....	STEEL BEAMS - SOLID SLABS
31	FOUNDATION -TYPE.....	SPREAD FOOTINGS
32	EXTERIOR SURFACE -TYPE.....	STONE
33	EXTERIOR SURFACE INSTALLED -YEAR.....	1911
34	EXTERIOR SURFACE -PERCENT COVERED.....	90%
35	LIGHT COURTS OPEN -NUMBER.....	
36	LIGHT COURTS CLOSED -NUMBER.....	
37	SKYLIGHTS -NUMBER.....	
38	EMERGENCY EGRESS -STATUS.....	ADEQUATE
39	HIST PRESERVE -.....	IS NOT POTENTIAL FOR NATIONAL REGISTER
40	LANDSCAPING -STATUS.....	ADEQUATE
41	PARKING SPACES -NUMBER.....	8
42	BLDG OCCUPANTS PER PARKING SPACE -NUMBER.....	3
43	FLAGPOLES -NUMBER.....	1
44	ROOF AREA -SQ FEET.....	6,400
45	ROOF -TYPE.....	ROOFING TILE
46	BIRDPROOFING -STATUS.....	NOT REQUIRED
47	TYPE OF FUEL.....	
48	PLUMBING SYSTEM -STATUS.....	ADEQUATE
49	RESTROOMS, MALE -NUMBER.....	5
50	RESTROOMS, FEMALE -NUMBER.....	2
51	WATERHEATER -TYPE.....	GAS
52	INCINERATOR.....	NO

OCT 14 1980

OPTION REPORT

30 SEP 69

REGION

04

BUILDING

230025

90

AREA CODE

2

TRICT 5
RBN CENTER

08 BUILDING CLASS 130

09 OPERATING AGENCY G S A

10 INSPECTION CYCLE 4 YEARS

11 FLOOD CONTROL

BLOCK

DESCRIPTION

53	KW POWER.....	125	WATTS PER NET SQ FT.....	30.58
54	SERVICE MAINS -NUMBER.....			1
55	UNDERFLOOR DUCTS.....			NO
56	TYPE SERVICE.....	3 PHASE 4 WIRE	120/208 VOLT	
57	EMERGENCY POWER.....			NO
58	FIRE ALARM -STATUS.....			NOT REQUIRED
59	FIRE SPRINKLER -STATUS.....			NOT REQUIRED
60	FALLOUT SHELTER.....			YES
61	ELEVATORS -NUMBER.....			
62	ESCALATORS -NUMBER.....			
63	DUMBWAITERS -NUMBER.....			
64	SIDEWALK LIFTS -NUMBER.....			
65	CAFETERIAS -NUMBER.....			
66	TOTAL SEATING CAPACITY -NUMBER.....			
67	TOTAL VENDING STANDS -NUMBER.....			
68	VENDING STANDS BLIND OPERATED -NUMBER.....			
69	CENTRAL AIR CONDITIONING.....			NO
70	WINDOW AIR CONDITIONERS -TOTAL TONNAGE.....			2
71	PACKAGE AIR CONDITIONING -TOTAL TONNAGE.....			18
72	EVAPORATIVE COOLERS -NUMBER.....			
73	AIR CONDITIONING ZONE.....			A
74	SPACE NOW AIR CONDITIONED -SQ FEET.....			4,167
75	SPACE TO BE AIR CONDITIONED BY GSA -SQ FEET.....			
76	SPACE TO BE AIR CONDITIONED BY OTHERS -SQ FEET.....			
77	SPACE NOT TO BE AIR CONDITIONED -SQ FEET.....			3,480
78	SPACE TO BE RE-AIR CONDITIONED -SQ FEET.....			
79	AIR RAID SYSTEM.....			NO
80	WATCHMAN SYSTEM -STATUS.....			NOT REQUIRED
81	R&I FUNDING PERCENT.....			100
82	FIRST BLDG EXTENSION.....	(83)	SQ FT.....	
84	SECOND BLDG EXTENSION.....	(85)	SQ FT.....	
86	THIRD BLDG EXTENSION.....	(87)	SQ FT.....	
88	FOURTH BLDG EXTENSION.....	(89)	SQ FT.....	

OCT 14 1980

RCS-PB-72-125

DESCRIPTION REPORT

07 APR 71

REGION 04

BUILDING 230026

90 AREA CODE 2

DISTRICT 5
URBAN CENTER

08 BUILDING CLASS 400

09 OPERATING AGENCY P O D

10 INSPECTION CYCLE 4 YEARS

11 FLOOD CONTROL

BLOCK DESCRIPTION

53 KW POWER..... 665 WATTS PER NET SQ FT..... 38.62

54 SERVICE MAINS -NUMBER.....1

55 UNDERFLOOR DUCTS.....NO

56 TYPE SERVICE.....3 PHASE 4 WIRE 120/240 VOLT

57 EMERGENCY POWER.....NO

58 FIRE ALARM -STATUS.....NOT REQUIRED

59 FIRE SPRINKLER -STATUS.....NOT REQUIRED

60 FALLOUT SHELTER.....NO

61 ELEVATORS -NUMBER.....

62 ESCALATORS -NUMBER.....

63 DUMBWAITERS -NUMBER.....

64 SIDEWALK LIFTS -NUMBER.....

65 CAFETERIAS -NUMBER.....

66 TOTAL SEATING CAPACITY -NUMBER.....

67 TOTAL VENDING STANDS -NUMBER.....

68 VENDING STANDS BLIND OPERATED -NUMBER.....

69 CENTRAL AIR CONDITIONING.....YES

70 WINDOW AIR CONDITIONERS -TOTAL TONNAGE.....

71 PACKAGE AIR CONDITIONING -TOTAL TONNAGE.....

72 EVAPORATIVE COOLERS -NUMBER.....

73 AIR CONDITIONING ZONE.....A

74 SPACE NOW AIR CONDITIONED -SQ FEET..... 16,939

75 SPACE TO BE AIR CONDITIONED BY GSA -SQ FEET.....

76 SPACE TO BE AIR CONDITIONED BY OTHERS -SQ FEET.....

77 SPACE NOT TO BE AIR CONDITIONED -SQ FEET..... 5,010

78 SPACE TO BE RE-AIR CONDITIONED -SQ FEET.....

79 AIR RAID SYSTEM.....NO

80 WATCHMAN SYSTEM -STATUS.....NOT REQUIRED

81 R&I FUNDING PERCENT.....100

82 FIRST BLDG EXTENSION..... (83) SQ FT.....

84 SECOND BLDG EXTENSION..... (85) SQ FT.....

86 THIRD BLDG EXTENSION..... (87) SQ FT.....

88 FOURTH BLDG EXTENSION..... (89) SQ FT.....

OCT 1 1980

RCS-PB-72-125

91 DATE INSPECTED --- FEB 67

BUILDING D:

AS OF DA

03 U S POST OFFICE
04 W PINE AND FORREST STS
05 HATTIESBURG MISSISSIPPI

01 CITY CODE 1050
02 FACILITY CODE
06 CONGRESSIONAL
07 COUNTY CODE 3

BLOCK DESCRIPTION

12 LAND AREA -SQ FEET..... 29,03
13 LAND COST..... \$79,000
14 INITIAL ACQUISITION -YEAR..... 193
15 LAST ACQUISITION -YEAR.....
16 BUILDING ACQUIRED BY GSA -YEAR.....
17 BUILDING COMPLETED -YEAR..... 1934
18 FLOORS, MAXIMUM -NUMBER.....
19 BUILDING COST..... \$208,000
20 BUILDING REPLACEMENT COST..... \$568,000
21 RETENTION LIFE -YEARS..... 15

22 FAIR MARKET VALUE..... 5
23 GROSS BUILDING AREA -SQ FEET..... 24,710
24 CIRCULATION AREA -SQ FEET..... 3,223
25 MECHANICAL AREA -SQ FEET..... 1,507
26 NET AREA ASSIGNABLE BY GSA -SQ FEET.....
27 NET AREA ASSIGNABLE BY OTHER -SQ FEET..... 17,219
28 BUILDING -TYPE..... PERMANENT - PO-OFFICE BUILDING
29 STRUCTURE -TYPE..... WALL BEARING
30 FLOOR CONST. -TYPE..... STEEL BEAMS - RIBBED SLABS
31 FOUNDATION -TYPE..... SPREAD FOOTINGS

32 EXTERIOR SURFACE -TYPE..... STONE
33 EXTERIOR SURFACE INSTALLED -YEAR..... 1934
34 EXTERIOR SURFACE -PERCENT COVERED..... 90%
35 LIGHT COURTS OPEN -NUMBER.....
36 LIGHT COURTS CLOSED -NUMBER.....
37 SKYLIGHTS -NUMBER.....
38 EMERGENCY EGRESS -STATUS..... ADEQUATE
39 HIST PRESERVE -..... IS NOT POTENTIAL FOR NATIONAL REGISTER
40 LANDSCAPING -STATUS..... NOT REQUIRED
41 PARKING SPACES -NUMBER..... 5

42 BLDG OCCUPANTS PER PARKING SPACE -NUMBER..... 9
43 FLAGPOLES -NUMBER..... 1
44 ROOF AREA -SQ FEET..... 12,300
45 ROOF -TYPE..... COMPOSITION, BUILT-UP
46 BIRDPROOFING -STATUS..... NOT REQUIRED
47 TYPE OF FUEL.....
48 PLUMBING SYSTEM -STATUS..... ADEQUATE
49 RESTROOMS, MALE -NUMBER..... 5
50 RESTROOMS, FEMALE -NUMBER..... 2
51 WATERHEATER -TYPE..... GAS
52 INCINERATOR..... NO

U S POST OFFICE
W PINE AND FORREST STS
HATTIESBURG MISSISSIPPI

R & I WORK LOAD
AS OF DATE 21 MAY

* * * * *

WORK ITEM INVENTOR

W I PROJ CAT APPR AAS WORK ITEM TITLE----- CAP ESTIMATED COST

0007 000 213 141 74213 EXTERIOR PAINTING. NO \$1,800

BUILDING MANAGER

EXTERIOR LAST PAINTED DURING 1965. PREPARE AND PAINT ALL
PREVIOUSLY PAINTED EXTERIOR WOOD AND METAL SURFACES
INCLUDING THE FLAGPOLE. RECAULK THE WINDOWS.

W I PROJ CAT APPR AAS WORK ITEM TITLE----- CAP ESTIMATED COST

0008 000 213 141 74213 INTERIOR PAINTING. NO \$7,500

INT. PAINTING OR POINTING

INTERIOR LAST PAINTED DURING FY-65. PREPARE AND PAINT ALL
PREVIOUSLY PAINTED INTERIOR SURFACES. PAINT THE BASEMENT
MECHANICAL AND STORAGE AREAS.

W I PROJ CAT APPR AAS WORK ITEM TITLE----- CAP ESTIMATED COST

0039 000 310 141 74132 GENERAL REPAIRS. NO \$1,300

74000 NON CAPITALIZED

SAND AND REFINISH APPROXIMATELY 5200 SQFT OF WOOD FLOORS IN
WORKROOM.

W I PROJ CAT APPR AAS WORK ITEM TITLE----- CAP ESTIMATED COST

0053 000 310 141 74132 GENERAL REPAIR. NO \$100

74000 NON CAPITALIZED

REMOVE FOUR BROKEN PIECES OF GREEN CERAMIC TILE OF
WORKROOM WAINSCOT LOCATED NEAR MV DOORS AND REPLACE WITH NEW
PIECES OF TILE.

W I PROJ CAT APPR AAS WORK ITEM TITLE----- CAP ESTIMATED COST

0050 000 330 141 74132 NEW GROUND FLAGPOLE. NO \$2,000

74000 NON CAPITALIZED

D-C APPROVAL OF THIS ITEM IS REQUESTED. REMOVE ROOF
FLAGPOLE AND INSTALL NEW GROUND POLE. TREE REMOVAL IS
REQUESTED HOWEVER OVERHANG OF BRANCHES, LEAVES COLLECTING IN
AREAS AND HAZARD OF EMPLOYEES GOING TO THE ROOF MUST BE
CONSIDERED AND IS BASIS OF RECOMMENDATION.

OCT 4 1980

U S POST OFFICE
W PINE AND FORREST STS
HATTIESBURG MISSISSIPPI

R & I WORK LOAD
AS OF DATE 21 MAY

* * * * *

WORK ITEM INVENTO

W I PROJ CAT APPR AAS WORK ITEM TITLE----- CAP ESTIMATED COS

0046 000 410 141 74132 UPGRADE LIGHTING. NO
74000 NON CAPITALIZED

REPLACE EXISTING WAREHOUSE TYPE LIGHTING WITH NEW LIGHTING IN
ACCORDANCE TO POD GSA CRITERIA. REQUIRES POD FUNDS
AND AUTHORIZATION.

W I PROJ CAT APPR AAS WORK ITEM TITLE----- CAP ESTIMATED COS

0047 000 410 141 74132 NEW ELECTRICAL WIRING. NO \$2,000
74000 NON CAPITALIZED

INSTALL NEW WIRING PANELS AND SWITCHES IN ELECTRICAL
WORK DESCRIBED BY WORK ITEM 0040, 41, 46, 48, 49, 52 AND
OTHER AREAS IN BUILDING NOT PREVIOUSLY UP-DATED.

W I PROJ CAT APPR AAS WORK ITEM TITLE----- CAP ESTIMATED COS

0048 000 410 141 74132 LIGHTING FIXTURES. NO \$300
74000 NON CAPITALIZED

REPLACE OBSOLETE LIGHTING FIXTURE IN POSTMASTERS TOILET,
CLOSET 111, AND TOILET ADJACENT TO WORKROOM. REFER TO MARKED
A-P. INSTALL NEW EXHAUST FAN IN PUBLIC WOMENS TOILET

W I PROJ CAT APPR AAS WORK ITEM TITLE----- CAP ESTIMATED COS

0052 000 410 456 74132 UPGRADE LIGHTING. NO \$1,800
REIMB #

REMOVE EXISTING OBSOLETE INADEQUATE LIGHTING FIXTURES
IN BASEMENT SWINGROOM IN ACCORDANCE WITH GSA-POD CRITERIA.

OCT 14 1980

U S POST OFFICE
W PINE AND FORREST STS
HATTIESBURG MISSISSIPPI

R & I WORK LOAD
AS OF DATE 21 MAY

* * * * *

WORK ITEM INVENTOR

W I PROJ CAT APPR AAS WORK ITEM TITLE----- CAP ESTIMATED COST

0001 000 440 456 74132 MODERNIZE SCREENLINE. NO \$6,900
REIMB #

REMOVE SERVICE WINDOWS AT BAY A FINANCE SECTION AND INSTALL
1307C, 2 - 1334D AND 1326D LOCKBOX NESTINGS. REMOVE THE
WIRE MESH PARTITION AT FINANCE SECTION AS INDICATED ON
DRAWING NO. 27-32890-7. REMOVE SERVICE WINDOWS ON BAY G
AND MAIL DROP UNIT IN BAY H. INSTALL NEW MAIL DROP UNIT GSA
28-9-58B AND SERVICE COUNTER WITH ROLL UP METAL CURTAIN IN
BAY G. INSTALL NEW SERVICE COUNTER WITHROLL UP CURTAIN IN
BAY H AS INDICATED ON DRAWING 27-32890-7.

W I PROJ CAT APPR AAS WORK ITEM TITLE----- CAP ESTIMATED COST

0040 000 440 456 74132 MODERNIZATION. NO \$3,000
REIMB #

MODERNIZE POSTMASTERS OFFICE, ASSISTANT POSTMASTER,
SUPER-INTENDENT OF MAIL, INSPECTORS OFFICE WITH DROPPED
ACOUSTICALCEILING WITH RECESSED LIGHTING.

W I PROJ CAT APPR AAS WORK ITEM TITLE----- CAP ESTIMATED COST

0041 000 440 141 74132 MODERNIZATION. NO \$2,800
74000 NON CAPITALIZED

MODERNIZE ROOMS 134 AND 8. INSTALL DROPPED
ACOUSTICALCEILING AND PROVIDE RECESSED FLUORESCENT LIGHTING.
FOOTCANDLES IN ROOM 8 VARY 13 CP TO 48 CP. THIS IS A
TESTINGAREA. UPGRADE IN ACCORDANCE WITH GSA CRITERIA.

W I PROJ CAT APPR AAS WORK ITEM TITLE----- CAP ESTIMATED COST

0049 000 440 456 74132 PLATFORM MODERNIZATION. NO \$20,900
REIMB #

COMPLETELY REMOVE TEMPORARY MAIL PLATFORM AND
ENLARGEEXISTING PERMANENT MAIL PLATFORM TO REPLACE THE
PLATFORMREMOVED. INCLUDE NEW PERMANENT RAMP, UP-LIGHT
LIGHTINGOF PERMANENT PLATFORM. THE MARQUEE IS CONSTANTLY
DAMAGED. CONSIDERATION MUST BE GIVEN EITHER TO RAISING ROOF
ORINSTALLING SPECIAL OVERHEAD BUMPER.



United States Post Office
Hattiesburg, Mississippi

Exterior, main facade

OCT 14 1980



United States Post Office
Hattiesburg, Mississippi

Exterior, lamp standard and
decorative grillwork.

OCT 14 1980



United States Post Office
Hattiesburg, Mississippi

Interior, view of lobby.

OCT 14 1980