

1404

United States Department of the Interior National Park Service

3

National Register of Historic Places Registration Form

This form is for use in nominating or requesting determinations of eligibility for individual properties or districts. See instructions in Guidelines for Completing National Register Forms (National Register Bulletin 16). Complete each item by marking "x" in the appropriate box or by entering the requested information. If an item does not apply to the property being documented, enter "N/A" for "not applicable." For functions, styles, materials, and areas of significance, enter only the categories and subcategories listed in the instructions. For additional space use continuation sheets (Form 10-900a). Type all entries.

1. Name of Property

historic name Beulah Cemetery
other names/site number n/a

2. Location

street & number Openwood Street at Old Jackson Road
city, town Vicksburg
state Mississippi code MS county Warren code 149 zip code 39180

3. Classification

Table with 3 columns: Ownership of Property, Category of Property, and Number of Resources within Property. Includes checkboxes for private/public ownership and building/site/structure/object categories.

Name of related multiple property listing: Historic Resources of Vicksburg, Mississippi
Number of contributing resources previously listed in the National Register 0

4. State/Federal Agency Certification

As the designated authority under the National Historic Preservation Act of 1966, as amended, I hereby certify that this nomination request for determination of eligibility meets the documentation standards for registering properties in the National Register of Historic Places and meets the procedural and professional requirements set forth in 36 CFR Part 60. In my opinion, the property meets does not meet the National Register criteria. See continuation sheet.
Signature of certifying official: Kenneth H. P. Pool
Date: September 18, 1992
Deputy State Historic Preservation Officer

In my opinion, the property meets does not meet the National Register criteria. See continuation sheet.
Signature of commenting or other official
Date
State or Federal agency and bureau

5. National Park Service Certification

I, hereby, certify that this property is:
[X] entered in the National Register.
[ ] See continuation sheet.
[ ] determined eligible for the National Register. [ ] See continuation sheet.
[ ] determined not eligible for the National Register.
[ ] removed from the National Register.
[ ] other, (explain:)
for Signature of the Keeper Date of Action

**6. Function or Use**

Historic Functions (enter categories from instructions)

Funerary: Cemetery

Current Functions (enter categories from instructions)

Funerary: Cemetery

**7. Description**

Architectural Classification  
(enter categories from instructions)

n/a

Materials (enter categories from instructions)

foundation n/a

walls n/a

roof n/a

other gravemarkers: stone

Describe present and historic physical appearance.

Beulah Cemetery is a fifty-two (52) acre lightly rolling tract located on Old Jackson Road, abutting the Vicksburg National Military Park in Vicksburg, Mississippi. There are more than 5,500 graves scattered across the grassy tree-studded cemetery. The majority of the graves date from 1884 to the 1940s, however, the cemetery is still used as a place of interment. Family plots are in some instances delineated by masonry copings, wrought iron fences and corner posts linked with chains. The graves are oriented in an east-west direction, facing to the east. The majority of the grave markers are relatively simple vertical headstones with and without bases. Scattered among them are obelisks, box crypts, slab crypts, and crudely made hand-carved stones.

The graveyard did not develop in an "orderly" fashion with particular areas being developed first. On the contrary, the entire cemetery has been used throughout the years. The back of the cemetery was known as "pauper's field" because it was reserved for those people who could not afford a burial. It does not appear that the cemetery was formally landscaped. A low chainlink fence was added in the 1950s to enclose the property and a metal arch was added at the main entrance also about this time.

## 8. Statement of Significance

Certifying official has considered the significance of this property in relation to other properties:

nationally  statewide  locally

Applicable National Register Criteria  A  B  C  D

Criteria Considerations (Exceptions)  A  B  C  D  E  F  G

Areas of Significance (enter categories from instructions)

Ethnic Heritage/Black

Period of Significance

1884-1942

Significant Dates

n/a

Cultural Affiliation

n/a

Significant Person

n/a

Architect/Builder

n/a

State significance of property, and justify criteria, criteria considerations, and areas and periods of significance noted above.

Beulah Cemetery is significant as one of the most intact historic properties associated with the growth and development of the African-American community of Vicksburg, Mississippi, and is, therefore, eligible for listing under Criteria A for ethnic heritage. From its establishment in 1884 until the 1940s, the cemetery was the most important cemetery for African-Americans in the Vicksburg area and remains today as an intact and visible landmark for the Black community.

Beulah provides information, through its gravestones, about the history of African-Americans in Vicksburg. The African-American community has constituted a significant proportion of the City's population from its founding in 1812, making up nearly one-half of the population. Despite this long history, there are few early historic African-American resources that survive, or that retain sufficient integrity to be considered eligible for listing on the National Register of Historic Places. Many of these resources have been lost through demolition or have been so severely neglected that they have suffered major losses of integrity. The rarity of properties associated with the African-American community, therefore, increases the relative significance of Beulah cemetery.

Vicksburg's only cemetery for African-Americans, Beulah was established by the Vicksburg Tabernacle No. 19 Independent Order of Brothers and Sisters of Love and Charity, a fraternal order that had wide support among Blacks, in 1884. Fifty-two (52) acres along old Jackson Road were purchased by Tabernacle No. 19 for \$1000 from Harvey and Lucy Shannon. Prior to the development of this cemetery, Blacks were buried in church cemeteries or in private yards.

Named for the proverbial Beulah Land of Biblical origin, the cemetery is the final resting place for members of the most prominent Black families in Vicksburg's history. Included are ancestors of almost every native Black in Vicksburg. The cemetery documents the existence of generations of people for whom otherwise there might be no surviving material memorial. Among those prominent people buried at Beulah are the founders of the Black funeral homes, the Jeffersons and the Dillons; Rosa A. Temple, a Black educator and person for whom Rosa A. Temple High School (in Vicksburg) was named; G. M. McIntyre, principal of Cherry Street School (a Black high school) for whom a school was also named; Robert Banks Marshall, the city's first Black postal employee; and William Tillmon Jones, Grand Chancellor of the Knights of Pythias (1889-1906).

Beulah Cemetery has been continuously used since its founding in 1884, with the numbers of burials falling off beginning about 1945 because of the increased popularity, accessibility and availability of Cedar Hill (City) Cemetery. Its period of significance, therefore, for National Register purposes arbitrarily closes at 1942, this date being fifty  See continuation sheet years previous to the date of this nomination.

**9. Major Bibliographical References**

Deed Records. Office of the Chancery Clerk, Warren County Courthouse.  
Dillon Funeral Home. Burial Records.  
Fisher-Riles Funeral Home. Burial Records.  
Jefferson Funeral Home. Burial Records.  
Robbins Funeral Home. Burial Records.

See continuation sheet

Previous documentation on file (NPS):

- preliminary determination of individual listing (36 CFR 67) has been requested
- previously listed in the National Register
- previously determined eligible by the National Register
- designated a National Historic Landmark
- recorded by Historic American Buildings Survey # \_\_\_\_\_
- recorded by Historic American Engineering Record # \_\_\_\_\_

Primary location of additional data:

- State historic preservation office
- Other State agency
- Federal agency
- Local government
- University
- Other

Specify repository:

Vicksburg Foundation for Historic Preservation

**10. Geographical Data**

Acreage of property 52 acres

UTM References

|   |      |         |    |          |    |   |    |    |   |    |   |
|---|------|---------|----|----------|----|---|----|----|---|----|---|
| A | 15   | 70      | 12 | 19       | 10 | 3 | 15 | 82 | 0 | 16 | 0 |
|   | Zone | Easting |    | Northing |    |   |    |    |   |    |   |
| C | 15   | 70      | 12 | 5        | 02 | 3 | 15 | 81 | 7 | 2  | 0 |

|   |      |         |    |          |    |    |   |    |    |  |  |
|---|------|---------|----|----------|----|----|---|----|----|--|--|
| B | 15   | 7       | 02 | 50       | 12 | 35 | 8 | 20 | 60 |  |  |
|   | Zone | Easting |    | Northing |    |    |   |    |    |  |  |
| D | 15   | 7       | 02 | 19       | 10 | 35 | 8 | 17 | 20 |  |  |

See continuation sheet

Verbal Boundary Description

Warren County Parcel Number: 0954-19-2720-010100-19-16-4.

See continuation sheet

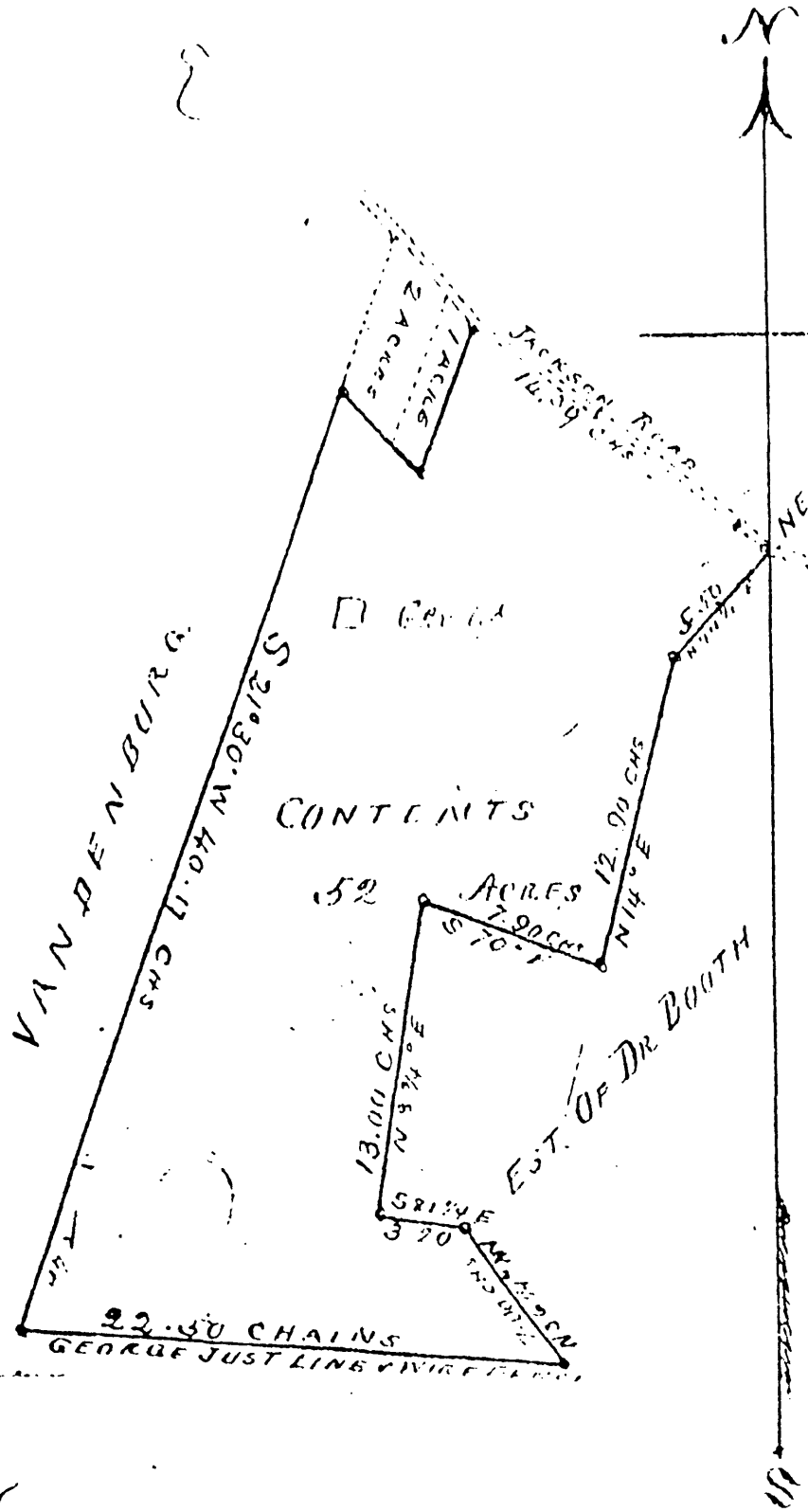
Boundary Justification

From its establishment, the cemetery has historically consisted of these fifty-two (52) acres.

See continuation sheet

**11. Form Prepared By**

name/title Nancy H. Bell, Executive Director  
 organization Vicksburg Foundation for Historic Pres. date 6/24/92  
 street & number P.O. Box 254 telephone (601) 636-5010  
 city or town Vicksburg state MS zip code 39181



BEULAH CEMETERY  
 VICKSBURG, WARREN  
 COUNTY, MS

Scale 10 chains = one inch  
 At each corner are placed  
 two iron stakes.



BEVLAH CEMETERY (WILLIAM TULLMON JONES MARKER)  
VICKSBURG, WARREN COUNTY, MISSISSIPPI  
SOUTHEAST CORNER OF THE CEMETERY  
VICKSBURG FOUNDATION FOR HISTORIC PRESERVATION  
20 AUGUST 1992  
1 OF 4





BEULAH CEMETERY  
VICKSBURG, WARREN COUNTY, MISSISSIPPI

VFHP

20 AUGUST 1992

2 OF 4

ANDREW  
FRANK  
MAY  
1850

WILLIAM  
MAY



BEULAH CEMETERY  
VICKSBURG, WARREN COUNTY, MISSISSIPPI  
VHP

20 AUGUST 1992

3 OF 4



BEULAH CEMETERY  
VICKSBURG, WARREN COUNTY, MISSISSIPPI

VHP

20 AUGUST 1992

40#4