

170

United States Department of the Interior
National Park Service

National Register of Historic Places
Registration Form

FEB 07 1989

NATIONAL
REGISTER

This form is for use in nominating or requesting determinations of eligibility for individual properties or districts. See instructions in *Guidelines for Completing National Register Forms* (National Register Bulletin 16). Complete each item by marking "x" in the appropriate box or by entering the requested information. If an item does not apply to the property being documented, enter "N/A" for "not applicable." For functions, styles, materials, and areas of significance, enter only the categories and subcategories listed in the instructions. For additional space use continuation sheets (Form 10-900a). Type all entries.

1. Name of Property

historic name Holmes-Brent House
other names/site number Brentwood (Preferred)

2. Location

street & number 601 Delaware Avenue N/A not for publication
city, town McComb N/A vicinity
state Mississippi code MS county Pike code 113 zip code 39648

3. Classification

Ownership of Property	Category of Property	Number of Resources within Property	
<input checked="" type="checkbox"/> private	<input checked="" type="checkbox"/> building(s)	Contributing	Noncontributing
<input type="checkbox"/> public-local	<input type="checkbox"/> district	<u>1</u>	<u> </u> buildings
<input type="checkbox"/> public-State	<input type="checkbox"/> site	<u> </u>	<u> </u> sites
<input type="checkbox"/> public-Federal	<input type="checkbox"/> structure	<u> </u>	<u> </u> structures
	<input type="checkbox"/> object	<u>1</u>	<u>0</u> Total

Name of related multiple property listing: N/A
Number of contributing resources previously listed in the National Register 0

4. State/Federal Agency Certification

As the designated authority under the National Historic Preservation Act of 1966, as amended, I hereby certify that this nomination request for determination of eligibility meets the documentation standards for registering properties in the National Register of Historic Places and meets the procedural and professional requirements set forth in 36 CFR Part 60. In my opinion, the property meets does not meet the National Register criteria. See continuation sheet.
Kenneth H. P. Peral February 2, 1989
Signature of certifying official Date
Deputy State Historic Preservation Officer, Mississippi
State or Federal agency and bureau

In my opinion, the property meets does not meet the National Register criteria. See continuation sheet.
Signature of commenting or other official Date
State or Federal agency and bureau

5. National Park Service Certification

I, hereby, certify that this property is:
 entered in the National Register. See continuation sheet.
 determined eligible for the National Register. See continuation sheet.
 determined not eligible for the National Register.
 removed from the National Register.
 other, (explain:)
Albion Byars 3/9/89
Signature of the Keeper Date of Action

6. Function or Use

Historic Functions (enter categories from instructions)

Domestic: Single Dwelling

Current Functions (enter categories from instructions)

Domestic: Single Dwelling

7. Description

Architectural Classification
(enter categories from instructions)Classical Revival

Materials (enter categories from instructions)

foundation Stuccowalls Brick

roof Ceramic Tileother ConcreteWood

Describe present and historic physical appearance.

The Holmes-Brent House, also known as Brentwood, is located on the southwest corner of Delaware Avenue and Sixth Street, just three blocks from downtown McComb. Situated on 24,300 square feet of land, the house is surrounded by pecan, elm, crepe myrtle, oak and magnolia trees.

The two-and-one-half story, brick, 5x5 bay, Neoclassical Revival mansion rests on a high foundation that is stuccoed and scored to resemble stone, and is crowned by a hip roof clad in ceramic tile and trimmed with a dentilled and modillioned frieze and molded cornice. A one-story wing is to the rear, and five interior panelled brick chimneys pierce the roofs of the main house and wing. The main (north) facade is dominated by a two-story pedimented portico featuring colossal fluted Ionic columns and pilasters resting on scored stucco parapets and supporting a full entablature composed of an architrave with multiple fascias, a modillioned and dentilled frieze, and a molded cornice (Photos 3 & 4). The tympanum is highlighted by a lunette accented by tracery and trimmed with a molded surround and keystone, and the upper gallery is enclosed by a balustrade having turned balusters and molded rails.

The central bay of each level of the facade contains a recessed door detailed with molded back bands, fine millwork and bevelled leaded glass (Photo 5). The doorway on the first level is framed by panelled millwork and leaded glass sidelights and transom with corner lights. The frontispiece on each level consists of fluted Ionic colonettes and pilasters supporting a full dentilled entablature. Window openings on the facade are 12/1 double-hung sash crowned by a flat stone jack arch with keystone. A cast stone belt course directly beneath the second-story windows encircles the house.

The east (side) elevation is highlighted by a one-story, 3-bay, semi-circular portico which features fluted Ionic columns, fluted pilasters, and a flat roof that has jigsawn purlins and is crowned by a balustrade featuring turned balusters, molded rails, and plain newels with molded caps (Photos 6 & 7). The central bay on each level of this elevation contains a recessed bevelled leaded glass door framed by leaded glass sidelights and transom and surrounded by a frontispiece like the entrances on the main facade. Just south of the central entry on the first level is a pair of French doors topped by a three-light transom, and other openings on this elevation are

United States Department of the Interior
National Park Service

National Register of Historic Places Continuation Sheet

Holmes-Brent House (Brentwood), McComb, Pike County, Mississippi

Section number 7 Page 1

12/1 double-hung sash windows, all crowned by flat stone jack arches with keystones. A gabled dormer with a Palladian-influenced window pierces the roof of this elevation.

The 4,050 sq. ft. interior features fine millwork, decorative plasterwork, oak floors, pocket doors, bevelled leaded glass doors and fluted pilasters. The ceilings and cornices are of decorative plasterwork, and the brass chandeliers with frosted domes are surrounded by plaster medallions.

The 41' long and 12' wide, central, T-shaped hallway is accented by an open, 2-flight stairway having a mahogany balustrade featuring turned balusters and a massive panelled newel post (Photo 9). Drop pendants grace the stairway, and at the landing is a tripartite stained glass window featuring reds, greens, brown and gold in a floral design. To the east of the central hall, on the lower level, is the music room, hall and bedroom; to the west is the living room, dining room and breakfast room; and to the south (rear) is a hall, kitchen, sitting room, bathroom and sunporch. The second level has four bedrooms and a bathroom. In the living room is an ornate carved walnut mantelpiece with tilework and a mirrored overmantel (Photo 8). The music room is dominated by a fireplace with a tiled face, bracketed shelf and an overmantel detailed with a landscaped mural of inlaid wood.

The back stairway and attic may be entered from the second floor landing. The enclosed back stairway leads to the first floor sitting room, and stairs on the west side of the landing, concealed by a large wooden door, lead to a full unfloored attic constructed of heart pine. The second floor hall is flanked on the west side by a pilaster and colonette supporting a double archway that is a mock entrance to the southwest bedroom and bathroom, which has its original fixtures, including a fluted pedestal washstand and footed tub. The walls of the bathroom are sheathed in 8" marble blocks, and the floor is ceramic tile.

The grounds originally included a brick servants' quarters and a pergola, but both structures were demolished in the 1970s.

8. Statement of Significance

Certifying official has considered the significance of this property in relation to other properties:

nationally statewide locally

Applicable National Register Criteria A B C D

Criteria Considerations (Exceptions) A B C D E F G

Areas of Significance (enter categories from instructions)
Architecture

Period of Significance
1912

Significant Dates
1912

Cultural Affiliation

N/A

Significant Person
N/A

Architect/Builder
Unknown

State significance of property, and justify criteria, criteria considerations, and areas and periods of significance noted above.

Brentwood derives its significance from its architectural character (Criterion C), being the best remaining example of the Neoclassical Revival style in McComb. The Neoclassical Revival was widely adopted throughout Mississippi in the first two decades of this century for prestigious residences. The symmetrical main facade dominated by the full-height, pedimented portico with fluted Ionic columns; the elaborate frontispieces surrounding bevelled leaded glass doors, transoms and sidelights; the semi-circular side portico; and the ceramic tiled hip roof trimmed with a dentilled and modillioned frieze and molded cornice of Brentwood combine to create an excellent example of domestic Neoclassical Revival architecture. In addition, the interior has such significant features as fluted pilasters; eight fireplaces with ornate mantelpieces; an open, two-flight stairway having a mahogany balustrade and drop pendants; a tripartite stained glass window; fine millwork; plaster cornices and ceiling medallions; brass chandeliers; and oak floors.

Hilborn B. ("Hib") Holmes and his wife, Evie Elizabeth Mixon Holmes, built this Neoclassical Revival house in 1912. They selected the finest materials to construct the home, purchasing lumber from J. J. White Lumber Company in McComb and the bevelled leaded glass doors from New Orleans (Mrs. Thomas Ogletree, niece of Hib Holmes, interviewed by Elizabeth Dunnaway, owner, at McComb, MS, July 16, 1988). Hib Holmes and his brother, William F. Holmes, were partners in a mercantile and grocery business called The Holmes Brothers.

In 1940, Mrs. Holmes sold her home to Julius Hubert Brent and his wife, Elizabeth Kennedy Brent. Mr. Brent was a merchant and real estate operator, probably "responsible for the erection of as many new buildings in McComb as any other single figure" ("Widely Known Pike Leader Passes Away," The Summit [Mississippi] Sun, October 28, 1948, p. 1). He was very active in the community and also served two terms in the Mississippi State Legislature (Mississippi Blue Book 1941-43. [Jackson, MS, 1943], p. 26).

See continuation sheet

9. Major Bibliographical References

"Beloved Lady, Mrs. Holmes, Laid to Rest." McComb (Miss.) Enterprise Journal, March 2, 1950.
Cain, Mary. "Widely Known Leader Passes Away." Summit (Miss.) Sun, October 28, 1948.
Dunnaway, Elizabeth. "Dunnaway Presents Print of Brentwood." McComb (Miss.) Enterprise Journal, October 19, 1985.
McLemore, Richard Aubrey and McLemore, Nannie Pitts. Mississippi Through Four Centuries. Chicago: Laidlaw Brothers, 1949.
Pike County, MS. Chancery Clerk. Deed Book 290, p 75.
Wood, Walker. Mississippi Blue Book 1941-1943. Jackson: 1943.

See continuation sheet

Previous documentation on file (NPS):

- preliminary determination of individual listing (36 CFR 67) has been requested
- previously listed in the National Register
- previously determined eligible by the National Register
- designated a National Historic Landmark
- recorded by Historic American Buildings Survey # _____
- recorded by Historic American Engineering Record # _____

Primary location of additional data:

- State historic preservation office
- Other State agency
- Federal agency
- Local government
- University
- Other

Specify repository: _____

10. Geographical Data

Acreeage of property less than one acre

UTM References

A 15 742090 3459390
Zone Easting Northing
C _____

B _____
Zone Easting Northing
D _____

See continuation sheet

Verbal Boundary Description

Lots 1 and 2, less 15 feet off the west side of lot 2, all in square 18, McComb City, Pike County, Mississippi. Referred to as Section 18, Township 3, Range 7.

See continuation sheet

Boundary Justification

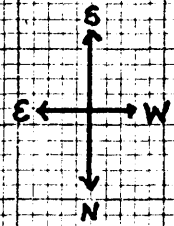
The boundary includes the two city lots historically associated with the property.

See continuation sheet

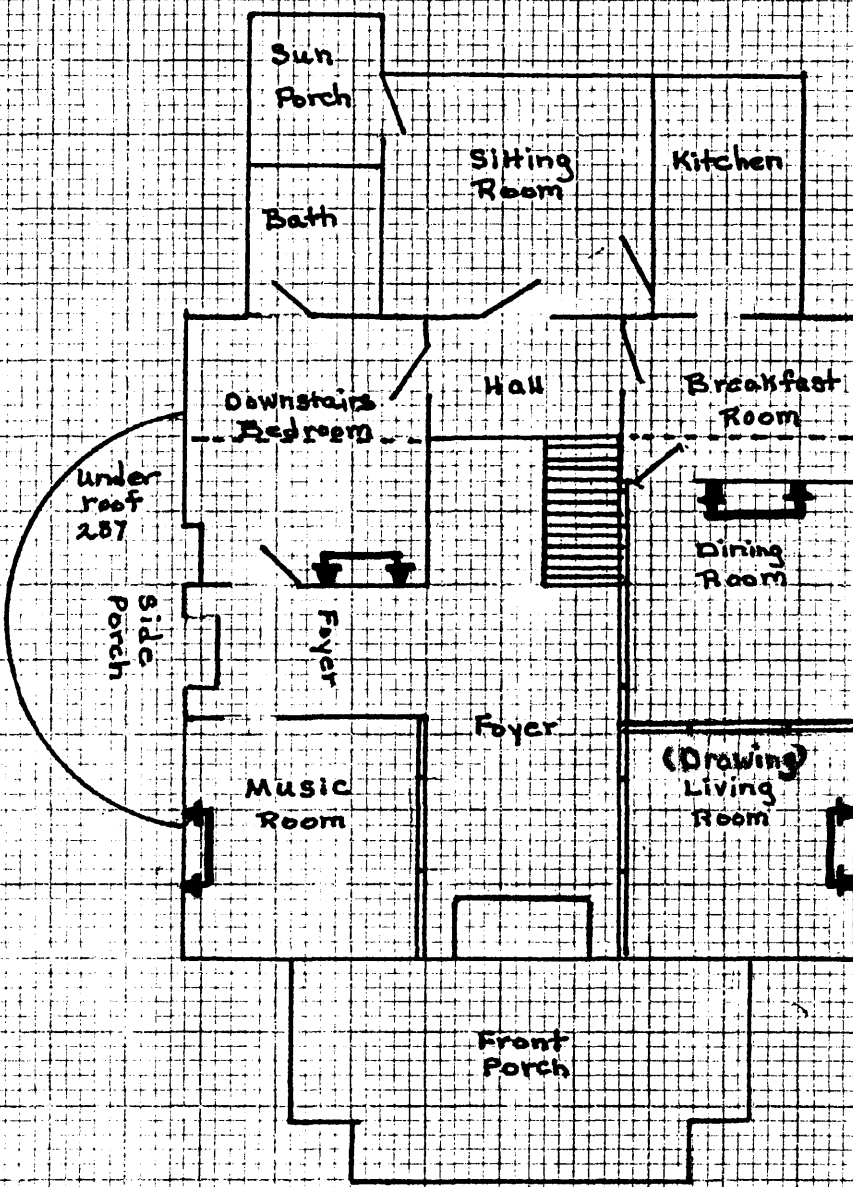
11. Form Prepared By

name/title Mrs. Elizabeth (Phil) Walker Dunnaway - Owner
organization _____ date December 15, 1988
street & number 14012 Puerto Drive telephone (601) 875-0861
city or town Ocean Springs state Mississippi zip code 39564

Holmes-Cross House
(Brentwood) - McComb, Miss. First Floor

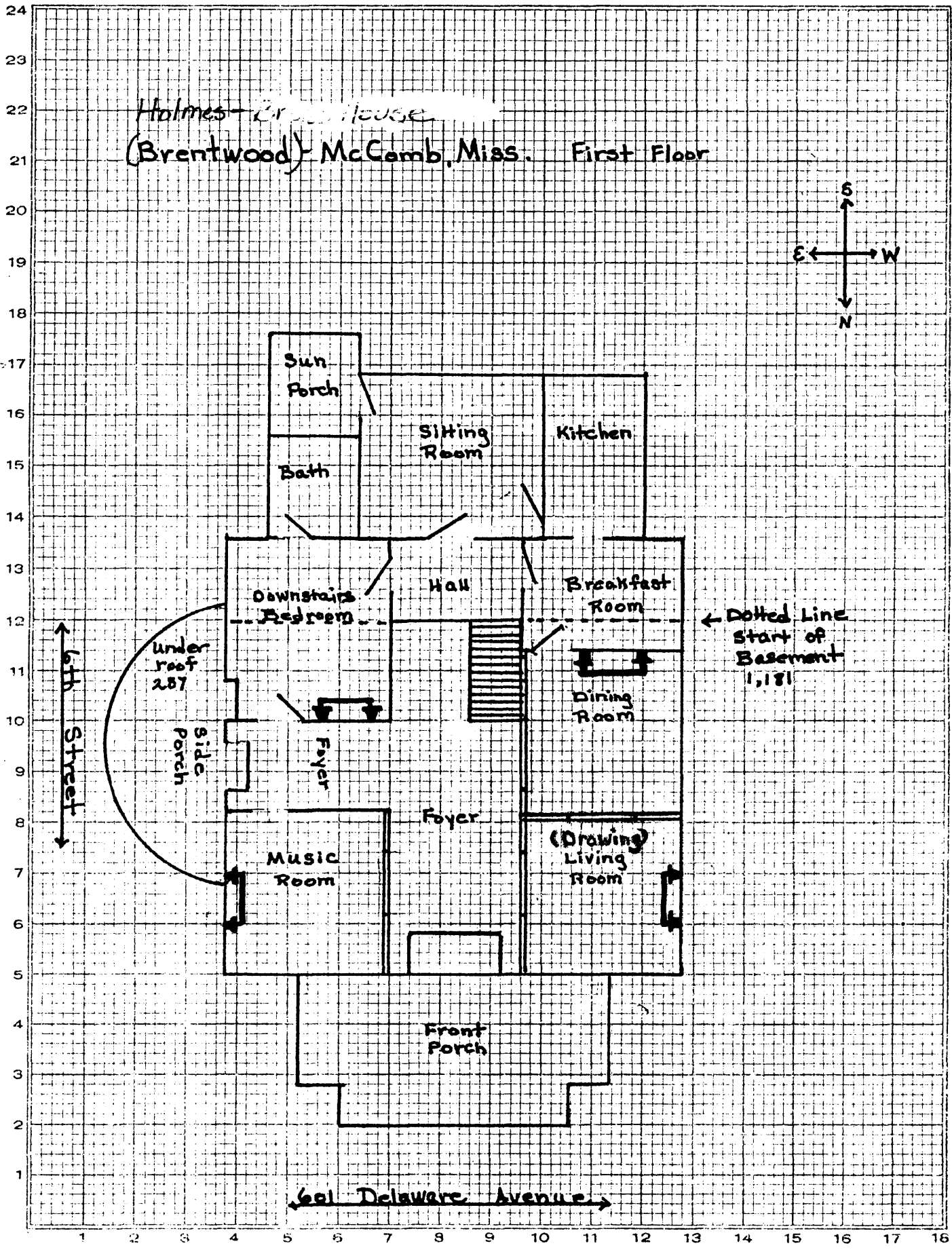


6th Street

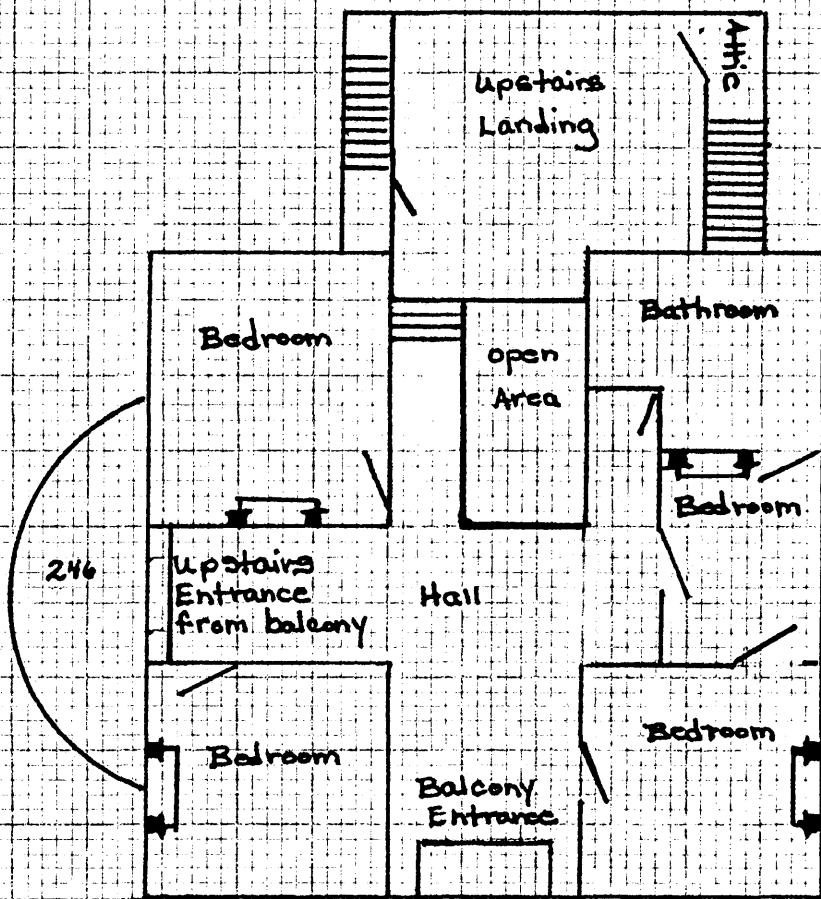
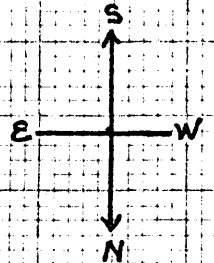


Dotted Line
Start of
Basement
1,181

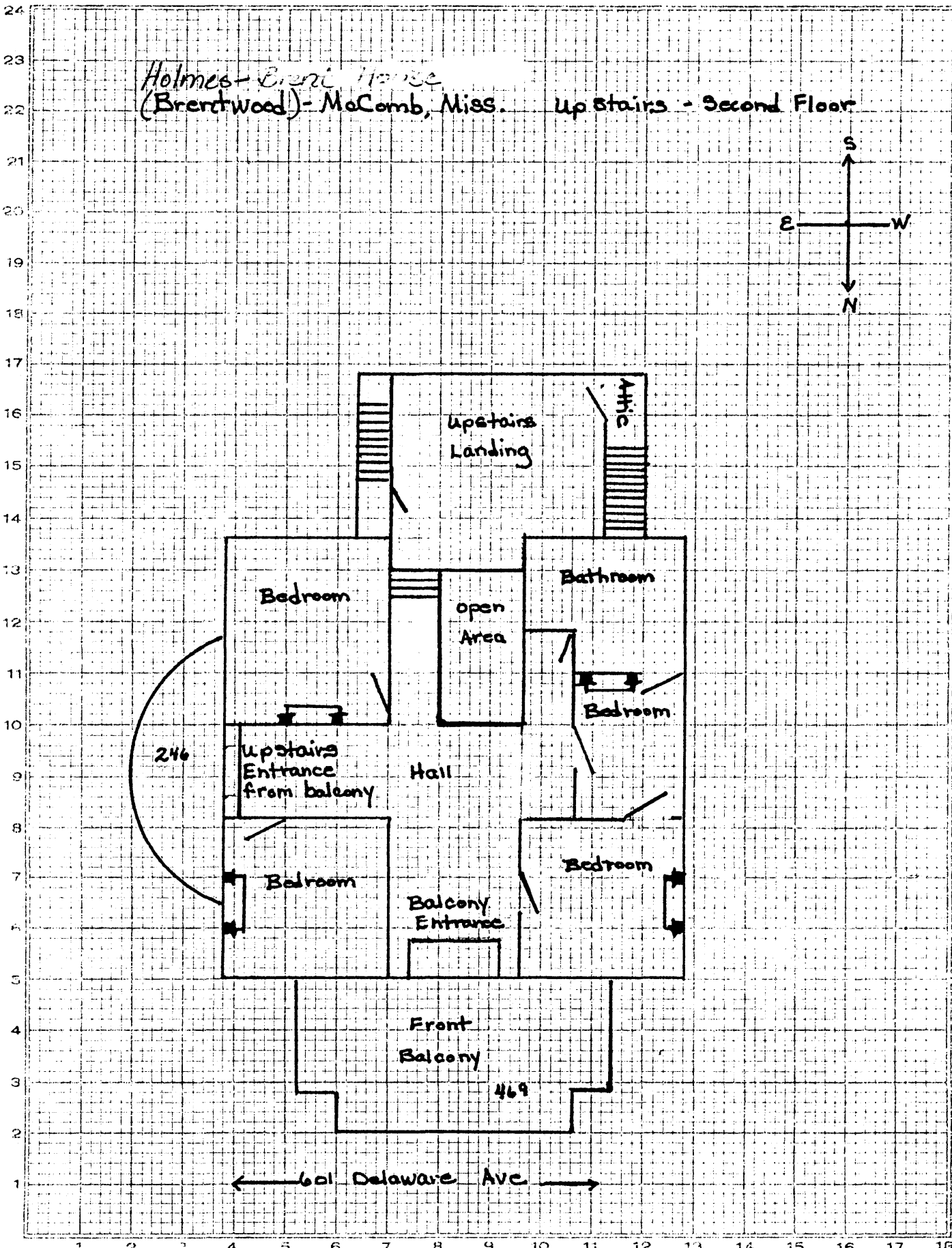
601 Delaware Avenue



Holmes - Eerie House
(Brentwood) - McComb, Miss. Up stairs - Second Floor



← 601 Delaware Ave →





~~Holmes, Hilborn B., House~~ Holmes-Brent House
(Brentwood)

McComb, Pike, Mississippi

Elizabeth Dunaway

April, 1988

Mississippi Department of Archives and History

View of front (north) View to South

Photo 1 of 10



~~Holmes, Hilborn B., House~~ Holmes-Brent House
(Brentwood)

McComb, Pike, Mississippi

Elizabeth Dunnaway

April, 1988

Mississippi Department of Archives and History

Photo of front (north) and (east) elevations - View to West

Photo 2 of 10



~~Holmes, Hilborn B., House~~ Holmes-Brent House
(Brentwood)

McComb, Pike, Mississippi

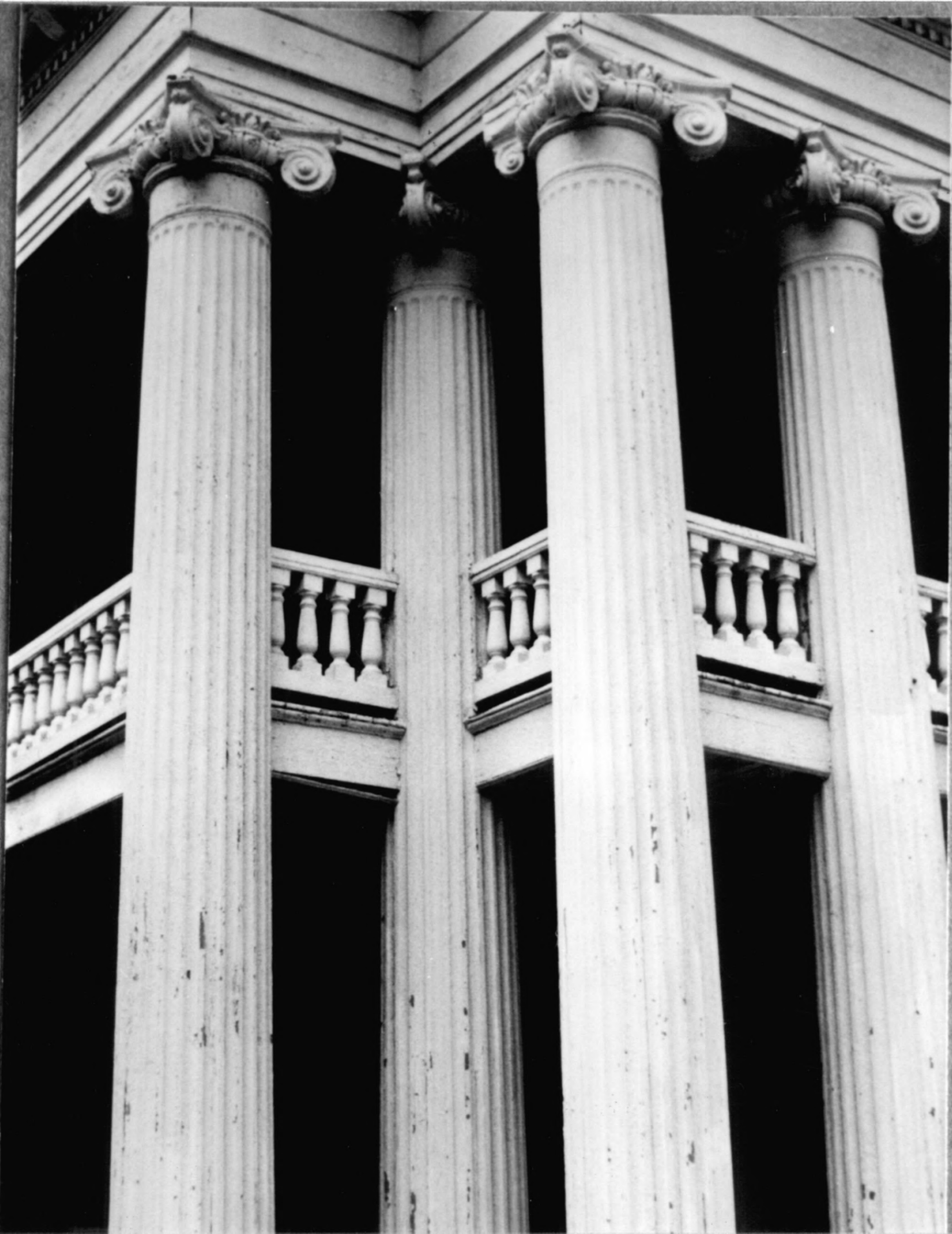
Elizabeth Dunaway

April, 1988

Mississippi Department of Archives and History

North elevation. View to South

Photo 3 of 10



~~Holmes, Hilborn B., House~~ Holmes - Brent House
(Brentwood)

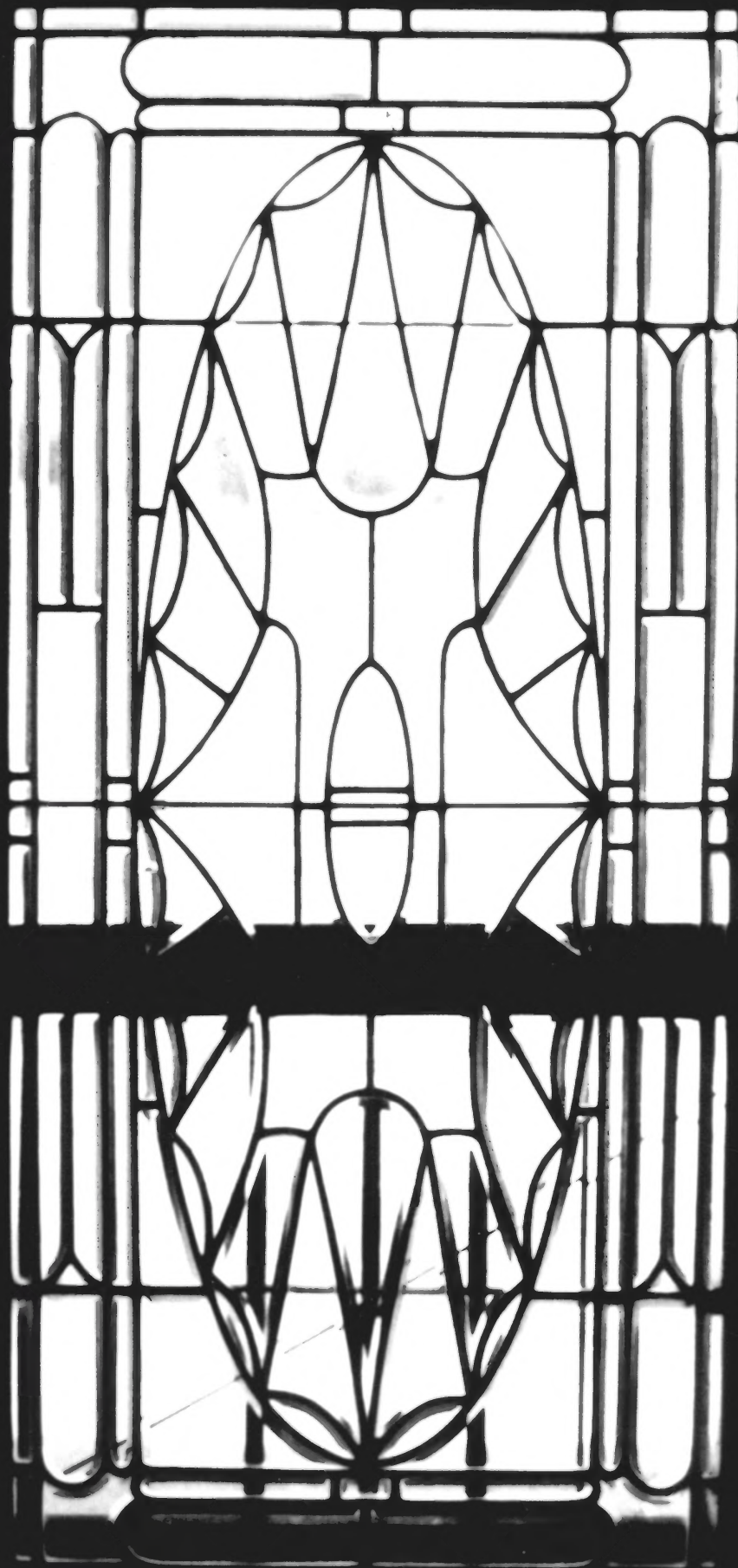
McComb, Pike, Mississippi

Elizabeth Dunaway

April, 1988

Mississippi Department of Archives and History
Ionic Columns on North Side, view to West

Photo 4 of 10



~~Holmes, Hilborn B., House~~ Holmes - Brent House
(Brentwood)

McComb Pike, Mississippi

Elizabeth Durnaway

April, 1988

Mississippi Department of Archives and History

Main entrance on north side View facing north

Photo 5 of 10



~~Holmes, Hilborn B. House~~ Holmes-Brent House
(Brentwood)

McComb, Pike, Mississippi

Elizabeth Dumma-way

April, 1988

Mississippi Department of Archives and History

East elevation, view facing west

Photo 6 of 10



~~Holmes, Hilborn B., House~~ Holmes-Brent House
(Brentwood)

McComb, Pike, Mississippi

Elizabeth Dunaway

April, 1988

Mississippi Department of Archives and History

East and part of north elevation, View to West

Photo 7 of 10



~~Holmes, Hilborn B., House Holmes-Brent House~~
(Brentwood)

McComb, Pike, Mississippi

Elizabeth Durnaway

April, 1988

Mississippi Department of Archives and History
Drawing Room mantelpiece, view to west

Photo 8 of 10



~~Holmes, Hilborn B., House~~ Holmes-Brent House
(Brentwood)

McComb Pike, Mississippi

Elizabeth Dunnaway

April, 1988

Mississippi Department of Archives and History

Main Stairway as seen from north entrance,
view to south

Photo 9 of 10



~~Holmes, Hilborn B., House~~ Holmes-Brent House
(Brentwood)

McComb, Pike, Mississippi

Elizabeth Tunneway

April, 1988

Mississippi Department of Archives and History
Back elevation (south), View to north

Photo 10 of 10