



Historic Sites Survey

ARCHITECTURAL DESCRIPTION: The original 1910 school is a square, 2 story building with 4/4 double hung sash windows that have segmental brick arches and rick slipsills. A major addition was undertaken in 1922 and now the 1910 school forms part of the rear facade of this 1920's section. The 1922 section of this school is a 2 story, 15 bay wide, brick building with a truncated hip roof. In the front, central bay of this building, concrete steps lead up to double doors capped by a transom. This entrance is flanked by brick piers with concrete cartouches above them. Brick diapering spans the area above the entrance and between the piers. The other front facade bays on the 1st and 2nd stories contain 12/12 double hung sash windows alternating with slender, brick pilaster strips topped by unusual, concrete capitals. All the windows feature brick soldier arches. Those on the 1st floor have a continuous concrete sill, while the 2nd story windows have brick slipsills. Brick diapering accents the north and south facades.

On the north facade of the 1922 addition is a 1 story, covered walkway (constructed 1936) leading to the 1936 PWA annex, which features several Art Deco ALTERATIONS.

Just south of the 1922 section of the school is a c. 1960 annex which (over) is connected to the main building by a covered walkway (constructed c. 1960). This addition does not fall within the boundary.

OUTBUILDINGS:

Two late 20th century school buildings are located behind the original school.

LANDSCAPE FEATURES:

The school is on Montgomery Street, which is only one block long. It lies near the center of Madison.

STATEMENT OF SIGNIFICANCE: The 1922 section of the Madison-Ridgeland Public School is architecturally significant as the earliest known example of the use of the Jacobethan Revival Style for school architecture in Mississippi. Jacobethan Revival, which flourished and died in the 1920s in Mississippi, was the most popular style of that era for educational buildings. Other examples from the same decade are Central High School (1925) in Jackson, the Old Middle School Building (1927) in Starkville (both of which are already listed in the National Register) and the Old Natchez High School (1929). Although not nearly as high style as these latter 3 buildings, the Madison-Ridgeland Public School, with such medieval detailing as diapering, is of a straightforward and simple Jacobethan design. It is indicative of a rural community's aspirations to employ the period's most fashionable design for educational structures, albeit timidly.

The PWA annex of 1936 is a rare example of the Art Deco style in Mississippi, particularly as it was applied to schools.

NAME: Madison-Ridgeland Public School (2 bldgs.)

STREET NO: Montgomery Street

TOWN/VIC: Madison

COUNTY: Madison

BLOCK/LOT: N/A

PRESENT OWNER: Ridgeland Municipal Separate School

ADDRESS Dist., P.O. Box 39, Madison, MS 39110

PRESENT USE: Vacant

FORMER USE: School

DATE: 1910, 1922, 1936

STYLE: Jacobethan Revival/Art Deco

ARCH/BUILDER: unknown

SOURCE OF DATE: Newspaper 9/18/49 in Subject File: Madison Station 1901-1977.

ENVIRONMENT: Commercial/residential

LEVEL OF SIGNIFICANCE

- NEIGHBORHOOD
- LOCAL x
- STATE
- NATIONAL

PHOTOS

NEG. # Roll 1556-16A, 17A, Roll 1611-40A, 41A, 42A Roll 1676-42A to 44A; 1A to 18A

SEE ATTACHED PLAN WITH NORTH ARROW AND SHAPE OF STRUCTURE:

SEE THE ATTACHED MAP

CONTINUATION: architectural elements. The verticality of this 2 story, buff brick structure is emphasized on the north facade by panelled, brick piers, which alternate with metal sash windows. The east and west facades feature circular windows and tall, narrow, metal sash windows with brick slipsills and brick hood molds with mousetooth detailing. The covered walkway spans almost the entire length of the annex's west facade. The entrance vestibule into the walkway is accented by a parapet of decorative brickwork and a slightly recessed entrance with a concrete canopy. The canopy displays hard-edged low relief letters spelling "Madison-Ridgeland High School," a stylized figure sculpture of griffins on the corner and battle ment-like coping. The entrance vestibule on the southeast facade is marked by decorative brickwork, a circular window and a simple canopy. Another entrance located to the rear of this facade has a simple, rounded canopy. The annex's cornice is composed of brick corbelling above which is a brick soldier course parapet.

PHYSICAL CONDITION:

Fair

THREATS:

This building is threatened by the suburban development spreading north from Jackson.

VERBAL BOUNDARY DESCRIPTION:

On the SE corner of Main and Montgomery Streets, see attached map.

ACREAGE: Approximately 1 1/4 acres

UTM REF:

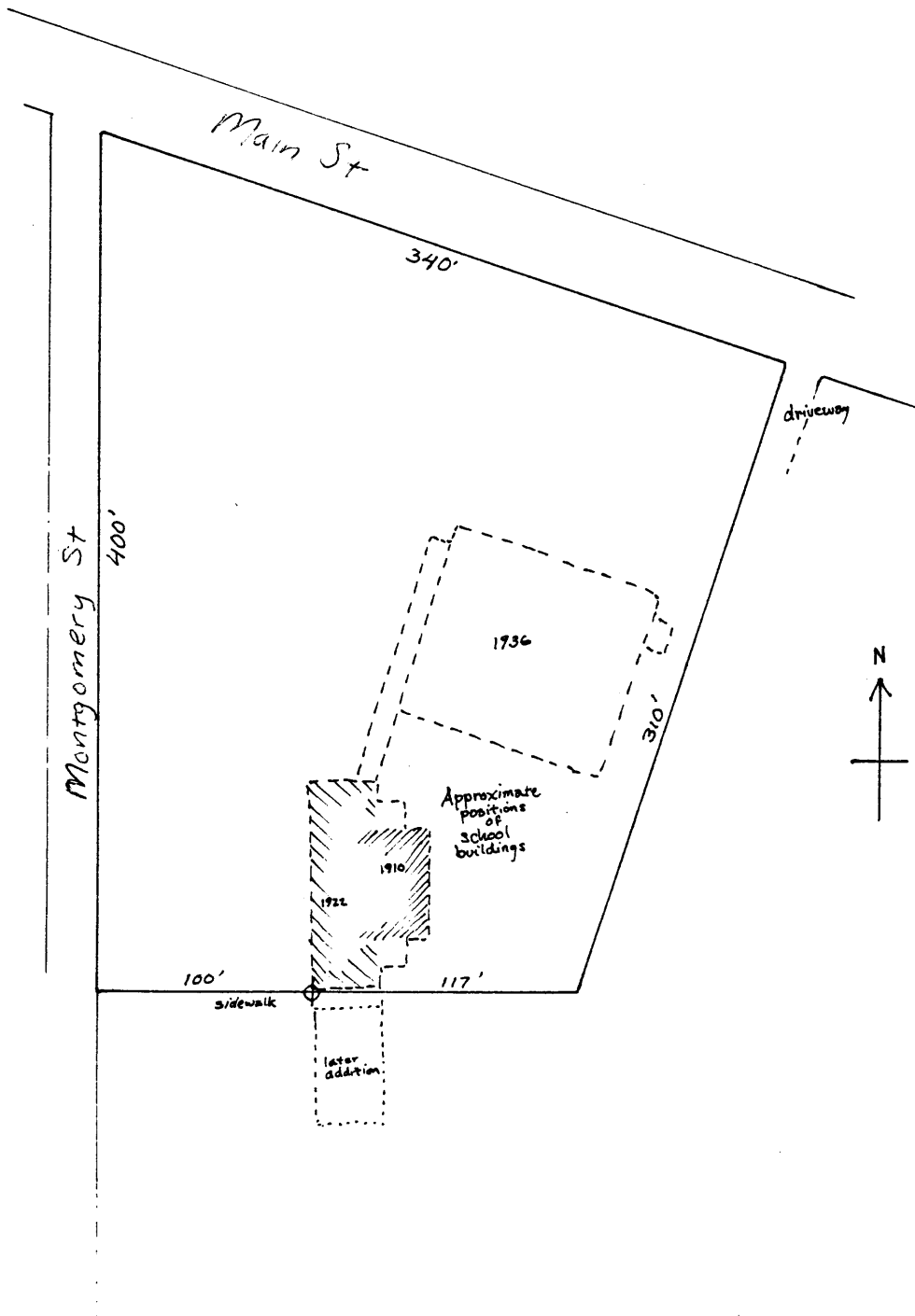
A	1 5	7 7 1 2 5 0	3 5 9 4 9 4 0
	ZONE EASTING		NORTHING
C			
B			
	ZONE EASTING		NORTHING
D			

FORM PREPARED BY:

Susan M. Enzweiler

DATE

7/85





Madison-Ridgeland Public School, Montgomery
St., front elevation, view to east
Madison, ^{MS}Madison County, Mississippi
Mississippi Dept. of Archives & History
Susan M. Enzweiler
July 1985
Photo 1 of 9



1936 PWA annex to Madison-Ridgeland Public
School, Montgomery St., northwest elevation,
view to east

MSA
Madison, Madison County, Mississippi

Mississippi Dept. of Archives & History

Susan M. Enzweiler

July 1985

Photo 2 of 9



The original 1910 Madison-Ridgeland Public
School & the 1922 addition in background
view to west

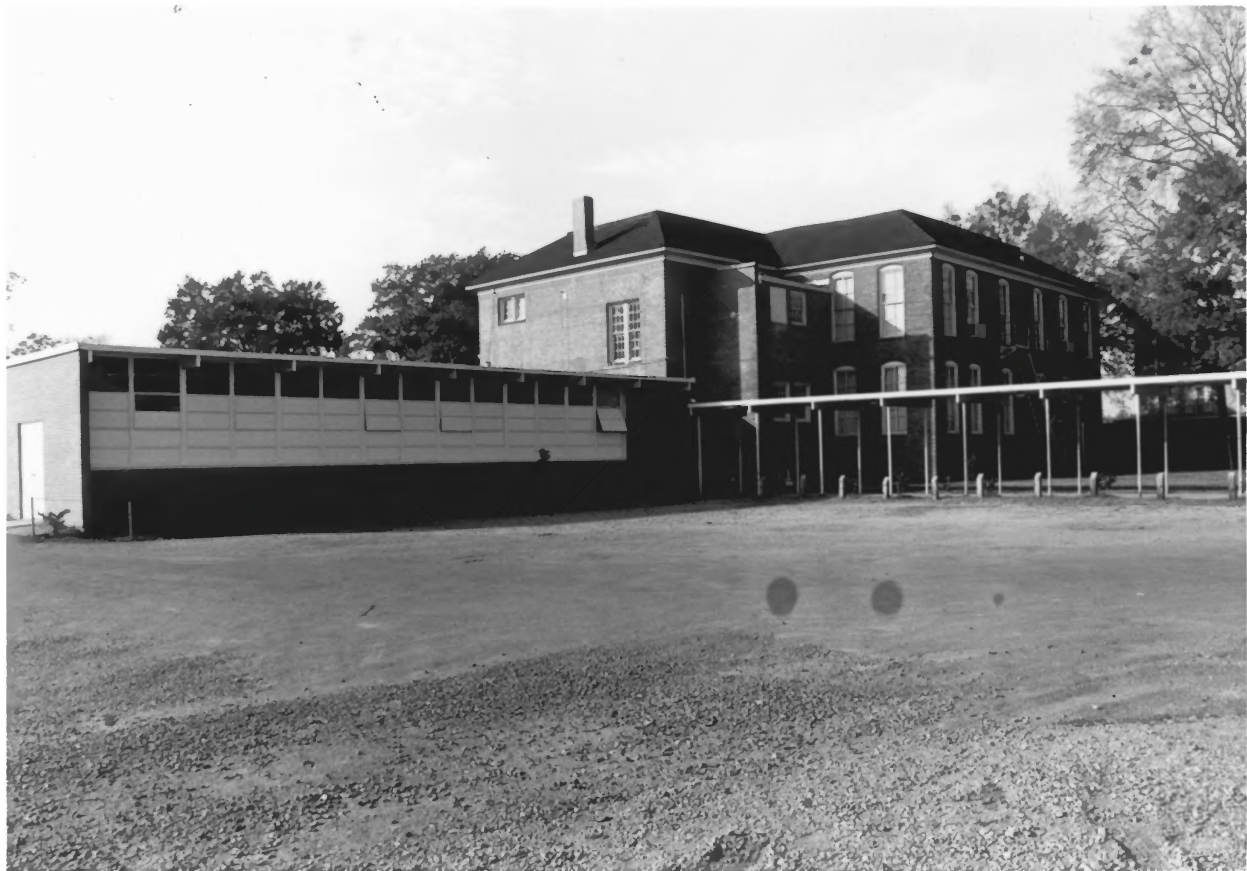
MSS
Madison, Madison County, Mississippi

Mississippi Dept. of Archives & History

Susan M. Enzweiler

November, 1985

Photo 3 of 9



The Madison-Ridgeland Public School with its
1960's addition, Montgomery Street,
southeast elevation, view to northwest
Madison, ^{MSA} Madison County, Mississippi
Mississippi Dept. of Archives & History
Susan M. Enzweiler
November, 1985
Photo 4 of 9



Connections between the 1910, 1922 & 1936 sections of the Madison-Ridgeland Public School (1910 section to the far left; 1922 section in center & center right; 1936 one story section to the far right), Montgomery Street, northeast elevation,

view to southwest

MRA
Madison, Madison County, Mississippi
Mississippi Dept. of Archives & History
Susan M. Enzweiler

November, 1985

Photo 5 of 9



1936 PWA annex to Madison-Ridgeland Public
School, Montgomery St., north & east eleva-
tions,

view to southwest

Madison, ^{MSA} Madison County, Mississippi

Mississippi Dept. of Archives & History

Susan M. Enzweiler

November, 1985

Photo 6 of 9



1936 PWA annex to Madison-Ridgeland Public
School, Montgomery St., east elevation
view to southwest

MDA
Madison, Madison County, Mississippi

Mississippi Dept. of Archives & History

Susan M. Enzweiler

November, 1985

Photo 7 of 9



1936 PWA annex to Madison-Ridgeland Public
School, Montgomery St., north & west eleva-
tions,

view to southeast

Madison, ^{MRA} Madison County, Mississippi

Mississippi Dept. of Archives & History

Susan M. Enzweiler

November, 1985

Photo 8 of 9



Canopy over entrance to 1936 PWA annex to
Madison-Ridgeland Public School, Montgomery
St., north elevation (close up),
view to southeast

^{MRA}
Madison, Madison County, Mississippi
Mississippi Dept. of Archives & History

Susan M. Enzweiler

November, 1985

Photo 9 of 9