

RECEIVED
JUL 13 1990

United States Department of the Interior
National Park Service

National Register of Historic Places
Registration Form

NATIONAL
REGISTER

This form is for use in nominating or requesting determinations of eligibility for individual properties or districts. See instructions in *Guidelines for Completing National Register Forms* (National Register Bulletin 16). Complete each item by marking "x" in the appropriate box or by entering the requested information. If an item does not apply to the property being documented, enter "N/A" for "not applicable." For functions, styles, materials, and areas of significance, enter only the categories and subcategories listed in the instructions. For additional space use continuation sheets (Form 10-900a). Type all entries.

1. Name of Property

historic name Union County Courthouse

other names/site number _____

2. Location

street & number Bankhead Street between Court Ave. & Camp Ave. N/A not for publication

city, town New Albany N/A vicinity

state Mississippi code MS county Union code 145 zip code 38652

3. Classification

Ownership of Property

- private
- public-local
- public-State
- public-Federal

Category of Property

- building(s)
- district
- site
- structure
- object

Number of Resources within Property

Contributing	Noncontributing
<u>1</u>	<u>2</u> buildings
_____	_____ sites
_____	_____ structures
_____	_____ objects
<u>1</u>	<u>2</u> Total

Name of related multiple property listing:
N/A

Number of contributing resources previously listed in the National Register 0

4. State/Federal Agency Certification

As the designated authority under the National Historic Preservation Act of 1966, as amended, I hereby certify that this nomination request for determination of eligibility meets the documentation standards for registering properties in the National Register of Historic Places and meets the procedural and professional requirements set forth in 36 CFR Part 60. In my opinion, the property meets does not meet the National Register criteria. See continuation sheet.

Kenneth A. P. Pool
Signature of certifying official Deputy State Historic Preservation Officer
Mississippi Department of Archives and History

JUNE 21, 1990
Date

State or Federal agency and bureau

In my opinion, the property meets does not meet the National Register criteria. See continuation sheet.

Signature of commenting or other official

Date

State or Federal agency and bureau

5. National Park Service Certification

I, hereby, certify that this property is:

- entered in the National Register. See continuation sheet.
- determined eligible for the National Register. See continuation sheet.
- determined not eligible for the National Register.
- removed from the National Register.
- other, (explain:)

Entered in the
National Register

Allan Byer

8/10/90

Signature of the Keeper

Date of Action

6. Function or Use

Historic Functions (enter categories from instructions)

Government: courthouse

Current Functions (enter categories from instructions)

Government: courthouse

7. Description

Architectural Classification
(enter categories from instructions)Classical Revival

Materials (enter categories from instructions)

foundation stonewalls brick

roof metalother

Describe present and historic physical appearance.

Situated at the southeastern edge of the business district of New Albany, facing northeast toward Bankhead Street, the Union County Courthouse is a monumental Classical Revival building built in 1909. It is composed as a three-story, cubical central block, surmounted by a dome, flanked by slightly recessed two-story wings terminating in projecting end pavilions. Resting on a low stone basement, the walls are clad in golden-tan brick and trimmed in stone. The facade is dominated by a broad tetrastyle portico of unfluted columns in the Roman Ionic order. Slightly narrower Ionic tetrastyle porticoes adorn the northwest and southeast ends of the building. A stone-trimmed entablature with a modillion cornice visually links the two-story portions of the building but does not extend around the corners of the three-story central block. External corners are trimmed with brick quoins.

The windows are generally one-over-one double-hung, with wood sashes, capped by elaborate projecting lintels. The upper-story windows at the center of the front elevation, which would have originally illuminated the judge's bench in the courtroom, have been closed up.

The most distinctive feature of the Union County Courthouse is its elegant Baroque-style metal dome. It is supported by a tall cylindrical drum, framed by four clusters of columns, and is surmounted by an open-sided lantern bearing a golden eagle at its pinnacle.

On the first story the interior arrangement consists of a short entrance hall leading to a transverse corridor lined with offices. The corridor has marble wainscoting and a terrazzo floor. A stairway rises from each end of the corridor. On the second story a short corridor in each wing leads to double doors on either side of the large square courtroom. The courtroom has been remodeled and has lost its original furnishings, but appears to retain its original spatial configuration. The ceiling of the courtroom rises to two-story height and occupies the space that appears on the exterior as a third story. It is possible that the courtroom may have contained a balcony, but if so, no trace of it remains visible. Aside from the loss of the original courtroom furnishings, the building retains a high degree of integrity.

The nominated property also contains the county jail and the new chancery court building, both of which are located to the rear of the courthouse. Both are nonhistoric and noncontributing.

8. Statement of Significance

Certifying official has considered the significance of this property in relation to other properties:

nationally statewide locally

Applicable National Register Criteria A B C D

Criteria Considerations (Exceptions) A B C D E F G

Areas of Significance (enter categories from instructions)

Architecture

Period of Significance

1909

Significant Dates

1909

Cultural Affiliation

N/A

Significant Person

N/A

Architect/Builder

Architect: Ostling, H.E. of Montgomery, AL
Contractor: Dobson, F.E. & Co.

State significance of property, and justify criteria, criteria considerations, and areas and periods of significance noted above.

The Union County Courthouse, built in 1909, is a locally important work of early twentieth century Classical Revival architecture, and is a well-executed and well-maintained example of the Classical Revival county courthouses built in Mississippi between about 1901 and 1920. It is one of only two good examples of Classical Revival architecture in New Albany (the other being the nearby First Baptist Church, built about 1923) and is the principal architectural landmark of Union County.

The Classical Revival style, in several variations, was by far the dominant architectural fashion for public buildings in Mississippi during the first two decades of the twentieth century. Although some important public buildings were built in the Victorian Romanesque style as late as 1902, by the time the New State Capitol was built in 1903, the preference for classical public buildings had swept the state. Of 35 county courthouses built between 1903 and 1920, 30 were of Classical Revival design, with the remainder displaying a loosely classical eclecticism. About 20 Classical Revival courthouses of this period still stand and retain a relatively high degree of integrity, including the Union County Courthouse. Between 1920 and 1930, Mississippi county courthouse design became much more eclectic, but tended to retain a classical vocabulary. By the 1930s, however, the designers of the state's major civic buildings had largely turned away from the Classical Revival and embraced the Art Deco style.

The Union County Courthouse is a good example of the Classical Revival civic architecture of its period and retains a high degree of architectural integrity. The only major impairment to its integrity is the loss of the original interior furnishings of the courtroom. The exterior of the building is unchanged, and its interior configuration is largely intact.

See continuation sheet

9. Major Bibliographical References

Historic Resources Inventory Files. Historic Preservation Division, Mississippi Department of Archives and History.

Previous documentation on file (NPS):

- preliminary determination of individual listing (36 CFR 67) has been requested
- previously listed in the National Register
- previously determined eligible by the National Register
- designated a National Historic Landmark
- recorded by Historic American Buildings Survey # _____
- recorded by Historic American Engineering Record # _____

See continuation sheet

Primary location of additional data:

- State historic preservation office
- Other State agency
- Federal agency
- Local government
- University
- Other

Specify repository: _____

10. Geographical Data

Acreage of property approx 1 acre

UTM References

A 16 15699 3818390
 Zone Easting Northing

C _____

B _____
 Zone Easting Northing

D _____

See continuation sheet

Verbal Boundary Description

Lots 42 through 47 of the original subdivision of the City of New Albany; bounded by Bankhead Street on the north, Camp Street on the east, Main Street on the south, and Court Avenue on the west; in the City of New Albany, Union County, Mississippi.

See continuation sheet

Boundary Justification

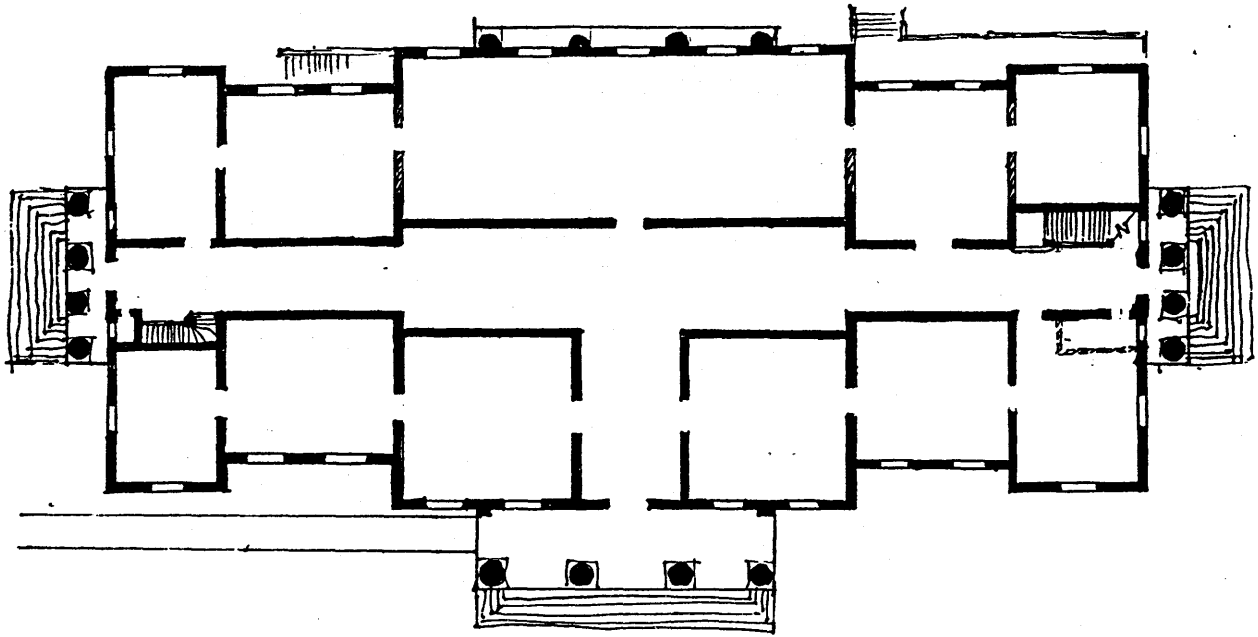
These lots comprise the block occupied by the Union County Courthouse along with the county jail and the new chancery court building, behind the courthouse. The entire block has been historically associated with the courthouse.

See continuation sheet

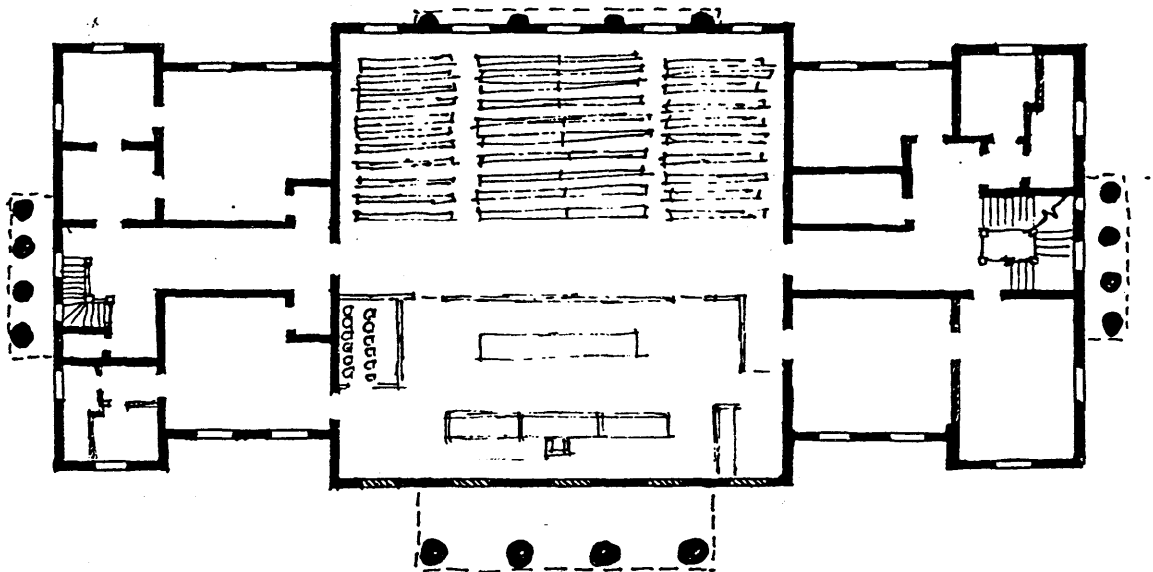
11. Form Prepared By

name/title Richard J. Cawthon, Chief Architectural Historian
 organization Miss. Department of Archives and History date May 7, 1990
 street & number P. O. Box 571 telephone (601) 359-6940
 city or town Jackson state MS zip code 39205

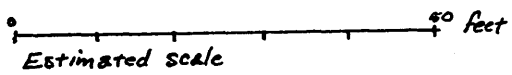
Union County Courthouse
New Albany, Mississippi
Approximate interior plan



First Story



Second story



**United States Department of the Interior
National Park Service**

**National Register of Historic Places
Continuation Sheet**

Union County Courthouse, New Albany, Union County, Mississippi
Section number _____ Page _____ Photographs

The following information is the same for all photographs:

1. Union County Courthouse
2. New Albany, Union County, Mississippi
3. Photo by Richard J. Cawthon
4. April 1990
5. Negatives: Mississippi Department of Archives and History

The photos are identified as follows:

- Photo 1: main (northeast) facade, viewed from east
Photo 2: exterior, viewed from southeast
Photo 3: detail of dome, viewed from northeast
Photo 4: first story corridor, view from southeast



Union County Courthouse, New Albany, Union County, MS



Union County Courthouse, New Albany, Union County, MS



Union County Courthouse, New Albany, Union County, MS



Union County Courthouse, New Albany, Union County, MS