

United States Department of the Interior  
National Park Service

RECEIVED

MAY 31 1988

NATIONAL  
REGISTER

This form is for use in nominating or requesting determinations of eligibility for individual properties or districts. See instructions in *Guidelines for Completing National Register Forms* (National Register Bulletin 16). Complete each item by marking "x" in the appropriate box or by entering the requested information. If an item does not apply to the property being documented, enter "N/A" for "not applicable." For functions, styles, materials, and areas of significance, enter only the categories and subcategories listed in the instructions. For additional space use continuation sheets (Form 10-900a). Type all entries.

1. Name of Property

historic name Mississippi Federation of Women's Clubs

other names/site number \_\_\_\_\_

2. Location

street & number 2407 North State Street

N/A  not for publication

city, town Jackson

N/A  vicinity

state Mississippi code MS

county Hinds

code 49

zip code 39216

3. Classification

Ownership of Property

- private
- public-local
- public-State
- public-Federal

Category of Property

- building(s)
- district
- site
- structure
- object

Number of Resources within Property

Contributing	Noncontributing
<u>1</u>	_____ buildings
_____	_____ sites
_____	_____ structures
_____	_____ objects
<u>1</u>	_____ Total

Name of related multiple property listing:

N/A

Number of contributing resources previously listed in the National Register 0

4. State/Federal Agency Certification

As the designated authority under the National Historic Preservation Act of 1966, as amended, I hereby certify that this  nomination  request for determination of eligibility meets the documentation standards for registering properties in the National Register of Historic Places and meets the procedural and professional requirements set forth in 36 CFR Part 60. In my opinion, the property  meets  does not meet the National Register criteria.  See continuation sheet.

Kenneth H. P. Pool

May 25, 1988

Signature of certifying official

Date

Deputy State Historic Preservation Officer

State or Federal agency and bureau

In my opinion, the property  meets  does not meet the National Register criteria.  See continuation sheet.

Signature of commenting or other official

Date

State or Federal agency and bureau

5. National Park Service Certification

I, hereby, certify that this property is:

- entered in the National Register.
  - See continuation sheet.
- determined eligible for the National Register.  See continuation sheet.
- determined not eligible for the National Register.
- removed from the National Register.
- other, (explain:)

William Egan

6-30-88

Signature of the Keeper

Date of Action

## 6. Function or Use

Historic Functions (enter categories from instructions)

Social: civic

Current Functions (enter categories from instructions)

Social: civic

## 7. Description

Architectural Classification  
(enter categories from instructions)

Colonial Revival

Materials (enter categories from instructions)

foundation concrete

walls brick

roof asphalt

other N/A

Describe present and historic physical appearance.

The Mississippi Federation of Women's Clubs headquarters building sits on a gentle knoll on the northwest corner of North State Street at Woodrow Wilson Drive. The building faces east to North State Street and is sited about one hundred feet from the street. The Georgian Revival, one-story, brick-veneered building is a symmetrical composition consisting of a five-bay, hipped-roof central block flanked by recessed, three-bay hipped wings. The roof is pierced by two chimneys with concrete caps, one at the southern end of the central block and a shorter one at the northern end of the northern wing. Brick is laid in Flemish bond, all corners are accentuated by cast-concrete quoins, and a modillioned cornice, cast-concrete water table, and concrete base extend around all elevations of the building. A flat-roof porte-cochere extends from the south side and features a full molded entablature with modillioned cornice supported by two pairs of Tuscan columns resting on brick piers. Each pair of columns is echoed on the side wall by a single pilaster.

The center-bay entrance of the central block is defined by a pedimented projection with circular window lighting the attic. A single-leaf, molded six-panel door is framed by a semi-circular fanlight with tracery and detached colonnettes supporting a molded frieze. The end blocks of the frieze are adorned with paterae and support classical urns. Detached sidelights set beneath splayed brick arches and filled with two-over-two, double-hung sash flank the entrance doorway. The windows flanking the entrance projection are set above molded panels and below cast-concrete sculptural panels with classical motifs. All windows of the building are topped with splayed brick arches, filled with six-over-six, double-hung sash, and are elaborated with original non-functional shutter blinds.

The rear, or westerly, elevation repeats the design motifs of the facade, but each bay of the central block is filled with double-leaf, glazed doors set beneath rectangular transoms and accentuated by sculptural panels like those on the facade. These doorways are ornamented by non-functional molded panel shutters. The openings of the central block are sheltered by the later addition of a shed-roof porch with exposed rafter ends and iron supports. An additional entrance,

United States Department of the Interior  
National Park Service

# National Register of Historic Places Continuation Sheet

Mississippi Federation of Women's Clubs, Hinds County, Mississippi  
Section number 7 Page 1

---

sheltered by a small gabled porch with iron supports, is located in the northern end bay and is filled with a single-leaf door with glazed upper panels.

On the interior, a short entrance foyer opens into a grand hall that extends the width of the building in a north-south direction. Transomed double-leaf glazed doors provide access between the hall and the entrance foyer to the west and the parlor to the east. Flanking the parlor to the north and south are a dining room and library, which are accessed from the hall by transomed single-leaf glazed doors. The parlor and library are visually divided by a screen of paired column and half-column that rest upon low wall piers and support an entablature formed by the cornice and picture molding that wrap around all elevations of parlor, library, and dining room. The three rooms are further elaborated with molded wall panels. The parlor and dining room are connected by a wide transomed opening filled with a pair of bifold glazed doors. The focal point of the three-room arrangement is the library mantelpiece which features classical motifs of fluted pilasters, central tablet with urns and swags, and end blocks with paterae. The library walls also have built-in bookcases. The more formal areas of the building are finished with molded, six-panel doors, molded window and door surrounds with two fasciae, and molded bases with two fasciae.

The long north-south hall is divided by unmolded arches at the point where the hall narrows when it extends into the recessed wings of the building. The northern wing is the residential portion of the building and the southern wing houses offices and storerooms. Exterior single-leaf, glazed doors are located at the end of each narrow hall.

The integrity of the Mississippi Federation of Women's Clubs building is outstanding with alterations limited primarily to the installation of acoustical ceiling tiles and the addition of the rear shed-roof porch. The original kitchen and ceramic tile bathrooms remain unaltered.

**8. Statement of Significance**

Certifying official has considered the significance of this property in relation to other properties:

nationally  statewide  locally

Applicable National Register Criteria  A  B  C  D

Criteria Considerations (Exceptions)  A  B  C  D  E  F  G

Areas of Significance (enter categories from instructions)

architecture  
social history

Period of Significance

1935-37

Significant Dates

1935-37

Cultural Affiliation

N/A

Significant Person

N/A

Architect/Builder

Architect: Naef, Robert W., and Associates

State significance of property, and justify criteria, criteria considerations, and areas and periods of significance noted above.

The Mississippi Federation of Women's Clubs headquarters building is a significant Mississippi expression of Georgian Revival architecture. Designed by Jackson, Mississippi, architect Robert W. Naef & Associates, it was built in 1935 with assistance from the Works Progress Administration on land leased by the Mississippi Federation of Women's Clubs from the State of Mississippi (Papers of the Mississippi Federation of Women's Clubs, Jackson, Mississippi). The headquarters building is representative of a movement among state federations to build and/or own state federation headquarters in the mid-twentieth century. This movement was concentrated largely in the South, and the Mississippi and Texas (1933) headquarters buildings were the only two headquarters constructed prior to 1940 (National Register nomination for the Texas Federation of Women's Clubs Headquarters, Papers of the Mississippi Federation of Women's Clubs, Jackson, Mississippi).

The Mississippi Federation of Women's Clubs was organized in Kosciusko in 1898 at a meeting of representatives from women's clubs in Vicksburg, Natchez, Jackson, Okolona, and Meridian. The Mississippi Federation joined the General Federation of Women's Clubs (organized in 1889) in 1904. The Mississippi organization has made continued contributions to Mississippi in the fields of civic, cultural, educational and philanthropic activities and was largely responsible for the formation of the Mississippi Forestry Commission and the State Library Commission (THE CLARION LEDGER AND JACKSON DAILY NEWS, May 26, 1968, Section D, p. 14).

Planning for the construction of a state headquarters building began in 1934, and, in 1935, federation members succeeded in having the legislature pass a bill that leased a state-owned lot to the organization. Architectural plans were approved in late 1935, the building was dedicated on November 5, 1936, and the organization occupied the building on March 17, 1937 (Papers of the Mississippi Federation of Women's Clubs, Jackson, Mississippi).

See continuation sheet

**United States Department of the Interior  
National Park Service**

## **National Register of Historic Places Continuation Sheet**

Mississippi Federation of Women's Clubs, Hinds County, Mississippi  
Section number   8   Page   1  

---

The architectural integrity of the headquarters building is outstanding with alterations limited primarily to the installation of acoustical tile ceilings. The building retains its original furnishings which were purchased from R. E. Kennington Company in Jackson (Papers of the Mississippi Federation of Women's Clubs, Jackson, Mississippi).

**9. Major Bibliographical References**

CLARION LEDGER AND JACKSON DAILY NEWS, May 26, 1968.

Jackson. Papers of the Mississippi Federation of Women's Clubs,  
Mississippi Federation of Women's Clubs.

Previous documentation on file (NPS):

- preliminary determination of individual listing (36 CFR 67) has been requested
- previously listed in the National Register
- previously determined eligible by the National Register
- designated a National Historic Landmark
- recorded by Historic American Buildings Survey # \_\_\_\_\_
- recorded by Historic American Engineering Record # \_\_\_\_\_

See continuation sheet

Primary location of additional data:

- State historic preservation office
- Other State agency
- Federal agency
- Local government
- University
- Other

Specify repository:

Miss. Fed. of Women's Clubs, Jackson,  
Miss.

**10. Geographical Data**

Acreage of property less than one acre

UTM References

A 

1	5
---	---

7	6	5	8	5	0
---	---	---	---	---	---

3	5	8	0	0	0	0
---	---	---	---	---	---	---

  
Zone Easting Northing

C 

--	--

--	--	--	--	--	--

--	--	--	--	--	--	--

B 

--	--

--	--	--	--	--	--

--	--	--	--	--	--	--

  
Zone Easting Northing

D 

--	--

--	--	--	--	--	--

--	--	--	--	--	--	--

See continuation sheet

Verbal Boundary Description The boundaries of the Mississippi Federation of Women's Clubs property is shown on the accompanying map entitled, "Survey of Property Leased by the Miss. Fed. of Women's Clubs, February 21, 1956."

See continuation sheet

Boundary Justification The boundary includes the city lot that has historically been associated with the property.

See continuation sheet

**11. Form Prepared By**

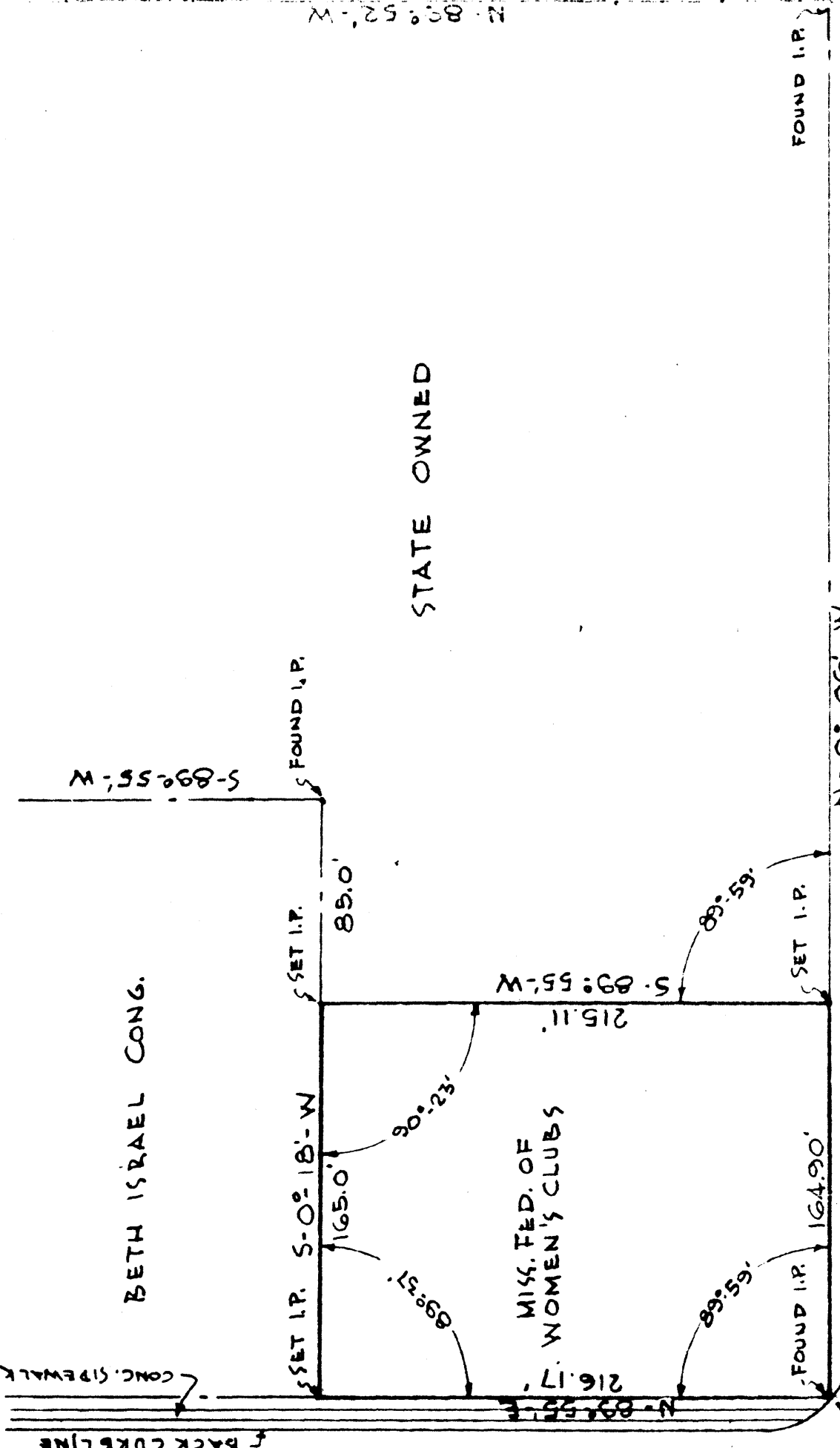
name/title Mary W. Miller and J. Neil Varnell

organization Natchez Preservation Services date March 31, 1988

street & number 506 High Street telephone (601) 442-9786

city or town Natchez state MS zip code 39120

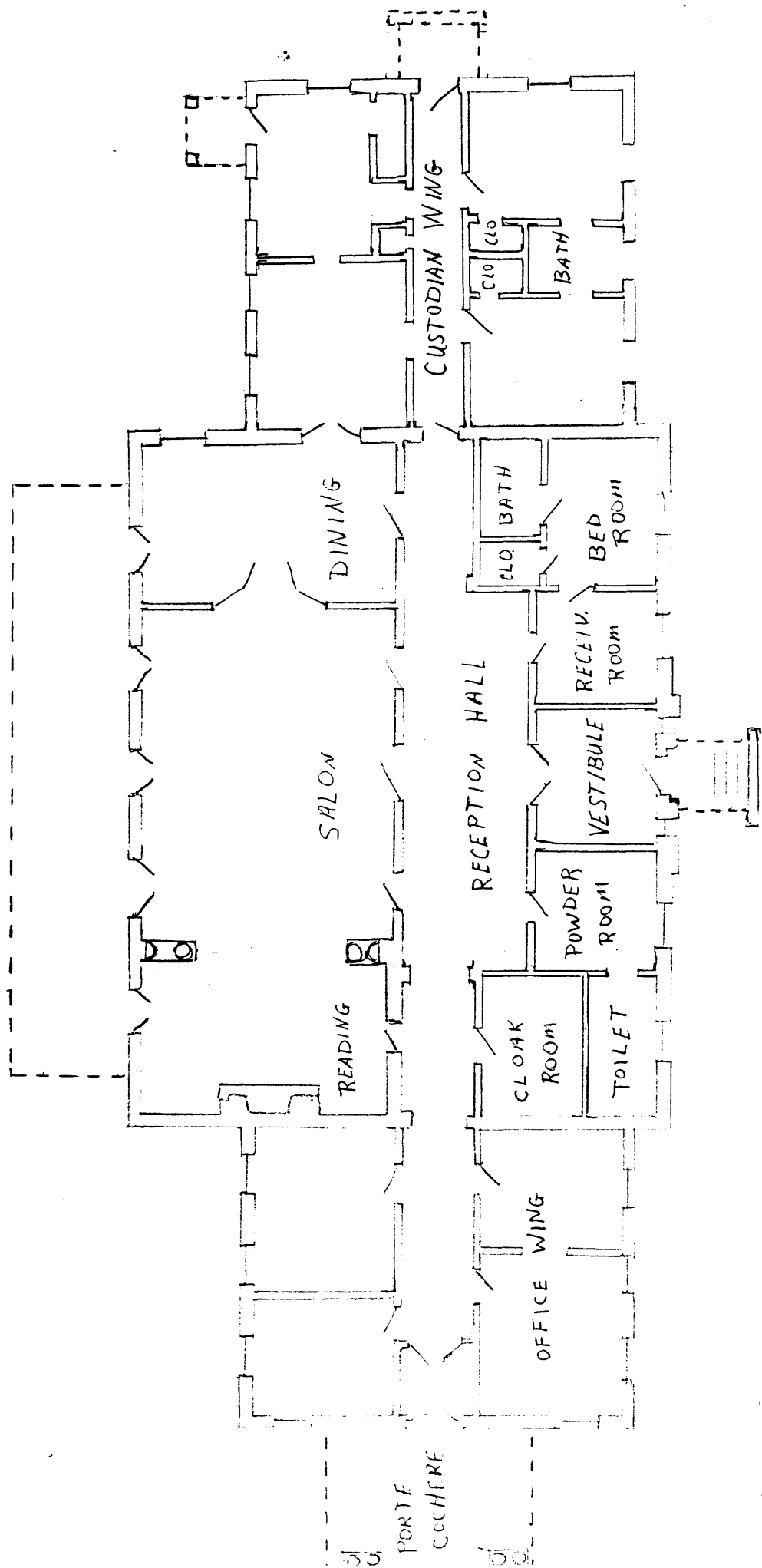
N. 89° 52' - W



WOODROW WILSON DR. (100')

SURVEY OF PROPERTY LEASED BY  
 MISS. FED. OF WOMEN'S CLUBS 2/21/56  
 SCALE: 1" = 60'

ROBERT H. YOUNG  
 CONSULTING ENGINEER



Mississippi Federation of Women's Clubs  
 Jackson, Hinds County, Mississippi





Mississippi Federation of Women's Clubs

Jackson, Hinds Co., Miss.



Mississippi Federation of Women's Clubs

Jackson, Hinds Co., Miss.



2  
4  
0  
7

Mississippi Federation of Women's Clubs  
Jackson, Hinds Co., Miss.



Mississippi Federation of Women's Clubs

Jackson, Hinds Co., Miss.