

United States Department of the Interior
National Park Service

National Register of Historic Places Registration Form

This form is for use in nominating or requesting determinations of eligibility for individual properties or districts. See instructions in *Guidelines for Completing National Register Forms* (National Register Bulletin 16). Complete each item by marking "x" in the appropriate box or by entering the requested information. If an item does not apply to the property being documented, enter "N/A" for "not applicable." For functions, styles, materials, and areas of significance, enter only the categories and subcategories listed in the instructions. For additional space use continuation sheets (Form 10-900a). Type all entries.

1. Name of Property

historic name _____
other names/site number OAKS HISTORIC DISTRICT

2. Location

street & number Hardy/Second/Railroad/11th Avenue n/a not for publication
city, town Hattiesburg n/a vicinity
state Mississippi code MS county Forrest code 35 zip code 39401

3. Classification

Ownership of Property	Category of Property	Number of Resources within Property	
<input checked="" type="checkbox"/> private	<input type="checkbox"/> building(s)	Contributing	Noncontributing
<input checked="" type="checkbox"/> public-local	<input checked="" type="checkbox"/> district	<u>230</u>	<u>51</u> buildings
<input type="checkbox"/> public-State	<input type="checkbox"/> site	<u>0</u>	<u>0</u> sites
<input type="checkbox"/> public-Federal	<input type="checkbox"/> structure	<u>0</u>	<u>0</u> structures
	<input type="checkbox"/> object	<u>0</u>	<u>0</u> objects
		<u>230</u>	<u>51</u> Total

Name of related multiple property listing:
n/a

Number of contributing resources previously listed in the National Register 0

4. State/Federal Agency Certification

As the designated authority under the National Historic Preservation Act of 1966, as amended, I hereby certify that this nomination request for determination of eligibility meets the documentation standards for registering properties in the National Register of Historic Places and meets the procedural and professional requirements set forth in 36 CFR Part 60. In my opinion, the property meets does not meet the National Register criteria. See continuation sheet.

Signature of certifying official _____ Date _____
Deputy State Historic Preservation Officer
State or Federal agency and bureau _____

In my opinion, the property meets does not meet the National Register criteria. See continuation sheet.

Signature of commenting or other official _____ Date _____
State or Federal agency and bureau _____

5. National Park Service Certification

I, hereby, certify that this property is:

- entered in the National Register. _____
 See continuation sheet.
- determined eligible for the National Register. See continuation sheet. _____
- determined not eligible for the National Register. _____
- removed from the National Register. _____
- other, (explain:) _____

Signature of the Keeper

Date of Action

6. Function or Use

Historic Functions (enter categories from instructions)
DOMESTIC: Single Dwelling

Current Functions (enter categories from instructions)
DOMESTIC: Single Dwelling

7. Description

Architectural Classification
(enter categories from instructions)

Bungalow/Craftsman
Colonial Revival
Mediterranean
Queen Anne

Materials (enter categories from instructions)

foundation brick, concrete
walls wood, brick, stucco
roof asphalt, asbestos
other

Describe present and historic physical appearance.

The Oaks Historic District developed after the turn of the century primarily as the Kamper & Whinnery Extension subdivision in the area southwest of the business district. Small portions of the district were subdivided as the Hardy Subdivision of Block FNG (1904) and the W.C. Bennett Subdivision (1906). The area west of 10th Avenue is part of the Hattiesburg Heights Proper Subdivision. The major wide streets of Mamie, Adeline, Corinne, and West Pine run northeast-southwest, and secondary streets of 3rd, 4th, 5th, 6th, 7th, 8th, and 9th avenues run northwest-southeast; only Concert runs east-west.

The irregular boundaries of the district, as illustrated on the map, are encircled by Hardy Street on the north, Second on the east, Railroad Street/Illinois Central Railroad on the south, and 11th Avenue on the west. The boundaries were established in such a manner as to create a geographical area with continuity of design, spatial patterns, and historical documentation of the development pattern. Within the boundaries are 230 contributing elements and 51 non-contributing elements. Most of the non-contributing elements are compatible with respect to design, and do not compromise the integrity of the district; only a few are actual intrusions into the district's sense of place.

Along the north edge of the district, Hardy Street was eliminated because it has been commercialized with "strip" development and has lost both historic fabric on historic elements and historic elements themselves. The historic east end of the district was the intersection of Hardy and Pine, but this edge has suffered loss of integrity and sense of place. The historic south edge of the neighborhood was the Illinois Central Railroad line and Railroad Street. Houses facing the railroad were historically the least desirable, and as a result have been poorly maintained. This loss of integrity has resulted in its exclusion from the district. The area immediately west of 10th Avenue and extending further down Concert is very similar in character to the west end of the Oaks District. It is not included in the district because historically it is not part of the Kamper & Whinnery Extension, but rather the Hattiesburg Heights Proper-Subdivision (1906), which has a different street pattern and lacks the large oaks of the Oaks District.

The terrain of the district is flat, and the street pattern is gridiron, set parallel to the train tracks and diagonally to the city's general layout. The major

8. Statement of Significance

Certifying official has considered the significance of this property in relation to other properties:

nationally statewide locally

Applicable National Register Criteria A B C D

Criteria Considerations (Exceptions) A B C D E F G

Areas of Significance (enter categories from instructions)
Architecture

Period of Significance
1900-1942

Significant Dates
n. a.

Cultural Affiliation
n. a.

Significant Person
n. a.

Architect/Builder
n. a.

State significance of property, and justify criteria, criteria considerations, and areas and periods of significance noted above.

The Oaks Historic District is significant as an identifiable and cohesive historic district which has architectural integrity and serves as a tangible link to Hattiesburg's growth into the regional center of southeast Mississippi. Its area of significance is architectural, as the 230 contributing elements reflect a continuity of design style, type, period, and method of construction. The period of significance of the district is 1900 through 1942.

Although initially subdivided during the late nineteenth century, the Oaks District is a product of the early twentieth century, with its greatest growth between the years 1920 and 1930, when 46% of the extant elements were built. Twenty-five percent were built prior to that decade, and 29% after.

The majority of houses in the district were built for middle-class families. It is possible that some of the elements in the district were prefabricated (ready-cut) houses. The Aladdin Company, a national home-building firm based in Bay City, Michigan, operated a plant in Hattiesburg. The 1925 Sanborn map illustrates the plant at North Street and West 4th Street. The Gordon Van Tine Company, national homebuilders headquartered in Davenport, Iowa, operated two plants in Hattiesburg, one of which was located at Royal and West Pine streets. Their advertisement in Hattiesburg's city directories from 1927 to 1941 stated that they sold ready-cut houses, retail lumber, and millwork.

Those houses that were not ready-cut were likely design-built by local contractors such as Wesley Wright, who advertised such projects. Fifty-eight different builders advertised in directories from 1905 to 1941.

Some elements were probably architect-designed, although this has not been documented. There were nine local architects listed in city directories from 1905-1941: Edward C. Hearon, T. Roscoe Hearon, R. Clifford Hearon, Juan Landry, Carl Matthes, Robert E. Lee, Henry G. Markel, and W.M. Stratton. Additionally, there were out-of-town architects working in Hattiesburg as well, such as Emile Weil and Rathbone DeBuys of New Orleans, Louisiana; Penn Krouse of Meridian, Mississippi; and George Barber of Knoxville, Tennessee.

See continuation sheet

9. Major Bibliographical References

American Life Foundation. Aladdin Homes, 1918-1919. Watkins Glen, N.Y.: American Life Books, 1985 reprint.

American Life Foundation. Gordon-Van Tine Company Architectural Details, 1915 Watkins Glen, N.Y.: American Life Books, 1985 reprint..

Claiborne, J.F.H. "A Trip Through the Piney Woods." Publications of the Mississippi Historical Society IX:487-538.

Continental Consultants, Inc. "Comprehensive Plan for the City of Hattiesburg, Mississippi," 1988.

See continuation sheet

Previous documentation on file (NPS):

- preliminary determination of individual listing (36 CFR 67) has been requested
- previously listed in the National Register
- previously determined eligible by the National Register
- designated a National Historic Landmark
- recorded by Historic American Buildings Survey # _____
- recorded by Historic American Engineering Record # _____

Primary location of additional data:

- State historic preservation office
- Other State agency
- Federal agency
- Local government
- University
- Other

Specify repository: _____

10. Geographical Data

Acreage of property 108

UTM References

A

1	6
---	---

2	8	1	6	5	0
---	---	---	---	---	---

3	4	6	7	6	3	0
---	---	---	---	---	---	---

Zone Easting Northing

C

1	6
---	---

2	8	0	6	5	0
---	---	---	---	---	---

3	4	6	6	7	5	0
---	---	---	---	---	---	---

B

1	6
---	---

2	8	1	6	5	0
---	---	---	---	---	---

3	4	6	6	7	5	0
---	---	---	---	---	---	---

Zone Easting Northing

D

1	6
---	---

2	8	0	6	5	0
---	---	---	---	---	---

3	4	6	7	6	3	0
---	---	---	---	---	---	---

See continuation sheet

Verbal Boundary Description

see accompanying scale map

See continuation sheet

Boundary Justification

Please refer to Section 7: Description, paragraphs two and three

See continuation sheet

11. Form Prepared By

name/title Robert J. Cangelosi, Jr., A.I.A.

organization KOCH AND WILSON ARCHITECTS date 15 July 1992

street & number 1100 Jackson Avenue telephone 504-581-7023

city or town New Orleans state LA zip code 70130

United States Department of the Interior
National Park Service

National Register of Historic Places
Continuation Sheet

Section number 7 Page 2 - OAKS DISTRICT, HATTIESBURG, MISS.

streets of Concart, Adeline, and Mamie are exceptionally wide for Hattiesburg--some even still retain their original brick paving--and are lined with water oaks forming a canopy over the street.

At first the area was slow to develop; however, the introduction of streetcars along Hardy and West Pine stimulated growth. Each decade until 1930, growth doubled in the district. Many of the first houses were built on multiple-lot tracts closest to downtown. These early residences were generally eclectic in style, such as the 1906 Colonial Revival house at 801 West Pine [Photo 17 of 24], the 1900 Queen Anne house at 208 4th Avenue [Photo 22 of 24], and the 1904 Mediterranean-style house at 808 West Pine. Between 1905 and 1915, residents of the developing district planted the rapid-growing water oaks, establishing the unifying character of the district.

By 1920, building sites diminished to single lots as development strengthened away from town. The 1920s were by far the greatest growth years for the district, as nearly one-half (130) of its elements were built during this decade. Consequently, 53% (148) of the homes are in the Craftsman style.

The nationally prevalent Craftsman style was very popular in Hattiesburg for several reasons. First, as a product of the "New South," Hattiesburg lacked an architectural heritage from which to borrow. Second, as the hub of the "Piney Woods" of south Mississippi, there was an abundance of material to build these bungalows. Third, Hattiesburg was home to two plants which mass produced Craftsman bungalows and their components--the Michigan-based Aladdin Company, and the Iowa-based Gordon Van Tine Company.

Good examples of the Craftsman-style bungalow exist throughout the district, such as 404 5th Avenue. The style is used almost exclusively on both Concart and 10th Avenue. Typically, the Craftsman-style house in Hattiesburg is similar to the style nationally, featuring low-pitched, side-gabled roofs with wide eave overhangs, exposed roof rafters, knee braces, and wall shingles. Porches are either full or partial width, and typically supported on tapered boxed columns set on masonry pedestals. Windows are double hung, with the upper sash divided into smaller lights, usually four. Applied ornament is avoided, although it appears on some altered residences.

In plan, the Craftsman house is very compact and efficiently arranged. The entrance opens directly into the living room, which is separated from the dining room by a space divider, often incorporating bookcases. Off the living room is a small hall connecting usually to two bedrooms with a small bath between. A small kitchen is adjacent to the dining room.

United States Department of the Interior
National Park Service

National Register of Historic Places
Continuation Sheet

Section number 7 Page 3 - OAKS DISTRICT, HATTIESBURG, MISS.

In addition to the Craftsman style, a few examples of other styles are represented, such as Colonial Revival (43), Mediterranean (22), Queen Anne (20) Mission (5), Tudor (3), Spanish (2), Norman (1), and Prairie (1). However, with over 50% of the extant housing stock in the Craftsman style, it defines the dominant character of the Oaks District.

Outstanding contributing elements eligible for the National Register in their own right include:

809 Adeline, a Queen Anne cottage built about 1905 for Herbert Camp;

915 Adeline, a circa 1900 Queen Anne cottage with Colonial Revival detailing [Photo 7 of 24];

301 Mamie, a stuccoed Mission Revival school, formerly Camp Elementary, built in 1907 [Photo 14 of 24];

801 W. Pine, a large, two-story Colonial Revival residence, built circa 1906 [Photo 17 of 24];

1002 W. Pine, a rambling, one-story, brick Mission bungalow, built about 1929 for lumberman Frank Tatum [Photo 20 of 24];

110 Pinehurst, an impressive two-story, brick Colonial Revival residence, built in 1927 by W.O. Tatum, president of Tatum Lumber Company [Photo 21 of 24];

409 4th Avenue, a circa 1924, well-proportioned, stucco Mediterranean villa [Photo 23 of 24]; and

312 6th Avenue, a Mediterranean-style house, built about 1926; and

410 6th Avenue, a circa 1928, two-story brick Colonial Revival residence, built for G.L. Hawkins.

The Oaks District retains today the character it acquired during its development, with many of the original oaks still lining the wide streets, and most of the architectural fabric (79%) still intact. The district presents a suburban feeling, with its well-maintained, upper-middle-class residences.

The inventory of buildings included in the Oaks District is arranged alphabetically, according to street, with buildings cited by element number and by street address in ascending numerical order. Photograph references are made parenthetically at the end of the descriptive text if a photograph is included with the nomination.

Elements are evaluated individually, according to the following rating system:

United States Department of the Interior
National Park Service

National Register of Historic Places Continuation Sheet

Section number 7 Page 4 - OAKS DISTRICT, HATTIESBURG, MISS.

C Contributing buildings are essential to the district's sense of place, and sustain the architectural and historical significance of the district.

Contributing elements may be altered, but not to the point that their integrity is compromised.

NC Non-Contributing buildings do not contribute to the historical character of the district.

Non-Contributing buildings are those which disrupt the cohesion of the historic environment.

Non-Contributing elements include those buildings which are so deteriorated that their future is uncertain.

Non-Contributing elements include those historical buildings which have been remodeled to such a degree that their architectural integrity has been compromised. Restoration of original features could cause these buildings to become contributing.

Non-Contributing buildings include those residences which are compatible in scale, mass, material, setting, and detail, but which were constructed after the period of significance.

Dating of elements within the district is based on Sanborn Insurance Maps, tax cards in the City Assessor's office, city directories, and architectural style.

The following is a summary of the 281 elements in the district:

<u>USE:</u>		
RESIDENTIAL:	276	98%
NON-RESIDENTIAL:	5	2%
 <u>STORIES:</u>		
UNDER 2	249	89%
2 AND OVER	32	11%
 <u>MATERIALS:</u>		
WOOD SIDING	205	73%
BRICK VENEER	53	19%
STUCCO	21	7%
CMU	2	1%

United States Department of the Interior
National Park ServiceNational Register of Historic Places
Continuation SheetSection number 7 Page 5 - OAKS DISTRICT, HATTIESBURG, MISS.RATINGS:

CONTRIBUTING	230	80%
NON-CONTRIBUTING	51	20%
TOTAL	281	

STYLES:

CRAFTSMAN	148	52%
COLONIAL REVIVAL	43	15%
MEDITERRANEAN	22	8%
QUEEN ANNE	20	7%
OTHERS	48	17%
TOTAL	281	

CONSTRUCTION DATES:

1900-1909	17	6%
1910-1919	52	19%
1920-1929	130	46%
1930-1939	23	8%
1940-1942	23	8%
1945-1992	36	13%
TOTAL	281	

A description of each element in the Oaks District follows.

United States Department of the Interior
National Park Service

National Register of Historic Places
Continuation Sheet

Section number 7 Page 6 - OAKS DISTRICT, HATTIESBURG, MISS.

- | | | | | |
|----|--|-------------------------|-----------------|-----------|
| 1. | 601 ADELINE | CRAFTSMAN | CA. 1923 | C |
| | One-story bungalow of irregular plan, shallow hip roof and cross gable. The roof is covered with asphalt shingles and has one visible chimney. Walls are stuccoed, with decorative brick trim. The entrance is slightly recessed in a small porch and flanked to the west by two 6/6 double-hung windows. To the east is a glass-enclosed room added since 1961 which incorporates a former small porch in the east end of the house. Sanborn Insurance maps indicate that the house was enlarged towards the east between 1925 and 1931. | | | |
| 2. | 604 ADELINE | CRAFTSMAN | CA. 1926 | C |
| | One-story, wood-frame, roughly square-planned bungalow with wood siding and a shallow multiple gable roof with asphalt shingles, two visible chimneys and exposed rafter ends. The glass and wood entrance door is off a recessed porch to the west of a pair of 1/1 double-hung windows. Since 1961 the house has been enlarged to the rear with the removal of a small porch and addition of a full-width porch, which was later enclosed. | | | |
| 3. | 605 ADELINE | CRAFTSMAN | CA. 1923 | C |
| | One-story, wood-frame residence of roughly rectangular plan, running perpendicular to the street with shallow gable roof, exposed rafter ends, knee braces, and gable-end attic windows. The full-width front porch is independently roofed and supported by squat wood columns set on brick piers, between which spans a masonry railing. The centrally located front door has a transom and double-hung sidelights, and is flanked by pairs of 4/1 double-hung windows. There are small projections on each side of the house, centrally located; the west side projection has a screened porch. | | | |
| 4. | 606 ADELINE | QUEEN ANNE | CA. 1923 | NC |
| | One and a half story residence, significantly altered. The original roof line is clearly visible above the front addition. The roof is covered with asphalt shingles, and the structure is clad in wood siding. Sanborn Insurance maps indicate constant changes in the street-front appearance since the house first appeared on a 1925 map--originally a full-width front porch was backed by a one and a half story front portion and a two-story rear. | | | |
| 5. | 607 ADELINE | INTERNATIONAL | CA. 1970 | NC |
| | One-story limestone, marble and brick commercial building. Windows are aluminum and the entrance is an aluminum storefront system. | | | |
| 6. | 609 ADELINE | COLONIAL REVIVAL | CA. 1940 | C |
| | One and a half-story brick-veneer house with steep gabled roof with asphalt shingles and two dormers, one of which has been converted to a door. The six-panel front door is flanked on each side by 6/6 double-hung windows. The off-centered front porch has wrought-iron railings and pilasters. | | | |

United States Department of the Interior
National Park ServiceNational Register of Historic Places
Continuation SheetSection number 7 Page 7 - OAKS DISTRICT, HATTIESBURG, MISS.

-
- | | | | | |
|-----|--|-----------------------------|-----------------|----------|
| 7. | 610 ADELINE | CRAFTSMAN | CA. 1923 | C |
| | <p>One and a half story wood-frame bungalow, with rectangular plan. The gable roof has asbestos shingles, exposed rafter ends, knee braces, one chimney, and one large dormer with a door and two 6/1 double-hung windows. The full-width front porch wraps down the west side, is independently roofed and supported by wood columns. A carport was added to the east side between 1931 and 1961, and a screened porch added to the rear between 1925 and 1931. Windows are both 6/1 and 8/1 double hung.</p> | | | |
| 8. | 701 ADELINE | CRAFTSMAN | CA. 1914 | C |
| | <p>One-story, wood-frame bungalow, oriented perpendicular to the street. The steep gable roof has asbestos shingles and knee braces, and extends forward on the east end to form an entrance porch with mock half-timbering in the gable end, brick columns and railing, and glass-enclosed east end. Windows are typically 6/1, 9/1 and 12/1 double hung; the front door has nine lights over three panels. The rear of the house has been enlarged since 1961.</p> | | | |
| 9. | 704 ADELINE | QUEEN ANNE/CRAFTSMAN | CA. 1914 | C |
| | <p>One-story, wood-frame residence with a square plan. The hipped roof has decorative rafter ends, one chimney, and a triangular attic vent. The entrance porch is undercut from the main roof. The front door has six panels and is flanked by a typical 9/9 double-hung window. The east elevation has a 12-foot wide bay. Since 1961 the house has been enlarged to the west, and a rear east corner porch has been enclosed.</p> | | | |
| 10. | 705 ADELINE | CRAFTSMAN | CA. 1914 | C |
| | <p>One-story, wood-frame bungalow, oriented parallel to the street and clad with asbestos shingled. The complex shallow roof has multiple gables, two chimneys, asphalt shingles and exposed rafter ends. The corner screened entry porch has an 8-light/2-panel door. Windows are 3/1 and 16/1 double hung and often grouped. An open porch is on the rear.</p> | | | |
| 11. | 706 ADELINE | COLONIAL REVIVAL | CA. 1941 | C |
| | <p>Two-story brick apartment, symmetrically massed about two axis. The hip roof has asbestos shingles, boxed eaves, a large attic vent, and a cross hip over the six-foot-deep projecting mass. The centrally located entrance porch has a copper roof and a 3-light/1-panel sidelight. windows are typically 6/6 grouped.</p> | | | |

United States Department of the Interior
National Park ServiceNational Register of Historic Places
Continuation SheetSection number 7 Page 8 - OAKS DISTRICT, HATTIESBURG, MISS.

-
- | | | | | |
|--|--------------------|--------------------------------|-----------------|----------|
| 12. | 707 ADELINE | CRAFTSMAN | CA. 1919 | C |
| <p>One and a half story, wood-frame bungalow of a roughly L-shaped mass, oriented perpendicular to the street. The steep gable roof has asbestos shingles, decorative rafter ends, one chimney and one dormer. The partial-width front porch is created by a projection of the main roof. Windows are typically 6/6 double hung, and the front door has six panels. A carport has been added on the west side since 1931, and the L-portion was added between 1925 and 1931. A partial-width rear enclosed porch is backed by an open porch, off of which extends a breezeway to a rear apartment, all added since 1961.</p> | | | | |
| 13. | 709 ADELINE | MEDITERRANEAN/CRAFTSMAN | CA. 1914 | C |
| <p>One-story, wood-frame residence, oriented perpendicular to the street, with hip roof with one chimney, asbestos shingles, boxed eaves, shallow brackets, and one large dormer. The full-width front porch is independently roofed. The 15-light front door with transom is centrally located and flanked by typical 16/16 double-hung windows. Between 1925 and 1931, the house was enlarged to the rear west corner, and between 1931 and 1961, a garage was added to the west front corner of the house and an addition made to the east side.</p> | | | | |
| 14. | 711 ADELINE | CRAFTSMAN | CA. 1923 | C |
| <p>One-story, "ideal-wall" brick bungalow, oriented perpendicular to the street. The shallow gable roof has exposed rafter ends, knee braces, and an intersecting cross gable. The full-width front porch is screen enclosed and undercut from the main roof. The front door has one light over one wood panel, and a single-light transom. Windows are typically 9/1. Sanborn Insurance maps indicate some changes to the rear of the house between 1925 and 1931.</p> | | | | |
| 15. | 715 ADELINE | CRAFTSMAN | CA. 1923 | C |
| <p>One and a half story brick bungalow with step gable roof with ridge parallel to the street and one large chimney. A small screened porch on the west end of the house is flanked on the east by a smaller open porch, off which is the six-panel entrance door. Windows are typically 6/6 double hung. A carport has been added to the rear since 1961.</p> | | | | |
| 16. | 801 ADELINE | PRAIRIE | CA. 1923 | C |
| <p>This two-story stuccoed residence with brick trim has a rectangular plan, oriented perpendicular to the street. The shallow hip roof has boxed eaves and one chimney. Windows are 9/1 and 12/1 double hung, often grouped. The one-story, full-width porch is screen enclosed. A porch was added to the rear between 1925 and 1931, and later enclosed.</p> | | | | |

United States Department of the Interior
National Park Service

National Register of Historic Places
Continuation Sheet

Section number 7 Page 9 - OAKS DISTRICT, HATTIESBURG, MISS.

- | 17. | 805 ADELINE | MISSION | CA. 1930 | C |
|-----|--|--------------------|-----------------|-----------|
| | One-story brick bungalow, picturesquely massed, with complex red-tiled roof, boxed eaves, and one chimney. Windows are similar to Queen Anne windows, with eleven-lights-over-one. The eleven-light front door is located in the east bay of the partial-width front porch. An open porch is on the east side. [Photo 3 of 24] | | | |
| 18. | 809 ADELINE | QUEEN ANNE | CA. 1905 | C |
| | One-story, wood-frame residence, oriented parallel to the street, with steep hip roof. The full-width front porch is undercut from the main roof, and supported by paired chamfered columns set on wood bases. The entrance opening is quite large, with double-hung sidelights with diamond panes in the upper sash and transom; the other street-facing windows have a similar light pattern. [Photo 4 of 24] | | | |
| 19. | 810 ADELINE | CRAFTSMAN | CA. 1923 | C |
| | One-story, wood-frame bungalow with rectangular plan, oriented perpendicular to the street. The gable roof has deep overhangs, knee braces, exposed rafter ends, and one chimney. The full-width front porch extends down the east side of the house, with a porte cochere midway; the side porch was added after 1961. The front door has six panels, and windows are typically 4/1. | | | |
| 20. | 812 ADELINE | CRAFTSMAN | CA. 1923 | C |
| | One-story, wood-frame bungalow, oriented perpendicular to the street, with shallow gable roof with deep overhang, exposed rafter ends, knee braces, and asphalt shingles. The nearly full-width, three-bay front porch has a wood railing and a five-panel wood entrance door in the center bay, flanked by pairs of 6/1 double-hung windows. Towards the rear, the house has been extremely remodeled over the years. | | | |
| 21. | 814 ADELINE | TRADITIONAL | CA. 1978 | NC |
| | One-story, brick-veneer, U-shaped house, oriented parallel to the street. The large hip roof is undercut to form a full-width front porch, supported by Tuscan wood columns. The decorative wood entrance door in the central bay is flanked by two 9/6 windows. | | | |
| 22. | 815 ADELINE | CRAFTSMAN | CA. 1916 | C |
| | Two-story, stuccoed residence, square in mass, on a spacious, well-vegetated lot. The full-width, one-story front porch is screened in and supported by squat box columns set on masonry pedestals. The 9/1 and 12/1 double-hung windows are frequently paired. The pyramidal roof has exposed rafter ends, asbestos shingles, and a gabled dormer. A one-story porch on the rear is flanked by utility rooms. | | | |

United States Department of the Interior
National Park Service

National Register of Historic Places
Continuation Sheet

Section number 7 Page 10 - OAKS DISTRICT, HATTIESBURG, MISS.

- | 23. | 901 ADELINE | CRAFTSMAN | CA. 1927 | C |
|-----|--|-----------------------------|----------|---|
| | One-story, brick-veneered bungalow, oriented perpendicular to the street. The picturesque roof has multiple gables and three chimneys. The entrance porch and a carport are under the main roof and supported by brick columns. A four-foot-deep bay is on the west side of the house, and a recessed side porch is on the east. The house was enlarged to the rear between 1931 and 1961. Windows are 6/1 double hung and often grouped. | | | |
| 24. | 904 ADELINE | CRAFTSMAN | CA. 1925 | C |
| | Two-story, blocky in plan, asbestos-clad residence on a spacious lot. The multiple hipped roof has asphalt shingles, exposed rafter ends, and one chimney. The full-width, independently roofed front porch wraps down the east side, terminating in a four-foot-deep projection. The center bay of the porch is two stories and enclosed, with 4/1 double-hung windows, the typical type. The front door has six panels. | | | |
| 25. | 905 ADELINE | QUEEN ANNE/COLONIAL REVIVAL | CA. 1910 | C |
| | One-story cottage with vinyl siding, oriented perpendicular to the street. The steep picturesque hipped roof has a cross hip, two cross gables, and one decorative chimney. The independently roofed front porch, abutting a west projection, originally wrapped down the east side and abutted another eight-foot-deep projection which has since been enclosed. The paired wood porch columns are likely 1930s replacements, as is the balustrade. A rear wing was added between 1915 and 1925, and the rear was enlarged after 1961 and a carport and open porch added. A breezeway connects the house with a garage. | | | |
| 26. | 908 ADELINE | MEDITERRANEAN/CRAFTSMAN | CA. 1914 | C |
| | One-story, wood-frame, L-shaped residence, oriented perpendicular to the street. The hipped roof has a large central dormer and is undercut to form a full-width, four-bay front porch. Windows vary greatly. Originally there were two shallow bays on each side and a porch across the rear; the porch was removed after 1961 and the house was enlarged to the east rear corner. | | | |
| 27. | 909 ADELINE | CRAFTSMAN | CA. 1919 | C |
| | One-story, wood-frame residence, oriented perpendicular to the street and clad with wood shakes. The shallow, multiple-gabled roof has one chimney, exposed rafter ends and purlins. The front porch abuts a west-end projection and wraps around the southeast corner. At the northeast corner, the house projects six feet. Windows are varied and grouped. After 1961, carport was added to the rear and a projection to the west side. [Photo 6 of 24] | | | |

United States Department of the Interior
National Park Service

National Register of Historic Places
Continuation Sheet

Section number 7 Page 11 - OAKS DISTRICT, HATTIESBURG, MISS.

- | 28. | 911 ADELINE | CRAFTSMAN | CA. 1920 | C |
|-----|---|-----------------------------|----------|---|
| | One-story, wood-frame bungalow with rectangular plan, oriented perpendicular to the street. The shallow gable roof has exposed rafter ends, knee braces, and one chimney, and extends partially to cover the full-width, screened-in front porch. A small 3x12-foot bay projects on the east side of the house. Windows are typically 9/1 double hung. The bungalow has been enlarged to the rear since 1961, and a porte cochere has been added to the west side since 1985. | | | |
| 29. | 915 ADELINE | QUEEN ANNE/COLONIAL REVIVAL | CA. 1900 | C |
| | One and a half story residence, oriented perpendicular to the street. The steep roof has dutch-lap asbestos shingles, two chimneys, and a decorative central dormer. The independently roofed front porch has Corinthian columns and a turned wood railing, and extends across the entire street facade and wraps both the east and west corners, terminating at a bay on each side. The central porch bay projects forward in a half circle. The entrance has a six-panel front door and single-light transom, flanked by 1/1 double-hung windows. The house has been enlarged to the rear since 1961. [Photo 7 of 24] | | | |
| 30. | 1010 ADELINE | COLONIAL REVIVAL | CA. 1940 | C |
| | One and a half story, brick-veneer residence, oriented parallel to the street. The steep gabled roof has two dormers and a cross gable over the east-end projection with a prominent chimney. The entrance off a small stoop has a single-light transom and wood door. Windows are 6/6 double hung. A porch on the east end of the house has been enclosed. A breezeway connects the rear of the house to a rear building. | | | |
| 31. | 1011 ADELINE | CRAFTSMAN | CA. 1914 | C |
| | One and a half story wood frame bungalow, oriented perpendicular to the street. The steep gable roof has exposed rafter ends and knee braces. The street-facing gable end has three 9/1 double-hung windows. On the west side is a shallow projecting bay. The original front porch covered only the west end of the facade. A post-1961 addition abuts the front porch and extends down the east side, incorporating an original projection, then across the rear and out to the east. A 26x24 wood deck is on the rear. | | | |
| 32. | 1015 ADELINE | NO STYLE | CA. 1924 | C |
| | One-story, wood-frame bungalow, oriented perpendicular to the street, with a hipped roof with one dormer in the west slope and a cross gable on the east slope. The independently roofed, full-width porch that is now enclosed originally wrapped the east side, terminating at a ten-foot projection. The six-panel entrance door with three-light transom is flanked by 1/1 double-hung windows. The rear of the house has been altered. | | | |

United States Department of the Interior
National Park Service

National Register of Historic Places
Continuation Sheet

Section number 7 Page 12 - OAKS DISTRICT, HATTIESBURG, MISS.

- | | | | | |
|-----|--|-------------------------|-----------------|-----------|
| 33. | 1100 ADELINE | CRAFTSMAN | CA. 1926 | C |
| | One-story stucco residence, blocky in plan, with front and rear projection on the west end. The shallow hip roof has two cross hips on the west end, boxed eaves, and two chimneys. The entrance is centrally located off a small porch. Windows are typically 4/1 double hung, often paired. An undercut porch on the southeast corner is now glass enclosed. On the west side of the house is a 3x15-foot bay. | | | |
| 34. | 1104 ADELINE | NO STYLE | CA. 1953 | NC |
| | One-story, nearly square-massed, brick-veneer residence with shallow gable roof, full-width front porch undercut from the main roof and supported by cast-iron pilasters, metal windows, and a southwest corner garage. | | | |
| 35. | 1109 ADELINE | COLONIAL REVIVAL | CA. 1940 | C |
| | One and a half story, square-massed, brick-veneer residence with a northwest corner rear wing. The steep gable roof has two dormers and one chimney. The symmetrical facade has a centrally located entrance composed of a six-panel door flanked by 4-lights/1-panel sidelights. To each side of the entrance is an 8/8 double-hung window. | | | |
| 36. | 1110 ADELINE | CRAFTSMAN | CA. 1923 | C |
| | One-story, wood-frame, asbestos-sided bungalow with rectangular mass. The shallow roof has exposed rafter ends, knee braces, and one chimney. The partial-width front porch is undercut from the main roof and has a 3-light/3-panel door in the east bay, flanked on either side by pairs of 4/1 double-hung windows. | | | |
| 37. | 1113 ADELINE | COLONIAL REVIVAL | CA. 1938 | C |
| | Two-story, wood-frame rectangular mass, oriented parallel to the street, backed by a one-story section and flanked to the east by a one-story enclosed porch and garage. The roof is gabled. The entrance is off a centrally located porch supported by Ionic columns. The elaborate doorway has 12-light sidelights, a fan window and transom, and is flanked by 8/1 double-hung windows. | | | |
| 38. | 1114 ADELINE | CRAFTSMAN | CA. 1923 | NC |
| | One-story, wood-frame, L-shaped, extensively remodeled bungalow with interesting cross-gable roof. A partial-width front porch leading to the carport is supported by very thin columns. A projecting bay is on the west side of the house. The entrance has a louvered protective door, and windows are 4/1 double hung. | | | |

United States Department of the Interior
National Park Service

National Register of Historic Places
Continuation Sheet

Section number 7 Page 13 - OAKS DISTRICT, HATTIESBURG, MISS.

- | Section Number | Address | Architectural Style | Construction Date | Condition |
|--|--------------|---------------------|-------------------|-----------|
| 39. | 1115 ADELINE | COLONIAL REVIVAL | CA. 1936 | C |
| Two-story masonry apartment building, symmetrically massed and oriented parallel to the street. The main gable roof is flanked by two smaller gables and has a central dormer. The small, one-story entrance porch is in the center of the street facade, and two-story porches are on each end. Windows are typically 6/6 double hung, symmetrically placed. | | | | |
| 40. | 1116 ADELINE | COLONIAL REVIVAL | CA. 1942 | C |
| One-story masonry residence with gable roof and undercut, screen-enclosed entrance porch on the southeast corner. The entrance has a 10-light sidelight, and is flanked to the west by a ribbon of three 6/6 double-hung windows and then a single 6/6 double-hung window. To the rear is an east-end wing, a carport, porch and utility room, all modified after 1961. | | | | |
| 41. | 1118 ADELINE | CRAFTSMAN | CA. 1942 | C |
| One-story, brick-veneer residence, oriented perpendicular to the street. The street facade is dominated by a series of four gables, all developing off the main gable. The entrance in the forwardmost projection has a six-panel wood door protected by an iron gate, and is flanked by a pair of 6/6 double-hung windows. On the southwest corner is a carport, and on the southeast an enclosed porch. | | | | |
| 42. | 1200 ADELINE | RANCH | CA. 1962 | NC |
| Two modern, brick-veneer apartments, oriented perpendicular to the street, with shallow gable roofs undercut to form entrance porches. | | | | |
| 43. | 1201 ADELINE | MISSION | CA. 1926 | C |
| One-story, L-shaped stucco bungalow, oriented perpendicular to the street. The gable roof is intersected in the northwest corner by another gable roof protecting a side addition built between 1931 and 1961. In the southeast corner, an L-shaped porch has been partially enclosed with french doors. The entrance in the projecting portion of the porch has a 3-light/4-panel door and 2-light/1-panel sidelights. Windows are typically 4/1 double hung. | | | | |
| 44. | 1204 ADELINE | CRAFTSMAN | CA. 1923 | C |
| One-story, wood-frame bungalow with an L-plan. The southwest corner projection was added after 1961. The roof is composed of three intersecting gables with exposed rafter ends and purlins and one chimney. The entrance porch wraps the northeast corner and is partially screen enclosed. The entrance in the west bay is flanked by a pair of 8/1 windows. To the east, the house projects slightly forward and has a ribbon of three 8/1 double-hung windows. | | | | |

United States Department of the Interior
National Park Service

National Register of Historic Places
Continuation Sheet

Section number 7 Page 14 - OAKS DISTRICT, HATTIESBURG, MISS.

- | 45. | 1205 ADELINE | CRAFTSMAN | CA. 1924 | C |
|-----|--|------------------|----------|---|
| | One-story, wood-frame bungalow with a gable roof, exposed rafter ends and knee braces. The house has been extensively remodeled--the east end of the front porch has been enclosed, a carport added to the west side, and a major addition made after 1961 incorporates a rear porch and addition added between 1925 and 1931. The front door has six lights over a single panel, and the typical window is 4/1 double hung. | | | |
| 46. | 1207 ADELINE | CRAFTSMAN | CA. 1924 | C |
| | One-story, wood-frame, rectangular-plan bungalow, oriented perpendicular to the street. The shallow gable roof has asphalt shingles, knee braces, and non-original boxed eaves. The full-width front porch is undercut from the main roof, screen enclosed, and supported by boxed columns. In the rear northeast corner is an original open porch, as well as a carport and utility room that were added after 1961. | | | |
| 47. | 1209 ADELINE | CRAFTSMAN | CA. 1924 | C |
| | One-story, wood-frame bungalow, oriented perpendicular to the street, with gable roof, asphalt shingles, exposed rafter ends and knee braces. The undercut, full-width front porch is supported by boxed columns set on brick piers. A rear addition and carports at the front and rear on the east side have been added since 1961. The typical window is 4/1 double hung, and the front door has six panels. | | | |
| 48. | 1210 ADELINE | COLONIAL REVIVAL | CA. 1940 | C |
| | One-story, Cape Cod cottage with vinyl siding, oriented parallel to the street. The shallow gable roof has boxed eaves and a cross gable over an entrance porch supported by boxed columns. The typical window is 6/6 double hung. | | | |
| 49. | 1211 ADELINE | CRAFTSMAN | CA. 1926 | C |
| | One-story, stucco bungalow with gable roof, two jerkin-head roof ends, exposed rafter ends and purlins. The undercut entrance porch on the northwest corner has an 8-light door, and the typical window is 8/1 double hung. On the east side is a projecting open porch and utility room | | | |
| 50. | 1213 ADELINE | CRAFTSMAN | CA. 1926 | C |
| | One-story, stucco bungalow with multiple-gable roof, exposed rafter ends and purlins. The enclosed east-end porch originally wrapped the east side, and the iron pilaster and railing are replacements. The front door has three lights and three panels; windows are typically 4/1 double-hung, and often grouped. There was originally a rear porch. | | | |

United States Department of the Interior
National Park Service

National Register of Historic Places
Continuation Sheet

Section number 7 Page 15 - OAKS DISTRICT, HATTIESBURG, MISS.

- | Section Number | Name | Style | CA. | Rating |
|----------------|--|------------------|----------|--------|
| 51. | 1215 ADELINE | CRAFTSMAN | CA. 1926 | C |
| | One-story, stucco bungalow, with multiple-gable roof, knee braces, exposed rafter ends, and one chimney. The southwest entrance porch projects slightly and is supported by squat, boxed columns set on brick piers. Windows are typically 12/1 double hung. A carport has been added to the west side of the house since 1985, and a rear, northeast projection and rear porch since 1961. | | | |
| 52. | 1216 ADELINE | CRAFTSMAN | CA. 1942 | C |
| | One-story, brick-veneer residence, oriented parallel to the street. The gable roof breaks over the front porch and intersects a cross gable over the west projection. The porch has a series of brick arches. The typical window is 6/6 double hung. | | | |
| 53. | 1300 ADELINE | CRAFTSMAN | CA. 1925 | C |
| | One-story, wood-frame bungalow of rectangular mass, oriented perpendicular to the street. The hipped roof has exposed rafter ends, knee braces, and two chimneys. An intersecting cross gable extends to form the entrance porch, supported by cast-iron pilasters. A projection has been added on each side of the house since 1961, as have a carport and utility room to the rear. Windows are typically 4/1 double hung, and the front door is louvered. | | | |
| 54. | 1301 ADELINE | CRAFTSMAN | CA. 1928 | C |
| | One-story, wood-frame bungalow with complex roof, exposed rafter ends, knee braces, and one chimney. The nearly full-width, eight-foot-deep front porch is supported by cast-iron pilasters set on brick piers. The front door has eight lights, and the double-hung windows have four lights over one. The house widens as it moves away from the street. | | | |
| 55. | 1302 ADELINE | COLONIAL REVIVAL | CA. 1942 | C |
| | One-story Cape Cod cottage, clad in asbestos siding, oriented parallel to the street, with four gabled roofs. The front door is symmetrically placed on the front mass and flanked by windows. On the east side of the house is a garage, and on the west a sixteen-foot wing. | | | |
| 56. | 1305 ADELINE | CRAFTSMAN | CA. 1930 | C |
| | One-story masonry bungalow, oriented perpendicular to the street. The complex, picturesque roof has asbestos shingles, exposed rafter ends, and one chimney. The partial-width front porch is supported by brick columns. The typical window is 4/1 double hung. There is a recess on each side of the house, a carport and utility room on the east side, and an open porch to the rear. | | | |

United States Department of the Interior
National Park Service

National Register of Historic Places
Continuation Sheet

Section number 7 Page 16 - OAKS DISTRICT, HATTIESBURG, MISS.

- | Section number | Name | Style | CA. | NC |
|----------------|---|-----------|------|----|
| 57. | 1307 ADELINE | NO STYLE | 1978 | NC |
| | Nondescript commercial structure with brick veneer on the first floor and plywood siding on the second. The door and windows are aluminum. | | | |
| 58. | 704 CAMP | TUDOR | 1940 | C |
| | One-story, wood-frame, nearly square-massed residence with brick veneer and asbestos wall shingles. The gable roof has multiple gable ends, one cross gable, boxed eaves, and one chimney. The primary entrance is off a stoop on the south end; the wood door has a single light. Windows are typically 6/6 double hung. A secondary entrance is in an enclosed porch on the north end. | | | |
| 59. | 708 CAMP | CRAFTSMAN | 1924 | C |
| | One of three, once identical, one-story, wood-frame bungalows, oriented perpendicular to the street. The gable roof has exposed rafter ends, knee braces, one chimney, and a louvered attic vent in the gable end. The three-bay, full-width front porch is undercut from the main roof and supported by four boxed, tapered columns set on masonry piers. The door is six-paneled, and the typical window 4/1 double hung. Originally there was one small bay on the south side; a second bay was added after 1961. There was originally a rear wing on the north side,, and a porch across the rear. A major addition has been added since 1961 on the south end of the rear. The house is presently clad in asbestos siding. | | | |
| 60. | 710 CAMP | CRAFTSMAN | 1924 | C |
| | One of three, once identical, one-story, wood-frame bungalows, oriented perpendicular to the street. The gable roof has exposed rafter ends, knee braces, one chimney, and a louvered attic vent in the gable end. The three-bay, full-width front porch is undercut from the main roof and supported by four boxed, tapered columns set on masonry piers. The door is six-paneled, and the typical window 4/1 double hung. The small bay on the south side and a carport on the north side show on the 1925 Sanborn map. Originally there was a rear wing on the north end with a porch across the rear. Since 1961 the original porch has been removed and an addition made on the south rear corner. | | | |
| 61. | 711 CAMP | CRAFTSMAN | 1924 | C |
| | One-story, wood-frame bungalow with gable roof, exposed rafter ends, knee braces, and one chimney. The north-corner, stuccoed front porch is also gable roofed, with exposed rafter ends and knee braces. The front door is six-paneled, and the double-hung windows have nine lights. On the north elevation is a non-original carport, backed by a non-historic addition. | | | |

United States Department of the Interior
National Park Service

National Register of Historic Places
Continuation Sheet

Section number 7 Page 17 - OAKS DISTRICT, HATTIESBURG, MISS.

- | 62. | 712 CAMP | CRAFTSMAN | CA. 1924 | C |
|-----|--|-----------|----------|---|
| | One of three once identical, one-story, wood-frame bungalows, oriented perpendicular to the street. The gable roof has exposed rafter ends, knee braces, one chimney, and a louvered attic vent in the gable end. The three-bay, full-width front porch is undercut from the main roof and supported by four boxed, tapered columns set on masonry piers. The door is six-paneled, and the typical window 4/1 double hung. There is an original rear wing on the north end adjacent to a screen-enclosed porch engulfing a smaller original porch. | | | |
| 63. | 713 CAMP | CRAFTSMAN | CA. 1926 | C |
| | One-story, wood-frame bungalow, oriented perpendicular to the street. The shallow gable roof runs parallel to the street and has asbestos shingles, a large shed dormer, and one chimney. The full-width, three-bay front porch has four circular columns. The six-panel door in the central bay is flanked by three 9/1 double-hung windows. A carport has been added in the north rear corner. | | | |
| 64. | 714 CAMP | CRAFTSMAN | CA. 1924 | C |
| | One-story, wood-frame bungalow, oriented perpendicular to the street. The shallow gable roof with deep overhangs, knee braces, one chimney, and an intersecting gable over the partial-width front porch on the north corner supported by boxed columns set on brick piers. The porch wraps down the left side of the house, where it is screen enclosed. The typical window is 4/1 double hung, and the centrally located front door has three lights over four panels. Additions have been made on the north rear corner and the rear wing. | | | |
| 65. | 800 CAMP | CRAFTSMAN | CA. 1924 | C |
| | One-story, wood-frame bungalow, oriented perpendicular to the street. The shallow gable roof has deep overhangs, knee braces, one chimney, and an intersecting cross gable over the partial-width front porch on the north corner, supported by boxed columns set on brick piers. The porch wraps down the left side of the house, where it is screen enclosed. The typical window is 4/1 double hung, and the centrally located front door has three lights over four panels. Additions have been made on the north rear corner and rear wing. | | | |
| 66. | 801 CAMP | CRAFTSMAN | CA. 1924 | C |
| | One-story, wood-frame bungalow, clad in asbestos siding, oriented perpendicular to the street, with a gable roof, a jerkin-head end, exposed rafter ends, knee braces, and an attic window in the gable end. The full-width, three-bay front porch is undercut from the main roof and supported by four boxed columns set on brick piers. The six-panel front door is flanked by pairs of 4/1 double-hung windows. A carport and utility room have been added at the rear of the house. [Photo 8 of 24] | | | |

United States Department of the Interior
National Park Service

National Register of Historic Places
Continuation Sheet

Section number 7 Page 18 - OAKS DISTRICT, HATTIESBURG, MISS.

- | 67. | 802 CAMP | CRAFTSMAN | CA. 1926 | C |
|-----|--|------------------|-----------------|-----------|
| | One-story, wood-frame bungalow with shallow gable roof with exposed rafter ends and knee braces, extending over a partial-width front porch on the south side, forming a second gable end. Windows are replacement aluminum, and the door has six panels. | | | |
| 68. | 803 CAMP | CRAFTSMAN | CA. 1924 | C |
| | One-story, wood-frame bungalow with shallow roof, exposed rafter ends, and two chimneys. The partial-width, screen-enclosed front porch recesses into the front and out from the main mass of the house. It is supported by boxed, tapered, squat columns set on brick piers. Across the original front porch has been added an aluminum porch, which ties into an aluminum carport. | | | |
| 69. | 804 CAMP | CRAFTSMAN | CA. 1924 | C |
| | One-story, wood-frame, stuccoed bungalow with gable roof, two cross gables, exposed rafter ends, and one chimney. The ten-foot-deep entrance porch recesses into the house plan four feet on the north end of the street elevation, and is supported by small, boxed columns set on masonry piers. A very large window and six-panel front door are off the porch. The typical window is 2/2 double hung. There is a small projection on the south elevation. | | | |
| 70. | 806 CAMP | CRAFTSMAN | CA. 1924 | C |
| | One-story, wood-frame, stuccoed bungalow, oriented perpendicular to the street. The front portion is eleven feet narrower than the rear, and has a gable roof running perpendicular to the other, with exposed rafters and purlins and one chimney. The undercut front porch is screen enclosed and supported by very small, grouped columns set on masonry piers. The front door has six panels and the typical window is 4/1 double hung. An open porch is across the rear of the house. | | | |
| 71. | 808 CAMP | CRAFTSMAN | CA. 1924 | C |
| | One-story, wood-frame bungalow clad in asbestos siding an oriented perpendicular to the street on spacious grounds. The gable roof projects over a half-width front porch on the north end of the street facade. A screened porch and south end wing are on the rear. Windows are typically 4/4 double-hung. | | | |
| 72. | 107 CONCERT | NO STYLE | CA. 1946 | NC |
| | Two-story, wood-frame, rectangular structure, set parallel to the street. The gable roof has asphalt shingles and exposed rafter ends. Doors are varied (6-lights/3-panels, 6-panel, and vertical boarded), as are windows (6/6 and 1/1). Exterior stairs are on the east side. | | | |

United States Department of the Interior
National Park Service

National Register of Historic Places
Continuation Sheet

Section number 7 Page 19 - OAKS DISTRICT, HATTIESBURG, MISS.

- | Section number | Address | Style | CA. | Grade |
|----------------|--|-----------|----------|-------|
| 73. | 200 CONCERT | CRAFTSMAN | CA. 1930 | C |
| | One and a half story brick residence with steep, picturesque roof. Double-hung windows are grouped. The entrance is in the forwardmost projection. [Photo 9 of 24] | | | |
| 74. | 598 CONCERT | CRAFTSMAN | CA. 1930 | C |
| | One-story, brick-veneer; bungalow with a carport and an open porch on the east side of the street side, a recess on the west elevation, and a screened porch on the rear. The gabled roof has two street-facing cross gables, boxed eaves, and one chimney. Windows are grouped and 4/1 double hung. Aluminum awnings shade the windows and porch. | | | |
| 75. | 600 CONCERT | CRAFTSMAN | CA. 1923 | C |
| | One-story, wood-frame bungalow, oriented perpendicular to the street, with picturesque roof, two chimneys, boxed eaves, 4/1 double-hung windows, and screen-enclosed, partial-width front porch supported by boxed columns set on brick piers. | | | |
| 76. | 601 CONCERT | CRAFTSMAN | CA. 1923 | C |
| | One-story, wood-frame bungalow, oriented perpendicular to the street, with gable roof, jerkin-head ends, cross and extending gables with similar ends, boxed eaves, partial-width front porch supported by metal pilasters, 6/6 double-hung windows, and a six-panel door. | | | |
| 77. | 602 CONCERT | CRAFTSMAN | CA. 1923 | C |
| | One-story, wood-frame bungalow with gable roof, one chimney, exposed rafter ends, knee braces, partial-width front porch centered on the facade, and 4/2 double-hung windows. | | | |
| 78. | 604 CONCERT | CRAFTSMAN | CA. 1925 | C |
| | One-story bungalow with gable roof, oriented perpendicular to the street, with exposed rafter ends, knee braces, 4/1 double-hung windows, aluminum siding, and an attached carport supported by metal pilasters. | | | |
| 79. | 605 CONCERT | CRAFTSMAN | CA. 1926 | C |
| | One-story, wood-frame bungalow with gable roof, exposed rafter ends, knee braces, one chimney, gable attic vents, 6/1 double-hung windows, and enclosed partial-width entry porch, and 15/1 door. | | | |

United States Department of the Interior
National Park Service

National Register of Historic Places
Continuation Sheet

Section number 7 Page 20 - OAKS DISTRICT, HATTIESBURG, MISS.

- | 80. | 611 CORINNE | CRAFTSMAN | CA. 1919 | C |
|-----|--|------------------|----------|----|
| | Well-detailed bungalow, oriented perpendicular to the street. The complex roof has multiple gables with decorative half-timbering in the gable ends, exposed rafters, knee braces, and one chimney. The entrance porch on the southwest corner originally extended down the west elevation, but has been enclosed. The typical window is 8/1 double hung. There is an unroofed porch on the southeast corner. A northeast wing was added between 1925 and 1931, and an addition to the rear between 1931 and 1961. | | | |
| 81. | 626 CORINNE | TUDOR | CA. 1930 | C |
| | One and a half story, brick-veneer residence, oriented parallel to the street. The steep gable roof has a cross gable over a street-facing projection, two chimneys, and half-timbering in the gable ends. On the northeast corner is a porch with corner brick columns. The entrance is just to the west of the street-facing projection, and has a small protective overhang. A screened porch is on the west elevation. The rear of the house projects six feet on the southeast corner. Windows are typically 6/1 double hung. | | | |
| 82. | 706 CORINNE | CRAFTSMAN | CA. 1923 | C |
| | One-story, stucco bungalow, oriented perpendicular to the street. The shallow hip roof has exposed rafter ends, knee braces and asphalt shingles. The entrance porch is undercut from the main roof on the east side of the front elevation. The typical window is 4/1 double hung, and the front door has six panels. An original recessed porch on the east elevation has been incorporated into a wooden projecting wing. | | | |
| 83. | 707 CORINNE | CRAFTSMAN | CA. 1919 | C |
| | One-story, wood-frame bungalow, oriented perpendicular to the street. The hipped roof has a cross gable over an original east-projecting porch, exposed rafter ends and an attic vent in the porch gable end. To the west of the original porch has been added, since 1961, an independently roofed entrance porch, supported by iron pilasters, with a six-panel door and three-panel wooden side panels. The typical window is 9/1 double hung. A carport was added to the east of the original porch between 1931 and 1961. | | | |
| 84. | 709 CORINNE | COLONIAL REVIVAL | CA. 1953 | NC |
| | One-story, wood-frame bungalow, oriented perpendicular to the street. The gable roof has boxed eaves, and its ridge runs parallel to the street. On the west third of the street facade is a carport, abutting a recessed entrance porch that has one 6/6 double-hung window and one six-panel door. The remaining third has a pair of 6/6 double-hung windows. | | | |

United States Department of the Interior
National Park Service

National Register of Historic Places
Continuation Sheet

Section number 7 Page 21 - OAKS DISTRICT, HATTIESBURG, MISS.

- | Section number | Name | Style | CA. | NC |
|----------------|---|------------------|------|----|
| 85. | 710 CORINNE | RANCH | 1960 | NC |
| | Two modern concrete-block apartment buildings containing ten units. The shallow hip roof projects slightly at each recessed entry porch. Windows are sliding aluminum type, and entrances have protective glass and aluminum doors. | | | |
| 86. | 711 CORINNE | CRAFTSMAN | 1945 | NC |
| | One-story, wood-frame residence with intersecting gable roof. The house recesses slightly as it moves east. A carport on the west end has an independent shed roof. The westernmost portion of the house has a ribbon of two 6/6 and one 8/8 double-hung windows. The slightly projecting east portion has a pair of 6/6 double-hung windows. The entrance is off a small porch on the easternmost portion. On the northwest corner of the house is a garage. | | | |
| 87. | 804 CORINNE | CRAFTSMAN | 1940 | C |
| | One-story, wood-frame, square-massed residence with pyramidal roof and exposed rafter ends. The 6x12-foot screened entrance porch with six-panel front door is centered on the house and flanked by 4/1 double-hung windows. | | | |
| 88. | 807 CORINNE | COLONIAL REVIVAL | 1938 | C |
| | One-story, wood-frame bungalow, clad in asbestos shingles, oriented parallel to the street. The gable roof has boxed eaves and a cross gable over a small entrance porch supported by metal pilasters. The eight-panel front door is flanked by pairs of 6/6 double-hung windows. On the northeast corner of the house is a carport and workroom wing. | | | |
| 89. | 809 CORINNE | COLONIAL REVIVAL | 1928 | C |
| | Large, two-story, brick-veneer residence with hipped roof, deep boxed eaves, and two chimneys. Windows are 6/1 double hung, and the front door is well articulated with Corinthian engaged columns. On the northwest corner is a one-story wooden wing with open porch; on the northeast corner is an open porch, garage and utility room. | | | |
| 90. | 900 CORINNE | COLONIAL REVIVAL | 1938 | C |
| | One and a half story brick-veneer residence, oriented parallel to the street. The complex roof has many gables, one chimney, four dormers, and boxed eaves. The typical window is 8/8 double hung, and the Federal-style entrance has a recessed six-panel door. An eighteen-foot projection on the east end of the house has a bay window. On the rear of the house is a garage and small, open porch. [Photo 11 of 24] | | | |

United States Department of the Interior
National Park ServiceNational Register of Historic Places
Continuation SheetSection number 7 Page 22 - OAKS DISTRICT, HATTIESBURG, MISS.

-
- | 91. | 901 CORINNE | CRAFTSMAN | CA. 1922 | C |
|-----|---|------------------|----------|---|
| | <p>One-story, brick-veneer bungalow, oriented perpendicular to the street. The gable roof has exposed rafter ends and purlins, two chimneys, and a cross gable, and projects over the partial-width front porch, creating its own gable end. The porch is supported on brick columns. The front door has nine lights over two panels, and the typical window is 4/1 double hung. On both the east and west elevations are slightly projecting bays.</p> | | | |
| | <hr/> | | | |
| 92. | 903 CORINNE | CRAFTSMAN | CA. 1924 | C |
| | <p>One and a half story, well-detailed, wood-frame bungalow with main gable roof running parallel to the street with exposed rafter ends and purlins, two shed dormers, one chimney, and a cross gable forming an entrance porch. The ten-foot-deep porch is on the east end of the street facade, and is supported by very short, boxed columns set on tall masonry piers. The front door has four lights over four panels; the typical window is 4/1. A major addition was made to the house after 1961. [Photo 12 of 24]</p> | | | |
| | <hr/> | | | |
| 93. | 906/906-1/2 | COLONIAL REVIVAL | CA. 1940 | C |
| | <p>Two-story, symmetrically massed, wood-frame residence with gable roof with boxed eaves and ridge running parallel to the street. The two six-panel front doors are recessed in the center of the house and flanked by 8/8 double-hung windows on both floors and topped by a 6/6 double-hung window on the second. There is a carport on both east and west elevations.</p> | | | |
| | <hr/> | | | |
| 94. | 907 CORINNE | CRAFTSMAN | CA. 1923 | C |
| | <p>One-story, wood-frame bungalow, oriented perpendicular to the street. The main gable has exposed rafter ends, knee braces, one chimney, a cross gable, and extends forward over the partial-width front porch. The entrance porch is located on the east end of the street facade. The front door has four lights over four panels. The typical window is 4/1 double hung. On the west elevation is a very shallow, one-foot projection; to the rear is a small porch.</p> | | | |
| | <hr/> | | | |
| 95. | 908 CORINNE | CRAFTSMAN | CA. 1923 | C |
| | <p>One-story, wood-frame bungalow, oriented perpendicular to the street. The main gable roof has exposed rafter ends, knee braces, deep overhang, a cross gable forming an original carport, and extends forward to form a partial-width front porch supported by four tapered box columns. The louvered front door is flanked by asymmetrically placed pairs of 4/1 double-hung windows. The original full-width porch across the rear of the house has been replaced since 1961 by a large addition.</p> | | | |

United States Department of the Interior
National Park ServiceNational Register of Historic Places
Continuation SheetSection number 7 Page 23 - OAKS DISTRICT, HATTIESBURG, MISS.

-
- | | | | | |
|------|---|--------------------------------|-----------------|----------|
| 96. | 911 CORINNE | MEDITERRANEAN/CRAFTSMAN | CA. 1917 | C |
| | One-story, wood-frame residence, oriented perpendicular to the street. The hipped roof has one dormer, one chimney, and deep boxed eaves. The full-width, three-bay porch is screen enclosed and supported by boxed columns. Typical windows are 9/1 double hung, and the front door has four lights over six panels. The house has been modified in the rear. | | | |
| 97. | 912 CORINNE | COLONIAL REVIVAL | CA. 1940 | C |
| | One-story, wood-frame residence, oriented parallel to the street, with pilasters on the corners, and a gable roof with boxed eaves and a small cross gable forming an entrance porch. The entrance has fluted pilasters and an entablature, and a 3-light/7-panel door flanked by two 6/6 double-hung windows. | | | |
| 98. | 102 MAMIE | CRAFTSMAN | CA. 1922 | C |
| | One-story, wood-frame bungalow. The ridge of the shallow gable roof runs parallel to the street, with deep overhangs, two chimneys, and one shallow dormer. The full-width front porch has a pergola appearance and is supported by four Doric columns. It has been enlarged to the east and west since 1961 to form carports. The entrance is centered in the middle porch bay and is flanked by pairs of full-length windows. Down the west elevation is a twelve-foot-deep addition, added since 1961. | | | |
| 99. | 104 MAMIE | CRAFTSMAN | CA. 1923 | C |
| | One and a half story stucco bungalow, oriented perpendicular to the street. The steep gable roof has asbestos shingles, three chimneys, and a jerkin-head gable end. The full-width front porch has been enclosed. The typical original window is 6/1 double hung. There is a bay on the east and west elevations and on the rear, a wing on the east corner, and an open porch on the west. | | | |
| 100. | 105 MAMIE | MEDITERRANEAN/CRAFTSMAN | CA. 1917 | C |
| | One-story, wood-frame residence with hipped roof, deep boxed eaves, two chimneys and one dormer. The full-width, independently roofed front porch extends to the east, forming a carport added since 1961. This carport/porch is supported by boxed columns set on brick piers. The entrance is in the middle porch bay. Windows are both 21/1 and 16/1 double hung. On the as side is a 2' x 16' projecting bay. The rear of the house has been enlarged since 1961. Originally similar to 109 Mamie. | | | |

United States Department of the Interior
National Park Service

National Register of Historic Places
Continuation Sheet

Section number 7 Page 24 - OAKS DISTRICT, HATTIESBURG, MISS.

- | Section Number | Name | Style | CA. | Code |
|----------------|--|-------------------------|----------|------|
| 101. | 109 MAMIE | MEDITERRANEAN/CRAFTSMAN | CA. 1917 | C |
| | One-story, wood-frame residence, oriented perpendicular to the street. The hipped roof has deep, boxed overhangs, one chimney and one dormer. The full-width front porch is independently roofed and supported by boxed columns set on small brick piers. The entrance is located in the middle porch bay and flanked by a ribbon of three double-hung windows on each side. On the west elevation is a small, open porch. This house is very similar to 105 Mamie. [Photo 13 of 24] | | | |
| 102. | 200 MAMIE | RANCH | CA. 1952 | NC |
| | One-story, brick-veneer residence, irregularly massed, with the street facade dominated by a garage on the east, adjacent to the entrance. Windows are metal casement. | | | |
| 103. | 201 MAMIE | NO STYLE | CA. 1953 | NC |
| | Two-story, substantially altered, wood frame residence with shallow gable roof, one chimney and awning-type metal windows. | | | |
| 104. | 301 MAMIE | MISSION | CA. 1907 | C |
| | CAMP ELEMENTARY SCHOOL
Two-story stucco school building with hipped roof over the original portion, gable roofs behind the Mission parapets, and flat roofs on the one-story portion. [Photo 14 of 24] | | | |
| 105. | 304 MAMIE | CRAFTSMAN | CA. 1924 | C |
| | One-story, wood-frame bungalow clad in vinyl siding, oriented perpendicular to the street, with shallow gable roof, shed dormer, deep overhang, asphalt shingles, and enclosed original front porch. | | | |
| 106. | 305 MAMIE | MODERN | CA. 1962 | NC |
| | Contemporary church complex built on slab foundation with gabled and flat roofs, brick veneer, and aluminum windows. | | | |
| 107. | 306 MAMIE | CRAFTSMAN | CA. 1924 | C |
| | One-story, wood-frame bungalow, oriented perpendicular to the street. The gable roof has exposed decorative rafter ends, knee braces and asphalt shingles, and extends forward on the east side to cover the partial-width front porch, creating its own gable end. The porch is supported by squat wood columns set on brick piers. The front door has three lights over one panel, and flanking windows are 4/1 double hung. | | | |

United States Department of the Interior
National Park Service

National Register of Historic Places
Continuation Sheet

Section number 7 Page 25 - OAKS DISTRICT, HATTIESBURG, MISS.

- | Section number | Property Name | Style | Approx. Date | Condition |
|---|---------------|------------------|--------------|-----------|
| 108. | 315 MAMIE | TUDOR | CA. 1923 | C |
| One and a half story brick veneer bungalow, very picturesquely massed, and oriented perpendicular to the street, with a complex roof of multiple gables. The entrance porch is located in the center of the main mass; on the east are two porches and a carport. | | | | |
| 109. | 408 MAMIE | CRAFTSMAN | CA. 1928 | C |
| One-story, brick-veneer bungalow, oriented perpendicular to the street. The gable roof has one chimney, asbestos shingles, exposed purlins and boxed eaves, and projects forward to form an entrance porch on the southwest corner which wrapped down the west side but is now enclosed. The entrance has a Queen Anne type door and 3-light sidelights; the typical window is 6/1 double hung. | | | | |
| 110. | 409 MAMIE | TRADITIONAL | CA. 1964 | NC |
| One-story, brick-veneer residence, oriented parallel to the street. The shallow gable roof has boxed eaves, three dormers, and two chimneys. The semi-circular entrance porch is supported by Doric columns, and has an 8-panel door, fanlight transom, and decorative sidelights over one panel. Typical windows are 4/4 double hung. The west side of the house projects slightly; on the rear northeast corner is a carport. | | | | |
| 111. | 413 MAMIE | CRAFTSMAN | CA. 1945 | C |
| Symmetrically massed, one-story, wood-frame bungalow, clad in asbestos siding. The shallow gable roof has boxed eaves and a cross gable over an entrance porch supported by metal pilasters. The front door is flanked by pairs of 3/1 double-hung windows. | | | | |
| 112. | 414 MAMIE | COLONIAL REVIVAL | CA. 1926 | C |
| Large, two-story, wood-frame residence, oriented perpendicular to the street, with hip roof, recessed entrance, and varied, but typically 6/1 windows. The rear of the house has been substantially enlarged since 1961. | | | | |
| 113. | 415 MAMIE | CRAFTSMAN | CA. 1926 | C |
| One-story, wood-frame bungalow, clad in asbestos siding, oriented perpendicular to the street. The gable roof has two chimneys, exposed rafter ends, and asphalt shingles. The original partial-width front porch on the west end has been enclosed and enlarged to the east. A secondary entrance is on the west elevation. Original windows are 3/1 double hung. | | | | |
| 114. | 416 MAMIE | TRADITIONAL | CA. 1926 | NC |
| Two-story, wood frame, picturesquely massed residence, so remodeled that its original appearance is virtually obscured. Window types vary. | | | | |

United States Department of the Interior
National Park Service

National Register of Historic Places
Continuation Sheet

Section number 7 Page 26 - OAKS DISTRICT, HATTIESBURG, MISS.

- | Section number | Name | Style | CA. | Code |
|----------------|---|------------------|----------|------|
| 115. | 500 MAMIE | COLONIAL REVIVAL | CA. 1936 | C |
| | One-story, brick-veneer residence, simply massed, with shallow gable roof which extends to form a full-width, three-bay front porch. The 9-light/4-panel front door is centrally located and flanked by pairs of 6/6 double-hung windows. A former breezeway connecting the rear of the house to a back building has been enclosed. | | | |
| 116. | 501 MAMIE | CRAFTSMAN | CA. 1924 | C |
| | One-story, wood-frame bungalow, oriented perpendicular to the street. The gabled roof has exposed rafter ends, knee braces, and asphalt shingles. The nearly full-width front porch is independently roofed, supported by metal pilasters. Opening onto the porch are two 4/1 double-hung windows and two 4-light/3-panel doors. There is a 2' x 20' projection on the east elevation, and a rear porch that has been enclosed. | | | |
| 117. | 503 MAMIE | CRAFTSMAN | CA. 1926 | C |
| | One-story, stuccoed bungalow with multiple gable roofs with jerkin-head ends, exposed rafter ends, and one chimney. Windows are 4/1 and 6/1 double hung. A carport has been added on the east side since 1961, and the porch on the west side that originally wrapped the southwest corner has been remodeled. The rear of the house has also been substantially remodeled. | | | |
| 118. | 504 MAMIE | RANCH | CA. 1950 | NC |
| | One-story, brick-veneer residence, symmetrically massed, oriented perpendicular to the street. The gable roof has boxed eaves and a cross gable forming an entrance porch supported by cast-iron pilasters. Windows are 8/12 double hung, and the front door has two lights and four panels. | | | |
| 119. | 506 MAMIE | TRADITIONAL | CA. 1965 | NC |
| | One-story slab house with gable roof and a cross gable over the entrance porch. Openings vary greatly. | | | |
| 120. | 507 MAMIE | CRAFTSMAN | CA. 1919 | C |
| | One-story, wood-frame bungalow, oriented perpendicular to the street. The gable roof has exposed rafter ends and knee braces, and extends on the southwest corner to form an entrance porch that is supported by masonry piers. The typical window is 9/1 double hung, and the front door has nine lights. | | | |
| 121. | 508 MAMIE | COLONIAL REVIVAL | CA. 1938 | C |
| | One-story, wood-frame residence with gable roof, asbestos shingles, and one chimney. The entrance porch has a flat roof and cast-iron pilasters. On the east elevation, a former porch has been enclosed; on the west elevation is a carport. Typical windows are 6/6 double hung, and the front door has six panels. | | | |

United States Department of the Interior
National Park ServiceNational Register of Historic Places
Continuation SheetSection number 7 Page 27 - OAKS DISTRICT, HATTIESBURG, MISS.

-
- | | | | | |
|------|--|-------------------------|-----------------|-----------|
| 122. | 511 MAMIE | COLONIAL REVIVAL | CA. 1938 | C |
| | Two-story, brick-veneer residence with gable roof, two-story front porch, an enclosed one-story porch on the west elevation, and a one-story wood-frame wing on the east elevation. The Federal-style front door is flanked by 6/6 double-hung windows, which are repeated on the second floor. | | | |
| 123. | 512 MAMIE | COLONIAL REVIVAL | CA. 1940 | C |
| | One-story, wood-frame Cape Cod residence, oriented parallel to the street and clad in vinyl siding. The gable roof has two dormers, boxed eaves, and a small cross gable forming an entrance porch. The front door has six panels, and windows are 8/8 double hung. | | | |
| 124. | 515 MAMIE | COLONIAL REVIVAL | CA. 1919 | C |
| | Two-story, wood-frame residence with one-story sides added between 1931 and 1961, and independent gable roofs over the various portions of the house. The flat-roofed entrance porch is supported by cast-iron pilasters. Windows are 6/6 double hung, and the door has six panels. | | | |
| 125. | 600 MAMIE | CRAFTSMAN | CA. 1923 | C |
| | One-story, wood-frame bungalow, oriented perpendicular to the street, and clad in asbestos siding. The gable roof has exposed rafter ends and asphalt shingles, and extends on the west side to form an entrance porch supported by metal pilasters. The front door has six panels. The street front has obviously been remodeled with the elevation of all windows. | | | |
| 126. | 602 MAMIE | CRAFTSMAN | CA. 1923 | C |
| | One-story, wood-frame bungalow, oriented perpendicular to the street and partially covered with asbestos shingles. The gable roof has exposed rafter ends and knee braces, and extends on the east end to form an entrance porch supported by wood columns set on masonry piers. On the east side, a carport has been added. | | | |
| 127. | 603 MAMIE | RANCH | CA. 1948 | NC |
| | One-story, brick-veneer residence, oriented parallel to the street. The shallow gable roof has boxed eaves and asbestos shingles. The slightly recessed front door has six panels; windows are varied. | | | |
| 128. | 604 MAMIE | RANCH | CA. 1948 | NC |
| | One-story, brick-veneer, slab house with gable roof and boxed eaves. The undercut entrance porch on the northeast corner has a flush door with one light, and a Chicago-style window. On the west elevation is a carport. | | | |

United States Department of the Interior
National Park Service

National Register of Historic Places
Continuation Sheet

Section number 7 Page 28 - OAKS DISTRICT, HATTIESBURG, MISS.

- | Section number | Address | Style | CA. | Code |
|----------------|--|-----------|----------|------|
| 129. | 606 MAMIE | CRAFTSMAN | CA. 1924 | C |
| | One-story, wood-frame bungalow, oriented perpendicular to the street. The shallow gable roof has one chimney, exposed rafter ends and knee braces. The entrance porch on the east side of the street elevation is independently roofed and supported by cast-iron pilasters. The typical window is 4/1 double hung. On the east side of the house, a carport and rear addition have been added since 1961. | | | |
| 130. | 608 MAMIE | RANCH | CA. 1953 | NC |
| | One-story, brick veneer slab house, oriented parallel to the street. The gable roof has boxed eaves and a cross gable over an entrance porch and one in the rear. The typical window is 6/6 double hung, and the front door has six panels. On the rear of the house is a carport. | | | |
| 131. | 610 MAMIE | CRAFTSMAN | CA. 1946 | C |
| | One-story, brick veneer residence, oriented parallel to the street. The shallow gable has two street-facing cross gables and is undercut on the northwest corner to form a porch. The front door has six panels, and windows are 2/2 double hung. | | | |
| 132. | 700 MAMIE | CRAFTSMAN | CA. 1923 | C |
| | One-story, brick-veneer bungalow, oriented perpendicular to the street, with complex roof, jerkin-head gable ends, exposed rafter ends, one chimney, and 4/1 windows. | | | |
| 133. | 702 MAMIE | CRAFTSMAN | CA. 1926 | C |
| | One-story, wood-frame bungalow, oriented perpendicular to the street, with gable roof, jerkin-head ends, exposed rafters, knee braces, one chimney, squat box columns set on brick piers, 4/1 double-hung windows, and 8-light/3-panel door. | | | |
| 134. | 704 MAMIE | CRAFTSMAN | CA. 1923 | C |
| | One-story, wood-frame bungalow, oriented parallel to the street, with gable roof, deep overhangs, knee braces, one chimney, 4/1 double-hung windows, 6-panel door, and a full-width front porch supported by metal pilasters. | | | |
| 135. | 705 MAMIE | CRAFTSMAN | CA. 1926 | C |
| | One-story, wood-frame bungalow with gable roof, exposed rafter ends and knee braces, a partial-width front porch supported by boxed columns set on small brick piers, 4/1 double-hung windows, and single light in flush wood door. | | | |

United States Department of the Interior
National Park ServiceNational Register of Historic Places
Continuation SheetSection number 7 Page 29 - OAKS DISTRICT, HATTIESBURG, MISS.

-
- | | | | | |
|------|--|-------------------|-----------------|----------|
| 136. | 613 W. PINE | CRAFTSMAN | CA. 1919 | C |
| | One-story, wood-frame residence, oriented perpendicular to the street. The gable roof has two chimneys, one dormer, knee braces, exposed rafter ends, and deep overhangs. The full-width front porch has a flat roof, supported by boxed columns set on masonry piers. The centrally located front door is flanked by tripartite windows of 6/1 and 12/1, double hung. The front door has an eight-light transom. There is a shallow one-foot-deep projection on each side of the house. [Photo 15 of 24] | | | |
| 137. | 615 W. PINE | CRAFTSMAN | CA. 1919 | C |
| | One-story, wood-frame bungalow, clad in asbestos siding and oriented perpendicular to the street. The gabled roof has exposed rafter ends, knee braces and a rear cross gable. The undercut, full-width front porch has stucco in the gable end and is supported by brick and wood columns. Double entrances, indicating this may have been a double, have 6/1 double-hung sidelights, 10-light doors, and 6-light transoms. On the west elevation is a small 1x3 foot projection and a larger, non-original 7x32 foot projection. | | | |
| 138. | 701 W. PINE | CRAFTSMAN | CA. 1913 | C |
| | One-story, wood-frame residence with large roof, one chimney, one dormer, and deep, boxed eaves. The full-width front porch is independently roofed and supported by paired boxed columns, between which span wood railings. The complex entrance is centered on the building mass and flanked by 12/1 double-hung windows. On the west elevation is a shallow projection, and on the east is a larger 8x27-foot projection. Screened porches are on the southeast corner and rear. [Photo 16 of 24] | | | |
| 139. | 702 W. PINE | SPANISH | CA. 1927 | C |
| | One-story, irregularly massed, stucco bungalow with dominating roof with clipped eaves and one chimney. The original open-air front porch has been enclosed. On the rear is an open porch and small projecting wing. | | | |
| 140. | 704 W. PINE | QUEEN ANNE | CA. 1910 | C |
| | Two-story, wood-frame residence with pyramidal roof with multiple cross gables. The one-story wraparound porch is supported by boxed wood columns. The entrance has 3-light/1-panel sidelights, a single-light transom, and a 1-light/1-panel door. The rear appears to have been slightly enlarged before 1931. | | | |

United States Department of the Interior
National Park ServiceNational Register of Historic Places
Continuation SheetSection number 7 Page 30 - OAKS DISTRICT, HATTIESBURG, MISS.

-
- | | | | | |
|------|---|--------------------------------|-----------------|----------|
| 141. | 705 W. PINE | MEDITERRANEAN/CRAFTSMAN | CA. 1911 | C |
| | One-story, wood-frame bungalow, oriented perpendicular to the street. The complex roof has one dormer and deep, boxed eaves with shallow brackets. The partial-width entrance porch is independently roofed and supported by Tuscan columns. The typical 2/2 double-hung window is grouped in threes on the street facade. Between 1915 and 1925 the front porch wrapped the east front corner and formed a carport, which appears on insurance maps through 1961; the present carport at the east rear appears to have been added after that date. | | | |
| 142. | 706 W. PINE | QUEEN ANNE | CA. 1912 | C |
| | One-story, wood-frame cottage with picturesque roof, boxed eaves, decorative cut-out in the street-facing gable, and partial-width, independently roofed, originally wraparound porch, enclosed on the side. The present Craftsman-style brick columns are not original. Windows vary. | | | |
| 143. | 710 W. PINE | QUEEN ANNE | CA. 1908 | C |
| | One-story, wood-frame house with steep, complex roof, boxed eaves, and decorative cut-out in the gable. The wraparound porch with independent roof does not appear to be original, but an attempt to modernize the house, possibly in the late 1920s when the rear of the house was substantially enlarged, as evidenced by the 1931 Sanborn map. The wraparound porch has subsequently been enclosed on the east side. | | | |
| 144. | 714 W. PINE | COLONIAL REVIVAL | CA. 1923 | C |
| | Two-story, wood frame residence with shallow gable roof, three dormers, one chimney, and boxed eaves. The well-hidden facade appears to be symmetrically arranged. The six-panel entrance door has sidelights, and windows are 8/1 double hung. On the west elevation is a one-story projection, and to the rear are two open porches. A large, two-story apartment building was built in the rear in 1972. | | | |
| 145. | 801 W. PINE | COLONIAL REVIVAL | CA. 1906 | C |
| | Large, impressive, two-story, wood frame residence with massive roof, two dormers, one chimney, and deep boxed eaves. Windows vary, but 6/1 double-hung appears to be most common. There is a partial-width porch on the west corner; on the east elevation, the house projects out twelve feet. [Photo 17 of 24] | | | |
| 146. | 802 W. PINE | MEDITERRANEAN/CRAFTSMAN | CA. 1913 | C |
| | One and a half story, brick-veneer residence, oriented perpendicular to the street. The dominating roof has two large dormers and two chimneys. Windows are typically 4/1 double hung. A large, full-width front porch extends to the west, forming a carport. The porch on the east side has been enclosed. A four-foot-deep projection is on each side of the house. [Photo 18 of 24] | | | |

United States Department of the Interior
National Park Service

National Register of Historic Places
Continuation Sheet

Section number 7 Page 31 - OAKS DISTRICT, HATTIESBURG, MISS.

- | | | | | |
|------|---|--------------------------------|-----------------|-----------|
| 147. | 804 W. PINE | QUEEN ANNE | CA. 1902 | NC |
| | One-story, wood-frame residence, clad in asbestos siding. The large hipped roof has a cross half-hip and boxed eaves. The original front porch which abutted the west projection has been unsympathetically enclosed. Doors and windows are obscured by iron security bars. | | | |
| 148. | 805 W. PINE | CRAFTSMAN | CA. 1920 | NC |
| | One-story, brick-veneered structure, oriented perpendicular to the street, with steep gable roof, aluminum replacement windows, and two six-panel entrance doors. The false half-timbering in the gable ends is one of the few original architectural details to survive a recent major renovation. | | | |
| 149. | 806 W. PINE | QUEEN ANNE | CA. 1906 | NC |
| | One-story, wood-frame residence, now stuccoed, oriented perpendicular to the street. The steep pyramidal roof has lost its widow's walk, but retains its two original cross gables. The full-width front porch extends to form a carport on the east. The typical window is 1/1 double hung, and the replacement flush wood door has three small lights set on a diagonal. The house also has been enlarged to the rear. | | | |
| 150. | 807 W. PINE | CRAFTSMAN | CA. 1911 | C |
| | One-story, wood-frame bungalow, oriented perpendicular to the street, which appears to have been altered since it appeared on the 1915 Sanborn map--most notably by the enclosure of the southeast corner porch. The typical window is 9/1 double hung. The complex roof has exposed purlins. This is possibly an earlier house, remodeled. | | | |
| 151. | 808 W. PINE | MEDITERRANEAN/CRAFTSMAN | CA. 1904 | C |
| | One-story, wood-frame residence, oriented perpendicular to the street, with hipped roof, boxed eaves, and one dormer. The full-width front porch is independently roofed, supported on four boxed columns. Windows are replacement aluminum, and doors replacement flush wood. An original full-width porch across the rear was enclosed between 1925 and 1931. The house was again modified and enlarged to the rear after 1961. | | | |
| 152. | 810 W. PINE | QUEEN ANNE/CRAFTSMAN | CA. 1908 | C |
| | One-story, wood-frame residence, clad in asbestos siding, oriented perpendicular to the street. The steep gable roof over the front porch appears to be a remodeling. The street-facing gable end has three eight-light casement sash. Porch columns are brick. Windows are varied. | | | |

United States Department of the Interior
National Park Service

National Register of Historic Places
Continuation Sheet

Section number 7 Page 32 - OAKS DISTRICT, HATTIESBURG, MISS.

- | Section number | Address | Style | CA. | Code |
|----------------|--|-------------------------|----------|------|
| 153. | 813 W. PINE | QUEEN ANNE | CA. 1912 | C |
| | One and a half story wood frame residence that projects forward on the southwest corner, which abuts a porch that has been enclosed which once wrapped around the southeast corner. A large dormer has been added to the house. The typical window is 6/6 double hung. The entrance has multiple lights, sidelights, and a transom surrounding the door. | | | |
| 154. | 814 W. PINE | TRADITIONAL | CA. 1979 | NC |
| | One-story, brick-veneer commercial building with U-shaped plan and partial-width front porch. The gable roof has boxed eaves, and a cross gable over the front porch supported on four wood columns. The typical window is 9/9 double hung. The door has six panels. | | | |
| 155. | 815 W. PINE | NO STYLE | CA. 1972 | NC |
| | Two-story, brick-veneer apartment building with shallow gable roof and boxed eaves. Windows are very small, aluminum sliding type. Across the front and rear is a very narrow balcony. | | | |
| 156. | 902 W. PINE | MEDITERRANEAN/CRAFTSMAN | CA. 1923 | C |
| | One-story, wood-frame bungalow, oriented perpendicular to the street. The large hip roof has rear cross hips, two chimneys, and boxed eaves. The full-width, independently roofed front porch is supported by paired boxed columns set on brick piers. On the east elevation is a 4' x 16' projection. On the west elevation, about fourteen feet back from the porch, the house projects out four feet. | | | |
| 157. | 904 W. PINE | CRAFTSMAN | CA. 1930 | C |
| | One-story, brick-veneer bungalow, oriented perpendicular to the street. The partial-width front porch is supported by brick columns and extends to the east to form a carport. The typical window is 3/1 double hung, and the front door has three lights. In the southeast corner is a garage, and on the east elevation is a recessed, open porch. [Photo 19 of 24] | | | |
| 158. | 909-913 W. PINE | NORMAN | CA. 1967 | NC |
| | Four brick and half-timber apartment buildings. The aluminum windows have a diamond pattern. Some of the gable roofs have cross gables. | | | |
| 159. | 912 W. PINE | QUEEN ANNE/CRAFTSMAN | CA. 1910 | NC |
| | One-story, brick veneer residence, oriented perpendicular to the street. The shallow roof is complex, with one chimney. The entrance porch abuts a northwest projection. On the west elevation is a small, 3' x 18' bay. Windows are replacement aluminum. | | | |

United States Department of the Interior
National Park ServiceNational Register of Historic Places
Continuation SheetSection number 7 Page 33 - OAKS DISTRICT, HATTIESBURG, MISS.

-
- | | | | | |
|------|---|-------------------|-----------------|-----------|
| 160. | 914 W. PINE | CRAFTSMAN | CA. 1923 | C |
| | One-story, "ideal-wall" bungalow, oriented perpendicular to the street. The roof has multiple gables, exposed rafter ends and purlins, and deep overhangs. The entrance is on the northwest corner. Windows have been replaced with aluminum sash, and the house has been enlarged towards the rear. | | | |
| 161. | 915 W. PINE | QUEEN ANNE | CA. 1902 | C |
| | One-story, wood-frame cottage with steep, pyramidal roof and two cross gables, two chimneys, boxed eaves, asbestos shingles, and full-width front porch supported by wood columns set on brick piers. | | | |
| 162. | 1001 W. PINE | CRAFTSMAN | CA. 1917 | NC |
| | One-story, wood-frame bungalow, clad in asbestos siding, with hip roof and cross gable over an enclosed entrance porch on the southeast corner. The typical original window is 9/1 double hung. The front door is a replacement. | | | |
| 163. | 1002 W. PINE | MISSION | CA. 1929 | C |
| | Impressive brick-veneer residence with a general U-shaped plan. The tiled roof has boxed eaves and two "Mission" parapets. There is an open porch between the two street-projecting wings. Windows are shaded by aluminum awnings. [Photo 20 of 24] | | | |
| 164. | 1003 W. PINE | CRAFTSMAN | CA. 1917 | C |
| | One-story, wood-frame bungalow, clad in asbestos siding, oriented perpendicular to the street. The full-width, three-bay front porch is undercut from the main roof and supported by two masonry and two wood columns. The entrance is located in the center bay, and is flanked by a pair of 9/1 double-hung windows. | | | |
| 165. | 1007 W. PINE | CRAFTSMAN | CA. 1922 | C |
| | One-story, brick-veneer bungalow, oriented perpendicular to the street. The gable roof has exposed rafter ends, knee braces, asbestos shingles, one chimney, and a cross gable over a partial-width front porch supported by boxed columns set on masonry piers. The centrally located front door has eight lights, and is flanked on each side by a ribbon of three 4/1 double hung windows. | | | |
| 166. | 104 PINEHURST | CRAFTSMAN | CA. 1941 | C |
| | One-story, brick-veneer residence, oriented perpendicular to the street. The bricks are laid in a decorative pattern around all openings. The steep gable roof has a Cotswold cottage cross gable over the southeastern slight projection and small entrance porch, one dormer, one chimney, and boxed eaves. On the northeast corner is an enclosed former porch; on the south elevation is a shallow, two-foot-deep projection. | | | |

United States Department of the Interior
National Park Service

National Register of Historic Places
Continuation Sheet

Section number 7 Page 34 - OAKS DISTRICT, HATTIESBURG, MISS.

- | Section number | Name | Style | CA. | Code |
|----------------|--|------------------|----------|------|
| 167. | 105 PINEHURST | COLONIAL REVIVAL | CA. 1936 | C |
| | One-story, wood-frame residence, oriented perpendicular to the street. The steep gable roof extends to form a carport on the north side of the house. The typical windows is 6/6 double hung, and the front door has two lights over four panels. | | | |
| 168. | 107 PINEHURST | CRAFTSMAN | CA. 1926 | C |
| | One-story, wood-frame bungalow with gable roof, exposed rafter ends, knee braces, and cross gable over a partial-width front porch. On the south side of the house is a carport. The centrally located six-panel front door is flanked by pairs of 6/6 double-hung windows. | | | |
| 169. | 109 PINEHURST | TRADITIONAL | CA. 1985 | NC |
| | One-story, wood-frame residence with gable roof, boxed eaves, entrance porch supported by turned wood posts, six-panel front door, and sixteen-light windows. | | | |
| 170. | 110 PINEHURST | COLONIAL REVIVAL | CA. 1927 | C |
| | Impressive, two-story, brick-veneer residence with large, tiled roof, boxed eaves, and two dormers. The two-story portico is supported on colossal Corinthian columns. The entrance has sidelights of two lights over one panel, a fanlight transom, and a six-panel door. The typical window is 6/6 double hung and symmetrically placed on the facade. There is a full-width tile terrace across the street facade, a one-story wing, an open porch, and a carport on the south elevation, and a ten-foot projection on the north.
[Photo 21 of 24] | | | |
| 171. | 110-1/2 PINEHURST | COLONIAL REVIVAL | CA. 1927 | C |
| | One and a half story carriage house to 110 Pinehurst, with steep gable roof, boxed eaves, two-bay entrance porch, 6/6 double-hung windows, and six-panel door. | | | |
| 172. | 111 PINEHURST | NO STYLE | CA. 1930 | C |
| | One-story, wood-frame residence with a reworked, wraparound porch on the southwest corner, supported by boxed columns and independently roofed and missing its deck. To the north of the porch is a large replacement window; typical original windows are 4/1 double hung. On the north side of the house is a carport. | | | |
| 173. | 113 PINEHURST | COLONIAL REVIVAL | CA. 1945 | NC |
| | One-story, wood-frame residence, clad in asbestos siding and oriented parallel to the street. The gable roof extends slightly over the entrance stoop for protection. The front door is flanked by pairs of 6/6 double-hung windows. The north-end wing has been remodeled. | | | |

United States Department of the Interior
National Park Service

National Register of Historic Places
Continuation Sheet

Section number 7 Page 35 - OAKS DISTRICT, HATTIESBURG, MISS.

- | | | | | |
|------|---|------------------|----------|----|
| 174. | 115 PINEHURST | CRAFTSMAN | CA. 1923 | C |
| | One-story, wood-frame residence, oriented perpendicular to the street, with gable roof, exposed rafter ends and knee braces, partial-width, enclosed front porch, and enclosed rear porch. | | | |
| 175. | 108 THOMPSON | COLONIAL REVIVAL | CA. 1942 | C |
| | One-story, wood-frame residence, irregularly planned and oriented parallel to the street. The undercut entrance porch is supported by simple boxed columns. Windows vary greatly; the front door has nine lights over two panels. A carport is on the north end of the house. | | | |
| 176. | 200 THOMPSON | QUEEN ANNE | CA. 1910 | C |
| | One-story, wood-frame cottage with steep pyramidal roof and cross gable over a northeast projection. The independently roofed front porch abuts the northwest projection, and is likely a replacement from the 1920s; the vertical siding under the porch also indicates a remodeling. There was likely a window adjacent to the door. The sliding aluminum window in the northeast projection is non-original. | | | |
| 177. | 202 THOMPSON | QUEEN ANNE | CA. 1910 | C |
| | One-story, wood-frame cottage, clad in asbestos siding, oriented perpendicular to the street. The shallow pyramidal roof has boxed eaves and a cross half hip over a northeast projection. The independently roofed front porch abuts the northwest projection. The front door has six lights over three panels and a single-light transom; windows are 1/1 double hung. On the rear is an open porch, and on the north elevation is a carport. | | | |
| 178. | 204 THOMPSON | CRAFTSMAN | CA. 1930 | C |
| | One-story, wood-frame bungalow, clad in vinyl siding and oriented perpendicular to the street. The shallow gable roof likely had exposed rafter ends, but they are now covered with a vinyl soffit. There is a partial-width front porch on the northeast corner. The typical window is 4/1 double hung, and the door has four lights and four panels. | | | |
| 179. | 204-1/2 THOMPSON | CRAFTSMAN | CA. 1987 | NC |
| | One-story, concrete-block structure with shallow gable roof, 2/2 aluminum double-hung windows, and 3-light/3-panel door. | | | |
| 180. | 104 3RD AVENUE | CRAFTSMAN | CA. 1926 | C |
| | One-story bungalow, symmetrically arranged perpendicular to the street, with knee braces, gable-end attic vent, and a full-width porch undercut from the main roof, supported by boxed columns set on stucco piers. | | | |

United States Department of the Interior
National Park ServiceNational Register of Historic Places
Continuation SheetSection number 7 Page 36 - OAKS DISTRICT, HATTIESBURG, MISS.

-
- | | | | | |
|------|---|--------------------------------|-----------------|----------|
| 181. | 207 3RD AVENUE | MEDITERRANEAN/CRAFTSMAN | CA. 1907 | C |
| | One-story, wood-frame house with hip roof, boxed eaves, and one large dormer. The full-width, three-bay front porch is independently roofed and supported by boxed tapered columns. The typical window is 1/1 double hung, and the flush wood door has a single light. | | | |
| 182. | 208 3RD AVENUE | MEDITERRANEAN/CRAFTSMAN | CA. 1914 | C |
| | One-story, wood-frame residence with hip roof with multiple half hips, one chimney, one dormer, and very deep overhangs with shallow brackets. The full-width front porch is independently roofed and partially screen enclosed. There is a projection on the east and west elevations. The typical window is 1/1 double hung; the front door has a single light over three panels. | | | |
| 183. | 210 3RD AVENUE | MEDITERRANEAN/CRAFTSMAN | CA. 1913 | C |
| | One-story, wood-frame residence, oriented perpendicular to the street. The hip roof has one dormer, one chimney and deep boxed eaves. The entrance has an eight-light transom and 28-light/3-panel door. The typical window is 9/1 double hung. A carport has been added at the east end of the three-bay, full-width, independently roofed front porch. A small projection on the east elevation has been lost. | | | |
| 184. | 212 3RD AVENUE | CRAFTSMAN | CA. 1926 | C |
| | One-story, stuccoed residence with very shallow roof, exposed rafter ends, two chimneys, knee braces, and a three-bay front porch abutting a northwest projection. The typical window is 4/1 double hung. There is a projection to the east and one to the rear. | | | |
| 185. | 302 3RD AVENUE | MEDITERRANEAN/CRAFTSMAN | CA. 1914 | C |
| | One-story, wood-frame bungalow with hipped roof, boxed eaves, large dormer, and one chimney. The typical window is 24/1 double hung; the front door has six panels and a fanlight transom. A porch originally extended across the entire street facade and down the east elevation; now there is a small entrance porch with a flat roof, and on the east side, the original porch appears to have been enclosed. On the rear, an open porch connects the house with a back building. | | | |
| 186. | 306 3RD AVENUE | MEDITERRANEAN/CRAFTSMAN | CA. 1914 | C |
| | One-story, wood-frame residence, oriented perpendicular to the street. The hipped roof has a large dormer, one chimney, boxed eaves, and shallow brackets. The full-width, four-bay front porch extends to the east to form a carport. The entrance has a 7-light transom, 5-light sidelights, and 4-light/four-panel door. Windows are typically 12/1 double hung. | | | |

United States Department of the Interior
National Park ServiceNational Register of Historic Places
Continuation SheetSection number 7 Page 37 - OAKS DISTRICT, HATTIESBURG, MISS.

-
- | | | | | |
|------|---|--------------------------------|-----------------|----------|
| 187. | 307 3RD AVENUE | COLONIAL REVIVAL | CA. 1940 | C |
| | Small, one-story, wood-frame residence with gable roof, exposed rafter ends, 6/6 double-hung windows, and a 9-light/2-panel door. | | | |
| 188. | 308 3RD AVENUE | CRAFTSMAN | CA. 1914 | C |
| | One-story, wood-frame bungalow, oriented perpendicular to the street. The hipped roof has a gable on the hip over the original front porch, which is now enclosed. On the west elevation is a 3' x 14' projection. The rear of the house has been extensively enlarged. | | | |
| 189. | 312 3RD AVENUE | MEDITERRANEAN/CRAFTSMAN | CA. 1914 | C |
| | One-story, wood-frame bungalow with massive hip roof, boxed eaves, one dormer, two chimneys, and cross half hips in the rear. The full-width, three-bay front porch is supported by brick piers and has a balustrade. The typical window is 30/1 double hung. The front door has ten lights over four panels. Additions and alterations have been made to both sides and the rear of the house. | | | |
| 190. | 314 3RD AVENUE | MEDITERRANEAN/CRAFTSMAN | CA. 1912 | C |
| | One-story, wood-frame bungalow, oriented perpendicular to the street, with a complex roof line, boxed eaves and shallow brackets. The full-width front porch is screen enclosed. Sanborn maps indicate changes to all four elevations of the house. Windows are 15/1 double hung. The entrance has a 12-light transom and 3-panel door with glass tiles. | | | |
| 191. | 400 3RD AVENUE | CRAFTSMAN | CA. 1940 | C |
| | One-story, wood-frame bungalow, clad in asbestos siding, with gable roof with a cross gable over the entrance porch. Windows are 6/6 double hung, and the front door has six lights over a single panel. | | | |
| 192. | 204 4TH AVENUE | QUEEN ANNE | CA. 1904 | C |
| | Two-story, wood-frame residence with picturesque roof line, boxed eaves, asbestos shingles, and one chimney. Windows vary, but tend to be 1/1 double hung. The entrance does not appear original; it has a 9-light transom, 10-light sidelights, and a 15-light door. The full-width front porch is independently roofed, with a gable over the entrance bay, and is supported by Tuscan columns set on a wood base. The house has been enlarged to the rear and a garage attached. | | | |

United States Department of the Interior
National Park ServiceNational Register of Historic Places
Continuation SheetSection number 7 Page 38 - OAKS DISTRICT, HATTIESBURG, MISS.

-
193. **205 4TH AVENUE** **COLONIAL REVIVAL** **CA. 1908** **C**
One-story, wood-frame residence with steep roof, two dormers, and one chimney. The symmetrical facade appears to have been reworked during the 1930s. The independently roofed, full-width front porch is supported by octagonal columns and has a balustrade. The original porch wrapped down both sides of the house, but it was removed and additions made to both sides after 1961. The typical window is 1/2 double hung. The entrance door has a fanlight transom, 10-light sidelights, and a 15-light door.
194. **206 4TH AVENUE** **CRAFTSMAN** **CA. 1919** **C**
One-story, wood-frame bungalow, clad in asbestos siding. The gable roof has exposed rafter ends, knee braces, and one chimney, and extends over the northwest projection, forming its own gable end. This projection was originally an open porch, but is now mostly enclosed. The typical window is 1/1 double hung, and the front door has six panels. On the west elevation is a shallow projection. On the rear, the house has been enlarged with a 14x16-foot wing.
195. **208 4TH AVENUE** **QUEEN ANNE** **CA. 1900** **C**
Two-story, wood-frame residence with steep hip roof, two street-facing crass gables, and boxed eaves. The typical window is 1/1 double hung, with blinds. The one-story wraparound porch is supported on Ionic columns. The one-story enclosed wraparound is an addition. [Photo 22 of 24]
196. **301 4TH AVENUE** **CRAFTSMAN** **CA. 1924** **C**
One-story, masonry bungalow with multiple gable roof, exposed rafter ends, knee braces, and stucco in the gable ends. A continuous open porch that originally wrapped the French and Corinne street elevations is presently cut up and enclosed on the Corinne Street side. The typical window is 6/6 double hung.
197. **302 4TH AVENUE** **QUEEN ANNE** **CA. 1908** **C**
Two-story, wood frame residence that originally had a one-story porch that wrapped down the east elevation to the slight three-foot projection. This porch has been enclosed and carried down the entire east side, across the rear and up the west side, and a large addition was made to the rear of the house in 1977. A carport has also been added on the east elevation. The typical window is 1/1 double hung. The entrance has sidelights, a transom and an oval-light door.

United States Department of the Interior
National Park Service

National Register of Historic Places
Continuation Sheet

Section number 7 Page 39 - OAKS DISTRICT, HATTIESBURG, MISS.

- | 198. | 306 4TH AVENUE | TRADITIONAL | CA. 1908 | NC |
|------|--|-------------|----------|----|
| | Two-story, brick-veneer house with full-width front porch with brick columns on the first floor and cast-iron pilasters on the second. Ten-light/two-panel french doors open onto the porch on both floors. The entrance is a pair of six-panel doors. | | | |
| 199. | 307 4TH AVENUE | CRAFTSMAN | CA. 1914 | C |
| | One-story, wood-frame bungalow with hipped roof, boxed eaves, one chimney, and one dormer. The full-width front porch is independently roofed, and originally wrapped the southeast corner. The porch, supported on brick columns, has been enclosed on the east side. The entrance is flanked by a ribbon of three windows--two 8/1 double hung, and one 20/1 double hung. There is a shallow, one-foot projection on the left side of the house, and a carport on the east elevation. | | | |
| 200. | 308 4TH AVENUE | CRAFTSMAN | CA. 1914 | NC |
| | One-story, brick-veneer, severely altered bungalow, oriented perpendicular to the street, with boxed eaves and one dormer. The full-width, three-bay front porch is independently roofed and set on brick columns. Windows vary greatly. | | | |
| 201. | 309 4TH AVENUE | CRAFTSMAN | CA. 1914 | C |
| | One-story, wood-frame bungalow with brick veneer on the sides and rear. The complex roof has boxed eaves, one dormer and two chimneys. The full-width front porch, supported on tapered box columns, once wrapped down the east side, but is now enclosed. The typical window is 1/1 double hung, and the entrance door has fifteen lights. On the west elevation is a shallow, one-foot projection; on the east side, the house was enlarged between 1925 and 1931, and a carport recently added. | | | |
| 202. | 310 4TH AVENUE | CRAFTSMAN | CA. 1914 | C |
| | One-story, wood-frame residence with steep gable roof and full-width front porch supported by boxed columns set on brick piers. The typical window is 12/1 double hung. The entrance has a 10-light door and 4-light transom. The house was enlarged to the rear between 1925 and 1931, and between 1931 and 1985 it was enlarged again to the rear and towards the east. | | | |
| 203. | 311 4TH AVENUE | CRAFTSMAN | CA. 1914 | C |
| | One-story, wood-frame residence with nearly full-width front porch. The typical window is 1/1 double hung, and the front door has fifteen lights. On the west side is a 4x14-foot projection with an additional six-foot-deep open porch. On the east side is a nine-foot offset which has been enlarged since 1961. The rear of the house has also been enlarged. | | | |

United States Department of the Interior
National Park ServiceNational Register of Historic Places
Continuation SheetSection number 7 Page 40 - OAKS DISTRICT, HATTIESBURG, MISS.

-
- | | | | | |
|------|--|----------------------|-----------------|-----------|
| 204. | 312 4TH AVENUE | CRAFTSMAN | CA. 1914 | C |
| | One and a half story, wood-frame bungalow, oriented perpendicular to the street. The steep gable roof has two chimneys, exposed rafter ends, and knee braces. The partial-width front porch is screen enclosed and has aluminum awnings. There are small projections on the east and west of the house, and a carport and utility room on the rear. | | | |
| 205. | 404 4TH AVENUE | CRAFTSMAN | CA. 1923 | C |
| | One-story, brick-veneer bungalow, oriented perpendicular to the street. The shallow hip roof has exposed rafter ends, one chimney, and a cross half hip over the east-end screened porch. The front door has three lights and two panels; the typical window is 4/1. The house has been enlarged to the rear with the enclosure of a former porch and extending it back. | | | |
| 206. | 406 4TH AVENUE | CRAFTSMAN | CA. 1926 | C |
| | One and a half story, stucco bungalow with gable roof, one chimney and one dormer. The full-width front porch is undercut from the main roof. The 4-light/4-panel front door is flanked to each side by a pair of 4/1 double-hung windows. A carport has been added to the rear of the house. | | | |
| 207. | 409 4TH AVENUE | MEDITERRANEAN | CA. 1924 | C |
| | Large, two-story, stuccoed residence with large, tiled roof with deep overhang supported by shallow brackets. The symmetrically placed entrance porch has Tuscan columns, a six-light transom, twelve-light sidelights, and a paneled door. To each side of the recessed entrance are two 2-light pairs of casement doors with fanlights. The more typical opening is an 8/1 double hung window. The house steps back slightly on the east, and has a one-story projecting bay on the west. [Photo 23 of 24] | | | |
| 208. | 410 4TH AVENUE | CRAFTSMAN | CA. 1920 | C |
| | One and a half story, wood-frame bungalow, oriented perpendicular to the street, with cross gable over the front porch, two chimneys, deep overhangs, and knee braces. The full-width, three-bay front porch is supported on paired wood columns. The entrance in the center bay is flanked by 6/1 double-hung windows. A flat-roofed addition was added on the east elevation between 1925 and 1931. A carport and utility room have been added to the rear. | | | |
| 209. | 107 5TH AVENUE | TRADITIONAL | CA. 1948 | NC |
| | Two-story, concrete-block residential unit with gable roof, double-hung windows, flush wood door, and one-story side entrance and porch. | | | |

United States Department of the Interior
National Park Service

National Register of Historic Places
Continuation Sheet

Section number 7 Page 41 - OAKS DISTRICT, HATTIESBURG, MISS.

- | | | | | |
|------|--|------------------|----------|----|
| 210. | 201 5TH AVENUE | NO STYLE | CA. 1924 | NC |
| | One-story, wood-frame, severely remodeled residence with non-original brick veneer, a shallow gable roof, 6-light/1-panel front door, and replacement Chicago-type metal windows. | | | |
| 211. | 204 5TH AVENUE | TRADITIONAL | CA. 1924 | NC |
| | One-story, brick-veneer residence, oriented perpendicular to the street, with gable roof, boxed eaves and a cross gable over a carport. The originally full-width front porch has been enclosed. The roof appears to have been modified. | | | |
| 212. | 309 5TH AVENUE | INTERNATIONAL | CA. 1955 | NC |
| | One-story, brick-veneer contemporary residence, well-hidden behind a garden wall. | | | |
| 213. | 312 5TH AVENUE | RANCH | CA. 1956 | NC |
| | One-story, wood-frame residence with shallow hip roof, boxed eaves, sliding metal windows, and front door with applied panels. | | | |
| 214. | 404 5TH AVENUE | CRAFTSMAN | CA. 1923 | C |
| | Finely detailed, one-story, wood-frame bungalow with shallow gable roof and two street-facing cross gables. The roof has deep overhangs, exposed rafter ends, knee braces, and one chimney. The partial-width front porch has short columns set on masonry piers. The typical window is 4/1 double hung, and the entrance has an 8-light door. There is a small bay on the east side, and an open porch on the southwest corner. | | | |
| 215. | 405 5TH AVENUE | COLONIAL REVIVAL | CA. 1920 | C |
| | One-story, wood-frame, oriented perpendicular to the street. The hipped roof has boxed eaves, and a cross gable over the partial-width front porch supported on Doric columns. The centrally located entrance is flanked by 6/6 double hung windows. On the rear of the house is a carport. | | | |
| 216. | 406 5TH AVENUE | CRAFTSMAN | CA. 1923 | C |
| | One-story, brick-veneer bungalow with hipped roof exposed rafter ends, one chimney, and cross half-hip over the entrance porch. The multi-light front door is flanked by 4/1 double-hung windows. A carport has been added to the east elevation. | | | |
| 217. | 407 5TH AVENUE | COLONIAL REVIVAL | CA. 1921 | C |
| | One-story, wood-frame bungalow with hipped roof, boxed eaves, one chimney, and cross gable over the partial-width front porch supported by Tuscan columns. The centrally coated front door has six panels, and flanking windows are 2/2 double hung. | | | |

United States Department of the Interior
National Park Service

National Register of Historic Places
Continuation Sheet

Section number 7 Page 42 - OAKS DISTRICT, HATTIESBURG, MISS.

- | Section number | Address | Style | CA. | Code |
|----------------|---|-------------------------|------|------|
| 218. | 409 5TH AVENUE | COLONIAL REVIVAL | 1942 | C |
| | One and a half story, wood-frame residence, clad in asbestos siding, with wall dormer, centrally located entrance flanked by 8/8 double-hung windows, and aluminum awnings over all street-facing windows. | | | |
| 219. | 410 5TH AVENUE | MEDITERRANEAN | 1921 | NC |
| | Two-story, wood-frame structure with asbestos siding which has been significantly altered. The pyramidal roof has a central chimney, three dormers, and boxed eaves. The windows are all metal replacements, and the full-width, one-story front porch has been enclosed and grossly modified. | | | |
| 220. | 411 5TH AVENUE | CRAFTSMAN | 1924 | C |
| | One-story, stucco bungalow, oriented perpendicular to the street, with a gable roof, exposed rafter ends, a shed dormer, one chimney, and glass-enclosed, full-width front porch. | | | |
| 221. | 203 6TH AVENUE | CRAFTSMAN | 1928 | C |
| | One-story, stucco bungalow with enclosed entrance porch. Visible windows are 8/12 double-hung. A carport has been added to the rear of the house. | | | |
| 222. | 207 6TH AVENUE | COLONIAL REVIVAL | 1924 | C |
| | One-story, wood-frame bungalow with gable roof, exposed rafter ends, and two chimneys. The small entrance porch has a gable roof and is supported on Doric columns. Windows are 6/1 double hung, and the front door has six lights over two panels. | | | |
| 223. | 210 6TH AVENUE | MEDITERRANEAN/CRAFTSMAN | 1910 | C |
| | One-story, wood-frame residence on a commanding site. The hipped roof has two dormers, one chimney and boxed eaves. The independently roofed, full-width front porch wraps down each side and is supported by pairs of Doric columns. The front door has an oval light and is flanked by 1/1 double-hung windows. On the east side is a projecting bay. | | | |
| 224. | 300 6TH AVENUE | RANCH | 1950 | NC |
| | One-story, brick-veneer house, oriented parallel to the street, with shallow hip roof, one chimney, centrally located entrance, and varied windows. | | | |
| 225. | 301 6TH AVENUE | COLONIAL REVIVAL | 1924 | C |
| | One-story, wood-frame bungalow, oriented perpendicular to the street. The roof has three gables, one chimney, and boxed eaves. The front porch has a barrel roof and is supported on Tuscan columns. The 6-panel front door has 12-light sidelights and is flanked by 6/6 double-hung windows with blinds. A garage is on the east elevation, backed by a screened porch. | | | |

United States Department of the Interior
National Park Service

National Register of Historic Places
Continuation Sheet

Section number 7 Page 43 - OAKS DISTRICT, HATTIESBURG, MISS.

- | | | | | |
|--|-----------------------|--------------------------------|-----------------|-----------|
| 226. | 303 6TH AVENUE | CRAFTSMAN | CA. 1923 | C |
| One-story, wood-frame bungalow with gable roof, oriented perpendicular to the street, with gable roof, exposed rafter ends, and knee braces. The 2-panel front door is protected by an entrance hood and flanked by pairs of 6-light windows with 4-light transoms. A flat-roofed wing on the east elevation appears to be an addition, but is on a 1925 Sanborn map. A carport is on the east side of the house at the rear. | | | | |
| 227. | 305 6TH AVENUE | NO STYLE | CA. 1924 | NC |
| One-story, brick veneer residence with hip roof, centrally located 8-panel front door, slightly recessed and flanked by 12-light windows. | | | | |
| 228. | 370 6TH AVENUE | CRAFTSMAN | CA. 1917 | NC |
| One-story, wood-frame bungalow, oriented perpendicular to the street, with hip roof, boxed eaves, and one squat dormer. The originally full-width front porch has been partially enclosed. The front door has six panels, and the typical window is 6/6 double hung. The rear of the house has been enlarged and a carport added. | | | | |
| 229. | 309 6TH AVENUE | MEDITERRANEAN/CRAFTSMAN | CA. 1920 | C |
| One and a half story, wood-frame bungalow, oriented perpendicular to the street, with a shallow projection on each side. The full-width front porch is undercut from the main roof and supported on box columns. The typical window is 12/1 double hung. The door is flush wood with three lights. | | | | |
| 230. | 311 6TH AVENUE | CRAFTSMAN | CA. 1914 | C |
| One-story, wood-frame bungalow, oriented perpendicular to the street. The roof has boxed eaves, one chimney, and one dormer. The former front porch has been enclosed with brick veneer. The typical window is 12/1 double hung. According to Sanborn insurance maps, this house has been extensively altered and enlarged. | | | | |
| 231. | 312 6TH AVENUE | MEDITERRANEAN | CA. 1926 | C |
| Very large, two-story, stucco house on a spacious lot, oriented parallel to the street. The hipped roof has red tiles, deep overhangs, and one chimney. The asymmetrical facade has an engaged porch with Doric columns. The entrance has a leaded fanlight and sidelights. The second-story windows are paired 6/6 double hung. The ten-light pairs of french doors on the first floor have decorative semi-circular panels above. A living wing and carport are on the west elevation. | | | | |

United States Department of the Interior
National Park Service

National Register of Historic Places
Continuation Sheet

Section number 7 Page 44 - OAKS DISTRICT, HATTIESBURG, MISS.

- | | | | | |
|--|-----------------------|--------------------------------|-----------------|-----------|
| 232. | 403 6TH AVENUE | CRAFTSMAN | CA. 1924 | C |
| One-story, brick-veneer bungalow, oriented perpendicular to the street, with intersecting gable roofs. The full-width former front porch is undercut from the main roof and has been enclosed with glass and brick. The house has been enlarged on the west side and to the rear. | | | | |
| 233. | 404 6TH AVENUE | COLONIAL REVIVAL | CA. 1921 | C |
| Large, two-story, wood-frame residence with hip roof, exposed rafter ends, and three chimneys. The small one-story entrance porch has a gable roof supported by Doric columns. The entrance has a fanlight, 12-light sidelights, and a wood door. The typical window is 1/1 double hung. The house recessed back on the east elevation. The facade has a trellis. On the rear is a 6x14-foot enclosed porch. | | | | |
| 234. | 406 6TH AVENUE | MEDITERRANEAN/CRAFTSMAN | CA. 1911 | C |
| One-story, wood-frame residence with multiple hip roofs, two chimneys, ridge tiles, one dormer, and boxed eaves with shallow brackets. The undercut, full-width front porch is supported on paired wood columns. Windows have very small, multiple lights. On the east elevation, a former porch has been enclosed. There is a shallow projection on the west elevation. | | | | |
| 235. | 408 6TH AVENUE | QUEEN ANNE | CA. 1904 | C |
| Two-story, wood frame residence with pyramidal roof, boxed eaves, one chimney, and a cross gable over the northwest projection. The one-story, wraparound porch has a two-story section over the entrance bay. The cast-iron railings and spandrel are not original. The 2/2 double-hung windows are symmetrically placed on the facade. The entrance has a transom and sidelights. The house has been enlarged to the rear and was remodeled in 1972. | | | | |
| 236. | 409 6TH AVENUE | CRAFTSMAN | CA. 1924 | NC |
| One-story, extensively remodeled, brick-veneer residence, with a gable roof with a jerkin-head end over part of the former front porch. All openings are non-original. | | | | |
| 237. | 410 6TH AVENUE | COLONIAL REVIVAL | CA. 1928 | C |
| Two-story, brick-veneer residence with large hip roof, boxed eaves, two chimneys, and front porch that wraps down the east side. Windows are 4/1 double hung and placed singly, paired, or in threes. The entrance has a leaded transom and sidelights and a wood door. On the west and rear elevations are porches. | | | | |

United States Department of the Interior
National Park Service

National Register of Historic Places
Continuation Sheet

Section number 7 Page 45 - OAKS DISTRICT, HATTIESBURG, MISS.

- | Section number | Address | Style | CA. | Code |
|--|----------------|-----------|------|------|
| 238. | 411 6TH AVENUE | CRAFTSMAN | 1928 | C |
| One-story, wood-frame bungalow, oriented perpendicular to the street, with gable roof, one chimney, exposed rafter ends, and knee braces. The partial-width front porch is supported by boxed columns set on brick bases. The typical window is 8/1 double hung. The front door has eight lights and a wood shelf. There is a shallow projection on the west elevation, and a rear wing on the northeast corner. | | | | |
| 239. | 500 6TH AVENUE | MISSION | 1921 | C |
| One-story, stucco bungalow, oriented perpendicular to the street, with picturesque, complex roof with clipped eaves, red tiles, and one chimney. Windows appear to be replacements. The front door has three lights. The rear of the house has been enlarged, and a wing added on the southwest. | | | | |
| 240. | 501 6TH AVENUE | MODERN | 1955 | NC |
| One-story, brick-veneer residence with gable roof, a dominant chimney, cross gable over a street-facing projection, metal casement windows, and 6-panel front door. | | | | |
| 241. | 504 6TH AVENUE | CRAFTSMAN | 1923 | C |
| One-story, wood-frame, oriented perpendicular to the street. The has exposed rafter ends and knee braces, and a ridge parallel to the street. The street-facing entrance porch is screen enclosed and supported on clustered, boxed columns set on brick piers. The typical window is 4/1 double hung; the front door has four lights. A carport has been added on the rear of the house. | | | | |
| 242. | 505 6TH AVENUE | CRAFTSMAN | 1935 | C |
| One-story, brick-veneer residence with gable roof, exposed rafter ends, and small gable over the entrance. The entrance has a circular head, and the flanking pair of windows are 6/1 double hung. On the west end is an open porch. | | | | |
| 243. | 506 6TH AVENUE | CRAFTSMAN | 1918 | C |
| Two-story, wood-frame residence with hipped roof with a decorative central gable, boxed eaves, shallow brackets, and symmetrical facade. Openings are greatly varied. The full-width front porch is both one and two stories, and supported on brick columns. | | | | |
| 244. | 507 6TH AVENUE | CRAFTSMAN | 1922 | C |
| One-story, brick veneer, asymmetrical bungalow with hipped roof, cross gable over the entrance porch, and a half hip over the right wing. | | | | |

United States Department of the Interior
National Park ServiceNational Register of Historic Places
Continuation SheetSection number 7 Page 46 - OAKS DISTRICT, HATTIESBURG, MISS.

-
- | | | | | |
|------|---|-------------------------|-----------------|-----------|
| 245. | 512 6TH AVENUE | TRADITIONAL | CA. 1972 | NC |
| | One-story, brick veneer house with multiple gable roofs and boxed eaves. The entrance porch takes on the form of a portico and is supported on slender columns. The symmetrical facade has 8/8 double-hung windows. There is a garage on the rear. | | | |
| 246. | 308 7TH AVENUE | COLONIAL REVIVAL | CA. 1950 | NC |
| | One-story, wood-frame residence with hip roof, boxed eaves, a central cross gable, entrance porch on the southwest corner, and varied windows. | | | |
| 247. | 405 7TH AVENUE | CRAFTSMAN | CA. 1942 | C |
| | One-story, wood-frame bungalow, clad in asbestos siding, with shallow roof, boxed eaves, 8/8 double-hung windows, and six-panel front door. | | | |
| 248. | 407 7TH AVENUE | COLONIAL REVIVAL | CA. 1946 | C |
| | One-story, wood-frame bungalow with gable roof, exposed rafter ends, small entrance porch, variety of windows, and a six-panel front door. On the east side of the house is a garage, and on the rear is an open porch. | | | |
| 249. | 501 7TH AVENUE | NO STYLE | CA. 1945 | NC |
| | Two-story, asymmetrical, nondescript wood-frame residence with gable roof, variety of window types (but most commonly 6/6 double hung), and a flush wood door. | | | |
| 250. | 512 7TH AVENUE | CRAFTSMAN | CA. 1942 | C |
| | One-story, concrete-block, symmetrically massed duplex with gable roof, cross gable over the entrance porch, boxed eaves, and 3/1 double-hung windows. | | | |
| 251. | 308 8TH AVENUE | SPANISH | CA. 1942 | C |
| | One-story stucco Spanish eclectic bungalow. | | | |
| 252. | 309 8TH AVENUE | COLONIAL REVIVAL | CA. 1936 | C |
| | One-story, wood-frame bungalow, clad in asbestos siding, oriented perpendicular to the street. The gable roof has boxed eaves, ridge tiles, and asbestos shingles. Windows are 6/6 double hung, and the front doors is louvered. The street facade is slightly undercut from the roof for an entrance stoop and bay window. There is a carport on the east elevation. | | | |
| 253. | 402 8TH AVENUE | CRAFTSMAN | CA. 1935 | C |
| | One-story, brick-veneer bungalow, oriented perpendicular to the street. The roof has intersecting gables, ridge tiles, boxed eaves, and one chimney. Windows are 6/1 double hung. A carport on the west abuts a screened entrance porch. | | | |

United States Department of the Interior
National Park Service

National Register of Historic Places
Continuation Sheet

Section number 7 Page 47 - OAKS DISTRICT, HATTIESBURG, MISS.

- | | | | | |
|------|---|-------------------------|-----------------|-----------|
| 254. | 403 8TH AVENUE | COLONIAL REVIVAL | CA. 1937 | C |
| | Two-story, brick-veneer apartment building with gable roof, boxed eaves, three dormers, small entrance porch with gable roof, and 6/6 double-hung windows. | | | |
| 255. | 404 8TH AVENUE | COLONIAL REVIVAL | CA. 1939 | C |
| | One-story, wood-frame residence, clad in asbestos siding, with gable roof with small cross gable forming an entrance porch. The front door has six panels, a false broken pediment, and sidelights. Street-facing windows are tripartite with 6/1 and 2/1 double-hung windows. | | | |
| 256. | 407 8TH AVENUE | COLONIAL REVIVAL | CA. 1936 | C |
| | One-story, wood-frame residence with gable roof, boxed eaves, and cross gable over an entrance porch supported on cast-iron pilasters. The six-panel front door has 3/3 double-hung sidelights. To the east of the entrance is a tripartite window, 9/9 and 3/3 double-hung windows. On the west elevation are two small projections, and on the rear, another projection with an open porch. | | | |
| 257. | 500-02 8TH AVENUE | RANCH | CA. 1966 | NC |
| | One-story, brick-veneer double, with shallow gable roof, metal windows, and six-panel doors. | | | |
| 258. | 207 10TH AVENUE | CRAFTSMAN | CA. 1926 | C |
| | One-story, stucco bungalow with hip roof, two chimneys, and cross half-hip roofs. The partial-width front porch is supported on stucco columns. The front door has eight lights, and windows are 4/1 double hung. There is a 4x9-foot projection on the west elevation. | | | |
| 259. | 209 10TH AVENUE | CRAFTSMAN | CA. 1928 | C |
| | One-story, wood-frame, oriented perpendicular to the street. The shallow gable roof has exposed rafter ends with decorative cut outs and jerkin-head ends. A partial-width entrance porch is supported on tapered, boxed columns. The typical window is 4/1 double hung. The front door has four lights over three panels. On the east elevation is a carport. On the rear of the house is an enclosed porch. | | | |
| 260. | 211 10TH AVENUE | CRAFTSMAN | CA. 1923 | C |
| | One-story, wood-frame bungalow with main hip roof intersected by multiple cross hips. The partial-width, screened entrance porch has a gable roof supported on boxed columns set on stucco bases. On the west elevation is a 3x9-foot projecting bay, and an enclosed rear porch abutting a small northwest wing. The typical window is 4/1 double hung. The front door has four lights over one panel. | | | |

United States Department of the Interior
National Park Service

National Register of Historic Places
Continuation Sheet

Section number 7 Page 48 - OAKS DISTRICT, HATTIESBURG, MISS.

- | Section number | Address | Style | CA. | Grade |
|--|-----------------|-----------|------|-------|
| 261. | 215 10TH AVENUE | CRAFTSMAN | 1923 | C |
| One-story, wood-frame bungalow, oriented perpendicular to the street. The gable roof has exposed rafter ends and knee braces, a rear cross gable, and projects over a partial-width entrance porch supported on boxed columns set on masonry piers. The front door has twelve lights, and double-hung windows have five lights over one. | | | | |
| 262. | 217 10TH AVENUE | CRAFTSMAN | 1926 | C |
| One-story, brick-veneer bungalow with gable roof, asbestos shingles, ridge tiles, one chimney, and two street-facing gables. The partial-width entrance porch is supported on boxed columns set on brick piers. On the rear is a ten-foot projection. | | | | |
| 263. | 223 10TH AVENUE | CRAFTSMAN | 1928 | C |
| One-story, wood-frame, stuccoed bungalow, oriented perpendicular to the street, with gable roof, boxed eaves and one chimney. The partial-width front porch has been enclosed, and an unsympathetic carport added to the east. The typical window is 4/1 double hung. | | | | |
| 264. | 301 10TH AVENUE | CRAFTSMAN | 1923 | C |
| One-story, stucco bungalow, oriented perpendicular to the street, with gable roof, exposed rafter ends and one chimney. The full-width porch is independently roofed and supported by round columns set on square bases. The front door has six panels, and windows are 4/1 double hung. | | | | |
| 265. | 302 10TH AVENUE | CRAFTSMAN | 1924 | C |
| One-story, wood-frame bungalow with gable roof, exposed rafter ends, and knee braces. The entrance has a small hood roof and a louvered door. The typical window is 4/1 double hung. | | | | |
| 266. | 303 10TH AVENUE | CRAFTSMAN | 1923 | C |
| One-story, wood-frame bungalow, clad in asbestos siding, oriented perpendicular to the street, with shallow gable roof, exposed rafter ends and knee braces. The full-width front porch is supported by boxed columns. There are two fifteen-light front doors and 4/1 and 1/1 double-hung windows on the facade. | | | | |
| 267. | 305 10TH AVENUE | CRAFTSMAN | 1923 | C |
| One-story, wood-frame bungalow with gable roof, exposed rafter ends and knee braces, oriented perpendicular to the street, with 2-light/6-panel front door, 1/1 double-hung street-facing windows, and a projection on the east elevation to the rear. | | | | |

United States Department of the Interior
National Park ServiceNational Register of Historic Places
Continuation SheetSection number 7 Page 49 - OAKS DISTRICT, HATTIESBURG, MISS.

268. **307 10TH AVENUE** **NO STYLE** **CA. 1923** **C**
One-story, wood-frame, residence, clad in asbestos siding, oriented perpendicular to the street, with steep hipped roof and cross gables. The street facade is covered by an aluminum awning supported on four thin pipes. The front door has nine lights over three panels, and the typical window is 1/1 double hung. There is a shallow projection on the east elevation, and a screened porch on the northwest corner.
269. **308 10TH AVENUE** **CRAFTSMAN** **CA. 1930** **C**
One-story, wood-frame bungalow with asbestos siding, gable roof, exposed rafter ends, one chimney, full-width, undercut front porch screened by a metal awning, and pairs of windows flanking the front door.
270. **311 10TH AVENUE** **CRAFTSMAN** **CA. 1926** **C**
One-story, wood-frame bungalow, oriented perpendicular to the street, with gable roof, exposed rafter ends, gable-end brackets, and one chimney. The entrance porch wraps the southeast corner and is supported by boxed columns set on brick piers. The typical window is 4/1 double hung, and the front door has three panels.
271. **400 10TH AVENUE** **CRAFTSMAN** **CA. 1923** **NC**
One-story, wood-frame bungalow, significantly altered, oriented perpendicular to the street. The shallow gable roof has exposed rafter ends and knee braces. The entrance porch is undercut from the main roof. The front of the house has been brick veneered, and a carport has been added adjacent to the entrance porch.
272. **402 10TH AVENUE** **CRAFTSMAN** **CA. 1923** **C**
One-story, wood-frame bungalow, clad in asbestos siding, well-hidden behind vegetation, and oriented parallel to the street. The house has exposed wood rafter ends, 3/1 and 4/1 double-hung windows, and a carport on the northwest corner.
273. **403 10TH AVENUE** **CRAFTSMAN** **CA. 1926** **C**
One-story, stuccoed bungalow. The gable roof has a deep overhang, knee braces, and two cross gables. The partial-width, screen-enclosed front porch is supported by boxed columns set on stuccoed bases. The typical window is 4/1 double hung, and the front door has a single light in a flush wood door. On the east and north elevations are small projections.

United States Department of the Interior
National Park Service

National Register of Historic Places
Continuation Sheet

Section number 7 Page 50 - OAKS DISTRICT, HATTIESBURG, MISS.

- | Section number | Address | Style | CA. | NC |
|---|-----------------|-----------|------|----|
| 274. | 405 10TH AVENUE | CRAFTSMAN | 1918 | NC |
| One-story, severely altered, stuccoed bungalow, oriented perpendicular to the street, with boxed eaves, and full-width, enclosed front porch. The typical original window is 4/1 double hung; the front door has fifteen lights. There is a two-story rear addition, and a screened porch on the east elevation. | | | | |
| 275. | 406 10TH AVENUE | NO STYLE | 1928 | C |
| One-story, wood-frame bungalow with shallow gable roof, jerkin-head ends, exposed rafter ends, one chimney, and a cross gable over the screened entrance porch. The partial-width, screened front porch has boxed columns set on brick piers. The typical window is 4/1 double hung. | | | | |
| 276. | 407 10TH AVENUE | CRAFTSMAN | 1926 | C |
| One-story, much altered, brick-veneer bungalow, oriented perpendicular to the street. The shallow hip roof has a street-facing cross hip, boxed eaves, and two chimneys. An addition has been made to the street facade. Original windows are 4/1, and the entrance door has fifteen lights. | | | | |
| 277. | 409 10TH AVENUE | CRAFTSMAN | 1923 | C |
| One-story, wood-frame bungalow with gable roof, exposed rafter ends, knee braces, 4/1 double-hung windows, and 4-light/1-panel door. | | | | |
| 278. | 411 10TH AVENUE | CRAFTSMAN | 1923 | C |
| One-story, wood-frame bungalow with shallow gable roof, exposed rafter ends, and unusual knee brackets. The partial-width front porch is supported by cast-iron pilasters. A carport has been added to the east elevation. | | | | |
| 279. | 413 10TH AVENUE | CRAFTSMAN | 1923 | C |
| One-story, much altered, wood-frame bungalow, clad in asbestos siding, oriented perpendicular to the street. The complex roof has exposed rafter ends and decorative knee braces. The partial-width front porch has been enclosed. The typical original window is 4/1 double hung. | | | | |
| 280. | 415 10TH AVENUE | CRAFTSMAN | 1923 | C |
| One-story, wood-frame bungalow, oriented perpendicular to the street, with a partial-width front porch supported by cast-iron pilasters. The roof has exposed rafter ends, knee braces, and one chimney. The typical window is 4/1 double hung; the flush wood front door has three lights. An enclosed porch is on the rear. | | | | |
| 281. | 417 10TH AVENUE | CRAFTSMAN | 1942 | C |
| One and a half story, wood-frame bungalow with steep gable roof, asbestos siding, 6/6 double-hung windows with aluminum awnings, and 6-light/2-panel front door. | | | | |

United States Department of the Interior
National Park Service

National Register of Historic Places
Continuation Sheet

Section number 8 Page 2 - OAKS DISTRICT, HATTIESBURG, MISS.

Pivotal contributing elements which are eligible for the National Register in their own right and likely architect-designed are: 809 Adeline, a circa 1905 Queen Anne cottage; 915 Adeline, a circa 1900 Queen Anne cottage [Photo 7 of 24]; the Mission Revival school at 301 Mamie, built about 1907 [Photo 14 of 24]; the circa 1906 Colonial Revival residence at 801 W. Pine, built for J.M. Powe [Photo 17 of 24]; 1002 W. Pine, a Mission bungalow built about 1929 for Frank Tatum [Photo 20 of 24]; 110 Pinehurst, a circa 1927 Colonial Revival residence [Photo 21 of 24]; 409 4th Avenue, a Mediterranean villa built about 1924 [Photo 23 of 24]; the circa 1926 Mediterranean-style house at 312 6th Avenue; and 410 6th Avenue, a Colonial Revival house built for G.L. Hawkins about 1928.

Among these elements are the homes of Hattiesburg's most prominent citizens, such as 110 Pinehurst. Here, W.O. Tatum, president of Tatum Lumber Company, built his impressive home called Pinehurst. At 809 Adeline, Herbert Camp, president of the Pole Stock Lumber Company, built his Queen Anne residence about 1905, and at 915 Adeline, Thomas Kennan, manager of the American Can & Foundry Company, built a Colonial Revival residence about 1900.

Although these elements are larger than the typical residences, they relate well to the detail and style of the other elements in the district.

The elements of the Oaks District reflect national architectural styles prevalent during its period of significance. The Craftsman style is by far the most prevalent found in the district (53%), reflecting the district's greatest period of growth. Examples of this style date from 1914 to 1946. They are modest bungalows, typical of the trends popularized by such national companies as the Aladdin Company and Gordon Van Tine Company. The second most prevalent style is the Colonial Revival (15%), the elements, with the exception only of 802 W. Pine and 205 4th Avenue, all reflecting the post-1920 version of the style, being built during the period of greatest development of the district. There are twenty-two examples of the Mediterranean villa style, dating from 1904 to 1926. The Queen Anne style is reflected in twenty elements built between 1900 and 1923.

The development of the Oaks District parallels the growth of Hattiesburg, and helps understand the history of the city by illuminating the impact of architectural styles on the city's growth. The date of 1900 was chosen as the beginning date of the period of significance, because it was at this time the district first started to develop, and two elements--208 4th Avenue and 915 Adeline--are from this date. The end date of 1942 was chosen because it is the fifty-year criteria date and the effect of Camp Shelby's reactivation was being felt on the local economy. Between the dates of 1900 and 1942, the architecture of the district reflects the historical pattern of the city's development, and the broad patterns of architectural taste as interpreted by a local lumbering economy. The 230 contributing elements constructed during this period of significance, as well as the surviving brick streets and oak

United States Department of the Interior
National Park Service

National Register of Historic Places
Continuation Sheet

Section number 8 Page 3 - OAKS DISTRICT, HATTIESBURG, MISS.

trees, reflect an integrity of design, materials, and workmanship, invoking the aesthetic sense of early twentieth-century Hattiesburg.

Under the influence of Captain William H. Hardy, Hattiesburg was chosen as the intersection of two rail lines. Incorporated in 1884, Hattiesburg experienced slow growth until 1900, when the Oaks district was first developing. Located in the heart of Mississippi's "Piney Woods" and on a major transportation link, Hattiesburg grew as a significant lumbering center. Although the first mill was built soon after 1883, it was not until ten years later that production flourished. Wiscassett Mill (1889), Tatum Sawmill (1893), J.J. Newman Lumber Company (1893), and Leaf River Lumber Company were among the area's early mills. As natural resources were exploited, more railroads connected to Hattiesburg, opening up more woods to the lumbering industry. After three more rail lines linked with Hattiesburg, it became the "Hub City" of regional transportation, and the fastest growing community in Mississippi. In 1911, thirty lumber wholesalers maintained offices in Hattiesburg, providing the raw material for the growing housing demand, and making possible the contributing elements of the Oaks District.

After World War I and the establishment of Camp Shelby, Hattiesburg experienced new growth, creating an additional demand for lumber and its by-products, providing an economic stimulus. As early as 1915, large areas of Mississippi's virgin forest were harvested. In 1919, lumbering reached its peak as the virgin forest dwindled at an alarming rate. It was during this period that the Oaks District reached its maturity. By the late 1920s, the woods were depleted, and lumber mills closed or drastically cut production. The Great Depression stymied growth of the city and of the Oaks District. Economic growth stagnated until the reactivation of Camp Shelby in 1940. This watershed event created 5,000 jobs and stationed 50,000 men for six years in the area, once again generating a boom-town atmosphere and taxing to the brink local housing and services.

The Oaks District is a tangible reminder of this historic growth and its impact on local architectural history.

United States Department of the Interior
National Park Service

National Register of Historic Places
Continuation Sheet

Section number 9 Page 2 - OAKS DISTRICT, HATTIESBURG, MISS.

Cook, Jody. "National Register of Historic Places Inventory Forms-Nomination Forms," for Hattiesburg Historic Neighborhood District and Hub City Historic District; Mississippi Department of Archives and History, 1980.

Esarey, Thomas. The Esarey Collection; Historic Moments of Early Hattiesburg. Hattiesburg Area Historical Society, 1973-1977.

Gowans, Alan. The Comfortable House. Cambridge, Mass.: M.I.T. Press, 1986.

Hattiesburg City Directory. Hattiesburg, Miss.: Hattiesburg City Directory Co., 1910.

Hattiesburg City Directory. Memphis, Tenn.: R.I. Polk and Co., 1918, 1921, 1927, 1929, 1935, 1937, 1939, 1941.

Hattiesburg (Mississippi) Public Library. Subject files on Hattiesburg.

Historic Hattiesburg. Hattiesburg, Miss.: Department of Planning & Community Development, Neighborhood Development District, City of Hattiesburg, nd.

Holt, David. Along the Line of the Mobile, Jackson, and Kansas City Railroad. Mobile, Ala.: Commercial Printing Co., n.d.

Incorporation Dates of All Towns and Cities in Mississippi. Federal Writers Project, 1937.

McCarthy, Kenneth, G., Jr. Hattiesburg A Pictorial History. Hattiesburg, Miss: Woodland Enterprises, 1989.

McLemore, Richard A., ed. A History of Mississippi, Vol. I. Hattiesburg: University & College Press of Mississippi, 1973.

Odom, Mackie. "The Introduction and Expansion of Railroad Lines in Mississippi, 1830-1973." Mississippi Geographer II: 51-59.

Price, David S. "The Mississippi Central Railroad: An Historical Sketch." The Sandhouse II: 3-7.

Robertson, Otis, comp. and ed. Facts about Hattiesburg. Hattiesburg: Progress Book and Job Print, 1898.

Rogers, Charles B., comp. Hattiesburg City Directory. Hattiesburg: The Daily Progress, 1905.

United States Department of the Interior
National Park Service

National Register of Historic Places
Continuation Sheet

Section number 9 Page 3 - OAKS DISTRICT, HATTIESBURG, MISS.

Rowe, Melodia B. Captain Jones - The Biography of a Builder. Hamilton, Ohio: Hill-Brown Printing Co., 1942.

Rowland, Dunbar, ed. Encyclopedia of Mississippi History, Vol. III. Atlanta, Ga.: Southern Historical Publishing Assoc., 1907.

Rowland, Dunbar. History of Mississippi, the Heart of the South. Vol. II. Chicago-Jackson: S.J. Clarke Publishing Co., 1925.

Sanborn Insurance Company Maps of Hattiesburg, Mississippi, for the years 1898, 1903, 1906, 1910, 1915, 1925, 1931, 1961. New York: Sanborn Map Company.

Source Material for Mississippi. Forrest County, Vol. 18, part 1. Federal Writers Project, 1936-39.

Sparks, William H. The Memories of 50 Years. Philadelphia: Claxton, Remsen and Haffelfinger; Macon, Ga.: J.W. Burke and Co., 1870.

Thompson, Ray. "Gulf and Ship Island Railroad." Down South (September-October 1964): 5.

United States Bureau of the Census. Population Schedules, Forrest Co., Mississippi, 1890, 1900, 1910, 1920, 1930.

Watson, G.R. Historic Hattiesburg. Hattiesburg, Miss.: privately printed, 1974.

United States Department of the Interior
National Park Service

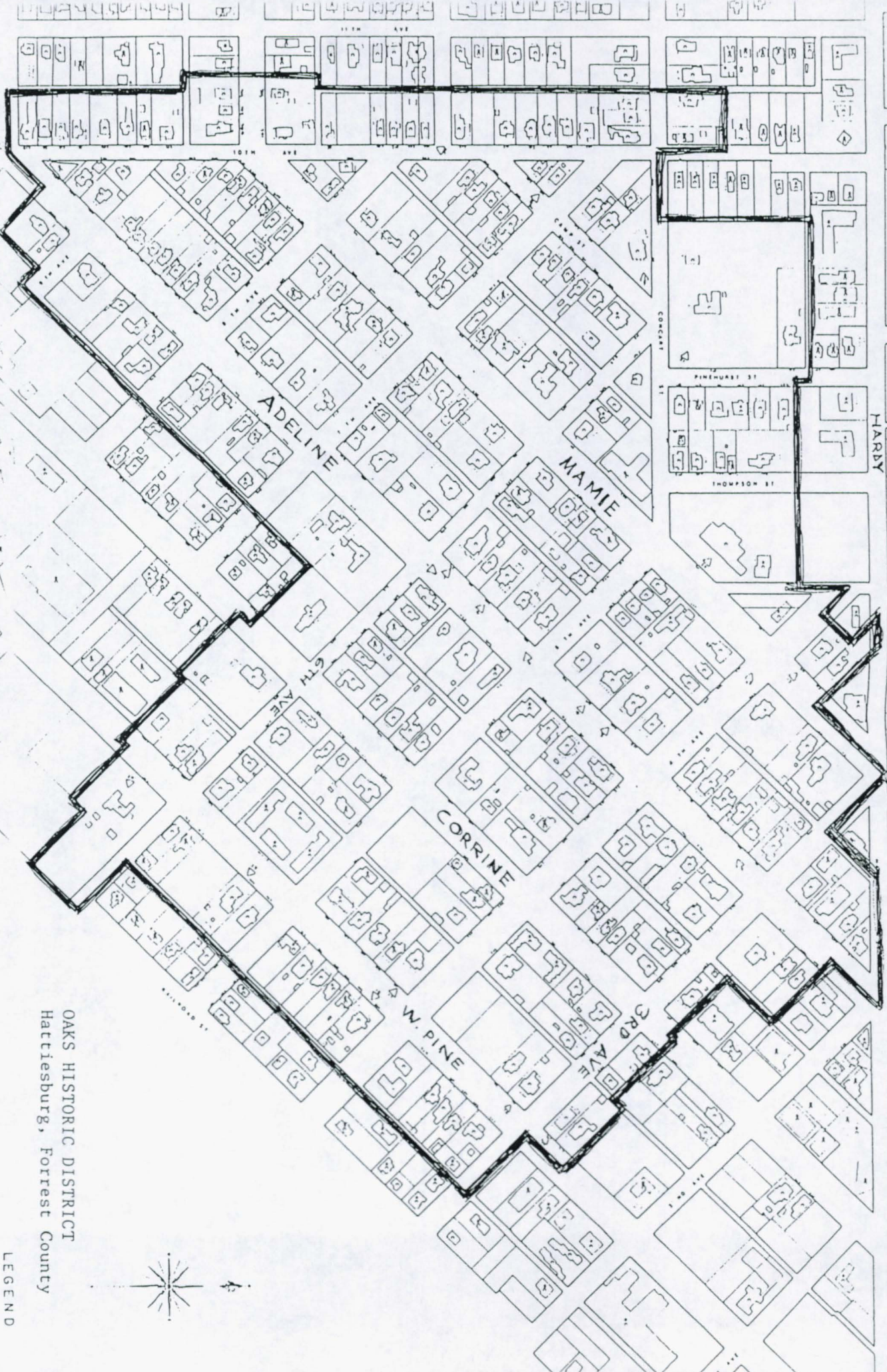
National Register of Historic Places
Continuation Sheet

Section number PHOTOS Page 1 OAKS HISTORIC DISTRICT, HATTIESBURG, MISS.

The following information is for all photographs:

- (1) Name of Property: See below
- (2) Location: Hattiesburg, Forrest County, Mississippi
- (3) Photographer: Robert J. Cangelosi, Jr.
- (4) Date of Photograph: May 1990, except
Photos 1, 2, 5, 10 & 24: June 1992
- (5) Location of Original Negative: Mississippi Department of Archives and History
- (6) Description of View: See below
- (7) Photograph Number: See below and individual photo

<u>Photo #</u>	<u>Name of Property</u>	<u>View</u>
1 of 24	700 BLOCK ADELINE	LOOKING NORTHEAST
2 of 24	700 BLOCK ADELINE	LOOKING SOUTHWEST
3 of 24	805 ADELINE	STREET ELEVATION
4 of 24	809 ADELINE	STREET ELEVATION
5 of 24	900 BLOCK ADELINE	LOOKING SOUTHWEST
6 of 24	909 ADELINE	STREET ELEVATION
7 of 24	915 ADELINE	STREET ELEVATION
8 of 24	801 CAMP	STREET ELEVATION
9 of 24	200 CONCERT	STREET ELEVATION
10 of 24	900 BLOCK ADELINE	LOOKING SOUTHWEST
11 of 24	900 CORINNE	STREET ELEVATION
12 of 24	903 CORINNE	STREET ELEVATION
13 of 24	109 MAMIE	STREET ELEVATION
14 of 24	301 MAMIE	STREET ELEVATION
15 of 24	613 W. PINE	STREET ELEVATION
16 of 24	701 W. PINE	STREET ELEVATION
17 of 24	801 W. PINE	STREET ELEVATION
18 of 24	802 W. PINE	STREET ELEVATION
19 of 24	904 W. PINE	STREET ELEVATION
20 of 24	1002 W. PINE	STREET ELEVATION
21 of 24	110 PINEHURST	STREET ELEVATION
22 of 24	208 4TH AVENUE	STREET ELEVATION
23 of 24	409 4TH AVENUE	STREET ELEVATION
24 of 24	300 BLOCK 10TH AVENUE	LOOKING SOUTH



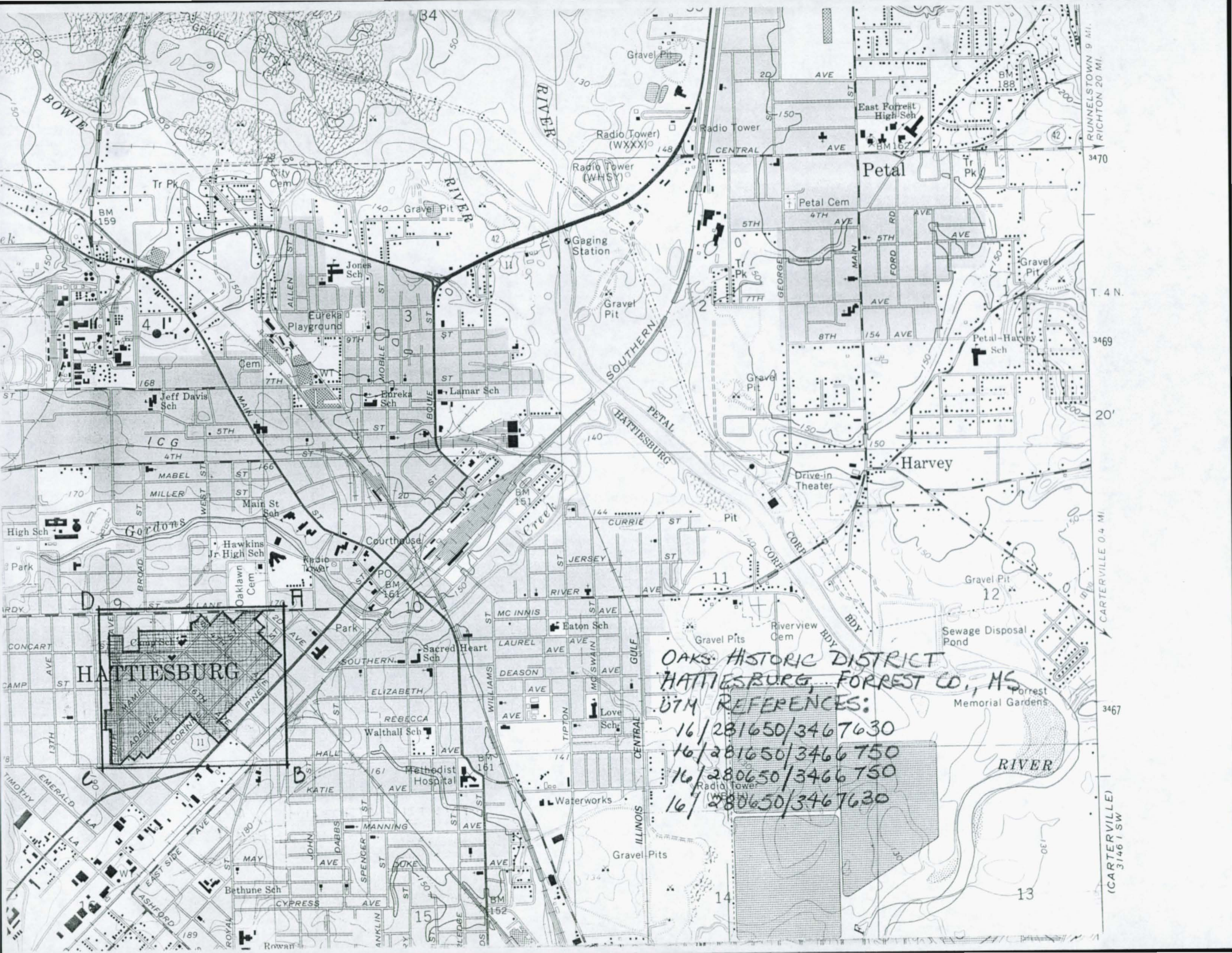
OAKS HISTORIC DISTRICT
Hattiesburg, Forrest County

LEGEND

C CONTRIBUTING

NC NON-CONFORMING





OAKS HISTORIC DISTRICT
HATTIESBURG, FORREST CO., MS

- UTM REFERENCES:
16/281650/3467630
16/281650/3466750
16/280650/3466750
16/280650/3467630



PHOTO 1 OF 24

THE OAKS HISTORIC DISTRICT

HATTIESBURE MS



PHOTO 2 OF 24

THE OAKS Historic District
HATTIESBORO MS



Para 3 OF 24

THE OAKS HISTORIC DISTRICT

HATTIESBURG MS



PHOTO 4 OF 24
THE OAKS HISTORIC DISTRICT
HATTIESBURG MS



Page 5 of 24

THE OAKS HISTORIC DISTRICT

HATTIESBURG MS



PHOTO 6 OF 24

THE OAKS HISTORIC DISTRICT
FLATTIE SUBORG HAS



915

Photo 10/24

THE OAKS HISTORIC DISTRICT

HATTIE SPOONER MS



PHOTO 8 OF 24

THE OAKS HISTORIC DISTRICT

HATTIESBURG MS



Photo 9 of 24

THE OAKS HISTORIC DISTRICT

HATTIE SBURG MS



Page 10 of 24
THE OAKS HISTORIC DISTRICT

WILKESBORO TN



Page 11 of 24

THE OAKS

HATTIESBORO MS

HISTORIC

DISTRICT



Photo 12 of 24

THE OAKS HISTORIC DISTRICT

HATTIESBURG MS



13 of 24

THE OAKS HISTORIC DISTRICT
HATTIESBURG, MS

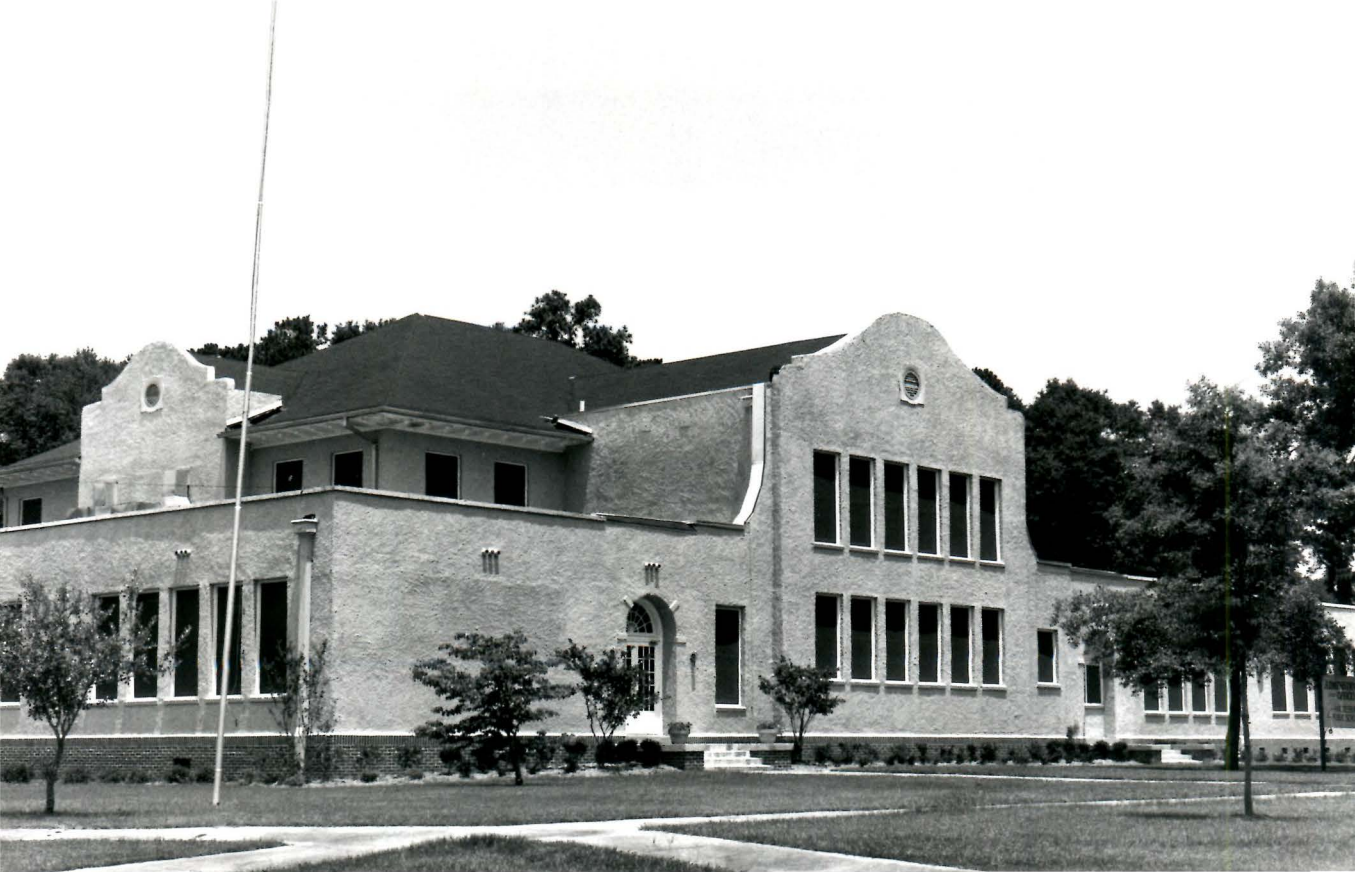


Photo 14 of 24

THE OAKS HISTORIC DISTRICT

LATTIESBURG MS



Photo 15 of 24

THE OAKS HISTORIC DISTRICT
HATT LESBURG, MS



Photo 16 of 24

THE OAKS

HISTORIC DISTRICT

11477 WESBURN MS



Page 17 of 24

HATTIESBURG MS

THE OAKS HISTORIC DISTRICT



Page 19 of 24

THE DAKS HISTORIC DISTRICT

HATTIESBURG MS



Page 19 of 24

THE DAIRS HISTORIC DISTRICT

1177 IRISBROOK MS



Photo 20 OF 24
THE OAKS Historic District
HATTIESBURG MS



Page 21 of 24

THE DAKS HISTORIC DISTRICT

HATTIESBURG MS



22 OF 24

THE OAKS HISTORIC DISTRICT
HATTIESBURG MS



442
PINE AVE

PHOTO 23 OF 24

THE OAKS HISTORIC DISTRICT

HATTIESBURG MS



Page 24 of 24

THE OAKS HISTORIC DISTRICT

HATTIE SEUKA MS