

United States Department of the Interior  
National Park Service

# National Register of Historic Places Registration Form

This form is for use in nominating or requesting determinations of eligibility for individual properties or districts. See instructions in *Guidelines for Completing National Register Forms* (National Register Bulletin 16). Complete each item by marking "x" in the appropriate box or by entering the requested information. If an item does not apply to the property being documented, enter "N/A" for "not applicable." For functions, styles, materials, and areas of significance, enter only the categories and subcategories listed in the instructions. For additional space use continuation sheets (Form 10-900a). Type all entries.

### 1. Name of Property

historic name

other names/site number NORTH MAIN STREET HISTORIC DISTRICT

### 2. Location

street & number Red/ICRR/Gordon's Creek/South, North & Providence St.  n/a not for publication

city, town Hattiesburg

state Mississippi code MS county Forrest code 35 vicinity  n/a zip code 39401

### 3. Classification

Ownership of Property

- private
- public-local
- public-State
- public-Federal

Category of Property

- building(s)
- district
- site
- structure
- object

Number of Resources within Property

Contributing	Noncontributing	
<u>260</u>	<u>87</u>	buildings
<u>0</u>	<u>0</u>	sites
<u>0</u>	<u>0</u>	structures
<u>0</u>	<u>0</u>	objects
<u>260</u>	<u>87</u>	Total

Name of related multiple property listing:  
n/a

Number of contributing resources previously listed in the National Register 1

### 4. State/Federal Agency Certification

As the designated authority under the National Historic Preservation Act of 1966, as amended, I hereby certify that this  nomination  request for determination of eligibility meets the documentation standards for registering properties in the National Register of Historic Places and meets the procedural and professional requirements set forth in 36 CFR Part 60. In my opinion, the property  meets  does not meet the National Register criteria.  See continuation sheet.

Kenneth H. P. Paul

Signature of certifying official

Deputy State Historic Preservation Officer

State or Federal agency and bureau

MARCH 8, 1993  
Date

In my opinion, the property  meets  does not meet the National Register criteria.  See continuation sheet.

Signature of commenting or other official

Date

State or Federal agency and bureau

### 5. National Park Service Certification

I, hereby, certify that this property is:

entered in the National Register.

See continuation sheet.

determined eligible for the National Register.  See continuation sheet.

determined not eligible for the National Register.

removed from the National Register.

other, (explain:)

Signature of the Keeper

Date of Action



6. Function or Use

Historic Functions (enter categories from instructions)  
DOMESTIC: Single Dwelling

Current Functions (enter categories from instructions)  
DOMESTIC: Single Dwelling

7. Description

Architectural Classification  
(enter categories from instructions)

Materials (enter categories from instructions)

Bungalow/Craftsman

Queen Anne

Colonial Revival

foundation brick, concrete

walls wood, brick, stucco

roof asphalt, asbestos

other

Describe present and historic physical appearance.

The North Main Street Historic District encompasses a large portion of the northeast quadrant of Hattiesburg, Mississippi. It is encircled by Red Street on the north, the Illinois Central Railroad on the east, Gordon's Creek on the south, and South, North, and Providence streets on the west. The actual boundaries are illustrated on the scaled district map. The boundaries are drawn so as to include as many elements as possible of significance and integrity (261 contributing and 87 non-contributing) which define the district's character. The boundaries are also drawn in such a manner as to define a cohesive sense of time and place, distinguished from adjacent historic and non-historic areas. The non-contributing elements within the boundaries are generally of the same scale, material, detail, setting, and workmanship as contributing elements of the district, or are historic elements which have lost their integrity and do not adversely impact the district's sense of place. In rare cases, non-contributing elements are in fact intrusions into the district, but do not overwhelm the integrity of the district.

North of the district, the character of the city's fabric changes radically, with recent construction and an industrial plant. To the east of the district is the Illinois Central Railroad line and associated businesses. The residential area between the railroad and the district contains historic elements which have lost their integrity due to alterations or deterioration, resulting in an east boundary that closely follows Main Street, despite the fact that historically the North Main Street neighborhood extended to the rail line. To the south, the natural boundary of Gordon's Creek separates the district from the neighborhood to the south that contains generally a younger housing stock (1930s). Louise Street is historically part of the North Main neighborhood, but was excluded due to loss of integrity and numerous non-historic elements. The southwest corner of the district nearly abuts the Hub City Historic District. The western boundary is drawn very irregularly due to loss of integrity of the neighborhood's elements in this direction.

The district's terrain is generally flat, and the street pattern is basically a north-south, east-west gridiron, with North Main running diagonally northwest to southeast.

As the city expanded along its north-south thoroughfare from its downtown core, the district developed as a residential neighborhood, with spot commercial and institutional elements along North Main, such as the 1912 Renaissance-style Main



## 8. Statement of Significance

Certifying official has considered the significance of this property in relation to other properties:

nationally  statewide  locally

Applicable National Register Criteria  A  B  C  D

Criteria Considerations (Exceptions)  A  B  C  D  E  F  G

Areas of Significance (enter categories from instructions)  
Architecture

Period of Significance  
1896-1942

Significant Dates  
n. a.

Cultural Affiliation

n. a.

Significant Person

n. a.

Architect/Builder

n. a.

State significance of property, and justify criteria, criteria considerations, and areas and periods of significance noted above.

The North Main Street Historic District is significant as a tangible link to Hattiesburg's evolution from a whistle-stop railroad town to the regional center of southeast Mississippi. As the residential counterpart to the commercial Hub City Historic District, the North Main District is an identifiable and cohesive district with an aesthetic sense of this past period of growth through elements which maintain their integrity. These elements represent a continuity of design style, type, period, and method of construction of architecture stemming from a shared cultural background and availability of materials. The period of significance for the district is from 1896 through 1942.

Hattiesburg experienced slow growth as a railroad and lumbering town until the turn of the century. Although the first lumber mill was built soon after 1883, it was not until ten years later that production became a significant factor in the city's rapid development. As the natural resources of the area were exploited, additional railroads connected to Hattiesburg, opening up more woods to the lumber industry. The Gulf & Ship Island Railroad reached Hattiesburg in 1897, linking the "Piney Woods" with the deep-water port of Gulfport, Mississippi. Soon thereafter, the Mobile, Jackson, and Kansas City railroads arrived in Hattiesburg in 1903, and the Mississippi Central Railroad in 1908. These railroads not only serviced Hattiesburg, but many of them located support services here, creating jobs and a demand for housing. From 1897 to World War I, Hattiesburg grew from a village to Mississippi's fourth largest city. New railroads and lumber mills made Hattiesburg the fastest growing community in Mississippi, with its population tripling from 4,175 in 1900 to 11,733 in 1910. Between 1900 and 1910, streets were paved and municipal police, fire and waterworks created, as well as a streetcar system. In 1908, Hattiesburg was made the county seat of the newly created Forrest County.

Lumbering and the railroads dominated, but were not the sole basis of, the local economy during the pre-World War I era; as the city grew, a more diversified economy developed. In 1917, the U.S. War Department announced plans to create a national military training camp, Camp Shelby, nearby. Here, 40,000 men would be stationed.

See continuation sheet



**9. Major Bibliographical References**

American Life Foundation. Aladdin Homes, 1918-1919 (Watkins Glen, N.Y.: American Life Books, 1985 reprint).

American Life Foundation. Gordon-Van Tine Company Architectural Details, 1915 (Watkins Glen, N.Y.: American Life Books, 1985, reprint).

Claiborne, J.F.H. "A Trip Through the Piney Woods." Publications of the Mississippi Historical Society. IX:487-538.

Continental Consultants, Inc. "Comprehensive Plan for the City of Hattiesburg, Mississippi," 1988.

See continuation sheet

Previous documentation on file (NPS):

- preliminary determination of individual listing (36 CFR 67) has been requested
- previously listed in the National Register
- previously determined eligible by the National Register
- designated a National Historic Landmark
- recorded by Historic American Buildings Survey # \_\_\_\_\_
- recorded by Historic American Engineering Record # \_\_\_\_\_

Primary location of additional data:

- State historic preservation office
- Other State agency
- Federal agency
- Local government
- University
- Other

Specify repository: \_\_\_\_\_

**10. Geographical Data**

Acreage of property 161

UTM References

A	1 6	2 8 1 8 8 0	3 4 6 9 6 8 0
	Zone	Easting	Northing

B	1 6	2 8 1 8 8 0	3 4 6 8 0 7 0
	Zone	Easting	Northing

C	1 6	2 8 0 6 3 0	3 4 6 8 0 7 0
---	-----	-------------	---------------

D	1 6	2 8 0 6 3 0	3 4 6 9 6 8 0
---	-----	-------------	---------------

See continuation sheet.

Verbal Boundary Description

The boundaries are as shown on the accompanying scale map. A larger and more easily readable blue-line map is on file at the State Historic Preservation office.

See continuation sheet (scale map)

Boundary Justification

See continuation sheet

See continuation sheet

**11. Form Prepared By**

name/title	Robert J. Cangelosi, Jr., A.I.A.	date	15 July 1992
organization	KOCH AND WILSON ARCHITECTS	telephone	504-581-7023
street & number	1100 Jackson Avenue	state	LA
city or town	New Orleans	zip code	70130



United States Department of the Interior  
National Park Service

National Register of Historic Places  
Continuation Sheet

Section number 7 Page 2 - NORTH MAIN DISTRICT, HATTIESBURG, MISS.

Street Baptist Church at 1111 Main Street [Photo 12 of 27], and the 1902 former drugstore at 1012 Main Street. Main Street developed as the fashionable street of Hattiesburg as fine homes on large lots, such as the Queen Anne house at 867 Main [Photo 8 of 27] and the Colonial Revival house at 1028 [Photo 10 of 27] were built about 1900. The Mediterranean-style house at 1122 Main [Photo 13 of 27] was built about 1904, and the Prairie-style house at 920 Main [Photo 9 of 27] about 1920.

Between 1886 and 1967, this district was subdivided and re-subdivided into twenty-seven subdivisions serving the city's growing need for housing. The majority of the district was subdivided prior to 1910, with such layouts as the G.D. Wilson Addition, and the C.J. Miller Addition in 1896.

The size and styles of the houses built in the district range from large, two-story structures to small, one-story cottages and bungalows. However, the typical house in the district is a detached, single-family, one-story (91%), wood frame residence clad with wood siding (83%). Non-residential elements comprise only 3% of the district's total. Few designs are very sophisticated; most are of vernacular form.

Chronologically, 36% of the elements were constructed before 1910. By 1920, that percentage rose to 44%, and by 1930, to 65%; by 1942, 80% of the elements included in the North Main District had been built.

Based on surviving elements, there is no clear growth pattern in the district. Pre-1910 elements can be found throughout the district; however, the largest concentration is centered on West 4th Street. Other pockets can be found on West 5th Street, Mabel, and East 3rd Street. The post-1910 elements tend to be distributed evenly outside of these concentrated pockets. Post-1942 elements likewise are found throughout the district. Non-contributing intrusions of commercial buildings are found along North Main, and high-density apartments throughout the district. Their presence, although not desirable, does not significantly affect the integrity of the neighborhood.

A variety of architectural styles are found in the district, but the Craftsman (38%) and Queen Anne (34%) are the most prevalent. The Craftsman-style house is represented fairly evenly throughout the district. Typically, it is a one-story, wood-frame bungalow, oriented perpendicular to the street, with full-width or partial-width front porch, exposed rafter ends, purlins and knee braces, 4/1 double-hung windows, a wood and glass front door, and a lack of applied ornament. Typical examples include 123 College [Photo 1 of 27], built about 1926; 853 Main [Photo 6 of 27], circa 1900; 118 Miller [Photo 16 of 27], circa 1918; and 108 Walley [Photo 17 of 27], circa 1927.

Although the Queen Anne style can be found in both large and small forms, the smaller cottage is by far the most prevalent in the district. Typically, it has a steep, hip roof, boxed eaves, cross gable over a projecting bay, 1/1 double-hung



United States Department of the Interior  
National Park Service

National Register of Historic Places  
Continuation Sheet

Section number 7 Page 3 - NORTH MAIN DISTRICT, HATTIESBURG, MISS.

windows, partial-width front porch abutting the projecting bay, and an entrance with sidelights and a transom. Many of these cottages have had their porch details altered in the Craftsman style. Typical examples of the Queen Anne style include 205 Mabel and 1400 Main, both built circa 1900. A large, two-story version of the style can be seen at 1108 Main, also built about 1900.

Other architectural styles found in the district include the Colonial Revival (9%), represented in both its early turn of the century mode, such as 1028 Main, and its later 1930s "F.H.A." version, such as 109 Mabel (circa 1937), the Mediterranean (2%), such as 1122 Main. The Tudor Revival, Prairie, Spanish and Renaissance Revival represent less than one percent of the elements in the district.

Outstanding contributing elements include the 1921 Tudor Revival school at 848 Main, the large, well-detailed Colonial Revival residence at 1028 Main, built about 1900; the well-detailed, 1928 Spanish Revival style Jeff Davis Elementary School at 301 West 7th Street, corner Europa [Photo 26 of 27]; and 128 W. 8th Street, an exuberant Queen Anne cottage built about 1910. These elements could all be nominated in their own right; Old Hattiesburg High School at 848 Main is already listed in the National Register.

While the physical condition of most of the elements in the district is only fair, the area is stable. It is hoped that nomination of the district will encourage restoration of the neighborhood's historic elements.

Many of the elements have non-historic alterations to their fabric; if those alterations have been to such an extent that the element's integrity has been lost, such as the enclosure of a front porch, then it has been rated as non-contributing. However, in the event it were restored, its rating should be changed. Elements with alterations such as the installation of non-historic siding have been rated as contributing.

The inventory of buildings included in the North Main District is arranged alphabetically, according to street, with buildings cited by element number and by street address in ascending numerical order. Photograph references are made parenthetically at the end of the descriptive text if a photograph is included with the nomination. Elements are evaluated individually, according to the following rating system:

**C Contributing** buildings are essential to the district's sense of place, and sustain the architectural and historical significance of the district.

Contributing elements may be altered, but not to the point that their integrity is compromised.



United States Department of the Interior  
National Park Service

National Register of Historic Places  
Continuation Sheet

Section number 7 Page 4 - NORTH MAIN DISTRICT, HATTIESBURG, MISS.

**NC Non-Contributing** buildings do not contribute to the historical character of the district.

Non-Contributing buildings are those which disrupt the cohesion of the historic environment.

Non-Contributing elements include those buildings which are so deteriorated that their future is uncertain.

Non-Contributing elements include those historical buildings which have been remodeled to such a degree that their architectural integrity has been compromised. Restoration of original features could cause these buildings to become contributing.

Non-Contributing buildings include those residences which are compatible in scale, mass, material, setting, and detail, but which were constructed after the period of significance.

Dating of elements within the district is based on Sanborn Insurance Maps, on tax cards in the City Assessor's office, on city directories, and on architectural style.

The following is a summary of the 348 elements in the district:

USE:

RESIDENTIAL:	97%
NON-RESIDENTIAL:	3%

STORIES:

UNDER 2	91%
2 AND OVER	9%

MATERIALS:

WOOD SIDING	82%
BRICK VENEER	15%
STUCCO	2%
CMU	1%



United States Department of the Interior  
National Park Service

National Register of Historic Places  
Continuation Sheet

Section number 7 Page 5 - NORTH MAIN DISTRICT, HATTIESBURG, MISS.

---

RATINGS:

PREVIOUSLY LISTED IN NR	1	
CONTRIBUTING	260	75%
NON-CONTRIBUTING	87	25%
TOTAL	348	

STYLES:

CRAFTSMAN	38%
QUEEN ANNE	34%
COLONIAL REVIVAL	9%
OTHERS	19%

CONSTRUCTION DATES:

1895-1899	.3%
1900-1909	36%
1910-1919	8%
1920-1929	21%
1930-1939	8%
1940-1942	7%
1945-1992	20%

A description of each element in the district follows.



United States Department of the Interior  
National Park ServiceNational Register of Historic Places  
Continuation SheetSection number 7 Page 6 - NORTH MAIN DISTRICT, HATTIESBURG, MISS.

- 
- |    |  |                         |                 |           |
|----|--|-------------------------|-----------------|-----------|
| 1. | <b>506 BROAD</b>   | <b>NO STYLE</b>         | <b>CA. 1945</b> | <b>NC</b> |
|    | One-story, wood-frame residence on a brick foundation, with asbestos siding, a gabled asphalt-shingled roof, clipped eaves, one cross gable over an enclosed front porch, a flush wood entrance door, 6/6 double-hung metal windows, and an attached rear carport.   |                         |                 |           |
| 2. | <b>507 BROAD</b>   | <b>CRAFTSMAN</b>        | <b>CA. 1942</b> | <b>C</b>  |
|    | One-story, wood-frame bungalow on a brick foundation, with asbestos siding, a shallow, picturesque roof with asphalt shingles, exposed rafter ends, knee braces, one cross gable over a porch and carport, 3/1 double-hung windows, a two-bay, partial-width porch with an independent roof supported by boxed columns and extending into the carport. |                         |                 |           |
| 3. | <b>508 BROAD</b>   | <b>COLONIAL REVIVAL</b> | <b>CA. 1945</b> | <b>NC</b> |
|    | One-story, wood-frame residence on a brick foundation, with asbestos siding, a steeply gabled roof with asphalt shingles, exposed rafter ends, cross gable, a 6-lights/3-panel entrance door, 6/6 double-hung windows, metal awnings, and a partial-width, independently roofed porch with metal pilasters.  |                         |                 |           |
| 4. | <b>600 BROAD</b>   | <b>COLONIAL REVIVAL</b> | <b>CA. 1945</b> | <b>NC</b> |
|    | One-story, wood-frame house on a brick foundation, with a steep, multi-gabled, asphalt-shingled roof, boxed eaves, three cross gables, a flush entrance door, 2/2 double-hung and plate-glass windows, a single-bay, partial-width porch with independent roof supported by metal pilasters.   |                         |                 |           |
| 5. | <b>601 BROAD</b>   | <b>TUDOR</b>            | <b>CA. 1945</b> | <b>NC</b> |
|    | One-story, brick-veneer residence with a steep, multi-gabled roof with asbestos shingles, two cross gables, clipped eaves, two chimneys, a single-light door, 6/6 and 8/8 double-hung windows, and an entrance stoop with metal awning.  |                         |                 |           |
| 6. | <b>602 BROAD</b>   | <b>NEO-COLONIAL</b>     | <b>CA. 1945</b> | <b>NC</b> |
|    | One-story, wood-frame residence on a brick foundation, with asbestos siding, gabled roof with asphalt shingles, boxed eaves, 8/8 double-hung windows, a single-bay, partial-width entrance porch with metal pilasters supporting the undercut roof, and integral carport.  |                         |                 |           |
| 7. | <b>603 BROAD</b>   | <b>COLONIAL REVIVAL</b> | <b>CA. 1945</b> | <b>NC</b> |
|    | One-story, wood-frame residence on a brick foundation, with asbestos siding, a gabled roof with asphalt shingles, one cross gable, clipped eaves, 6/6 double-hung windows, a single-bay, partial-width, screen-enclosed porch with boxed columns and metal awning.   |                         |                 |           |



United States Department of the Interior  
National Park Service

National Register of Historic Places  
Continuation Sheet

Section number 7 Page 7 - NORTH MAIN DISTRICT, HATTIESBURG, MISS.

- | Section Number | Address   | Architectural Style | Construction Date | Condition |
|----------------|---|---------------------|-------------------|-----------|
| 8.             | 604 BROAD   | COLONIAL REVIVAL    | CA. 1945          | NC        |
|                | One-story, wood-frame residence, irregularly massed, with asbestos siding, gabled, asphalt-shingled roof, boxed eaves, one cross gable, 4/4 and 6/6 double-hung windows, a single-bay, partial-width entrance porch with metal pilasters, and an attached carport.  |                     |                   |           |
| 9.             | 605 BROAD   | COLONIAL REVIVAL    | CA. 1946          | NC        |
|                | One-story, wood-frame residence on a brick foundation, with asbestos siding, a shallow, gable roof with asphalt shingles, clipped eaves, a three-light flush wood entrance door, 6/6 double-hung windows, and a single-bay, partial-width porch with independent roof and metal pilasters.  |                     |                   |           |
| 10.            | 606 BROAD   | RANCH               | CA. 1954          | NC        |
|                | One-story, brick-veneer residence on a slab foundation with a shallow gable roof with asphalt shingles, boxed eaves, a flush door, 2/2 double-hung metal windows, and a single-bay, partial-width porch with metal pilasters.   |                     |                   |           |
| 11.            | 700 BROAD   | CRAFTSMAN           | CA. 1940          | C         |
|                | One-story, wood-frame residence on a brick foundation with asbestos siding, a shallow roof with asphalt shingles, six-panel front door, 4/1 double-hung windows, and a partial-width, three-bay porch, independently roofed and supported by metal pilasters with brackets.   |                     |                   |           |
| 12.            | 702 BROAD   | COLONIAL REVIVAL    | CA. 1948          | NC        |
|                | One-story, wood-frame residence on a brick foundation, with vinyl siding, a gabled roof with asphalt shingles, clipped eaves, one chimney, a single-light, flush wood entrance door, 2/2 and 1/1 double-hung metal windows, and an attached carport.  |                     |                   |           |
| 13.            | 117 COLLEGE   | MODERN              | CA. 1948          | NC        |
|                | Two brick-veneer apartment buildings with shallow gable roofs and full-width, two-story entrance porches. Windows are aluminum-framed, and doors flush wood.  |                     |                   |           |
| 14.            | 121 COLLEGE   | QUEEN ANNE          | CA. 1900          | C         |
|                | One-story, wood-frame cottage with steep hip roof, two cross gables, two chimneys, boxed eaves, an independently roofed entrance porch supported on boxed columns, replacement 4/1 double-hung windows, original 1/1 double-hung windows, diamond-patterned upper sash windows, 4-light transom and 9-light door. There are two bays on the west elevation and one on the east elevation. |                     |                   |           |



United States Department of the Interior  
National Park Service

National Register of Historic Places  
Continuation Sheet

Section number 7 Page 8 - NORTH MAIN DISTRICT, HATTIESBURG, MISS.

- | Section number  | Address      | Style            | CA.      | Code |
|---|--------------|------------------|----------|------|
| 15.   | 123 COLLEGE  | CRAFTSMAN        | CA. 1926 | C    |
| One-story, stucco bungalow, oriented perpendicular to the street. The full-width front porch is undercut from the main roof, which is gabled and has exposed rafter ends, knee braces, and two chimneys. The front door has three lights over three panels, and the typical window is 4/1 double-hung. [Photo 1 of 27]  |              |                  |          |      |
| 16.   | 104 COLUMBIA | QUEEN ANNE       | CA. 1900 | C    |
| One-story, wood-frame cottage with picturesque roof with asphalt shingles, boxed eaves, and one chimney. The independently roofed, wraparound porch is supported on non-original posts. Windows are typically 1/1 double-hung, and the entrance has a single-light transom and a 1-light/2-panel door. On the west elevation is a five-foot deep projection.  |              |                  |          |      |
| 17.   | 105 COLUMBIA | COLONIAL REVIVAL | CA, 1908 | C    |
| Well-detailed, two-story wood-frame residence, symmetrically massed, with asbestos shingle roof, wraparound porch and central wall dormer.  |              |                  |          |      |
| 18.   | 106 COLUMBIA | NO STYLE         | CA. 1904 | NC   |
| Two-story, wood-frame residence, clad in both asbestos and brick veneer, significantly altered. The roof has asphalt shingles and boxed eaves. Windows are 6/1 and 1/1 double hung, and there is a single-light transom over a single-light/two-panel door. An entrance porch with half-hip roof and brick piers replaces the original full-width front porch which extended down the west elevation to the one-story projection which does not appear on the 1915 Sanborn map.   |              |                  |          |      |
| 19.   | 107 COLUMBIA | QUEEN ANNE       | CA. 1900 | C    |
| Two-story, wood-frame cottage with very steep pyramidal roof with asbestos shingles, two street-facing cross gables, boxed eaves, and two chimneys. The independently roofed, screened front porch is supported by Craftsman-styled boxed columns set on masonry piers. Windows are Craftsman-styled, 4/1 double-hung, and the front door has 3-lights/1-panel sidelights and a transom. An original partial-width rear porch was enclosed between 1925 and 1931. Since 1961, the house has again been altered on the rear. |              |                  |          |      |
| 20.   | 110 EUROPA   | CRAFTSMAN        | CA. 1926 | C    |
| One-story, wood-frame bungalow, oriented perpendicular to the street, with hipped roof, asphalt shingles, exposed rafter ends, and a cross-gable over a partial-width, one-bay entrance porch. The 4-lights/4-panel front door is flanked by pairs of 4/1 double-hung windows. The house has been enlarged to the rear.   |              |                  |          |      |



United States Department of the Interior  
National Park Service

National Register of Historic Places  
Continuation Sheet

Section number 7 Page 9 - NORTH MAIN DISTRICT, HATTIESBURG, MISS.

- | Section Number   | Address     | Architectural Style | Approximate Date | Condition |
|--|-------------|---------------------|------------------|-----------|
| 21.  | 116 EUROPA  | COLONIAL REVIVAL    | CA. 1946         | NC        |
| One-story, wood-frame residence with L-shaped gable roof with cross gable, boxed eaves, street-facing bay window, 6/6 double-hung windows, 6-panel entrance door, and a street-facing, screened-in porch, undercut from the main roof. The rear wing and side carport are recent additions.  |             |                     |                  |           |
| 22.  | 128 EUROPA  | CRAFTSMAN           | CA. 1946         | NC        |
| One-story, wood-frame residence, oriented perpendicular to the street, with intersecting gable roofs, one chimney, exposed rafter ends, attic gable-end vent, 6/6 double-hung windows, an undercut, partial-width entrance porch, partially enclosed, and a rear carport.  |             |                     |                  |           |
| 23.  | 130 EUROPA  | QUEEN ANNE          | CA. 1910         | C         |
| One-story, wood-frame house on slab, with wood siding and brick veneer, oriented parallel to the street. The asphalt-shingled gable roof extends over a partial-width front porch. The asymmetrical facade has 2/2 double-hung aluminum windows and a flush wood door with three lights set diagonally. [Photo 2 of 27]  |             |                     |                  |           |
| 24.  | 123 GREEN   | TRADITIONAL         | CA. 1972         | NC        |
| One-story, brick-veneer apartment building with mansard roof and aluminum 6/6 double-hung windows.   |             |                     |                  |           |
| 25.  | 401 GREEN   | CRAFTSMAN           | CA. 1942         | C         |
| One-story, wood-frame residence, oriented perpendicular to the street, clad in asbestos siding, with shallow gable roof and exposed rafter ends. The partial-width front porch is screened in and shaded by an aluminum awning. There is another porch on the rear of the house.   |             |                     |                  |           |
| 26.  | 204 JACKSON | CRAFTSMAN           | CA. 1930         | C         |
| One-story, stuccoed, wood-frame residence, oriented perpendicular to Jackson Street. The shallow gable roof has asbestos shingles, exposed rafter ends, knee braces, one chimney and gable-end attic vent. The typical 9/1 double-hung window is often paired. There is an open porch on the north elevation, and two screened porches on the south elevation. |             |                     |                  |           |
| 27.  | 206 JACKSON | QUEEN ANNE          | CA. 1900         | C         |
| One-story, wood-frame cottage with steep hip roof, cross gables and boxed eaves. The street-facing projection abuts an independently roofed entrance porch that was added between 1915 and 1925, replacing an earlier circular-ended porch. The north and south elevations have shallow bays. Windows are typically 1/1 double-hung.                           |             |                     |                  |           |



United States Department of the Interior  
National Park Service

National Register of Historic Places  
Continuation Sheet

Section number 7 Page 10 - NORTH MAIN DISTRICT, HATTIESBURG, MISS.

- |     |               |                  |          |    |   |
|-----|---------------|------------------|----------|----|---|
| 28. | 210 JACKSON   | QUEEN ANNE       | CA. 1900 | C  | One-story, wood-frame cottage with picturesque street facade. The street-facing cross gables have decorative shingles, and the street-facing projection has clipped corners with decorative brackets. The wraparound front porch has been unsympathetically altered and partially enclosed. There are bays on both the north and south elevations. Two rear porches have been enclosed.               |
| 29. | 201 LEWIS     | RANCH            | CA. 1945 | NC | One-story, wood-frame residence, oriented parallel to the street, with gable roof, small entrance porch, aluminum sliding windows, and a carport undercut from the main roof on the north elevation.  |
| 30. | 202/204 LEWIS | CRAFTSMAN        | CA. 1940 | C  | One-story, wood-frame duplex, oriented parallel to the street. The gable roof has asbestos shingled, boxed eaves, two cross gables over the street-facing projections, a front porch, 6/6 double-hung windows, and a rear porch.  |
| 31. | 206 LEWIS     | CRAFTSMAN        | CA. 1900 | C  | One-story, wood-frame house with gable roof, two street-facing cross gables, entrance porch, paired 6/6 double-hung windows, and screen-enclosed rear porch.  |
| 32. | 300 LEWIS     | CRAFTSMAN        | CA. 1928 | C  | One-story, wood-frame bungalow, clad in asbestos siding. The roof has asphalt shingles, exposed purlins, knee braces, exposed rafter ends, and a cross gable. The typical window is 4/1 double-hung. The partial-width front porch is undercut from the main roof.  |
| 33. | 109 MABEL     | COLONIAL REVIVAL | CA. 1937 | C  | Two-story, wood-frame apartment building, clad in asbestos siding, with cross gables over the two projecting ends and the two-story entrance porch. There is a carport on both the east and west elevations, and a rear porch. The typical window is 6/6 double hung.   |
| 34. | 111 MABEL     | CRAFTSMAN        | CA. 1926 | C  | One and a half story wood-frame residence, oriented perpendicular to the street, with steep gable roof, large shed dormers, exposed rafter ends, knee braces, and double gable-end attic vents. The full-width, screened porch is independently roofed and supported on boxed columns set on brick piers. The typical window is 4/1 double-hung, and the front door has four lights over four panels. |
| 35. | 112 MABEL     | TRADITIONAL      | CA. 1971 | NC | Two-story, brick-veneer apartment building with shallow gable roof, aluminum 6/6 double-hung windows, six-panel doors, and full-length, two-story entrance porch.   |



United States Department of the Interior  
National Park Service

National Register of Historic Places  
Continuation Sheet

Section number 7 Page 11 - NORTH MAIN DISTRICT, HATTIESBURG, MISS.

- | 36. | 113 MABEL  | CRAFTSMAN            | CA. 1949 | NC |
|-----|--|----------------------|----------|----|
|     | One-story, brick-veneer residence with gable roof extending over the partial-width front porch supported by cast-iron pilasters set on masonry piers. The front door has six panels. There is a carport on the east elevation, and the house has been enlarged to the rear.  |                      |          |    |
| 37. | 114 MABEL  | TRADITIONAL          | CA. 1976 | NC |
|     | Two-story brick-veneer apartment building with aluminum windows, flush wood doors, and full-length two-story porch.  |                      |          |    |
| 38. | 115 MABEL  | CRAFTSMAN            | CA. 1941 | C  |
|     | One-story, stone-veneered bungalow with square mass, steep gable roof with exposed rafter ends, two street-facing cross gables, dominant chimney, paired 6/6 double-hung windows, flush wood front door with a single light, east elevation bay window, and a rear porch.  |                      |          |    |
| 39. | 116 MABEL  | CRAFTSMAN            | CA. 1928 | C  |
|     | One-story, wood-frame bungalow, oriented perpendicular to the street. The gable roof has a jerkin-head end, knee braces, and exposed rafter ends. The partial-width front porch is independently roofed and supported by wood columns set on masonry piers. The typical window is 4/1 double-hung.   |                      |          |    |
| 40. | 117 MABEL  | QUEEN ANNE           | CA. 1900 | C  |
|     | One-story, wood-frame cottage with hip roof, ridge tiles, asbestos shingles, street-facing cross gable, one chimney, nearly full-width entrance porch, patterned upper sash double-hung windows, entrance with 1/1 double-hung sidelights and single-light transom, shallow east elevation bay, and rear porch.  |                      |          |    |
| 41. | 118 MABEL  | NO STYLE             | CA. 1900 | NC |
|     | Two-story, brick-veneer apartments with shallow gable roof, full-length, two-story entrance porch undercut from the roof, 6/6 aluminum windows, and flush wood doors.  |                      |          |    |
| 42. | 119 MABEL  | QUEEN ANNE/CRAFTSMAN | CA. 1900 | C  |
|     | One-story Queen Anne cottage remodeled into the Craftsman style. The shallow gable roof has exposed rafter ends and extends over the street-facing projection to form its own gable end. The wraparound porch is independently roofed and supported on box columns. The entrance has 1/1 double-hung sidelights, a single-light transom, and a 1-light/4-panel door. The window in the street-facing projection has patterned sash lights. This house and 117 Mabel were once identical. |                      |          |    |



United States Department of the Interior  
National Park Service

National Register of Historic Places  
Continuation Sheet

Section number 7 Page 12 - NORTH MAIN DISTRICT, HATTIESBURG, MISS.

- | Section number   | MABEL            | Style             | CA.             | Condition |
|--|------------------|-------------------|-----------------|-----------|
| 43.  | <b>120 MABEL</b> | <b>QUEEN ANNE</b> | <b>CA. 1905</b> | <b>C</b>  |
| Two-story, wood-frame residence with pyramidal roof, asphalt shingles, one chimney, boxed eaves, decorative cross gable, full-width front porch that wraps the west elevation, asbestos siding, 1/1 double-hung windows, an entrance with a single-light transom and one-light/four-panels door, and a rear porch.   |                  |                   |                 |           |
| 44.  | <b>200 MABEL</b> | <b>QUEEN ANNE</b> | <b>CA. 1900</b> | <b>C</b>  |
| One-story, wood-frame residence with hip roof, asbestos shingles, decorative cross gable and cross gable over the street-facing projection. The partial-width front porch is independently roofed, supported by non-original metal pilasters. Windows vary and are non-original, as is the entrance with its fanlight transom, sidelights and paneled door. The rear of the house has been enlarged. |                  |                   |                 |           |
| 45.  | <b>201 MABEL</b> | <b>OTHER</b>      | <b>CA. 1950</b> | <b>NC</b> |
| One-story, wood-frame residence clad in asbestos siding, with hip roof, asphalt shingles, cross hip roof over street-facing gable, boxed eaves, aluminum windows, small entrance porch, and rear carport.  |                  |                   |                 |           |
| 46.  | <b>204 MABEL</b> | <b>CRAFTSMAN</b>  | <b>CA. 1928</b> | <b>C</b>  |
| One-story, wood-frame bungalow clad in asbestos siding, with shallow gable roof, asphalt shingles, exposed rafter ends, knee braces, gable-end attic vent, and a partial-width front porch, supported by metal pilasters, with aluminum awnings. Non-original aluminum windows are 2/2 double-hung, and there is a non-original east-elevation carport.  |                  |                   |                 |           |
| 47.  | <b>205 MABEL</b> | <b>QUEEN ANNE</b> | <b>CA. 1900</b> | <b>C</b>  |
| Well-detailed and preserved Queen Anne cottage with steep hip roof with asphalt shingles, two decorative street-facing cross gables with Eastlake rake details, wraparound porch with Eastlake columns and spandrals, two symmetrical porch bays with 1/1 double-hung windows flanking the entrance that has 1/1 double-hung sidelights, single-light transom, and Queen-Anne door. [Photo 4 of 27]  |                  |                   |                 |           |
| 48.  | <b>207 MABEL</b> | <b>CRAFTSMAN</b>  | <b>CA. 1926</b> | <b>C</b>  |
| One-story, wood-frame bungalow, oriented perpendicular to the street. The shallow gable roof has asbestos shingles, exposed rafter ends, a jerkin-head end, five chimneys, and gable-end attic vent. The full-width front porch is independently roofed, has boxed columns, and is screen-enclosed. The typical window is 4/1 double hung.   |                  |                   |                 |           |



United States Department of the Interior  
National Park Service

National Register of Historic Places  
Continuation Sheet

Section number 7 Page 13 - NORTH MAIN DISTRICT, HATTIESBURG, MISS.

- | 49. | 208 MABEL  | CRAFTSMAN  | CA. 1940 | C |
|-----|--|------------|----------|---|
|     | One-story, wood-frame bungalow, clad in asbestos siding, oriented perpendicular to the street, with gable roof, asphalt shingles, exposed rafter ends, partial-width entrance porch, west elevation porch, 4/1 double-hung windows, and 4-light/3-panel front door.  |            |          |   |
| 50. | 209 MABEL  | CRAFTSMAN  | CA. 1926 | C |
|     | One-story, brick-veneer bungalow, oriented perpendicular to the street, with shallow gable roof with asphalt shingles, a full-width, three-bay, screened front porch supported by boxed columns set on brick piers. Windows are typically 4/4 double-hung, and the entrance has a single-light transom and a 1-light/two-panel door. There is a carport on the rear elevation.   |            |          |   |
| 51. | 304 MABEL  | QUEEN ANNE | CA. 1900 | C |
|     | One-story, wood-frame cottage, clad in asbestos siding, with gable roof with asbestos shingles, boxed eaves, and a cross gable over a street-facing projection abutting the entrance porch supported by non-original boxed columns set on brick piers. Windows are 4/4 double-hung, and there is a single-light transom over the 1-light/4-panel front door.   |            |          |   |
| 52. | 306 MABEL  | QUEEN ANNE | CA. 1900 | C |
|     | One-story, wood-frame cottage with complex roof line, boxed eaves, independently roofed front porch supported by non-original boxed columns set on brick piers. Windows are aluminum replacements and 1/1 double-hung originals.   |            |          |   |
| 53. | 307 MABEL  | QUEEN ANNE | CA. 1900 | C |
|     | One-story, wood-frame cottage, oriented perpendicular to the street, with steep hip roof with ridge tiles, asbestos dutch-lap shingles, decorative dormer, and one chimney. The independently roofed, full-width front porch is supported by turned wood columns. Windows are 4/1 double-hung, and the entrance has 3-light/1-panel sidelights, a single-light transom and Queen-Anne door. There is a carport on the east elevation, and a porch on the rear (north). |            |          |   |
| 54. | 308 MABEL  | CRAFTSMAN  | CA. 1900 | C |
|     | One-story, wood-frame Queen Anne cottage remodeled in the Craftsman style and clad with asbestos siding. The gable roof has asphalt shingles, exposed rafter ends, knee braces, and a street-facing projection abutting an independently roofed entrance porch supported by wood columns. Windows are 1/1 double-hung, and the entrance has a two-light transom over a 2-light door, and 3-light/1-panel sidelights.   |            |          |   |



United States Department of the Interior  
National Park Service

National Register of Historic Places  
Continuation Sheet

Section number 7 Page 14 - NORTH MAIN DISTRICT, HATTIESBURG, MISS.

- | Section number | Address  | Style            | CA.      | Code |
|----------------|--|------------------|----------|------|
| 55.            | 309/311 MABEL  | COLONIAL REVIVAL | CA. 1945 | NC   |
|                | One-story, wood-frame duplex with asbestos siding, gable roof with asphalt shingles, 8/8 double-hung windows with false blinds, and two small entrance porches.  |                  |          |      |
| 56.            | 310 MABEL  | QUEEN ANNE       | CA. 1900 | C    |
|                | One-story, wood-frame cottage with hip roof, two street-facing cross gables, boxed eaves, paired 1/1 double-hung windows, an entrance with 3-light/1-panel sidelights and a 2-light door, and a non-original carport and entrance porch on the street facade.  |                  |          |      |
| 57.            | 312 MABEL  | CRAFTSMAN        | CA. 1928 | C    |
|                | One-story, wood-frame bungalow, oriented perpendicular to the street, with shallow gable roof, asbestos siding, partial-width, screen-enclosed front porch, and non-original carport added to the west elevation.  |                  |          |      |
| 58.            | 313 MABEL  | QUEEN ANNE       | CA. 1900 | C    |
|                | One-story, wood-frame cottage clad in asbestos siding, with steep roof with asbestos shingles, boxed eaves, and a cross gable over a street-facing projection abutting the independently roofed, screen-enclosed front porch. An open porch on the rear is backed by a utility room. The typical original window is 6/6 double-hung.   |                  |          |      |
| 59.            | 314 MABEL  | QUEEN ANNE       | CA. 1900 | NC   |
|                | One-story, wood-frame, substantially altered cottage, partially brick veneered. Windows are 4/1 double-hung, and the front door has four lights and three panels.  |                  |          |      |
| 60.            | 315 MABEL  | NO STYLE         | CA. 1900 | C    |
|                | One-story, wood-frame cottage with hip roof, two street-facing cross gables, boxed eaves, non-original, independently roofed front porch supported by metal pilasters. The typical window is 6/6 double-hung, and the non-original front doors are flush wood.   |                  |          |      |
| 61.            | 400 MABEL  | QUEEN ANNE       | CA. 1908 | C    |
|                | One-story, symmetrically massed cottage with a brick foundation, wood-frame construction, and a steep, pyramidal, asphalt-shingled roof with two cross gables. Windows are 4/1 double hung, and the entrance has a transom, three-lights-over-one-panel sidelights, and a three-light door. The wraparound porch is supported by Tuscan columns, and there is an addition to the rear. |                  |          |      |
| 62.            | 403 MABEL  | QUEEN ANNE       | CA. 1908 | C    |
|                | One-story, irregularly massed cottage with a brick foundation, wood siding, and a steeply gabled, asbestos dutch-lap shingled roof, one cross gable and one chimney. Windows are 1/1 and the entrance has a transom, two-lights-over-one-  |                  |          |      |



United States Department of the Interior  
National Park Service

National Register of Historic Places  
Continuation Sheet

Section number 7 Page 15 - NORTH MAIN DISTRICT, HATTIESBURG, MISS.

panel sidelights, and a wood door. The roof of the partial-width porch is supported by boxed columns

63. **404 MABEL** **CRAFTSMAN** **CA. 1926** **C**  
One-story, irregularly massed residence with a brick foundation, wood siding, and a gabled, asphalt-shingled roof. The entrance door has four lights over three panels, and windows are 4/1 double hung. The four-bay, full-width front porch is supported by boxed columns set on brick piers, and there is a shed in the rear.
64. **405 MABEL** **QUEEN ANNE** **CA. 1900** **C**  
One-story, irregularly massed, wood-frame cottage with a masonry foundation, asbestos-shingled walls, and a steeply pitched, gabled, asphalt-shingled roof with one cross gable. The entrance has a transom and two-lights-over-one-panel sidelights, and windows are 1/1 double hung. The partial-width porch is independently roofed and supported by boxed wood columns.
65. **406 MABEL** **CRAFTSMAN** **CA. 1940** **C**  
One-story, wood-frame, symmetrically massed residence with asbestos wall shingles, a shallow hipped asphalt-shingled roof, two cross gables, a four-light/three-panel door, 6/6 double-hung windows, and a partial-width entrance porch.
66. **410 MABEL** **RANCH** **CA. 1950** **NC**  
One-story, picturesquely massed residence on brick foundation, with vinyl and brick walls, a shallow hipped asphalt roof, a cross half-hip, a flush door, metal replacement windows, a small entrance porch, and attached carport.
67. **412 MABEL** **RANCH** **CA. 1960** **NC**  
One-story, simply massed residence on a slab foundation, with brick veneer walls, a gabled asphalt-shingled roof, a solid-core door, metal windows, and an integral carport.
68. **413 MABEL** **CRAFTSMAN** **CA. 1927** **C**  
One-story residence on a brick foundation, with brick walls, a gabled roof with asphalt shingles, one chimney, 1/1 windows, a three-bay front porch supported by brick columns, and an attached carport.
69. **415 MABEL** **CRAFTSMAN** **CA. 1923** **C**  
One-story, irregularly massed, wood-frame bungalow with brick foundation, aluminum siding, gabled asphalt-shingled roof, one chimney, 1/1 double-hung metal replacement windows, and a three-bay partial-width undercut porch supported by Doric columns.



United States Department of the Interior  
National Park Service

National Register of Historic Places  
Continuation Sheet

Section number 7 Page 16 - NORTH MAIN DISTRICT, HATTIESBURG, MISS.

- | Section number | Name   | Style            | CA.      | Code |
|----------------|--|------------------|----------|------|
| 70.            | 416 MABEL  | QUEEN ANNE       | CA. 1900 | C    |
|                | One-story, wood-frame, picturesquely massed cottage with a brick foundation, wood siding, and a steep hipped roof with asphalt shingles and two cross gables and a cross half-hip. Windows are 1/1 double-hung, and the wraparound front porch, supported by wood posts, is partially enclosed.  |                  |          |      |
| 71.            | 417 MABEL  | COLONIAL REVIVAL | CA. 1945 | NC   |
|                | One-story, simply massed, wood-frame residence on a brick foundation, with vinyl siding, a shallow gabled asphalt-shingled roof, a cross gable over the entrance porch supported by metal pilasters, a flush wood door, 1/1 double-hung metal replacement windows, and a side porch supported by a wood post.  |                  |          |      |
| 72.            | 428 MABEL  | QUEEN ANNE       | CA. 1908 | C    |
|                | One-story, picturesquely massed, wood-frame cottage on a brick and concrete block foundation with asbestos wall shingles, a picturesque roof with asphalt-shingles and one chimney, and three cross gables. Windows are 1/1 double hung, and the entrance has a transom, two-light sidelights, and a three-light flush wood door. The wraparound porch is independently roofed and supported by Doric columns, and there is an addition to the side. |                  |          |      |
| 73.            | 430 MABEL  | QUEEN ANNE       | CA. 1908 | C    |
|                | One-story, picturesquely massed, wood-frame residence with a brick foundation and walls of wood, brick and asbestos shingles. The steeply pitched, pyramidal roof is asphalt shingled and has two cross gables. Windows are 1/1 double hung, and the entrance has a single light in a flush wood door. Boxed columns support an independently roofed and partially enclosed porch, and a carport has been added.                                     |                  |          |      |
| 74.            | 431 MABEL  | QUEEN ANNE       | CA. 1908 | C    |
|                | One-story, symmetrically massed, wood-frame cottage on a brick foundation, with wood siding, a hipped, asphalt-shingled roof, a gabled dormer, entrance with transom, three-lights-over-one-panel sidelights, one-light-over-one-panel door, 1/1 double-hung windows, and a three-bay, full-width front porch with an independent roof supported by iron pilasters.  |                  |          |      |
| 75.            | 433 MABEL  | CRAFTSMAN        | CA. 1927 | C    |
|                | One story, wood-frame, irregularly massed residence on a brick foundation, with asbestos siding, a shallow asphalt-shingled roof, one cross gable, five-light sidelights, 6/6 double-hung windows, an entrance porch supported by iron pilasters, an attached carport, and an addition to the side.  |                  |          |      |



United States Department of the Interior  
National Park ServiceNational Register of Historic Places  
Continuation SheetSection number 7 Page 17 - NORTH MAIN DISTRICT, HATTIESBURG, MISS.

- 
- | Section number   | Name      | Style            | CA.      | Condition |
|--|-----------|------------------|----------|-----------|
| 76.  | 434 MABEL | CRAFTSMAN        | CA. 1917 | C         |
| One-story, wood-frame, irregularly massed bungalow on a brick foundation, with wood siding, a pyramidal roof with one chimney, a half-hip, four-part dormer, an entrance with transom, single-light-over-panel sidelight, one-light/three-panel door, boxed eaves, 1/1 double-hung windows, and a partial-width porch integral with carport. |           |                  |          |           |
| 77.  | 435 MABEL | CRAFTSMAN        | CA. 1917 | C         |
| One-story, wood-frame, irregularly massed bungalow with asbestos siding, shallow gabled asphalt-shingled roof with exposed rafter ends, 4/1 double-hung windows, partial-width front porch supported by metal pilasters, and an addition to the rear.  |           |                  |          |           |
| 78.  | 436 MABEL | COLONIAL REVIVAL | CA. 1945 | NC        |
| One-story, wood-frame, simply massed residence on a brick foundation, with asbestos siding, a shallow gabled, asphalt-shingled roof with a cross gable over the entrance porch supported by metal pilasters, a six-panel door, and 6/6 and 8/8 double-hung windows.  |           |                  |          |           |
| 79.  | 438 MABEL | NO STYLE         | CA. 1945 | NC        |
| One-story, wood-frame, symmetrically massed residence on a brick foundation, with drop siding, a shallow gabled roof with asphalt shingles, a four-light/three-panel door, 6/6 double-hung windows, and an entrance porch.   |           |                  |          |           |
| 80.  | 440 MABEL | CRAFTSMAN        | CA. 1940 | C         |
| One-story, wood-frame, symmetrically massed residence with brick foundation, asbestos siding, gabled asphalt-shingled roof, three-light door, 4/1 double-hung windows, full-width, three-bay undercut porch supported on iron pilasters, one chimney, exposed rafters, and a carport and an addition to the rear.                            |           |                  |          |           |
| 81.  | 441 MABEL | CRAFTSMAN        | CA. 1935 | C         |
| One-story, wood-frame residence on a brick foundation, with asbestos siding, a gabled, asphalt-shingled roof, a two-light/four-panel door, 6/6 double-hung windows, an undercut, partial-width front porch supported by boxed wood columns and screened in, and a rear attached carport.   |           |                  |          |           |
| 82.  | 442 MABEL | TRADITIONAL      | CA. 1976 | NC        |
| One-story, wood-frame, symmetrically massed residence on a brick foundation, with wood and brick walls, a shallow gabled asphalt-shingled roof, a six-panel door, 2/2 double-hung aluminum windows, and an entrance porch that is independently roofed and supported by wood posts.  |           |                  |          |           |



United States Department of the Interior  
National Park Service

National Register of Historic Places  
Continuation Sheet

Section number 7 Page 18 - NORTH MAIN DISTRICT, HATTIESBURG, MISS.

- | Section Number   | Address  | Style                   | Year     | Category |
|--|----------|-------------------------|----------|----------|
| 83.  | 848 MAIN | TUDOR                   | CA. 1921 | C        |
| <p>OLD HATTIESBURG HIGH SCHOOL (ARCHITECT: R.E. LEE OF HATTIESBURG) [NR 1987]<br/>Four-story, brick-veneer high school with terra-cotta trim. The hip roof has wall gables and an embattlement for a parapet. Windows are 9/9 double-hung, generally grouped in threes. There is a main entrance and an entrance for boys and girls.</p>   |          |                         |          |          |
| 84.  | 853 MAIN | CRAFTSMAN               | CA. 1900 | C        |
| <p>One-story, wood-frame bungalow, oriented perpendicular to the street. The gable roof has exposed purlins, two chimneys, and half-timbering in the gable end. The full-width front porch is supported by brick columns and wraps both the north and south elevations. The house has projections on both north and south elevations, and has been enlarged on the rear. 1/1 double-hung windows flank the centrally located entrance that has sidelights, a transom and 6-panel door. [Photo 6 of 27]</p> |          |                         |          |          |
| 85.  | 859 MAIN | MEDITERRANEAN/CRAFTSMAN | CA. 1900 | C        |
| <p>One-story, wood-frame residence, oriented perpendicular to the street. The hipped roof has boxed eaves and modillions. The full-width, three-bay front porch is supported by four boxed columns, between which spans a wood railing. The centrally located front door has sidelights, a transom, and a 3-lights/1-panel door. The typical window is 1/1 double hung. There is an open porch on the north elevation. [Photo 7 of 27]</p>   |          |                         |          |          |
| 86.  | 862 MAIN | OTHER                   | CA. 1972 | NC       |
| <p>Two modern apartments of concrete block and brick, with flat roof, aluminum windows, and flush wood doors.</p>  |          |                         |          |          |
| 87.  | 867 MAIN | QUEEN ANNE              | CA. 1900 | C        |
| <p>Two-story, wood-frame residence with steep hip roof and cross gables. The one-story, five-bay front porch with balustrade wraps down the north and south elevations and terminates at a 6' x 15' projection on each side. The typical window is 1/1 double hung; the entrance has a single-light transom, 1/1 sidelights, and 6-lights/1-panel door. The rear of the house has been enlarged. [Photo 8 of 27]</p>   |          |                         |          |          |
| 88.  | 901 MAIN | COLONIAL REVIVAL        | CA. 1952 | NC       |
| <p>Two-story, brick-veneer residence with gable roof, two chimneys and three dormers. The symmetrically placed windows on the street facade are 9/9 double hung. The centrally located entrance has 8-lights/1-panel sidelights, a fanlight transom, and a 6-panel door. The opening above the entrance has a small balcony. There is a carport on the south elevation.</p>  |          |                         |          |          |



United States Department of the Interior  
National Park ServiceNational Register of Historic Places  
Continuation SheetSection number 7 Page 19 - NORTH MAIN DISTRICT, HATTIESBURG, MISS.

- 
- |     |   |                         |                 |           |
|-----|---|-------------------------|-----------------|-----------|
| 89. | <b>906 MAIN</b>   | <b>QUEEN ANNE</b>       | <b>CA. 1900</b> | <b>C</b>  |
|     | One-story cottage with steep gable roof, cross gable over a projection with clipped corners, a wraparound, independently roofed front porch supported by boxed columns set on piers. Typical windows are 1/1 double-hung, and the entrance has 3-lights/1-panel sidelights, a single-light transom, and a 15-light door.  |                         |                 |           |
| 90. | <b>911 MAIN</b>   | <b>COLONIAL REVIVAL</b> | <b>CA. 1952</b> | <b>NC</b> |
|     | One-story, wood-frame residence, symmetrically massed, oriented perpendicular to the street, with boxed eaves, two chimneys, 1/1 double-hung windows, and entrances with sidelights and transom. On the rear is a recessed porch.   |                         |                 |           |
| 91. | <b>912 MAIN</b>   | <b>QUEEN ANNE</b>       | <b>CA. 1900</b> | <b>C</b>  |
|     | One-story, wood-frame cottage with steep hip roof, two street-facing cross gables, boxed eaves, and a partial-width front porch.  |                         |                 |           |
| 92. | <b>915 MAIN</b>   | <b>CRAFTSMAN</b>        | <b>CA. 1928</b> | <b>C</b>  |
|     | One-story, brick-veneer bungalow, oriented perpendicular to the street, with gable roof, boxed eaves, and one chimney. The partial-width, enclosed front porch is created from the main roof and is supported on brick piers.   |                         |                 |           |
| 93. | <b>918 MAIN</b>   | <b>QUEEN ANNE</b>       | <b>CA. 1900</b> | <b>C</b>  |
|     | One-story, wood-frame cottage with hip roof and two chimneys, boxed eaves, and two street-facing cross gables. The independently roofed, full-width front porch originally wrapped down the south side of the house, but has been enclosed and enlarged. Porch columns seem to date from the late teens or early 1920s, when the U-shaped rear was enclosed, incorporating a former porch.                      |                         |                 |           |
| 94. | <b>920 MAIN</b>   | <b>PRAIRIE</b>          | <b>CA. 1920</b> | <b>C</b>  |
|     | Two-story, stucco-on-tile residence with hip roof, boxed eaves, and two chimneys. The 9/9 double-hung windows are grouped together. The entrance has 10-light sidelights and two 4-light and one 8-light transoms. There is a screened porch and stairs on the rear of the house. [Photo 9 of 27]   |                         |                 |           |
| 95. | <b>923 MAIN</b>   | <b>CRAFTSMAN</b>        | <b>CA. 1900</b> | <b>C</b>  |
|     | Two-story, wood-frame residence with multiple hip roofs and boxed eaves. The full-width, one-story front porch wraps down the south elevation to a projecting mass, and is supported on non-original pilasters. In the center is a two-story portion of the porch, which is glass-enclosed. The typical window is 1/1 double-hung. The entrance has 1/1 sidelights, a stained-glass transom, and a single oval. |                         |                 |           |



United States Department of the Interior  
National Park ServiceNational Register of Historic Places  
Continuation SheetSection number 7 Page 20 - NORTH MAIN DISTRICT, HATTIESBURG, MISS.

- 
- | Section number  | Address      | Style            | CA.      | Rating |
|---|--------------|------------------|----------|--------|
| 96.   | 927 MAIN     | COLONIAL REVIVAL | CA. 1908 | C      |
| Two-story, wood-frame residence with steep, complex roof with boxed eaves, one dormer, two chimneys, and an addition on the south side. The projecting portion of the house has a bay with leaded-glass window. The independently roofed front porch originally wrapped the south side. The entrance has a single-light transom, sidelight, and a door. A carport has been added to the south side, and a rear porch has been enclosed. On the north elevation is a projecting bay. |              |                  |          |        |
| 97.   | 930 MAIN     | QUEEN ANNE       | CA. 1936 | C      |
| Two-story, symmetrically massed, brick-veneer apartment building with gable roof, two cross gables, and boxed eaves. A small, gabled entrance porch is centered in the street facade. The typical window is 1/1 double-hung. On the north elevation, a carport has been added.  |              |                  |          |        |
| 98.   | 938 MAIN     | NO STYLE         | CA. 1900 | NC     |
| One and a half-story cottage, significantly enlarged to the south. The gable roof has two cross gables, two wall dormers with shed roofs, boxed eaves, and one chimney. The entrance porch is independently roofed, supported on cast-iron pilasters. Windows vary greatly. The rear of the house has also been greatly altered.  |              |                  |          |        |
| 99.   | 939 MAIN     | NO STYLE         | CA. 1974 | NC     |
| One-story, brick-veneer building on slab with false mansard and storefront doors and windows.   |              |                  |          |        |
| 100.  | 1000 MAIN    | OTHER            | CA. 1978 | NC     |
| One-story, brick-veneer convenience store with flat roof and storefront window and door system. There is a large carport over the gas pumps.  |              |                  |          |        |
| 101.  | 1007-09 MAIN | NO STYLE         | CA. 1913 | NC     |
| Two wood-frame residences, substantially enlarged and converted to commercial purposes. The 1915 and 1925 Sanborn maps show the original rear portion had a one-story, full-width front porch. The front portion, added about 1933, is stuccoed and has plate glass windows and pairs of 15-light doors.  |              |                  |          |        |
| 102.  | 1012 MAIN    | CRAFTSMAN        | CA. 1902 | C      |
| Two-story, concrete-block building with steep hip roof, clipped eaves, and a balcony on the second floor on the street facade. Street-front windows are 1/1 double-hung with transoms on the first floor; second-floor windows are boarded up. The front door is of glass and wood. A one-story addition with a lean-to roof is on the south elevation.   |              |                  |          |        |



United States Department of the Interior  
National Park Service

National Register of Historic Places  
Continuation Sheet

Section number 7 Page 21 - NORTH MAIN DISTRICT, HATTIESBURG, MISS.

- | Section number | Address      | Style            | CA.      | Code | Description   |
|----------------|--------------|------------------|----------|------|---|
| 103.           | 1014-16 MAIN | CRAFTSMAN        | CA. 1927 | C    | One-story, brick commercial building with non-original shed roof and canopy over the street.  |
| 104.           | 1015 MAIN    | NO STYLE         | CA. 1912 | NC   | One-story, wood-frame building with metal roof, boxed eaves, and decorative roof vents. The typical window is 1/1 aluminum-frame. The front has been substantially remodeled since 1961, especially with the creation of a carport and the introduction of a garage door.   |
| 105.           | 1019 MAIN    | QUEEN ANNE       | CA. 1900 | C    | One-story, wood-frame cottage, oriented perpendicular to the street. The hip roof has two cross gables, boxed eaves and one chimney. The independently roofed entrance porch is supported by non-original cast-iron pilasters, and abuts a street-facing projection with clipped corners and a window in each face. The original window type was 4/4 double hung. The entrance has a three-panel door, 3-lights/1-panel sidelights, and a 2-light transom. A rear porch was enclosed between 1915 and 1925, and an addition made between 1925 and 1931. |
| 106.           | 1020 MAIN    | NO STYLE         | CA. 1950 | NC   | One-story, concrete brick and block apartment building with built-up roof, aluminum double-hung windows, and flush wood doors.  |
| 107.           | 1027 MAIN    | QUEEN ANNE       | CA. 1900 | C    | One-story, wood-frame cottage, clad in vinyl siding, with hip roof, two street-facing cross gables and boxed eaves. Windows are all metal replacements, with security bars. The entrance porch wraps onto the north elevation, and is independently roofed, supported by box columns set on masonry piers.  |
| 108.           | 1028 MAIN    | COLONIAL REVIVAL | CA. 1900 | C    | Well-detailed, two and a half story residence. The steep hip roof has two chimneys, seven dormers, and boxed eaves. The entrance porch is circular on the south, and has paired Ionic columns and wood railings on the first and second levels. There is also a north porch. The house has been enlarged to the rear. Window types are varied; the entrance has paired doors, sidelights and a transom. [Photo 10 of 27]  |



United States Department of the Interior  
National Park Service

National Register of Historic Places  
Continuation Sheet

Section number 7 Page 22 - NORTH MAIN DISTRICT, HATTIESBURG, MISS.

- | Section number   | Address                                 | Style         | CA.      | Code |
|--|---|---------------|----------|------|
| 109.   | 1108 MAIN                               | QUEEN ANNE    | CA. 1900 | C    |
| <p>One and a half story wood-frame cottage with steep hip roof, two chimneys, one dormers and cross gables. The full-width front porch is independently roofed and wraps the south elevation, where it abuts a 6x17-foot projection. The rear of the house has been enlarged by enclosing a porch. A shallow, one-foot-deep projection is on the north elevation. Windows are typically 1/1; the slightly recessed entrance has a 1-light/3-panel door, single-light sidelights, and a two-light transom, and to the north of the entrance is a bay window. [Photo 11 of 27]</p> |   |               |          |      |
| 110.   | 1111 MAIN<br>MAIN STREET BAPTIST CHURCH | RENAISSANCE   | CA. 1912 | C    |
| <p>Large brick church complex which has evolved since 1912. The oldest portion has a three-bay portico, colossal Corinthian columns, and art glass in the various types of windows. The more recent portions are in keeping with the older style. The new worship area was built in 1966. [Photo 12 of 27]</p>   |   |               |          |      |
| 111.   | 1114 MAIN                               | QUEEN ANNE    | CA. 1900 | C    |
| <p>Two-story, wood-frame residence with hip roof, boxed eaves, one chimney, and cross half-hip over south end projection. The one-story entrance porch is supported by Doric columns and wraps the northeast corner and extends down the north elevation. On the south elevation is a projecting bay, and on the rear is an enclosed porch. The typical window is 1/1 double-hung. The entrance has sidelights, a transom, and a 28-lights/2-panel door.</p>   |   |               |          |      |
| 112.   | 1120 MAIN                               | QUEEN ANNE    | CA. 1900 | C    |
| <p>One-story, wood-frame residence with steep hip roof, two chimneys, boxed eaves, and two cross gables. Ionic columns support the independently roofed front porch, which wraps on the south elevation where it terminates at a shallow projection. On the rear of the house is an enclosed porch. The typical window is 1/1 double-hung, and the entrance has a single-light transom above a single-light/single-panel door.</p>   |   |               |          |      |
| 113.   | 1122 MAIN                               | MEDITERRANEAN | CA. 1904 | C    |
| <p>Two-story, brick residence with hip roof, deep overhangs with shallow brackets, one dormer, and two chimneys. An entrance porch supported by brick columns wraps the south elevation; porches are also on the north and rear elevations. The typical window is 1/1 double hung. [Photo 13 of 27]</p>  |   |               |          |      |
| 114.   | 1208 MAIN                               | CRAFTSMAN     | CA. 1926 | NC   |
| <p>One-story, brick-veneer bungalow, oriented perpendicular to the street. The gable roof has boxed eaves, one chimney, and a gable-end attic vent, and extends over an enclosed porch. Original windows are 4/1 double-hung. The present non-original entrance has a flush wood door with three lights.</p>   |   |               |          |      |



United States Department of the Interior  
National Park Service

National Register of Historic Places  
Continuation Sheet

Section number 7 Page 23 - NORTH MAIN DISTRICT, HATTIESBURG, MISS.

- | Section number  | Address   | Style      | CA.      | Condition |
|---|-----------|------------|----------|-----------|
| 115.  | 1209 MAIN | NO STYLE   | CA. 1908 | C         |
| One-story cottage with gable roof and full-width front porch with non-original details and an independent roof supported by six tapered, boxed wood columns. Windows are typically 2/2 double-hung, and the two entrances both have transoms, but variant doors. A rear wing projects on the north.   |           |            |          |           |
| 116.  | 1210 MAIN | CRAFTSMAN  | CA. 1926 | C         |
| One-story, brick-veneer residence, oriented perpendicular to the street. The shallow gable roof runs the length of the house and projects over the partial-width entrance porch which is supported by brick columns. Windows are typically 4/1 double-hung. A carport has been added on the north elevation, to the rear, abutting the garage.  |           |            |          |           |
| 117.  | 1212 MAIN | QUEEN ANNE | CA. 1900 | NC        |
| One-story, wood-frame cottage, oriented perpendicular to the street. The gable roof over the front house mass has a ridge running parallel to the street, with jerkin-head ends, two cross gables, one chimneys, and boxed eaves. The partial-width entrance porch is independently roofed, supported by Ionic columns set on brick piers. The typical window is 1/1 double-hung. The entrance is centered in the porch bay closest to the north-end projection. A carport has been added onto the rear of the house. |           |            |          |           |
| 118.  | 1222 MAIN | OTHER      | CA. 1964 | NC        |
| One-story, concrete block and brick modern commercial store with flat roof, storefront doors and windows, and back-lit commercial signs.  |           |            |          |           |
| 119.  | 1223 MAIN | CRAFTSMAN  | CA. 1900 | C         |
| This large, two-story, wood-frame residence likely underwent some stylistic changes in the 1920s in an attempt to make it look Tudor. The steep, picturesque roof has one concrete-block chimney, and a very strong gable roof over a projecting portion of the full-width front porch which wraps both the north and south corners. The porch is two stories only in the projecting center portion. Windows are 1/1 double-hung, and the unpretentious entrance has a transom. [Photo 14 of 27]                      |           |            |          |           |
| 120.  | 1229 MAIN | OTHER      | CA. 1986 | NC        |
| One-story, concrete-block commercial building with slab foundation, flat roof, and storefront windows and doors.  |           |            |          |           |
| 121.  | 1300 MAIN | OTHER      | CA. 1986 | NC        |
| One-story fast-food outlet with false metal mansard roof and storefront windows and doors.  |           |            |          |           |



United States Department of the Interior  
National Park Service

National Register of Historic Places  
Continuation Sheet

Section number 7 Page 24 - NORTH MAIN DISTRICT, HATTIESBURG, MISS.

- | Section number   | Address      | Style            | CA.      | Rating |
|--|--------------|------------------|----------|--------|
| 122.   | 1301 MAIN    | COLONIAL REVIVAL | CA. 1904 | C      |
| Two-story, concrete-block residence with picturesque roof, boxed eaves, and two concrete-block chimneys. The full-width, one-story front porch slightly projects in the center where it is two stories, wraps down the south elevation, and has Ionic columns on the second floor and concrete-block columns on the first. The typical window is 1/1 double-hung. The entrance has a 1-light/1-panel door, a single-light transom, and 3-lights/1-panel sidelights. There is a shallow projection on the north elevation. The rear of the house has been slightly enlarged with a utility room and screened porch. |              |                  |          |        |
| 123.   | 1302 MAIN    | CRAFTSMAN        | CA. 1917 | C      |
| This one-story, wood-frame residence reflects the change in taste from the cottage the bungalow in the second decade of the twentieth century. The gable roof has exposed rafter ends, cross gables, extension gables, and one chimney. The full-width front porch has boxed columns set on brick piers and is screen-enclosed. Typical windows are 12/1 double-hung, and the entrance door has nine lights over three panels. The house projects four feet on the north elevation, and a carport has been recently added.   |              |                  |          |        |
| 124.   | 1303-05 MAIN | NO STYLE         | CA. 1955 | NC     |
| One-story, wood-frame, board & batten building, oriented parallel to the street, with shallow gable roof with exposed rafter ends, metal windows, and small porches over both entrances with flush wood doors.   |              |                  |          |        |
| 125.   | 1306 MAIN    | CRAFTSMAN        | CA. 1927 | C      |
| One-story, wood-frame bungalow, oriented perpendicular to the street. The shallow gable roof has exposed rafter ends, knee braces, and one chimney, and projects over the partial-width, screened front porch that is supported by box columns on brick piers. The typical window is 4/1 double-hung, and the front door has four lights over three panels. A breezeway ties the rear of the house to a carport.   |              |                  |          |        |
| 126.   | 1315 MAIN    | CRAFTSMAN        | CA. 1920 | C      |
| One and a half story wood frame bungalow with dutch-lap asbestos shingles, a gabled dormer, exposed rafter ends, and one chimney. The full-width front porch wraps the south corner. On the north elevation is an enclosed porch and an addition added after 1961. The rear appears to have been enlarged, and has a small screened porch; a small projection on the south elevation was added between 1925 and 1931. The typical window is 6/1 double-hung, and the front door has eight lights.  |              |                  |          |        |
| 127.   | 1319 MAIN    | TRADITIONAL      | CA. 1975 | NC     |
| Two-story, brick veneer and board-and-batten commercial building with 8/8 aluminum windows and six-panel wood doors.   |              |                  |          |        |



United States Department of the Interior  
National Park Service

National Register of Historic Places  
Continuation Sheet

Section number 7 Page 25 - NORTH MAIN DISTRICT, HATTIESBURG, MISS.

- | Section number  | Address   | Style            | CA.      | Grade |
|---|-----------|------------------|----------|-------|
| 128.  | 1320 MAIN | COLONIAL REVIVAL | CA. 1900 | C     |
| One-story, wood-frame cottage with independently roofed, wraparound front porch, boxed eaves, two street-facing cross gables, and two chimneys. The typical window is 1/1 double-hung, and the entrance has a fanlight transom, a 3-lights/1-panel sidelight, and a single-light door. On the rear and south end is a wing; on the north elevation, the porch abuts a projection.                   |           |                  |          |       |
| 129.  | 1331 MAIN | QUEEN ANNE       | CA. 1900 | C     |
| One-story, wood-frame residence with gable roof, partial-width front porch supported by metal pilasters, 15/1 double-hung windows and an 8-panel front door. The street elevation has been partially veneered. Since 1961, a carport and closed porch have been added to the southeast corner of the house.   |           |                  |          |       |
| 130.  | 1400 MAIN | COLONIAL REVIVAL | CA. 1900 | C     |
| One-story, wood-frame cottage with steep hip roof, three cross gables, boxed eaves, independently roofed, wraparound entrance porch supported by Tuscan columns, 1/1 double-hung windows, entrance with oval-light door and transom, shallow projections on the north and south elevations, and an enclosed rear porch. [Photo 15 of 27]  |           |                  |          |       |
| 131.  | 1406 MAIN | CRAFTSMAN        | CA. 1908 | C     |
| One-story, wood-frame cottage which has been remodeled several times. The wraparound porch appears to date from the 1920s; the roof over the living portion appears very recent. The typical original window is 1/1 double-hung; the window in the projection has a stained-glass transom.  |           |                  |          |       |
| 132.  | 1407 MAIN | CRAFTSMAN        | CA. 1942 | C     |
| One-story, wood-frame bungalow, oriented perpendicular to the street. The nearly full-width front porch is independently roofed, supported by four wood columns. The entrance is centered in the middle porch bay and is flanked by pairs of 4/1 double-hung windows. On the rear is an open porch.   |           |                  |          |       |
| 133.  | 1408 MAIN | QUEEN ANNE       | CA. 1908 | C     |
| One-story, wood-frame cottage with one dormer, one chimney and boxed eaves. The full-width front porch is independently roofed, supported by boxed wood columns, and wraps down the south elevation to a projection. The typical window is 1/1 double-hung; the entrance has a single light over a decorative panel, and a single light transom. Across the rear of the house is an enclosed porch. |           |                  |          |       |



United States Department of the Interior  
National Park ServiceNational Register of Historic Places  
Continuation SheetSection number 7 Page 26 - NORTH MAIN DISTRICT, HATTIESBURG, MISS.

- 
- | Section number | Address   | Style            | Date     | Rating |
|----------------|---|------------------|----------|--------|
| 134.           | 1409 MAIN   | QUEEN ANNE       | CA. 1900 | C      |
|                | One and a half story, wood-frame cottage, clad in asbestos siding. The gable roof has exposed rafter ends, deep overhangs, a cross gable and one chimney. The entrance porch is undercut from the main roof and abuts a projecting bay with clipped corners. The entrance porch has replacement Craftsman boxed columns set on brick piers. The typical window is 1/1 double-hung, and the front door has a single light. A carport has been added on the rear. |                  |          |        |
| 135.           | 1410 MAIN   | CRAFTSMAN        | CA. 1920 | C      |
|                | One-story, brick-veneer bungalow, oriented perpendicular to the street. There is a small entrance porch on the center of the facade, and a screened porch on the south side of the elevation. The gable roof, running parallel to the street, is intersected by a hip roof. There is one chimney, the windows are typically 4/1, and the entrance door has fifteen lights. The rear of the house was enlarged between 1931 and 1962.                            |                  |          |        |
| 136.           | 1412 MAIN   | RENAISSANCE      | CA. 1920 | C      |
|                | One-story, wood-frame bungalow, oriented perpendicular to the street, with partial-width front porch supported by Ionic columns, one chimney, 8/1 double-hung windows, and a fifteen-light door.  |                  |          |        |
| 137.           | 1413 MAIN   | COLONIAL REVIVAL | CA. 1936 | C      |
|                | One-story, wood-frame residence with gable roof, boxed eaves, one chimney, and an undercut entrance porch with pairs of boxed columns. The typical window is 6/6 double-hung, and the entrance has a fanlight transom, 4-lights/1-panel sidelights, and a wood door.  |                  |          |        |
| 138.           | 1414 MAIN   | CRAFTSMAN        | CA. 1923 | C      |
|                | One-story bungalow with gable roof, one chimney, exposed rafter ends, and partial-width front porch supported by boxed columns set on brick piers.  |                  |          |        |
| 139.           | 112 MELROSE   | CRAFTSMAN        | CA. 1940 | C      |
|                | One-story, wood-frame bungalow with gable roof, exposed rafter ends, and a cross gable over the entrance porch which is supported by boxed columns with decorative cast iron.   |                  |          |        |
| 140.           | 124 MELROSE   | CRAFTSMAN        | CA. 1928 | C      |
|                | One-story, wood-frame, four-unit apartment building, symmetrically massed, parallel to the street, with shallow gable roof, two chimneys, paired 4/1 double-hung windows with false blinds, and three entrances off a one-story porch.  |                  |          |        |



United States Department of the Interior  
National Park ServiceNational Register of Historic Places  
Continuation SheetSection number 7 Page 27 - NORTH MAIN DISTRICT, HATTIESBURG, MISS.

- 
- | Section number   | Address    | Style      | CA.  | Code |
|--|------------|------------|------|------|
| 141.   | 101 MILLER | QUEEN ANNE | 1905 | NC   |
| Two-story, wood-frame residence, substantially remodeled, with hip roof, boxed eaves, and cross gable over street-facing projection abutting a two-story, independently roofed, non-original entrance porch, non-original aluminum windows, and flush wood door. There is a large, one-story addition to the rear, and an open porch.  |            |            |      |      |
| 142.   | 103 MILLER | CRAFTSMAN  | 1925 | C    |
| One-story, wood-frame bungalow, oriented perpendicular to the street, with shallow gable roof, exposed rafter ends, knee braces, partial-width screened front porch supported on boxed columns set on masonry piers. The typical window is 4/1 double hung, and the front door is glass and wood.  |            |            |      |      |
| 143.   | 105 MILLER | CRAFTSMAN  | 1923 | C    |
| One-story, wood-frame bungalow, oriented perpendicular to the street, with shallow gable roof, exposed rafter ends, knee braces, one chimney, partial-width, screened entrance porch supported on boxed columns, 4/1 double-hung windows, a 6-light front door, a four-foot deep recess on the west elevation, and a utility room and screened porch on the rear.  |            |            |      |      |
| 144.   | 118 MILLER | CRAFTSMAN  | 1918 | C    |
| One and a half story, stuccoed bungalow, oriented perpendicular to the street. The steep gable roof has exposed rafter ends, knee braces, and four nine-light, gable-end windows. The full-width front porch wraps the east elevation and is independently roofed, supported by boxed columns set on masonry piers. Street-facing windows are 12/1 double-hung, and the entrance has 10-lights/2-panel sidelights, a four-light transom and six-panel door. There is a shallow projection on both the east and west elevations. [Photo 16 of 27] |            |            |      |      |
| 145.   | 122 MILLER | QUEEN ANNE | 1900 | C    |
| One-story, wood-frame cottage, clad in asbestos siding, oriented perpendicular to the street. The picturesque roof has ridge tiles, two chimneys, one dormer, and deep, boxed eaves with shallow brackets. The wraparound porch appears to have been remodeled, and abuts the street-facing projection with clipped corners. The typical window is 1/1 double hung, and the entrance has beveled glass. There is a projection on the east and west elevations.   |            |            |      |      |
| 146.   | 202 MILLER | RANCH      | 1942 | C    |
| One-story, wood-frame residence with asbestos siding, gable roof, an independently roofed front porch supported by cast-iron pilasters abutting a street-facing projection, and 6/6 double-hung windows.   |            |            |      |      |



United States Department of the Interior  
National Park Service

National Register of Historic Places  
Continuation Sheet

Section number 7 Page 28 - NORTH MAIN DISTRICT, HATTIESBURG, MISS.

- | Section number | Address    | Style                   | CA.      | Rating | Description   |
|----------------|------------|-------------------------|----------|--------|---|
| 147.           | 227 MILLER | QUEEN ANNE              | CA. 1900 | C      | One-story, wood-frame bungalow with steep gable roof, boxed eaves, cross gable over street-facing projecting bay abutting a remodeled entrance porch with independent roof supported by paired boxed columns set on masonry piers, 2/2 double-hung windows with false blinds, and an entrance with 3-lights/1-panel sidelights, single-light transom, and etched single-light/three-panel door. |
| 148.           | 301 MILLER | QUEEN ANNE              | CA. 1900 | C      | One-story, wood-frame cottage with steep, picturesque roof, boxed eaves, screened-in wraparound porch supported by non-original boxed wood columns, 1/1 double-hung windows, and shallow bay on the west elevation.   |
| 149.           | 302 MILLER | CRAFTSMAN               | CA. 1919 | C      | One-story, wood-frame bungalow with gable roof, knee braces, gable-end attic vent, and paired 6-light attic windows, an undercut full-width, screened front porch, gable-end half-timbering, an entrance with 5-light sidelights, a 3-light transom, and 15-light door, and a small rear porch.   |
| 150.           | 304 MILLER | CRAFTSMAN               | CA. 1920 | C      | One-story, wood-frame bungalow with gable roof, exposed rafter ends, knee braces, street-facing projection abutting a screened porch set on boxed wood columns, 4/1 double-hung windows, entrance with transom and single-light door, and a rear porch.   |
| 151.           | 305 MILLER | MEDITERRANEAN/CRAFTSMAN | CA. 1917 | C      | One-story, wood-frame residence with pyramidal roof, cross half-hip, boxed eaves, one dormer, a wraparound, independently roofed front porch supported by boxed columns, a non-original carport on the east elevation, a screened porch on the rear elevation, 1/1 double-hung windows, and a single-light/four-panel door.   |
| 152.           | 306 MILLER | NO STYLE                | CA. 1955 | NC     | One-story, wood-frame bungalow, clad in asbestos siding, with gable roof, exposed rafter ends, 4/1 double-hung windows, 4-lights/3-panel front door, small entrance porch supported by metal pilasters, and a carport on the west elevation.  |
| 153.           | 307 MILLER | QUEEN ANNE/NO STYLE     | CA. 1908 | NC     | Two-story, wood-frame residence, substantially altered and enlarged. The house is oriented perpendicular to the street, clad in vinyl siding, and has a gable roof, aluminum windows, 3-lights/3-panel entrance door, and a full-width, one-story front porch.  |



United States Department of the Interior  
National Park ServiceNational Register of Historic Places  
Continuation SheetSection number 7 Page 29 - NORTH MAIN DISTRICT, HATTIESBURG, MISS.

- 
- |      |   |                            |                 |           |
|------|---|----------------------------|-----------------|-----------|
| 154. | <b>308 MILLER</b>   | <b>CRAFTSMAN</b>           | <b>CA. 1942</b> | <b>C</b>  |
|      | One-story, wood-frame bungalow with square plan, shallow gable roof, and a small cross gable that forms the entrance porch, supported on metal pilasters, 3/1 double-hung windows, 3-lights/3-panel front door, and east-end screened porch.                                  |                            |                 |           |
| 155. | <b>310 MILLER</b>   | <b>NO STYLE</b>            | <b>CA. 1950</b> | <b>NC</b> |
|      | One-story, wood-frame residence, oriented perpendicular to the street, with gable roof, partial-width front porch, and 6/6 double-hung windows.   |                            |                 |           |
| 156. | <b>311 MILLER</b>   | <b>RANCH</b>               | <b>CA. 1955</b> | <b>NC</b> |
|      | One-story, wood-frame house, oriented parallel to the street, with small entrance porch, 2/2 aluminum windows, three-light flush wood door, and incorporated garage.  |                            |                 |           |
| 157. | <b>313 MILLER</b>   | <b>CRAFTSMAN</b>           | <b>CA. 1923</b> | <b>C</b>  |
|      | One-story, wood-frame bungalow, oriented perpendicular to the street, with shallow hip roof, exposed rafter ends, a two-bay entrance porch undercut from the main roof, 1/1 double-hung windows, and one-light/three-panel front door.  |                            |                 |           |
| 158. | <b>315 MILLER</b>   | <b>QUEEN ANNE/NO STYLE</b> | <b>CA. 1908</b> | <b>NC</b> |
|      | One-story residence, significantly altered.   |                            |                 |           |
| 159. | <b>400 MILLER</b>   |                            |                 |           |
|      | deleted   |                            |                 |           |
| 160. | <b>401 MILLER</b>   | <b>COLONIAL REVIVAL</b>    | <b>CA. 1917</b> | <b>C</b>  |
|      | One-story, wood-frame, picturesquely massed residence with brick pier foundation, wood siding, a gabled asphalt-shingled roof with one cross gable and a chimney, a single-light/two-panel door, 1/1 double-hung windows, a partial-width entrance porch, and a rear carport. |                            |                 |           |
| 161. | <b>402 MILLER</b>   |                            |                 |           |
|      | deleted   |                            |                 |           |



United States Department of the Interior  
National Park ServiceNational Register of Historic Places  
Continuation SheetSection number 7 Page 30 - NORTH MAIN DISTRICT, HATTIESBURG, MISS.

- 
162. **403 MILLER** **MEDITERRANEAN** **CA. 1915** **C**  
One-story, symmetrically massed, wood-frame residence on brick piers, with drop siding, hipped roof with asbestos shingles, half-hip dormer with three nine-light sash, a one-light/three-panel door with transom, two-light sidelights, and a five-bay full-width front porch supported on Tuscan columns and independently roofed.
163. **404 MILLER**  
deleted
164. **405 MILLER** **COLONIAL REVIVAL** **CA. 1945** **NC**  
One-story wood-frame residence, oriented parallel to the street, with asbestos wall shingles, gabled roof with asphalt shingles and a cross gable forming a partial-width front porch, supported by metal pilasters, 8/8 double-hung windows, and a side carport.
165. **405-1/2 MILLER** **CRAFTSMAN** **CA. 1940** **C**  
Two-story double, wood-frame residence clad with asbestos wall shingles. The shallow pitched roof has asphalt shingles, exposed rafter ends, and two six-light hipped dormers. The door has six-lights over three panels, and windows are paired and 6/6 double-hung. The partial-width porch has boxed columns.
166. **406 MILLER**  
deleted
167. **407 MILLER** **CRAFTSMAN** **CA. 1940** **C**  
One-story, wood-frame residence on a brick foundation, with asbestos wall shingles, a shallow gabled asphalt-shingled roof that is parallel to the street with a cross gable over the partial-width front porch that forms the entrance, 6/6 double-hung windows, and an attached carport.
168. **409-1/2 MILLER** **CRAFTSMAN** **CA. 1945** **NC**  
One-story, symmetrically massed wood-frame double residence on a brick foundation, with asbestos wall shingles, a gabled roof with asphalt shingles, four-lights/three-panel doors, two partial-width entrance porches supported by metal pilasters, and an addition to one side.
169. **410 MILLER**  
deleted



United States Department of the Interior  
National Park ServiceNational Register of Historic Places  
Continuation SheetSection number 7 Page 31 - NORTH MAIN DISTRICT, HATTIESBURG, MISS.

- 
170. **411 MILLER** **CRAFTSMAN** **CA. 1940** **C**  
One-story, wood-frame bungalow with brick base, asbestos siding, gable roof with asphalt shingles, six-panel door, 4/1 double-hung windows, and attached side carport.
171. **412 MILLER** **QUEEN ANNE** **CA. 1908** **C**  
One-story, irregularly massed wood-frame cottage on a brick foundation. The picturesque asphalt-shingled roof has two cross gables, one chimney, and boxed eaves. The entrance has 1/1 sidelights, a transom, a two-light replacement door. Other doors are four-panel; windows are 1/1 double hung. The wraparound porch is independently roofed and supported by boxed columns on brick pedestals. There is a rear addition.
172. **413 MILLER** **QUEEN ANNE** **CA. 1908** **C**  
One-story, picturesquely massed, brick-veneer residence with a steep pyramidal roof with asphalt shingles, boxed eaves, two cross gables, an entrance with two-light sidelights, a flush wood door, aluminum replacement windows, a wraparound porch that is independently roofed and supported on iron pilasters, and a rear addition.
173. **416 MILLER** **CRAFTSMAN** **CA. 1925** **C**  
One-story, irregularly massed bungalow on a brick foundation with asbestos wall shingles, a pyramidal roof with half-hip dormer and asphalt shingles, a one-light/two-panel door, 1/1 double-hung windows, a partial-width undercut porch supported by boxed columns on brick piers, metal awnings, and a rear added porch.
174. **507 MILLER** **CRAFTSMAN** **CA. 1945** **NC**  
One-story, irregularly massed, wood-frame residence with brick and asbestos walls, a shallow gabled asphalt-shingled roof, six-panel door, aluminum replacement windows, an unattached carport, an addition to the rear, and a partial-width front porch supported by metal piers.
175. **512 MILLER** **CRAFTSMAN** **CA. 1928** **C**  
One-story, symmetrically massed, wood-frame residence, clad in aluminum siding. The shallow gable roof has asphalt shingles, one chimney and boxed eaves. Windows are 4/1 double-hung. The entrance porch is independently roofed. There is a side carport and a rear shed.



United States Department of the Interior  
National Park Service

National Register of Historic Places  
Continuation Sheet

Section number 7 Page 32 - NORTH MAIN DISTRICT, HATTIESBURG, MISS.

- | Section number   | Address    | Style      | CA.      | Condition |
|--|------------|------------|----------|-----------|
| 176.   | 513 MILLER | CRAFTSMAN  | CA. 1917 | C         |
| One-story, wood-frame cottage set on a brick foundation, with asbestos wall shingles, a shallow gabled asphalt-shingled roof running parallel to the street with one cross gable over the entrance porch, a twelve-light door, 6/6 double-hung windows, and a partial-width entrance porch.  |            |            |          |           |
| 177.   | 517 MILLER | CRAFTSMAN  | CA. 1920 | NC        |
| One-story, symmetrically massed, wood-frame residence with a shallow gabled asbestos-shingled roof and an enclosed front porch with an independent roof.   |            |            |          |           |
| 178.   | 519 MILLER | CRAFTSMAN  | CA. 1942 | C         |
| One-story, irregularly massed, wood-frame residence with asbestos wall shingles, a shallow gabled asphalt-shingled roof, 15-light door, 1/1 and 6/6 double-hung windows, a partial-width front porch, exposed rafter ends, knee braces, and an attached two-story garage.  |            |            |          |           |
| 179.   | 521 MILLER | CRAFTSMAN  | CA. 1942 | C         |
| One-story, wood-frame residence on concrete-block foundation. The house has asbestos wall shingles and a shallow, gabled asphalt-shingled roof with one cross gable and exposed rafter ends. The undercut porch has iron pilasters and a metal awning. Windows vary.   |            |            |          |           |
| 180.   | 522 MILLER | QUEEN ANNE | CA. 1908 | C         |
| Wood-frame cottage on a brick foundation with asbestos wall shingles, a hipped roof with asphalt shingles, a multi-light door, 1/1 double-hung windows, a wraparound replacement porch with an independent roof and exposed rafters supported on boxed columns set on brick piers.   |            |            |          |           |
| 181.   | 523 MILLER | NO STYLE   | CA. 1938 | NC        |
| One-story, wood-frame residence on brick foundation with brick and wood walls, a gabled, asphalt-shingled roof with exposed rafter ends, one cross gable, 6/1 double-hung windows, a three-bay front partial-width porch supported by metal pilasters, and an attached side carport.   |            |            |          |           |
| 182.   | 526 MILLER | CRAFTSMAN  | CA. 1917 | C         |
| One-story, wood-frame bungalow on masonry pier foundation, with wood siding, shallow, gabled, asphalt-shingled roof with exposed rafters and one chimney, a multi-light door, 4/1 double-hung windows, and a three-bay, full-width front porch with an independent roof supported by four sets of double columns on brick pedestals. |            |            |          |           |



United States Department of the Interior  
National Park ServiceNational Register of Historic Places  
Continuation SheetSection number 7 Page 33 - NORTH MAIN DISTRICT, HATTIESBURG, MISS.

- 
183. **530 MILLER** **QUEEN ANNE** **CA. 1900** **NC**  
One-story, wood-frame cottage on a brick foundation with wood and brick walls, a gabled, asphalt-shingled roof with one cross gable and boxed eaves, a three-light front door, 4/1 double-hung windows, an enclosed partial-width porch, and a storage outbuilding.
184. **104 WALLEY** **COLONIAL REVIVAL** **CA. 1940** **C**  
One-story, wood-frame residence with gable roof, two chimneys, small entrance porch, varied windows, and six-light door and north-end porch.
185. **108 WALLEY** **CRAFTSMAN** **CA. 1927** **C**  
Two-story, stuccoed residence with gable roof, two chimneys, and knee braces supporting a deep roof overhang, 8/8 and 6/6 double-hung windows, six-light front door, and full-width, one-story front porch supported by tapered columns. [Photo 17 of 27]
186. **200 WALLEY** **CRAFTSMAN** **CA. 1920** **C**  
One-story, wood-frame bungalow with shallow roof, two chimneys, knee braces, street-facing projection abutting an independently roofed front porch supported on boxed wood columns set on masonry piers, 4/4 double-hung windows, and an eight-light front door.
187. **202 WALLEY** **CRAFTSMAN** **CA. 1930** **C**  
Significantly altered, one and a half story bungalow with gable roof, exposed rafter ends, asbestos siding, 4/4 and 6/6 double-hung windows, 5-light sidelights, 3-light transom and single-light door.
188. **308 WEST STREET** **CRAFTSMAN** **CA. 1948** **NC**  
One-story, wood-frame residence with shallow gable roof, 6/6 double-hung and plate glass windows, and a partial-width front porch.
189. **310 WEST STREET**  
deleted
190. **311 WEST STREET** **CRAFTSMAN** **CA. 1940** **C**  
One-story, wood-frame, irregularly massed bungalow on a brick foundation, with vinyl siding, an asphalt-shingled gable roof, 6/6 side windows, and a partial-width, screened-in front porch.



United States Department of the Interior  
National Park Service

National Register of Historic Places  
Continuation Sheet

Section number 7 Page 34 - NORTH MAIN DISTRICT, HATTIESBURG, MISS.

- | Section number | Address   | Style       | CA.  | Code |
|----------------|---|-------------|------|------|
| 191.           | 114 E. 3RD STREET   | QUEEN ANNE  | 1916 | C    |
|                | One-story, wood-frame residence, clad in vinyl siding, with pyramidal roof, boxed eaves, one chimney, non-original, one-story front porch, 1/1 double-hung windows, and a single-light/3-panel front door.  |             |      |      |
| 192.           | 115 E. 3RD STREET   | CRAFTSMAN   | 1922 | C    |
|                | One-story, "ideal-wall" bungalow, oriented perpendicular to the street, with multiple gable roofs, exposed rafter ends, partial-width front porch supported by boxed wood columns set on masonry piers, extending to the west to form a carport, 4/1 double-hung windows, and a 15-light front door.  |             |      |      |
| 193.           | 117 E. 3RD STREET   | OTHER       | 1963 | NC   |
|                | Three modern concrete-block apartment buildings with gable roofs, aluminum windows, and flush wood doors.   |             |      |      |
| 194.           | 118 E. 3RD STREET   | QUEEN ANNE  | 1900 | C    |
|                | Two-story, wood-frame, asbestos-clad cottage with complex picturesque roof, boxed eaves, street-facing projection with clipped corners abutting an altered wraparound porch with independent roof supported by cast-iron pilasters, 2/2 double-hung windows, west-elevation bay, and entrance with sidelights and transom.  |             |      |      |
| 195.           | 200 E. 3RD STREET   | QUEEN ANNE  | 1900 | C    |
|                | Two-story, wood-frame residence with very steep pyramidal roof, boxed eaves, two dormers, 4/4 double-hung windows, a wraparound, one-story porch supported by turned wood columns and enclosed on the east elevation, and an entrance with 2-light transom, 3-lights/1-panel sidelights, and Victorian door with single light and single panel.                                     |             |      |      |
| 196.           | 201 E. 3RD STREET   | QUEEN ANNE  | 1900 | NC   |
|                | One-story, wood-frame cottage, partially brick-veneered, with steep hip roof, two cross gables, boxed eaves, and a street-facing projection with clipped corners abutting a partial-width front porch with cast-iron pilasters supporting an independent roof. Windows are 4/4 double hung, and the entrance has 3-lights/1-panel sidelights, a 2-light transom, and 15-light door. |             |      |      |
| 197.           | 201-1/2 E. 3RD STREET   | CRAFTSMAN   | 1948 | NC   |
|                | Two-story garage, concrete-block apartment with gable roof, 4/1 double-hung windows, and a porch on the west elevation.   |             |      |      |
| 198.           | 209 E. 3RD STREET   | TRADITIONAL | 1972 | NC   |
|                | Two modern residential units, very different in appearance. The street-facing unit is one-story brick and wood, oriented parallel to the street, and the rear unit is two stories and oriented perpendicular to the street.   |             |      |      |



United States Department of the Interior  
National Park Service

National Register of Historic Places  
Continuation Sheet

Section number 7 Page 35 - NORTH MAIN DISTRICT, HATTIESBURG, MISS.

- |      |                       |                      |          |    |  |
|------|-----------------------|----------------------|----------|----|--|
| 199. | 210 E. 3RD STREET     | QUEEN ANNE/CRAFTSMAN | CA. 1900 | C  | One-story, wood-frame bungalow with shallow gable roof, one chimney, one dormer, full-width front porch, 1/1 double-hung windows, and entrance with 3-lights/1-panel sidelights, and 2-light transom.  |
| 200. | 210 E. 3RD STREET     | TRADITIONAL          | CA. 1982 | NC | Three modern, two-story brick-veneer apartment buildings with shallow gable roofs and aluminum 6/6 double-hung windows.  |
| 201. | 214 E. 3RD STREET     | QUEEN ANNE           | CA. 1900 | C  | One-story, wood-frame cottage with gable roof, boxed eaves, cross gable over street-facing projecting abutting an entrance porch, 4/4 double-hung windows, 3-lights/1-panel sidelights, 2-light transom, and 1-light/1-panel door.   |
| 202. | 217 E. 3RD STREET     | CRAFTSMAN            | CA. 1924 | C  | One-story, wood-frame bungalow, oriented perpendicular to the street, with gable roof, exposed rafter ends, knee braces, one chimney, partially enclosed, full-width front porch undercut from the main roof and supported by boxed columns, 6/6 double-hung windows, and 15-light front door. |
| 203. | 218 E. 3RD STREET     | CRAFTSMAN            | CA. 1928 | NC | One-story, wood-frame bungalow with shallow gable roof, exposed rafter ends, small cross gable, original 4/4 double-hung windows, and enclosed, undercut front porch.  |
| 204. | 219 E. 3RD STREET     | QUEEN ANNE/CRAFTSMAN | CA. 1900 | C  | One-story, wood-frame residence with shallow gable roof, exposed rafter ends, undercut entrance porch, 6/1 double-hung windows, and entrance with 3-lights/1-panel sidelights, and single-light transom.   |
| 205. | 102-104 E. 4TH STREET | OTHER                | CA. 1978 | NC | One-story modern commercial building.  |
| 206. | 106 E. 4TH STREET     | CRAFTSMAN            | CA. 1923 | C  | One-story, wood-frame bungalow clad in asbestos siding, oriented perpendicular to the street, with partially enclosed, full-width front porch, undercut from the main gable.   |
| 207. | 107 E. 4TH STREET     | QUEEN ANNE           | CA. 1900 | C  | One-story, wood-frame cottage with steep gable roof, two street-facing cross gables, 1/1 double-hung windows, and clipped corners in the center bay.   |



United States Department of the Interior  
National Park Service

National Register of Historic Places  
Continuation Sheet

Section number 7 Page 36 - NORTH MAIN DISTRICT, HATTIESBURG, MISS.

- |      |  |            |          |    |
|------|--|------------|----------|----|
| 208. | 108 E. 4TH STREET  | QUEEN ANNE | CA. 1900 | C  |
|      | One-story duplex with steep gable roof, boxed eaves, one chimney, and full-width, independently roofed front porch supported by Ionic columns.   |            |          |    |
| 209. | 110 E. 4TH STREET  | QUEEN ANNE | CA. 1900 | C  |
|      | One-story, wood-frame cottage with steep gable roof, full-width, independently roofed front porch supported by cast-iron pilasters, and 4/1 double-hung windows.   |            |          |    |
| 210. | 127 E. 5TH STREET  | QUEEN ANNE | CA. 1900 | C  |
|      | One-story, wood-frame cottage with hip roof, two cross gables, boxed eaves, street-facing projection with bay window, entrance porch with sidelights and transom, and 1/1 double-hung window.  |            |          |    |
| 211. | 128 E. 5TH STREET  | QUEEN ANNE | CA. 1900 | C  |
|      | One-story, wood-frame cottage with picturesque hipped roof, two street-facing cross gables, two chimneys, boxed eaves, partial-width, independently roofed porch, double-hung windows, and front door with sidelights and transom. [Photo 18 of 27]                                  |            |          |    |
| 212. | 100 E. 6TH STREET  | QUEEN ANNE | CA. 1908 | C  |
|      | One-story, wood-frame cottage with hip roof, two cross gables, boxed eaves, two chimneys, 4/1 double-hung windows, wraparound porch, street-facing projection, and entrance with sidelights and transom.   |            |          |    |
| 213. | 104 E. 6TH STREET  | QUEEN ANNE | CA. 1908 | C  |
|      | One-story, wood-frame cottage with picturesque roof, two chimneys, boxed eaves, wraparound porch, and entrance with 1/1 sidelights, single-light transom, and single-light door.   |            |          |    |
| 214. | 108 E. 8TH STREET  | OTHER      | CA. 1960 | NC |
|      | One-story, wood-frame residence, oriented parallel to the street, with shallow gable roof, awning-type windows, and screened front porch.  |            |          |    |
| 215. | 109 E. 8TH STREET  | QUEEN ANNE | CA. 1908 | C  |
|      | One-story, wood-frame residence with steep hip roof, boxed eaves, cross gable, and full-width, three-bay porch, independently roofed.  |            |          |    |
| 216. | 110 E. 8TH STREET  | QUEEN ANNE | CA. 1910 | C  |
|      | One-story, wood-frame cottage with steep hip roof, two street-facing cross gables, one chimney, boxed eaves, full-width front porch, independently roofed, supported on turned wood columns, 1/1 double-hung windows, and entrance with 3-light sidelights and single-light transom. |            |          |    |



United States Department of the Interior  
National Park Service

National Register of Historic Places  
Continuation Sheet

Section number 7 Page 37 - NORTH MAIN DISTRICT, HATTIESBURG, MISS.

- |      |  |                      |          |    |
|------|--|----------------------|----------|----|
| 217. | 111 E. 8TH STREET  | CRAFTSMAN            | CA. 1928 | C  |
|      | One-story, wood-frame bungalow with gable roof, one chimney, exposed rafter ends, knee braces, partial-width entrance porch, and 4/1 double-hung windows.  |                      |          |    |
| 218. | 112 E. 8TH STREET  | QUEEN ANNE           | CA. 1910 | C  |
|      | One-story, wood-frame cottage with symmetrical facade, steep hip roof, two cross gables, and independently roofed, full-width front porch, 1/1 double-hung windows, and reworked entrance.                             |                      |          |    |
| 219. | 114 E. 8TH STREET  | QUEEN ANNE/CRAFTSMAN | CA. 1910 | NC |
|      | One-story, wood-frame house, substantially altered; only the original front door is evident.   |                      |          |    |
| 220. | 99 W. 3RD STREET   | TRADITIONAL          | CA. 1978 | NC |
|      | Two-story apartment building with board-and-batten siding, brick veneer, shallow gable roof, aluminum windows, 4-light doors upstairs and 6-panel doors downstairs.  |                      |          |    |
| 221. | 100 W. 3RD STREET  | CRAFTSMAN            | CA. 1923 | C  |
|      | One-story, wood-frame bungalow, oriented perpendicular to the street, with gable roof, knee braces, exposed rafter ends, two chimneys, and a partial-width front porch supported by boxed columns set on stucco piers. |                      |          |    |
| 222. | 101 W. 3RD STREET  | CRAFTSMAN            | CA. 1923 | C  |
|      | Two-story stucco residence with unusual roof line, large shed dormer, small entrance roof, 6/1 double-hung windows, and a wood door with six lights.   |                      |          |    |
| 223. | 102 W. 3RD STREET  | CRAFTSMAN            | CA. 1923 | C  |
|      | One-story, wood-frame bungalow with shallow gable roof, exposed rafter ends, one chimney, 4/1 double-hung windows, a 3-light/4-panel door, and a partial-width front porch extending to form a carport.                |                      |          |    |
| 224. | 103 W. 3RD STREET  | QUEEN ANNE           | CA. 1900 | C  |
|      | One-story, wood-frame cottage with hip roof, two street-facing cross gables, a street-facing projection, 4/4 double-hung windows, entrance with sidelights and transom, and independently roofed front porch.          |                      |          |    |
| 225. | 106 W. 3RD STREET  | CRAFTSMAN            | CA. 1923 | C  |
|      | One-story, wood-frame bungalow, oriented perpendicular to the street, with shallow gable roof, knee braces, exposed rafter ends, 4/1 double-hung windows, and partial-width, screen-enclosed front porch.              |                      |          |    |



United States Department of the Interior  
National Park Service

National Register of Historic Places  
Continuation Sheet

Section number 7 Page 38 - NORTH MAIN DISTRICT, HATTIESBURG, MISS.

- | Section number | Address  | Style      | CA.  | Condition |
|----------------|--|------------|------|-----------|
| 226.           | 107 W. 3RD STREET  | QUEEN ANNE | 1908 | C         |
|                | One-story, wood-frame cottage with picturesque roof, two chimneys, boxed eaves, 4/1 double-hung windows, and a partially enclosed wraparound porch.  |            |      |           |
| 227.           | 108 W. 3RD STREET  | CRAFTSMAN  | 1923 | C         |
|                | One-story, wood-frame bungalow, oriented perpendicular to the street, with gable roof, exposed rafter ends, 4/1 double-hung windows, and partial-width entrance porch extending to form a carport. |            |      |           |
| 228.           | 101-106 W. 4TH STREET  | OTHER      | 1978 | NC        |
|                | One-story, brick-veneer commercial building with mansard roof, aluminum windows, and wood doors.   |            |      |           |
| 229.           | 114 W. 4TH STREET  | RANCH      | 1955 | NC        |
|                | One-story, brick-veneer residence with gable roof, 6/6 double-hung windows, false blinds, and small, undercut entrance porch.  |            |      |           |
| 230.           | 115 W. 4TH STREET  | CRAFTSMAN  | 1940 | C         |
|                | One-story, wood-frame bungalow, clad in asbestos shingles, oriented perpendicular to the street, with partial-width front porch, 4/1 double-hung windows, and wood door.                           |            |      |           |
| 231.           | 117 W. 4TH STREET  | CRAFTSMAN  | 1940 | C         |
|                | One-story, wood-frame bungalow with shallow gable roof, exposed rafter ends, 4/1 double-hung windows, small entrance porch, east and west elevation projections, and side porches.                 |            |      |           |
| 232.           | 119 W. 4TH STREET  | QUEEN ANNE | 1900 | C         |
|                | One-story, wood-frame cottage with steep hip roof, cross gables, wraparound entrance porch, 4/4 double-hung windows, and entrance with transoms and sidelights.                                    |            |      |           |
| 233.           | 122 W. 4TH STREET  | QUEEN ANNE | 1900 | C         |
|                | One and a half-story wood-frame residence with steep cross-gable roof, wraparound front porch, 1/1 double-hung windows, and Victorian-styled doors.  |            |      |           |
| 234.           | 201 W. 4TH STREET  | RANCH      | 1976 | NC        |
|                | One-story, brick-veneer house with hip roof, aluminum windows, and undercut carport.   |            |      |           |
| 235.           | 202 W. 4TH STREET  | QUEEN ANNE | 1901 | C         |
|                | Two-story, wood frame residence with steep hip roof, street-facing cross gable, boxed eaves, wraparound, one-story porch, and 1/1 double-hung windows. [Photo 20 of 27]                            |            |      |           |



United States Department of the Interior  
National Park Service

National Register of Historic Places  
Continuation Sheet

Section number 7 Page 39 - NORTH MAIN DISTRICT, HATTIESBURG, MISS.

- |      |  |                      |          |    |
|------|--|----------------------|----------|----|
| 236. | 203 W. 4TH STREET  | CRAFTSMAN            | CA. 1936 | C  |
|      | One-story, wood-frame bungalow with gable roof, exposed rafter ends, knee braces, full-width front porch, 4/1 double-hung windows, and six-panel doors.  |                      |          |    |
| 237. | 208 W. 4TH STREET  | QUEEN ANNE           | CA. 1908 | C  |
|      | One-story, wood-frame cottage with steep roof, two street-facing cross gables, two chimneys, 6/1 double-hung windows, single-light doors, and wraparound, independently roofed front porch.                                  |                      |          |    |
| 238. | 213 W. 4TH STREET  | QUEEN ANNE           | CA. 1900 | NC |
|      | One-story, wood-frame cottage, significantly altered, with steep gable roof, boxed eaves, wraparound, independently roofed front porch supported by metal pipes, aluminum replacement windows, and a 1-light/2-panel door.   |                      |          |    |
| 239. | 214 W. 4TH STREET  | RANCH                | CA. 1968 | NC |
|      | One-story wood and brick veneer house on slab with shallow hip roof, boxed eaves, aluminum windows, and undercut carport.  |                      |          |    |
| 240. | 218 W. 4TH STREET  | QUEEN ANNE           | CA. 1900 | C  |
|      | One-story, wood-frame cottage with steep roof, cross gables over street-facing projection, boxed eaves, screened-in porch, 4/1 double-hung windows, and 9-light front door.  |                      |          |    |
| 241. | 219 W. 4TH STREET  | QUEEN ANNE/CRAFTSMAN | CA. 1900 | C  |
|      | One-story, wood-frame residence, remodeled, with gable roof, two chimneys, one dormer, full-width front porch supported by squat boxed columns set on brick piers, 6/1 double-hung windows, and 15-light front door.         |                      |          |    |
| 242. | 225 W. 4TH STREET  | QUEEN ANNE           | CA. 1900 | C  |
|      | One-story, wood-frame cottage clad in asbestos siding, with replacement aluminum windows, gable roof, and full-width front porch, independently roofed and supported on boxed columns.                                       |                      |          |    |
| 243. | 300 W. 4TH STREET  | QUEEN ANNE           | CA. 1900 | C  |
|      | One-story, wood-frame cottage with steep roof, two cross gables, boxed eaves, one chimney, street-facing projection abutting an independently roofed front porch, and 4/1 double-hung windows.                               |                      |          |    |
| 244. | 302 W. 4TH STREET  | QUEEN ANNE           | CA. 1900 | C  |
|      | One-story, wood-frame cottage with steep hip roof, two cross gables, boxed eaves, two chimneys, a reworked front porch, 4/4 double-hung windows, and 3-lights/1-panel sidelights, 2-light transom and 4-lights/1-panel door. |                      |          |    |



United States Department of the Interior  
National Park Service

National Register of Historic Places  
Continuation Sheet

Section number 7 Page 40 - NORTH MAIN DISTRICT, HATTIESBURG, MISS.

- | Section number | Address  | Style                | CA.  | Grade |
|----------------|--|----------------------|------|-------|
| 245.           | 303 W. 4TH STREET  | QUEEN ANNE           | 1900 | C     |
|                | One-story, wood-frame cottage with steep gable roof, cross gable over projection, boxed eaves, one chimney, 4/4 double-hung windows, wraparound porch, and entrance with 3-lights/1-panel sidelights, single-light transom, and single-light door. [Photo 21 of 27]                                |                      |      |       |
| 246.           | 306 W. 4TH STREET  | QUEEN ANNE           | 1900 | C     |
|                | One-story, wood-frame cottage with steep hip roof, two street-facing cross gables, boxed eaves, one chimney, street-facing projection with clipped corners, partially enclosed wraparound porch, 4/4 double-hung windows, and entrance with 3-lights/1-panel sidelights, and 1-light/3-panel door. |                      |      |       |
| 247.           | 310 W. 4TH STREET  | QUEEN ANNE           | 1900 | C     |
|                | One-story, wood-frame cottage, clad in aluminum siding, with steep hip roof, two street-facing cross gables, street-facing projection with clipped corners, screened entrance porch, 1/1 double-hung windows, and 1-light/2-panel door.  |                      |      |       |
| 248.           | 312 W. 4TH STREET  | QUEEN ANNE/CRAFTSMAN | 1908 | C     |
|                | One-story, wood-frame cottage with asbestos siding, substantially remodeled about 1940.  |                      |      |       |
| 249.           | 313 W. 4TH STREET  | QUEEN ANNE           | 1908 | C     |
|                | One-story, wood-frame cottage with asbestos siding, hip roof, two street-facing cross gables, street-facing projection with clipped corners, screened entrance porch, 4/4 double-hung windows, and entrance with single-light transom and three-light door.  |                      |      |       |
| 250.           | 314 W. 4TH STREET  | CRAFTSMAN            | 1923 | C     |
|                | One-story, wood-frame bungalow with gable roof, exposed rafter ends, knee braces, two chimneys, full-width front porch undercut from main roof, and 4/1 double-hung windows.   |                      |      |       |
| 251.           | 319 W. 4TH STREET  | QUEEN ANNE           | 1900 | C     |
|                | One-story, wood-frame cottage, substantially altered, with hip roof, two street-facing cross gables, street-facing projection with clipped corners, entrance porch, 2/2 double-hung windows, and louvered front door.  |                      |      |       |
| 252.           | 325 W. 4TH STREET  | QUEEN ANNE           | 1900 | C     |
|                | One-story, wood-frame cottage, significantly altered, with loss of front porch, original openings, and other historic details.   |                      |      |       |



United States Department of the Interior  
National Park Service

National Register of Historic Places  
Continuation Sheet

Section number 7 Page 41 - NORTH MAIN DISTRICT, HATTIESBURG, MISS.

- | Section Number | Address   | Style      | CA.  | Grade |
|----------------|---|------------|------|-------|
| 253.           | 402 W. 4TH STREET   | QUEEN ANNE | 1900 | C     |
|                | One and one-half story wood-frame cottage clad in asbestos siding with steep gable roof, boxed eaves, one chimney, brick pier foundation, a wraparound porch, independently roofed and supported on boxed columns set on masonry piers, an entry with an eight-light door and a transom, and 1/1 double-hung windows.   |            |      |       |
| 254.           | 403 W. 4TH STREET   | QUEEN ANNE | 1895 | C     |
|                | One-story, wood-frame cottage with pyramidal roof, cross gable, boxed eaves, and four-bay wraparound porch, independently roofed and supported by boxed columns set on brick piers. Windows are 1/1 double-hung, and the entrance has a tripartite transom, four-light sidelights, and a nine-light door.   |            |      |       |
| 255.           | 405 W. 4TH STREET   | QUEEN ANNE | 1908 | C     |
|                | One-story, wood-frame cottage with complex roof, boxed eaves, one chimney, an independently roofed, two-bay, wraparound porch supported on pairs of boxed columns set on masonry piers, aluminum replacement windows, and three-light-over-three-panel doors.   |            |      |       |
| 256.           | 407 W. 4TH STREET   | CRAFTSMAN  | 1922 | C     |
|                | One and one-half story wood-frame bungalow with complex roof, dutch-lap asbestos shingles, two chimneys, exposed rafter ends, knee braces, one large dormer with two 1/1 double-hung windows, a fifteen-light door, and 1/1 double-hung windows.  |            |      |       |
| 257.           | 408 W. 4TH STREET   | QUEEN ANNE | 1900 | C     |
|                | One-story, wood-frame, irregularly massed cottage, clad in asbestos siding, with a hipped roof, two street-facing cross gables, an independently roofed, three-bay wraparound front porch supported on boxed columns set on masonry piers, a projecting southeast bay with clipped corners, and 4/4 double-hung windows.  |            |      |       |
| 258.           | 409 W. 4TH STREET   | TUDOR      | 1922 | C     |
|                | One and one-half story brick-veneer bungalow, picturesquely massed, with clipped eaves, one chimney, wall dormer, replacement fixed-glass windows on the street elevation, and an entrance with an eight-light door and five-light fanlight.  |            |      |       |
| 259.           | 412 W. 4TH STREET   | QUEEN ANNE | 1908 | C     |
|                | One-story, wood-frame cottage with wood siding, on concrete-block foundation piers. The multiple gabled roof has asphalt shingles, boxed eaves, and one chimney. A five-bay front porch (which originally wrapped down the northeast side, but is now enclosed) is independently roofed and supported on turned wood columns. Windows are 1/1 double-hung, and the entrance has a single-light transom, 3-lights/1-panel sidelights, and a single-light/two-panel door. |            |      |       |



United States Department of the Interior  
National Park Service

National Register of Historic Places  
Continuation Sheet

Section number 7 Page 42 - NORTH MAIN DISTRICT, HATTIESBURG, MISS.

- | Section Number | Address   | Style       | CA.  | Rating |
|----------------|---|-------------|------|--------|
| 260.           | 414 W. 4TH STREET   | QUEEN ANNE  | 1908 | C      |
|                | One-story, wood-frame cottage clad in asbestos siding, with a hipped roof, two street-facing cross gables, a projecting northwest corner bay, brick piers, a two-bay partial-width front porch, 1/1 double-hung windows, and a three-light over four-panel door.  |             |      |        |
| 261.           | 416 W. 4TH STREET   | CRAFTSMAN   | 1930 | C      |
|                | One-story, wood-frame bungalow, clad in asbestos siding, with shallow gable roof, cross gable over partial-width front porch, exposed rafter ends, brick pier foundation, 4/4 and 6/6 double-hung windows, and a three-light solid-core wood door.  |             |      |        |
| 262.           | 419 W. 4TH STREET   | QUEEN ANNE  | 1908 | C      |
|                | One-story, wood-frame cottage, picturesquely massed, with multiple gable roof, boxed eaves, brick pier foundation, full-width, five-bay front porch, independently roofed, supported on Doric columns, and projecting slightly in the entrance bay, 1/1 double-hung windows, single-light entry door, and an addition to the rear |             |      |        |
| 263.           | 422 W. 4TH STREET   | QUEEN ANNE  | 1908 | C      |
|                | One-story, wood-frame bungalow clad in asbestos siding, with gable roof, exposed rafter ends, independently roofed, partial-width, three-bay front porch supported by iron pilasters, which becomes a carport on the northwest side, 4/1 double-hung windows, and a three-light solid-core wood door.                             |             |      |        |
| 264.           | 423 W. 4TH STREET   | QUEEN ANNE  | 1908 | C      |
|                | One-story, wood-frame cottage clad in asbestos siding, with hipped roof, two street-facing gables, boxed eaves, brick foundation, partial-width front porch, independently roofed and supported by iron pilasters, 1/1 double-hung windows, and an entry with three-light/one-panel sidelights and a single-light door.           |             |      |        |
| 265.           | 428 W. 4TH STREET   | TRADITIONAL | 1980 | NC     |
|                | Two identical, two-story, brick veneer apartment buildings with mansard roofs, asphalt roofing shingles, slab foundations, 6/6 metal windows, partial-width, two-story entrance porches, and metal stairs.  |             |      |        |
| 266.           | 433 W. 4TH STREET   | QUEEN ANNE  | 1908 | C      |
|                | One-story, wood-frame cottage with gable roof, boxed eaves, four-bay wraparound front porch, independently roofed and supported on tapered, boxed columns set on masonry piers, pipe railing, and 4/4 double-hung windows.  |             |      |        |



United States Department of the Interior  
National Park Service

National Register of Historic Places  
Continuation Sheet

Section number 7 Page 43 - NORTH MAIN DISTRICT, HATTIESBURG, MISS.

- | Section number   | Address           | Style         | CA.  | Grade |
|--|-------------------|---------------|------|-------|
| 267.   | 438 W. 4TH STREET | QUEEN ANNE    | 1908 | C     |
| One-story, wood-frame cottage, clad in asbestos siding, with multiple-gabled roof, boxed eaves, brick pier foundations, independently roofed, five-bay wraparound porch with boxed columns set on brick piers, 4/4 double-hung windows, and entry with tripartite transom and sidelights.  |                   |               |      |       |
| 268.   | 439 W. 4TH STREET | CRAFTSMAN     | 1926 | C     |
| One-story, wood-frame bungalow, symmetrically massed, clad in stucco, with jerkin-head roof, dutch-lab asbestos shingles, partial-width entry porch, 2/2 double-hung windows, louvered door, and rear addition.  |                   |               |      |       |
| 269.   | 440 W. 4TH STREET | QUEEN ANNE    | 1908 | C     |
| One-story, wood-frame cottage clad in asbestos siding, with gable roof, two street-facing cross gables, brick pier foundation, independently roofed wraparound front porch with tapered boxed columns set on brick piers and enclosed in the northeast end, a street-facing bay with clipped corners, 2/2 double-hung windows, and entry with single-light transom, two-lights/one-light panel sidelights, and a six-panel door. |                   |               |      |       |
| 270.   | 441 W. 4TH STREET | MEDITERRANEAN | 1910 | C     |
| One-story, wood-frame residence, symmetrically massed, with hipped roof, boxed eaves, half-hip dormer, drop siding, brick foundation, 1/1 double-hung windows, entrance with single-light transom, 3-light/1-panel sidelights, and 1-light/1-panel front door. The five-bay, full-width front porch is independently roofed and supported on wood columns set on pedestals, between which spans a wood railing.                  |                   |               |      |       |
| 271.   | 445 W. 4TH STREET | QUEEN ANNE    | 1908 | C     |
| One-story, wood-frame cottage on a brick foundation, picturesquely massed, with substantial alterations. The complex roof has asphalt shingles, two cross gables, and boxed eaves. Windows are 1/1 double-hung and the door has two lights over four panels. The wraparound porch is independently roofed and enclosed on the northeast end.   |                   |               |      |       |
| 272.   | 446 W. 4TH STREET | CRAFTSMAN     | 1926 | C     |
| One-story brick bungalow with gable roof, asphalt shingles, exposed rafter ends, knee braces, attic window and vent, an undercut, partial-width front porch, 4/1 double-hung windows, and three-light door.  |                   |               |      |       |
| 273.   | 448 W. 4TH STREET | CRAFTSMAN     | 1917 | C     |
| One-story stucco bungalow with shallow gable roof, asphalt shingles, one chimney, exposed rafter ends, shed dormer with three 3-light windows, 4/1 and 8-light casement windows, and an integral carport.  |                   |               |      |       |



United States Department of the Interior  
National Park ServiceNational Register of Historic Places  
Continuation SheetSection number 7 Page 44 - NORTH MAIN DISTRICT, HATTIESBURG, MISS.

- 
- | Section number   | Address           | Style         | CA.  | Grade |
|--|-------------------|---------------|------|-------|
| 274.   | 449 W. 4TH STREET | QUEEN ANNE    | 1908 | C     |
| Vacant, one-story, irregularly massed, wood-frame cottage on brick foundation, with asbestos-clad walls, a pyramidal asphalt-shingled roof, two cross gables, a 4-light/2-panel door, 1/1 windows, wraparound front porch, independently roofed and supported by boxed columns set on brick piers, and an addition to the rear.          |                   |               |      |       |
| 275.   | 451 W. 4TH STREET | MEDITERRANEAN | 1908 | C     |
| One-story, wood-frame cottage with hip roof, asphalt shingles, deep boxed eaves, two chimneys, single half-hip dormer with two boarded-up windows, a wraparound porch, independently roofed and supported on boxed columns, 6/1 double-hung windows, and an entrance with transom and 6-light/2-panel door.                              |                   |               |      |       |
| 276.   | 453 W. 4TH STREET | CRAFTSMAN     | 1923 | C     |
| One-story, wood-frame bungalow clad in asbestos siding, with shallow roof, asphalt shingles, exposed rafter ends, knee braces, brick foundation, full-width undercut front porch supported on boxed columns set on masonry piers and extending to the west to form a carport, 4/1 double-hung windows, and a 4-light/3-panel entry door. |                   |               |      |       |
| 277.   | 455 W. 4TH STREET | CRAFTSMAN     | 1925 | C     |
| One-story, wood-frame bungalow clad in vinyl siding, with gable roof, asphalt shingles, non-original boxed eaves and knee braces, three chimneys, full-width undercut front porch supported on boxed columns set on masonry piers, 3/1 double-hung windows, and solid-core entry door.   |                   |               |      |       |
| 278.   | 456 W. 4TH STREET | GOTHIC        | 1927 | C     |
| Large, brick church with false buttresses and stained-glass windows with Gothic tracery.   |                   |               |      |       |
| 279.   | 457 W. 4TH STREET | CRAFTSMAN     | 1926 | C     |
| One-story, wood-frame bungalow with gable roof, asphalt shingles, exposed rafter ends, knee braces, attic windows, brick-pier foundation, a full-width, three-bay, independently roofed front porch supported by wood columns set on masonry piers, 4/1 double-hung windows and a four-light door.                                       |                   |               |      |       |
| 280.   | 459 W. 4TH STREET | CRAFTSMAN     | 1928 | C     |
| One-story, wood-frame bungalow with gable roof, asphalt shingles, exposed rafter ends, knee braces, one chimney, asbestos-clad walls, 6/1 panel sash, 4/1 double-hung windows, and a three-bay, full-width porch with independent roof and boxed columns.  |                   |               |      |       |



United States Department of the Interior  
National Park ServiceNational Register of Historic Places  
Continuation SheetSection number 7 Page 45 - NORTH MAIN DISTRICT, HATTIESBURG, MISS.

- 
- |      |  |            |          |   |
|------|--|------------|----------|---|
| 281. | 461 W. 4TH STREET  | CRAFTSMAN  | CA. 1925 | C |
|      | One-story, wood-frame bungalow, oriented perpendicular to the street, with gable roof, exposed rafter ends, knee braces, nearly full-width front porch supported by boxed columns set on masonry piers.  |            |          |   |
| 282. | 528 W. 4TH STREET  | QUEEN ANNE | CA. 1900 | C |
|      | One and one-half story wood-frame cottage on a brick-pier foundation, with steep roof with asphalt shingles, four cross gables, boxed eaves, large gabled dormer with 1/1 double-hung windows, a wraparound porch, independently roofed and supported on wood columns, and a single-light door with single-light transom. [Photo 22 of 27]                                       |            |          |   |
| 283. | 530 W. 4TH STREET  | QUEEN ANNE | CA. 1900 | C |
|      | One-story, wood-frame cottage with gable roof, street-facing cross gable, asphalt shingles, boxed eaves, two chimneys, a glass-enclosed wraparound porch, independently roofed, various window types, and an entrance with 1-light/1-panel sidelights and 1-light/3-panel door.  |            |          |   |
| 284. | 533 W. 4TH STREET  | QUEEN ANNE | CA. 1900 | C |
|      | One-story, wood-frame cottage with hipped roof, asphalt shingles, boxed eaves, eave brackets, two chimneys, and five-bay, full-width front porch, independently roofed and supported on turned wood columns, 4/4 and 1/1 double-hung windows, and an entrance with a single-light transom and single-light door. [Photo 23 of 27]  |            |          |   |
| 285. | 535 W. 4TH STREET  | CRAFTSMAN  | CA. 1922 | C |
|      | One-story, wood-frame bungalow with gable roof, asphalt shingles, exposed rafter ends, knee braces, a full-width front porch, undercut from the main roof and supported on clusters of squat box columns set on masonry piers, 8/1 double-hung windows, and 6-light/3-panel door.  |            |          |   |
| 286. | 536 W. 4TH STREET  | CRAFTSMAN  | CA. 1919 | C |
|      | One-story, wood-frame, brick-veneer bungalow with gable roof, cross gable over projection, partial-width front porch, 4/1 double-hung windows, and 6-light/1-panel entrance.   |            |          |   |
| 287. | 537 W. 4TH STREET  | QUEEN ANNE | CA. 1905 | C |
|      | One-story, wood-frame cottage with intersecting gable roof, asbestos shingles, boxed eaves, one chimney, and projecting northwest bay abutting a wraparound, independently roofed porch supported on boxed wood columns, between which spans a wood railing. Windows are 6/1 double-hung, and the entrance has a single-light transom and 6-light/3-panel door. [Photo 24 of 27] |            |          |   |



United States Department of the Interior  
National Park Service

National Register of Historic Places  
Continuation Sheet

Section number 7 Page 46 - NORTH MAIN DISTRICT, HATTIESBURG, MISS.

- | Section Number | Address           | Style      | CA.  | Grade | Description   |
|----------------|-------------------|------------|------|-------|---|
| 288.           | 543 W. 4TH STREET | CRAFTSMAN  | 1923 | C     | One-story, wood-frame, irregularly massed bungalow on a brick foundation, with asbestos-clad walls, a gabled, asphalt-shingled roof with exposed rafters, a 4-light/3-panel door, 4/1 double-hung windows, a partial-width, undercut front porch and integral carport.  |
| 289.           | 544 W. 4TH STREET | QUEEN ANNE | 1900 | C     | One-story, wood-frame cottage on a brick-pier foundation, with hipped roof, asphalt shingles, boxed eaves, two street-facing cross gables with decorative vergeboards, one over a projecting bay with clipped corners. The three-bay wraparound porch is independently roofed and supported on boxed columns set on masonry piers. Windows are 8/1 double-hung and the door has eight lights. |
| 290.           | 101 W. 5TH STREET | QUEEN ANNE | 1900 | C     | One-story, wood-frame cottage with steep, picturesque roof, boxed eaves, wraparound front porch, partially enclosed and supported by Tuscan columns, 1/1 and 4/1 double-hung windows, single-light door, and a street-facing projection with clipped corners.   |
| 291.           | 103 W. 5TH STREET | QUEEN ANNE | 1900 | C     | One-story, wood-frame cottage with steep hip roof, two cross gables, street-facing projection, wraparound, independently roofed front porch supported by Tuscan columns, 1/1 double-hung windows, and entrance with sidelights and transom. [Photo 25 of 27]  |
| 292.           | 120 W. 5TH STREET | CRAFTSMAN  | 1930 | C     | One-story, wood-frame bungalow clad in asbestos siding, with gable roof, partial-width front porch, carport, and 4/1 double-hung windows.   |
| 293.           | 122 W. 5TH STREET | CRAFTSMAN  | 1930 | C     | One-story, wood-frame bungalow, clad in asbestos siding, with gable roof, exposed rafter ends, partial-width entrance porch, 4/1 double-hung windows, 4-light/3-panel door, and an east elevation carport.  |
| 294.           | 128 W. 5TH STREET | QUEEN ANNE | 1900 | C     | One-story, wood-frame residence with steep roof, boxed eaves, 1/1 double-hung windows with false blinds, 1-light/2-panel front door, partially enclosed full-width front porch, with an independent roof supported by Ionic columns.  |
| 295.           | 133 W. 5TH STREET | QUEEN ANNE | 1904 | C     | One-story, wood-frame cottage, clad in asbestos siding, with hip roof, two street-facing cross gables, full-width wraparound front porch, 1/1 double-hung windows, and entrance with single-light transom, 1/1 sidelights, and 3-light/2-panel door.  |



United States Department of the Interior  
National Park Service

National Register of Historic Places  
Continuation Sheet

Section number 7 Page 47 - NORTH MAIN DISTRICT, HATTIESBURG, MISS.

- |      |  |                         |          |   |
|------|--|-------------------------|----------|---|
| 296. | 134 W. 5TH STREET  | QUEEN ANNE              | CA. 1904 | C |
|      | One-story, wood-frame residence with asbestos siding, hip roof, boxed eaves with shallow brackets, a single dormer, 1/1 double-hung windows, flush wood door, and small entrance porch replacing a wraparound porch.                               |                         |          |   |
| 297. | 135 W. 5TH STREET  | MEDITERRANEAN/CRAFTSMAN | CA. 1914 | C |
|      | One-story, wood-frame bungalow with gable roof, boxed eaves, single dormer, full-width front porch, and 12/1 double-hung windows.  |                         |          |   |
| 298. | 136 W. 5TH STREET  | QUEEN ANNE              | CA. 1900 | C |
|      | One-story, wood-frame cottage with shallow hip roof, boxed eaves, single dormer, wraparound porch, 1/1 double-hung windows, entrance with 1/1 double-hung window, single-light transom, and full-width front porch that wraps the side elevations. |                         |          |   |
| 299. | 137 W. 5TH STREET  | QUEEN ANNE              | CA. 1900 | C |
|      | One-story, wood-frame cottage clad in asbestos siding, with hip roof, two street-facing cross gables, boxed eaves, a street-facing projection abutting the entrance porch, 4/1 double-hung windows, and a pair of 15-light front doors.            |                         |          |   |
| 300. | 138 W. 5TH STREET  | CRAFTSMAN               | CA. 1920 | C |
|      | One-story, wood-frame bungalow with shallow gable roof, exposed rafter ends, knee braces, full-width front porch undercut from main roof, 1/1 double-hung windows, and single-light transom and door.  |                         |          |   |
| 301. | 139 W. 5TH STREET  | CRAFTSMAN               | CA. 1926 | C |
|      | Two-story, wood-frame residence with hip roof, exposed rafter ends, full-width, three-bay front porch, independently roofed, paired 4/1 double-hung windows, and a 4-light/3-panel front door.   |                         |          |   |
| 302. | 140 W. 5TH STREET  | QUEEN ANNE              | CA. 1900 | C |
|      | One-story, wood-frame cottage with gable roof, cross gable over street-facing projection abutting an entrance porch, 1/1 double-hung windows, and 1-light/3-panel front door.  |                         |          |   |
| 303. | 141 W. 5TH STREET  | CRAFTSMAN               | CA. 1932 | C |
|      | One-story, wood-frame bungalow, oriented perpendicular to the street, with shallow gable roof, full-width front porch, independently roofed, 4/1 double-hung windows, and glass and wood door.   |                         |          |   |
| 304. | 142 W. 5TH STREET  | CRAFTSMAN               | CA. 1930 | C |
|      | One-story, wood-frame bungalow, oriented perpendicular to the street, with shallow gable roof, exposed rafter ends, knee braces, partial-width front porch, 4/1 double-hung windows, and three-light front door.                                   |                         |          |   |



United States Department of the Interior  
National Park Service

National Register of Historic Places  
Continuation Sheet

Section number 7 Page 48 - NORTH MAIN DISTRICT, HATTIESBURG, MISS.

- | Section number | Address  | Style            | CA.  | Rating |
|----------------|--|------------------|------|--------|
| 305.           | 143 W. 5TH STREET  | CRAFTSMAN        | 1927 | C      |
|                | One-story, wood-frame duplex bungalow, oriented perpendicular to the street, partially clad in asbestos siding, with shallow gable roof, exposed rafter ends, full-width front porch, 4/1 double-hung windows, and five-panel front door.                  |                  |      |        |
| 306.           | 144 W. 5TH STREET  | QUEEN ANNE       | 1900 | C      |
|                | One-story, wood-frame cottage, substantially altered, with asbestos siding, steep, hip roof, cross gable over street-facing projection abutting a reworked, independently roofed entrance porch, replacement aluminum windows, and three-light front door. |                  |      |        |
| 307.           | 145 W. 5TH STREET  | COLONIAL REVIVAL | 1932 | C      |
|                | One-story, wood-frame residence, clad in asbestos siding, with gable roof, street-facing bays, partial-width entrance porch, 4/1 double-hung windows, and flush wood door.   |                  |      |        |
| 308.           | 147 W. 5TH STREET  | CRAFTSMAN        | 1928 | C      |
|                | One-story brick firehouse, converted to an art gallery. The roof is very shallow, with exposed rafter ends. There is a large garage door; 6/6 double hung windows, and a 9-light/1-panel front door.   |                  |      |        |
| 309.           | 102 W. 7TH STREET  | OTHER            | 1973 | NC     |
|                | Two-story, wood-frame apartment building with flat roof, full-length front porch, aluminum windows, and flush wood doors.  |                  |      |        |
| 310.           | 107 W. 7TH STREET  | COLONIAL REVIVAL | 1945 | NC     |
|                | One-story, wood-frame residence, clad in asbestos siding, with shallow gable roof, screened-in, undercut entrance porch, 6/6 double-hung windows, and a flush wood door.   |                  |      |        |
| 311.           | 111 W. 7TH STREET  | COLONIAL REVIVAL | 1940 | C      |
|                | One-story, wood-frame bungalow with gable roof, cross gable, clipped eaves, 6/6 double-hung windows, and a wood door.  |                  |      |        |
| 312.           | 201 W. 7TH STREET  | OTHER            | 1970 | NC     |
|                | One-story, brick-veneer slab house with gable roof, partial-width entrance porch, aluminum windows, and decorative door.   |                  |      |        |
| 313.           | 203 W. 7TH STREET  | COLONIAL REVIVAL | 1908 | C      |
|                | One-story, wood-frame house, clad in asbestos siding, with steep hip roof, boxed eaves, two street-facing cross gables, full-width front porch supported by cast-iron pilasters, 1/1 double-hung windows, flush wood door, and plate-glass window.         |                  |      |        |



United States Department of the Interior  
National Park Service

National Register of Historic Places  
Continuation Sheet

Section number 7 Page 49 - NORTH MAIN DISTRICT, HATTIESBURG, MISS.

- |      |  |                  |          |    |
|------|--|------------------|----------|----|
| 314. | 204 W. 7TH STREET  | COLONIAL REVIVAL | CA. 1938 | C  |
|      | One-story, wood-frame residence clad in asbestos siding, with gable roof, asbestos shingles, boxed eaves, partial-width front porch, and aluminum awnings.                                     |                  |          |    |
| 315. | 206 W. 7TH STREET  | CRAFTSMAN        | CA. 1927 | C  |
|      | One-story, wood-frame residence with shallow gable roof, full-width front porch undercut from gable, and a variety of opening types.   |                  |          |    |
| 316. | 208 W. 7TH STREET  | CRAFTSMAN        | CA. 1942 | C  |
|      | One-story, wood-frame bungalow with asbestos siding, gable roof with asphalt shingles, west-end carport, 6/6 double-hung windows, 6-light front door, and small entrance porch.                |                  |          |    |
| 317. | 209 W. 7TH STREET  | CRAFTSMAN        | CA. 1926 | C  |
|      | One-story, wood-frame bungalow with aluminum siding, gable roof with asphalt shingles, a full-width modified entrance porch, 4/1 double-hung windows, and paneled doors.                       |                  |          |    |
| 318. | 210 W. 7TH STREET  | CRAFTSMAN        | CA. 1923 | C  |
|      | One-story, wood-frame bungalow, clad in asbestos siding, with a full-width front porch undercut from the main roof and supported by metal pilasters, with two doors and windows off the porch. |                  |          |    |
| 319. | 211 W. 7TH STREET  | OTHER            | CA. 1950 | NC |
|      | One-story, brick-veneer slab house with aluminum windows.  |                  |          |    |
| 320. | 212 W. 7TH STREET  | CRAFTSMAN        | CA. 1936 | C  |
|      | One-story, wood-frame bungalow, partially clad in asbestos, with gable roof, knee braces, aluminum windows, and wraparound entrance porch.   |                  |          |    |
| 321. | 213 W. 7TH STREET  | CRAFTSMAN        | CA. 1923 | C  |
|      | One-story, wood-frame bungalow with gable roof, exposed rafter ends, knee braces, one chimney, 4/1 double-hung windows, 4-light front door, and a partial-width, wraparound entrance porch.    |                  |          |    |
| 322. | 214 W. 7TH STREET  | CRAFTSMAN        | CA. 1936 | C  |
|      | One-story, brick-veneer bungalow with gable roof, exposed rafter ends, shed dormer, full-width front porch extending to form a carport, 4/1 double-hung windows, and a 3-light front door.     |                  |          |    |
| 323. | 215 W. 7TH STREET  | COLONIAL REVIVAL | CA. 1948 | NC |
|      | One-story, wood-frame bungalow, clad with asbestos siding, with shallow gable roof, cross gable, 6/6 double-hung windows, and partial-width front porch.                                       |                  |          |    |



United States Department of the Interior  
National Park Service

National Register of Historic Places  
Continuation Sheet

Section number 7 Page 50 - NORTH MAIN DISTRICT, HATTIESBURG, MISS.

- |      |   |           |          |    |
|------|---|-----------|----------|----|
| 324. | 216 W. 7TH STREET   | CRAFTSMAN | CA. 1938 | C  |
|      | One-story, brick-veneer bungalow with gable roof, one chimney, boxed eaves, small cross gable over the entrance, 6/6 double-hung windows, and a 6-light front door.                                       |           |          |    |
| 325. | 217 W. 7TH STREET   | CRAFTSMAN | CA. 1948 | NC |
|      | One-story, wood-frame bungalow with gable roof, cross gables over the entrance, 6/6 double-hung windows, and an enclosed porch in the east elevation.   |           |          |    |
| 326. | 218 W. 7TH STREET   | CRAFTSMAN | CA. 1948 | NC |
|      | One-story, brick-veneer bungalow, oriented perpendicular to the street, with gable roof, exposed rafter ends, one chimney stuccoed gable ends, 6/1 double-hung windows, and a 6-light/1-panel front door. |           |          |    |
| 327. | 219 W. 7TH STREET   | CRAFTSMAN | CA. 1923 | C  |
|      | One-story, wood-frame bungalow with complex roof, exposed rafter ends, 4/1 double-hung windows, 6-light/3-panel wood door, and a west-end carport.  |           |          |    |
| 328. | 220 W. 7TH STREET   | RANCH     | CA. 1953 | NC |
|      | One-story house, oriented parallel to the street, with shallow gable roof, street-facing cross gable, and a variety of opening types.   |           |          |    |
| 329. | 300 W. 7TH STREET   | CRAFTSMAN | CA. 1938 | C  |
|      | One-story, brick-veneer residence with gable roof, boxed eaves, cross gable over entrance, 4/1 double-hung windows, false blinds, aluminum awnings, corner porch, and louvered front door.                |           |          |    |
| 330. | 301 W. 7TH STREET   | SPANISH   | CA. 1928 | C  |
|      | JEFF DAVIS ELEMENTARY SCHOOL, CORNER EUROPA<br>One-story, rambling school with eclectic ornament concentrated around the entrance, which has Solomonic columns and carved bears. [Photo 26 of 27]         |           |          |    |
| 331. | 306 W. 7TH STREET   | CRAFTSMAN | CA. 1936 | C  |
|      | One-story, wood-frame bungalow with gable roof, cross gable, partial-width entrance porch, 6/6 double-hung windows, and nine-light door.  |           |          |    |
| 332. | 308 W. 7TH STREET   | CRAFTSMAN | CA. 1927 | NC |
|      | One-story, brick-veneer bungalow, substantially remodeled with the enclosure of the front porch and a carport added to the street facade.   |           |          |    |
| 333. | 312 W. 7TH STREET   | CRAFTSMAN | CA. 1938 | C  |
|      | One-story, wood-frame bungalow with intersecting cross gables, exposed rafter ends, 6/6 double-hung windows, and a louvered front door.   |           |          |    |



United States Department of the Interior  
National Park ServiceNational Register of Historic Places  
Continuation SheetSection number 7 Page 51 - NORTH MAIN DISTRICT, HATTIESBURG, MISS.

- 
- |      |   |                   |                 |          |
|------|---|-------------------|-----------------|----------|
| 334. | <b>314 W. 7TH STREET</b>  | <b>CRAFTSMAN</b>  | <b>CA. 1938</b> | <b>C</b> |
|      | One-story, wood-frame bungalow, oriented perpendicular to the street, with gable roof, one chimney, 6/6 double-hung windows, and a paneled entrance door.   |                   |                 |          |
| 335. | <b>316 W. 7TH STREET.</b>   | <b>CRAFTSMAN</b>  | <b>CA. 1928</b> | <b>C</b> |
|      | One-story, wood-frame bungalow with gable roof, exposed rafter ends, one chimney, enclosed front porch, side carport, and 4/1 double-hung windows.  |                   |                 |          |
| 336. | <b>112-14 W. 8TH STREET</b>   | <b>CRAFTSMAN</b>  | <b>CA. 1940</b> | <b>C</b> |
|      | One-story, wood-frame with asbestos siding, H-plan house with hip-roofed center bay flanked each side by louvered gables. The center screened-porch entrance and pairs of double-hung windows are covered by aluminum awnings. An open porch and wood frame addition are on the rear.   |                   |                 |          |
| 337. | <b>113 W. 8TH STREET</b>  | <b>CRAFTSMAN</b>  | <b>CA. 1926</b> | <b>C</b> |
|      | One-story, wood-frame, gable-ended house with dutch-lap siding above brick/wainscot, exposed rafters and rectangular wooden attic vents in each gable, 4/1 windows, a gabled porch set to the right side, supported by ornamental cast-iron posts, and a shed roof carport attached to the right side.  |                   |                 |          |
| 338. | <b>115 W. 8TH STREET</b>  | <b>CRAFTSMAN</b>  | <b>CA. 1926</b> | <b>C</b> |
|      | One-story, wood-frame gable-ended house with gabled porch set to right side. Inappropriate arched infill springs from two original tapered stucco columns. The off-center entrance door and two 6/6 double-hung windows are the only elements of the rather blank facade. The low, curved wall between columns is original.   |                   |                 |          |
| 339. | <b>116 8TH STREET</b>   | <b>QUEEN ANNE</b> | <b>CA. 1910</b> | <b>C</b> |
|      | One-story, wood-frame house with high-ridge, hipped roof with gabled extensions to the right front and left rear. A four-bay, shed-roofed porch wraps the front, and three bays on the left side, supported by tapered, turned posts. The entry has a 1-light/1-panel door and 1/1 double-hung sidelight on the right only. Windows are Queen Anne 15/1 double-hung. The rear porch is enclosed.  |                   |                 |          |
| 340. | <b>117 W. 8TH STREET</b>  | <b>QUEEN ANNE</b> | <b>CA. 1934</b> | <b>C</b> |
|      | Two-story, wood-frame house clad in asbestos siding, with second floor projecting from center portion of side-to-side gabled roofs with exposed rafter ends. The front gabled, centered porch is supported by square columns and covers a 21-light front door and two 6/6 double-hung windows. There are two 6/6 double-hung windows on each side of the porch, and four evenly spaced 4/6 double-hung windows on the second-floor front. |                   |                 |          |



United States Department of the Interior  
National Park ServiceNational Register of Historic Places  
Continuation SheetSection number 7 Page 52 - NORTH MAIN DISTRICT, HATTIESBURG, MISS.

- 
- |      |   |            |          |   |
|------|---|------------|----------|---|
| 341. | 118 W. 8TH STREET   | QUEEN ANNE | CA. 1910 | C |
|      | One-story, wood-frame cottage with asbestos siding and a hip roof with gable extension on the right front. A shed roof porch covers the left front and side of the house, supported by ornamental iron posts. A single 4/4 double-hung window is centered in the front extension. A wood paneled front door is to the right side of the porch, with an oversized, horizontal 2/2 double-hung window to the left. A secondary door is to the right, on the perpendicular side wall of the porch. |            |          |   |
| 342. | 119 W. 8TH STREET   | QUEEN ANNE | CA. 1910 | C |
|      | One-story, wood-frame cottage with hip roof with wood louvered attic vent and exposed rafter ends. The three-bay front porch is independently roofed, supported by four pairs of square wood posts with brackets. The four-panel front door has a single-light transom; centered to each side are Queen Anne double-hung windows with incorrect shutters. A rear porch is enclosed.   |            |          |   |
| 343. | 120 W. 8TH STREET   | CRAFTSMAN  | CA. 1936 | C |
|      | One-story, brick-veneer bungalow with gable ends to each side and a carport addition on the right. The center entry portico with square wood posts is flanked on the left by a pair of 6/6 double-hung windows and on the right by a three-bay, screened porch with floating rectangle ornament in transom. A small, wood-framed lattice grill attic vent is centered at the ridge of the roof.   |            |          |   |
| 344. | 121 W. 8TH STREET   | CRAFTSMAN  | CA. 1925 | C |
|      | One-story, wood-frame and stucco house with gable front and back, and small gable set to the right of the house as a front porch, supported by two massive, tapered, stucco columns and a low wall. The entry has a 4-light/1-panel door and a pair of 1/1 double-hung windows to the right; a pair of 1/1 double-hung windows are to the left of the front porch.  |            |          |   |
| 345. | 123 W. 8TH STREET   | CRAFTSMAN  | CA. 1926 | C |
|      | Single-story stucco house with gables front and rear, and a smaller gable set to the right, supported by square stucco columns and low wall, forms a screened porch. The entry door has four lights over a single panel, and windows are 1/1 double-hung.   |            |          |   |
| 346. | 125 W. 8TH STREET   | OTHER      | CA. 1942 | C |
|      | One-story, wood-frame house, clad in asbestos siding, with small hip-roof extension on the right side. The three-bay porch to the left side is supported by cast-iron ornamental posts. The entry door is on the right side of the porch, with large horizontal window and smaller sidelights each side. A pair of 6/6 double-hung windows is centered on the right side extension.   |            |          |   |



United States Department of the Interior  
National Park Service

National Register of Historic Places  
Continuation Sheet

Section number 7 Page 53 - NORTH MAIN DISTRICT, HATTIESBURG, MISS.

- | Section number | Address   | Style      | CA.      | Condition |
|----------------|---|------------|----------|-----------|
| 347.           | 128 W. 8TH STREET   | QUEEN ANNE | CA. 1910 | C         |
|                | Two-story, wood-frame house with large hipped roof with gables and hipped extensions front and sides. A large, three-window dormer is centered in the main hip, with small triangular-light dormers in the flanking hip roofs. Three brick Queen Anne chimneys project above the roofs. The house is wrapped on three sides by a porch supported by Ionic columns with a projection at the entry bay. The recessed entrance has a 1-light/2-panel door with transom and sidelights, and two 1/1 double-hung windows on each side. A carport is on the left. |            |          |           |
| 348.           | 129 W. 8TH STREET   | QUEEN ANNE | CA. 1900 | C         |
|                | One-story, wood-frame, brick-veneer house with main hip and gable ends each side facing front. Two Queen Anne stuccoed chimneys project each side of roof. The independently roofed front porch is supported by eight brick posts. Windows are 2/2, and the non-original front door has fifteen lights.   |            |          |           |
| 349.           | 131 W. 8TH STREET   | QUEEN ANNE | CA. 1910 | C         |
|                | Massive, two-story wood framed and sided house with jerkin head and long ornamental brackets under the projecting eaves of the front. The second-floor balcony roof is supported by square, tapered wood posts projecting at the center three bays. Two bays on the right are screened. A stuccoed chimney projects above the right side of the roof. [Photo 27 of 27]  |            |          |           |
| 350.           | 132 W. 8TH STREET   | OTHER      | CA. 1945 | NC        |
|                | Two-story, wood-frame house with gable ends front and back. The front screened porch is set on the right of the house, with a 15-light front door and 6/6 windows.  |            |          |           |
| 351.           | 134 W. 8TH STREET   | OTHER      | CA. 1953 | NC        |
|                | Single-story, slab-on-grade, brick-veneer house with three view lights in the front door, 2/2 aluminum frame windows, and a detached carport at the right.  |            |          |           |
| 352.           | 135 W. 8TH STREET   | CRAFTSMAN  | CA. 1928 | C         |
|                | Two-story, wood-frame, brick-veneered house with six brick posts supporting the front porch. The jerkin-head roof has a pair of 6/1 double-hung windows in the gable end. The centered entry has three 6/1 double-hung windows on each side. A shed dormer is on the right, and a carport is attached to the left side.   |            |          |           |
| 353.           | 136 W. 8TH STREET   | CRAFTSMAN  | CA. 1953 | NC        |
|                | Single-story, cement-block house with low-pitched gable roof, six-panel front door under thin-post entry portico, flanked each side by 20-light metal-frame windows.  |            |          |           |
| 354.           | 138 W. 8TH STREET   | CRAFTSMAN  | CA. 1944 | NC        |
|                | One-story, wood-frame, asbestos-sided double house with gable roof, 4/1 double-hung windows, and a flat-roofed front porch, supported by thin, ornamental iron posts.   |            |          |           |



United States Department of the Interior  
National Park Service

National Register of Historic Places  
Continuation Sheet

Section number 8 Page 2 - NORTH MAIN DISTRICT, HATTIESBURG, MISS.

providing an economic stimulus for the area. Lumbering reached its peak in 1919 as the virgin forest dwindled at an alarming rate. That same year, Camp Shelby was deactivated. In the post-World War I decade, growth accelerated until the impact of the Great Depression, which was felt until the outbreak of World War II and the reactivation of Camp Shelby.

Development of the North Main District parallels this historic growth and helps to understand the history of the city by illuminating the impact of architectural styles on the city.

The major architectural styles represented are the Queen Anne, Craftsman, and Colonial Revival. A few examples are found of the Tudor, Mediterranean, and Renaissance, which complement the more predominant styles of the district. Generally, the buildings are modest interpretations of these nationally prevalent styles. Four exceptions are:

848 Main, Old Hattiesburg High School, a large, 1921 Tudor Revival building, individually listed on the National Register in 1987;

1028 Main, a well-detailed, large Colonial Revival residence, built circa 1900 [Photo 10 of 27];

128 W. 8th Street, a picturesque, circa 1910 Queen Anne cottage; and

301 W. 7th Street, Jeff Davis Elementary School, built in 1928 in the Spanish Revival style [Photo 26 of 27].

It is likely that most of the elements in the district were built without the assistance of an architect. Several builders are listed in Hattiesburg directories between 1905 and 1941--fifteen in 1905, nine in 1921, two in 1927, eleven in 1929, three in 1935, four in 1937, seven in 1939, and nine in 1941. Local contractor Wesley M. Wright advertised in 1939 that he provided home designs and had been in business since 1910. Messengale & McIntosh was perhaps the city's largest contractor in its early years.

Possibly some of the elements along Main Street were architect designed. City directories from 1905 to 1941 list nine local architects practicing. Additionally, it is known that architects from New Orleans, Louisiana; Meridian, Mississippi; and Knoxville, Tennessee, also worked in Hattiesburg.

The date of 1896 was chosen as the beginning date of the period of significance because it was at this time the district was first subdivided and it is the date from which the city really began to grow, with the anticipation of the arrival of the Gulf & Ship Island Railroad in 1897. The end date of 1942 was chosen as it is



United States Department of the Interior  
National Park Service

National Register of Historic Places  
Continuation Sheet

Section number 8 Page 3 - NORTH MAIN DISTRICT, HATTIESBURG, MISS.

---

the fifty-year criteria date established by the National Park Service. Between these dates, the architecture of the district reflects the historical pattern of the city's development and the broad patterns of architectural taste as interpreted by a local lumbering economy. Contributing elements constructed during this period of significance reflect an integrity of design, materials, and workmanship, invoking the aesthetic sense of Hattiesburg's Golden Era.

Subdivided at the end of the nineteenth century to meet the increased demand for housing, the North Main District has a significant number of elements from its formative years. In fact, over 25% of the elements in the district were built during the first five years of this century. That percentage rises to 37% by 1910. After this initial rapid growth, construction in the district slowed as other neighborhoods such as the Oaks began to develop. During this decade, the building stock increased only by 7%. During the 1920s, development increased again, with 28% of the extant houses being built. The Great Depression caused another decline in growth, with only a 9% increase.

The vast majority of the houses in the district were built for middle-class, blue-collar workers. These cottages and bungalows reflect the impact on housing of national trends previously discussed. Some of the elements (9%) are two-stories and larger than the typical residence. These elements are primarily found on Main Street, considered to be more prestigious than other streets in the district. Although larger in scale, these residences relate well to the detail and style of the other houses in the district.



United States Department of the Interior  
National Park Service

National Register of Historic Places  
Continuation Sheet

Section number 9 Page 2 - NORTH MAIN DISTRICT, HATTIESBURG, MISS.

Cook, Jody. "National Register of Historic Places Inventory Forms-Nomination Forms," for Hattiesburg Historic Neighborhood District and Hub City Historic District; Mississippi Department of Archives and History, 1980.

Esarey, Thomas. The Esarey Collection; Historic Moments of Early Hattiesburg. Hattiesburg Area Historical Society, 1973-1977.

Gowans, Alan. The Comfortable House. Cambridge, Mass.: M.I.T. Press, 1986.

Hattiesburg City Directory. Hattiesburg, Miss.: Hattiesburg City Directory Co., 1910.

Hattiesburg City Directory. Memphis, Tenn.: R.I. Polk and Co., 1918, 1921, 1927, 1929, 1935, 1937, 1939, 1941.

Hattiesburg (Mississippi) Public Library. Subject files on Hattiesburg.

Historic Hattiesburg. Hattiesburg, Miss.: Department of Planning & Community Development, Neighborhood Development District, City of Hattiesburg, nd.

Holt, David. Along the Line of the Mobile, Jackson, and Kansas City Railroad. Mobile, Ala.: Commercial Printing Co., n.d.

Incorporation Dates of All Towns and Cities in Mississippi. Federal Writers Project, 1937.

McCarthy, Kenneth, G., Jr. Hattiesburg A Pictorial History. Hattiesburg, Miss: Woodland Enterprises, 1989.

McLemore, Richard A., ed. A History of Mississippi, Vol. I. Hattiesburg: University & College Press of Mississippi, 1973.

Odom, Mackie. "The Introduction and Expansion of Railroad Lines in Mississippi, 1830-1973." Mississippi Geographer II: 51-59.

Price, David S. "The Mississippi Central Railroad: An Historical Sketch." The Sandhouse II: 3-7.

Robertson, Otis, comp. and ed. Facts about Hattiesburg. Hattiesburg: Progress Book and Job Print, 1898.

Rogers, Charles B., comp. Hattiesburg City Directory. Hattiesburg: The Daily Progress, 1905.



United States Department of the Interior  
National Park Service

National Register of Historic Places  
Continuation Sheet

Section number 9 Page 3 - NORTH MAIN DISTRICT, HATTIESBURG, MISS.

---

Rowe, Melodia B. Captain Jones - The Biography of a Builder. Hamilton, Ohio: Hill-Brown Printing Co., 1942.

Rowland, Dunbar, ed. Encyclopedia of Mississippi History, Vol. III. Atlanta, Ga.: Southern Historical Publishing Assoc., 1907.

Rowland, Dunbar. History of Mississippi, the Heart of the South. Vol. II. Chicago-Jackson: S.J. Clarke Publishing Co., 1925.

Sanborn Insurance Company Maps of Hattiesburg, Mississippi, for the years 1898, 1903, 1906, 1910, 1915, 1925, 1931, 1961. New York: Sanborn Map Company.

Source Material for Mississippi. Forrest County, Vol. 18, part 1. Federal Writers Project, 1936-39.

Sparks, William H. The Memories of 50 Years. Philadelphia: Claxton, Remsen and Haffelfinger; Macon, Ga.: J.W. Burke and Co., 1870.

Thompson, Ray. "Gulf and Ship Island Railroad." Down South (September-October 1964): 5.

United States Bureau of the Census. Population Schedules, Forrest Co., Mississippi, 1890, 1900, 1910, 1920, 1930.

Watson, G.R. Historic Hattiesburg. Hattiesburg, Miss.: privately printed, 1974.



United States Department of the Interior  
National Park Service

**National Register of Historic Places  
Continuation Sheet**

North Main Street Historic District  
Hattiesburg, Forrest Co., MS

Section number 10 Page 1

---

Boundary Justification

The boundaries of the district are drawn so as to include as many elements as possible of significance and integrity that define the district's character. The boundaries are also drawn in such a manner as to define a cohesive sense of time and place, distinguished from adjacent historic and non-historic areas. North of the district, the character of the city's fabric changes radically, with recent construction and an industrial plant. To the east of the district is the Illinois Central Railroad line and associated businesses. The residential area between the railroad and the district contains historic elements which have lost their integrity due to alterations or deterioration, resulting in an east boundary that closely follows Main Street, despite the fact that historically the North Main Street neighborhood extended to the rail line. To the south, the natural boundary of Gordon's Creek separates the district from the neighborhood to the south that contains generally a younger housing stock (1930s). Louise Street is historically part of the North Main neighborhood, but was excluded due to loss of integrity and numerous non-historic elements. The southwest corner of the district nearly abuts the Hub City Historic District. The western boundary is drawn very irregularly due to loss of integrity of the neighborhood's elements in this direction.



**United States Department of the Interior  
National Park Service**

**National Register of Historic Places  
Continuation Sheet**

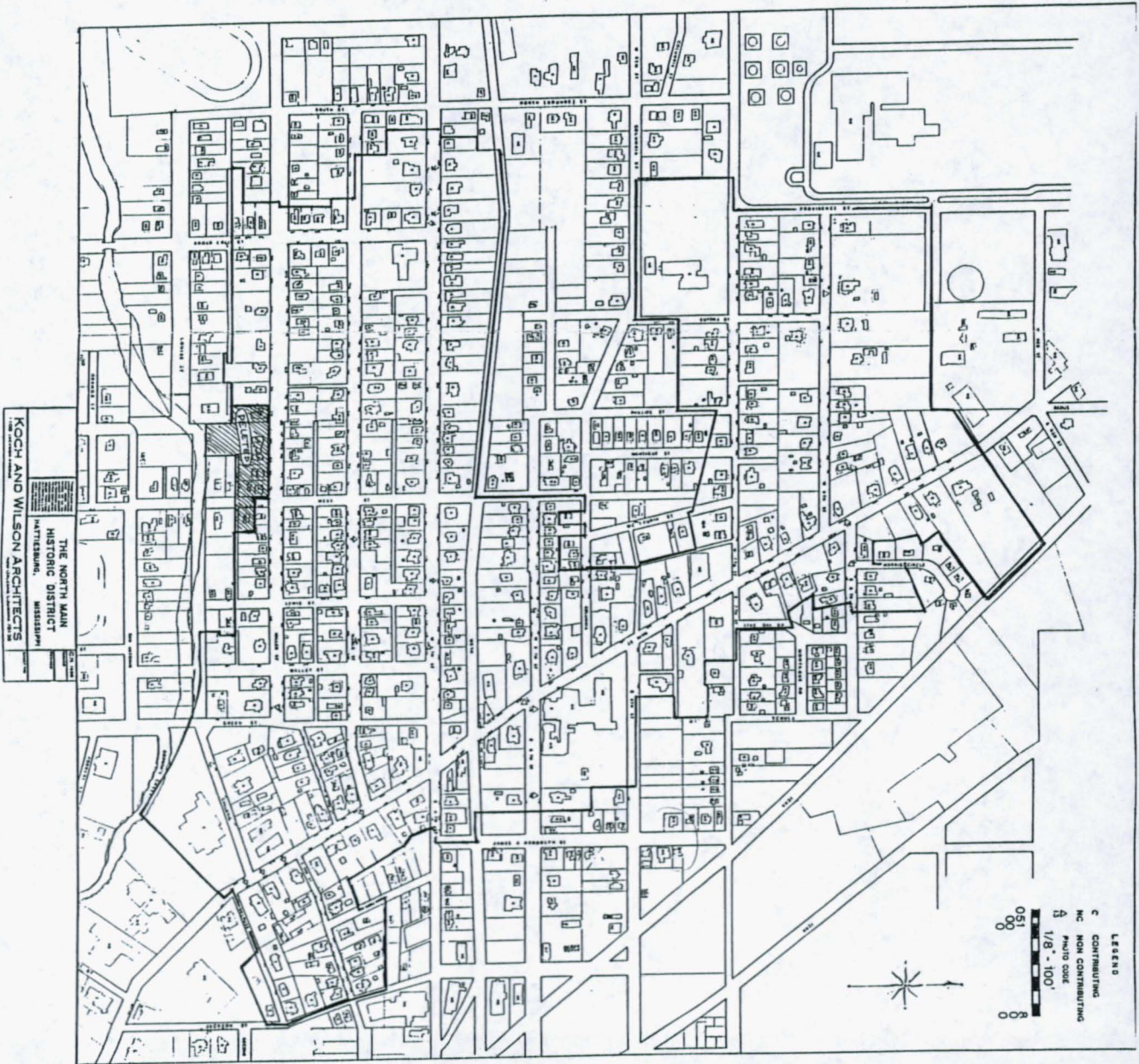
Section number PHOTOS Page 1 NORTH MAIN HISTORIC DISTRICT, HATTIESBURG, MISS.

The following information is for all photographs:

- (1) Name of Property: See below
- (2) Location: Hattiesburg, Forrest County, Mississippi
- (3) Photographer: Robert J. Cangelosi, Jr.
- (4) Date of Photograph: May 1990, except Photo 22: June 1991 and  
Photos 3, 5, & 19: June 1992
- (5) Location of Original Negative: Mississippi Department of Archives and History
- (6) Description of View: See below
- (7) Photograph Number: See below and individual photo

<u>Photo #</u>	<u>Name of Property</u>	<u>View</u>
1 of 27	123 COLLEGE	STREET ELEVATION
2 of 27	130 EUROPA	STREET ELEVATION
3 of 27	EUROPA, CORNER W. 8TH	LOOKING NORTHEAST
4 of 27	205 MABEL	STREET ELEVATION
5 of 27	300 BLOCK MABEL	LOOKING SOUTHEAST
6 of 27	853 MAIN	STREET ELEVATION
7 of 27	859 MAIN	STREET ELEVATION
8 of 27	867 MAIN	STREET ELEVATION
9 of 27	920 MAIN	STREET ELEVATION
10 of 27	1028 MAIN	STREET ELEVATION
11 of 27	1108 MAIN	STREET ELEVATION
12 of 27	1111 MAIN	STREET ELEVATION
13 of 27	1122 MAIN	STREET ELEVATION
14 of 27	1223 MAIN	STREET ELEVATION
15 of 27	1400 MAIN	STREET ELEVATION
16 of 27	118 MILLER	STREET ELEVATION
17 of 27	108 WALLEY	STREET ELEVATION
18 of 27	128 E. 5TH STREET	STREET ELEVATION
19 of 27	100 BLOCK E. 8TH	LOOKING EAST
20 of 27	202 W. 4TH STREET	STREET ELEVATION
21 of 27	303 W. 4TH STREET	STREET ELEVATION
22 of 27	528 W. 4TH STREET	STREET ELEVATION
23 of 27	533 W. 4TH STREET	STREET ELEVATION
24 of 27	537 W. 4TH STREET	STREET ELEVATION
25 of 27	103 W. 5TH STREET	STREET ELEVATION
26 of 27	301 W. 7TH STREET	STREET ELEVATION
27 of 27	131 W. 8TH STREET	STREET ELEVATION

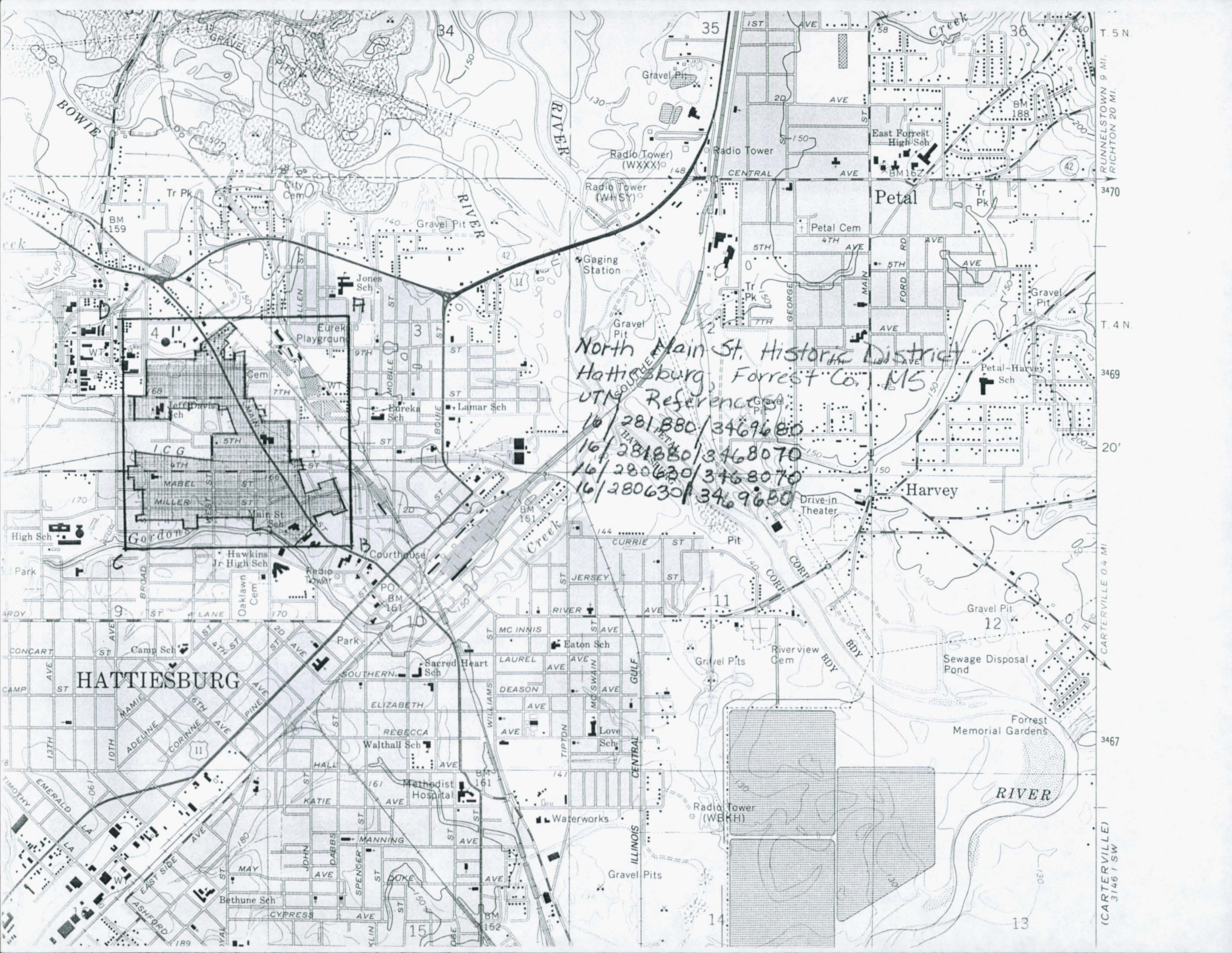




THE NORTH MAIN  
 HISTORIC DISTRICT  
 NATCHEZ, MISSISSIPPI  
 KOCH AND WILSON ARCHITECTS  
 1001 N. MAIN ST. NATCHEZ, MISSISSIPPI 39101

LEGEND  
 C CONTRIBUTING  
 NC NON CONTRIBUTING  
 A PAVED SIDE  
 1/8" = 100'  
 0 50 100





North Main St. Historic District  
Hattiesburg, Forrest Co., MS

UTM References:  
16/281880/3469680  
16/281880/3468070  
16/280620/3468070  
16/280630/3469680

HATTIESBURG

Petal

Harvey

RIVER

T 5 N  
RUNNELSTOWN 9 MI.  
RICHTON 20 MI.  
3470  
T 4 N  
3469  
20'  
CARTERVILLE 0.4 MI.  
3467  
(CARTERVILLE)  
31461 SW







Page 1 OF 27

N. Main St. Hist. Dist

HATTIESBURG, MS.







Page 2 of 27

N. Main St. H 157. Dist.

HATTI ESPUNGA, MS.







PHOTO 3 OF 27

N. MAIN ST. HIST. DIST.

HATTESBERG, MS.







Photo 4 OF 27

N. Main St. His. D.S.

LATTICEWORK, MS.







Page 5 OF 27

N. MAIN ST. HIST. DIST.

HARRINGTON, Ms.







PHOTO 6 OF 27

N. MAIN St. Hist. Dist.

HATTIESBURG, MS.







PHOTO 7 OF 27

N. Main St. Hist. Dist.

HATFIELD, Ms





867



PHOTO 8 OF 27

N. MAIN ST. HIST. DIST.

HATTI ESPURGO, MS.







PHOTO 9 OF 27

N. MAIWA S. HISS. DIST.  
HATTIE S. BORG, MS.





1025



10 OF 27

N. MAIN ST. HIST. DIST.

HAY 15530026, M/S.







11 OF 27

N. MAIU S. Hist. Dis.

HATTIESBURG, MS.





MAIN STREET  
BAPTIST CHURCH



Photo 12 OF 27

N. Main St. Hist. Dist

HATTIESBURG, MS.





13 OF 27

N. Main of High. Dist.

HATTIESBURG, MS.





Photo 14 of 27

N. Main St. Hist. Dist.

HATFIELD, Ms.





15 OF 27

N. Main St. Hist. Dist.

HARRISBURG, MS.





16 OF 27

11. Main St. Hist. Dist.

HATTESBROUGH, Ms.





Photo 17 OF 27

N. MAIN ST. HIST. DIST.

HATTIES BOICE, MS.





18 OF 27

H. MAIN S. HIST. D. M.  
H. MAIN S. HIST. D. M.  
H. MAIN S. HIST. D. M.





PHOTO 19 OF 27

N. Main St. Hist. Dist.

HATTISBURG. MS.





20 OF 27

Y. L. MAIN S, Hist. Dist

HATTILSPRING, Ms.





21 OF 27

N. Main St. Hous. Dist.

HATIERBURG, ME.





22 OF 27

N. Main St. Hist Dist

HANNAH BORG, Ms.





23 of 27

XI, MAIN ST. HIST. DIST.

HATTI ESTEROG, MS.





27 07 27

N. MAIN ST. HISTORIC DISTRICT

HATTI ESTBUNG, Ms.

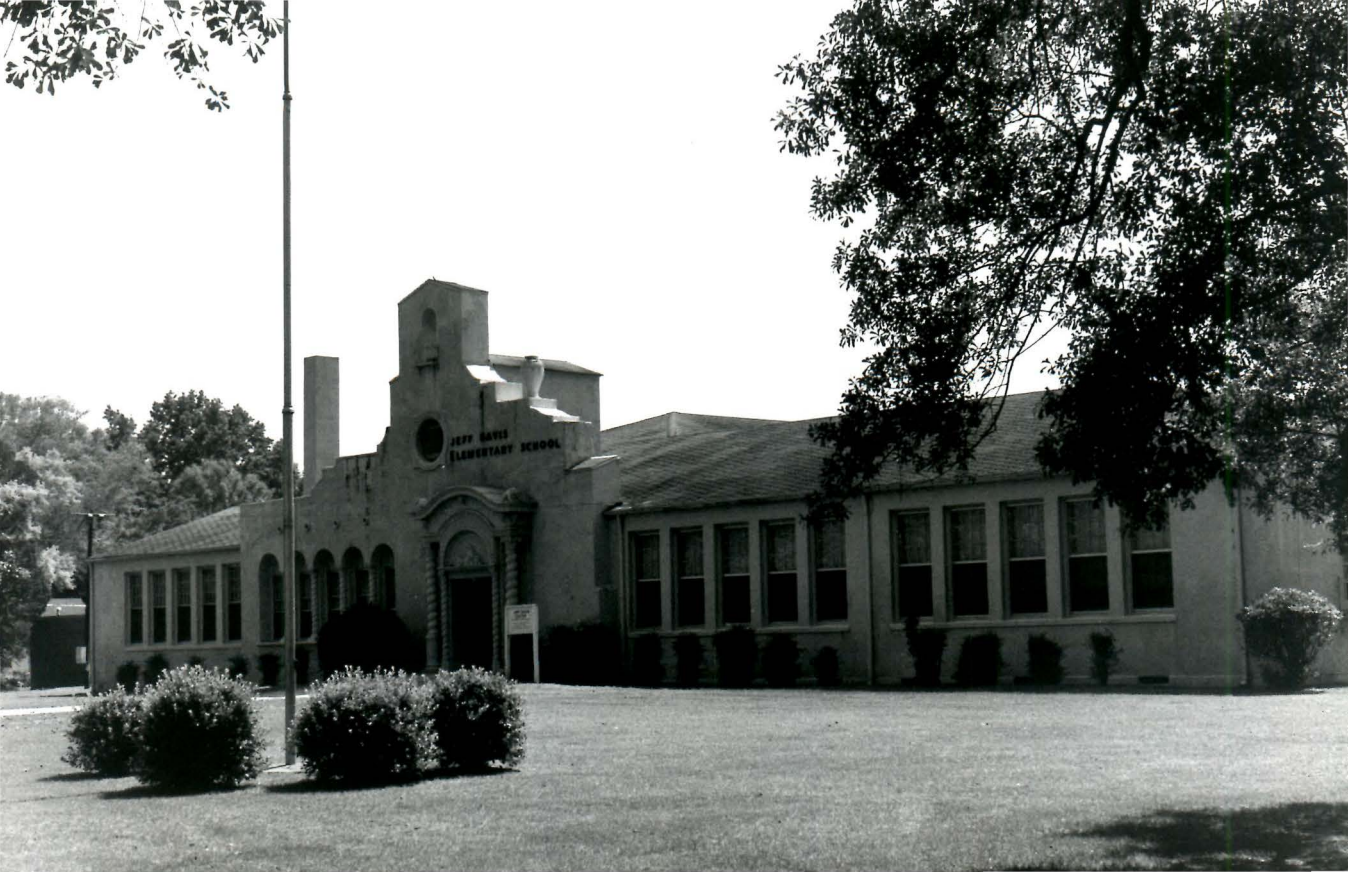




25 OF 27

North MAIN ST. Historic District  
Hart's FURCO, 1908.





JEFF DAVIS  
ELEMENTARY SCHOOL

Box 26 of 27  
NORTH MAINE ST. HISTORIC DISTRICT

HATTIERBURG, MS.





27 OF 27

NORTH MAIN ST HISTORIC DISTRICT

17 LISBURN MS