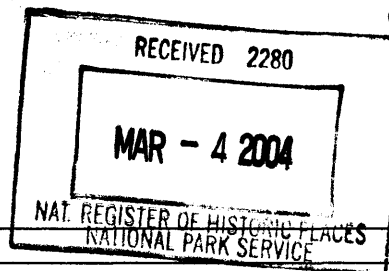


NPS Form 10-900  
(Rev. 10-90)  
United States Department of the Interior  
National Park Service

OMB No. 1024-0018



# **NATIONAL REGISTER OF HISTORIC PLACES REGISTRATION FORM**

## **1. Name of Property**

historic name: McComb Downtown Historic District  
other names/site number:

## **2. Location**

street & number: McComb Downtown Historic District  
city or town: McComb  
state: Mississippi code: MS county: Pike code: 113 zip code: 39648

## **3. State/Federal Agency Certification**

As the designated authority under the National Historic Preservation Act of 1966, as amended, I hereby certify that this X nomination        request for determination of eligibility meets the documentation standards for registering properties in the National Register of Historic Places and meets the procedural and professional requirements set forth in 36 CFR Part 60. In my opinion, the property X meets        does not meet the National Register Criteria. I recommend that this property be considered significant        nationally        statewide X locally. (       See continuation sheet for additional comments.)

Kenneth H. P. Paul  
Signature of certifying official

MARCH 2, 2004  
Date

Deputy State Historic Preservation Officer  
State or Federal agency and bureau

In my opinion, the property        meets        does not meet the National Register criteria. (       See continuation sheet for additional comments.)

        
Signature of commenting or other official

        
Date

        
State or Federal agency and bureau

## **4. National Park Service Certification**

I, hereby certify that this property is:  
✓ entered in the National Register,  
       See continuation sheet.  
       determined eligible for the  
National Register  
       See continuation sheet.  
       determined not eligible for the  
National Register  
       removed from the National Register  
       other (explain):       

Edson Beall  
Signature of the Keeper

4/14/04  
Date of Action

**5. Classification**

<b>Ownership of Property:</b>	Private	<b>Number of Resources within Property:</b> (Do not include previously listed resources in the count)		
	Public-local			
<b>Category of Property:</b>	District	Contributing	Noncontributing	
		39	16	buildings
				sites
				structures
		1		objects
		40	16	Total

**Name of related multiple property listing**  
(Enter "N/A" if property is not part of a multiple property listing.)

**Number of contributing resources previously listed  
in the National Register**

none

**6. Function or Use**

<b>Historic Functions:</b>	DOMESTIC: hotel	GOVERNMENT: city hall
	DOMESTIC: single dwelling	GOVERNMENT: fire station
	COMMERCE/TRADE: business	GOVERNMENT: government office
	COMMERCE/TRADE: professional	RECREATION & CULTURE: theatre
	COMMERCE/TRADE: organization	RECREATION & CULTURE: hall
	COMMERCE/TRADE: financial institution	RECREATION & CULTURE: music facility
	COMMERCE/TRADE: specialty store	INDUSTRY/PROCESSING: manufacturing facility
	COMMERCE/TRADE: department store	HEALTH CARE: clinic
	COMMERCE/TRADE: restaurant	HEALTH CARE: medical business
	SOCIAL: meeting hall	RECREATION & CULTURE: monument
	SOCIAL: clubhouse	
<b>Current Functions:</b>	DOMESTIC: hotel	GOVERNMENT: city hall
	COMMERCE/TRADE: business	GOVERNMENT: fire station
	COMMERCE/TRADE: professional	GOVERNMENT: government office
	COMMERCE/TRADE: organization	EDUCATION: school
	COMMERCE/TRADE: financial institution	RECREATION & CULTURE: theatre
	COMMERCE/TRADE: specialty store	RECREATION & CULTURE: hall
	COMMERCE/TRADE: department store	HEALTH CARE: medical business
	COMMERCE/TRADE: restaurant	LANDSCAPE: parking lot
	COMMERCE/TRADE: warehouse	RECREATION & CULTURE: monument
	SOCIAL: meeting hall	
	SOCIAL: civic	

**7. Description****Architectural Classification(s):**

Late 19<sup>th</sup> and 20<sup>th</sup> Century Revivals

Late 19<sup>th</sup> and Early 20<sup>th</sup> Century American Movements

No style

**Materials:**

foundation: brick, concrete  
 roof: built up, asphalt shingles, flat, metal  
 walls: brick, stucco, concrete block, vinyl siding  
 other:

**Narrative Description:**

See Continuation Sheets

**8. Statement of Significance****Applicable National Register Criteria**

- X     **A**     Property is associated with events that have made a significant contribution to the broad patterns of our history.
- B**     Property is associated with the lives of persons significant in our past.
- X     **C**     Property embodies the distinctive characteristics of a type, period, or method of construction or represents the work of a master, or possesses high artistic values, or represents a significant and distinguishable entity whose components lack individual distinction.
- D**     Property has yielded, or is likely to yield information important in prehistory or history.

**Areas of Significance**

Architecture  
Commerce

**Period of Significance**

1890-1953

**Significant Dates**

1904, 1911

**Criteria Considerations:**

Property is:

- \_\_\_ **A**     owned by a religious institution or used for religious purposes.
- \_\_\_ **B**     removed from its original location.
- \_\_\_ **C**     a birthplace or a grave.
- \_\_\_ **D**     a cemetery.
- \_\_\_ **E**     a reconstructed building, object, or structure.
- \_\_\_ **F**     a commemorative property.
- \_\_\_ **G**     less than 50 years of age or achieved significance within the past 50 years.

**Significant Person(s)****Cultural Affiliation(s)****Architect/Builder**

**Narrative Statement of Significance:**     See continuation sheets.

**9. Major Bibliographical References**

**Bibliography**     See continuation sheet.

**Previous documentation on file (NPS)**

- \_\_\_ preliminary determination of individual listing (36 CFR 67) has been requested.
- \_\_\_ previously listed in the National Register
- \_\_\_ previously determined eligible by the National Register
- \_\_\_ designated a National Historic Landmark
- \_\_\_ recorded by Historic American Buildings Survey  
# \_\_\_\_\_
- \_\_\_ recorded by Historic American Engineering Record  
# \_\_\_\_\_

**Primary Location of Additional Data**

- X   State Historic Preservation Office
- \_\_\_ Other State agency
- \_\_\_ Federal agency
- \_\_\_ Local government
- \_\_\_ University
- \_\_\_ Other

Name of repository:

---

**10. Geographical Data**

---

Acreage of Property: approximately 14 acres

UTM References:	<u>Zone</u>	<u>Easting</u>	<u>Northing</u>		<u>Zone</u>	<u>Easting</u>	<u>Northing</u>
A	15	742390	3459360	C	15	742740	3459000
B	15	742740	3459440	D	15	742460	3459000

**Verbal Boundary Description** See continuation sheet.

**Boundary Justification:** See continuation sheet.

---

**11. Form Prepared By**

---

name/title:	Letitia Parham Wright	date:	October 17, 2003
organization:		telephone:	662-844-9200
street & number:	751 DeBeau Drive	zip code:	38804
city or town:	Tupelo	state:	MS

Edited and revised by Richard J. Cawthon, Chief Architectural Historian,  
Mississippi Department of Archives and History  
P. O. Box 571, Jackson, MS 39205-0571

---

**Additional Documentation**

---

Submit the following items with the completed form:

Continuation Sheets

Maps

A USGS map (7.5 or 15 minute series) indicating the property's location.

A sketch map for historic districts and properties having large acreage or numerous resources.

Photographs

Representative black and white photographs of the property.

Additional items (Check with the SHPO or FPO for any additional items)

---

**Property Owner(s)**

---

name:		telephone:	
street & number:		zip code:	
city or town:	state:		

**Paperwork Reduction Act Statement:** This information is being collected for applications to the National Register of Historic Places to nominate properties for listing or determine eligibility for listing, to list properties, and to amend existing listings. Response to this request is required to obtain a benefit in accordance with the National Historic Preservation Act, as amended (16 U.S.C. 470 et seq.).

**Estimated Burden Statement:** Public reporting burden for this form is estimated to average 18.1 hours per response including the time for reviewing instructions, gathering and maintaining data, and completing and reviewing the form. Direct comments regarding this burden estimate or any aspect of this form to the Chief, Administrative Services Division, National Park Service, P.O. Box 37127, Washington, DC 20013-7127; and the Office of Management and Budget, Paperwork Reductions Projects (1024-0018), Washington, DC 20503.

**United States Department of the Interior  
National Park Service**

**NATIONAL REGISTER OF HISTORIC PLACES  
CONTINUATION SHEET**

Section: 7

Page: 1

McComb Downtown Historic District  
Pike County, Mississippi

---

**Narrative Description**

McComb Downtown Historic District is a contiguous group of commercial, civic, and professional buildings that constitute the historic central business district of McComb, a small city with a population of slightly more than 13,000, which is the largest of several municipalities in Pike County, Mississippi.

The district consists largely of commercial buildings along two blocks of Main Street (which runs east and west through the center of the district), and two blocks of Broadway (the city's major north-south thoroughfare), along with some adjacent properties on State Street to the north, Canal Street to the south, Front Street to the east, and Third Street and Delaware Avenue, which meet Broadway and Main Street at the major intersection called Five Points. This intersection, where the J. J. White Memorial Presbyterian Church stands at the head of Main Street, is the visual center of the district.

A railroad corridor with vehicular and pedestrian overpasses is just to the east of the district. Much of the area along the railroad corridor, including the depot and several nearby commercial buildings, are included within the Kramertown-Railroad Historic District (listed on the National Register in 1980), which is immediately adjacent to the eastern edge of the McComb Downtown Historic District. To the west of the Downtown district are substantial residential areas. To the north and south of the district are less intact commercial areas.

The majority of the buildings in the McComb Downtown Historic District are brick commercial buildings of one, two, or three stories, mostly dating from between 1890 and 1940, with a few more recent buildings mixed among them. Among the most prominent historic commercial buildings are the McColgan Hotel at 200-214 Main Street [#35], the Caston-Johnson Building at 224-226 Main Street [#45], the City Drug Store building at 228 Main Street [#48], and the large four-story building at 230 Main Street [#49]. West of Broadway are several important civic and institutional buildings, most notably the City Hall (1913) [#52], the Fire Station (1928) [#53], and the J. J. White Memorial Presbyterian Church (1921) [#51].

During the 1970s and 1980s, the area experienced economic changes like those of many other small towns, with retail activity moving to a shopping mall area north of the city. Many of the commercial buildings in the district underwent alterations during this period, receiving metal façade covers or metal awnings. Many of these changes are now being reversed.

**United States Department of the Interior  
National Park Service**

**NATIONAL REGISTER OF HISTORIC PLACES  
CONTINUATION SHEET**

Section: 7

Page: 2

McComb Downtown Historic District  
Pike County, Mississippi

---

**Inventory of Resources**

The inventory is arranged alphabetically by street name in ascending numerical order. Buildings are classified as "contributing" (C) or "non-contributing" (NC) to the historic character of the district.

**Broadway, North**

1. (C) 101-103 North Broadway c. 1940  
Irregular, one story, painted masonry, commercial building has a flat roof and notched parapet. The three bay southeast façade has a slightly recessed double leaf entry flanked by two large display windows. Single light transoms top both windows and doors. The five bay east elevation has a single deeply recessed entry in the fourth bay from south, which has slanted fixed glass single light windows, transoms and an aluminum and glass commercial door. A band of vertical windows stretch above large fixed window in the third bay and above bricked in portions of the other two bays. Decorative brick in a basket weave pattern fill panels in the parapet wall. Rough face brick is in the south bay from an obvious alteration.
2. (C) 105-107 North Broadway c. 1920  
Two-story, dark red brick, rectangular commercial building with notched parapet. The first floor consists of three bays with single leaf entries on either side of a large single light fixed glass window. A metal, mansard roof projecting canopy has been added above the first floor. Each door has a single light transom. A single stone band separates the first floor from the second visually and matches stone coping atop the parapet as well as keystones in the flat, brick lintels. The second floor has three fixed glass windows with applied wrought iron trim border. Brickwork in a basket weave design is at parapet level.
3. (C) 110-112 North Broadway c. 1930  
Two-story three bay commercial building has flat parapet and sloping, flat roof. Constructed of brick with random laid limestone veneer, the eclectic style has Tudor or Gothic overtones. The first floor has three entries. The left bay recessed single leaf entry gives access to the second floor. A cast pointed arch has blind tracery and cast rope surround. The door is wood with single light. A border in the surround has alternating diamonds and circles. Verde marble wainscoting flanks the entry. The center bay and the right bay have recessed double swing aluminum doors with larger display windows resting on knee walls of thin brick. Metal panels are applied above the entry level with cast iron borders of scalloped medallions of acanthus leaves. The second floor has three sets of assorted combinations of metal casement windows. Diamond pane leaded glass transoms top each pair of windows. Cast iron swag with festoons tops the second floor windows. Cast iron panels divide the two floors. Three cast stone shields are placed symmetrically along the parapet wall.  
[PHOTO #6]
4. (C) 111 North Broadway  
Two-Story commercial building with Beaux Arts detailing constructed of brick, veneered with yellow brick topped by a flat parapet and cast masonry coping. Brick pilasters form the corners and dissect the center of the building projecting above the parapet and capped by cast stone. The first floor has two bays with two single entries on the left bay. Of the two doors, the left door gives access to the second floor. Both doors are aluminum and glass double swing. The right bay has a tripartite fixed window with applied wood panels above and below. Four six light transoms top the doors and window. The base of the building has stone to the water table. Visually dividing the first and second floors is a cast stone band ornamented with medallions. The second floor has two sets of three, six light over ten light casement windows. Swags with a cartouche are in each of the recessed sections above the windows. [PHOTO #5]

**United States Department of the Interior  
National Park Service**

**NATIONAL REGISTER OF HISTORIC PLACES  
CONTINUATION SHEET**

Section: 7

Page: 3

McComb Downtown Historic District  
Pike County, Mississippi

---

5. (NC) 113 North Broadway c.1930, façade 1990  
Rectangular one story, three bay, brick veneer, commercial office building has a large canvas canopy spanning the front façade. The left and right bays each have a single leaf entry six panel metal door and flank a large single fixed paned window. The cornice is a wide metal band and the roof appears to be metal.
  
6. (C) 116 North Broadway c.1930  
Large three-story, red brick, commercial building has three bays on each floor. The central bay of the first floor projects slightly and gives access to the second and third floors. Two storefront sections flank the central entrance. As the central bay projects on the second and third floors, Palladian windows are in the left and right bays on the second floor with three arched windows in the left and right bays on the third floor. Windows are 1/1 DHS brick forming the arches over arched windows. Sills are brick. A canvas canopy spans the lower section of the front façade. **[PHOTO #4]**
  
7. (NC) 117 North Broadway c. 1970  
One-story, four bay brick veneer commercial building has a flat metal roof and metal cornice. A single leaf nine light entry door is in the second bay from the left with vertical sliding windows in the remaining three bays. A barber pole is located to the right of the entry door.
  
8. (NC) 119 North Broadway c. 1975  
One story, two bay, rectangular, flat-roofed commercial building is fronted with an orange brick veneer. The left bay houses a single leaf six panel metal entry door while the right bay has a semi-circular or bow window of five, four light fixed glass panels. A metal standing seam cantilevered mansard canopy covers the window and the door.
  
9. (C) 120 North Broadway 1920  
**Masonic Temple**  
Large three-story rectangular, yellow brick commercial building with two storefront bays on the first floor is symmetrical in design. The first floor is divided into two bays and with three granite block piers rising from street level to the second floor. The far left side of the columned recessed, left bay has a single leaf nine-light wood entry door to the upper floors, which has a three-step rise with a wood newel and banister. The right side of the left bay has a double leaf entry of six panel wood doors with sidelights and transom. The right bay fixed glass display window angles to a recessed single leaf entry door. Four pairs of windows with rowlock sills and corner blocks span each the second and third floors designed with nine light over three vertical paned DHS wood windows. Brick pilasters with decorative panels rise from the granite piers at each end of the façade to a flat parapet topped by cast stone coping. A cartouche centers the parapet with a wreath and date, 1920. **[PHOTO #3]**
  
10. (C) 123-125 North Broadway c. 1950  
Two-story red brick commercial building is symmetrical with a pointed parapet with decorative brickwork panels. The roof appears to be flat. Three bays on the first floor house retail space with angled display windows and two aluminum and glass double swing doors with transoms. Corrugated metal sheeting has been across the first floor of the façade. The second floor has three pairs of metal, louvered sash windows.
  
11. (C) 124 North Broadway c.1940  
**Former Drug Store**  
One-story, painted brick, flat-roofed building with stepped parapet has a three bay street façade. The symmetrical structure has a center single leaf entry door with a left sidelight, which is slightly recessed between two, large fixed glass display windows. Pilasters of disengaged columns with rope and bead design anchor each end of the façade and rise to a wide, decorative band above the windows and door. The band's

**United States Department of the Interior  
National Park Service**

**NATIONAL REGISTER OF HISTORIC PLACES  
CONTINUATION SHEET**

Section: 7

Page: 4

McComb Downtown Historic District  
Pike County, Mississippi

garland is a floriated swag with cartouche. An acanthus and fruit medallion is above the columns. Topping the parapet and centered on the parapet rim is a Grecian urn with floral swag beneath and side brackets.

**[PHOTO #2]**

12. (NC) 126 North Broadway c. 1930, altered 2002  
One-story, rectangular painted brick commercial building with partial basement and flat parapet is distinguished by 1/1 fixed panels of glass that wrap from the front façade around to the side elevation. Topping the windows is a hip cantilevered canvas awning. The building has a single leaf entry door of aluminum and glass with a fixed transom. To the rear of the north elevation are four garage type doors.
13. (C) 127-129 North Broadway c. 1930  
**Former McComb Enterprise Journal, Newspaper**  
Two-story Art Deco painted, masonry commercial building has six bays on the first floor four of which are entrances. The left bay has a single aluminum and glass door with transom and side glass panel. The second bay from the left is a double, fixed pane, display window. Stucco divides the next bay entry, which is a single aluminum and glass door with transom and single side glass panel plus a single, fixed glass display window. A central double leaf entry has an Art Deco design in tile on either side of the slightly recessed entry. The last bay has a pair of aluminum doors with blue tile surrounding and in the entry area. The second floor has steel 2/2 DHS with transom windows. An asymmetrical parapet wall spans the right 2/3 of the cornice level with no cornice on the other portion. A projecting cantilevered flat canopy stretches across the front façade between the first two floors.

**Broadway, South**

14. (NC) 100 South Broadway c. 1969  
Large, two-story commercial office and bank building with triangular massing located on corner of five intersections. The irregular structure has double recessed blind arches on the front façade (NE) that form an entry porch. The arches are two-story height and incorporated into the façade design. No windows appear on the first floor of the east façade. The second floor has fixed glass with reflective glazing. Two single leaf entries with cantilevered shingled hip canopies appear on the west façade. The building is painted brick and stucco.
15. (NC) 115 South Broadway c. 1960  
**Economy Inn**  
Two story motor inn is flat roofed and U-shaped with a with flat roof and porte cochere entry. A basement on the west façade has fixed glass and vertical sliding windows. Other windows are vertical and DHS. Doors are hollow core without lights. Decorative concrete blocks face street on west side and a pyramid and angled bands of cast concrete form reversed pyramid porte cochere. The second floor balcony with wood rails provides an overhanging porch for the first floor guest rooms.
16. (C) 125 South Broadway c. 1940  
Rectangular, red brick, two-story building is divided for retail space on the first floor and office space on the second floor. The structure appears to have a flat roof behind the straight parapet wall topped with metal coping. Five bays each form the first floor. The left bay is the single entry aluminum door with transom that gives access to the second floor. Three central bays have storefronts and the right bay has a recessed single leaf aluminum door with painted transom. Six bays on the second level are spaced over the storefronts and entry, each having a pair of 2/1 DHS metal windows.



**United States Department of the Interior  
National Park Service**

**NATIONAL REGISTER OF HISTORIC PLACES  
CONTINUATION SHEET**

Section: 7

Page: 5

McComb Downtown Historic District  
Pike County, Mississippi

---

**Canal Street**

17. (C) 201-203 Canal c. 1930  
**Automobile Dealership**  
Commercial one-story building with barrel vault roof and parapet is located on a corner lot. Two single wood doors with transoms are on the front façade. One garage type door is on the east elevation. Tripartite display windows of fixed glass and transoms are on the north and northeast elevations. Sections of decorative brick forms bulkheads under display windows. A recessed panel-plaque for signage appears under the arched parapet. Brick pilasters rise to the stucco parapet extending above the roofline with cast concrete caps.
18. (C) 205-207 Canal c. 1920  
Commercial two bay brick storefront with traditional two-bay storefront on the left has a stepped parapet with concrete coping. The left three-bay has a center single leaf entry with sidelights and transom flanked by two large fixed pane display windows. The right bay has a single entry on the left bay and a tripartite fixed glass window to the right. Both storefronts have fixed glass transoms that extend over the doors and windows. Horizontal panels of stucco are recessed in the parapet about the transom for signage.
19. (NC) 206-208 Canal c. 1945  
**Former Bus Stop/ Restaurant**  
Concrete block with stucco and brick veneer commercial building has a front gabled metal roof and cornice. The façade is divided into three bays. Existing doors are on left and middle bays. The right door has been sealed.
20. (C) 209 Canal c. 1920  
**Former Coca Cola Bottling Plant**  
One-story three bay, shed roof, painted brick, commercial building with a single leaf entry and one garage-type door in the left bay, an aluminum and glass door with sidelights and transom in the middle bay and a double fixed glass display window in the right bay. The parapet and roof are metal with a metal coping.
- 21A. (C) 209 Canal c. 1920  
Two-story commercial, brick building with no entry on the north façade. The flat roof has a parapet with a solid masonry band and brick dentil trim. The first floor has a tripartite fixed window with reflective glazing. The second floor has three 1/1 DHS metal windows.
- B. (C)  
One-story attached concrete building with garage-type door is painted and has a metal roof and cornice.
22. (NC) 220 Canal c. 1960  
One story, side gabled, brick, commercial building with single four light louvered windows and a single one light wood door on the front façade is located next to an alley and parking. The wide eaves form an entry stoop. The east elevation has one door and two windows. A metal-cantilevered canopy is above the single door.
23. (C) 224 Canal c. 1950  
Rectangular, commercial, flat roof with parapet filling station is located on a corner lot. The three bay structure has two bays with garage doors in the middle and right. The right bay has fixed glass windows on a brick bulkhead with a single glass entry door. A metal canopy extends from the middle of the front façade to the west elevation.

**United States Department of the Interior  
National Park Service**

**NATIONAL REGISTER OF HISTORIC PLACES  
CONTINUATION SHEET**

Section: 7

Page: 6

McComb Downtown Historic District  
Pike County, Mississippi

---

24. (C) 310 Canal c. 1945

**Former County Health Center (City Hall Annex)**

One story gable on hip rear facing T-plan building is constructed of brick with asphalt shingles. The three bay structure is symmetrical. A front facing center gable has two flanking bays, each with four windows. The center bay has a slightly recessed single entry with an aluminum and glass door with transom. Four pilasters divide the projecting gable. Windows are 9/9 DHS with keystone pediment and wood trim.

**Front Street, North**

25. (C) 131 North Front 1920

**Harlan Building**

Two-story, red brick, rectangular commercial building on corner lot with two façades is divided for retail space on the first floor and office or residential space on the second floor. Brick piers rise from the foundation to support a pointed parapet and flat roof. Decorative brick bands of soldier and dentil courses rim the lower parapet of the east and north façades. The east façade has three bays on the first floor with a raised, recessed entrance to the second floor in the left side of the left bay with a single light wood door. A second door to first floor retail space is on the right side of the left bay with a display window between the doors. The central bay has a tripartite display window with an angled bulkhead. Double swing aluminum and glass doors are placed at the left side of the first bay with a four panel fixed glass display window on the right. Transoms are above all first floor bays and appear to be painted. The north façade has a pair of double swing garage door on the right bay and a display window on the left bay. The second floor has 1/1 DHS windows in single and pairs. The south elevation was a common wall for a non-extant building.

**Front Street, South**

26. (C) 120 South Front c. 1940

One-story red brick rectangular building with rear "L" has a flat roof and stepped parapet. The structure is a symmetrical three bay building with the right bay bricked. Two double swing aluminum and glass doors center the middle bay, which has a flat-cantilevered canopy over the slightly recessed entry.

27. (C) 132 South Front c. 1924

Two-story brick and stucco, rectangular, two bay, structure on a corner lot (South Front and Canal) has a flat roof and stepped parapet. A left bay on the first floor of the east façade has a deeply recessed, single light entry door with transom flanked by two angled, fixed pane display windows (the same bay joins and is duplicated on the south façade). The right bay has double garage doors. Transom windows run the length of each bay. Second floor windows are in pairs of 1/1 DHS with arched brick headers, keystones and corner blocks. Sills are cast stone. The parapet wall has a decorative brick panel of contrasting brick in basket weave design inset in a rectangular cast frame. [PHOTO # 21]

**Main Street**

28. (NC) 101 Main c. 1900, altered 1999

Rectangular, two-story, two bay, brick building with basement is on corner lot and has a sloped, flat roof with straight parapet. The first floor has a recessed entry for two single doors. Brick has been applied to the first floor on the right bay with tongue and groove siding on the left bay. AN asphalt mansard canopy is attached above the first floor. Windows on first floor are 1/1 fixed in a band wrapping the corner of the left bay. Second

United States Department of the Interior  
National Park Service

NATIONAL REGISTER OF HISTORIC PLACES  
CONTINUATION SHEET

Section: 7

Page: 7

McComb Downtown Historic District  
Pike County, Mississippi

floor windows have been removed and sealed with wood panels. Decorative brick dentils trim the flat cornice. A basement entrance is located on the east façade with a shed roof addition and a single wood door.

29. (C) 103 Main c. 1900  
One story, three bay storefront brick structure with flat roof and has a flat parapet spanning between extended brick piers. The recessed entry has display windows on a tile bulkhead. The left bay has a window and single light door with transom and a 21 light transom topping the bay; the middle bay is a display window and painted transom; the right bay is a single door with transom, display window and 21 light transom above the bay. Two sections of decorative brick in a basket weave design are located above the transom on the parapet wall.
30. (C) 105 Main c. 1900  
One story, three bay storefront painted brick structure with flat roof has a flat parapet. The recessed single entry is in the center bay and has a single light wood door with transom. Glass display windows are angled and on a paneled wood bulkhead. The parapet has three diamonds spaced symmetrically and a recessed panel for signage.
31. (NC) 107 Main c. 1900  
One story, brick storefront structure with flat roof and flat parapet between extended brick piers. The entry is flush and has a pair of aluminum and glass doors with transom. Plate glass windows on brick bulkheads flank the entry doors. Tongue and groove paneling has been applied above the door and windows.
32. (C) 109 Main c. 1930  
**Palace Theatre**  
Large, rectangular, two to three story, masonry, theatre building with basement is located on a corner lot. The roof is a shed-flat sloping to the rear (South). The front elevation is a symmetrical three bay building with an angled, recessed double leaf entry in the central bay. The left bay has a single fixed light window and aluminum and glass door. A right bay has three panels of glass with transoms and a center door of aluminum and glass. Portions of glass panels of green, black and yellow are visible. The second level has a row of evenly spaced small, square, fixed glass windows. Large sign and marquis are still intact. [PHOTO #20]
33. (C) 110-112 Main c. 1900  
Two-story, four-bay stucco structure with retail space at street level with wood door, entrance to the second floor located on the right bay. The roof is flat with a tall, flat parapet. The first floor left bay has an angled plate glass window on a brick bulkhead. Double doors of wood and glass with a second angled plate glass window on brick bulkhead are in the next two bays. A transom of four 2/2 square windows divides the building visually. The second floor has two pairs of 1/1 DHS windows with boarded round-arched transoms. Cast coping, stepped cornice, arches, and cast triangular designs dominated the second floor façade. [PHOTO #19]
34. (C) 114 Main c. 1890  
Two-story structure on corner lot with basement is constructed of scored masonry with a flat roof and flat parapet. A door to the second floor is sealed wood and placed on the right side of the front façade. The entry has a triangular pediment with pilasters and marble step. The single leaf entry to the first floor is located angled to the corner. Board and batten wood with corrugated metal and two plate glass windows front the lower portion of the building. Second floor windows are combination louvered with four on the front façade and 12 on the west façade. Two doors to the lower levels are on the rear portion of the west façade. [PHOTO #18]

United States Department of the Interior  
National Park Service

NATIONAL REGISTER OF HISTORIC PLACES  
CONTINUATION SHEET

Section: 7

Page: 8

McComb Downtown Historic District  
Pike County, Mississippi

---

35. (C) 200-214 Main 1904  
**McColgan Hotel**  
Large two-story stucco over brick hotel with basement is located on corner lot, originally wrapping to center of rear block. Ten bays of retail space are located on the first floor of the front (south) façade. Guest rooms and halls are located on the second floor. The roof is flat with a flat parapet. The ten bays have five sections of display windows and recessed entries. A right bay and angled corner bay is the entrance to the former hotel. Second floor windows are aluminum 2/1 DHS in pairs and singles. Terracotta diamonds decorate the parapet. A bracketed cornice has been removed. [PHOTO # 17]
36. (C) 201 Main c. 1905  
Large, one-story, three bay, vinyl siding clad, brick building with partial basement is located on corner lot. The structure has a flat parapet with a corner pier bordered with a stacked brick cornice. The left bay has a corner display window resting on a brick bulkhead. The center bay has a pair of aluminum and glass double swing doors and transom. A canvas-arched canopy extends the full length of the building wrapping around to the east façade. Basement level entry on the southeast corner of the east façade has a flat-cantilevered aluminum canopy and a recessed pair of aluminum and glass double swing doors with sidelights.
37. (C) 205-207 Main c. 1923  
**Former J. A. Beard Drug Store (205)**  
Two story flat roofed building with a straight parapet. The first floor has four bays with a slightly recessed entry to the second floor on the left bay. The right bay has a display window and recessed single door with sidelights and transom. The centered bays are display windows. Second floor windows are evenly spaced over each bay in four pairs of combination six light metal. An arched canopy runs the length of the building above the first floor.
38. (C) 209 Main c. 1900  
Three-story, flat roofed, masonry commercial building with cast stucco applied to the upper two floors. A parapet with three inset panels tops the dentil-trimmed cornice and appears to be cast iron. The first floor has corrugated aluminum or stainless steel applied to the façade. A recessed entry has aluminum double-swing aluminum and glass doors and large plate-glass display windows. Second and third floors each have three fixed glass windows. The scored stucco has a keystone and splayed pediment design above the windows while the third floor has a Greek key design above the windows.
39. (NC) 211 Main c 1920, façade 1999  
Two-story bank building with shed roof sloping to the rear has applied faux stucco to the front façade. The two bay first floor has three blind arches in the left bay with a recessed entry in the right bay. The entry has a pair of double swing single light wood doors just beyond a flat architrave supported by four raised Doric columns. The second floor has six 9/9 DHS windows evenly spaced above the two bays. A stacked cornice rests on small corbels just below the straight parapet crown.
40. (NC) 213 Main c. 1920 altered 1960, 1980  
**Former Wally-Crum Drug Store**  
One-story brick storefront with flat roof and straight parapet has metal coping at cornice level. The perimeter of the façade is brick with wood and window inset. A recessed single entry has a solid wood door with upper lights. A 15 light fixed window in the entry corridor.

**United States Department of the Interior  
National Park Service**

**NATIONAL REGISTER OF HISTORIC PLACES  
CONTINUATION SHEET**

Section: 7

Page: 9

McComb Downtown Historic District  
Pike County, Mississippi

---

41. (NC) 217 Main c. 1920  
One-story brick flat roof commercial storefront with straight parapet recessed between piers that rise from the foundation. The storefront has been altered with tongue and groove wood in the transom area. A pair of double swing aluminum door is in the recessed entry.
42. (NC) 219 Main c. 1920  
One-story masonry and stucco storefront is divided for two businesses with two bays. The structure has a flat roof with a straight parapet and stepped cornice spanning between brick piers. The left bay has a solid wood door and a 48-light, fixed. The right bay has a recessed entry with a pair of double swing aluminum doors with transom and is flanked by display windows resting on wood bulkheads. A metal hip roof canopy is just above the transom level.
43. (NC) 220-222 Main c. 1895  
Two-story commercial, brick building with center triple leaf entry of aluminum and glass double swing door has been painted. The first floor façade has Masonite grooved wood panels with a corrugated metal band at the transom level. The second level has ghost images of seven sealed (bricked) windows.
44. (C) 223-225 Main c. 1920  
Two-story commercial, masonry and stucco building has two bays on the first floor, each with a recessed double leaf entry and plate-glass display windows. The shed roof building has a straight parapet and plain cornice. Doors are double swing aluminum with transoms. A band of glass blocks form a transom above the first floor and define the two lower bays. Art Deco fluting as pilasters rises from the foundation to the cornice with a shorter pair of fluted pilasters rising from the middle second floor windows. Four pairs of metal casement windows with transoms symmetrically places span the second floor of the façade.
45. (C) 224-226 Main 1900  
**Caston-Johnson Building**  
Very ornate brick and terra cotta two-story building with flat roof and tall straight parapet has four bays separated by pilasters rising to the parapet. The first and third bays from the left contain Palladian windows, the second bay has a single round-arched window, and the fourth bay has a pair of narrow round-arched windows. The first floor has a non-historic shopfront with plate glass windows and a recessed entrance. Turquoise panels front the first floor façade. Five pilasters divide the second floor visually with the two of the pilasters resting on acanthus leaf supports. On the second floor, brick columns have acanthus leaf capitols. A Terra cotta sign on the parapet reads, "1900"; the cornice and parapet are cast stone. **[PHOTO #16]**
46. (NC) 227 Main c. 1920  
One-story asymmetrical retail building with a large projecting canopy has a recessed terrazzo tile floored entry with a pair of double swing aluminum doors. The parapet is straight and appears to have stucco board over brick with vertical strips. Metal stanchions support the flat metal canopy.
47. (C) 229 Main c. 1900, façade altered 1938  
**McCrary Building**  
Two-story commercial building on corner lot has a shed roof and straight parapet. The name "McCrary's" is cast into the façade at the parapet level. The first floor has a recessed entry with two pairs of oversize six panel wood doors. The floor is six-inch tile. Marble in pink and green sheet frames entry and lower façade. On the second floor, five fixed glass windows are spaced with fluted pilasters between and at each end. Raised diamond designs are at each corner of the parapet.

**United States Department of the Interior  
National Park Service**

**NATIONAL REGISTER OF HISTORIC PLACES  
CONTINUATION SHEET**

Section: 7

Page: 10

McComb Downtown Historic District  
Pike County, Mississippi

---

48. (C) 228 Main (230) 1898  
**City Drug Store**  
Two-story, ornate, symmetrical, Victorian, stucco commercial building has had the storefront removed and replaced by cast and painted panels, which suggest two pairs of doors with round-arched transoms on the first floor. The second floor has a pair of round-arched windows atop two pairs of three light windows; a large arch tops all with keystone and resting on marbleized Corinthian columns which in turn rest on octagonal pendants. Floriated panels flank the large arch. The cornice is supported by brackets and paired corbels. A triangular pediment centers the parapet wall with cast date and name, "1898, Drug Store." [PHOTO #15]
49. (C) 230 Main 1920  
**Kramer Building**  
Large, four-story red brick commercial building on corner lot has a cast stone stringcourse on both façades atop the first floor. A bracketed cornice is placed at varying levels to read as towers on the parapet. Unusual "T" brackets support the cornice lip. First floor has four bays; the left bay has a sign that reads "State Bank and Trust" in cast stone and plate glass windows on the south and west façades; the remaining bays have two pairs of double swing aluminum doors flanked by glass display windows and a floor of inlaid marble with brass. Second floor windows have been sealed. Third floor windows are 1/1 DHS with 15 light transoms. Fourth floor windows are fixed single light square. A fire escape is on the west façade and a single door at the northwest corner. The structure has applied canvas canopies on the first floor. [PHOTO #13]

**State Street**

50. (C) 219-225 State 1920  
Four bay, two-story brick, commercial brick building with pilasters rising from the foundation to be capped above the straight parapet divide building visually. The left bay has a single leaf entry to the second level. Joining that bay with two others is a recessed area with plate glass display windows and two pairs of double swing aluminum and glass doors with transoms. The right bay has a recessed, double leaf entry flanked by plate glass display windows.

**Third Street**

- 51A. (C) 110 Third Street 1921 (Addition, 1952-1957)  
**J. J. White Memorial Presbyterian Church** Kramer & Lindsley, Architect  
August Wennerlund, Builder  
Large religious building constructed of red brick and stone coping and lintels is located on a corner lot at major intersection. The Gothic Revival structure has irregular massing, cross gables with one story, two story, and three story sections with a four-story bell tower on the east corner of the front façade as the focal point of the intersection of five streets. The structure has stepped buttresses on the east façade, the south façade and the bell tower. The one-story east elevation has crenellation and a ribbon of six stained glass windows in the center with a double leaf recessed entry to the right having an arch stone under flat stone surround notched coping. The square bell tower rises to above a lancet arched double entry with a pair of vertical wood door. Four pairs of lancet arches piece the upper section of the bell tower, which has the symbol of the cross in the design between four ornamented corner pinnacles. Large stained glass windows are on the southeast façade and have extensive detailing and symbolic designs (presently in restoration). The third street basement and second floor entry has an arched stone surround with four woods doors with tracery and square stained glass windows. [PHOTO # 7]

**United States Department of the Interior  
National Park Service**

**NATIONAL REGISTER OF HISTORIC PLACES  
CONTINUATION SHEET**

Section: 7

Page: 11

McComb Downtown Historic District  
Pike County, Mississippi

---

- B. (C) Church Annex 1940 (purchased 1964, renovated 1967)  
Red brick one-story rectangular building housing the church offices, youth fellowship, and gym is located on Third Street to the rear (west) of the main church building. The flat roofed building has brick battlements in the parapet and a projecting brick porch resting on four brick stanchions with a battlement designed parapet. The single entry is a solid wood door with wood surround and one side light is centered between two tripartite fixed glass windows with wood trim and brick sills. Rear entry doors are wood.

- 52A. (C) 115 Third Street 1913  
**City Hall** Xavier A. Kramer, Architect  
Two-story, hip roofed, brick structure with hip dormers on east and west façades has two matching front façades. Recessed mid sections of the north and south façades form hip roof towers on each corner. The buff brick building is rectangular and symmetrical on all sides. Two pairs of Doric columns on brick piers support a projecting partial one-story porch on both façades. The porch has a knee wall balcony for the second floor. The east and west entries have double glass and wood doors with and elliptical fanlight and sidelights. A basket handle arch with keystone in wood is above all elliptical fanlights. Two pairs of windows flank the porches with elliptical fanlights and basket handle arches. Second floor windows are 6/1 DHS wood and crowned splayed lintels and keystones. Decorative urns are at each end of a knee wall, which spans the front façades. [Photos # 8 and # 9]

- B. (C) 115 Third Street 1916  
**Confederate Monument**  
Granite marker dedicated to the Confederate soldiers of Pike County. The United Daughters of the Confederacy Chapter No. 1442 placed the monument at the west entrance to the City Hall. [PHOTO #10]

53. (C) 121 Third Street 1928  
**Fire Station** J. Howard Ryan, Architect  
August Wennerlund, Builder  
The fire station is a two-story Mediterranean Style red brick building with front gabled roof and a three-story hip roof tower with a one-story flat roof wing on the west elevation. A one story wing in on the rear or northeast elevation also. The gable section has a one bay garage door on the first floor and a plaque with dedication. A wrought iron balcony spans the façade above the garage door. Two sets of two pairs of French doors with arched transoms are above the balcony. Scroll-sawn brackets support wide projecting eaves of the gable. The tower has a single leaf entry with limestone quoin surround and a metal cantilevered hood. Two three light fixed glass windows are asymmetrically placed in the center of the tower. Triple blind arches of stucco sit atop cast stone bandings at the cornice level of the hip-roofed tower. [PHOTO #11]

**United States Department of the Interior  
National Park Service**

**NATIONAL REGISTER OF HISTORIC PLACES  
CONTINUATION SHEET**

Section: 8

Page: 12

McComb Downtown Historic District  
Pike County, Mississippi

---

**STATEMENT OF SIGNIFICANCE**

The McComb Downtown Historic District is locally significant in the areas of commerce and architecture (Criteria A and C), because it represents and embodies the commercial growth and prosperity that McComb enjoyed as a railroad town and a commercial center during the late nineteenth and early twentieth centuries, and because it retains a relatively well preserved concentration of commercial and institutional buildings representative of the architectural forms and styles found in commercial centers of Mississippi's towns from the 1890s to the 1950s. The period of significance extends from circa 1890, when the oldest extant buildings were constructed, until 1953, fifty years before this nomination.

**Founding and Early Development**

Located approximately mid-way between New Orleans, Louisiana, and Jackson, Mississippi, McComb (originally called McComb City) was founded in 1872 by railroad magnate Col. H. S. McComb to be the location of the offices, rail yards, and repair facilities of the New Orleans, Jackson, and Great Northern Railroad.

The New Orleans, Jackson and Great Northern Railroad was chartered in 1852 and was completed between New Orleans and Jackson in 1858. The NOJ & GN continued beyond Jackson to Canton, Mississippi, where it connected with the Mississippi Central Railroad, which was completed to Lagrange, Tennessee, in 1860. These two railroads together formed a continuous north-south rail line through Mississippi on the eve of the Civil War.<sup>1</sup>

The railroads of the South were of vital strategic importance during the Civil War, which made their destruction a major objective of the Union armies. Mississippi's railroads suffered tremendous damage. After the war, the Reconstruction period brought new challenges and new opportunities for the railroads. Col. H. S. McComb was one of many northerners who moved south to invest in railroad companies during the Reconstruction years.

Having acquired control of the of the New Orleans, Jackson and Great Northern Railroad by 1871,<sup>2</sup> Col. McComb wanted opportunities for growth of the company that were unavailable in New Orleans, where the primary facilities of the company were then located. He reportedly also had a desire to remove his workers from the "evils of the city." Additionally, yellow fever was a serious concern to railroad personnel and their families, and Col. McComb thought that New Orleans was especially susceptible to the disease. Col. McComb decided to establish a new city on land that he owned a hundred miles north of the New Orleans in Pike County, Mississippi, to be the center of operations for his company. Interestingly, the original McComb city charter stated that no saloons would be licensed to operate in the city.<sup>3</sup>

---

<sup>1</sup> John Hebron Moore, "Railroads of Antebellum Mississippi," *Journal of Mississippi History*, vol. 41, no. 1 (February 1979), pp. 77-80. The history of the NOJ & GN is also addressed in Dunbar Rowland, "Railroads," *Mississippi* (Atlanta: Southern Historical Publ. Assn., 1907), vol. 2, pp. 502-516, especially 504-510.

<sup>2</sup> Rowland, pp 509-510.

<sup>3</sup> Phyllis Thomas, "Birthing of McComb 'Sobering' Event," *McComb Enterprise Journal*, 4 August 1989.



**United States Department of the Interior  
National Park Service**

**NATIONAL REGISTER OF HISTORIC PLACES  
CONTINUATION SHEET**

Section: 8

Page: 13

McComb Downtown Historic District  
Pike County, Mississippi

---

Col. McComb began the process of designing his own town by having the area surveyed and laid out into lots by a man named Billings from Delaware, McComb's home state. The first charter was issued on April 5, 1872, and by 1873 the town had a Mayor (Mr. Mount who worked for the railroad) and Board of Aldermen, a volunteer fire department and a sawmill in addition to support facilities for the railroad.

The town was to have everything that was needed for McComb's men to work and support families. Shops, hotels, restaurants, entertainment venues, and industrial support companies were established. Workers lived in small cottages near the railroad or in the nearby towns of Summit and Magnolia using the rails as transportation to and from work.<sup>4</sup>

Col. McComb spent a great deal of his own money as well as the railroad company's money trying to get the town started while returning the railroad to full operating capacity after the destruction of the war. The effort exceeded his financial resources, and in 1874 he sold controlling interest in the NOJ & GN to the Illinois Central Railroad. Col. McComb died on December 30, 1881.

In 1877 or early 1878, the Illinois Central merged the NOJ & GN and the Mississippi Central Railroad into a new company called the Chicago, St. Louis, and New Orleans Railroad, which was operated as part of the Illinois Central system. This railroad was subsequently consolidated into the Illinois Central in 1882.<sup>5</sup>

One important early industry in McComb City was the J. J. White sawmill and lumber company, which was begun in 1873. J. J. White was born in 1830 and prospered from the approximately 70,000 acres of timberland he owned in the area. With the ability to process and transport his commodity by rail, White built this endeavor into a lucrative business for himself and for the city. Captain White was a veteran of the Civil War and was very active in every facet of the development of McComb from financial intuitions to the development of schools and cotton mills. He died in 1912. The J.J. White Memorial Presbyterian Church at 110 Third Street [Element # 51] was built in his memory in 1921.

The year 1889 saw the beginning of the local newspaper, *The McComb Enterprise*. Begun by R. B. May the newspaper was taken over by his son, R. E. May, at his death in 1908. J.O. Emmerick purchased the paper in 1923 and subsequently built the building at 127-129 North Broadway [Element #13] about 1930. The name was changed to *The McComb Daily Enterprise* with its first edition published on September 2, 1935, and finally to *The McComb Enterprise Journal*. Operation of the newspaper took place in this building until another building was built in 1960's.<sup>6</sup>

Also in the year 1889, brothers William and Hugh McColgan built the McColgan Hotel at 200-214 Main. This building burned along with twenty-one other buildings in downtown McComb on June 22, 1904. The McColgan Hotel was rebuilt soon thereafter [element #35] [Photo #17]. Xavier A. Kramer, local architect, a mechanical and electrical engineer, and mayor from 1929 to 1942, purchased the hotel in 1920. At one time the structure stretched around the corner north on Front Street with shops, parking and other

---

<sup>4</sup> Charles E. Foote, "Historic McComb" (McComb Chamber of Commerce), 1924-25.

<sup>5</sup> Carlton J. Corliss, *Main Line of Mid-America: the Story of the Illinois Central Railroad* (New York: Creative Age Press, 1950).

<sup>6</sup> Delores Feldman, Letter to Letitia Wright, August 2003.

**United States Department of the Interior  
National Park Service**

**NATIONAL REGISTER OF HISTORIC PLACES  
CONTINUATION SHEET**

Section: 8

Page: 14

McComb Downtown Historic District  
Pike County, Mississippi

---

amenities for guests and locals. The rebuilt hotel building originally had a conical turret facing the corner of Main and Front Streets. The First National Bank was founded in 1904 and was housed in this corner of the building. Unfortunately the bracketed cornice and tower were lost when the building was clad in a metal façade cover about 1973. The metal cover has since been removed. The Front Street Restoration Group is currently restoring the building.

The Caston-Johnson building at 224-226 Main Street [Element # 46] was the location of the McComb City Business College, which was begun in 1902.

As for the growth that had taken place in the city from the 1880's, a 1903 edition of *The McComb City Journal*, stated the town had about "1,100 buildings, 100 businesses and about 1000 houses with a population of 7000." The town had fast become one the most prosperous communities on the rail line from Jackson to New Orleans.

**The Railroad Strike of 1911**

Only a few years later the town was to be a focal point in a national crisis. The Great Railroad Strike of 1911 was a critical situation, which set a precedent for political regulation of transportation for the "next twenty years and culminated with the New Deal policies of Franklin Delano Roosevelt."<sup>7</sup> The strike included the Union Pacific Railroad, the Southern Pacific Railroad, and the Western Pacific Railroad. Workers decided to unite and form the American Federation of Labor but railroad companies realized the dangers of the potential power of the labor group and tried to crush the organization.

In McComb, freight and passenger clerks walked out on Monday, September 25, 1911, at 11:30 a. m.; everything dealing with trains came to a halt immediately. Later that day a battle broke out between the locals and the strikers and unofficial reports stated that over 30 were killed and 100 injured. Federal Marshals were sent to McComb to restore order. But public sentiment was not with the strikers and in general the merchants suffered greatly from loss of business from rail system employees during the next two years. The Federal Government finally convinced the railroad companies to recognize the unions and attempt to negotiate the demands of the union. The community weathered the economic setback and bolstered its economy as a center for lumber and agricultural commerce.

**Progress Resumes for McComb**

McComb's City Hall at 115 Third Street [Element # 52A] [Photos #8 and #9] was designed by local architect and one time Mayor, Xavier A. Kramer, who was born in Magnolia on October 19, 1879. Kramer was also chief engineer for the Mississippi Department of Transportation. He followed George H. Wolbrecht as Mayor of McComb. In light of the fact that the first City Hall in the 1870s was a boxcar, the commanding presence of the building that fronts two streets was an admirable addition in 1913. Kramer was also the owner of the McComb Ice Company, the McComb Creamery, the Allen Lumber Company, the McComb Commissary and the McComb Ice Cream Company.

---

<sup>7</sup> Doug Gatlin, "1911, McComb Under Martial Law During Bloody Railroad Strike." University of Southern Mississippi, 1992.

**United States Department of the Interior  
National Park Service**

**NATIONAL REGISTER OF HISTORIC PLACES  
CONTINUATION SHEET**

Section: 8

Page: 15

McComb Downtown Historic District  
Pike County, Mississippi

---

The Harlon Company at 131 North Front [Element # 25] on the corner of North Front Street and State Street was the site of Gulf-McComb Motor Company, which sold Ford and Lincoln automobiles. The Illinois Central Railroad division offices were located on the second floor of the Harlon Building in the 1920's. The Front Street Restoration Group is presently renovating this building.

A Masonic lodge (McComb Lodge No. 382, F&AM) was organized in McComb City in 1875 and chartered in 1876. Meetings were initially held on the second floor of a building on the south side of Main Street. In 1920 the brick building at 102 North Broadway was constructed as the Masonic Temple [Element # 9] [Photo # 3].

The Palace Theatre at 109 Main Street [Element # 32] [Photo #20] was built about 1930 and ceased operation in the 1970s. The building is presently vacant but has been acquired by the McComb Main Street Association, which has plans for its rehabilitation.

The F.W. Woolworth Store opened at 207 Main Street on September 6, 1923. The building was severely damaged by a fire in 1940, which threatened the downtown business area particularly the south side of Main Street.

At the west end of Main Street is the four-story building known as the Kramer Building or originally "Jacob's Theatre" at 230 Main [Element #49] [Photo #13]. The Ludwig-McComb Theatre opened October 6, 1928 with a reported 2000 people attending the event. The building later attracted the first of the chain department stores to Main Street with J. C. Penney locating on March 11, 1937, in the east side and using two of the upper floors. Eventually, the City Drug Store building just to the east was taken in as auxiliary space. The first floor front entry of the adjoining building was closed and access was opened from the inside east wall of the Kramer Building.

Fourteen of the buildings in the district were constructed in the 1920s. Seven of those located in the 200 block of Main Street replaced wooden buildings from the 1890s:

Five buildings in the proposed district are attributed to the 1940s. Among these are the buildings at 101 North Broadway [Element # 1] and 124 North Broadway [Element # 11] [Photo #2].

Metal façade covers were placed on many of the Main Street and Downtown businesses in the 1960's and were removed in 2001 and 2002. Private citizens began investing the time and money in order to breathe new economic life into the area.<sup>8</sup>

---

<sup>8</sup> Matt Williamson, "Metal Slip Covers Come Down off Downtown Buildings," *Southwest Sun*, McComb Mississippi, 24 April 2002.

**United States Department of the Interior  
National Park Service**

**NATIONAL REGISTER OF HISTORIC PLACES  
CONTINUATION SHEET**

Section: 9

Page: 16

McComb Downtown Historic District  
Pike County, Mississippi

---

**BIBLIOGRAPHY**

Corliss, Carlton J. *Main Line of Mid-America: the Story of the Illinois Central Railroad*. New York: Creative Age Press, 1950.

Cramer, Adele. "Kramertown-Railroad Historic District," National Register Nomination, Mississippi Department of Archives and History, November 1978.

Federal Writer's Program. *Mississippi: A Guide to the Magnolia State*. New York: The Viking Press, 1938.

Feldman, Delores, Letter to Letitia Wright, August 2003.

Foote, Charles E. "Historic McComb." McComb Chamber of Commerce, 1924-25.

Gatlin, Doug. "1911, McComb Under Martial Law During Bloody Railroad Strike." University of Southern Mississippi, 1992.

Hancock, Jack. "Now Largest City Between Jackson and New Orleans, McComb Blueprints Future," *Jackson Daily News*, 31 July 1949.

McLemore, Richard Aubrey, editor. *A History of Mississippi*. Jackson, Miss.: University & College Press of Mississippi, 1973.

Moore, John Hebron. "Railroads of Antebellum Mississippi." *Journal of Mississippi History*, vol. 41, no. 1, February 1979.

Rowland, Dunbar. "Railroads," *Mississippi*, vol. 2. Atlanta: Southern Historical Publ. Assn., 1907.

Ryan, Jack. "Downtown's Future." *McComb Enterprise Journal*. 31 March 1988.

Sanborn Map Company. Maps of McComb, Mississippi. 1893, 1898, 1904, 1907, 1913, 1918, 1925.

Thomas, Phyllis. "Birthing of McComb 'Sobering' Event." *McComb Enterprise Journal*, 4 August 1989.

Williamson, Matt. "Metal Slip Covers Come Down off Downtown Buildings." *Southwest Sun*, McComb Mississippi. 24 April 2002.

Works Progress Administration. Pike County, Mississippi Industry. Source Material for Mississippi History. Statewide Historical Research Project. Mississippi Department of Archives and History.

**United States Department of the Interior  
National Park Service**

**NATIONAL REGISTER OF HISTORIC PLACES  
CONTINUATION SHEET**

Section: 10 & Photographs

Page: 17

McComb Downtown Historic District  
Pike County, Mississippi

---

**GEOGRAPHICAL DATA**

Verbal Boundary Description: The district boundaries are delineated on the accompanying map, based on the 1949 update of the 1925 Sanborn map.

Boundary Justification: The district includes a group of contiguous commercial, religious, and governmental buildings that represent the historic and architectural development of McComb during the period of significance.

**PHOTOGRAPHS**

The following information is the same for all photographs:

- 1.) McComb Downtown Historic District
- 2.) Pike County, Mississippi
- 3.) Letitia Parham Wright, Consultant
- 4.) November 14, 2003
- 5.) Mississippi Department of Archives and History

- |                |  |
|----------------|--|
| Photo 1 of 21: | 1.) North Broadway to South Broadway<br>6.) view to south                                  |
| Photo 2 of 21: | 1.) 124 North Broadway (element #11), west façade<br>6.) view to east                      |
| Photo 3 of 21: | 1.) 120 North Broadway (element #9), west façade<br>6.) view to east                       |
| Photo 4 of 21: | 1.) 116 North Broadway (element #6), west façade<br>6.) view to east                       |
| Photo 5 of 21: | 1.) 111 North Broadway (element #4), east façade<br>6.) view to west                       |
| Photo 6 of 21: | 1.) 110-112 North Broadway (element #3), West façade<br>6.) view to east                   |
| Photo 7 of 21: | 1.) 110 Third Street (element #51A), NE façade and South façade<br>6.) view to NW          |
| Photo 8 of 21: | 1.) City Hall, 115 Third Street (element #52A), East (Broadway) façade<br>6.) view to West |

**United States Department of the Interior  
National Park Service**

**NATIONAL REGISTER OF HISTORIC PLACES  
CONTINUATION SHEET**

Section: 10 & Photos

Page: 18

McComb Downtown Historic District  
Pike County, Mississippi

---

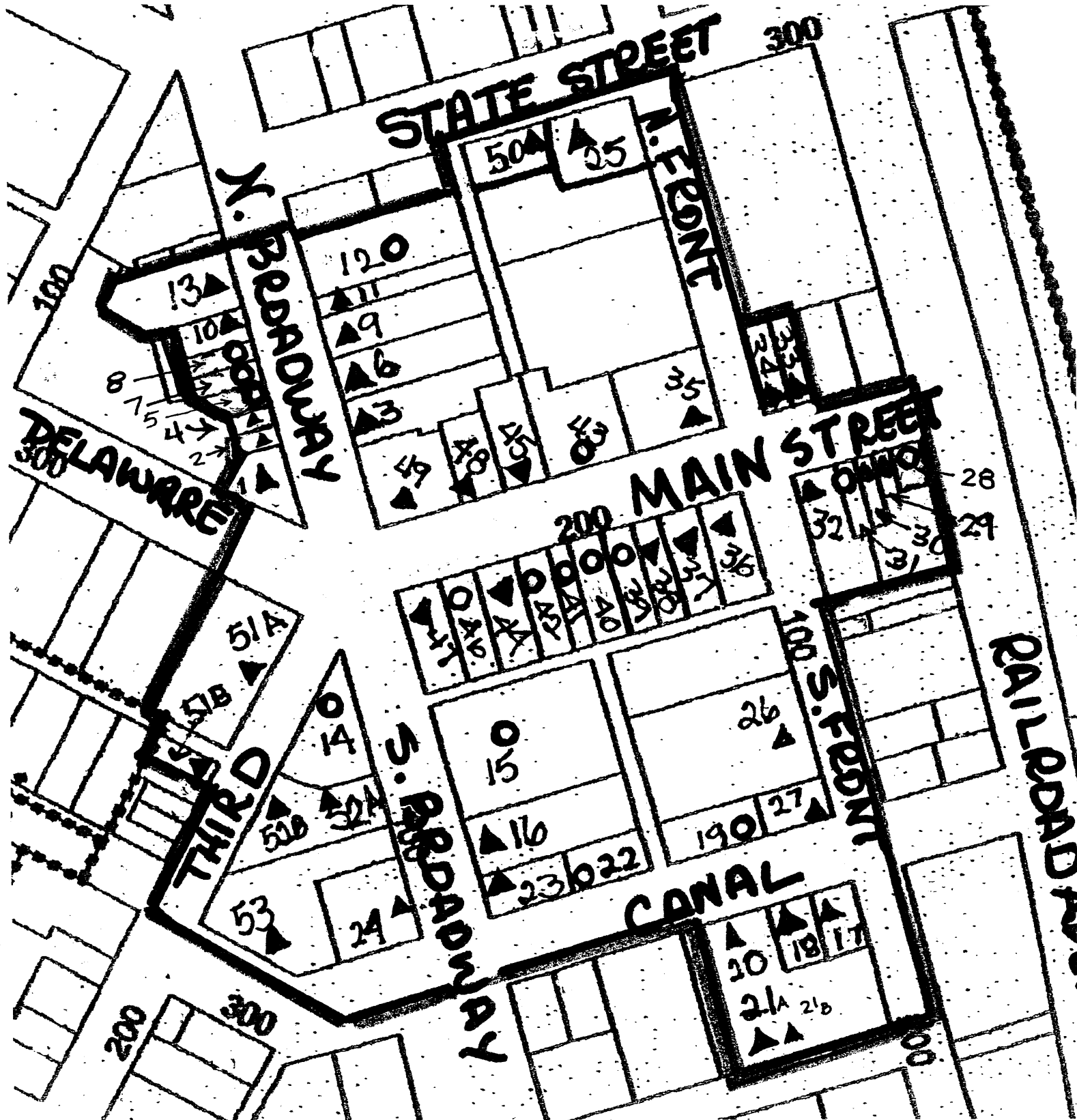
Photo 9 of 21:	1.)	City Hall, 115 Third Street (element #52A), west façade
	6.)	view to east
Photo 10 of 21:	1.)	Confederate Monument (element #52B), north face
	6.)	view to south
Photo 11 of 21:	1.)	Fire Station, 121 Third Street (element #53), North façade
	6.)	view to south
Photo 12 of 21:	1.)	Main Street
	6.)	view to east
Photo 13 of 21:	1.)	Kramer Building, 230 Main (element #49), west and south façades
	6.)	view to NE
Photo 14 of 21:	1.)	south side of Main Street
	6.)	view to SE
Photo 15 of 21:	1.)	228 Main Street (element #48), south façade
	6.)	view to north
Photo 16 of 21:	1.)	224-226 Main Street (element #45), south façade
	6.)	view to north
Photo 17 of 21:	1.)	200 Main, McColgan Hotel (element #35), East and South façades
	6.)	view to NW
Photo 18 of 21	1.)	114 Main Street (element #34), south façade
	6.)	view to north
Photo 19 of 21:	1.)	110-112 Main Street (element #33), south façade
	6.)	view to north
Photo 20 of 21:	1.)	109 Main Street (element #32), Palace Theatre, north façade
	6.)	view to south
Photo 21 of 21:	1.)	132 South Front Street (element #27), East and South façades
	6.)	view to NW

McComb Downtown Historic District  
McComb, Pike County, Mississippi

Locations and status of buildings in the district  
Keyed to inventory sequence number

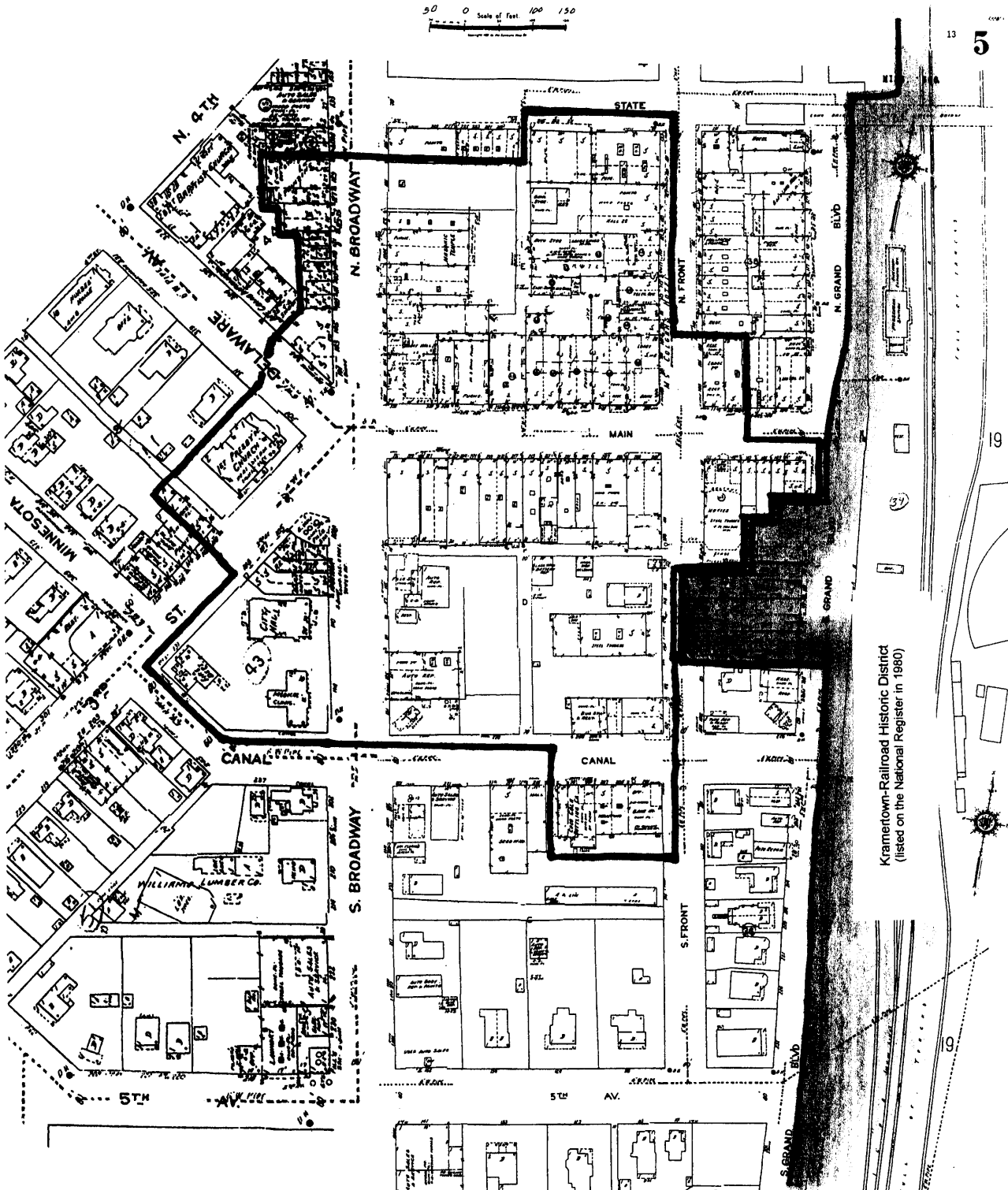
Status within the district:

- ▲ = Contributing
- = Non-contributing



McComb Downtown Historic District  
McComb, Pike County, Mississippi

Compiled from 1949 update to 1925 Sanborn Map, pages 5, 6, and 13

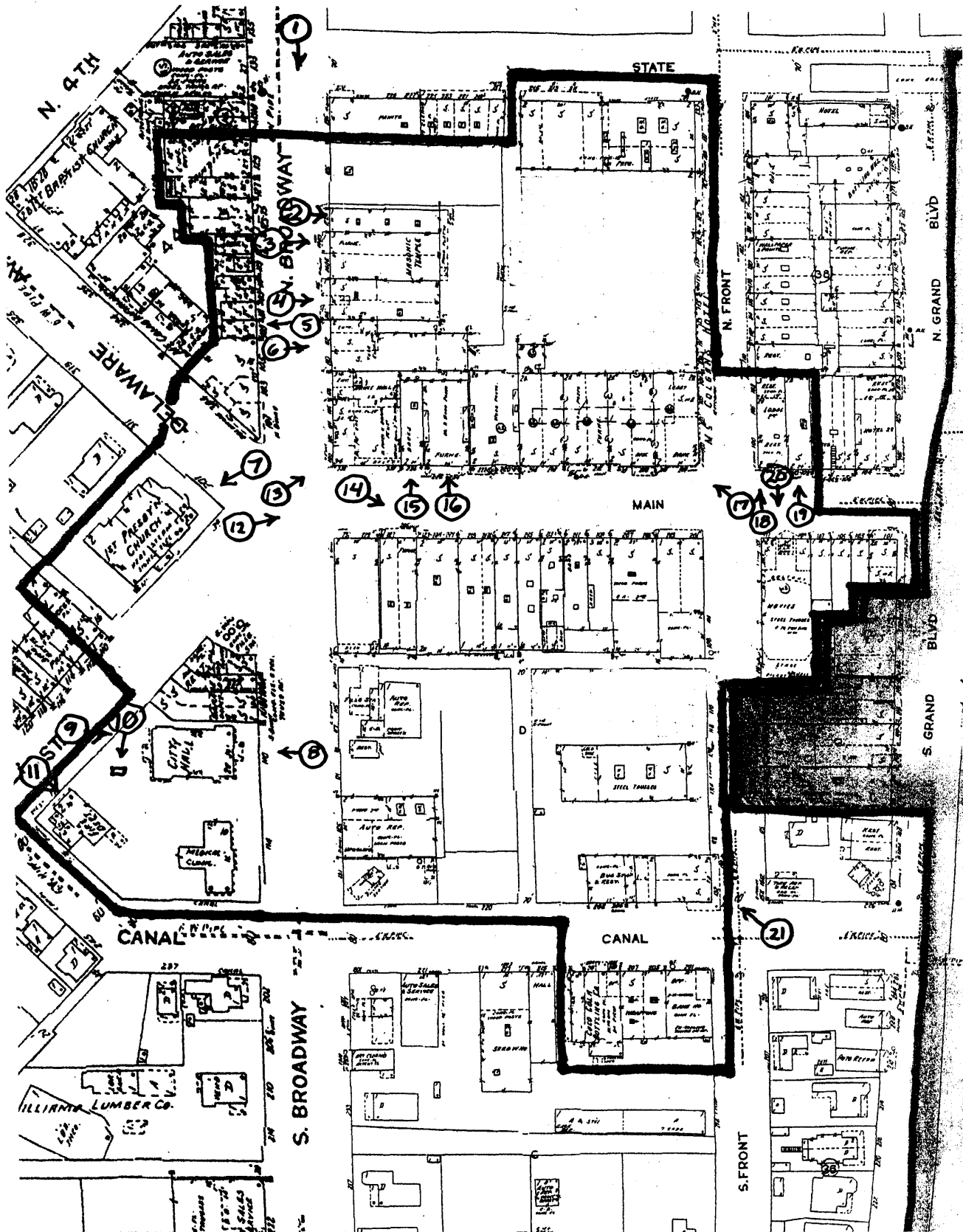
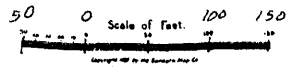




Photograph Locations

McComb Downtown Historic District  
McComb, Pike County, Mississippi

Compiled from 1949 update to 1925 Sanborn Map, pages 5, 6, and 13





McComb Downtown Historic District  
PIKE County, MS  
BROADWAY

# 1 of 21

South



REPUBLIC FINANCE, Inc.

REPUBLIC FINANCE, Inc.

03 11 14

McComb Downtown Historic Dist  
Pike Co, Ms

Element # 11 - 124 N. Broadway

# 2 of 21

E



McCombs Downtown Historic Dist  
Pike Co, MS

Element # 9 Masonic Temple, 120  
N. Broadway

# 3 of 21

E



03 11 14



McComb Downtown Historic Dist  
Pike Co, MS

Element # 6      116 N. Broadway

# 4 of 21

E



McComb Downtown Historic Dist  
Pike Co, MS

Element #4 - 111 N. Broadway

#5 of 21

W



03 11 13

McComb Downtown Historic District  
PIKE County, MS  
Element # 3 - 110-112 N. Broadway

# 6 of 21

EAST



'03

McComb Downtown Historic  
Dist

Pike Co, Ms

Element # 51 A

J. J. White Mem'l  
Presby. Church

# 7 of 21





McComb Downtown Historic Dist  
Pike Co, Ms

Element # 52A City Hall

# 8 of 21

W



McComb Downtown Historic Dist

Pike Co, MS

Element # 52A City Hall

# 9 of 21

7E



03 11 13

McComb Downtown Historic  
Dist

Pike Co, Ms

Element # 52 B

Confederate monument

# 10 of 21



McComb Downtown Historic Dist  
Pike Co, Ms

Element # 53      Fire station

# 11 of 21



'03 11 14



McComb Downtown Historic Dist  
Pike Co., Ms

Main Street

# 12 of 21



'03 11 14

McComb Downtown Historic Dist  
Pike Co, Ms

Element # 49 Kramer Bldg.

# 13 of 21



'03 11 14

McComb Downtown Historic Dist

PIKE Co., MS

Main Street

# 14 of 21

1898  
DRUG STORE



McComb Downtown Historic Dist  
Pike Co, Ms

Element # 48

City Drug Store 228 Main St.

# 15 of 21



Stewart Smith Schools  
MAIN OFFICES

03 11 14



McComb Downtown Historic Dist  
Pike Co, Ms

Element # 45

224-226 Main St.

# 16 of 21



'03 11 14

McComb Downtown Historic District  
PIKE County, Ms

Element #35. - McColgan Hotel  
200-214 Main St.

#17 of 21



03 11 14

McComb Downtown Historic Dist  
Pike Co, Ms

Klement #34 114 Main St.

# 18 of 21



031114

McComb Downtown Historic Dist  
Pike Co, MS

Element # 33

110-112 Main St.

# 19 of 21

N



'03 11/14



McComb Downtown Historic Dist  
Pike Co, MS

Element #32 - Palace Thtr., 109 Main St.

# 20 of 21

5



McComb Downtown Historic Dist  
PIKE Co., MS

Element # 27 - 132 S. Front Street

# 21 of 21

NW