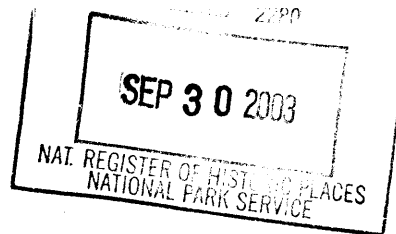


United States Department of the Interior
National Park Service



**NATIONAL REGISTER OF HISTORIC PLACES
REGISTRATION FORM**

1. Name of Property

historic name:

other names/site number: South Cherry Street Historic District

2. Location

street & number: along Cherry and Drummond Streets from Harrison Street to Bowmar Street and including Chambers and Baum Streets

city or town: Vicksburg

state: Mississippi code: MS county: Warren code: 149 zip code: 39180

3. State/Federal Agency Certification

As the designated authority under the National Historic Preservation Act of 1966, as amended, I hereby certify that this X nomination request for determination of eligibility meets the documentation standards for registering properties in the National Register of Historic Places and meets the procedural and professional requirements set forth in 36 CFR Part 60. In my opinion, the property X meets does not meet the National Register Criteria. I recommend that this property be considered significant nationally statewide X locally. (See continuation sheet for additional comments.)

Kenneth H. P. Paul
Signature of certifying official

SEPTEMBER 29, 2003
Date

Deputy State Historic Preservation Officer
State or Federal agency and bureau

In my opinion, the property meets does not meet the National Register criteria. (See continuation sheet for additional comments.)

Signature of commenting or other official

Date

State or Federal agency and bureau

4. National Park Service Certification

I, hereby certify that this property is:
✓ entered in the National Register,
 See continuation sheet.

 determined eligible for the
National Register

 See continuation sheet.

 determined not eligible for the
National Register

 removed from the National Register

 other (explain):

Edson H. Beall
Signature of the Keeper

11.14.03
Date of Action

5. Classification**Ownership of Property:**

Private

Number of Resources within Property:**Category of Property:**

District

Contributing

184

Noncontributing

32

2

186

32

buildings
sites
structures
objects
Total**Name of related multiple property listing**

(Enter "N/A" if property is not part of a multiple property listing.)

Number of contributing resources previously listed in the National Register

Historic Resources of Vicksburg, MS

14

6. Function or Use**Historic Functions:**

DOMESTIC: single dwelling

DOMESTIC: multiple dwelling

DOMESTIC: secondary structure

COMMERCE/TRADE: business

COMMERCE/TRADE: financial institution

EDUCATION: school

RELIGION: religious facility

TRANSPORTATION: road-related (vehicular)

TRANSPORTATION: bridge

Current Functions:

DOMESTIC: single dwelling

DOMESTIC: multiple dwelling

DOMESTIC: secondary structure

COMMERCE/TRADE: business

COMMERCE/TRADE: financial institution

FUNERARY: mortuary

HEALTH CARE: sanitarium

RELIGION: religious facility

TRANSPORTATION: road-related (vehicular)

TRANSPORTATION: bridge

VACANT

7. Description**Architectural Classification(s):**

Greek Revival

Mission

Italianate

Spanish Colonial Revival

Queen Anne

Italian Renaissance

Shingle

Prairie

Romanesque

Bungalow - Craftsman

Colonial Revival

Tudor Revival

Neoclassical

Materials:

foundation: brick, stucco, concrete

roof: tin, asphalt, asbestos, ceramic tile

walls: weatherboard, brick, stucco, concrete, asbestos, vinyl

other

Narrative Description:

See Continuation Sheets

8. Statement of Significance**Applicable National Register Criteria**

- A** Property is associated with events that have made a significant contribution to the broad patterns of our history.
- B** Property is associated with the lives of persons significant in our past.
- X **C** Property embodies the distinctive characteristics of a type, period, or method of construction or represents the work of a master, or possesses high artistic values, or represents a significant and distinguishable entity whose components lack individual distinction.
- D** Property has yielded, or is likely to yield information important in prehistory or history.

Areas of Significance

Architecture
Community Planning
and Development

Period of Significance

1848 - 1953

Significant Dates

N/A

Criteria Considerations:

Property is:

- ☐ **A** owned by a religious institution or used for religious purposes.
- ☐ **B** removed from its original location.
- ☐ **C** a birthplace or a grave.
- ☐ **D** a cemetery.
- ☐ **E** a reconstructed building, object, or structure.
- ☐ **F** a commemorative property.
- ☐ **G** less than 50 years of age or achieved significance within the past 50 years.

Significant Person(s)**Cultural Affiliation(s)****Architect/Builder**

various/unknown

Narrative Statement of Significance:

See continuation sheets.

9. Major Bibliographical References

Bibliography See continuation sheet.

Previous documentation on file (NPS)

- ☐ preliminary determination of individual listing (36 CFR 67) has been requested.
- ☐ previously listed in the National Register
- ☐ previously determined eligible by the National Register
- ☐ designated a National Historic Landmark
- ☐ recorded by Historic American Buildings Survey

- ☐ recorded by Historic American Engineering Record

Primary Location of Additional Data

- ☐ State Historic Preservation Office
- ☐ Other State agency
- ☐ Federal agency
- ☐ Local government
- ☐ University
- ☐ Other

Name of repository:

Vicksburg Foundation for Historic
Preservation

10. Geographical Data

Acreage of Property: approximately 125 acres

UTM References:	Zone	Easting	Northing	Zone	Easting	Northing	
A	15	699450	3580720	C	15	699990	3579300
B	15	699960	3580660	D	15	699360	3579180

Verbal Boundary Description See continuation sheet.

Boundary Justification: See continuation sheet.

11. Form Prepared By

name/title:	Nancy H. Bell, Executive Director	date:	June 2003
organization:	Vicksburg Foundation for Historic preservation	telephone:	601-636-5010
street & number:	P. O. Box 254	zip code:	39181
city or town:	Vicksburg	state:	MS

Additional Documentation

Submit the following items with the completed form:

Continuation Sheets

Maps

A USGS map (7.5 or 15 minute series) indicating the property's location.

A sketch map for historic districts and properties having large acreage or numerous resources.

Photographs

Representative black and white photographs of the property.

Additional items (Check with the SHPO or FPO for any additional items)

Property Owner(s)

name:	multiple (more than fifty)	telephone:	
street & number:		zip code:	
city or town:		state:	

Paperwork Reduction Act Statement: This information is being collected for applications to the National Register of Historic Places to nominate properties for listing or determine eligibility for listing, to list properties, and to amend existing listings. Response to this request is required to obtain a benefit in accordance with the National Historic Preservation Act, as amended (16 U.S.C. 470 et seq.).

Estimated Burden Statement: Public reporting burden for this form is estimated to average 18.1 hours per response including the time for reviewing instructions, gathering and maintaining data, and completing and reviewing the form. Direct comments regarding this burden estimate or any aspect of this form to the Chief, Administrative Services Division, National Park Service, P.O. Box 37127, Washington, DC 20013-7127; and the Office of Management and Budget, Paperwork Reduction Projects (1024-0018), Washington, DC 20503.

**United States Department of the Interior
National Park Service**

**NATIONAL REGISTER OF HISTORIC PLACES
CONTINUATION SHEET**

Section: 7

Page: 1

South Cherry Street Historic District
Vicksburg, Warren County, Mississippi

Narrative Description

The South Cherry Street Historic District includes 234 buildings and two structures in the South Cherry Street neighborhood near downtown Vicksburg, Mississippi. The district includes Cherry Street and Monroe and Drummond Streets from just south of South Street (actually the south boundary of the Uptown Vicksburg Historic District) to Bowmar Street on the south and includes Baum and Chambers streets to Stout's Bayou. The district is roughly rectangular and its terrain is generally flat with a few rises. Many of the properties within this area are informally landscaped and most have been rehabilitated during the past fifteen years. Concrete sidewalks line all the streets in the district and oak trees were planted on the right-of-way in the early 1900s, many survive today. The district is composed almost entirely of residential buildings with commercial buildings accounting for only five percent (13 buildings).

The two structures included in the district are the Cherry Street bridge and the brick paving of Baum Street. The Cherry Street bridge was constructed of concrete in 1911 in order to provide vehicular and pedestrian access over the railroad tracks. Streets in the entire district were paved in brick beginning about 1910. Baum Street is the only street that has not been covered with asphalt.

The majority of the buildings in the district were constructed during Vicksburg's boom period – 1880 to 1910 – and total 137. There are fifteen (15) buildings in the district built before 1880 and forty-six (49) built in the twenty years - 1910 to 1930- following the boom period. Only five (5) buildings were constructed between 1931 and 1953, and twenty-eight (28) (including eight (8) garages and a drive-through bank structure) were built after the period of significance.

Represented in the district are intact examples of nearly every architectural style found in Vicksburg. These include: Greek Revival, Italianate, Queen Anne, Shingle, Romanesque Revival, Colonial Revival, Neoclassical, Tudor Gothic, Tudor Revival, Mission Revival Spanish Revival, Italian Renaissance, Mediterranean, Prairie, American Foursquare, Craftsman Bungalow, Traditional Commercial, and Ranch. Also represented in the district are classic Vicksburg architectural types including the two-bay shotgun, the three, four and five-bay galleried cottages and the three-bay galleried townhouse.

Included in the district's resources are 181 residential buildings, thirteen (13) commercial buildings, thirty-eight (38) outbuildings, a bridge (# 61) and a street paved in brick (# 23). Of the 234 resources in the district, fourteen are already listed in the National Register of Historic Places. These are: Carr Junior High School (#54), the Craig Flowers House (#68) (three buildings), the Feld Home (#76) (two buildings), Fannie-Willis Johnson Home (#156) (two buildings), the Fitz-Hugh House (#30) (two buildings), the Harding-Johnston House (#37), the Magnolias (#183), and the Shlenker House (#92) (two buildings). In addition to the previously listed buildings, 187 resources contribute to the district and only 33 (14 percent) are non-contributing. Of the non-contributing buildings, eight are non-historic outbuildings, eighteen are non-historic buildings and only seven (six residential and one commercial) are historic buildings that have been so drastically remodeled that they no longer contribute to the historic character of the district. Two of the district's resources have been moved. The house at 2521 Drummond Street (#166A) was originally constructed across the street.

**United States Department of the Interior
National Park Service**

**NATIONAL REGISTER OF HISTORIC PLACES
CONTINUATION SHEET**

Section: 7

Page: 2

South Cherry Street Historic District
Vicksburg, Warren County, Mississippi

could be built. Some time between 1913 and 1925, the house at 1203 Harris Street (#176) was moved from the lot just to the east of the current location, where the house faced Cherry Street. An apartment building (#96) was then constructed on the Cherry Street lot.

Inventory of Resources

C = Contributing resource

NC = Non-contributing resource

PL = Previously listed in the National Register

The inventory is arranged alphabetically by street name in ascending numerical order. Buildings are classified as contributing (C) or non-contributing (NC) to the historic character of the district. Properties that have already been listed in the National Register are designated as previously listed (PL).

ARTHUR STREET

1. C 1198 Arthur Street c. 1930
A one-story, clapboard three-bay cottage, facing north, with an asphalt-covered gable roof pierced by two projecting triangular vents and a brick end chimney. The central gabled stoop is supported with two Doric columns and enclosed by a simple balustrade. There are three bays: a glazed, single-leaf door flanked by paired, three-over-one, double-hung wood windows.
2. C 1200 Arthur Street c. 1900
A one-story, clapboard four-bay cottage, facing north, with an asphalt-covered hip roof with exposed rafter ends. The full-width front gallery is recessed under the main roof and is supported by four turned posts ornamented with delicate jigsaw brackets and enclosed by a turned balustrade. There are four bays: two single-leaf French doors and two one-over-one, double-hung wood sash flanked by shutters.
3. C 1201 Arthur Street c. 1930
A one-story, clapboard five-bay cottage, facing south, with an asphalt-covered gable roof pierced by two projecting triangular vents and an end chimney. The central gabled stoop is supported by two Doric columns. There are five bays: a single three-over-three double-hung wood window, a single-leaf paneled wood door flanked by paired, three-over-one, double-hung windows and a metal garage door.

**United States Department of the Interior
National Park Service**

**NATIONAL REGISTER OF HISTORIC PLACES
CONTINUATION SHEET**

Section: 7 Page: 3

South Cherry Street Historic District
Vicksburg, Warren County, Mississippi

-
4. C 1202 Arthur Street c. 1900
A one-story, clapboard four-bay cottage, facing north, with an asphalt-covered hip roof with exposed rafter ends and a cross gable over a projecting bay. There are two offset stuccoed chimneys. The porch, to the left of the bay, is covered by a metal-covered flat roof which is supported by turned posts and enclosed by a simple balustrade. There are four bays: two, one-over-one, double-hung wood sash; a glazed single-leaf wood door with a single-light transom and flanked by pilasters; and a three part window with one-over-one double-hung sash. There is an arched one-over-one double-hung wood window in the gable end.

BAUM STREET

- 5A. C 1315 Baum Street c. 1900 Colonial Revival
A two-story, clapboard Colonial Revival residence, facing south, with an asphalt-covered hip roof with two offset corbelled brick chimneys. The L-shaped porch is covered by a flat roof which is supported by Doric columns on stuccoed bases. A denticulated frieze and low stuccoed wall complete the porch which has been enclosed with windows on the left side. There are two bays on the first floor: a glazed, single-leaf door with a transom and denticulated entablature and a three-part window with leaded-over-one double-hung sash.
- 5B. C Garage. c. 1900
A one-story cast-concrete block garage with a flat roof.
6. C 1316 Baum Street c. 1920 Craftsman bungalow
A one-story, stuccoed Bungalow, facing north, with an asbestos-covered gable roof with exposed rafters and pierced by a center gabled dormer and a cross gable over a porch on the right. The gable end of the cross gable has a four-light window and exposed rafter ends in its widely overhanging eaves. This porch is supported by rectangular stuccoed piers. There are three bays: a pair of eight-over-one, double-hung wood sash; a glazed single-leaf wood door; and a three-part window with three, eight-over-one, double-hung wood sash.
7. C 1317 Baum Street c. 1900, alteration c. 1925 Victorian vernacular
A two-story, clapboard Victorian vernacular residence, facing south, with an asphalt-covered gable roof with a cross gable over a projecting bay which has imbricated shingles, an arched vent, and brackets in the gable end. There is a two-tiered L-shaped porch supported by Doric columns. A jigsawn balustrade completes the second tier. Originally the porch was two story at the entrance with a small one-story just to the left. The porch was enlarged after 1925. There are four bays: a single-leaf glazed door with transom, pilasters and entablature and three one-over-one, double-hung wood sash.

**United States Department of the Interior
National Park Service**

**NATIONAL REGISTER OF HISTORIC PLACES
CONTINUATION SHEET**

Section: 7

Page: 4

South Cherry Street Historic District
Vicksburg, Warren County, Mississippi

-
8. C 1318 Baum Street c. 1910
A two-story, vinyl over clapboard American Foursquare residence, facing north, with an asphalt-covered hip roof with a cross gable to the side with boxed returns. There is a corbelled brick offset chimney. The one-story full-width front porch has a hip roof supported by wooden Doric columns. There are three bays: a pair of single-leaf glazed doors with a leaded glass transom, fluted pilasters and a plain entablature; and two one-over-one double-hung sash.
9. C 1319 Baum Street c. 1900 Queen Anne
A two-story, asbestos-covered Queen Anne residence, facing south, with a slate-covered gable roof with a cross gable facing to the front with imbricated shingles and a one-over-one double-hung window in the gable end. A square, offset, tower has a slate hip roof with a finial, brackets at the cornice and paired one-over-one double-hung sash below the frieze. A porch has been added to the base of the tower. The one-story L-shaped front gallery is covered by a hip roof supported by turned posts and enhanced by pierced brackets and a balustrade. The left side of the porch has been enclosed with a series of one-over-one double-hung wooden sash. There are two bays on the first floor: double-leaf glazed doors with an entablature and pilasters and a one-light transom panel and a multi-light single-leaf door with a decorative entablature.
- 10A. C 1320 Baum Street c. 1905, alterations c. 1913-1925 Colonial Revival
A two-story, stucco-over-clapboard Colonial Revival residence, facing north, with an asphalt-covered hip roof with plain, widely overhanging eaves and a stuccoed offset chimney. A one-story wrap-around porch is covered by a hip roof with plain, overhanging eaves and supported by stuccoed columns with wooden capitals. A low stuccoed wall completes the porch. Originally the porch was two stories at the entrance and there was not a room on the left over the porch. These changes were made between 1913 and 1925. There is a porte-cochere to the right side at the rear supported by square stuccoed columns with wooden capitals. There are five bays: a glazed, single-leaf door with transom; a three-sided bay with three-over-one double-hung wood sash, and a glazed single-leaf wood door with sidelights and transom and a denticulated entablature.
- 10B. C Garage/Apartment. c. 1905
A two-story two-car clapboard garage with an asphalt hip roof. There are two pair of three-over-one double-hung wood sash on the second floor.
- 11A. NC 1321 Baum Street c. 1900 Victorian vernacular
A two-story, board and batten over clapboard vernacular Victorian residence, facing south, with an asphalt-covered hip roof with a cross gable featuring cornice returns, fishscale shingles, and a decorative vent in the gable end. The gable end is the only original feature of the house that remains. The building has been re-sided and new windows and doors have been installed, and the porch has been removed.
- 11B. NC Garage c. 1970
A one-story two-car board and batten garage with a metal gable roof.

**United States Department of the Interior
National Park Service**

**NATIONAL REGISTER OF HISTORIC PLACES
CONTINUATION SHEET**

Section: 7 Page: 5

South Cherry Street Historic District
Vicksburg, Warren County, Mississippi

-
12. C 1329 Baum Street c. 1900 Victorian vernacular
A two-story, asbestos-covered Victorian vernacular residence, facing south, with an asphalt-covered hip roof, and a cross gable with imbricated shingles and a pointed arch vent. The one-story porch has been changed through the addition of wrought iron posts on brick piers and the enclosure of part of the porch. There are four bays: a new sash in the enclosed porch; a single-leaf glazed door; a set of three two-over-two double-hung wood windows; and a single two-over-two double-hung wood window.
13. C 1330 Baum Street c. 1920 American Foursquare
A two-story, brick American Foursquare, facing north, with an asbestos-covered hip roof with plain overhanging eaves and a flush brick chimney. The full-width, one-story porch is covered by a flat roof supported by two square brick piers with plain concrete caps and two square wood columns resting on brick piers. There are four bays: three one-over-one, double-hung wood sash and a glazed single-leaf wood door with a single light transom. A heavy balustrade tops the porch.
- 14A. NC 1334 Baum Street c. 1900 Queen Anne
A one-story, three-bay, Queen Anne cottage, facing north, that has been re-sided with brick and board and batten (in the gable end). The hip roof is asbestos and the porch posts and piers are non-historic. There are three bays which are all non-historic.
- 14B. NC Garage. c. 1970
A one-story board and batten-covered garage with a gable roof.
15. C 1335 Baum Street c. 1897 Colonial Revival
A two-story, clapboard-covered Colonial Revival residence, facing south, with a slate-covered gable roof and two corbelled brick end chimneys. There are two gabled dormers with cornice returns and two-light sash. The one-story full-width front porch is topped with a flat roof supported by round wood Corinthian columns. There are three bays: a single-leaf, glazed wood door flanked by fluted pilasters and leaded sidelights, and a leaded transom; and two six-over-one double-hung wood sash.
- 15B. NC Carport. c. 1970
A modern wood carport at the rear of the property.
- 16A. C 1338 Baum Street c. 1897 Queen Anne
A one-story, clapboard Queen Anne residence, facing north, with an asbestos-covered hip roof with a cross gable over a three-sided bay. The porch, to the left of the bay, has a flat roof supported by square Doric wood columns on brick bases. There is simple balustrade. The gable end has fishscale shingles and jigsawed brackets. There are two corbelled brick central chimneys. There is one bay: a three-part bay with a fixed four-light window flanked by two-over-two double-hung sash.

United States Department of the Interior
National Park Service

NATIONAL REGISTER OF HISTORIC PLACES
CONTINUATION SHEET

Section: 7

Page: 6

South Cherry Street Historic District
Vicksburg, Warren County, Mississippi

-
- 16B. NC Garage. c. 1970
A one-story one-car board and batten garage with an asphalt gable roof.
17. C 1339 Baum Street c. 1897 Queen Anne
A two-story, clapboard Queen Anne cottage, facing south, with an asphalt-covered hip roof and a cross gable over a projecting bay. A one-story corner porch is covered by a hip roof supported by turned posts. A stoop extends from the front and is covered by a gable roof with cornice returns and is supported by turned posts. A simple balustrade completes the porch. There are three bays: a pair of one-over-one, double-hung sash; a single-leaf glazed wood door with fluted pilasters, entablature and transom; and a three-part bay window with one-over-one, double-hung wood sash.
18. C 1400 Baum Street c. 1910 American Foursquare
A two-story, brick American Foursquare, facing north, with a slate-covered hip roof. There is a hipped dormer with a three-part vent. The full-width porch is covered by a hip roof supported by square brick columns. A low brick wall completes the porch. There are two bays: a three part window of one-over-one sash; and a single-leaf glazed door with sidelights and a transom.
19. NC 1401 Baum Street c. 1970 Ranch
A one-story brick ranch-style residence.
20. C 1406 Baum Street c. 1910 American Foursquare
A two-story, brick house, facing north, with a slate-covered hip roof with widely overhanging eaves. A hipped dormer has widely over-hanging eaves as well. The one-story, full-width stuccoed porch has a flat roof supported by square stuccoed columns. The porch has been sensitively enclosed on the left side with multi-light fixed sash. There is a glazed, single-leaf door with sidelights and multi-light transom.
21. C 1414 Baum Street c. 1900 Colonial Revival
A one-story, clapboard Colonial Revival residence, facing north, with an asphalt-covered gable with a cross gable. There are three corbelled brick offset chimneys. The L-shaped porch is supported by turned posts and is topped by an eight-sided tower with two-over-two windows and topped with a widow's walk. The porch is screened on the left side. There is a porte-cochere on the right supported by brick columns and topped with a balustrade. There are four bays: a single-leaf, glazed wood door; two floor-length two-over-two double-hung wood windows; and a floor-length, four-over-two double-hung wood window.

**United States Department of the Interior
National Park Service**

**NATIONAL REGISTER OF HISTORIC PLACES
CONTINUATION SHEET**

Section: 7

Page: 7

South Cherry Street Historic District
Vicksburg, Warren County, Mississippi

-
22. C 1415 Baum Street c. 1900
A two-story, clapboard vernacular residence, facing south, with an asbestos-covered gable roof with a cross gable over a projecting bay. The gable end is enhanced by a vent of a Palladian design and sawtooth shingles. The two-story L-shaped porch is supported by brick columns on the first floor and square wood columns on brick bases on the second floor. A simple arched balustrade encloses the second floor porch and a low brick wall on the first floor. There are three bays: a three-part bay window with two-over-two, double-hung wood sash; a glazed, single-leaf wood door with sidelights and transom; and French doors with a multi-light transom and sidelights. A porte-cochere to the left side is supported with wooden columns on stuccoed brick piers.
23. C brick paving of Baum Street c. 1910
Baum Street, as well as other streets in the district were paved with bricks beginning around 1910. Baum Street is the only street that has not been covered with asphalt.

BELMONT STREET

24. C 1101 Belmont Street c. 1880
A one-story, clapboard four-bay galleried cottage, facing south, with an asphalt-covered gable roof. The full-width front porch is recessed under the main and is supported by five square Doric columns and enhanced with a clapboard-covered frieze. There is a central brick chimney. There are four bays: two single-leaf glazed wood doors flanked by pair of two-over-two, double-hung sash.
25. C 1102 Belmont Street c. 1925
A one-story, clapboard-covered cottage, facing north, with an asphalt-covered gable roof with exposed rafter ends. There is a central brick chimney. The full-width front porch is recessed under the main roof and is supported by turned posts and enhanced by a spindle balustrade. There are four bays: two single-leaf, glazed doors and two four-over-four, double-hung wood sash.
26. C 1106 Belmont Street c. 1880 Queen Anne
A two-story, clapboard and brick Queen Anne, facing north, with an asbestos-covered hip roof with a cross gable over a projecting bay. The gable end is enhanced with jigsawn ornamentation. The two-tiered porch was removed in the 1980s and has not as yet been rebuilt. There are four bays: a glazed, single leaf wood door with transom and a three-sided bay with three two-over-two double-hung wood sash.

**United States Department of the Interior
National Park Service**

**NATIONAL REGISTER OF HISTORIC PLACES
CONTINUATION SHEET**

Section: 7 Page: 8

South Cherry Street Historic District
Vicksburg, Warren County, Mississippi

CHAMBERS STREET

27. C 1303 Chambers Street c. 1930
A one-story, clapboard three-bay cottage, facing south, with an asphalt-covered gable roof. A gabled stoop supported by posts extends from the center. There are three bays: two four-over-one, double-hung wood sash and a single-leaf paneled door.
28. C 1303 Chambers Street c. 1930
A one-story, clapboard cottage, facing south, with an asbestos-covered gable roof with two gabled dormers with vents breaking the cornice. There is a corbelled brick end chimney. A carport with an asbestos-covered gable roof extends to the right side. There is a gabled stoop supported by heavy decorative brackets. There are four bays: two four-over-one, double-hung wood sash; a single-leaf paneled wood door with sidelights; and a multi-light fixed sash.
- 29A. C 1315 Chambers Street c. 1910 **Prairie Style**
H. R. Austin House
A two-story, vinyl-over-clapboard Prairie residence, facing south, with an asphalt-covered hip roof with widely overhanging eaves and a cross gable at the center front. There is an offset brick chimney. The one-story L-shaped front porch has a hipped roof with widely overhanging eaves and is supported by formed-concrete block columns. There are three bays: two one-over-one double-hung wood sash; and a single-leaf, glazed wood door with sidelights and transom.
- 29B. C Garage/apartment. c. 1930
A two-story two-car clapboard garage with an asphalt gable roof. There is a residence on the second floor. There are four one-over-one double-hung wood-framed sash on the second floor.
- 30A. PL 1322 Chambers Street c. 1910 **Neoclassical**
Fitz-Hugh Home
A two-story brick (Flemish bond) Neoclassical residence, facing north, capped by a green tile-covered hip roof which is pierced by two tall brick end chimneys and two gabled dormers. The dormers are filled with multi-light fixed sash. The cornice is enhanced with heavy modillions. The two-story portico is covered by a heavy gable roof supported with cast concrete Tuscan columns. There is a multi-light fanlight in the gable end which is further enhanced with modillions and a wide, plain frieze. There are five bays: four one-over-one double-hung wood-frame sash and double-leaf paneled doors with sidelights, a fanlight and a molded arched surround. There is a two-story screened-in porch on the right side which is covered by a flat roof with a modillion cornice.
- 30B. PL Garage. c. 1910
A brick one-car garage with a tile-covered hip roof.

United States Department of the Interior
National Park Service

NATIONAL REGISTER OF HISTORIC PLACES
CONTINUATION SHEET

Section: 7

Page: 9

South Cherry Street Historic District
Vicksburg, Warren County, Mississippi

-
31. C 1325 Chambers Street c. 1910 Colonial Revival
Dr. James B. Askew Home
A two-story, vinyl-over-stucco Colonial Revival residence, facing south, with an asphalt-covered hip roof with a gabled dormer with two multi-light, fixed sash and widely overhanging eaves. There are two stuccoed end chimneys and an interior stuccoed chimney. The one-story L-shaped porch has a flat roof supported by Doric columns accented by a wide plain frieze. The heavy balustrade that originally rested on the roof of the porch has been removed. A second story porch has been added over the right side porch. It has a shed roof supported by round Doric columns. There are four bays: three, one-over-one, double-hung wood sash and a glazed single-leaf wood door with leaded glass transom and sidelights.
- 32A. C. 1328 Chambers Street c. 1904 Colonial Revival
Robert C. Colhoun House
A two-story, clapboard Colonial Revival residence, facing north, with an asphalt-covered hip roof with widely overhanging eaves and a three-light hipped dormer. The existing wrap-around porch is covered by a flat roof supported by brick columns with wooden capitals and two wooden Doric columns at the entrance. A heavy turned balustrade encloses the porch and the same design is used on the roof of the porch. The original porch was a small one to the right of the bay and it was changed to the present porch between 1913 and 1925. There are five bays: three one-over-one double-hung wood windows; a floor-length, one-over-one double-hung wood window; and a single-leaf glazed door with a large, multi-light, fixed sash on the right side.
- 32B. NC Garage. c. 2003
A one-story hardy-plank-covered garage with two faux windows covered with shutters and an arched multi-light sash with shutters in the gable end. The vehicular entrance is into the side. Sensitively designed.
33. C 1332 Chambers Street c. 1910 American Foursquare
Bertha Shlenker House
A two-story, stuccoed American Foursquare with Mission Revival influence residence, facing north, with an asphalt hip roof with exposed rafter ends. The porch is covered by a hip roof supported by square columns with applied ornamentation. There is a Mission-style gabled dormer in the center with a vent flanked by four-light fixed sashes. There are two bays: a multi-light-over-two double-hung window with shutters and a single-leaf, glazed door with leaded transom and sidelights.

**United States Department of the Interior
National Park Service**

**NATIONAL REGISTER OF HISTORIC PLACES
CONTINUATION SHEET**

Section: 7

Page: 10

South Cherry Street Historic District
Vicksburg, Warren County, Mississippi

-
- 34A. C 1333 Chambers Street c. 1900 Shingle Style
J. J. Lum House
A two-story, shingle and formed concrete block modified Shingle style residence, facing south, with an asphalt-covered hip roof with a cross gable over a three-sided bay. There is a brick, offset chimney. The two-tiered, L-shaped porch is supported by shingle-covered arches resting on formed concrete block piers. The second floor porch has been enclosed with glass. There are four bays: double-leaf, glazed doors with a transom and three one-over-one, double-hung wood sash. This bay extends two floors and has shingles and a round vent in the gable end. A retaining wall along the front property line is constructed on cast-concrete block.
- 34B. C Garage. c. 1900
A two-story four-car clapboard garage with an asphalt gable roof. Six-over-six double-hung wood-frame sash project into the roof creating gabled dormers. There are four sets of wood double doors on the first floor allowing vehicular access to the garage. There is a porch on the right end of the building. The building was originally a stables.
35. C 1337 Chambers Street c. 1902 Free Classic Queen Anne
J. D. Vincent House
A two-story, clapboard Free Classic Queen Anne residence, facing south, with an asphalt-covered hip roof with a cross gable at the front and on both sides. The two-tiered L-shaped porch has a flat roof supported by Doric columns on both tiers. There is a narrow slate-covered mansard roof between the two tiers. The second tier and the side of the first have been screened. A turned balustrade and modillions at the cornice complete both tiers. The gable end of the projecting bay has an arched window flanked by jigsawn vents. The same ornamentation is found at the cornice of the projecting bay. There are four bays: three one-over-one double-hung wood sash flanked by shutters; and double-leaf glazed wood doors with a transom, pilasters and a small entablature.
36. C 1338 Chambers Street c. 1910 Romanesque Revival
William B. Levy House
A two-story, formed-concrete block Romanesque Revival residence, facing north, with a slate-covered hip roof. A gabled half-timbered dormer with three double-hung sash breaks the cornice at the front. There is an offset formed-concrete block chimney. There is a full-width arcaded porch with a flat roof supported by formed concrete blocks. There are five bays: four multi-light leaded-over-one sash; and double-leaf leaded doors with a transom.
37. PL 1402 Chambers Street c. 1900 Tudor Revival
Harding-Johnston Home.
A two-story brick Tudor Revival residence with a slate gable roof with cross gables. The front porch is recessed under the second story which is supported by round and square Doric columns. The second floor is half-timbered. There are six bays: three one-over-one double-hung wood-framed sash, two stained and leaded glass one-over-one double-hung wood-framed sash, and a single-leaf glazed door with transom.

United States Department of the Interior
National Park Service

NATIONAL REGISTER OF HISTORIC PLACES
CONTINUATION SHEET

Section: 7

Page: 11

South Cherry Street Historic District
Vicksburg, Warren County, Mississippi

38. C 1403 Chambers Street c. 1904 Colonial Revival

Thomas Catchings House

A two-story, clapboard Colonial Revival residence, facing south, with an asphalt-covered truncated-hip roof. There are two brick end chimneys. The entrance is covered by a rectangular-shaped portico with a flat roof supported by four Doric columns, which is topped by a rectangular projecting bay on the second floor enhanced with pilasters supporting a plain frieze. Above this bay is a large dormer with a multi-light sash and elliptical roof. There are four bays: three twelve-over-one double-hung wood sash and a glazed single-leaf door enhanced by pilasters and a denticulated entablature. There is a two-tiered, glassed-in porch on the right side of the house with a flat roof supported by Doric columns. A wrought iron fence defines the property line on the front and left side.

- 39A. C 1407 Chambers Street c. 1905 Colonial Revival

Oliver W. Catchings House

A two-story, clapboard Colonial Revival residence, facing south, with a slate-covered, truncated-hip roof pierced by two, corbelled brick end chimneys. There are two gabled dormers with arched two-light sashes flanked by pilasters supporting the return eaves. There is a denticulated frieze at the roof. A semi-circular portico covers the entrance and is supported by Ionic columns. A heavy, turned balustrade tops the portico and encircles the areas to the sides of the portico on the first floor. There are three bays: two one-over-one, double-hung sash; and a glazed, single-leaf, door with leaded sidelights, transom and Ionic pilasters. There is a two-tiered screened porch on the right side topped with a flat roof supported by Doric columns. A wrought iron fence defines the property line along Chambers Street.

- 39B. C Garage. c. 1930

A one-story one-car clapboard garage with an asphalt gable roof.

40. C 1414 Chambers Street c. 1904 Mission Revival

Edward M. Durham House

A two-story stucco Mission Revival residence, facing north, with a slate-covered hip roof with exposed rafter ends in the widely overhanging eaves. There are two-offset stuccoed chimneys and a stuccoed end chimney. There is a hooded dormer with a four-part arched sash. The one-story, L-shaped porch has a flat roof supported by stuccoed piers. There is a wide wooden cornice with brackets and a decorative arch at the entrance. There are three bays: two sets of four-over-one double-hung wood sash and a single leaf, paneled door with pilasters. There are multi-light casement windows with transoms on the second floor.

**United States Department of the Interior
National Park Service**

**NATIONAL REGISTER OF HISTORIC PLACES
CONTINUATION SHEET**

Section: 7

Page: 12

South Cherry Street Historic District
Vicksburg, Warren County, Mississippi

-
- 41A. C 1419 Chambers Street c. 1907 Colonial Revival
Lucien W. Oates House
A two-story, clapboard, five-bay, Colonial Revival residence, facing south, with an asbestos-covered hip roof. The portico has a flat roof supported by large stuccoed square piers. A balustrade tops the portico roof. There are five bays: four six-over-six double-hung wood sash and a single-leaf paneled door with leaded sidelights and transom. Pilasters and an entablature further enhance the entrance. There is a one-story, screened porch on the right side of the residence which is supported by stuccoed square piers and the roof is topped with a balustrade.
- 41B. C Garage. c. 1930
A one-story clapboard-sided garage covered with as asphalt-covered gable roof.
42. C 1420 Chambers Street c. 1905 Colonial Revival
Frank H. Andrews House
A two-story, clapboard Colonial Revival residence, facing north, with a fiberglass shingle-covered hip roof enhanced by a wide denticulated cornice and a hipped dormer containing three multi-light sash. There is an offset, corbelled, brick chimney. A three-sided two-story bay projects from the center of the structure. On the first floor this bay contains three double-hung, nine-over-two sash flanked by bi-fold shutters. The center of the second story bay has a small, multi-light, square window flanked by double-hung wood windows identical to the first floor. There is a simple balustrade atop this projection. The full-length porch has a low hip roof supported by four Doric columns on square, paneled bases. A simple balustrade with a molded rail encloses the porch. There are two bays to the right of the projecting bay: a glazed single-leaf door with a two-light transom and a nine-over-two double-hung wood window. There are two bays to the left: a twenty-light fixed window and a pair of French doors.
- B. NC Garage. c. 2001
A sensitively-designed one-story clapboard garage.

CHERRY STREET

43. NC 1514 Cherry Street c. 1990
A one-story brick and stucco contemporary building, facing east, with a flat roof. The building is broken up into three storefronts which each have plate glass storefronts and full-view double-leaf glass doors.
44. NC 1515 Cherry Street c. 1970
A one-story modern brick commercial building, facing west, with a flat roof. The entry is recessed and hidden by a pair of paneled blinds.

**United States Department of the Interior
National Park Service**

**NATIONAL REGISTER OF HISTORIC PLACES
CONTINUATION SHEET**

Section: 7 Page: 13

South Cherry Street Historic District
Vicksburg, Warren County, Mississippi

-
45. NC 1524 Cherry Street c. 1960
A one-story modern concrete-block garage, facing east, with a flat roof. There are two metal roll-up doors.
- 46A. NC 1604 Cherry Street c. 1986
A one-story modern stuccoed commercial building, facing east, with a flat roof. The entrance, covered by a flat-roofed portico supported with four round Doric columns, is a pair of plate-glass doors flanked by aluminum windows. A row of aluminum windows is the only other bay on the facade.
- 46B. NC Drive-through facility c. 2000
A drive-through bank building.
47. NC 1607 Cherry Street c. 1960
First Baptist Church
A two-story brick U-shaped church with a fiberglass-covered gable roof. A 150-foot square tower dominates the northeast corner of the inside of the U. The sashes are all six-over-six and the doors are double-leaf, paneled with multi-light transoms and classical surrounds. Corbelled quoins enhance the corners of the building.
48. C 1618 Cherry Street c. 1930 Traditional commercial
A one-story stucco commercial building with a flat roof and a Mission-shaped parapet capped with barrel tiles. There are three bays: two one-over-one double-hung sash and a single-leaf paneled door. The stoop is covered by an arched roof supported by square stuccoed columns.
49. C 1620 Cherry Street c. 1930 Traditional commercial
Malick Joseph Tobacco Company
A one-story brick commercial building with a flat roof and a stepped parapet. The facade features a traditional storefront with plate glass windows over a tiled bulkhead with a recessed entry with double-leaf glazed doors. The flat awning is suspended from a concrete lintel.
50. NC 1708 Cherry Street c. 1970
A modern two-story, brick nursing home.
51. C 1711 Cherry Street c. 1875, alterations c. 1913-1925
A two-story clapboard three-bay galleried townhouse, facing west, with an asphalt-covered hip roof enhanced by widely over-hanging eaves supported by large, simple brackets. The full-width front porch is covered by a truncated hip roof supported with three large square brick columns. A low brick wall with a concrete cap runs between the columns. There are three bays: two one-over-one double-hung windows and a single-leaf glazed door with sidelights and a transom. There are three bays on the second floor: two one-over-one double-hung wood windows and a single-leaf French door with a multi-light transom. Originally the porch was two-tiered.

**United States Department of the Interior
National Park Service**

**NATIONAL REGISTER OF HISTORIC PLACES
CONTINUATION SHEET**

Section: 7

Page: 14

South Cherry Street Historic District
Vicksburg, Warren County, Mississippi

The change to a one-story porch and the addition of the brick columns and the eave brackets were made between 1913 and 1925.

52. C 1714 Cherry Street c. 1870
A one-story clapboard five-bay galleried cottage, facing east, with an asphalt-covered hip roof. The full-width front gallery is covered with a flat roof supported by non-historic wrought-iron columns and railing. The porch was originally supported by Vicksburg pierced columns. There are five bays: four floor-length, nine-over-six double-hung wood sash flanked by shutters and a single-leaf paneled door with sidelights and transom. There is an interior brick chimney on the north side.
53. C 1717 Cherry Street c. 1870
A two-story brick three-bay galleried townhouse, facing west, with an asbestos-covered hip roof. The cornice is enhanced with paired brackets. The two-tiered front gallery is supported with chamfered posts with jigsaw brackets and is enhanced with a jigsaw balustrade on the second tier and on the sides of the first tier. There are three bays: two floor-length six-over-nine double-hung wooden windows and a single leaf paneled wood door with sidelights and transom. This pattern is mimicked on the second floor.
54. PL 1805 Cherry Street c. 1924 Tudor Gothic
Carr Junior High School
A symmetrical three-story red brick institutional building, facing west, designed in the Tudor Gothic style. The roof is flat and hidden behind a stepped parapet wall capped with a limestone coping. The main facade features a central projecting rectangular bay that houses the main entrance at the second floor level and a three-part metal window with pivot sash on the third story. A stepped parapet rises above the parapet of the main part of the roof and bears the inscription "Carr Junior High School" in limestone. The main entrance, originally recessed behind a segmental-arched opening, is accessed by a three-platform staircase. In front of the first platform is a marble plaque which lists the names of the mayor and aldermen, city clerk, school board trustees, superintendent, architect, and builder. On either side of this central bay is a three-part multi-pane metal window with pivot sash on each of the three floors. A rectangular bay projects forward to each end of the building and features a four-part metal window containing four six-over-three-over-six pivot sash windows on each floor. A plain stone belt course separates the first and second floors and another divides the third floor from the parapet. The four bays on the second story are enhanced with limestone label lintels.
55. C 1810 Cherry Street c. 1875, alterations c. 1902-1907 Queen Anne
Vick-Shannon House
A one-story cast-concrete block (that resembles ashlar stone) Queen Anne residence, facing east, surmounted by a metal-covered hip roof with cross hips and gables and the eaves are plain and widely overhanging. There are end chimneys (cast concrete) on either side. There is a one-story full-width front porch supported by three squat round concrete columns resting on tall cast concrete piers. A low cast concrete block wall completes the floor of the porch while a wrought iron balustrade tops the flat porch roof with its widely-overhanging eaves.

United States Department of the Interior
National Park Service

NATIONAL REGISTER OF HISTORIC PLACES
CONTINUATION SHEET

Section: 7

Page: 15

South Cherry Street Historic District
Vicksburg, Warren County, Mississippi

When built circa 1875, this house was clapboard with a two-tiered full-width front porch. The veneer and the change to the existing porch were made between 1902 and 1907. There are four bays: two multi-light-over-one double-hung wooden windows, a single-leaf glazed door with transom, and a multi-light-over-one double-hung wooden window in a curved bay. A cast-concrete block wall defines the front footage of the property.

56. C 1816 Cherry Street c. 1875 Italianate
A two-story brick Italianate residence, facing east, with a slate-covered gable roof with a cross gable over a projecting room. Metal cresting caps the ridge. The cornice is enhanced with paired brackets and applied molding. The one-story porch set to the right of the projecting room is covered by a flat roof supported by square wooden posts with jigsawn brackets. The cornice is enhanced with paired brackets. There are four bays on the first floor: a two-over-two double-hung wood-framed sash in a square bay which is capped with a pierced wooden balustrade on a flat roof; a single-leaf paneled door with sidelights and an arched two-light transom; and two floor-length two-over-four double-hung wood-frame sash enhanced by corbelled brick window heads. The house sits on a hill which is supported by an original brick wall across the front of the property.
57. C 1818 Cherry Street c. 1875 Italianate
A two-story clapboard three-bay galleried townhouse capped with an asphalt-covered hip roof. The cornice is denticulated and enhanced with paired brackets. The two-tiered front porch is recessed under the main roof and is supported with square wood columns enhanced with molded capitals. A pierced balustrade completes the second tier of the porch. There are three bays: two floor-length two-over-four double-hung wood-framed sash and a single-leaf paneled door with sidelights and transom and enhanced with pilasters and an elaborate entablature. The house sits on a hill which is supported by an original brick wall across the front of the property.
58. C 1830 Cherry Street c. 1860, alterations c. 1970s Greek Revival
Judge James Cowan House
A two-story brick Greek Revival residence with an asbestos hip roof. The two-story porch is covered by a gable roof supported with four wooden Doric columns and enhanced with a window-vent combination that resembles a Palladian window. There are five bays: two floor-length six-over-nine double-hung wood-framed sash, two single-leaf French doors with transoms, and a single-leaf paneled door with transom and sidelights. The building was remodeled in the 1970s - the Greek Revival porch replaced an Italianate porch, an addition was made to the rear increasing the south facade by three bays and a *porte cochere* supported by square brick columns was also added to the south facade.
59. C 1831 Cherry Street c. 1880
A one-story clapboard five-bay galleried cottage, facing west, with an asphalt-covered hip roof. The full-width front porch is covered by a flat roof supported by six pierced columns and the cornice is bracketed. There are five bays: four floor-length six-over-nine double-hung wooden windows and a single-leaf paneled door with sidelights and transom.

**United States Department of the Interior
National Park Service**

**NATIONAL REGISTER OF HISTORIC PLACES
CONTINUATION SHEET**

Section: 7

Page: 16

South Cherry Street Historic District
Vicksburg, Warren County, Mississippi

-
60. NC 1837 Cherry Street c. 1885 Victorian vernacular
A one-story clapboard Victorian vernacular residential building, facing west, that has been converted into a commercial building. The building is covered with an asphalt-covered gable roof with a cross gable over a porch that has been enclosed. All of the fenestration is non-historic, the clapboard has been covered with aluminum siding, and a large metal addition has been made to the south side.
61. C Cherry Street Bridge c. 1911
A concrete bridge constructed to carry Cherry Street over the railroad tracks.
62. NC 1900 Cherry Street c. 1975
State Bank
A two-story modern stucco commercial building, facing east, with a flat roof.
63. NC 1905 Cherry Street c. 1980
United Cleaners
A one-story modern brick commercial building, facing west, with a flat roof.
64. C 1907 Cherry Street c. 1880 Victorian vernacular
A two-story, clapboard, Victorian vernacular residence, facing west, with a pressed-metal gable roof with the gable end facing the street. There is a pointed-arched vent and stick work in the gable end. The one-story, full-width porch has a low hip roof supported by chamfered posts and applied molding ornaments the porch frieze. There are three bays: two, floor length six-over-nine double-hung wood sash and a single leaf paneled door accented by pilasters, an entablature, sidelights and transom.
65. C 1909 Cherry Street c. 1880 Victorian vernacular
A two-story, clapboard, three-bay, Victorian vernacular residence, facing west, with a pressed-metal gable roof with the gable end facing the street. There is a pointed arch vent and stick work in the gable end. The one-story full-width porch has a low hip roof supported by chaffered posts with decorative brackets and applied molding ornaments the porch frieze. There are three bays: two six-over-nine, double-hung sash and a single-leaf paneled door accented by pilasters and an entablature, sidelights and transom.
66. C 2002 Cherry Street c.1906 Neoclassical
A two-story, brick, four-bay, Neoclassical residence, facing east, with an asphalt-covered hip roof with a cross gable facing front. The two-story porch has a gable roof supported by four Ionic, fluted columns with a projecting gable at the center supported by two fluted Ionic columns. The gable end, cornice and the cornice of the projection are denticulated. There are four bays: two one-over-one, double-hung aluminum windows; a glazed single-leaf door with transom; and a glazed single-leaf door with sidelights and elliptical transom. Pilasters separate the door from the sidelights and a heavy stuccoed elliptical lintel caps the entry. There is a balcony supported by heavy brackets and featuring a turned balustrade over the entry. Entrance onto the

**United States Department of the Interior
National Park Service**

**NATIONAL REGISTER OF HISTORIC PLACES
CONTINUATION SHEET**

Section: 7

Page: 17

South Cherry Street Historic District
Vicksburg, Warren County, Mississippi

balcony is gained through leaded French doors with leaded sidelights. All but one of the mantels in this house date to an earlier time. The mantels may have come from the house that previously occupied this lot.

67. C 2006 Cherry Street c. 1900
A one-story, brick cottage, facing east, with an asphalt-covered gable roof with a cross gable over a projecting bay on the left. There is a central corbelled brick chimney. The front facade of this house has been re-sided with brick and the porch has been changed. The removal of the brick on the facade would make this building contributing.
- 68A. PL 2011 Cherry Street c. 1906 Tudor Revival
Craig-Flowers Home
A three-story, brick 12,000-square foot Tudor residence, facing west, and situated on its original three-acre site. The multiple gabled slate roofs are pierced by large and small dormers and five brick chimneys. A large one-story gallery surrounds the house on the south and west sides and has a flat roof. The front gallery and entrance area are articulated by brick pilasters and columns decorated with plaster inserts at the capital. A lesser shed roof porch extends along the southeast side of the building. The first floor features a plaster decorative band all around at the height of the window heads. The second floor and exposed attic walls are stucco panels between chestnut wood members running horizontally and vertically, with trim. The slate roof has carved and decorated wood fascias and sloped soffits with exposed, decorated framing. There are one-over-one double-hung wood windows and double-leaf paneled wood doors in an ornate wood frame with inset decorated panels, symmetrical leaded glass sidelights and original copper screen doors.
- 68B. PL Carriage House c. 1906
A one-story clapboard and brick carriage house and stables topped with an asphalt-covered bell-cast roof which is pierced by a hipped dormer which has an opening without sash. There are three bays: two openings without sash and a pair of sliding wood doors.
- 68C. PL Servant's Quarters c. 1906
A one-story clapboard residence, facing east, on a raised brick basement. An asphalt-covered bell-cast roof covers the building. The full-width front porch is covered by an asphalt-hip roof supported by square posts linked by a plain balustrade.
69. C 2021 Cherry Street c. 1930
A one-story, asbestos-covered three-bay cottage, facing west, with an asphalt-covered gable roof. The porch is covered by a shed roof supported by tapered posts. There are three bays: two double-hung, three-over-one sash and a single-leaf glazed door.

United States Department of the Interior
National Park Service

NATIONAL REGISTER OF HISTORIC PLACES
CONTINUATION SHEET

Section: 7

Page: 18

South Cherry Street Historic District
Vicksburg, Warren County, Mississippi

-
70. C 2022 Cherry Street c. 1905 Craftsman bungalow
A one-story, asbestos-covered three-bay bungalow, facing east, with an asbestos-covered gable roof with a cross gable to the front over a porch that is supported by square stuccoed piers. There is a stuccoed end chimney and a gabled vent. There are three bays: two sets of double-hung nine-over-one sash and a single-leaf glazed door.
71. C 2023 Cherry Street c. 1900
A two-story, asbestos-covered three-bay garage, facing west, with an apartment on the second floor and an asphalt-covered gable roof. There are three bays: two four-over-one, double-hung sash; and a glazed single-leaf door.
72. C 2025 Cherry Street c. 1890 Victorian vernacular
A two-story, clapboard Victorian vernacular residence, facing west, with an asphalt-covered hip roof with cross gables. There is an offset brick chimney. There is a knee brace and eaves drops in the gable end. There is a gabled stoop supported by turned posts with jigsawn brackets. There are four bays: three one-over-one double-hung wood windows; and a single-leaf, glazed door with an entablature, pilasters and a transom.
73. C 2027 Cherry Street c. 1890 Victorian vernacular
A two-story, aluminum-sided, Victorian vernacular, facing west, with a pressed-metal hip roof and a cross gable over a projecting bay with jigsawn brackets at the cornice. There is a corbelled brick end chimney. There is a gable stoop supported by non-historic brick piers. There are four bays: a single-leaf paneled door and a three-part bay with one-over-one double-hung windows. The residence has lost some of its integrity by the addition of aluminum siding. However, the removal of these changes would make the building contributing.
74. NC 2101 Cherry Street c. 1960
Trustmark National Bank
A one-story, modern brick office building.
75. NC 2106 Cherry Street c. 1940
A one-story traditional-styled brick commercial building with a gable roof hidden behind a metal-faced parapet. The traditional storefront has been changed to shorter plate glass windows and a single-leaf plate glass door. This building would be contributing if the metal on the parapet was removed and the brick infill was removed and storefront windows restored.
- 76A. PL 2108 Cherry Street c. 1913 Mediterranean
The Feld Home
A one-story stucco Mediterranean style residence, facing east, with a blue tile hip roof with cross hips. The widely-overhanging eaves are enhanced with paired brackets. The projecting wings of the facade and rear form courtyards in an H-shaped plan. Each wing has a piazza with Palladian opening. There are five bays: four casement windows set in arched openings with multi-light transoms and sidelights and double-leaf glazed doors

**United States Department of the Interior
National Park Service**

**NATIONAL REGISTER OF HISTORIC PLACES
CONTINUATION SHEET**

Section: 7

Page: 19

South Cherry Street Historic District
Vicksburg, Warren County, Mississippi

with a multi-light transom. The entrance is further enhanced by six marbleized cast concrete columns supporting a bracketed and denticulated entablature that is capped with a heavy balustrade.

- 76B. PL Garage. c. 1920
A one-story, two-car clapboard-sided garage with an asphalt-covered gable roof.
- 77A. C 2111 Cherry Street c. 1920 Mission Revival
A one-story, stucco, Mission Revival residence, facing east, with an asbestos-covered hip roof. There are two stuccoed end chimneys. The full-width front porch is recessed under the main roof which is supported with stuccoed columns. The porch is screened on the right side. A stuccoed Mission-gabled arch is centered in front of the porch. There are three bays: two pair of nine-over-one double-hung wood sash and a glazed single-leaf door.
- 77B. C Garage. c. 1950
A one-story two-car clapboard garage with an asphalt-covered gable roof.
- 77C. C Utility building. c. 1920
A one-story clapboard utility building with an asphalt-covered gable roof.
78. C 2119 Cherry Street c. 1875 Italianate
A two-story, clapboard Italianate residence, facing east, with an asphalt-covered gable roof with a cross gable over a projecting room. The cornice has paired scroll brackets and is denticulated. There are two brick chimneys: an offset chimney and a flush gable brick chimney. The one-story porch to the left of the projecting bay has a flat roof supported with square posts enhanced by applied molding and jigsawn brackets. There are scroll brackets and dentils at the cornice. A jigsawn balustrade completes the porch. There are five bays: two floor-length two-over-two double-hung wood sash with shaped heads; two double-hung two-over-two wood sash; and a center entrance comprised of glazed double-leaf doors with an arched transom. The entrance is further enhanced with fluted pilasters and an arched entablature.
- 79A. C 2125 Cherry Street c. 1878
A one-story, vinyl-sided five-bay galleried cottage, facing west, with an asphalt-covered gable roof. There is an offset, brick chimney. The full-length front porch is recessed under the main roof and is supported by six square columns. There are five bays: four floor-length, double-hung, six-over-nine sash; and a single-leaf paneled door with sidelights and a fanlight.
- 79B. NC Garage. c. 2001.
Two-car, clapboard garage with an asphalt-covered gable roof with cornice returns.

**United States Department of the Interior
National Park Service**

**NATIONAL REGISTER OF HISTORIC PLACES
CONTINUATION SHEET**

Section: 7

Page: 20

South Cherry Street Historic District
Vicksburg, Warren County, Mississippi

-
80. C 2130 Cherry Street c. 1920
A one-story, asbestos-sided, three-bay, bungalow, facing east, with an asphalt-covered gable roof with exposed rafters. A cross gable supported by brick piers covers a full-width front porch. The porch is screened and a three-part vent is evident in the gable end. There are three bays: two fifteen-over-one, double-hung sash and a glazed single-leaf door with a transom.
81. C 2132 Cherry Street c. 1910
A two-story, brick residence, facing east, with an asphalt-covered gable roof with widely-overhanging eaves. There is a corbelled brick end chimney and a central corbelled brick chimney. A gabled dormer pierces the roof and contains a three-part window and quoins. The one-story porch is covered by a flat roof supported by Doric columns and topped with a heavy balustrade. There are three bays: two, multi-over-one, double-hung wood windows and a glazed single-leaf wood door.
82. C 2134 Cherry Street c. 1915 Colonial Revival
A one-story, clapboard Colonial Revival residence, facing east, with an asphalt-covered hip roof and a cross gable over a projecting room. There is an offset corbelled brick chimney and an end corbelled brick chimney. The porch to the left of the projection has a flat roof supported by three wood Ionic columns on stuccoed piers. A simple non-historic balustrade encloses the porch. There are seven bays: six one-over-one double-hung sash with non-historic shutters and a single-leaf glazed door with transom.
83. C 2135 Cherry Street c. 1900
A two-story, clapboard vernacular residence, facing west, with an asbestos-covered hip roof with cross gables over projecting bays on the left and right of the facade. There are two offset, corbelled, brick chimneys. A small porch spans the space between the two projecting bays and has a flat roof with no evident vertical support. There are five bays: three multi-light casement windows; a series of multi-light casement windows; and glazed double-leaf doors with a transom. A Palladian window is positioned on the second floor above the entry. There is an arched one-over-one, double-hung window in the gable end on the right and an arched vent in the gable end on the left.
84. C 2137 Cherry Street c. 1930
A one-story, clapboard, three-bay cottage, facing west, with an asphalt-covered gable roof. A gabled hood protects the entry. There are three bays: two four-over-one, double-hung sash and a glazed single-leaf door.
85. C 2137½ Cherry Street c. 1930
A one-story clapboard cottage, facing west, with an asphalt-covered roof. The full-width front porch is screened. There are three bays: two four-over-one, double-hung sash and a glazed single-leaf door.

**United States Department of the Interior
National Park Service**

**NATIONAL REGISTER OF HISTORIC PLACES
CONTINUATION SHEET**

Section: 7

Page: 21

South Cherry Street Historic District
Vicksburg, Warren County, Mississippi

-
86. C 2139 Cherry Street c. 1930
A one-story, clapboard, three-bay cottage facing west, with an asphalt-covered gable roof and a cross gable at the front with an elongated rectangular vent. There are three bays: two four-over-one double-hung windows and a single-leaf paneled door.
87. C 2200 Cherry Street c. 1880, alterations 1907-1913 Queen Anne
A two-story, formed concrete block that resembles rusticated stone, residence, facing east, with a slate-covered hip roof and a cross gable over a projecting bay. There is a Palladian window in the gable end. There are two stuccoed end chimneys. The full-width front porch has a flat roof supported by formed concrete-block piers and topped by a heavy balustrade. The cast concrete siding was added to the clapboard residence sometime between 1907 and 1913. At the same time, a two-story porch on the right rear corner was enclosed and a two-story full-width porch was added to the rear of the house. There are three bays: a three-part bay window with two-over-two, double-hung wood windows and a two-over-four floor-length wood window; a single-leaf glazed door with sidelights and transom; and a two-over-two double-hung sash.
88. C 2201 Cherry Street c. 1920
A two-story, stucco residence, facing west, with an asbestos-covered hip roof. A two-tiered porch is recessed, to the left, under the main roof and is supported by a square stuccoed pier. There are two bays: a single-leaf paneled door and a set of three, six-over-one, double-hung wood windows.
89. C 2205 Cherry Street c. 1920
A two-story, clapboard residence, facing west, with an asbestos gable roof with exposed rafter ends. There is a large two-part square vent in the gable end. The one-story full-width front porch is covered by a hip roof with widely overhanging eaves supported by tapered columns on stuccoed piers. There are two bays: a three-part window with one-over-one double-hung sash and a single-leaf glazed door.
90. C 2206 Cherry Street c. 1880 Queen Anne
A one-story, clapboard Queen Anne cottage, facing east, with an asphalt-covered gable roof and a cross gable over a projecting bay. There is an arched vent and fishscale shingles in the gable end. The porch is covered by a shed roof with exposed rafter ends supported by three square Doric wood columns on stuccoed bases. A plain balustrade encloses the porch. There are four bays: a three-part window with a double-hung twelve-over-one window flanked by eight-over-one double-hung wood sash; two sets of wooden French doors; and double-leaf glazed doors with a transom.
91. C 2209 Cherry Street c. 1902 Romanesque Revival
A one-story, formed concrete block Romanesque Revival residence, facing west, with an asphalt-covered hip roof with a hipped dormer with three double-hung, one-over-one wood sash. There are two offset corbelled brick chimneys. The arcaded porch is recessed under the main roof and is supported by formed concrete block

**United States Department of the Interior
National Park Service**

**NATIONAL REGISTER OF HISTORIC PLACES
CONTINUATION SHEET**

Section: 7

Page: 22

South Cherry Street Historic District
Vicksburg, Warren County, Mississippi

arches on piers. There are five bays: a bay window with three, sixteen-over-one, double-hung sash; a single-leaf glazed door with sidelights and a transom; and two, sixteen-over-one, double-hung wood sash.

- 92A. PL 2212 Cherry Street c. 1907 Prairie Style
Shlenker House.

A two-story brick Prairie residence, facing east, with a large red-tiled truncated hip roof pierced by two brick end chimneys. The roof has widely overhanging eaves supported by large curved brackets. The one-story porch is centered on the front facade and is capped by a flat roof supported by large square brick piers which are decorated with applied concrete ornamentation. The roof is enhanced by a jigsawn balustrade. There are three bays: two one-over-one double-hung wood-framed sash which project slightly from the face of the building and are covered with tiled shed roofs and a single-leaf, glazed door with sidelights and transom.

- B. PL Garage apartment c. 1910
A one-story clapboard one-car garage that has been rehabilitated for residential use.

93. C 2213 Cherry Street c. 1900, alterations 1907-1913 Queen Anne
A two-story, formed concrete block Queen Anne residence, facing west, with a slate-covered hip roof with a cross gable to the front with return eaves. The porch is on the left and is covered with a flat roof with wide eaves and a plain cornice supported with round Doric columns resting on a formed concrete block wall. There is a two-story round tower on the north side of the building which has an asphalt-covered conical roof. The porch originally extended across the front and around the right side. It was changed to the current configuration between 1907 and 1913. There are four bays on the first floor: double-leaf, glazed doors with a two light recessed transom panel, two double-hung one-over-one wood sash; and a three-part wood casement window.

94. C 2224 Cherry Street c. 1897 Queen Anne
A two-story, clapboard, Queen Anne residence, facing east, with an asbestos-covered hip roof. A two-story turret has a bell-cast hip roof and fishscale shingles in the area above the main roof of the house. There is an offset, stuccoed chimney. The one-story porch is to the left of the turret and has a hip roof supported with Doric columns. Originally the porch extended across the width of the facade. There are three bays: a contemporary multi-light fixed sash; a six-over-six double-hung window; and a single-leaf paneled door with fanlight, sidelights, and pilasters as side surrounds.

95. C 2238 Cherry Street c. 1895 Victorian vernacular
A two-story, clapboard Victorian vernacular residence, facing east, with an asphalt-covered hip roof. The one-story, full-width front porch is covered by a shed roof supported by four turned posts with jigsawn brackets. There are three bays: two floor-length, double-hung, two-over-two wood sash; and a glazed single-leaf door with a transom and entablature with pilasters as side surrounds.

United States Department of the Interior
National Park Service

NATIONAL REGISTER OF HISTORIC PLACES
CONTINUATION SHEET

Section: 7

Page: 23

South Cherry Street Historic District
Vicksburg, Warren County, Mississippi

-
96. C 2240 Cherry Street c. 1935
A two-story, U-shaped, brick apartment complex, facing east, with an asphalt-covered gable roof with a cross gable. The U-shaped building presents two facades to the street, identical to each other; four bays which are a pair of six-over-six double-hung wood windows; a six-over-six double-hung wood sash; and two single-leaf paneled doors. There is a small balcony under two doors on the second floor.
97. C 2302 Cherry Street c. 1900 Victorian vernacular
A two-story, clapboard, two-bay, Victorian vernacular residence, facing east, with a slate-covered truncated hip roof with cresting and a cross gable. Two offset corbelled brick chimneys break the roof line. There is an arched window and fishscale shingles in the gable end. The small stoop is covered by a flat roof and supported with two Doric columns. A screened one-story porch is attached to the left side of the house. There are two bays: a leaded, one-over-one, double-hung window and a pair of French doors with transoms. There is also an oval stained glass fixed-sash.
98. C 2312 Cherry Street c. 1910 Colonial Revival
A two-story, brick, Colonial Revival residence, facing east, with an asphalt-covered gable roof. There is a corbelled brick chimney. A center square bay extends above the roof line and has a flat roof. The residence has lost much of its integrity through the addition of new brick veneer, and changes to the porch and fenestration.
99. C 2315 Cherry Street c. 1900
A two-story, brick eclectic residence, facing west, with a tile-covered hip roof with cross gables. The porch has a flat roof, topped with a heavy stuccoed balustrade, supported by six sets of paired stuccoed Doric columns. There is a two-tiered porch on the right side supported by Doric columns and brick piers. There is a large gable dormer at the center front with an arched window. There are six bays: four one-over-one, double-hung sash with limestone lintels and a single-leaf door with sidelights and transom.
- 100A. C 2322 Cherry Street c. 1910 Spanish Revival
A two-story, brick Spanish Revival residence, facing east with a tile-covered hip roof. There is a corbelled brick end chimney. A portico with a flat roof supported by two square brick columns and two Doric columns occupies a corner of the residence. There is a one-story porch on either side of the house. There are five bays: double-leaf, glazed doors with a fanlight and sidelights; and four sets of French doors with fanlights.
- 100B. C Garage/apartment. c. 1910
A two-story, brick two-car garage with a tile-covered hip roof. There is a full-width balcony on the second floor supported by extensions of the floors joists (the railing is a plain iron pipe without balusters). There are three bays on the second floor: two narrow French doors and a four-light fixed sash in between the two doors.

**United States Department of the Interior
National Park Service**

**NATIONAL REGISTER OF HISTORIC PLACES
CONTINUATION SHEET**

Section: 7

Page: 24

South Cherry Street Historic District
Vicksburg, Warren County, Mississippi

-
101. NC 2400 Cherry Street c. 1900, alterations c. 1980
A one-story, board and batten sided (non-historic) residence, facing east, with an asbestos-covered hip roof with a cross gable to the front over a projecting room. There is a stuccoed, central chimney. There are four bays: two, three-over-one double-hung wood sash, a pair of three-over-one double-hung wood windows, and a single-leaf glazed door. A gabled stoop is supported by a turned post. Originally there was an L-shaped porch on the right corner which has been enclosed. The building would be contributing with the removal of the board and batten siding.
102. C 2401 Cherry Street c. 1896
A one-story, clapboard five-bay galleried cottage, facing west, with an asbestos-covered hip roof. There are two chimneys: an end brick chimney and an offset brick chimney. The full-width front gallery is recessed under the main roof and is supported by six turned posts. A jigsawn balustrade completes the porch. There are five bays: four two-over-two, floor-length double-hung wood windows; and a single-leaf, glazed door with a two-light transom.
103. C 2404 Cherry Street c. 1900 Queen Anne
A one-story, vinyl-covered Queen Anne cottage, facing east, with an asphalt-covered cross-gabled roof with exposed rafter ends. The porch is recessed under the main roof and is supported by two turned posts. There are four bays: a single-leaf, glazed door; and two two-over-two double-hung sash; and a nine-over-nine double-hung sash.
104. C 2405 Cherry Street c. 1905
A one-story, clapboard cottage, facing west, with an asphalt-covered hip roof with a cross gable over a porch to the left which is supported by square brick columns. There are three bays: glazed double-leaf doors with a transom, entablature, and fluted pilasters; and a pair of two-over-two double-hung wood windows; and a floor-length, two-over-two, double-hung wood sash.
105. C 2408 Cherry Street c. 1900, alterations c. 1980 Queen Anne
A one-story, asbestos-covered Queen Anne cottage, facing east, with an asbestos-covered gable roof. There is a center corbelled brick chimney. There is a five-sided bay on the left side covered with an asbestos hip roof. To the right of this bay is a non-historic small porch covered by a flat roof supported by wrought-iron posts. The original corner porch has been enclosed with new brick. There are four bays: three one-over-one double-hung windows and a non-historic door.
106. NC 2409 Cherry Street c. 1970
A one-story, modern brick residence, facing west, with an asphalt-covered gable roof.

**United States Department of the Interior
National Park Service**

**NATIONAL REGISTER OF HISTORIC PLACES
CONTINUATION SHEET**

Section: 7

Page: 25

South Cherry Street Historic District
Vicksburg, Warren County, Mississippi

-
107. C 2412 Cherry Street c. 1885 Queen Anne
A one-story, clapboard Queen Anne cottage, facing east, with an asbestos-covered gabled roof with a cross gable with fishscale shingles over a projecting room. There are two offset corbelled brick chimneys. The porch to the right of the projecting bay has a flat roof supported by two tapered wood columns. A spindle balustrade completes the porch. There are five bays: four two-over-two, double-hung wood windows; and a glazed, single-leaf door with transom.
108. C 2413 Cherry Street c. 1900
A one-story, clapboard four-bay residence, facing west, with an asbestos-covered hip roof with a cross gable over a projecting bay. There is a center corbelled brick chimney. The porch to the left of the bay is recessed under the main roof and is supported by a Doric column resting on a brick pier. There are four bays: three four-over-four, double-hung wood windows; and a glazed, single-leaf door with a transom.
109. NC 2416 Cherry Street c. 1970
A one-story, modern, board and batten, three-bay, residence, facing east, with a flat roof.
110. C 2417 Cherry Street c. 1900
A one-story, clapboard three-bay galleried cottage facing west, with an asphalt-covered hip roof. There are two corbelled brick offset chimneys. The full-width front porch is recessed under the main roof and is supported by four turned posts. There are three bays: two six-over-six double-hung wood windows; and a single-leaf glazed door with a transom.
111. C 2419 Cherry Street c. 1900, alterations (windows) c. 1998
A one-story clapboard three-bay galleried cottage, facing west, with an asphalt-covered hip roof. The full-width front gallery is recessed under the main roof and is supported by square posts on brick piers. A simple balustrade completes the porch. There are three bays: two double-hung windows filled with contemporary sash (originally 6/6) and a single-leaf paneled door with transom.
112. C 2422 Cherry Street c. 1898 Queen Anne
A one-story, clapboard five-bay Queen Anne cottage, facing east, with a metal-covered gable roof with a cross gable over a projecting room. There are two offset corbelled brick chimneys. The gable end of the projection has boxed returns, a round vent and fishscale shingles. The porch to the right of the projection has a flat roof supported by turned posts. There are five bays: two non-historic aluminum sash; two two-over-two, double-hung wood windows and a single-leaf, glazed door with transom.
113. C 2423 Cherry Street c. 1900
A one-story, clapboard cottage, facing west, with an asphalt-covered gable roof with a cross gable over a projecting bay. There is a brick offset chimney. There is a porch added on the right which has a flat roof

**United States Department of the Interior
National Park Service**

**NATIONAL REGISTER OF HISTORIC PLACES
CONTINUATION SHEET**

Section: 7

Page: 26

South Cherry Street Historic District
Vicksburg, Warren County, Mississippi

supported by square posts. The original corner porch has been enclosed with multi-light casement windows and a single-leaf glazed wood door. There are four bays: three casement windows and a single-leaf glazed door.

114. C 2427 Cherry Street c. 1910
A one-story clapboard duplex, facing west, with an asphalt-covered hip roof with a cross gable piercing the roof over the full-width porch that is recessed under the main roof. The porch is supported by four wood Doric columns. There are four bays: two glazed and paneled wood doors with transoms and two three-over-two double-hung wood sash. There are two end corbelled chimneys.
115. C 2428 Cherry Street c. 1920
A one-story, clapboard, three-bay, bungalow, facing east, with an asphalt-covered gable roof. A gable roof extends over the corner porch on the right which is supported by square posts on a clapboard wall which encloses the porch. There are three bays: a pair of two-over-two double-hung wood windows; a single-leaf two-over-two double-hung wood window and a single-leaf louvered wood door.
116. C 2432 Cherry Street c. 1900, alterations c. 1970s
A two-story, clapboard, four-bay, residence, facing east, with an asphalt-covered hip roof with a cross gable. Originally there was a small one-story stoop. Between 1907 and 1913 the porch was enlarged to a one-story L-shape. The porch was changed to its current size in the 1970s. The two-story gallery has a shed roof supported by two-story paneled columns. There are brackets at the cornice. There are four bays: double-leaf, paneled doors with transoms, pilasters and entablature; four, floor-length, two-over-two, double-hung windows with bracketed heads; and a three-part bay window with one-over-two, double-hung sash.
117. C 2433 Cherry Street c. 1880, alterations 1913-1925
A two-story, vinyl over clapboard residence, facing west, with an asphalt-covered hip roof with a gable over a two-story, three-sided bay window. There are fish-scale shingles in the gable end. A central stuccoed chimney pierces the roof. There is a full-width, one-story, front porch with a flat roof supported by square stuccoed columns on a low stuccoed wall. The porch is screened. Originally this porch was a semi-circular one on the right. Between 1913 and 1925 the porch was changed to full-width and the more Craftsman-type supports were added. There are three bays: three two-over-two, double-hung windows in the bay and a single-leaf, glazed door with fluted pilasters and a transom and a two-over-two, double-hung window.
118. C 2501 Cherry Street c. 1917 Italian Renaissance
A two-story, stuccoed Italian Renaissance residence, facing west with a tiled hip roof. There are four stuccoed end chimneys. The portico has a hip roof supported by stuccoed columns. There are narrow wrought iron balconies under each bay on the second floor. A one-story porch with a hip roof is located on either side of the house. The left porch is screened, the right has been sensitively glassed-in. There are three bays: two pair of twelve-over-one, double-hung windows; and a glazed single-leaf door with multi-light transom and sidelights.

**United States Department of the Interior
National Park Service**

**NATIONAL REGISTER OF HISTORIC PLACES
CONTINUATION SHEET**

Section: 7

Page: 27

South Cherry Street Historic District
Vicksburg, Warren County, Mississippi

-
119. C 2506 Cherry Street c. 1886, alterations c. 1913-1925
A two-story, clapboard residence, facing east, with an asbestos-covered gable roof with cross gables. There is a corbelled brick offset chimney. The original porch was a small, probably Queen Anne ornamented one. Sometime between 1913 and 1925 the porch was remodeled to the updated Neoclassical style. The existing one-story, L-shaped front porch has a flat roof which is supported by paired Ionic columns on stuccoed brick piers. The frieze is denticulated. The gable end has imbricated shingles and a two-part stained glass window. There are four bays: a two-part two-over-two, double-hung window; a single-leaf paneled door with transom, pilasters and entablature; and two floor-length, two-over-two, double-hung sash with shutters.
120. C 2512 Cherry Street c. 1900, alterations 1907-1913
A one-story, clapboard cottage, facing east, with an asphalt-covered gable roof with cross gable. There is a corbelled brick offset chimney. The L-shaped front porch has a flat roof supported by square wooden columns linked by a plain wood balustrade. Originally the porch was an L-shape on the right corner and between 1907 and 1913 the porch was enlarged to the present size. There are four bays. A three-sided bay with one-over-one, double-hung wood windows and a single-leaf paneled door with transom.
- 121A. C 2520 Cherry Street c. 1900, 1907-1913, 1925 Queen Anne/Colonial Revival
A two-story, clapboard, Queen Anne/Colonial Revival residence, facing east, with asbestos-covered hip roof with a cross gable with a four-light arched window in the gable end. The one-story wrap-around front porch has a shed roof supported by corbelled brick columns. The porch is screened on the right side. A porch on the second floor has been enclosed with windows. Originally the porch was two-tiered at the entry and one-story on the right corner. Between 1907 and 1913 the one-story L-porch was added on the left. The second story porch was extended over the first floor on the right. By 1925 the current configuration of the porch was completed. The brick supports may also have been added at this time. There is a square tower, with a flat roof with two one-over-one, double-hung windows, located in the center. There are five bays: a single-leaf glazed door with sidelights and transom; a three-part bay with a two-over-two double-hung window flanked by two, one-over-one, double-hung sash and a one-over-one double-hung wood-framed sash.
- 121B. C Garage. c. 1910
A two-story clapboard garage, covered with an asphalt gable roof, with residential space on the second floor.
122. C 2525 Cherry Street c. 1880, addition 2002 Queen Anne
A one-story, clapboard Queen Anne, facing west, with an asphalt-covered gable roof with a cross gable over a projecting bay. This gable end faces front and has fishscale shingles and a spindled bracket in the peak of the gable. The full-width, front porch is L-shaped and has a flat roof supported by square tapered columns on a new brick wall. It is screened on the side. There are three bays: two floor-length, two-over-two, double-hung windows; and a glazed single-leaf door. A rear addition, sympathetic to the historic character of the original building was constructed in 2002. Tradition holds that the building was originally built on the southeast corner of Cherry and DeWitt Street and was moved to its present location in 1910.

**United States Department of the Interior
National Park Service**

**NATIONAL REGISTER OF HISTORIC PLACES
CONTINUATION SHEET**

Section: 7 Page: 28

South Cherry Street Historic District
Vicksburg, Warren County, Mississippi

COWAN PLACE

123. C 1 Cowan Place c. 1909 Tudor Revival
A two-story, brick and half-timbered, four-bay, Tudor Revival residence, facing west, with a tile-covered cross-gable roof with exposed rafter ends. There are two offset corbelled brick chimneys. There is a gabled dormer with widely overhanging eaves. A gable projecting room is half-timbered. There are four bays: glazed double-leaf doors with sidelights and transom and one-over-one leaded double-hung wood sash.

DEWITT STREET

124. C 1311 Dewitt Street c. 1900
A two-story asbestos-covered residence, facing south, with an asphalt hip roof pierced by a stuccoed end chimney. There is a one-story porch on the left of the facade, covered with a flat roof enhanced with rafter ends and a plain balustrade. There are four bays: two two-over-two double-hung wood windows, a single-leaf paneled door and a four-light fixed sash next to the door.

DRUMMOND STREET

125. NC 2009 Drummond Street c. 1970
A one-story metal and brick commercial building, facing south, with a flat roof and a series of plate glass windows across the facade.
126. C (?) Drummond Street c. 1890 shotgun
A one-story clapboard shotgun residence with a metal-covered hip roof with a full-width front porch recessed under the main roof supported by square posts. There are two bays: a two-over-two double-hung wood-framed sash and a single-leaf paneled door.
127. NC 2111 Drummond Street c. 1970
A one-story brick commercial building, facing west, with a flat roof.
- 128A. C 2215 Drummond Street c. 1906
A one-story, flush board-covered residence, facing west, with a pressed metal hip roof with a cross gable at the center front. There are two offset brick chimneys. The full-width, front porch has been enclosed except in the center. The fenestration is new except for a single leaf, glazed door with sidelights and a pair of double-hung two-over-two sash.

**United States Department of the Interior
National Park Service**

**NATIONAL REGISTER OF HISTORIC PLACES
CONTINUATION SHEET**

Section: 7

Page: 29

South Cherry Street Historic District
Vicksburg, Warren County, Mississippi

- 128B. C Garage apartment. c. 1920
A one-story flush-sided garage with a metal-covered gable roof. The garage was converted into an apartment in the 1990s. The entrance faces south and is a single-leaf glazed door.
129. C 2218 Drummond Street c. 1905 bungalow
A one-story, clapboard bungalow, facing east, with an asphalt-covered gable roof. The full-width front porch is recessed under the main roof and is supported by tapered square wood columns on brick piers. The porch has been screened. There are two bays: a single-leaf glazed door with sidelights; and a pair of double-hung, two-over-two wood sash.
130. C 2224 Drummond Street c. 1905 bungalow
A one-story, clapboard bungalow, facing east, with an asbestos-covered gable roof. The full-width front porch is recessed under the main roof and is supported by a pair of short square wood columns on tall brick piers. There are two bays: a glazed, single-leaf door with sidelights; and a pair of French doors.
- 131A. C 2225 Drummond Street c. 1880 Queen Anne
A two-story, clapboard Queen Anne residence, facing west, with an asbestos-covered hip roof with a cross gable over a projecting bay that is enhanced with boxed returns. There is a central brick chimney and an end brick chimney. A one-story three-sided bay window projects on the left and has a hip roof with a denticulated cornice. The two-tiered porch is supported by turned posts. A spindle frieze, jigsawn brackets and an Eastlake-type balustrade complete the porch. There are three bays: a three-part bay with one-over-one, double-hung wood sash; double-leaf, glazed doors with a transom, bracketed entablature and pilasters; and a floor-length, two-over-two, double-hung wood window.
- 131B. C Garage. c. 2003
A two-story brick and clapboard garage with an asphalt gable roof.
132. C 2226 Drummond Street c. 1905 bungalow
A one-story, clapboard bungalow, facing east, with an asphalt-covered gable roof. The full-width front porch is recessed under the main roof and is supported with square posts on brick piers. The porch has been half enclosed and half screened. There are two bays: a new window in the enclosed section and a single-leaf, glazed door.
133. C 2229 Drummond Street c. 1930 bungalow
A one-story, brick, three-bay bungalow, facing west, with a multi-gabled, asphalt-covered roof. There is a brick end chimney. The porch is enclosed and has a gable roof supported by brick piers. There are three bays: a pair of six-over-six double-hung wood windows, a single-leaf paneled door, and a six-over-six double-hung wood window.

**United States Department of the Interior
National Park Service**

**NATIONAL REGISTER OF HISTORIC PLACES
CONTINUATION SHEET**

Section: 7 Page: 30

South Cherry Street Historic District
Vicksburg, Warren County, Mississippi

-
134. C 2234 Drummond Street c. 1885 Victorian vernacular
A two-story, clapboard Victorian vernacular residence, facing east, with an asphalt-covered hip roof with a cross gable over a three-sided bay. The gable end of this bay has imbricated shingles and jigsawn brackets. The two-tiered, L-shaped porch is supported by chamfered posts. There are four bays: a pair of single-leaf glazed doors with a single-light transom and three two-over-two double-hung sash in the three-sided bay.
135. C 2300 Drummond Street c. 1890 Queen Anne
A two-story, clapboard four-bay Queen Anne residence, facing east, with a slate-covered hip roof with two shed-covered dormer windows and a hipped dormer window. There is a two-story tower with a conical roof topped with a weathervane. The tower is decorated with imbricated and fishscale shingles; a cornice with brackets; and a six-over-six, double-hung window with a pedimented head and applied ornamentation. The L-shaped porch has a complex roof line supported by Eastlake-type posts. A spindle frieze and Eastlake balustrade complete the porch. There are four bays: a three-part bay window with three one-over-one double-hung wood windows capped with a flat roof topped by a plain balustrade; double-leaf, glazed doors; a floor-length, one-over-one, double-hung wood window; and a bay window with two one-over-one, double-hung wood sash.
- 136A. C 2301 Drummond Street c. 1910 American Foursquare
A two-story, clapboard American Foursquare, facing west, with an asphalt-covered hip roof pierced by a gabled vent. The one-story, full-width porch has a flat roof supported by Doric columns resting on brick piers. There is a heavy balustrade on the roof of the porch. There is a heavy balustrade on the roof of the porch. There is a corbelled brick end chimney. There are three bays: a single-leaf glazed door with transom and two one-over-one double-hung wood sash.
- 136B. C Shed. c. 1910
A one-story clapboard utility shed.
137. C 2303 Drummond Street c. 1910 American Foursquare
A two-story, asbestos-covered American Foursquare, facing west, with a pressed-metal hip roof with a gabled vent in the center. The one-story, full-width porch is screened and has a flat roof supported by Doric columns resting on brick piers. There is a heavy balustrade on the roof of the porch. There is a corbelled brick end chimney. There are three bays: a single-leaf glazed door with transom and two one-over-one, double-hung sash.

**United States Department of the Interior
National Park Service**

**NATIONAL REGISTER OF HISTORIC PLACES
CONTINUATION SHEET**

Section: 7 Page: 31 South Cherry Street Historic District
Vicksburg, Warren County, Mississippi

138. C 2308 Drummond Street c. 1896 Queen Anne
A two-story, asbestos-covered four-bay, Free Classic Queen Anne residence, facing east, with an asbestos-covered hip roof with a cross gable. There is a corbelled brick end chimney and an offset chimney. There is an octagonal tower on the right side covered by a hip roof topped with a finial. The top third of the tower is covered with shingles and there are two one-light fixed sashes. The end of the cross gable has shingles and a Palladian window. The full-width front porch is covered by a hip roof supported by Doric columns on paneled bases. A small porch above the entrance is covered by a hip roof supported by Doric columns resting on a clapboard wall. There are four bays: two single-leaf, glazed doors; a pair of one-over-one double-hung wood sashes; and a two-part bay with one-over-one double-hung wood windows.
- 139A. C 2309 Drummond Street c. 1910 American Foursquare
A two-story, clapboard American Foursquare, facing west, with an asbestos-covered hip roof pierced by a hipped vent. There is a corbelled brick offset chimney. The one-story porch has a hip roof supported by Doric columns on brick piers. There are three bays: a single-leaf glazed door with sidelights and a transom; and two six-over-one double-hung sash.
- 139B. C Garage. c. 1910
A one-story clapboard garage with an asphalt gable roof.
- 140A. C 2310 Drummond Street c. 1920 Spanish Revival
A one-story, stuccoed three-bay Spanish Revival residence, facing east, with a tiled hip roof. There is a stuccoed end chimney. The porch on the right of the facade has a hip roof supported by stuccoed piers. A low stuccoed wall completes the porch. There are three bays: a series of multi-light casement windows; a glazed, single-leaf door with sidelights and transom; and a series of multi-light casement windows.
- 140B. C Garage. c. 1920
A one-story two-car clapboard garage with an asphalt gable roof.
141. C 2311 Drummond Street c. 1910 American Foursquare
A two-story, brick American Foursquare, facing west, with an asbestos-covered hip roof with a hipped dormer which has a pair of multi-light fixed sash. There is a corbelled brick offset chimney. The one-story full-width porch has a hip roof supported by a pair of Doric columns in the center and square brick columns on the ends. There are three bays: a single-leaf glazed door with sidelights and transom and two six-over-one double-hung sash. To the left of the building is a one-story porte-cochere covered with a flat roof supported by brick columns and topped with a balustrade similar to that on the porch.

**United States Department of the Interior
National Park Service**

**NATIONAL REGISTER OF HISTORIC PLACES
CONTINUATION SHEET**

Section: 7

Page: 32

South Cherry Street Historic District
Vicksburg, Warren County, Mississippi

-
142. C 2322 Drummond Street c. 1883 Queen Anne
A two-story, clapboard Queen Anne residence, facing east, with a pressed-metal hip roof with a cross gable over a three-sided bay. The end of the bay is decorated with fishscale shingles and an arched vent. There is an offset brick chimney. The one-story L-shaped porch has a flat roof supported by chamfered posts. There are five bays: four two-over-two double-hung wood sash and glazed double-leaf doors with pilasters and an entablature. A new (2000) picket fence encloses the property.
143. C 2323 Drummond Street c. 1870, additions c. 1907-1913
A one-story, clapboard eclectic residence, facing west, with an asbestos-covered gable roof with a cross gable. There is an offset brick chimney. The porch is to the right and has a flat roof supported by stylized Doric columns. There is a jigsawn balustrade. There are four bays: a three-part bay which projects from the wall with a flat roof and bracketed cornice with one-over-one double-hung sash; two two-over-two double-hung windows; and a single-leaf, paneled door with transom. Tradition holds that this was the residence of the caretaker for Lonewood Plantation located from 1848 to 1936 across the street. This cottage was enlarged from a two or three-room dwelling to the existing size between 1907 and 1913. The residence most likely began half the size of the existing building with a corner porch on the right. Between 1907 and 1913 the right side was enlarged to the property line and the porch was extended across this facade. A three-sided bay window was added on the left side toward the rear and on the front.
144. NC 2401 Drummond Street c. 1900 Queen Anne
A two-story, vinyl-covered two-bay Queen Anne residence, facing west, with a metal-covered gable roof with a cross gable. There is a small stoop with a gable roof supported by Doric columns. There are two bays: a pair of six-over-six double-hung sash; and double-leaf, paneled doors. The addition of the vinyl siding with subsequent removal of ornament and addition of vinyl trim and shutters has resulted in loss of integrity.
- 145A. C 2407 Drummond Street c. 1885 Queen Anne
A one-story, clapboard Queen Anne cottage, facing west, with an asbestos-covered steep gable roof with a cross gable over a projecting bay. The roof is pierced by a brick end chimney and a gabled dormer with a two-over-two wood sash. The porch has a flat roof supported by turned posts. A spindled frieze, jigsawn brackets and balustrade have been removed from the porch. There is a rectangular vent and jigsawn ornamentation with a finial in the gable end. The roof and dormer window feature cresting. There are five bays: two floor-length two-over-two, double-hung sash; two two-over-two double-hung windows; and single-leaf paneled door with sidelights and transom. Original shutters flank the windows.
- 145B. C Garage. c. 1920
A one-story, one-car clapboard garage with an asphalt gable roof.

**United States Department of the Interior
National Park Service**

**NATIONAL REGISTER OF HISTORIC PLACES
CONTINUATION SHEET**

Section: 7

Page: 33

South Cherry Street Historic District
Vicksburg, Warren County, Mississippi

-
146. C 2408 Drummond Street c. 1848
Finney-Compton Plantation Office
A two-story, brick residence, facing east, with an asphalt-covered gable roof. There are two corbelled brick end chimneys and one in the center. The two-tiered porch is supported by Doric columns on both tiers and the first tier has a jigsawn balustrade while the second tier balustrade is simple. There are four bays: two single-leaf paneled doors and two, six-over-six double-hung wood windows. This building was originally the office for the Finney Plantation. The Finney house sat in front of this building until the 1930s when it was demolished except for one room, the library.
147. C 2411 Drummond Street c. 1885 Queen Anne
A one-story, asbestos-covered Queen Anne cottage, facing west, with an asbestos-covered hip roof with a cross gable to the front. The porch has a hip roof supported by turned posts. There are four bays: two floor-length, two-over-two, double-hung wood windows; a single-leaf glazed door with sidelights and a three-light transom and a one-over-one double-hung wood window.
148. C 2414 Drummond Street c. 1935
A two-story, brick apartment building, facing east, with a slate-covered gable roof. There are five bays: two eight-over-eight, double-hung windows; a single-leaf paneled door with fanlights and Doric pilasters; and two three-part sashes with a six-over-six double-hung window flanked by four-over-four windows.
- 149A. C 2415 Drummond Street c. 1885 Victorian vernacular
A two-story, clapboard house, facing west, with an asphalt-covered hip roof. A cross gable breaks the cornice at the front and has fishscale shingles and boxed returns. There is a stuccoed offset chimney. The one-story full-width porch has a hip roof supported by large stuccoed columns. The porch originally had a two-story section on the left corner. There are three bays: two floor-length, two-over-two, double-hung windows; and a single-leaf, glazed door with a transom, pilasters and an entablature.
- 149B. C Garage. c. 1910
A one-story, one-car clapboard garage with an asphalt gable roof.
150. C 2416 Drummond Street c. 1848, alterations c. 1935
Finney-Compton Plantation Library (Caroline Compton Studio)
A one-story, brick residence, facing south, with an asphalt-covered hip roof. Wooden steps with a spindle rail provide access to the entrance. There are three bays: two six-over-six double-hung wood windows which are shuttered and a single-leaf paneled door with a transom. This building was originally a part of the Finney Plantation home, built in 1848, and demolished (except for this part) in the 1930s.

**United States Department of the Interior
National Park Service**

**NATIONAL REGISTER OF HISTORIC PLACES
CONTINUATION SHEET**

Section:

7

Page: 34

South Cherry Street Historic District
Vicksburg, Warren County, Mississippi

-
- 151A. C 2418 Drummond Street c. 1895, alterations c. 1925 Queen Anne
A two-story, clapboard two-bay, Queen Anne residence, facing east, with a slate-covered hip roof with cross gables. There are two offset corbelled chimneys. There is an L-shaped, one-story porch with a shed roof supported by brick columns resting on a low brick wall. The original wrap-around porch was enclosed on the right side and modified sometime after 1925. There are fishscale shingles and an arched vent in the gable end. There are two bays: double-leaf glazed doors with transom; and a two-over-two, double-hung wood window.
- 151B. C Apartment. c. 1920
A two-story clapboard residence with an asphalt gable roof.
152. C 2419 Drummond Street c. 1895, alterations 1907-1913, 1920
A two-story, stucco-over-clapboard vernacular residence, facing west, with an asphalt-covered hip roof pierced by a gabled vent enhanced by incised sunbursts. There is a one-story, L-shaped porch with a hip roof supported by fluted Doric columns on a low stuccoed wall. This porch was originally full-width and was changed some time between 1907 and 1913. There is a porte-cochere, added about 1920, with a gable roof supported by fluted Doric columns on stuccoed piers. There are three bays: a single-leaf glazed door with a transom, pilasters and an entablature; and two French doors with transoms.
153. C 2421 Drummond Street c. 1895, alterations 1907-1913 Queen Anne
A one-story, clapboard Queen Anne cottage, facing west, with an asbestos-covered gable roof with a cross gable. The gable end has imbricated shingles, a jigsawn vent, and a denticulated frieze. A slightly projecting bay extends from the wall of a projecting room and is covered by a flat roof enhanced with a denticulated frieze. There are three, double-hung leaded multi-light-over-one sash in this bay. The porch is covered by a flat roof supported by six Doric columns on a formed concrete block wall. The two center columns are set to the front of the porch to allow access to the porch which is screened. The porch originally was straight, the projection was added between 1907 and 1913. There are four bays: a single-leaf paneled door with transom; two two-over-two, double-hung wood windows; and the three-part bay.
- 154A. NC 2427 Drummond Street c. 1895 Queen Anne
A one-story, Queen Anne cottage, facing west, which has been re-sided with brick. The asphalt-covered gable roof is interrupted by a cross gable over a projecting room. This residence lacks integrity because of the addition of the new brick and changes to the porch.
- 154B. C Garage. c. 1920
A one-story, one-car clapboard garage with an asphalt gable roof.

**United States Department of the Interior
National Park Service**

**NATIONAL REGISTER OF HISTORIC PLACES
CONTINUATION SHEET**

Section:

7

Page: 35

South Cherry Street Historic District
Vicksburg, Warren County, Mississippi

155. C 2429 Drummond Street c. 1885, alterations 1907-1913 Queen Anne

A one-story, clapboard Queen Anne cottage, facing west, with an asbestos-covered hip roof with cross gables. There is a corbelled brick end chimney. The porch, set to the right of a projecting bay is covered by a flat roof supported by four turned posts with brackets. The gable end to the front has sawtooth shingles and a round vent. Originally the house was one less bay with a full-width front porch. Between 1907 and 1913 the bay on the left was added, but the porch remained the same. There are four bays: a pair of leaded fixed sash; a single-leaf glazed door with sidelights and a five-light transom; and two floor-length, two-over-two, double-hung sash with shutters.

- 156A. PL 2430 Drummond Street c. 1910 Mission
Fannie Willis-Johnson Home

A two-story, yellow brick Mission Revival residence, facing east, surmounted by an asphalt-covered hipped roof with widely-overhanging bracketed eaves. The roof is pierced by hipped dormers lighting the attic story and by four chimneys, two of which flank the ridge of the hipped roof and of the main block. A one-story sun porch with a front terrace extends from the southern elevation and is repeated on the northern elevation by a one-story open porch with a front terrace. The roof eave of the open porch extends to form a porte-cochere. The easterly facade of the central block is essentially a three-bay composition of center-bay porch projections flanked by large window units filled with triple lights. Two secondary entrances flank the main entrance on the first-story level but are obscured by the projecting entrance porch with a Mission-shaped parapet. The first-story entrance porch extends on both sides to form a full-width porch with brick supporting piers linked by a low brick porch wall. The first-story entrance porch is echoed on the second story by a narrower porch projection with a Mission-shaped parapet adorned with a quatrefoil motif typical of Mission style architecture. Both the first and second-story porch projections feature columns set in antis with supporting wall piers. A first-story arched opening is supported by paired Tuscan columns sharing a single capital with sculptural decoration, and the second-story rectangular opening is supported by a single octagonal column beside each brick pier. Sandstone is used extensively in columns, column capitals, lintels, coping, and applied decoration, and the front porch floor is finished in decorative ceramic tile. The main entrance doorway is recessed to form an entrance loggia with porch seats. A single-leaf, glazed door is flanked by large stained and leaded glass sidelights, with door and sidelights set beneath similar stained glass transoms. Flanking secondary entrances are recessed and filled with single-leaf glazed doors set beneath stained glass transoms. The triple units of the first-story facade consists of one-over-one, double-hung sash flanked by fixed, stained glass windows. The triple units of the second-story facade are all filled with stained glass in moveable sash. An original wrought-iron fence in a scroll pattern separates the yard of the house from the sidewalk along Drummond Street and from a driveway along the southern property line. A semi-circular front driveway and a driveway along the northern property line appear also to be original features of the property.

- 156B. PL Carriage House c. 1910

A one-story brick building on a fully raised basement with a gabled roof, central chimney, four-bay facade, and attached shed-roof porch.

**United States Department of the Interior
National Park Service**

**NATIONAL REGISTER OF HISTORIC PLACES
CONTINUATION SHEET**

Section: 7 Page: 36 South Cherry Street Historic District
Vicksburg, Warren County, Mississippi

157. C 2435 Drummond Street c. 1885 Queen Anne
A one-story, clapboard Queen Anne cottage, facing west, with an asphalt-covered hip roof with a cross gable over a projecting bay. There is a jigsawn vent in the gable end. There is a stuccoed end chimney. The porch has a flat roof supported by Doric columns. There are four bays: a pair of nine-over-one, double-hung wood sash in the bay; a single-leaf, paneled door with sidelights and transom; and a pair of floor-length, two-over-two, double-hung wood sash with shutters.
158. C 2501 Drummond Street c. 1890, alterations 1907-1913 Queen Anne
A one-story, clapboard Queen Anne residence, facing west, with an asphalt-covered hip roof with a cross gable with imbricated shingles in the gable end. The original porch was enlarged to a full-width front gallery with a flat roof supported by three tapered brick columns between 1907 and 1913. There is a spindle balustrade. There are two bays: a single-leaf, glazed door with sidelights and transom; and a pair of two-over-two, double-hung wood sash.
159. C 2502 Drummond Street c. 1895 Queen Anne
A one-story, clapboard Queen Anne residence, facing east, with an asphalt-covered gable roof with a cross gable over a projecting bay. There are fishscale shingles and an arched vent in the gable end. There is an offset chimney and an end corbelled chimney. The porch to the right of the bay has a flat roof supported by turned posts. There are three bays: a pair of two-over-two double-hung sash which project from the wall and are covered by a slight bracketed shed roof; a pair of floor-length, two-over-two, double-hung wood windows; and double-leaf, glazed doors with a transom.
160. C 2504 Drummond Street c. 1890 Queen Anne
A two-story, clapboard Queen Anne residence, facing east, with a slate-covered hip roof with cross gables. There is a corbelled brick offset chimney. The porch is screened on the first floor and is set to the right of a three-part bay window and is covered with a flat roof supported by two turned posts. A spindle frieze, brackets and balustrade complete the porch. Above this porch is a smaller porch with a flat roof supported by two turned posts. There is a spindle frieze and balustrade. The bay window on the left is three-sided with three one-over-one, double-hung sash. The bay has a hip roof topped with cresting. Above this bay is a pair of one-over-one double-hung windows covered by a bell-cast hip roof with a spindle frieze supported by jigsawn brackets. Above this bay, in the gable end, is a two-light window with decorative molding and imbricated shingles. There is a single-leaf glazed door with transom.
- 161A. C 2505 Drummond Street c. 1896 Victorian vernacular
A one-story, clapboard Victorian vernacular residence, facing west, with an asbestos-covered gable roof with two offset corbelled brick chimneys. There is a gabled dormer with a Palladian window and sawtooth shingles. The full-width front porch has a flat roof supported by Doric columns. It appears that the porch was originally

**United States Department of the Interior
National Park Service**

**NATIONAL REGISTER OF HISTORIC PLACES
CONTINUATION SHEET**

Section: 7

Page: 37

South Cherry Street Historic District
Vicksburg, Warren County, Mississippi

supported with turned posts with brackets, as one remains as a pilaster. There are five bays: four floor-length, one-over-one double-hung wood windows and a single-leaf, leaded door with sidelights and a fanlight.

- 161B. C Shed. c. 1900
A one-story clapboard shed with an asphalt gable roof.
162. C 2506 Drummond Street c. 1930
A one-story, brick cottage, facing east, with an asphalt-covered gable roof with a cross gable over a projecting room. There is an offset brick chimney. The porch to the right of the bay has a flat roof supported by square posts. There are three bays: three six-over-six double-hung wood sash. The entrance is into the side of the bay and is a single-leaf glazed wood door.
- 163A. C 2511 Drummond Street c. 1896 Queen Anne
A one-story, clapboard Queen Anne residence, facing west, with a pressed-metal hip roof with cross gables. There is a corbelled brick end chimney. The porch to the side of a projecting bay is covered with a flat roof supported by square posts and decorated with a spindle frieze and jigsawn brackets. There are six bays: two floor-length, two-over-two double-hung wood windows; a glazed, single-leaf door with a transom, pilasters and an entablature; and a three-part bay with one floor-length, two-over-two, double-hung wood window and two, two-over-two, double-hung wood sash.
- 163B. C Garage (originally a stable) c. 1900
A one-story, one-car clapboard garage with an asphalt gable roof.
- 164A. C 2515 Drummond Street c. 1896 Queen Anne
A two-story, clapboard Queen Anne cottage, facing west, with an asphalt-covered hip roof with a cross gable. There are imbricated shingles and an arched vent in the gable end. There are two stuccoed offset chimneys. The corner porch has a flat roof supported by square stuccoed columns. There are two bays: a single-leaf glazed door with a transom and a pair of two-over-two double-hung wood windows.
- 164B. C Garage. c. 1920
A one and a half story, two-car clapboard garage with an asphalt gable roof with cross gable roofs. There is an apartment in the attic space. There is a one-over-one double-hung wood-frame sash in the gable end.
165. NC 2518 Drummond Street c. 1970
A three-story, modern brick apartment complex, facing east.

**United States Department of the Interior
National Park Service**

**NATIONAL REGISTER OF HISTORIC PLACES
CONTINUATION SHEET**

Section: 7

Page: 38

South Cherry Street Historic District
Vicksburg, Warren County, Mississippi

-
- 166A. C 2521 Drummond Street c. 1880, alterations 1907-1911 Queen Anne
A two-story, clapboard Queen Anne/Colonial Revival residence, facing west, with a slate-covered hip roof and a cross gable over a projecting three-sided two-story bay. Originally a Queen Anne porch wrapped around the bay window. This porch was removed when the house was moved from across the street between 1907 and 1911 and the Colonial Revival porch was added. There are two corbelled, brick, end chimneys. The full-width front gallery has a flat roof supported by Doric columns and the cornice is denticulated. There are four bays: two floor length, one-over-one, double-hung wood windows with shutters; double-leaf paneled doors with a transom and pilasters; and a three-sided bay window with one-over-one sash. There is a single-leaf glazed door on the second floor with an arched transom and sidelights.
- 166B. C Garage. c. 1910
A one-and-a-half story two-car clapboard garage with an asphalt gable roof and a two-over-two double-hung wood-framed sash in the gable end.
167. C 2601 Drummond Street c. 1905 Bungalow
A one-story, clapboard bungalow, facing west, with an asphalt-covered hip roof with exposed rafter ends and a cross gable with a pointed arch vent. The porch is covered by a flat roof supported by cast concrete block columns resting on a cast concrete block wall. There are five bays: two, two-over-two, floor-length, double-hung wood sash; two single-leaf glazed doors with transoms; and a two-over-two double-hung wood sash.
- 168A. C 2602 Drummond Street c. 1910
A two-story, clapboard residence, facing east, with an asphalt-covered gable roof pierced by two gabled dormers with vents. There is a stoop covered by a gable roof supported by a wrought iron post and a square brick column. There are two bays: an eight-over-one double-hung window and a single-leaf glazed door with a transom and sidelights.
- 168B. C Garage c. 1950
A one-story clapboard garage.
169. C 2603 Drummond Street c. 1905
A two-story, clapboard three-bay residence, facing west, with a standing seam metal, hip roof pierced by an offset brick chimney. The two-tiered, full-width, front porch is covered by a hip roof supported by square posts. There is a simple balustrade on the second tier. There are three bays: two six-over-six, double-hung windows and a single-leaf contemporary door.

**United States Department of the Interior
National Park Service**

**NATIONAL REGISTER OF HISTORIC PLACES
CONTINUATION SHEET**

Section: 7 Page: 39

South Cherry Street Historic District
Vicksburg, Warren County, Mississippi

-
170. C 2604 Drummond Street c. 1920
A one-story, brick bungalow, facing east, with a low asbestos hip roof with a cross gable at the front over an L-shaped porch. The porch roof is supported by large battered brick piers on a low brick wall. There are exposed rafter ends. The porch is glassed-in on the right. There is an offset brick chimney. There are three bays: two multi-light-over-one double-hung wood windows; and a single-leaf paneled door.
171. C 2605 Drummond Street c. 1920
A one-and-a-half story, clapboard five-bay residence, facing west, with an asbestos-covered gable roof. There is a large three-bay dormer covered with a shed roof. There is a brick end chimney. The one-story porch is recessed under the main roof and is supported by six wooden Doric columns. There are five bays: four multi-light-over-one, double-hung wood windows; and a glazed single-leaf door.
172. C 2608 Drummond Street c. 1910
A one-story brick, five-bay residence, facing east, with an asphalt-covered hip roof. The corners are enhanced by wooden quoins. The full-width L-shaped front porch has an asphalt-covered hip roof supported by square wooden columns that resemble quoins. There is a hipped dormer with a three-light sash. There are two tall end brick chimneys. There are five bays: four one-over-one double-hung wood-framed sash and a single-leaf, glazed door with sidelights and transom.
173. C 2609 Drummond Street c. 1920
A one-and-a-half story, clapboard residence, facing west, with an asbestos-covered gable roof. There is a large three-bay dormer covered with a shed roof. There is a brick end chimney. The one-story porch is recessed under the main roof and is supported by six wooden Doric columns. There are five bays: four multi-light-over-one, double-hung wood-framed sash and a glazed single-leaf door.

FINNEY STREET

174. C 1210 Finney Street c. 1900 Queen Anne
A two-story, clapboard Queen Anne residence, facing north, with an asphalt-covered hip roof with a hip roof over a three-sided bay. The two-tiered, L-shaped porch has a flat roof supported by turned posts with jigsaw brackets. A low clapboard wall completes the second floor and a low lattice wall completes the first floor porch. There are five bays: two, two-over-two floor-length wood-framed sash; and a three-part bay with a two-over-two double-hung wood-framed sash flanked by one-over-one, double-hung windows. The entrance is into the side of the bay and is a single-leaf, glazed door with a transom.

**United States Department of the Interior
National Park Service**

**NATIONAL REGISTER OF HISTORIC PLACES
CONTINUATION SHEET**

Section: 7

Page: 40

South Cherry Street Historic District
Vicksburg, Warren County, Mississippi

-
175. C 1214 Finney Street c. 1900 Queen Anne
A two-story, asbestos-covered Queen Anne residence, facing north, with an asbestos-covered hip roof with a cross gable over a projecting bay. The bay has a two-over-two double-hung window flanked by one-over-one sashes. The one-story porch to the left of the bay has been enclosed. It has a hip roof. There is a non-historic door.

HARRIS STREET

176. C 1203 Harris Street c. 1878, alterations 1913-1925 Italianate
A two-story, clapboard Italianate residence, facing south, with a slate gable roof with cross gables. There is a stuccoed end chimney. The cornice has paired brackets with drop pendants and applied ornamentation. The one-story porch to the right of a projecting bay window was changed in the 1920s and is now supported by square stuccoed columns and is enclosed by a low stuccoed wall. There are four bays: a three-part bay with one-over-one double-hung sash with a flat roof decorated with brackets and pendants and topped with a balustrade; a single-leaf paneled door with sidelights and a fanlight with a decorative entablature; and two floor-length, two-over-four, double-hung sash. This house was moved from the lot just to the east and it faced Cherry Street. The move took place some time between 1913 and 1925.
177. C 1210 Harris Street c. 1920 American Foursquare
A two-story, stuccoed, three-bay American Foursquare, facing north, with an asbestos-covered hip roof pierced by a hipped dormer filled with a three-part vent. The one-story porch is covered by a hip roof supported by Doric columns on stuccoed piers. There are three bays: an eight-over-one double-hung window; a single-leaf, paneled door with a transom; and a set of French doors with a transom. Ca. 1920.

HARRISON STREET

178. C 1017 Harrison Street c. 1896
A one-story clapboard cottage, facing south, with an asbestos-covered hip roof with exposed rafter ends and pierced by a three-light hipped dormer. The full-width front porch is recessed under the main roof and is supported by heavy brick columns. A low brick wall completes the porch. There are three bays: a single-leaf paneled door with sidelights and transom and two two-over-two double-hung wood-framed sash.
179. C 1019 Harrison Street c. 1896
A one-story clapboard cottage, facing south, with an asphalt-covered hip roof pierced by a corbelled brick offset chimney. The full-width front porch is recessed under the main roof and is supported with square posts. The left side of the porch is enclosed with clapboard and windows. The entry is a single-leaf glazed door with sidelights and transom.

**United States Department of the Interior
National Park Service**

**NATIONAL REGISTER OF HISTORIC PLACES
CONTINUATION SHEET**

Section: 7 Page: 41 South Cherry Street Historic District
Vicksburg, Warren County, Mississippi

180. C 1105 Harrison Street c. 1850 Greek Revival
A two-story clapboard Greek Revival with a low asphalt-covered gable roof. The two-tiered full-width front porch is recessed under the main roof which is supported by two-story square paneled wooden Doric columns. There is a wide denticulated entablature. A turned rail completes the first floor of the porch. There are five bays: four full-length six-over-nine double-hung wood-framed sashes and a single-leaf paneled door with sidelights and transom. Pilasters and a plain entablature complete the entry.
181. C 1107 Harrison Street c. 1895
A one-story clapboard residence, facing south, with an asbestos-covered hip roof and a pyramidal roof over a three-sided projecting bay. There is a flat roof over the porch which sits to the east of this bay. The roof is supported by square wooden posts and the porch is enclosed with large sheets of glass. There are four bays: a pair of six-over-six double-hung wood-framed sash and two single-leaf French doors with transoms.
182. C 1111 Harrison Street c. 1895 Victorian vernacular
A one-story clapboard Victorian vernacular residence, facing south, with an asbestos-covered hip roof pierced by an eyebrow dormer and a brick end chimney. A cross gable extends over a projecting room and an arched two-light fixed sash, imbricated shingles and a dentil molding enhance the gable end. A square bay filled with a pair of leaded-over-two wood-framed double-hung sash and covered with an asbestos-covered shed roof projects from the projecting room. The porch to the east of the projecting room is recessed under the main roof and is supported by turned posts. Jigsaw brackets, an Eastlake balustrade, and a spindled frieze completes the porch. There are five bays: the pair in the projecting bay, a pair of French doors capped with a multi-light transom, two leaded-over-two floor-length double-hung wood-framed sash, and a leaded-over-leaded double-hung wood-framed sash on a canted corner enhanced with turned pilasters.
183. C 1123 Harrison Street c. 1915 American Foursquare
A two-story clapboard American Foursquare residence, facing south, topped with an asbestos-covered hip roof pierced by a hipped dormer vent and a brick end chimney. The one-story full-width porch is covered by an asbestos-covered hip roof supported by squatty Doric columns resting on brick piers. There are three bays: a single-leaf paneled door with sidelights and a transom and two floor-length six-over-one double-hung wood-framed sash.
184. C 1125 Harrison Street c. 1910
A one-story clapboard vernacular residence, facing south, with an asbestos-covered hip roof with two brick end chimneys. A large cross gable projects to cover the centered front porch. This gable is supported by four square, paneled columns resting on brick piers. There is a stylized Palladian window in the gable end. There are five bays: a multi-light casement window topped with a multi-light transom, a pair of multi-light casement windows topped with multi-light transom, a single-leaf glazed Mission-styled door, two two-over-two double-hung wood-framed sash.

**United States Department of the Interior
National Park Service**

**NATIONAL REGISTER OF HISTORIC PLACES
CONTINUATION SHEET**

Section: 7

Page: 42

South Cherry Street Historic District
Vicksburg, Warren County, Mississippi

-
185. C 1201 Harrison Street c. 1917
A one-story clapboard vernacular residence, facing south, with an asphalt gable roof with a cross gable over the porch set to the left on the facade. The porch roof is supported with round Doric columns on brick piers. There are three bays: a pair of six-over-one double-hung wood-framed sash, a single-leaf glazed door with transom, and a six-over-one double-hung wood-framed window.
186. C 1207 Harrison Street c. 1925
A one-story clapboard vernacular residence, facing south, with an asphalt-covered gable roof with a cross gable over a projecting room. The corner porch is covered with a hip roof supported with Doric columns. There are five bays: four two-over-two double-hung wood-framed windows and a single-leaf glazed door with a transom and sidelights. There is a corbelled interior brick chimney.

MONROE STREET

187. C 1511 Monroe Street c. 1920
First Church of Christ Scientist
A one-story brick-over-clapboard church building, facing west, with an asphalt-covered gable roof with a cross gable over a projecting room. There are two bays on the facade: two multi-light arched aluminum windows. The entrance is into the south side and is covered with a flat-roofed awning supported by metal posts.
188. C 1603 Monroe Street c. 1930
A one-story stuccoed cottage, facing west, with an asphalt-covered gable roof with a cross gable over the entrance and a cross gable over a projecting room. There are five bays: a small two-light fixed sash, a pair of six-over-six double-hung wood-framed windows, an arched paneled wooden door, a single-light fixed sash beside the door, and a single-leaf paneled door with a single-light transom.
189. PL 1617 Monroe Street c. 1878
The Magnolias
A two-story, clapboard three-bay galleried townhouse, facing west, capped with a slate-covered hip roof pierced by two brick offset chimneys. The cornice is enhanced with brackets. The two-tiered porch is recessed under the main roof which is supported with pierced columns enhanced with jigsaw brackets and a pierced balustrade on the second tier. There are three bays: a single-leaf glazed door with sidelights and a transom set in an arched molded frame and two one-over-one floor-length double-hung arched wooden-frame sash.
190. NC 1625 Monroe Street c. 1970
Mississippi Employment Security Building
A one-story brick modern office building, facing west, with a flat roof.

**United States Department of the Interior
National Park Service**

**NATIONAL REGISTER OF HISTORIC PLACES
CONTINUATION SHEET**

Section: 7

Page: 43

South Cherry Street Historic District
Vicksburg, Warren County, Mississippi

-
191. C 1703 Monroe Street c. 1920
A one-story brick residential building, facing west, on a raised basement. An asphalt-covered gable roof with a cross gable to the front caps the house. There are four bays: three sets of paired four-over-one double-hung wood-frame sash set in arched openings and a single-leaf glazed door.
192. C 1705 Monroe Street c. 1920
A two-story clapboard residence, facing west, with an asphalt gable roof with a brick end chimney. There are three bays: three pair of six-over-six double-hung wood-frame sash. The entrance is in the side and is a single-leaf paneled door.

PINE STREET, WEST

193. NC 900 West Pine Street c. 1980
A one-story brick commercial building, facing north, with a flat roof and a shed awning over the entire facade.

SHANNON'S ALLEY

194. C 917 Shannon's Alley c. 1920
A one-story clapboard residence, facing north, capped with an asbestos gable roof with a cross gable. There are four bays: two five-over-two double-hung wood-frame sash, a pair of four-over-one double-hung wood-frame sash, and a pair of five-over-two double-hung wood-frame sash. The entrance is in the side and is a single-leaf glazed door.
195. NC 920 Shannon's Alley c. 1970
A one-story brick commercial building with a flat roof. The windows are plate glass and the door is a single-leaf plate glass.

SPEED STREET

196. C 1214 Speed Street c. 1880, alterations 1913-1925
A one-story clapboard residence, facing north, capped with an asphalt-covered gable roof pierced by a central brick chimney and with cross gables over three-sided bays on either side of the building (these were added between 1913 and 1925). The gable end is set to the front and is pierced with a pair of single-light wood-frame sash. The full-width front porch is covered by a shed roof supported by turned posts which are linked with a spindle balustrade. There are four bays: two floor-length two-over four double-hung wood-frame sash, a single-leaf French door, and a single-leaf glazed door with transom.

**United States Department of the Interior
National Park Service**

**NATIONAL REGISTER OF HISTORIC PLACES
CONTINUATION SHEET**

Section: 8

Page: 44

South Cherry Street Historic District
Vicksburg, Warren County, Mississippi

Statement of Significance

The South Cherry Street Historic District is locally significant in the areas of community planning and architecture (Criteria C), with the period of significance extending from 1848, the construction date of the earliest building in the district, to 1953, fifty years before this nomination. The district's significance derives from its high concentration of intact residential buildings that illustrate not only the popular architectural styles of the period between 1848 and 1953, but also a significant percentage of vernacular forms common during that time. The architectural and historic context of Vicksburg is discussed in the Multiple Property Listing documentation for the *Historic Resources of Vicksburg, Mississippi* (1992).

Represented in the district are intact examples of nearly every architectural style found in Vicksburg. These include: Greek Revival (#180), Italianate (#57), Queen Anne (#135), Shingle (#34A), Romanesque Revival (#36), Colonial Revival (#5A), Neoclassical (#30A), Tudor Gothic (#54), Tudor Revival (#68A), Mission Revival (#156A), Spanish Revival (#140A), Italian Renaissance (#118), Mediterranean (#76A), Prairie (#92A), American Foursquare (#18), Craftsman Bungalow (#6), Traditional Commercial (#49), and Ranch (#19). Also represented in the district are classic Vicksburg architectural types including the two-bay shotgun (#126), the three (#110), four (#2), and five-bay (#52) galleried cottages and the three-bay galleried townhouse (#53). The last five types are found in abundance in the older sections of Vicksburg and are represented in this district by numerous examples, making the architectural types of the district even more representative of Vicksburg's architectural heritage. These cottages maintain full-width front galleries which are generally recessed under the main roof which is usually a hip roof supported by columns or turned posts. The four-bay cottage usually has two entrances and two double-hung sash while the five-bay has four sash and a center entrance. The district also includes intact examples of period garages, carriage houses and sheds which provide additional insight into the architecture of the area.

Residences along Chambers and Baum streets were built at the turn of the century by men who had prospered in the cotton industry, mostly as cotton factors and brokers. Vicksburg during this era led the world in producing and handling long-staple cotton. Harry R. Austin built his home about 1910 (#29A) on Chambers Street. Austin was a cotton buyer and a partner of the brokerage firm of Austin and Walne. James J. Lum, a man prominent in Vicksburg business circles and owner of the J. J. Lum Co., Commission Merchants and Cotton Factors and co-owner of Lum and Oats Auto Exchange, built the house next door (#34A) in 1904. Across the street, Robert C. Colhoun, a cotton buyer for J. J. Cowan, built his house (#32A) in about 1904. Four additional homes on Chambers Street were built with "cotton money" – the Vincent house (#35) (J. D. Vincent was a partner in Knox and Vincent Cotton Buyers); the Levy house (#36) (William B. Levy was an office manager for D. J. Shlenker, Cotton Factors); 1414 Chambers (#40) (built by Edward M. Durham who was the president of the Refuge Cotton Oil Company); and 1419 (#41A) (built by Lucien W. Oates, a cotton classer for J. J. Lum). Other prominent individuals who built homes on Chambers Street were brothers Thomas (#38) and Oliver (#39A) Catchings- both men were attorneys and Thomas was elected to the United States House of Representatives, and Phillip M. Harding (#37) who was the president of Delta Trust and Banking Co.

**United States Department of the Interior
National Park Service**

**NATIONAL REGISTER OF HISTORIC PLACES
CONTINUATION SHEET**

Section: 8

Page: 45

South Cherry Street Historic District
Vicksburg, Warren County, Mississippi

The area south of Harris Street along Cherry and Drummond Streets to Bowmar Street was Lonewood Plantation until 1881 when Judge Frederic Speed and Thomas R. Foster divided the tract into lots and established the town of Speed's Addition. The Lonewood Plantation main house was demolished in the 1930s with the exception of the room that housed the library. This room was converted into a studio (#150) in the 1930s for Caroline Compton, a renowned Mississippi artist. The plantation office, a two-story building at the back of the old house site, remains and is a residence (#146). Speed's Addition was annexed by the City of Vicksburg in 1905 after promises of the addition of light, water, and other municipal services.

**United States Department of the Interior
National Park Service**

**NATIONAL REGISTER OF HISTORIC PLACES
CONTINUATION SHEET**

Section: 9

Page: 46

South Cherry Street Historic District
Vicksburg, Warren County, Mississippi

BIBLIOGRAPHY

Bell, Nancy H. Multiple Property National Register Nomination Form for the Historic Resources of Vicksburg, Mississippi.

Chapman, H. P. and J. F. Battaile. *Picturesque Vicksburg*. Vicksburg: Vicksburg Printing and Publishing Company, 1895.

City Directories for Vicksburg, Mississippi: 1866, 1877, 1886, 1895, 1904, 1906, 1911, 1924. On file with the Vicksburg Foundation for Historic Preservation (Vicksburg, MS).

Gibraltar Publishing Company. *In and About Vicksburg*, 1890. Vicksburg: Gibraltar Publishing Company.

Historic Resources Inventory, Vicksburg, Mississippi. On file with the Vicksburg Foundation for Historic Preservation (Vicksburg, MS).

O'Neill, J. Cyril. *Early Twentieth Century Vicksburg, 1900-1910*. Raymond, Mississippi: Keith Press, 1976.

Photographs, Old Court House Museum Collection, Old Court House Museum, Vicksburg, Mississippi.

Sanborn Fire Insurance Maps for Vicksburg, Mississippi: 1886, 1892, 1897, 1902, 1907, 1913, 1925. On file with the Vicksburg Foundation for Historic Preservation (Vicksburg, MS).

Vicksburg Foundation for Historic Preservation. *Historic Vicksburg Walking Tour Guide*. Vicksburg: Vicksburg Foundation for Historic Preservation, 1987.

Warren County Deed Books, Will Books, Tax Records. On file at the Warren County Courthouse (Vicksburg, MS).

**United States Department of the Interior
National Park Service**

**NATIONAL REGISTER OF HISTORIC PLACES
CONTINUATION SHEET**

Section: 10, photographs

Page: 47

South Cherry Street Historic District
Vicksburg, Warren County, Mississippi

GEOGRAPHICAL DATA

Verbal Boundary Description: See attached map of the South Cherry Street Historic District.

Boundary Justification: The district includes a group of contiguous residential and commercial buildings that represent the historic and architectural development in the South Cherry Street area of Vicksburg during the period of significance, c. 1848- 1953.

PHOTOGRAPHS

The following information is the same for all photographs:

1. South Cherry Street Historic District
2. Vicksburg, Warren County, Mississippi
3. Nancy H. Bell
4. May 2003
5. Mississippi Department of Archives and History

- | | |
|----------------|---|
| Photo 1 of 78 | View of 1202 Arthur Street facade (north), facing south |
| Photo 2 of 78 | Streetscape of the 1300 block of Baum Street (north side), facing northeast |
| Photo 3 of 78 | View of 1315 Baum Street facade (south), facing north |
| Photo 4 of 78 | View of 1317 Baum Street facade (south), facing north |
| Photo 5 of 78 | View of 1319 Baum Street facade (south), facing north |
| Photo 6 of 78 | View of 1320 and 1318 Baum Street facades (north), facing southwest |
| Photo 7 of 78 | View of 1321 Baum Street facade (south), facing north |
| Photo 8 of 78 | Streetscape of the 1300 block of Baum Street (north side), facing northwest |
| Photo 9 of 78 | View of 1400 and 1406 Baum Street facades (north), facing southeast |
| Photo 10 of 78 | View of 1401 Baum Street facade (south), facing northeast |
| Photo 11 of 78 | View of 1414 Baum Street facade (north), facing southeast |
| Photo 12 of 78 | View of 1415 Baum Street facade (south), facing northeast |

**United States Department of the Interior
National Park Service**

**NATIONAL REGISTER OF HISTORIC PLACES
CONTINUATION SHEET**

Section: 10, photographs

Page: 48

South Cherry Street Historic District
Vicksburg, Warren County, Mississippi

- Photo 13 of 78 Streetscape of Baum Street (note brick streets), view to the west
- Photo 14 of 78 View of 1315 Chambers Street facade (south), facing north
- Photo 15 of 78 Streetscape of 1300 block of Chambers Street, facing east
- Photo 16 of 78 View of 1322 Chambers Street facade (north), facing south
- Photo 17 of 78 View of 1325 Chambers Street facade (south), facing north
- Photo 18 of 78 View of 1328 Chambers Street facade (north), facing south
- Photo 19 of 78 View of 1332 Chambers Street facade (north), facing south
- Photo 20 of 78 View of 1333 Chambers Street facade (south), facing northwest
- Photo 21 of 78 View of 1337 Chambers Street facade (south), facing north
- Photo 22 of 78 View of 1402 Chambers Street facade (south), facing north
- Photo 23 of 78 View of 1403 Chambers Street facade (north), facing southeast
- Photo 24 of 78 View of 1407 Chambers Street facade (north), facing southeast
- Photo 25 of 78 View of 1414 Chambers Street facade (south), facing north
- Photo 26 of 78 View of 1420 Chambers Street facade (south), facing north
- Photo 27 of 78 Streetscape of Chambers Street, view from 1400 block looking southwest
- Photo 28 of 78 View of 1515 Cherry Street facade (west), facing east
- Photo 29 of 78 View of 1607 Cherry Street facade (west), facing east
- Photo 30 of 78 View of 1620 and 1618 Cherry Street facades (east), facing west
- Photo 31 of 78 View of 1711 and 1717 Cherry Street facades (west), facing southeast
- Photo 32 of 78 View of 1714 Cherry Street facade (east), facing west
- Photo 33 of 78 View of 1810 Cherry Street facade (east), facing west
- Photo 34 of 78 View of 1816 Cherry Street facade (east), facing west
- Photo 35 of 78 View of 1818 Cherry Street facade (east), facing west
- Photo 36 of 78 View of 1830 Cherry Street facade (east), facing west
- Photo 37 of 78 View of 1831 Cherry Street facade (west), facing east
- Photo 38 of 78 View of 1900 Cherry Street facade (east), facing west
- Photo 39 of 78 View of 1905 Cherry Street facade (west), facing northeast

**United States Department of the Interior
National Park Service**

**NATIONAL REGISTER OF HISTORIC PLACES
CONTINUATION SHEET**

Section: 10, photographs

Page: 49

South Cherry Street Historic District
Vicksburg, Warren County, Mississippi

- Photo 40 of 78 View of 1907 and 1909 Cherry Street facades (west), facing southeast
- Photo 41 of 78 View of 2011 Cherry Street facade (west), facing south
- Photo 42 of 78 View of 2101, 2111, and 2119 Cherry Street facades (west), facing southeast
- Photo 43 of 78 View of 2119 Cherry Street facade (west), facing east
- Photo 44 of 78 Streetscape of 2000 block of Cherry Street (east side), facing southeast
- Photo 45 of 78 Streetscape of 2000 block of Cherry Street (west side), 2206 and 2200 Cherry Street facades, facing northwest
- Photo 46 of 78 Streetscape of the northeast corner of Cherry and Chambers Streets, facing northeast
- Photo 47 of 78 View of 2201 and 2205 Cherry Street facades (west), facing northeast
- Photo 48 of 78 View of 2209 Cherry Street facade (west), facing east
- Photo 49 of 78 View of 2212 Cherry Street facade (east), facing west
- Photo 50 of 78 View of 2240 Cherry Street facade (east), facing west
- Photo 51 of 78 View of 2315 Cherry Street facade (west), facing east
- Photo 52 of 78 View of 2322 Cherry Street facade (east), facing west
- Photo 53 of 78 View of 2401 Cherry Street facade (west), facing east
- Photo 54 of 78 Streetscape of 2400 block of Cherry Street (east side), facing northeast
- Photo 55 of 78 Streetscape of 2400 block of Cherry Street (west side), facing northwest
- Photo 56 of 78 View of 2433 Cherry Street facade (west), facing east
- Photo 57 of 78 View of 2506 Cherry Street facade (east), facing west
- Photo 58 of 78 View of 2520 Cherry Street facade (east), facing west
- Photo 59 of 78 View of 2009 Drummond Street facade (south), facing north
- Photo 60 of 78 View of 2111 Drummond Street facade (west), facing southeast
- Photo 61 of 78 View of 2300 and 2308 Drummond Street facades (east), facing southwest
- Photo 62 of 78 View of 2301 and 2303 Drummond Street facades (west), facing southeast
- Photo 63 of 78 View of 2310 Drummond Street facade (east), facing west
- Photo 64 of 78 View of 2322 Drummond Street facade (east), facing west
- Photo 65 of 78 Streetscape of 2400 block of Drummond Street (east side), facing southeast

**United States Department of the Interior
National Park Service**

**NATIONAL REGISTER OF HISTORIC PLACES
CONTINUATION SHEET**

Section: 10, photographs

Page: 50

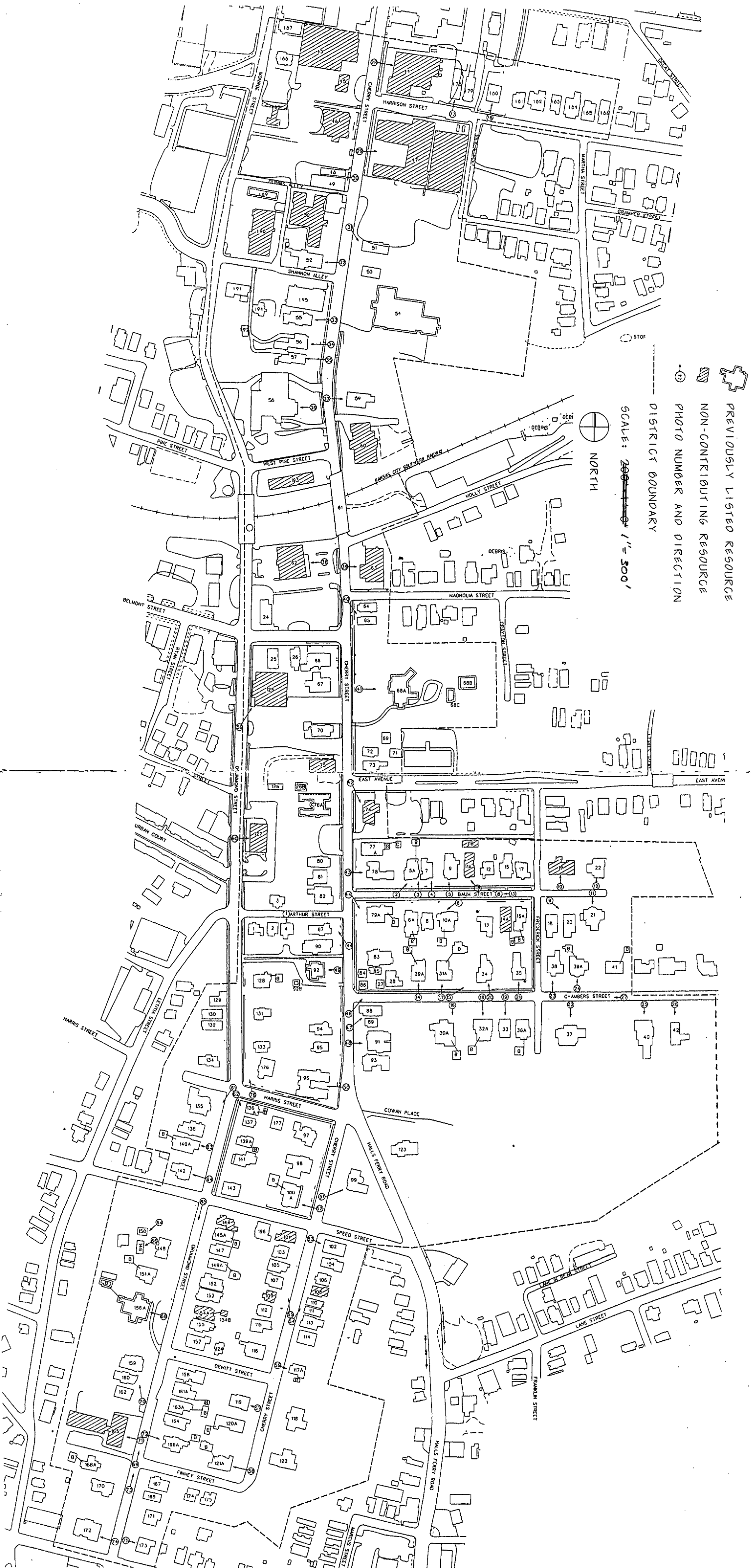
South Cherry Street Historic District
Vicksburg, Warren County, Mississippi

- Photo 66 of 78 View of 2408 Drummond Street facade (east), facing west
- Photo 67 of 78 View of 2416 Drummond Street facade (south), facing northwest
- Photo 68 of 78 View of 2430 Drummond Street facade (east), facing west
- Photo 69 of 78 Streetscape of 2500 block of Drummond Street (east side), facing northeast
- Photo 70 of 78 View of 2506, 2504, and 2502 Drummond Street facades (east), facing northwest
- Photo 71 of 78 View of 2518 Drummond Street facade (east), facing northwest
- Photo 72 of 78 View of 2521 Drummond Street facade (west), facing east
- Photo 73 of 78 Streetscape of Drummond Street, facing north from Finney Street
- Photo 74 of 78 View of 2608 Drummond Street facade (east), facing west
- Photo 75 of 78 View of 2609 Drummond Street facade (west), facing east
- Photo 76 of 78 View of 1203 Harris Street facade (south) and the northeast corner of Harris and Drummond Street, facing northeast
- Photo 77 of 78 View of 1017 Harrison Street facade (south), facing northwest
- Photo 78 of 78 View of 1105 Harrison Street facade (south), facing north

SOUTH CHERRY STREET NATIONAL REGISTER DISTRICT

VICKSBURG / WARREN COUNTY, MISSISSIPPI

JUNE 2003





1202 Arthur Street
South Cherry Street District
Vicksburg, Warren County, MS
Nancy H. Bell
May 2003
Photo 1 of 18



1300 Block (north side) Baum Street
South Cherry Street District
Vicksburg, Warren County, MS

Nancy H. Bell

May 2003

Photo 2 of 78



1315 Baum Street
South Cherry Street District
Vicksburg, Warren County, MS
Nancy H. Bell

May 2003

Photo 3 of 78



1317 Baum Street
South Cherry Street District
Vicksburg, Warren County, MS
Nancy H. Bell
May 2003
Photo 4 of 78



1319 Bank Street
South Cherry Street District
Vicksburg, Warren County, MS
Nancy H. Bell
May 2003
Photo 5 of 78



1320 and 1318 Baum Street
South Cherry Street District
Vicksburg, Warren County, MS

Nancy H. Bell

May 2003

Photo 6 of 78



1321 Baum Street
South Cherry Street District
Vicksburg, Warren County, MS
Nancy H. Bell
May 2003
Photo 7 of 78



1300 Block (north side) Baum Street

View to northwest

South Cherry Street District

Vicksburg, Warren County, MS

Nancy H. Bell

May 2003

Photo 8 of '78



1400 and 1406 Baum Street
South Cherry Street District
Vicksburg, Warren County, MS

Nancy A. Bell

May 2003

Photo 9 of 78



1401 Baum Street
South Cherry Street District
Vicksburg, Warren County, MS
Nancy H. Bell
May 2003
Photo 10 of 78



1414 Baum Street
South Cherry Street District
Vicksburg, Warren County, MS
Nancy H. Bell
May 2003
Photo 11 of 78



1415 Baum Street
South Cherry Street District
Vicksburg, Warren County, MS
Nancy H. Bell
May 2003
Photo 12 of 78



Baum Street (view to the west)
note brick street

South Cherry Street District
Vicksburg, Warren County, MS

Nancy H. Bell

May 2003

Photo 13 of 78



1315 Chambers Street
South Cherry Street District
Vicksburg, Warren County, MS
Nancy H. Puel
May 2003
Photo 14 of 78



Chambers Street (1300 Block - view
to the east)

South Cherry Street District

Vicksburg, Warren County, MS

Nancy H. Bell

May 2003

Photo 15 of 28



1322 Chambers Street

South Cherry Street District
Vicksburg, Warren County, MS

Nancy H. Bell

May 2003

Photo 16 of 78



1325 Chambers Street
South Cherry Street District
Vicksburg, Warren County, MS
Nancy H. Bell
May 2003
Photo 17 of 78



1328 Chambers Street
South Cherry Street District
Vicksburg, Warren County, MS
Nancy H. Bell
May 2003
Photo 18 of 78



1332 Chambers Street
South Cherry Street District
Vicksburg, Warren County, MS
Nancy A. Bell
May 2003
Photo 19 of 78



1333 Chambers Street
South Cherry Street District
Vicksburg, Warren County, MS
Nancy H. Bell
May 2003
Photo 20 of 78



1337 Chambers Street
South Cherry Street District 222
Vicksburg, Warren County, MS
Nancy H. Bell
May 2003
Photo 21 of 78



1402 Chambers Street
South Cherry Street District
Vicksburg, Warren County, MS
Nancy H. Bell
May 2003
Photo 22 of 78



1403 Chambers Street -
South Cherry Street District
Vicksburg, Warren County, MS
Nancy H. Bell
May 2003
Photo 23 of 78



1407 Chambers Street
South Cherry Street District
Vicksburg, Warren County, MS
Nancy H. Bell

May 2003

Photo 24 of 78



1414 Chambers Street
South Cherry Street District
Vicksburg, Warren County, MS
Nancy H. Bell
May 2003
Photo 25 of 78



~~140~~ 1420 Chambers Street
South Cherry Street District
Vicksburg, Warren County, MS
Nancy H. Psen
May 2003
Photo 26 of 78



Chambers Street (view from 1400 block looking
southwest)

South Cherry Street District
Vicksburg, Warren County, MS

Nancy H. Bell

May 2003

Photo 27 of 178



1515 Cherry street
South Cherry Street District
Vicksburg, Warren County, MS
Nancy H. Bell
May 2003
Photo 28 of 78



1607 Cherry Street
South Cherry Street District
Vicksburg, Warren County, MS
Naucy L. Bell
May 2003
Photo 29 of 78



1620 and 1618 Cherry Street
South Cherry Street District
Vicksburg, Warren County, MS
Nancy H. Bell
May 2003
Photo 30 of 78



1711 and 1717 Cherry Street
South Cherry Street District
Vicksburg, Warren County, MS
Nancy H. Bell
May 2003
Photo 31 of 78



1714 Cherry Street
South Cherry Street District
Vicksburg, Warren County, MS
Nancy H. Bell
May 2003
Photo 32 of 78



1810 Cherry Street
South Cherry Street District
Vicksburg, Warren County, MS
Nancy H. Bell
May 2003
Photo 33 of 78



1816 Cherry Street
South Cherry Street District
Vicksburg, Warren County, MS
Nancy H. Bell
May 2003
Photo 34 of 78



1818 Cherry Street
South Cherry Street District
Vicksburg, Warren County, MS
Nancy H. Bell
May 2003
Photo 35 of 78



1830 Cherry Street
South Cherry Street District
Vicksburg, Warren County, MS
Nancy H. Bell
May 2003
Photo 36 of 78



1831 Cherry Street
South Cherry Street District
Vicksburg, Warren County, Ms
Nancy G. Bell
May 2003
Photo 37 of 78



STATE BANK & TRUST COMPANY
EST. 1893

STATE
BANK
EST. 1893

DRIVE-THRU BANK
9 AM TO 5 PM

1900 Cherry Street
South Cherry Street District
Vicksburg, Warren County, MS
Nancy H Bell
May 2003
Photo 38 of 78



1905 Cherry Street
South Cherry Street District
Vicksburg, Warren County, MS
Nancy H. Bell
May 2003
Photo 39 of 78



1907 and 1909 Cherry Street
South Cherry Street District
Vicksburg, Warren County, MS
Nancy L. Bell
May 2003 Photo 40 of 78



2011 Cherry Street
South Cherry Street District
Vicksburg, Warren County, MS
Nancy H. Bell
May 2003
Photo 41 of 78



Trustmark

National Bank

EAST
30th

ustmark

2101, 2111, 2119 Cherry Street
South Cherry Street Thstrick
Vicksburg, Warren County, MS

Nancy H. Bell

May 2003

Photo 42 of 78



2119 Cherry Street
South Cherry Street District
Vicksburg, Warren County. MS
Nancy H. Bell
May 2003 Photo 43 of 78



2000 Block Cherry Street (east side)
South Cherry Street District
Vicksburg, Warren County, MS
Nancy H. Bell
May 2003
Photo 44 of 78



2206 + 2200 Cherry St.

2000 Block Cherry Street (west side)
South Cherry Street District
Vicksburg, Warren County, MS
Nancy H. Bell
May 2003
Photo 45 of 73



Northeast corner of Cherry & Chambers
South Cherry Street District
Vicksburg, Warren County, MS
Nancy H. Bell
May 2003
Photo 46 of 78



2201 & 2205 Cherry Street
South Cherry Street District
Vicksburg, Warren County, MS
Nancy H. Bell
May 2003
Photo 47 of 78



2209 Cherry Street
South Cherry Street District
Vicksburg, Warren County, MS
Nancy H. Bell
May 2003
Photo 48 of 78



2212 Cherry Street
South Cherry Street District
Vicksburg, Warren County, MS
Nancy H. Bell
May 2003
Photo 49 of 78



2240 Cherry Street
South Cherry Street District
Vicksburg, Warren County, MS
Nancy H. Bell
May 2003
Photo 50 of 78



2315 Cherry Street
South Cherry Street District
Vicksburg, Warren County, MS
Nancy H. Bell
May 2003
Photo 51 of 78



2322 Cherry Street
South Cherry Street District
Vicksburg, Warren County, MS
Nancy H. Bell
May 2003
Photo 52 of 78



2401 Cherry Street
South Cherry Street District
Vicksburg, Warren County, MS
Nancy H. Bell
May 2003
Photo 53 of 78



2400 Block Cherry Street (east side - View
to northeast)

South Cherry Street District
Vicksburg, Warren County, MS
Nancy H. Bell

May 2003 Photo 54 of 78



2400 Block Cherry Street (west side-
view to northwest)

South Cherry Street District
Vicksburg, Warren County, MS
Nancy L. Bell
May 2003 Photo 55 of 78



2433 Cherry Street
South Cherry Street District
Vicksburg, Warren County, MS
Nancy H. Bell
May 2003
Photo 56 of 78



2506 Cherry Street
S. Cherry Street District
Vicksburg, Warren County, MS
Nancy H. Bell
May 2003
Photo 57 of 78



2520 Cherry Street
South Cherry Street District
Vicksburg, Warren County, MS
Nancy H. Bell
May 2003
Photo 58 of 78



2009 Drummond Street
South Cherry Street District
Vicksburg, Warren County, MS
Nancy H. Bell
May 2003
Photo 59 of 78



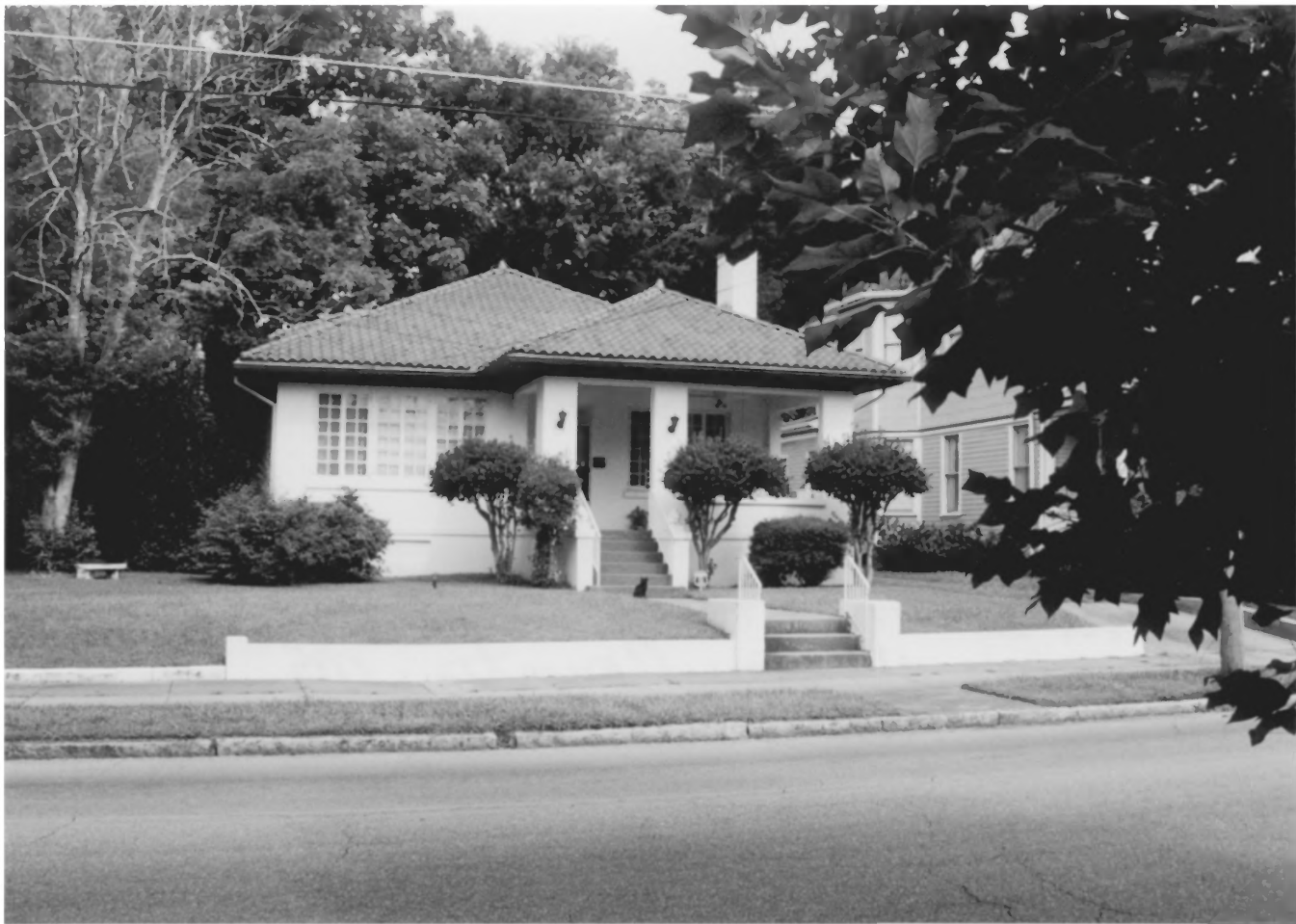
2111 Drummmond Street
South Cherry Street District
Vicksburg, Warren County, MS
Nancy H. Bell
May 2003
Photo 60 of 78



2300 and 2308 Drummmond St
South Cherry Street District
Vicksburg, Warren County, MS
Nancy H. Bell
May 2003
Photo 61 of 78



2301 and 2303 Drummmond Street
South Cherry Street District
Vicksburg, Warren County, MS
Nancy H. Bell
May 2003
Photo 62 of 78



2310 Drummond Street
South Cherry Street District
Vicksburg, Warren County, MS
Nancy H. Bell
May 2003
Photo 63 of 78



2322 Drummond Street
South Cherry Street District
Vicksburg, Warren County, MS
Nancy H. Bell
May 2003
Photo 64 of 78



2400 Block Drummmond Street (east side)
view to southeast
South Cherry Street District
Vicksburg, Warren County, MS
Nancy H. Bell
May 2003 Photo 65 of 78



2408 Drummond Street
South Cherry Street District
Vicksburg, Warren County, MS
Nancy H. Bell
May 2003
Photo 66 of 78



2416 Drummond Street
South Cherry Street District
Vicksburg, Warren County, MS
Nancy H. Bell
May 2003
Photo 67 of 78



2430 Drummond Street
South Cherry Street District
Vicksburg, Warren County, MS
Nancy H. Bell
May 2003
Photo 68 of 78



View to northeast

2500 Block (east side) Drummord Street
South Cherry Street District
Vicksburg, Warren County, MS
Nancy H. Bell
May 2003
Photo 69 of 78

3720222 N N N 2220228



2506, 2504, 2502 Drummmond Street
South Cherry Street District
Vicksburg, Warren County, MS
Nancy H. Bell
May 2003
Photo 70 of 78



2518 Drummmond Street
South Cherry Street District
Vicksburg, Warren County, ms
Nancy H. Bell
May 2003
Photo 71 of 78



2521 Drummmond Street
South Cherry Street District
Vicksburg, Warren County, MS
Nancy H. Bell
May 2003
Photo 72 of 78



Drummond Street Streetscape, facing north
South Cherry Street District
Vicksburg, Warren County, MS
Nancy H. Bell
May 2003
Photo 73 of 78



2608 Drummond Street
South Cherry Street District
Vicksburg, Warren County, MS
Nancy H. Bell
May 2003
Photo 74 of 78



2609 Drummond Street
South Cherry Street District
Vicksburg, Warren County, MS
Nancy H. Bell
May 2003
Photo 75 of 78



1203 Harris Street (northeast corner
of Drummmond & Harris) view to n.e.
South Cherry Street District
Vicksburg, Warren County, MS
Nancy H. Bell
May 2003
Photo 76 of 78



1017 Harrison Street
South Cherry Street District
Vicksburg, Warren County, MS
Nancy H. Bell
May 2003
Photo 77 of 78



1105 Harrison Street
South Cherry Street District
Vicksburg, Warren County, MS
Nancy H. Bell
May 2003
Photo 78 of 78