

(Oct. 1990)

United States Department of the Interior
National Park Service

RECEIVED

FEB 14 1994

NATIONAL REGISTER OF HISTORIC PLACES
REGISTRATION FORM

NATIONAL
REGISTER

1. Name of Property

historic name: South Ward Street Historic District

other name/site number:

2. Location

street & number: Church Street, West Gilmore, and South Ward
Streets

not for publication: N/A

city/town: Senatobia

vicinity: N/A

state: Mississippi code: MS county: Tate code: 137 zip code: 38668

3. State/Federal Agency Certification

As the designated authority under the National Historic Preservation Act of 1986, as amended, I hereby certify that this nomination _____ request for determination of eligibility meets the documentation standards for registering properties in the National Register of Historic Places and meets the procedural and professional requirements set forth in 36 CFR Part 60. In my opinion, the property meets _____ does not meet the National Register Criteria. I recommend that this property be considered significant _____ nationally _____ statewide locally. (____ See continuation sheet for additional comments.)

Kenneth H. P. Pool February 1, 1994
Signature of certifying official Date

Deputy State Historic Preservation Officer
State or Federal agency and bureau

In my opinion, the property _____ meets _____ does not meet the National Register criteria. (____ See continuation sheet for additional comments.)

Signature of commenting or other official Date

State or Federal agency and bureau

4. National Park Service Certification

I, hereby certify that this property is:

- entered in the National Register Mal M. Way 3/3/94
 ___ See continuation sheet.
- determined eligible for the
 National Register
 ___ See continuation sheet.
- determined not eligible for the
 National Register
- removed from the National Register
- other (explain): _____

Signature of Keeper Date of Action

5. Classification

Ownership of Property: Private

Category of Property: District

Number of Resources within Property:

Contributing	Noncontributing	
53	11	buildings
1	-0-	sites
-0-	-0-	structures
-0-	-0-	objects
54	11	Total

Number of contributing resources previously listed in the National Register: N/A

Name of related multiple property listing:

Architectural and Historical Resources of Senatobia, Mississippi

6. Function or Use

Historic: DOMESTIC
 DOMESTIC
 RELIGION
 Current : DOMESTIC
 DOMESTIC
 RELIGION

Sub: Single Dwelling
 Secondary Structure
 Religious Facility
 Sub: Single Dwelling
 Secondary Structure
 Religious Facility

7. Description

Architectural Classification:

Italianate
 Queen Anne
 Colonial Revival

Other Description: N/A

Materials: foundation BRICK roof ASPHALT
 walls BRICK other Wooden Porches
 WOOD

8. Statement of Significance

APPLICABLE NATIONAL REGISTER CRITERIA

AREAS OF SIGNIFICANCE

- A Property is associated with events that have made a significant contribution to the broad patterns of our history.
- B Property is associated with the lives of persons significant in our past.
- X C Property embodies the distinctive characteristics of a type, period, or method of construction or represents the work of a master, or possesses high artistic values, or represents a significant and distinguishable entity whose components lack individual distinction.
- D Property has yielded, or is likely to yield, information important in prehistory or history.

ARCHITECTURE

PERIOD OF SIGNIFICANCE

Ca. 1875 to ca. 1940

CRITERIA CONSIDERATIONS N/A

SIGNIFICANT DATES

N/A

Property is:

- X A owned by a religious institution or used for religious purposes (Inventory Nos. 32, 33, 34)
- B removed from its original location.
- C a birthplace or grave
- D a cemetery
- E a reconstructed building, object, or structure
- F a commemorative property
- G less than 50 years of age or achieved significance within the past 50 years.

SIGNIFICANT PERSON

N/A

CULTURAL AFFILIATION

N/A

ARCHITECT/BUILDER

Various, Unknown

=====

9. MAJOR BIBLIOGRAPHICAL REFERENCES

=====

X See continuation sheet.

PREVIOUS DOCUMENTATION ON FILE (NPS):

- preliminary determination of individual listing (36 CFR 67) has been requested.
- previously listed in the National Register
- previously determined eligible by the National Register
- designated a National Historic Landmark
- recorded by Historic American Buildings Survey # _____
- recorded by Historic American Engineering Record # _____

PRIMARY LOCATION OF ADDITIONAL DATA:

- State historic preservation office Local government
- Other state agency University
- Federal agency Other

 -- Specify Repository: Mississippi Department of Archives and History

=====

10. Geographical Data

=====

Acreage of Property: Approximately 26 acres

UTM References: Zone Easting Northing Zone Easting Northing

I	<u>16</u>	<u>227900</u>	<u>3834310</u>	J	<u>16</u>	<u>228240</u>	<u>3834350</u>
K	<u>16</u>	<u>228290</u>	<u>3833810</u>	L	<u>16</u>	<u>227700</u>	<u>3833810</u>

 ___ See continuation sheet.

Verbal Boundary Description: See continuation sheet.

Boundary Justification: See continuation sheet.

=====

11. Form Prepared By

=====

Name/Title: John Linn Hopkins, Preservation Consultant

Organization: N/A

Date: June 1, 1993

Street & Number: 974 Philadelphia Street

Telephone: (901) 278-5186

City or Town: Memphis

State: TN ZIP: 38104

=====

PROPERTY OWNER

=====

Name: Various

Street & Number: N/A

Telephone: N/A

City/Town: N/A

State: N/A

Zip Code: N/A

(8-86)

RECEIVED**FEB 14 1994****NATIONAL
REGISTER**United States Department of the Interior
National Park ServiceNATIONAL REGISTER OF HISTORIC PLACES
CONTINUATION SHEETSection number 7 Page # 1 South Ward Street Historic District
Senatobia, Tate County, Mississippi
=====

NARRATIVE DESCRIPTION

The South Ward Street Historic District is an irregularly-shaped residential neighborhood in the south central portion of the city of Senatobia, Tate County, Mississippi. The district lies to the south of the central business district (Downtown Senatobia, NR pending), and is immediately adjacent to the Tate County Courthouse (201 South Ward Street, NR pending). The Illinois Central Gulf Railroad parallels the line of South Ward Street immediately to the east of the district. The primary axis of the district is formed by the shallow dogleg alignment of South Ward Street. Related resources are also found along Church and West Gilmore streets, to the west of South Ward Street.

The topographic character of the district is generally flat along South Ward Street, but drops off slightly along West Gilmore toward a small creek at the western edge of the district. Consequently, most buildings in the district are placed at grade. The public landscaping of the district is marked by mature street trees which form a partial canopy spanning the street; varieties of street trees include red oak, white oak, tulip poplar, sycamore and maple. The lot pattern of the district varies widely, from as little as fifty feet in frontage to as much as 300 feet. Front setbacks also vary widely, ranging from 30 to 200 feet.

Historic architectural styles found in the district include the Italianate, Queen Anne, Colonial Revival, Tudor Revival, Craftsman, Neo-Classical Revival and Minimalist Traditional styles. House types include the side L-plan house, side L-plan cottage, side T-plan house, pyramidal cottage, homestead house, bungalow, composite cottage, English cottage, Cape, four-square, and double-crib.

Apart from the residences in the district, there is one complex of non-residential buildings-- the complex of the First Baptist Church of Senatobia. The non-residential structures contained in this complex include the domed sanctuary of the 1928 church building, and its newer sanctuary, built in 1959. Though the two buildings are connected by various additions and annexes, they have been treated as separate structures for the purposes of the nomination. The 1928 church building serves as an important feature of the streetscapes in the district because of its location directly opposite the eastern terminus of Church Street. The church building serves as the backdrop for the vista along Church Street looking east from North Panola Street.

Presented below is an inventory of the buildings which make up the South Ward Street Historic District. Buildings which contribute to the historic character of the district are identified with the notation "C". Buildings

United States Department of the Interior
National Park Service

NATIONAL REGISTER OF HISTORIC PLACES
CONTINUATION SHEET

Section number 7 Page # 2 South Ward Street Historic District
Senatobia, Tate County, MS
=====

which do not contribute to the historic character of the district (due to insensitive alterations or their recent construction date) are identified with the notation "NC". The notation of "NC*" is made for non-contributing buildings which may retrieve their historic integrity through careful removal of the recent alterations.

There are elements of significant character provided by the the general streetscapes in the district which establish its qualities of historic setting, as evolved over time. The pattern of streets, lot divisions, front yard, and side yard setbacks all combine to establish a matrix of rhythm surrounding its historic buildings; the patterns of public spaces, historic street trees, sidewalks, lawns and private plantings reflect evidence of continuity in the district as a place for living. All of these elements contribute to the historic significance of the district, but are not presented in the inventory of buildings that follows. Never-the-less, these characteristics have been combined and counted in the overall number of resources as one contributing site.

001 C 105 Church Street
One-story, three-bay, frame, side T-plan cottage with Colonial Revival influence, built ca. 1890-95. Gable roofs with plain projecting eaves, covered with asphalt shingles. Exterior walls have aluminum siding. Windows are 4/4 DHSL. Partial-width, hip-roofed porch supported by chamfered posts. Entrance contains a six-panel replacement door.

Garage, ca. 1920-25. One-story, two-bay, frame, gable roof, board & batten siding, hinged bead board doors. (C)
Backhouse, ca. 1980-85. One-story, three-bay, frame, gable roof. (NC)

002 C 107 Church Street
One-story, four-bay, frame side L-plan cottage with Colonial Revival influence, built ca. 1900-05. Gable roofs with plain projecting eaves, covered with asphalt shingles. Exterior walls have ship lap siding, installed ca. 1950-55. Windows are 1/1 DHSL. Partial-width, shed-roofed porch supported by turned posts. Entrance is a single-light, single-panel door topped by a single-light transom.

003 C 108 Church Street
One-story, four-bay, frame composite cottage with Queen Anne influence, built ca. 1890-95. Pyramidal hip roof with boxed cornice, covered with asphalt shingles. Exterior walls have weatherboard siding. Windows are 1/1 DHSL.

(8-86)

United States Department of the Interior
National Park Service

NATIONAL REGISTER OF HISTORIC PLACES
CONTINUATION SHEET

Section number 7 Page # 3 South Ward Street Historic District
Senatobia, Tate County, MS

=====

108 Church Street, continued:

U-plan, hip and center gable porch with scroll-sawn gable decoration, fish scale shingles, brackets and spindlework frieze, supported by Ionic columns on boxed bases. Entrance is a single-light door flanked by a single-sidelight, with stained-glass transom.

Garage, ca. 1915-20. One-story, one-bay, frame, front gable with jerkinhead, weatherboard siding. (C)

- 004 C 110 Church Street
One-story, five-bay, frame bungalow with Craftsman influence, built ca. 1910-15. Gable front roof with jerkinhead, exposed rafter tails and knee brace brackets, covered with asphalt shingles. Exterior walls have weatherboard siding. Windows are 12/1 DHSL. Full-width, flat and hip roof supported by paired boxed columns. Entrance has a nine-light, three-bay door.

Garage, ca. 1910-15. One-story, one-bay, frame, gable roof, weatherboard siding. (C)

- 005 C 112 Church Street
One-story, five-bay, brick veneered Cape with Minimalist Traditional influence, built ca. 1930-35. Side gable roof with boxed cornice, covered with asphalt shingles. Windows are 6/6 DHSL. One-bay, gable-roofed side porch, enclosed ca. 1960-65, supported by brick piers. Entrance is a solid replacement door.

Garage, ca. 1930-35. One-story, one-bay, frame, gable roof, weatherboard siding, hinged vertical board doors. (C)

- 006 C 114 Church Street
Two-story, four-bay, frame homestead house with Colonial Revival influence, built ca. 1905-10. Pyramidal hip roof with boxed cornice, covered with asphalt shingles. Hip roofed dormer contains two, fixed single-light windows. Exterior walls have weatherboard siding. Windows are 1/1 DHSL. Side bay window with multi-light sashes. Hip-roofed porch supported by columns with Ionic capitals; block spindle balustrade. Entrance has a single-light Cottage door.

Garage, ca. 1910-15. One-story, two-bay, frame, gable roof, weatherboard siding, 4/4 DHSL, bead board and batten doors. (C)

United States Department of the Interior
National Park Service

NATIONAL REGISTER OF HISTORIC PLACES
CONTINUATION SHEET

Section number 7 Page # 4 South Ward Street Historic District
Senatobia, Tate County, MS
=====

007 NC* 116 Church Street
One-story, three-bay, frame side L-plan cottage with Italianate influence, built ca. 1900-05. Gable roofs with plain projecting eaves, covered with asphalt shingles. Exterior walls have weatherboard siding. Windows are 6/6 DH replacement sashes, set in shortened openings. Original porch replaced with one-bay, shed-roofed replacement supported by wrought iron posts. Entrance contains a six-panel replacement door.

Storage Shed, ca. 1910-15. One-story, one-bay, frame, shed roof, weatherboard siding, hinged bead board doors. (C)

008 C 118 Church Street
Two-story, four-bay, frame homestead house with Colonial Revival influence, built ca. 1900-05. Complex hip and gable roof with boxed cornice, molded frieze, enclosed gable ends. Exterior walls have weatherboard and aluminum siding. Windows are 8/1 DHSL. Full-width, L-plan, hipped-roof porch supported by Doric columns; turned spindle balustrade. Entrance contains a pair of single-light doors.

Garage/shed, ca. 1920-25. One-story, three-bay, frame, gable roof, weatherboard siding, single-light fixed windows, replacement slab doors. (C)

009 C 107 West Gilmore Street
One-story, three-bay, frame pyramidal cottage with Craftsman influence, built ca. 1910-15. Pyramidal hip roof with boxed cornice, covered with asphalt shingles. Exterior wall surfaces have weatherboard siding. Windows are 1/1 DHSL. L-plan, hip roofed porch supported by battered boxed piers; turned spindle balustrade. Entrance contains single-light, single-panel door surrounded with transom and sidelights.

Garage, ca. 1915-20. One-story, one-bay, frame, gable roof with jerkinhead, weatherboard siding. (C)

010 C 203 West Gilmore Street
One-story, three-bay, brick veneered bungalow with Craftsman influence, built ca. 1925-30. Gable-front roof with boxed cornice, covered with asphalt shingles. Windows

(8-86)

United States Department of the Interior
National Park ServiceNATIONAL REGISTER OF HISTORIC PLACES
CONTINUATION SHEETSection number 7 Page # 5 South Ward Street Historic District
Senatobia, Tate County, MS
=====

203 West Gilmore, continued:

are 3/1 DHSLS. Partial-width, cutaway porch supported by wrought iron replacement posts on brick bases. Entrance is a three-light, one-panel Craftsman door.

Garage, ca. 1925-30. One-story, one-bay, frame, gable roof, weatherboard siding, hinged board and batten doors. (C)

011 C 204 West Gilmore Street
One-story, three-bay, brick-veneered Cape with Tudor Revival influence, built ca. 1935-40. Side gable roof with boxed cornice, covered with asphalt shingles. Windows are 6/1 DHSLS. One-bay, projecting gable-roofed entrance vestibule. Entrance has a semi-circular arched surround containing an arched three-light, one-panel door.

Garage, ca. 1935-40. One-story, one-bay, frame, gable roof, exterior plywood siding. (C)

012 C 205 West Gilmore Street
One-story, three-bay, frame side L-plan cottage with Colonial Revival influence, built ca. 1890-95. Gable roofs with plain projecting eaves, covered with asphalt shingles. Exterior walls have weatherboard siding. Windows are 4/4 DHSLS. Partial-width, shed roofed porch supported by boxed columns on brick bases. Entrance contains a multi-light door topped by a divided light transom.

Garage, ca. 1920-25. One-story, one-bay, frame, hip roof, weatherboard siding, hinged board and batten doors. (C)

013 C 206 West Gilmore Street
One-story, three-bay, brick veneered Cape with Colonial Revival influence, built ca. 1935-40. Side gable roof with boxed cornice, covered with asphalt shingles. Windows are 6/6 DHSLS, in pairs. One-bay, projecting gable-front vestibule contains entrance. Side cutaway porch enclosed in 1960-65. Side gable-roofed porte cochere supported by brick piers. Entrance is a nine-light, four-panel door.

Garage, ca. 1930-35. One-story, one-bay, brick-veneered, gable roof, board and batten doors. (C)

United States Department of the Interior
National Park Service

NATIONAL REGISTER OF HISTORIC PLACES
CONTINUATION SHEET

Section number 7 Page # 6 South Ward Street Historic District
Senatobia, Tate County, MS
=====

- 014 C 208 West Gilmore Street
One-story, six-bay, brick veneered Cape with Minimalist Traditional influence, built ca. 1935-40. Side gable roofs with boxed cornice, covered with asphalt shingles. Windows are 6/1 DHSL. Side, side-gable porch supported by brick piers, enclosed with weatherboard siding and multiple 1/1 DHSL. Entrance contains a six-panel, single-light door.
- 015 C 210 West Gilmore Street
One-story, five-bay, brick veneered side L-plan cottage with Minimalist Traditional influence, built ca. 1935-40. Side gable roofs with boxed cornice, covered with asphalt shingles. Windows are 24/24 DHSL. Side wing added ca. 1960-65. Entrance is a Craftsman single-light, single-panel door.
- 016 C 212 West Gilmore Street
One-story, three-bay, side L-plan cottage with Colonial Revival influence, built ca. 1910-15. Gable and hip roofs with plain projecting eaves, covered with asphalt shingles. Hip-roofed dormer contains two 1/1 DHSL. Exterior walls have weatherboard siding. Windows are 6/1 DHSL. Partial-width, hip-roofed porch supported by Doric columns; block spindle balustrade. Entrance is a single-light Cottage door.
- 017 NC 203 South Ward Street
One-story, four-bay brick veneered Cape with Minimalist Traditional influence, built ca. 1945-50. Side gable roof with flush eaves, covered with asphalt shingles. Windows are 8/8 DHSL. Entrance stoop covered by gable-roofed hood and has a solid replacement door.
- 018 C 205 South Ward Street
One-story, three-bay, frame bungalow with Craftsman influence, built ca. 1895-1900 and modified in ca. 1920-25. Side gable roof with jerkinheads and molded boxed cornice with frieze, covered with asphalt shingles. Exterior walls have weatherboard siding. Windows are Craftsman multi-light/1 DHSL. Partial-width, hip-roofed porch supported by paired boxed piers. Entrance has a Craftsman multi-light door with transom and sidelights.

Garage, ca. 1920-25. One-story, two-bay, frame, gable roof, weatherboard siding, overhead door. (C)

(8-86)

United States Department of the Interior
National Park Service

NATIONAL REGISTER OF HISTORIC PLACES
CONTINUATION SHEET

Section number 7 Page # 7 South Ward Street Historic District
Senatobia, Tate County, MS

=====

- 019 C 207 South Ward Street
One-story, four-bay, side L-plan cottage with Colonial Revival influence, built ca. 1895-1900. Gable roofs with plain projecting eaves, covered with asphalt shingles. Exterior walls have vinyl siding. Windows are 4/4 DHSL; some full wall-height. Partial-width, shed-roofed porch and side porch supported by chamfered posts; block spindle balustrade. Entrance has a single-light, two-panel door topped with a single-light transom.
- Garage, ca. 1920-25. One-story, one-bay, frame, gable roof with jerkinhead, weatherboard siding. (C)
- 020 C 224 South Ward Street
Two-story, five-bay, load-bearing brick masonry side L-plan house with Italianate influence, built ca. 1875-80. Gable roofs with boxed cornices, frieze and regularly-spaced brackets, covered with metal roofing. Corbeled piers divide window and door bays. Windows are 4/4 DHSL, set within segmental-arched reveals. Partial-width, shed-roofed porch supported by chamfered posts. Entrance is set within a segmental arched surround and contains a four-panel door.
- a. Garage, c. 1915-20. One-story, one-bay, cast block, gable roof. (C)
- b. Quarters, ca. 1885-90. One-story, one-bay, gable roof, board & batten siding, shed-roofed porch with posts, single-light door. (C)
- 021 C 301 South Ward Street Montgomery Curry Ellis House
Two-story, three-bay, four-square-like house with Colonial Revival influence, built ca. 1895-1900 and altered in ca. 1920-25. Hip roof with boxed cornice, covered with asphalt shingles. Exterior walls have weatherboard siding. Windows are 1/1 DHSL, some in pairs. Full-width, hip-roofed porch supported by brick piers; closed brick balustrade. Entrance has a multi-light door with multi-light transom and sidelights.
- Storage shed, ca. 1910-15. One-story, three-bay, frame, gable roof with jerkinhead, weatherboard siding, 1/1 DHSL. (C)
- 022 NC 302 South Ward Street
One-story, four-bay, brick veneered Cape with Colonial Revival influence, built ca. 1955-60. Side gable roof with flush eaves, covered with asphalt shingles. Windows are 8/8 DHSL, and one multi-light bay window. Entrance contained in a one-bay, cutaway vestibule, and contains a six-panel door flanked by sidelights.

United States Department of the Interior
National Park Service

NATIONAL REGISTER OF HISTORIC PLACES
CONTINUATION SHEET

Section number 7 Page # 8 South Ward Street Historic District
Senatobia, Tate County, MS
=====

- 023 C 303 South Ward Street
One-story, five-bay, brick veneered English cottage with Tudor Revival influence, built ca. 1935-40. Side gable roof with boxed cornice, covered with asphalt shingles. Windows are eight-light casements. Entrance contained in cutaway vestibule, with a single-light, multi-panel door.

Garage, ca. 1975-80. One-story, three-bay, brick veneer, gable roof, 6/6 DHSL, multi-light door. (NC)
- 024 C 305 South Ward Street
One-story, six-bay, brick veneered bungalow with Craftsman influence, built ca. 1915-20. Side gable roof with jerkinheads and plain projecting eaves, covered with asphalt shingles. Windows are 1/1 DHSL. L-plan cutaway porch and side gable porte cochere supported by brick piers; closed brick balustrade. Entrance contains a multi-light double-door, topped by a multi-light transom.

Garage, ca. 1915-20. One-story, one-bay, frame, hip roof weatherboard siding. (C)
- 025 C 306 South Ward Street
One-story, six-bay, frame bungalow with Craftsman influence, built ca. 1910-15. Side gable roof with exposed rafter tails, covered with asphalt shingles. Exterior walls have wood shingle siding. Windows are 12/1 DHSL. L-plan, shed-roofed porch supported by boxed paneled piers on brick bases; block spindle balustrade. Entrance contains and eight-light, three-panel door.

Garage, ca. 1950-55. One-story, one-bay, concrete block, gable roof, asbestos shingles. (NC)
- 026 C 308 South Ward Street
Two-story, five-bay four-square with Craftsman and Colonial Revival influences, built ca. 1915-20. Hip roof with exposed rafter tails, covered with asphalt shingles. Three hip roofed dormers each contain rectangular vents. Exterior walls have weatherboard siding. Windows are 9/1 DHSL. One-bay flat-roofed porch supported by columns with Doric capitals. Entrance contains a solid replacement door flanked by sidelights.
- 027 C 309 South Ward Street
Two-story, five bay, stucco veneered modified four-square with Craftsman influence, built ca. 1910-15. Hip roof with boxed cornice and knee brace brackets, covered with

United States Department of the Interior
National Park Service

NATIONAL REGISTER OF HISTORIC PLACES
CONTINUATION SHEET

Section number 7 Page # 9 South Ward Street Historic District
Senatobia, Tate County, MS

=====

309 South Ward Street, continued:

asphalt shingles. Windows are 1/1 DHSL and paired multi-light casement. Partial-width flat and hip-roofed porch and porte cochere supported by stone piers; closed stone balustrade. Entrance contains a single-light door topped with a single-light transom.

- a. Garage, ca. 1910-15. One-story, two-bay, cast block, hip roof. (C)
- b. Garage, ca. 1910-15. One-story, two-bay, cast block, hip roof. (C)
- c. Quarters, ca. 1910?. One-story, one-bay, brick, gable roof. (C)

028 C 310 South Ward Street
One-story, five-bay frame bungalow with Craftsman influence, built ca. 1915-20. Gable-front roof with jerkinhead and exposed rafter tails, covered with asphalt shingles. Exterior walls have weatherboard siding. Windows are 9/1 DHSL. L-plan, hip-roofed porch supported by boxed piers on brick bases. Entrance has a Craftsman multi-light door.

029 C 312 South Ward Street
One-story, four-bay, brick veneered bungalow with Craftsman influence, built ca. 1910-15. Side gable roof with boxed cornice, covered with asphalt shingles. Gable ends are stuccoed and half-timbered. Windows are 6/1 DHSL. L-plan gable and hip porch and porte cochere supported by brick piers; cast stone balustrade. Entrance is a multi-light door with transom and sidelights.

030 NC 314 South Ward Street
One-story, three-bay, frame double-crib cottage with added brick veneer, built in ca. 1880-85 and altered in ca. 1970-75 with Minimalist Traditional influence. Side gable roof with boxed cornice, covered with asphalt shingles. Windows are 6/1 DHS replacement lights. Partial-width, shed-roofed porch supported by replacement boxed piers. Entrance contains a four-light, four-panel door.

Garage, ca. 1970-75. One-story, one-bay, concrete block, gable roof. (NC)

United States Department of the Interior
National Park Service

NATIONAL REGISTER OF HISTORIC PLACES
CONTINUATION SHEET

Section number 7 Page # 10 South Ward Street Historic District
Senatobia, Tate County, MS
=====

- 031 C 317 South Ward Street Sam C. Stevens House
Two-story, three-bay brick veneered four-square with Craftsman influence, built ca. 1920-25. Hip roof with boxed cornice and knee brace brackets, covered with asphalt shingles. Hip roofed dormer contains a louvered vent. Windows are 9/1 DHSL. L-plan, hip roofed porch and porte cochere supported by brick piers. Entrance has a Craftsman multi-light door.
- 032 C 400 South Ward Street (A) Original Sanctuary, First Baptist Church
One-story, five-bay, brick-veneered church with Neo-Classical Revival influence, built 1928. Flat roof behind parapet wall, with dome covered with metal roofing raised on circular drum, centered above entrance. Plain parapet with cast stone coping. Facade features an engaged pedimented distyle in antis portico, with Tuscan columns with Ionic capitals. Windows are rectangular and semi-circular-arched stained glass lights, with transoms. Entrance contains double-leaf doors with stained glass lights.
- 033 C 400 South Ward Street (B) Old Manse, First Baptist Church
One-story, four-bay brick veneered bungalow with Craftsman and added Colonial Revival influence, built ca. 1925 and modified ca. 1950-55. Gable-front roof with jerkinhead and exposed rafter tails, covered with asphalt shingles. Windows are 8/1 DHSL. Porte cochere covered with flat roof supported by boxed columns. Portion of porch across front removed ca. 1950-55. Entrance has a six-panel replacement door.
- 034 NC 400 South Ward Street (C) "New" Sanctuary, First Baptist Church
One-story, three-bay, brick veneered church with Neo-Colonial Revival influence, built 1958. Gable roof with boxed cornice and full entablature, covered with asphalt shingles. Center-front steeple with octagonal lanterns and spire. Facade has a pedimented tetrastyle portico with Tuscan columns and Doric capitals. Windows are rectangular and semi-circular-arched stained glass lights, with transoms. Center entrance with a broken pediment and pilasters, with six-panel double doors.

United States Department of the Interior
National Park Service

NATIONAL REGISTER OF HISTORIC PLACES
CONTINUATION SHEET

Section number 7 Page # 11 South Ward Street Historic District
Senatobia, Tate County, MS
=====

- 035 C 404 South Ward Street
One-story, five-bay, brick veneered Cape with Colonial Revival influence, built ca. 1935-40. Side gable roof with flush eaves, covered with asphalt shingles. Windows are 8/8 and pairs of 6/6 DHSL. Partial-width, shed-roofed porch supported by boxed columns. Entrance contains a four-light, four-panel door.

Garage, ca. 1935-40. One-story, one-bay, frame, gable roof, asbestos siding. (C)
- 036 C 405 South Ward Street Oglesby-Perkins House
Two-story, four-bay, frame modified homestead house with Queen Anne influence, built 1884. Complex hip and gable roof with plain projecting eaves and gable decoration, covered with standing seam metal roofing. Diagonal bead board and rectangular louvered vents in gable end. Exterior walls have weatherboard siding and bands of bead board between floors. Windows are 1/1 DHSL, some in pairs. L-plan, hip and gable porch supported by chamfered posts with brackets; scroll sawn filler balustrade. Entrance has a single-light door.
- 037 NC 407 South Ward Street
One-story, seven-bay, brick veneered galleried cottage with Colonial Revival influence, built ca. 1945-50. Side gable roof with boxed cornice, covered with asphalt shingles. Windows are 12/12 and 6/6 DHSL. Partial-width, shed-roofed porch supported by Doric columns. Entrance has a six-panel door.
- 038 C 408 South Ward Street
Two-story, three-bay, frame homestead house with Stick Style and Queen Anne influences, built ca. 1890-95. Complex hip and gable roof with projecting eaves with decorative rafter tails and vergeboard, covered with asphalt shingles. Exterior walls have weatherboard siding. Windows are 1/1 DHSL. L-plan, hip-roofed porch supported by turned posts, with scroll sawn brackets and turned spindle frieze; turned spindle balustrade with scroll sawn filler. Entrance is a single-light Cottage door.
- 039 C 409 South Ward Street Wooten House
Two-story, three-bay, side T-plan house with Colonial Revival influence, built ca. 1908. Gable roofs with plain projecting eaves, covered with asphalt shingles. Exterior walls have weatherboard and aluminum siding. Windows are

United States Department of the Interior
National Park Service

NATIONAL REGISTER OF HISTORIC PLACES
CONTINUATION SHEET

Section number 7 Page # 12 South Ward Street Historic District
Senatobia, Tate County, MS
=====

409 South Ward Street, continued:

1/1 DHSL. Partial-width, shed-roofed porch supported by turned posts with scrollsawn brackets; block spindle and turned spindle balustrade. Entrance contains a single-light, nine-panel door.

(8-86)

United States Department of the Interior
National Park ServiceNATIONAL REGISTER OF HISTORIC PLACES
CONTINUATION SHEETSection number 8 Page # 13 South Ward Street Historic District
Senatobia, Tate County, Mississippi
=====

NARRATIVE STATEMENT OF SIGNIFICANCE

The South Ward Street Historic District is being nominated under criterion C in the area of architecture for its significant concentration of well-preserved historic architectural styles and traditional building forms. This district makes a substantial contribution to the character of time and place that define Senatobia's identity as a city. The period of significance for the district begins with the date of its earliest structure and concludes with the date of the latest structure that reflects its significant architectural characteristics.

The development of the South Ward Street district was likely underway when construction of the Tate County Courthouse was begun in 1875. However, the buildings in evidence today suggest that most, if not all of these original dwellings have been replaced by later structures. It appears that the earliest structure remaining in the district which retains its original character is the fine brick Italianate residence built in ca. 1875-80 at 224 South Ward Street, known locally as the Shands House. Other notable structures were built in the district over the next half-century to fill out its historic character. Among these are the Oglesby-Perkins House, completed in 1884 for Ira Oglesby, a prominent local lawyer. This structure is a fine example of Queen Anne styling that remains well preserved, inside and out. Another residence of note is the property at 309 South Ward Street, which was built in ca. 1910-15 in the Craftsman style. The quality of design in this house, with its tent-like hip roof, suggests the hand of a talented architect, whose identity is unfortunately unknown. The same is true of the quality of the original sanctuary of the First Baptist Church; the proportions, qualities of design and materials, and attention to detail of this Neo-Classical Revival church also suggest the hand of a highly-talented architect, also unknown.

The variety and qualities of design among the historic building stock in the South Ward Street Historic District make a significant contribution to the scope of the entire historic environment of Senatobia. It is hoped that this nomination will help to insure the preservation of its qualities for future generations, and to spur further interest in the rediscovery of its history.

United States Department of the Interior
National Park Service

NATIONAL REGISTER OF HISTORIC PLACES
CONTINUATION SHEET

Section number 9 Page # 14 South Ward Street Historic District
Senatobia, Tate County, MS

=====

9. MAJOR BIBLIOGRAPHIC REFERENCES

Carpenter, Howard, editor, The History of Tate County (Senatobia, MS: B/C Printing, 1975)

Puryear, Caroline, contributor, "Progress Edition" Tate County Democrat, July 3, 1980, Section D, pgs. 1-12.

Sanborn Map Company, Sanborn Fire Insurance Maps for Senatobia, Mississippi, Map Series 1886, 1892, 1897, 1902, 1907, 1915, 1925, 1936-42.

(8-86)

United States Department of the Interior
National Park Service

NATIONAL REGISTER OF HISTORIC PLACES
CONTINUATION SHEET

Section number 10 Page # 15 South Ward Street Historic District
Senatobia, Tate County, MS

10. GEOGRAPHICAL DATA

Verbal Boundary Description

The property in nomination includes all that land in the city of Senatobia associated with the properties inventoried above as delineated with a heavy black line on the attached Tate County Property Tax Map 99G.

Boundary Justification

The property in nomination contains the largest contiguous concentration of properties in the area of South Ward Street that historically contribute to the development of the South Ward area during its period of historic significance.

(8-86)

United States Department of the Interior
National Park Service

NATIONAL REGISTER OF HISTORIC PLACES
CONTINUATION SHEET

Section number Photos Page # 16 South Ward Street Historic District
Senatobia, Tate County, Mississippi
=====

PHOTO LIST

SOUTH WARD STREET HISTORIC DISTRICT

Senatobia, Tate County, Mississippi

Photographer: John Linn Hopkins

Date: July, 1993

Negatives: Mississippi Department of Archives and History

Photo 1 of 9

View of 224 South Ward Street, looking generally northeast.

Photo 2 of 9

View of the west side of South Ward Street, looking generally south from 303 South Ward to 309 South Ward Street.

Photo 3 of 9

View of 309 South Ward Street, looking generally southwest.

Photo 4 of 9

View of 405 South Ward Street, looking generally southwest.

Photo 5 of 9

View of the First Baptist Church of Senatobia complex, with 400 (c) South Ward at right, and 400 (a) South Ward Street at left, looking generally northeast.

Photo 6 of 9

View of 408 South Ward Street, looking generally southeast.

Photo 7 of 9

View of the south side of West Church Street, from 108 West Church at left, to 114 West Church at right, looking generally southwest.

Photo 8 of 9

View of the streetscape looking due east along West Church Street from 108 West Church, which concludes with the original sanctuary of the First Baptist Church of Senatobia.

Photo 9 of 9

View of the south side of West Gilmore Street, looking generally southwest from 206 West Gilmore to 212 West Gilmore Street.

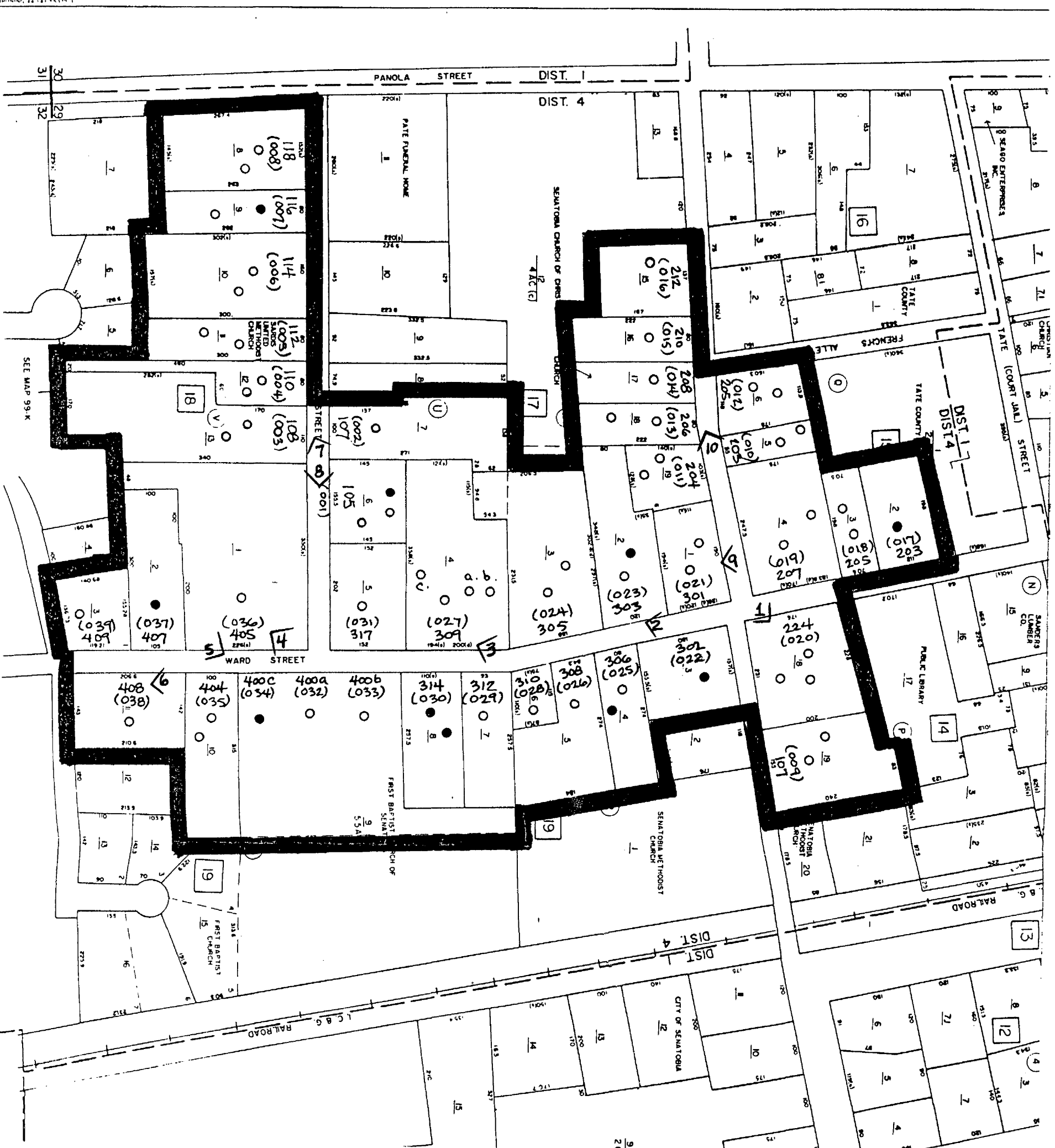


PHOTO MAP
 SOUTH WARD STREET HISTORIC DISTRICT
 SENATORIA, TATE COUNTY, MISSISSIPPI
 SCALE: 1" = 200'

- BOUNDARY:
- CONTRIBUTING STRUCTURE:
- NON-CONTRIBUTING STRUCTURE:





SOUTH WARD STREET HISTORIC DISTRICT

SENATORIA, TATE COUNTY, MS

PHOTO 1 OF 9



SOUTH WARD STREET HISTORIC DISTRICT
GENA TORBIA, TATE COUNTY, MS
PHOTO 2 of 9



SOUTH WARD STREET HISTORIC DISTRICT
SONATOBIA, TATE COUNTY, MS
PHOTO 3 OF 9



SOUTH WARD STREET HISTORIC DISTRICT

SENATOR BIRD, TATE COUNTY, MS

PHOTO 4 OF 9



SOUTH WIND STREET HISTORIC DISTRICT

SENATORIA, TATE COUNTY, MS

PHOTO 5 OF 9



SOUTH WABCO ST ROBERT HISTORIC DISTRICT
SENATORIA, TATG COUNTY, MS
PHOTO 6 OF 9



SOUTH WINDY STREET HISTORIC DISTRICT
SEWANTOBIAN, TATE COUNTY, MS
PHOTO 7 of 9



SOUTH WINDY STREET HISTORIC DISTRICT
SENATORIA, TATE COUNTY, MS
PHOTO 8 OF 9



SOUTH WARD STREET HISTORIC DISTRICT

SENATORIA, TATE COUNTY, MS

Photo 9 of 9