

RECEIVED 413
MAY 3 1 1995
INTERAGENCY RESOURCES DIVISION
NATIONAL PARK SERVICE

United States Department of the Interior
National Park Service

National Register of Historic Places
Registration Form

This form is for use in nominating or requesting determinations for individual properties and districts. See instructions in #1016. Complete the National Register of Historic Places Registration Form (National Register Bulletin 16A). Complete each item by marking "x" in the appropriate box or by entering the information requested. If an item does not apply to the property being documented, enter "N/A" for "not applicable." For functions, architectural classification, materials, and areas of significance, enter only categories and subcategories from the instructions. Place additional entries and narrative items on continuation sheets (NPS Form 10-900a). Use a typewriter, word processor, or computer, to complete all items.

1. Name of Property

historic name (Old) United States Post Office - Philadelphia

other names/site number Philadelphia Police Station

2. Location

street & number 523 Main Street Not for publication

city or town Philadelphia n/a vicinity

state Mississippi code MS county Neshoba code 099 zip code 39350

3. State/Federal Agency Certification

As the designated authority under the National Historic Preservation Act, as amended, I hereby certify that this nomination request for determination of eligibility meets the documentation standards for registering properties in the National Register of Historic Places and meets the procedural and professional requirements set forth in 36 CFR Part 60. In my opinion, the property meets does not meet the National Register criteria. I recommend that this property be considered significant nationally statewide locally. (See continuation sheet for additional comments.)
Kenneth H. D. Paul May 22, 1995
Signature of certifying official/Title Date
Deputy State Historic Preservation Officer
State of Federal agency and bureau

In my opinion, the property meets does not meet the National Register criteria. (See continuation sheet for additional comments.)

Signature of commenting official/Title Date

State or Federal agency and bureau

4. National Park Service Certification

- I hereby certify that the property is:
 entered in the National Register.
 See continuation sheet.
- determined eligible for the National Register
 See continuation sheet.
- determined not eligible for the National Register.
- removed from the National Register.
- other, (explain): _____

Edson H. Beall
Signature of the Keeper

Entered in the National Register Date of Action
6/30/95

5. Classification

Ownership of Property
(Check as many boxes as apply)

Category of Property
(Check only one box)

Number of Resources within Property
(Do not include previously listed resources in the count.)

- private
- public-local
- public-State
- public-Federal

- building(s)
- district
- site
- structure
- object

Contributing	Noncontributing	
1		buildings
		sites
		structures
		objects
1	0	Total

Name of related multiple property listing
(Enter "N/A" if property is not part of a multiple property listing.)

Number of contributing resources previously listed in the National Register

Mississippi Post Offices Thematic Resources, 1931-1941 N/A

6. Function or Use

Historic Functions
(Enter categories from instructions)

Current Functions
(Enter categories from instructions)

Government: Post Office

Government: Correctional Facility

7. Description

Architectural Classification
(Enter categories from instructions)

Materials
(Enter categories from instructions)

Classical Revival

foundation concrete

walls stucco

brick

roof not visible

other

Narrative Description

(Describe the historic and current condition of the property on one or more continuation sheets.)

United States Department of the Interior
National Park Service

National Register of Historic Places Continuation Sheet

Section number 7 Page 1

(Old) U.S. Post Office-Philadelphia DIVISION
Neshoba County, Mississippi NATIONAL PARK SERVICE

RECEIVED 413

MAY 3 1 1995

The former United States Post Office of Philadelphia Mississippi, now the Philadelphia Police Station, is located approximately two blocks east of the Neshoba County Courthouse, at the southwest corner of Main and Church Street. The style is loosely Classical Revival with some Mediterranean influence. The building is roughly rectangular in shape with a flat roof hidden by a parapet. It is mostly one story in height with a mezzanine level on the west side. The exterior surface is stucco with the exception of the foundation and some detailing which are left as exposed brick. A brick basement rises above grade to a water table consisting of one soldier course of brick.

The elevated main floor is made accessible by a flight of concrete steps with cast iron railings. The main facade (north) consists of five bays (window-window-door-window-window). The middle three bays are articulated by nonstructural arches of brick header voisoirs. The central entrance has new aluminum, glazed, double doors with a six light upper panel topped by a single transom. These doors are slightly recessed. Above the doorway is a new aluminum cantilevered awning, above which is a fanlight bordered by the aforementioned brick arch. Two lanterns flank the entrance. The windows in the main facade have wooden, twelve-over-twelve, double-hung sash. Windows on other walls are of various types and sizes, including four-over-four double-hung, and pairs of three-light casements. There is a variety of window surround features on the four elevations, including brick header surrounds, brick sills, and limestone sills. The westernmost bay of the front facade is set back about one foot from the rest of the north facade in order to articulate a partial mezzanine level located above the postmaster's office and vault area. This level is expressed externally by higher exterior walls with a small casement window over the westernmost bay of the north facade and four matching windows on the west elevation. All of these windows have brick header surrounds. The east and west facades on the main floor level each consist of five bays. A loading deck projects from the rear (south) elevation.

The interior plan consists of an L-shaped public lobby around the north and east sides, connecting the former postmaster's office on the northwest corner. The remaining area consists mainly of a large workroom. The mezzanine level contains a swing room and the postal inspector's lookout. The lobby features a polychrome, glazed tile floor, wood wainscoting, and the original wood and glass entry vestibule.

8. Statement of Significance

Applicable National Register Criteria

(Mark "x" in one or more boxes for the criteria qualifying the property for National Register listing.)

- Criteria A, B, C, D with checkboxes and descriptions.

Criteria Considerations

(Mark "x" in all the boxes that apply.)

Property is:

- Criteria A through G with checkboxes and descriptions.

Narrative Statement of Significance

(Explain the significance of the property on one or more continuation sheets.)

9. Major Bibliographical References

Bibliography

(Cite the books, articles, and other sources used in preparing this form on one or more continuation sheets.)

Previous documentation on file (NPS):

- Documentation checkboxes: preliminary determination, previously listed, etc.

Areas of Significance

(Enter categories from instructions)

Politics/Government

Architecture

Period of Significance

1935-1936

Significant Dates

1935-1936

Significant Person

(Complete if Criterion B is marked above)

N/A

Cultural Affiliation

N/A

Architect/Builder

Office of the Supervising Architect

Neal A. Melick, Supervising Engineer

Primary location of additional data:

- Location checkboxes: State Historic Preservation Office, Other State agency, etc.

Name of repository:

10. Geographical Data

Acreage of Property less than one acre

UTM References

(Place additional UTM references on a continuation sheet.)

1	1 6	3 0 2 4 7 5	3 6 2 7 6 4 0
	Zone	Easting	Northing
2			

3			
	Zone	Easting	Northing
4			

See continuation sheet

Verbal Boundary Description

(Describe the boundaries of the property on a continuation sheet.)

Boundary Justification

(Explain why the boundaries were selected on a continuation sheet.)

11. Form Prepared By

name/title Michelle Weaver, Architectural Historian

organization Mississippi Department of Archives & History date _____

street & number Post Office Box 571 telephone 601-359-6940

city or town Jackson state MS zip code 39205

Additional Documentation

Submit the following items with the completed form:

Continuation Sheets

Maps

A **USGS map** (7.5 or 15 minute series) indicating the property's location.

A **Sketch map** for historic districts and properties having large acreage or numerous resources.

Photographs

Representative **black and white photographs** of the property.

Additional items

(Check with the SHPO or FPO for any additional items)

Property Owner

(Complete this item at the request of SHPO or FPO.)

name City of Philadelphia

street & number 525 Main Street telephone _____

city or town Philadelphia state MS zip code 39350

Paperwork Reduction Act Statement: This information is being collected for applications to the National Register of Historic Places to nominate properties for listing or determine eligibility for listing, to list properties, and to amend existing listings. Response to this request is required to obtain a benefit in accordance with the National Historic Preservation Act, as amended (16 U.S.C. 470 et seq.).

Estimated Burden Statement: Public reporting burden for this form is estimated to average 18.1 hours per response including time for reviewing instructions, gathering and maintaining data, and completing and reviewing the form. Direct comments regarding this burden estimate or any aspect of this form to the Chief, Administrative Services Division, National Park Service, P.O. Box 37127, Washington, DC 20013-7127; and the Office of Management and Budget, Paperwork Reductions Projects (1024-0018), Washington, DC 20503.

United States Department of the Interior
National Park Service

National Register of Historic Places Continuation Sheet

(Old) U.S. Post Office-Philadelphia
Neshoba County, Mississippi

Section number 8 _____ Page 2 _____

The Old Philadelphia Post Office, now the Philadelphia Police Station, is locally significant for its role in Politics and Government and for its Architecture, Criterion A and C, respectively. One of many public buildings constructed in Mississippi under WPA legislation during the Great Depression, the building has been well maintained and has retained its architectural integrity.

ARCHITECTURE

The former Philadelphia Post Office, built in 1935-36, is a locally important work of mid-twentieth century public architecture, and is a well-executed and well-maintained example of the post offices built in Mississippi by the Federal government during the Great Depression. The former post office is the more intact of the two major early twentieth century governmental buildings in the community. The courthouse, dating from 1928, was significantly altered in renovations in 1969-70 and 1984 and other city buildings date from the 1960s or later. As a prominent architectural landmark in the central business district, it is the major historical representation of the federal government in Philadelphia.

The former U.S. Post Office in Philadelphia is an excellent example of the public buildings constructed under various New Deal programs in Mississippi communities during the 1930s and early 1940s, as discussed in the documentation for the multiple property submission, "Mississippi Post Offices Thematic Resources, 1931-41." Although the federal government has relinquished title to the building, the new owner has maintained a high degree of architectural integrity in the building.

POLITICS/GOVERNMENT

The former U.S. Post Office in Philadelphia is significant for being one of the thirty-two post offices constructed in Mississippi during the Great Depression with funding from one of the New Deal public building programs. As observed in the documentation for "Mississippi Post Offices Thematic Resources, 1931-1941," these buildings illustrate how the Federal government, through President Franklin Delano Roosevelt's leadership, transformed its role from one of "neutral arbiter to social welfare activist." Philadelphia, along with the rest of rural Mississippi, suffered greatly during the Great Depression. The construction of the post office in Philadelphia demonstrates how the Federal government sought to alleviate the economic hardships of an American community through work relief while also attempting to hearten and encourage that community through public beautification.

United States Department of the Interior
National Park Service

**National Register of Historic Places
Continuation Sheet**

(Old) U.S. Post Office-Philadelphia
Neshoba County, Mississippi

Section number ~~9 & 10~~ Page ~~3~~

9 - BIBLIOGRAPHICAL REFERENCES

Historic Resources Inventory Files. Historic Preservation Division, Mississippi
Department of Archives and History, Jackson.

Mississippi Landmark Files, Historic Preservation Division, Mississippi
Department of Archives and History, Jackson.

National Register Files, Post Offices Thematic Resources, Historic Preservation
Division, Mississippi Department of Archives and History, Jackson.

Site visit, February 23, 1995 by Michelle Weaver, Architectural Historian,
Mississippi Department of Archives and History, Jackson.

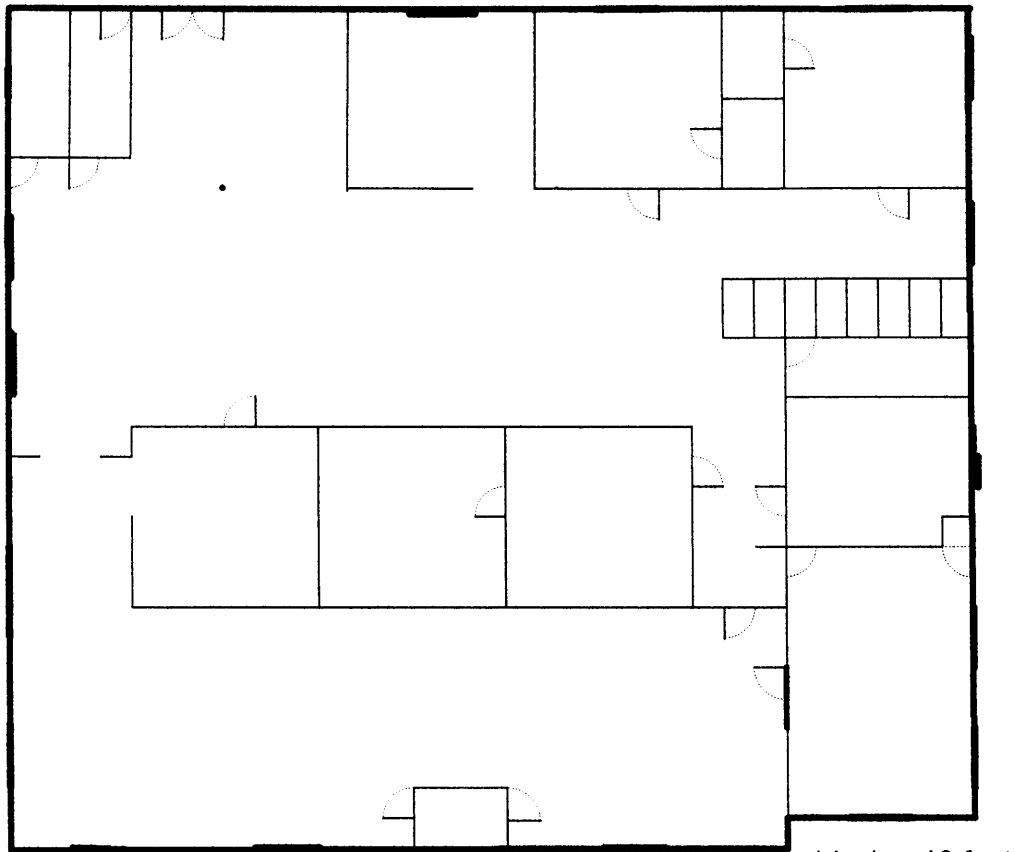
10 - GEOGRAPHICAL DATA

Verbal Boundary Description

Lots Nos. 3, 4, and 5, and one and one-half (1 1/2) feet of the north side of Lot
6, Block 24, according to Herrod's Survey of said City of Philadelphia,
Mississippi on file in the office of the Chancery Clerk of Neshoba County, MS.

Boundary Justification

The nominated property includes the entire parcel historically associated with
the former United States Post Office in Philadelphia, Mississippi.



1 inch = 10 feet

north



(Old) Philadelphia U.S. Post Office

523 Main Street

Philadelphia, Neshoba County

Mississippi



(Old) Philadelphia U.S. Post Office
573 Main Street

Philadelphia, Neshoba County, Mississippi

Michelle H. ...
February 1995

Mississippi Department of Archives and History

Facade, view to North

Photo 1 of 3



525

501, Philadelphia U.S. Post Office

523 Main Street

Philadelphia, Neshoba County, Mississippi

Michelle Weaver

February 1995

Mississippi Department of Archives and History

Detail of north entrance ...

Photo 2 of 3



55d) Philadelphia U.S. Post Office

523 Main Street

Philadelphia, Neshoba County, Mississippi

Michelle Weaver

February 1995

Mississippi Department of Archives and History

Interior lobby area, view to southeast

Photo 3 of 3