

United States Department of the Interior  
National Park Service

National Register of Historic Places  
Registration Form

This form is for use in nominating or requesting determinations for individual properties and districts. See instructions in *How to Complete the National Register of Historic Places Registration Form* (National Register Bulletin 16A). Complete each item by marking "x" in the appropriate box or by entering the information requested. If an item does not apply to the property being documented, enter "N/A" for "not applicable." For functions, architectural classification, materials, and areas of significance, enter only categories and subcategories from the instructions. Place additional entries and narrative items on continuation sheets (NPS Form 10-900a). Use a typewriter, word processor, or computer, to complete all items.

1. Name of Property

historic name Cain Hall

other names/site number Administration Building

2. Location

street & number Hinds Community College N/A not for publication

city or town Raymond N/A vicinity

state Mississippi code MS county Hinds code 049 zip code 39154

3. State/Federal Agency Certification

As the designated authority under the National Historic Preservation Act, as amended, I hereby certify that this  nomination  request for determination of eligibility meets the documentation standards for registering properties in the National Register of Historic Places and meets the procedural and professional requirements set forth in 36 CFR Part 60. In my opinion, the property  meets  does not meet the National Register criteria. I recommend that this property be considered significant  nationally  statewide  locally. ( See continuation sheet for additional comments.)

Kenneth H. D. Paul JAN. 29, 1997  
Signature of certifying official/Title Date

Deputy State Historic Preservation Officer  
State of Federal agency and bureau

In my opinion, the property  meets  does not meet the National Register criteria. ( See continuation sheet for additional comments.)

-  
Signature of commenting official/Title Date

\_\_\_\_\_  
State or Federal agency and bureau

4. National Park Service Certification

I hereby certify that the property is:	Signature of the Keeper	Date of Action
<input type="checkbox"/> entered in the National Register. <input type="checkbox"/> See continuation sheet.	_____	_____
<input type="checkbox"/> determined eligible for the National Register <input type="checkbox"/> See continuation sheet.	_____	_____
<input type="checkbox"/> determined not eligible for the National Register.	_____	_____
<input type="checkbox"/> removed from the National Register.	_____	_____
<input type="checkbox"/> other, (explain:) _____	_____	_____
_____	_____	_____
_____	_____	_____

Cain Hall  
Name of Property

Hinds Co., MS  
County and State

**5. Classification**

**Ownership of Property**  
(Check as many boxes as apply)

- private
- public-local
- public-State
- public-Federal

**Category of Property**  
(Check only one box)

- building(s)
- district
- site
- structure
- object

**Number of Resources within Property**  
(Do not include previously listed resources in the count.)

Contributing	Noncontributing	
<u>1</u>	<u>0</u>	buildings
		sites
		structures
		objects
<u>1</u>	<u>0</u>	Total

**Name of related multiple property listing**  
(Enter "N/A" if property is not part of a multiple property listing.)

Raymond Multiple Resource Area

**Number of contributing resources previously listed in the National Register**

0

**6. Function or Use**

**Historic Functions**  
(Enter categories from instructions)

Education/College

**Current Functions**  
(Enter categories from instructions)

Education/College

**7. Description**

**Architectural Classification**  
(Enter categories from instructions)

Classical Revival

**Materials**  
(Enter categories from instructions)

foundation brick  
walls brick  
roof asphalt  
other limestone

**Narrative Description**

(Describe the historic and current condition of the property on one or more continuation sheets.)

see continuation sheets

Cain Hall  
Name of Property

Hinds Co., MS  
County and State

### 8. Statement of Significance

#### Applicable National Register Criteria

(Mark "x" in one or more boxes for the criteria qualifying the property for National Register listing.)

- A** Property is associated with events that have made a significant contribution to the broad patterns of our history.
- B** Property is associated with the lives of persons significant in our past.
- C** Property embodies the distinctive characteristics of a type, period, or method of construction or represents the work of a master, or possesses high artistic values, or represents a significant and distinguishable entity whose components lack individual distinction.
- D** Property has yielded, or is likely to yield, information important in prehistory or history.

#### Criteria Considerations

(Mark "x" in all the boxes that apply.)

Property is:

- A** owned by a religious institution or used for religious purposes.
- B** removed from its original location.
- C** a birthplace or grave.
- D** a cemetery.
- E** a reconstructed building, object, or structure.
- F** a commemorative property.
- G** less than 50 years of age or achieved significance within the past 50 years.

#### Narrative Statement of Significance

(Explain the significance of the property on one or more continuation sheets.)

### 9. Major Bibliographical References

#### Bibliography

(Cite the books, articles, and other sources used in preparing this form on one or more continuation sheets.)

#### Previous documentation on file (NPS):

- preliminary determination of individual listing (36 CFR 67) has been requested
- previously listed in the National Register
- previously determined eligible by the National Register
- designated a National Historic Landmark
- recorded by Historic American Buildings Survey # \_\_\_\_\_
- recorded by Historic American Engineering Record # \_\_\_\_\_

#### Areas of Significance

(Enter categories from instructions)

Architecture

Education

#### Period of Significance

1926

#### Significant Dates

1926

#### Significant Person

(Complete if Criterion B is marked above)

N/A

#### Cultural Affiliation

N/A

#### Architect/Builder

James M. Spain

#### Primary location of additional data:

- State Historic Preservation Office
- Other State agency
- Federal agency
- Local government
- University
- Other

Name of repository:

Hinds Community College

Cain Hall  
Name of Property

Hinds Co., MS  
County and State

### 8. Statement of Significance

#### Applicable National Register Criteria

(Mark "x" in one or more boxes for the criteria qualifying the property for National Register listing.)

- A** Property is associated with events that have made a significant contribution to the broad patterns of our history.
- B** Property is associated with the lives of persons significant in our past.
- C** Property embodies the distinctive characteristics of a type, period, or method of construction or represents the work of a master, or possesses high artistic values, or represents a significant and distinguishable entity whose components lack individual distinction.
- D** Property has yielded, or is likely to yield, information important in prehistory or history.

#### Criteria Considerations

(Mark "x" in all the boxes that apply.)

Property is:

- A** owned by a religious institution or used for religious purposes.
- B** removed from its original location.
- C** a birthplace or grave.
- D** a cemetery.
- E** a reconstructed building, object, or structure.
- F** a commemorative property.
- G** less than 50 years of age or achieved significance within the past 50 years.

#### Narrative Statement of Significance

(Explain the significance of the property on one or more continuation sheets.)

### 9. Major Bibliographical References

#### Bibliography

(Cite the books, articles, and other sources used in preparing this form on one or more continuation sheets.)

#### Previous documentation on file (NPS):

- preliminary determination of individual listing (36 CFR 67) has been requested
- previously listed in the National Register
- previously determined eligible by the National Register
- designated a National Historic Landmark
- recorded by Historic American Buildings Survey # \_\_\_\_\_
- recorded by Historic American Engineering Record # \_\_\_\_\_

#### Areas of Significance

(Enter categories from instructions)

Architecture

Education

#### Period of Significance

1926

#### Significant Dates

1926

#### Significant Person

(Complete if Criterion B is marked above)

N/A

#### Cultural Affiliation

N/A

#### Architect/Builder

James M. Spain

#### Primary location of additional data:

- State Historic Preservation Office
- Other State agency
- Federal agency
- Local government
- University
- Other

Name of repository:

Hinds Community College

**United States Department of the Interior  
National Park Service**

**National Register of Historic Places  
Continuation Sheet**

Section number 7 Page 1

**Cain Hall, Raymond, Hinds County, MS**

---

**Narrative Description**

Cain Hall on the campus of Hinds County Community College in Raymond, Mississippi, is a Neo-Classical style public building. Cain Hall is being nominated under Criterion A for its contribution as an administrative and classroom building at one of Mississippi's earliest junior colleges and Criterion C as a well-preserved example of twentieth-century institutional architecture in the Neo-Classical style.

Cain Hall is a brick, two-story, H-plan building with a partial third story, that rests on a brick foundation. The entire building is highlighted with a limestone stringcourse and a brick parapet. Both the north facade and south elevation are characterized by two decorative brick projections that flank the ends of a centrally located, curved portico with six attenuated Corinthian columns, creating a symmetrical five-part design.

These brick projections have decorative limestone medallions and festoons. The narrow inner flanking walls are characterized by modern first-story doors with elaborate limestone medallions. Over these doors are two fixed eighteen-pane windows symmetrically placed. Modern ramps lead to these doors since they serve as stairwell entrances to the main building. The south facade of Cain Hall has eleven bays and is dominated by the two-story, centrally located, curved portico. The central block of Cain Hall contains rectangular six-over-six, double hung windows that flank interior twelve-over-twelve rectangular double hung windows on the first story with a centrally located modern glass double door. The double door is surrounded with limestone and has decorative consoles that support the above decorative balcony. The second story, similar to the first story, is characterized with rectangular six-over-six, double hung windows that flank interior twelve-over-twelve, arched, double hung windows. All windows have limestone lintels and sills with prominent keystones.

The east elevation is characterized by its twelve-bays of six-over-six double hung windows arranged into groups of four. The first and second-story windows are separated with recessed brick panels. On either side of these windows is a decorative limestone medallion with smaller six-over-six, double hung windows underneath.

The north elevation is identical to the south facade.

**United States Department of the Interior  
National Park Service**

**National Register of Historic Places  
Continuation Sheet**

Section number   7   Page   2  

**Cain Hall, Raymond, Hinds County, MS**

---

**Narrative Description (continued)**

The west elevation was once identical to the east elevation; however, many windows are now filled-in with bricks. All the first-story windows are filled-in, and a structural change has occurred in the central group of three that has disturbed the original rhythmical scheme. On the second story, only the first two windows in the first and third group of four remain as intact six-over-six double hung. All other second story windows are filled-in. The smaller six-over-six, double hung windows that originally flanked the twelve bays are still intact with their crowning limestone medallions.

In 1977, the interior of the Cain Hall underwent necessary alterations in order to accommodate the growing student body. The Auditorium is well preserved and encompasses the entire west side of the building allowing for only half of the interior space to be used as classrooms. The Auditorium has not been altered from its historic layout, although modern lighting and chairs have replaced historic features.

Entrances from the north and south portico open to a central corridor, which has a staircase at each end. Opening off the corridor to the west is the auditorium, which occupies the entire western half of the building. On the east side of the central corridor is a central transverse corridor, with rooms on either side. The transverse corridor leads to a T-intersection with a third corridor, which runs north-south. Along the east side of this corridor is one further range of rooms, with a stairwell at each end.

The upper story has a much more complex plan. On the west is the upper part of the auditorium. On the east a pair of hallways extend along the north and south walls, illuminated by large, round-arched windows. Between these two hallways is a classroom-laboratory area. At the eastern end, the two hallways connect with a north-south corridor in the same position as that on the lower story. It, also, has a row of classrooms along its east side and stairwells at each end.

In the center of the building is a partial third story, with offices which are illuminated by small attic windows in the porticos.

United States Department of the Interior  
National Park Service

# National Register of Historic Places Continuation Sheet

Section number 8 Page 3

Cain Hall, Raymond, Hinds County, MS

---

## Statement of Significance

Cain Hall at the Hinds County Community College campus in Raymond, Hinds County, Mississippi is a significant local and statewide representation of the development of public junior colleges and community colleges in Mississippi. Cain Hall is being nominated under Criterion A for its contribution as an administrative and classroom building on one of Mississippi's earliest junior colleges and Criterion C as a well-preserved example of twentieth-century institutional architecture in the Neo-Classical style.

Cain Hall was built in 1926 to house the auditorium, library, general academic classrooms, and offices for the president and business manager. Originally called the Administration Building, its name was changed in 1982 to honor the former college president George Judson Cain.

The history of Hinds County Community College began with the 1908 Act of the Mississippi Legislature that provided County Schools of Agriculture for each rural county in Mississippi. The task of establishing an individual Agriculture High School in Hinds County was initiated with bids from Clinton, Edwards, Utica, and Raymond. The city of Raymond was chosen as the location for this new school in May 1916, since city officials issued \$75,000 in bonds to erect and equip three brick buildings and a principal's home. The campus site was located on land formerly owned by Mr. J.R. Eggleston, Captain of the *C.S.S. Merrimac* of *Merrimac* and *Monitor* fame. The first campus buildings included a women's and men's dormitory and administration building. From this building phase, only Main Hall, a men's dormitory, remains on the campus (NR-7/17/86).

The school's population in 1917 was 117 students and eight faculty members and the school year lasted thirty-six weeks. The curriculum of the Agricultural High School was a mixture of academics and manual labor. All students were able to earn hours in mathematics, science, and commercial work. The males were required to take four years of agriculture and two years of manual training. Female students were required to take four years of home economics and had the option of participating in a rural teachers' training program.

**United States Department of the Interior  
National Park Service**

**National Register of Historic Places  
Continuation Sheet**

Section number 8 Page 4

**Cain Hall, Raymond, Hinds County, MS**

---

**Statement of Significance (continued)**

The growing interest in rural education was demonstrated in the fact that by 1924, fifty-one counties had established agricultural high schools with an enrollment of 7,249 students. This success brought about a movement to incorporate college credit classes into the curriculum. This movement, led mainly by Pearl River Agricultural High School and Hinds Agricultural High School, resulted in the 1922 Junior College Law passed by the Mississippi Legislature. In 1922, Hinds Agricultural High School dropped its ninth grade coursework and created one year of college credit.

The emphasis at Hinds Agricultural High School was transformed as more students demanded college credit coursework. This demand led to an institutional transformation in 1926, as the school added a second year of college credit and officially became Hinds Junior College. With this change, the campus needed to provide new facilities to house its growing academic body. Thus, the college was allocated \$168,000 to built an Administration Building, now called Cain Hall. The building was designed by Jackson architect, James M. Spain. This Neo-Classical building became the centerpiece of the campus and continues to dominate the college's landscape.

Cain Hall is an excellent example of Neo-Classical architecture on a college campus. This architectural style was very popular throughout Mississippi in the early twentieth century and common for public buildings. The elaborate curved portico of Cain Hall influenced later buildings on the campus including the (new) Administration Building (1951) and Harris-Patrick Hall (1951).

Cain Hall remains the centerpiece of Hinds Community College in Raymond, Mississippi. Although renovations have occurred to the building's interior, its overall integrity remains very high.



**United States Department of the Interior  
National Park Service**

**National Register of Historic Places  
Continuation Sheet**

Section number 9 & 10 Page 5

**Cain Hall, Raymond, Hinds County, MS**

---

**Major Bibliographical References**

\_\_\_\_\_. "The History of Hinds Junior College." Hinds County Gazette 1946.

Mississippi Department of Archives and History, Jackson. Inventory File. Hinds County.  
Hinds County Community College.

Sowell, Ralph. G.M. McLendon Story. Raymond, MS: Hinds Junior College, 1965.

Young, James B., and James M. Ewing. The Mississippi Junior College Story. Jackson,  
MS: University Press of Mississippi, 1978.

**Geographical Data**

Verbal Boundary Description

The property is a rectangular parcel measuring 250 x 125 feet, whose sides are parallel to the walls of the building and is centered on the centerpoint of the building.

Verbal Boundary Justification

The nominated property includes the entire parcel historically associated with Cain Hall.

**United States Department of the Interior  
National Park Service**

**National Register of Historic Places  
Continuation Sheet**

Section number Photos Page 6

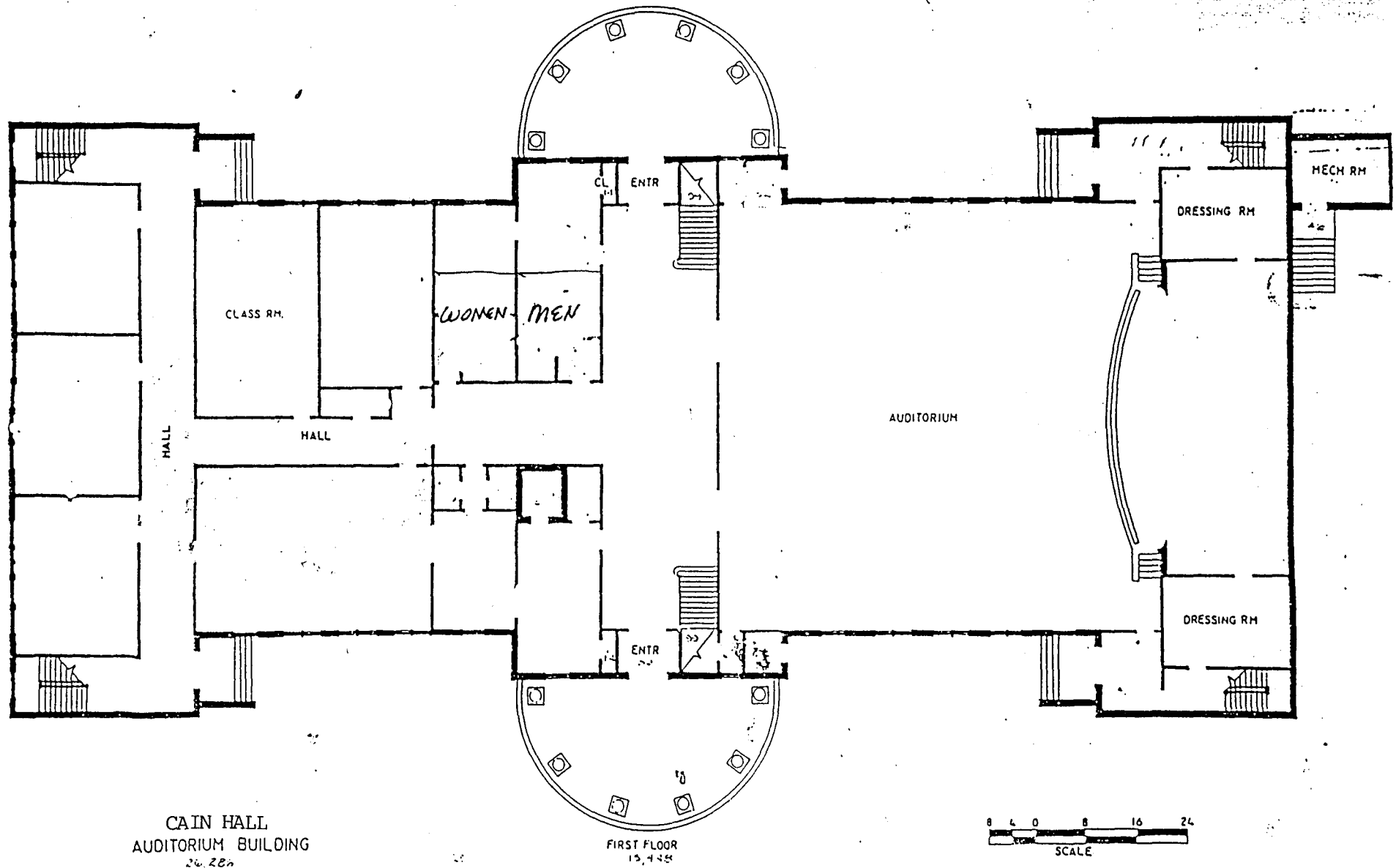
**Cain Hall, Raymond, Hinds County, MS**

---

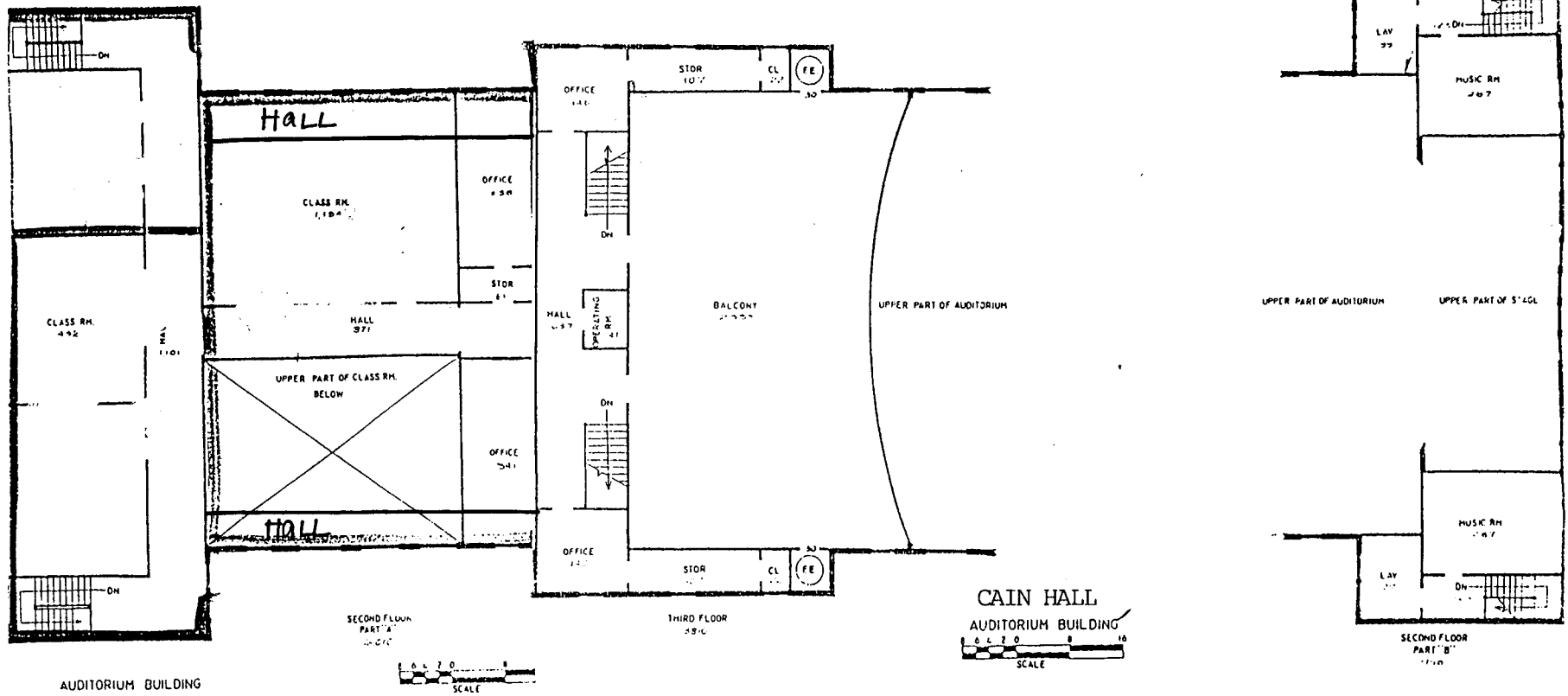
1. Cain Hall
2. Raymond, Hinds Co., MS
3. Harrison Lea Stamm
4. September 1996
5. Mississippi Department of Archives and History (MDAH)

- |          |   |
|----------|---|
| Photo 1  | Facade, south                               |
| Photo 2  | Side door detail, south facade              |
| Photo 3  | Detail of south facade, view to east        |
| Photo 4  | South facade, view to the west              |
| Photo 5  | East elevation, view to the north           |
| Photo 6  | North elevation, view to the west           |
| Photo 7  | West elevation, view to the south           |
| Photo 8  | Interior, first floor hallway, view to east |
| Photo 9  | Interior Auditorium, view to west           |
| Photo 10 | Interior second story, view to east         |
| Photo 11 | Interior second story detail, view to east  |

Cain Hall, Raymond, Hinds County, MS



Cain Hall, Raymond, Hinds County, MS



AUDITORIUM BUILDING

SECOND FLOOR PART A

THIRD FLOOR

CAIN HALL  
AUDITORIUM BUILDING

SECOND FLOOR PART B

United States Department of the Interior  
National Park Service

MAR 25

# National Register of Historic Places Continuation Sheet

Section number \_\_\_\_\_ Page \_\_\_\_\_

### SUPPLEMENTARY LISTING RECORD

NRIS Reference Number: 97000214


Date Listed: 3/10/97

Cain Hall  
Property Name

Hinds            MISSISSIPPI  
County          State

N/A  
Multiple Name

-----  
This property is listed in the National Register of Historic Places in accordance with the attached nomination documentation subject to the following exceptions, exclusions, or amendments, notwithstanding the National Park Service certification included in the nomination documentation.

*for*   
Signature of the Keeper

3/12/97  
Date of Action

=====  
Amended Items in Nomination:

Section No. 3

This nomination is amended to show that the SHPO recommends that the property be considered significant at the state level.

This information was provided by the Mississippi SHPO.

**DISTRIBUTION:**

- National Register property file
- Nominating Authority (without nomination attachment)



Cain Hall

Raymond, Hinds Co, MS

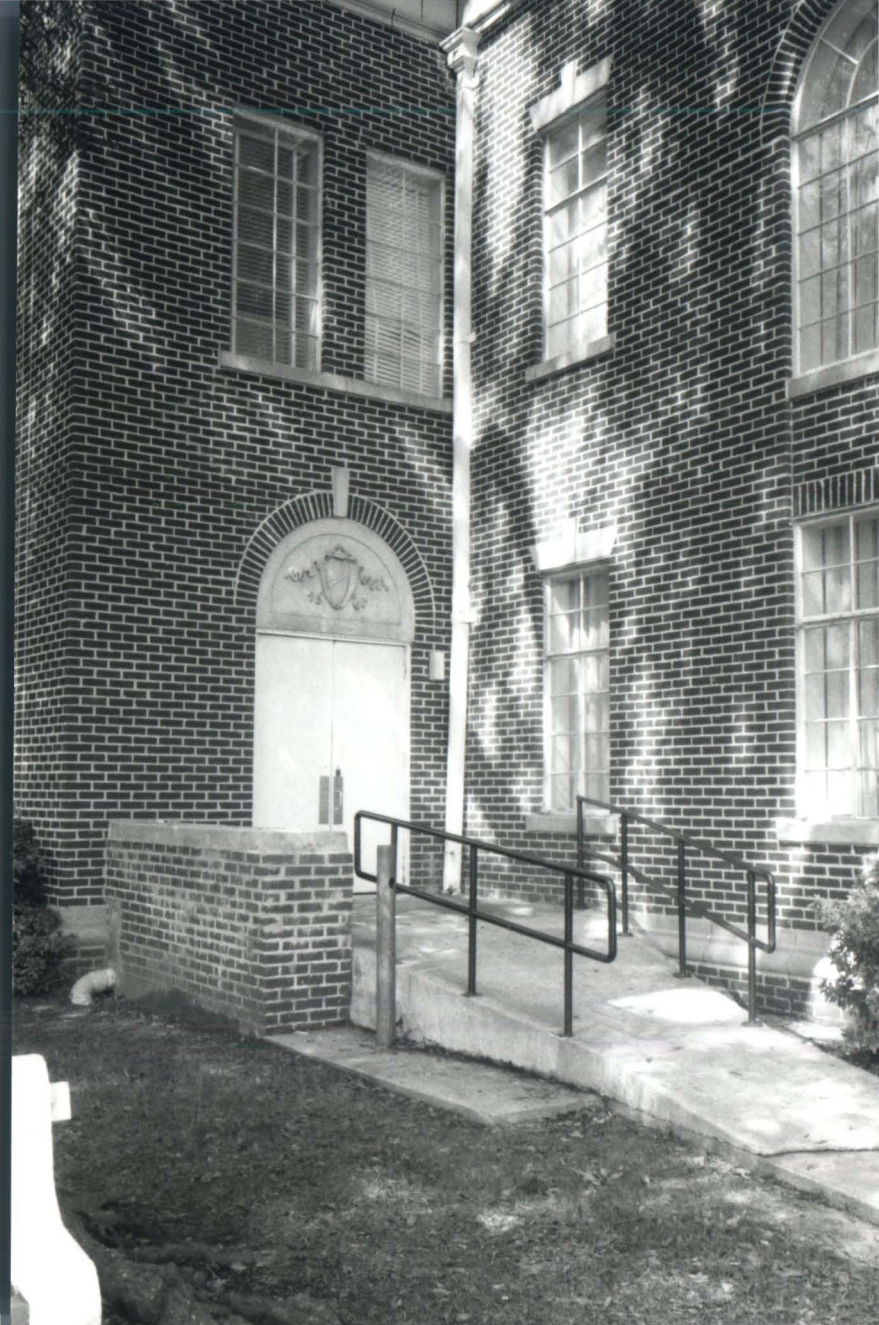
Harrison Lea Stamm

September 1996

MBAH

Facade, <sup>150012 N</sup> South,

lot 11





Cain Hall

Raymond, Hinds Co., MS

Harrison Lea Stamm

September 1996

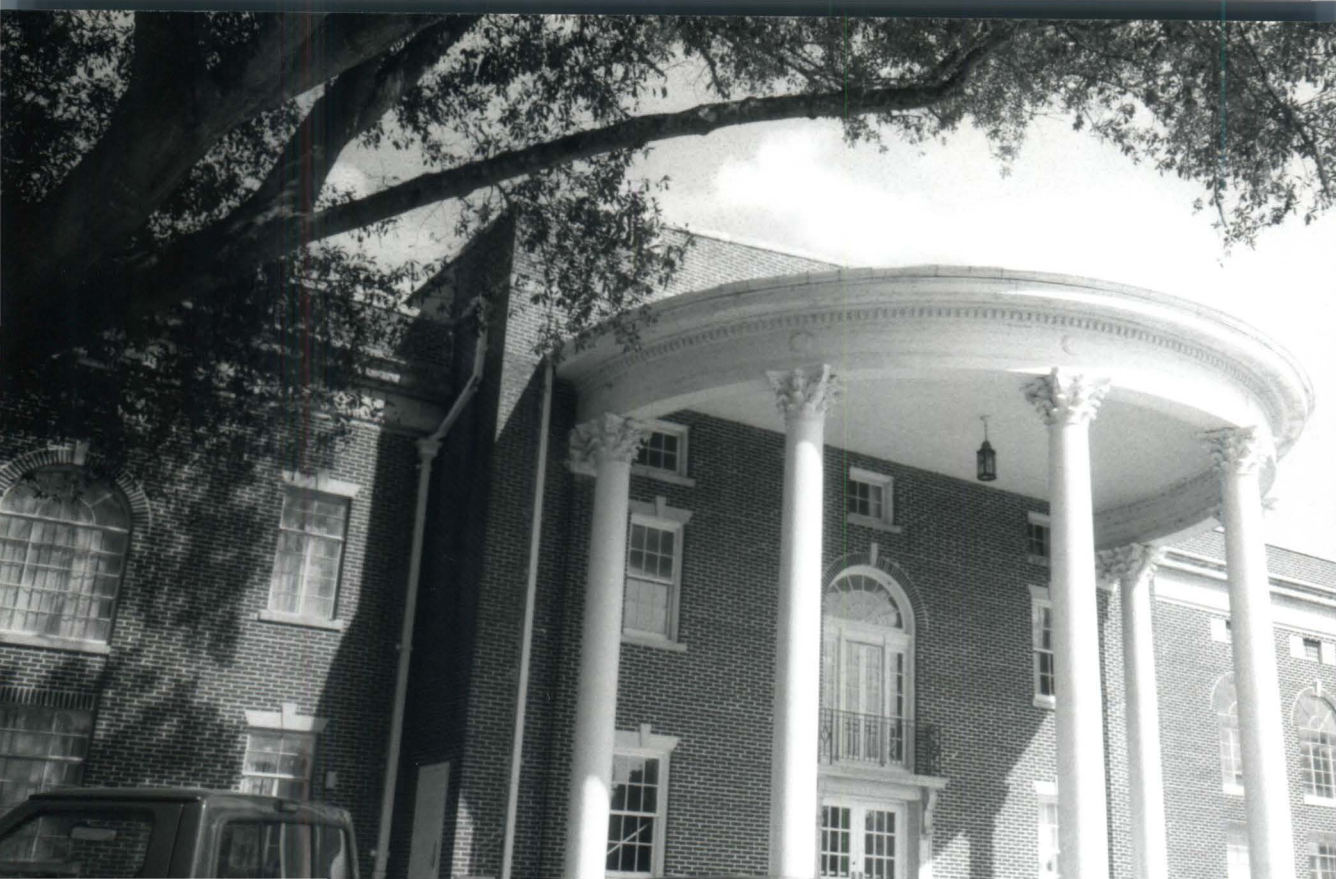
1630211 NN

MDAH

side door detail, ~~south~~

South facade

2 of 11



Cain Hall

Raymond, Hinds Co., MS

Harrison Lee Stamm

September 1996

MDAH

Detail of South facade, view to east

3 of 11



Cann Hall  
Raymond, Hinds Co., MS  
Harrison Lee Stamm  
September 1996

MDAH

South facade, view to the west

4 of 11



Cain Hall

Raymond, Hinds Co., MS  
Harrison Lee Stamm  
September 1996

MDA 4

1800212 N-1

east elevation, view to the NORTH

5 of 11





Cain Hall

Raymond, Hinds Co., MS

Harrison Lee Stamm  
September 1996

MPA 74

1830112 N-3

north elevation, view to the west

6 ~~11~~ 11



Cain Hall

Raymond, Hinds Co., MS  
Harrison Lee Stamm  
September 1996

MDAH

1850211 N-1

West elevation, view to the south

7 of 11



Cain Hall

Raymond, Hinds Co., MS  
Harrison Lea Stamm  
September 1996

MDA H

1850211 N-1

interior, first floor Hallway, view to west-east

8 of 11



Cain Hall

Raymond Hinds Co, MS

Harrison Lee Stamm

September 1996

MPA ET

interior Auditorium view to west

1850212 N-1

9 of 11





Cam Hall

Raymond Hinde Co., MS  
~~Harrison~~ <sup>Lee</sup> Staman  
September 1996

MDAH

1850212 NN

interior second story, view to east

10 of 11



Cain Hall

Raymond Hinds Co., n.  
Harrison Lea Stamm  
September 1996

MBATH

1830212 N-1

interior second story detail, view to <sup>east</sup>~~south~~

11 of 11