

UNITED STATES DEPARTMENT OF THE INTERIOR  
NATIONAL PARK SERVICE

**NATIONAL REGISTER OF HISTORIC PLACES  
INVENTORY -- NOMINATION FORM**

FOR NPS USE ONLY	
RECEIVED	28 AUG 1979
DATE ENTERED	DEC 19 1979

CONTINUATION SHEET

ITEM NUMBER

7

PAGE

8

7 - DESCRIPTION

MERIDIAN URBAN CENTER HISTORIC DISTRICT

The Meridian Urban Center Historic District, located in a valley between rolling hills, follows railroad tracks running along the valley's northern edge. The thirteen-block area, occupying approximately 23 acres, is comprised of 126 structures, principally commercial Italianate row buildings.

Boundaries of the district correspond closely with those of the fire district created in 1872. At that time 25th Avenue was the principal north-south axis, and streets paralleling the tracks, Front, 4th, and 5th, were beginning to develop. The buildings within the long rows of these streets are sympathetic to their neighboring buildings in style, scale, materials, and roof lines, particularly in the blocks closest to the tracks. This cohesiveness creates a distinctly urban sense of place and a definite city center that is rare in a state of rural towns. Such a profusion of row buildings is even more remarkable considering the large pivotal structures of Italianate (no. 55), Second Empire (no. 44), Renaissance Revival (no. 49), and High Victorian Gothic (nos. 59, 64) styles found on focal corners through out the district.

Within the district are but eight intrusions, and the detracting of three of these is mitigated by their locations along the district's edges. Many of the structures have altered first floors, but removal of applied metal screens would restore facade integrity. Revitalization is the district's pressing need. A great number of the buildings are either vacant or being used as warehouses, and deterioration from neglect will soon be a serious problem. One building has already been rehabilitated, and work is in progress and planned for several others.

UNITED STATES DEPARTMENT OF THE INTERIOR  
NATIONAL PARK SERVICE

**NATIONAL REGISTER OF HISTORIC PLACES  
INVENTORY -- NOMINATION FORM**

FOR NPS USE ONLY	
RECEIVED	28 AUG 1979
DATE ENTERED	DEC 9 1979

CONTINUATION SHEET

ITEM NUMBER 7 PAGE 9

7 - DESCRIPTION

Buildings Contributing to the Character of the District

1. The Meridian Hotel (2119 Front St.) 1907. Five-story, twelve-by-seven-bay brick building with two-story rear wing. Projecting metal cornice between first and second floors. String courses between upper floors. Entablature has plain frieze; overhanging metal cornice with brackets.
2. 102-22nd. Ave. Ca. 1885. Two-story, three-bay brick with tan paint in short row. Upper bays slightly recessed between pilaster strips; short parapet with projecting brick denticulated courses at cornice.
3. 100-22nd. Ave. Ca. 1885. Two-story, three-bay brick with tan paint at end of short row. Segmental-arch brick dripstones over enclosed windows connect with corbeled impost course. Inset brick panel in frieze with corbeled vertical side panels; stepped parapet on south facade.
4. 2201 Front St. Ca. 1925. Three-story red-brick, six bays by thirteen. Brick pilaster strips define bays, which contain paired windows. Stone flat arches over third-floor windows; frieze area painted black.
5. F. A. Hulett and Son (2227 Front St.) Ca. 1926. Five-story brick row building; front facade painted green. Three bays contain triple windows between pilaster strips, which are topped by battlementlike caps and connected by parapet walls. First-floor canopy has pressed tin ceiling.
6. 2305 Front St. Ca. 1900, 1906. Two-story brick row building with flat roof. Four bays slightly recessed between pilaster strips, which support frieze with painted stretchers forming diamond patterns. Buildings in this part of the block were rebuilt after 1906 tornado.
7. 2309 Front St. Ca. 1898, 1906. Three-story brick row with flat roof. Upper floors have three segmental-arch bays; projecting course repeats the window arches. Center bays are wider than exterior bays and originally contained paired double-hung windows.
8. Tom Lyle Grocery Co. (2311 Front St.) Ca. 1895, 1906. Three-story brick row building. Two bays, slightly recessed between pilaster strips with raised brick panels. Each bay contains paired center windows flanked by single windows, all windows having stone lintels with incised keystones.
9. Tom Lyle Grocery Grocery Co. (2315 Front St.) 1899, 1906. Three-story brick row building with flat roof. Wide pilaster strips frame slightly recessed bays. End pilasters are quoined. Entrance bays defined by fluted pilasters; original sign board visible below paint.

UNITED STATES DEPARTMENT OF THE INTERIOR  
NATIONAL PARK SERVICE

**NATIONAL REGISTER OF HISTORIC PLACES  
INVENTORY -- NOMINATION FORM**

FOR NPS USE ONLY	
RECEIVED	28 AUG 1979
DATE ENTERED	18 1979

CONTINUATION SHEET

ITEM NUMBER 7 PAGE 10

7 - DESCRIPTION

10. 2323 Front St. Ca. 1906. Two-story brick row building with stuccoed facade. Three bays at second-floor level, small center bay projects slightly. All windows are segmentally arched. Large stylized dentils and molded cornice in the entablature.
11. Armour and Co. (2327 Front St.). 1892. Outstanding district building, three-story brick with stuccoed facade. Three bays, center bay smaller and emphasized by framing engaged columns which rise to support bracketed cornice and pediment in parapet. Exterior rusticated piers and paneled cast-iron columns on the ground floor; second floor bays have segmental-arch windows framed by pilasters with stepped capitals. Third-floor windows are round arches supported on pilasters.
12. 2329 Front St. Ca. 1900. Two-story, three-bay brick row building, front facade stuccoed and scored. String course between floors; tall frieze with raised brick panels.
13. 2100 Front St. Ca. 1908. One-story corner building, brick common bond painted white. Parapet has long steps on side facade.
14. 2102-2104 Front St. Ca. 1908. Two-story brick row building, first floor modified and concealed by awning. Three bays at second floor have paired six-over-one windows with stone lintels. Simple brick denticulated cornice.
15. 2106 Front St. Ca. 1908. Two-story row building, brick common bond. Almost identical to preceding building (14), but without stone lintels over second floor bays.
16. 2108 Front St. Ca. 1908. Two-story brick row, facade painted green. Two second-floor bays contain paired one-over-one windows resting on projecting brick sills.
17. 2112 Front St. Ca. 1908. One-story brick row, inset brick panel frieze. "Colonial Grocery Co." visible on short parapet. Rear elevation has three segmental-arch bays.
18. 2114 Front St. Ca. 1908. One-story brick row, recessed center door flanked by windows with paneled aprons. Entablature obscured by applied metal facade supporting awning.
19. 2116 Front St. Ca. 1908. Front facade identical to 18. Rear alley elevation has tall segmental arch flanked by paired segmental-arch windows.

UNITED STATES DEPARTMENT OF THE INTERIOR  
NATIONAL PARK SERVICE

**NATIONAL REGISTER OF HISTORIC PLACES  
INVENTORY -- NOMINATION FORM**

FOR NPS USE ONLY

RECEIVED 28 AUG 1979

DATE ENTERED

CONTINUATION SHEET

ITEM NUMBER 7 PAGE 11

7 - DESCRIPTION

20. 2118 Front St. Ca. 1880. Two-story brick row building painted in horizontal strips (brown, white and red brick). Elongated pedimentlike treatment above double-leaf entrance with five-bay transom. Second floor has five segmental-arch bays with brick impost and archivolt trim. Tall decorative corbeled parapet, stepped on side facade.
21. 200-22nd Ave. Ca. 1870. Two-story corner building, stuccoed-and-scored brick. Eight bays over four on front facade, six over three on side elevation. Second-floor windows are one-over-one in round arches with hoodmolds and label stops. Simple architrave, plain frieze, molded cornice.
22. Grand Avenue Hotel (201-22nd Ave.). Ca. 1907. Three-story brick corner building; stuccoed and scored. Five bays by seven, although originally six bays by eight. All windows rest on projecting sills and have cornices supported by consoles. Architrave-cornice below parapet, stepped on Front St. facade. Remarkable interior features include pressed tin walls and ceilings throughout upper floors, and an open-string staircase with elaborately turned balusters (from the 1907 remodeling).
23. 2206 Front St. Ca. 1870. Two-story brick row painted gold, low gable roof concealed by parapet. Three lower bays are round arched with archivolts, upper bays are segmental arches with pronounced archivolt trim connected to molded impost course. Corbel tables in frieze.
24. 2208 Front St. Ca. 1870. Two-story, four-bay brick row, first floor stuccoed and scored. Lower bays are round arches (one remaining fanlight) arcaded on cast-iron columns in antis. Brick quoins and pilaster strips frame upper segmental-arch bays, which have decorated stone hoodmolds with keystones and label stops. Battlemented parapet now filled with concrete.
25. Marks, Lichtenstein & Co. (2210-2212 Front St.). Ca. 1875. Two-story brick row; eight flat-arch bays on second level; ground-floor bays originally segmental arches carried on cast-iron columns. Stylized brick pilasters between upper bays originally supported stone hoodmolds, which coupled the interior windows. Flat-roofed entrance porch with balustrade, cornice with paired brackets, and hipped roof with balustraded deck were additional original features no longer extant.
26. 2214 Front St. Ca. 1870. Two-story, four-bay brick row, very similar to 24. Upper windows are segmentally arched with molded brick hoodmolds and label stops. Corbel tables in entablature.

UNITED STATES DEPARTMENT OF THE INTERIOR  
NATIONAL PARK SERVICE

**NATIONAL REGISTER OF HISTORIC PLACES  
INVENTORY -- NOMINATION FORM**

FOR NPS USE ONLY	
RECEIVED	28 AUG 1979
DATE ENTERED	DEC 18 1979

CONTINUATION SHEET

ITEM NUMBER 7 PAGE 12

7 - DESCRIPTION

27. 2216-2218 Front St. Ca. 1870. Three-story brick row with brick veneer facade. 1960s fire damaged facade and necessitated the replacement. Added third floor disrupts uniform cornice height of the block. Photographic evidence reveals two buildings at this location.
28. Charles Silverstein & Co., Jewelers (2222 Front St.). Ca. 1875. Two-story brick corner building, stuccoed and scored, painted water table. Front elevation shows five bays over three, side facade nine bays over nine, all segmentally arched. Lower bays now enclosed, but corbeled archivolt trim and molded impost course remains and is repeated above second-floor windows. Architrave-cornice between floors; overhanging cornice with a few remaining brackets topped by battlemented parapet.
29. European House (2300 Front St.). Ca. 1870. Two-story corner row building, brick common bond. Three bays by eight; projecting headers form dripstones over segmental arches, now enclosed by louvered shutters. Molded belt course, corbeled parapet with battlement like chimneys. Sandblasted and rehabilitated.
30. 2302 Front St. Ca. 1870. Two-story row, brick common bond painted white. First floor altered, three segmental-arch windows with shutters above. Belt course at architrave level; corbeled cornice.
31. 2304 Front St. Ca. 1870. Unusual two-story, two-bay row building with stuccoed facade. Transom above altered entrance, two upper segmental-arch windows, and slightly projecting cornice are remaining features.
32. 2306 Front St. Ca. 1870. Two-story, three-bay row building with stuccoed facade. Piers between first-floor bays; cornice continued from adjoining building (31).
33. 2308 Front St. Ca. 1870. Two-story, four-bay brick row; upper floor brick veneer. Projecting cornice with dentils separates first and second floors.
34. Chalk's Sewing Machine Depot (2310 Front St.). Ca. 1870. Two-story three-bay brick row building, facade stuccoed. Double-leaf entrance doors have bottom-raised panels and are framed by fluted cast-iron pilasters. Three round-arch upper bays filled with concrete. Belt course; projecting cornice with dentils.

UNITED STATES DEPARTMENT OF THE INTERIOR  
NATIONAL PARK SERVICE

**NATIONAL REGISTER OF HISTORIC PLACES  
INVENTORY -- NOMINATION FORM**

<b>FOR NPS USE ONLY</b>	
RECEIVED	28 AUG 1979
DATE ENTERED	DEC 18 1979

CONTINUATION SHEET

ITEM NUMBER 7 PAGE 13

7 - DESCRIPTION

35. 2312-2314 Front St. Ca. 1870. Two-story five-bay brick row, stuccoed and scored. Lower bays divided by piers, which carry semicircular arches with archivolts, keystones, and label stops. Belt course and entablature continued from adjoining building (34).
36. 2316-2318 Front St. Ca. 1870. Two-story three-bay brick row. Entablature between first and second floors has projecting cornice with dentils supported by brick-paneled pilaster strips. Coupled windows with stone lintels in upper bays. Raised brick panels in frieze; corbeled cornice.
37. Meridian Star Printing House (2320 Front St.). Ca. 1875. Two-story, four-bay brick row. Exterior first floor bays are semicircular arches with archivolts, keystones, and label stops, and contain large fanlighted windows with paneled aprons. Slightly projecting flat arch center bay creates unusual entrance as it is topped by two incomplete archivolts.
38. A. Gressett Music House (2322 Front St.). Ca. 1875. Two-story four-bay row building with stuccoed facade. Metal awning support hides lower bays, which are all round arched. Center bays are taller and semicircular with fanlights. Large stylized dentils in entablature; molded cornice.
39. 2324 Front St. Ca. 1870. Two-story four-bay brick row building, painted white. All bays are round arched and have hoodmolds with keystones and label stops. Decorative brick work includes quoining on second floor, inset frieze panels, and corbeled architrave and cornice.
40. 2326 Front St. Ca. 1870. Two-story three-bay brick row building. First floor severely altered. Three second-floor bays have flat-topped arches and are separated by pilaster strips, which support entablature with corbel tables.
41. 2328 Front St. Ca. 1870. Two-story three-bay brick with stuccoed facade. Semi-circular lower bays with fanlights; upper bays have flat-topped arches. Belt course supports pilasters with stepped caps, which frame each bay and rise through corbel-tabled entablature.
42. 2330 Front St. Ca. 1870. Very similar to 41. Ground floor bays were originally segmental arches, second-floor center bay has coupled windows.
43. 2332-2334 Front St. Ca. 1870. Two-story brick, painted white, at corner of the row. First floor severely altered. Three bays by eight at second floor; segmental arches all enclosed. Quoined sides; giant stylized corbel tables in frieze.

UNITED STATES DEPARTMENT OF THE INTERIOR  
NATIONAL PARK SERVICE

**NATIONAL REGISTER OF HISTORIC PLACES  
INVENTORY -- NOMINATION FORM**

<b>FOR NPS USE ONLY</b>	
RECEIVED	<b>28 AUG 1979</b>
DATE ENTERED	<b>DEC 18 1979</b>

CONTINUATION SHEET

ITEM NUMBER 7 PAGE 14

7 - DESCRIPTION

44. Baum Block (2500 Front St.). 1882. Impressive focal building of the district. 1906 tornado destroyed original mansard roof; overall design marred by its flat-roofed third floor replacement. Brick, painted white, five bays by six. Narrow center bay on front facade flanked by progressively larger bays with segmental-arch fenestration. Outstanding features include freestanding cast-iron columns, decorated stone hoodmolds, and full entablature with paneled frieze and bracketed cornice with dentils between first and second floors.
45. Weidmann's (208-210 - 22nd Ave.). Ca. 1880. Two-story brick row building with applied "Bavarian" facade, ca. 1965. 1888 directory illustrates two buildings at this location, each with four bays.
46. St. Elmo Hotel (212-22nd Ave.). Ca. 1880. Two-story brick row with stuccoed facade. Originally three bays by eight; front facade now incorporates an undercut gallery supported by square cast-iron columns. Adapted for banking purposes ca. 1970; stucco hoodmolds with label stops are remaining details.
47. 213-22nd Ave. Ca. 1875. Two-story brick with flat roof, originally rear wing of hotel (22). Modern alterations include plate-glass windows on 22nd Ave. facade and a metal screen, which hides entire second floor.
48. 2205-4th St. Ca. 1910. Three-story brick building connected with 47. Remaining details visible over metal screen are giant pilasters which frame three segmental-arch bays (now enclosed), and have consoles, enriched with acanthus leaves, serving as keystones.
49. Masonic Temple Building (2215-2225 - 4th St.). 1901. Important focal building of the district. Three-story brick corner, fifteen bays by seven. Five bays at each end project slightly; rusticated quoined piers frame first and fifth bays. Southwest third of ground floor, which includes side elevation, is arcaded, stuccoed, and scored. Round arches with hoodmolds and keystones rise through upper floors and are framed by Corinthian pilasters; central section arcaded on pilasters. Entablature frieze decorated with festoons (some missing); overhanging bracketed cornice; parapet originally balustraded.
50. Southern Bank Building (2301-4th St.). 1901. Two-story brick corner with flat roof; stuccoed and scored. Originally nine bays by eight; five bays by seven remain. Corner of building, originally supported by a Tuscan column, has been cut back to form angled entrance. Nine-bay side facade originally arcaded on piers; one remaining arch.

UNITED STATES DEPARTMENT OF THE INTERIOR  
NATIONAL PARK SERVICE

**NATIONAL REGISTER OF HISTORIC PLACES  
INVENTORY -- NOMINATION FORM**

FOR NPS USE ONLY	
RECEIVED	28 AUG 1979
DATE ENTERED	DEC 18 1979

CONTINUATION SHEET

ITEM NUMBER

7

PAGE

15

7 - DESCRIPTION

51. 2305-2307 - 4th St. Ca. 1885. Two-story four-bay brick row building; second floor stuccoed. Recessed central entrance has center cast-iron column, paneled pilasters at second and fourth bays.
52. 2309-4th St. Ca. 1885. Two-story two-bay brick row; first floor stuccoed and scored, second floor plastered. Bracketed cornice between floors. Upper floor altered; peculiar bay window does not project beyond the facade.
53. Meridian National Bank, Meridian Board of Trade (2311-4th St.). Ca. 1882. Ca. 1910. Classic Revival facade applied to earlier Italianate bank building. Three-story three-bay stuccoed brick. Corner piers support classical entablature with triglyphs and projecting cornice between first and second floors. Corinthian pilasters between upper bays. Paired corner brackets support overhanging denticulated cornice topped by parapet.
54. 2315-2317 - 4th St. Ca. 1885. Three two-story brick row building facades having been combined into one continuous concrete facade.
55. 2319-4th St. Ca. 1900. Two-story brick row, painted green. Four irregularly spaced bays; second floor flat-arch windows rest on projecting sills; short pedimented parapet.
56. 2325-4th St. Ca. 1890. Two-story three-bay brick row with flat roof. Central recessed entrance, framed by turned cast-iron columns in antis, has pressed tin ceiling. Raised brick panel in frieze; corbel tables below short parapet.
57. 2327-2329 - 4th St. Ca. 1885. Two-story three-bay row building; brick common bond painted silver. First floor altered; three segmental-arch windows on second floor. Entablature has projecting stretcher course and short corbel tables.
58. 2331-2333 - 4th St. Ca. 1880. Ca. 1930. Two-story brick corner building, six bays by six. Brick veneer on earlier three-story building. Corner piers with stepped capitals and pilasters support entablature with projecting cornice and paired brackets between first and second floors.
59. Dumont Building (401-22nd Ave.). 1889. Important pivotal district structure. High Victorian Gothic corner building with lantern-and-dome tower. Three-story brick with parapet, nine bays by three. Front facade has slightly projecting off-center pavilion crowned by flat-topped gable, which projects above the parapet. Side facade bays surmounted by pinnacled pediment. Coat of gray paint hides any decorative constructional color.



UNITED STATES DEPARTMENT OF THE INTERIOR  
NATIONAL PARK SERVICE

**NATIONAL REGISTER OF HISTORIC PLACES  
INVENTORY -- NOMINATION FORM**

<b>FOR NPS USE ONLY</b>	
RECEIVED	28 AUG 1979
DATE ENTERED	DEC 18 1979

CONTINUATION SHEET

ITEM NUMBER 7 PAGE 16

7 - DESCRIPTION

60. 2202-4th St. Ca. 1900. Three-story two-bay brick row; parapeted sides conceal roof line. First floor altered. Triple double-hung windows in upper bays framed by Corinthian pilasters, which carry entablature with garland and wreath frieze and overhanging denticulated cornice.
61. 2206-4th St. Ca. 1880. Two-story three bay brick row with flat roof. Ground floor altered. Projecting cornice between floors is uniform throughout this half of the block. Second floor windows are round arched and double hung with wooden louvered shutters.
62. 2208-4th St. Ca. 1880. Two-story three-bay brick row; first floor altered below transom. Second floor windows set in segmental arches. Brick panels and corbel tables in entablature.
63. Citizens Bank Building (2212-2214 - 4th St.). 1901. One of the more remarkable district buildings. Two-story brick with parapet. Applied metal facade on ground floor conceals elliptical and round-arch entrances of rusticated rock-faced ashlar. Coupled flat-arch windows with decorated labels in second floor exterior bays; four round-arch windows in center bay arcaded on pilasters. Full entablature with projecting denticulated cornice.
64. Meyerblock (406-23rd Ave.). 1889. Outstanding High Victorian Gothic corner building. Seven bays by two with angled corner entrance bay with round arch. Square clock tower originally had hipped roof with deck, as did projecting end pavilion on 23rd Ave. facade. Constructional color employed through brickwork and architectural terra-cotta.
65. Brookshire Building (401-23rd Ave.). 1870. Two-story brick corner with stuccoed facade. Originally an outstanding Italianate photo gallery and office building that was a pivotal structure in the early central business district. Segmental-arch bays, bracketed overhanging cornice, and corner pavilion with skylight are features now hidden behind the stuccoed overcoat.
66. 2306-4th St. Ca. 1880. Two-story brick row with flat roof. Center entrance; brick veneer facade.
67. 2310-4th St. Ca. 1880. Two-story three-bay brick row with parapet, painted green. Exterior bays framed by pilasters with stepped capitals, which rise through both levels to support overhanging denticulated cornice. Entablature curves to form round arch over center bay as does balustraded parapet.

UNITED STATES DEPARTMENT OF THE INTERIOR  
NATIONAL PARK SERVICE

**NATIONAL REGISTER OF HISTORIC PLACES  
INVENTORY -- NOMINATION FORM**

<b>FOR NPS USE ONLY</b>	
RECEIVED	28 AUG 1979
DATE ENTERED	DEC 18 1979

CONTINUATION SHEET

ITEM NUMBER

7

PAGE

17

7 - DESCRIPTION

68. 2207-5th St. Ca. 1900. Two-story brick row building. Plate-glass storefront; second floor has plain stuccoed facade.
69. 2209-5th St. Ca. 1900. Two-story brick row; recessed center entrance. Second floor has stuccoed overcoat with pedimented parapet.
70. Rosenbaum Building (2213-2219 - 5th St.). 1900. Impressive focal district building; occupied one-fourth of the block. Three-story brick; nine bays by five. Ground floor facades altered for storefronts; rusticated, rock-faced ashlar remains in various locations. Stone course between first and second floors supports pilaster strips which frame each bay and rise through upper floors and parapet to the cornice. Pilasters separate second-floor flat-arch windows; round arch third-floor windows are arcaded on pilasters. Architectural terra-cotta evident in decorated window aprons and pilaster capitals. Arched corbel tables at architrave and cornice.
71. Kress Building (2301-5th St.). Ca. 1905. Three-story brick corner building; fenestration now enclosed and architectural details removed. Originally three bays by five; segmental and round arches with fanlights. Corner turret had tent roof.
72. 2305-5th St. Ca. 1900. Two-story brick row building; concrete overcoat hides any fenestration or features.
73. 2307-5th St. Ca. 1900. One-story brick row with flat roof. Projecting courses at architrave and cornice.
74. 2311-5th St. Ca. 1900. One-story white-brick row. Central double doors flanked by high windows with glass blocks below. Frieze area has raised brick panel with stone corner blocks, Sullivanesque terra-cotta decorations at building sides. Short parapet with battlemented corners capped with stone.
75. 2315-5th St. Ca. 1900. Narrow one-story brick row with stuccoed facade above center door.
76. 2401-5th St. Ca. 1900. One-story brick row, painted white. Off-center entrance flanked by plate-glass windows. Raised brick frieze panel; stepped and shaped gable on short parapet.

UNITED STATES DEPARTMENT OF THE INTERIOR  
NATIONAL PARK SERVICE

**NATIONAL REGISTER OF HISTORIC PLACES  
INVENTORY -- NOMINATION FORM**

<b>FOR NPS USE ONLY</b>	
RECEIVED	28 AUG 1979
DATE ENTERED	DEC 18 1979

CONTINUATION SHEET

ITEM NUMBER

7

PAGE

18

7 - DESCRIPTION

77. 2403-5th St. Ca. 1900. One-story brick row with flat roof. Recessed center door; projecting courses at architrave and cornice.
78. 2405-5th St. Ca. 1900. Two-story three-bay brick row; painted green, stuccoed and scored. Lower bays are flat arched with semicircular archivolt trim. Upper windows are double hung and set in segmental arches with hoodmolds ending in corbel tables. Molded denticulated cornice topped by short parapet.
79. 2407-5th St. Ca. 1900. Two-story three-bay brick, stuccoed and scored. Projecting cornice between floors; second floor segmental arches have dripstones supported by corbels. Projecting architrave course; molded, denticulated cornice.
80. 2409-5th St. Ca. 1900. One-and-a-half-story brick row building. Wide transom over center entrance; three large inset brick panels in frieze; corbeled cornice.
81. Beal's Cafe (2411-5th St.). Ca. 1910. Two-story two-bay brick row; first floor modified. Projecting cornice between floors; coupled windows in upper bays with labels formed by projecting brick courses. Overhanging cornice supported by paired brackets.
82. 2413-5th St. Ca. 1900. One-story row building, brick common bond. Second floor concrete addition; projecting course at original cornice height.
83. 2415-5th St. Ca. 1900. One-story brick row with stuccoed facade. Fenestration altered; one remaining double-leaf door with transom set in segmental arch. Projecting courses at cornice.
84. 2419-5th St. Ca. 1870. Two-story brick corner building; brick veneer first floor, second floor stuccoed. Upper bays are segmentally arched; front facade bays slightly recessed between pilaster strips, which support molded cornice.
85. Marks, Rothenberg and Co. (2200-5th St.). 1889. Outstanding anchor building of the district hidden behind applied metal grill facade (1960). Early megastructure complex occupies half a city block, and includes the Grand Opera House. Five-story brick, painted white, five bays by thirteen bays. Monumental round-arch first-floor entrances now concealed by marble veneer facade. Second- and third-story bays, east facade, set in large round arches arcaded on pilasters. Segmental and round-arch fenestration highlighted by stone trim (labels, archivolts, sills, projecting courses) was originally emphasized by the contrasting red brick. Angled, southeast corner was topped by an octagonal tower with bell-shaped roof. Square tower, cupola, and center shaped gable have also been removed. 25-by-40-foot open interior courtyard, extending more than 100 feet to glass-covered roof, now enclosed.

UNITED STATES DEPARTMENT OF THE INTERIOR  
NATIONAL PARK SERVICE

**NATIONAL REGISTER OF HISTORIC PLACES  
INVENTORY -- NOMINATION FORM**

FOR NPS USE ONLY	
RECEIVED	28 AUG 1979
DATE ENTERED	DEC 18 1979

CONTINUATION SHEET

ITEM NUMBER 7 PAGE 19

7 - DESCRIPTION

86. Grand Opera House (2206-5th St.). 1889. Entered on the National Register of Historic Places, 1972. Part of no. 85 above.
87. 2212-5th St. 1892. Four-story, three-bay brick row; two street facades. Front facade (6th St.) has mock mansard roof which corresponds with added fourth floor on 5th St. facade. Bays are slightly recessed between pilasters; smaller center bay has short pediment with date inscription. 5th St. facade originally had overhanging cornice supported by large brackets and topped by semicircular gable before fourth floor was added.
88. S. H. Kress and Co. (2214-5th St.). 1934. Four-story, three-bay, Art Deco building with two street facades. White brick framed by stone courses and edges decorated with polychromatic terra-cotta. Tall narrow center bays with decorated spandrels give vertical emphasis, as does tall chimney on 6th St. facade. Later two-story addition at northwest corner of block is sympathetic in building materials but lacks stylistic attributes.
89. 501-23rd Ave. Ca. 1900. Two-story brick corner building; added stuccoed facade with stepped parapet conceals original front facade fenestration. Four side-facade bays contain segmental-arch windows grouped in pairs by pilaster strips, which rest on projecting course. Photographic evidence shows this building was three stories with lantern-and-dome corner tower.
90. 503-23rd Ave. Ca. 1900. Two-story three-bay brick row building with stuccoed facade (fenestration enclosed but still visible). Pilasters frame slightly recessed bays containing segmental-arch windows coupled at center bay. Overhanging bracketed cornice and frieze with swags has been painted black. Short parapet with battlement and shaped gable.
91. 505-23rd Ave. Ca. 1900. Identical to 90.
92. 507-23rd Ave. Ca. 1900. Two-story brick row building. Concrete wash conceals all features except inset panels in frieze.
93. 511-23rd Ave. Ca. 1900. One-and-a-half-story brick row building. Modified entrance, stuccoed attic area.

UNITED STATES DEPARTMENT OF THE INTERIOR  
NATIONAL PARK SERVICE

**NATIONAL REGISTER OF HISTORIC PLACES  
INVENTORY -- NOMINATION FORM**

<b>FOR NPS USE ONLY</b>	
RECEIVED	28 AUG 1979
DATE ENTERED	DEC 18 1979

CONTINUATION SHEET

ITEM NUMBER

7

PAGE

20

7 - DESCRIPTION

94. Merchants and Farmers Bank (517-23rd Ave.). 1924. Two-story blond-brick corner building with Sullivan-esque details. Front facade has round decorated stone arch over flat-arch entrance with recessed central door. Flat-arch double-hung windows set in sashes trimmed with stone and terra-cotta. Terra-cotta ornamentation at building corners.
95. Brookshire Ice Cream Co. (512-24th Ave.). 1924. One-story three-bay industrial building. Red brick with stone trim. Center bay serves as garage entrance; exterior bays are topped by segmental parapets.
96. 2308-5th St. Ca. 1900. Two-story brick corner building, entire facade stuccoed; part of Brookshire Ice Cream complex. Stylized dentils below roof line on west facade.
97. 509-24th Ave. Ca. 1900. One-story brick row. Double-leaf doors flanked by storefront windows with transoms. Brick panels in frieze.
98. 507-24th Ave. Ca. 1906. Small, one-story brick row building.
99. Mississippi Medical College (2400-5th St.). Ca. 1906. Focal building of this part of the district. Three-story brick corner building, painted white. Flat roof hidden by parapet which originally supported projecting cornice. Irregularly spaced first floor bays, square column supports corner entrance. Eight upper bays and front facade are flat-arched at second floor, round arched with projecting sills and architrave-impost course forming dripstones at third floor. This same fenestration is found on the side facade, but interior windows of the second floor are coupled and not aligned vertically with upper bays.
100. 2404-5th St. Ca. 1900. Three-story, two-bay brick row building with parapeted roof. Quoined piers at first floor corners, projecting cornice between first and second floors. Overhanging, bracketed cornice has been removed.
101. 2408-5th St. 1900. Three-story brick row with overhanging, bracketed cornice. First floor modified, half of second floor hidden by theater marquee. Eight bays in upper floors framed by pilasters with terra-cotta capitals. Third floor windows rest on stone course.

UNITED STATES DEPARTMENT OF THE INTERIOR  
NATIONAL PARK SERVICE

**NATIONAL REGISTER OF HISTORIC PLACES  
INVENTORY -- NOMINATION FORM**

FOR NPS USE ONLY	
RECEIVED	28 AUG 1979
DATE ENTERED	DEC 18 1979

CONTINUATION SHEET

ITEM NUMBER 7 PAGE 21

7 - DESCRIPTION

102. E. E. Howard Building (2410-2412 - 5th St.). 1910. Two-story brick row building with short parapet. Center round-arch entrance with keystone and impost blocks flanked by modified storefronts. Four flat-arch upper windows rest on stone sills. Molded architrave; projecting cornice with dentils.
103. E. F. Young Hotel (500-25th Ave.). 1946. Two-story stuccoed building at corner of row. Four bays by three highlighted by white trim, which is found at string courses, window sills, and lintels; inset panels between floors, pilaster strips, and sawtooth cornice. Not normally eligible for National Register nomination because of age, but definitely a contributory structure.
104. 506-5th St. Ca. 1880. Two-story brick building at end of short row, six bays over three. Second floor windows rest on string course. Small windows and raised brick panel in frieze.
105. 523-25th Ave. Ca. 1875. One-and-a-half-story brick building with concrete wash at corner of row. Projecting courses at architrave and cornice.
106. 521-25th Ave. Ca. 1875. One-and-a-half-story brick row, concrete-block facade.
107. 519-25th Ave. Ca. 1875. One-and-a-half-story brick row, stuccoed facade, two segmental-arch bays (double-leaf door and window with transoms).
108. 517-25th Ave. Ca. 1875. One-and-a-half-story row, brick common bond. Same fenestration as 519-25th Ave. Window rests on projecting header course; cornice has projecting stretcher courses with corbels.
109. 515-25th Ave. Ca. 1875. Identical to the two previous buildings, except bays are flat-arched; double doors have top and bottom inset panels.
110. Con Sheehan Building (513-25th Ave.). Ca. 1870. Two-story brick row, painted white. Four bays; two interior lower bays have slightly recessed double-leaf door entrances framed by fluted cast-iron columns. Round arch upper windows have brick archivolts forming pointed arches. Decorative stars, projecting courses at cornice. L. Scully, architect.
111. 511-25th Ave. Ca. 1900. One-story brick row building with stuccoed facade. Center recessed entrance with five-bay transom; projecting courses at cornice; parapeted side facade.

UNITED STATES DEPARTMENT OF THE INTERIOR  
NATIONAL PARK SERVICE

**NATIONAL REGISTER OF HISTORIC PLACES  
INVENTORY -- NOMINATION FORM**

FOR NPS USE ONLY	
RECEIVED	28 AUG 1979
DATE ENTERED	DEC 18 1979

CONTINUATION SHEET

ITEM NUMBER 7 PAGE 22

7 - DESCRIPTION

112. Sheehan Block (501-505 - 25th Ave.). 1870. Historical and architectural focal point of the district although northern third of facade has been replaced with concrete blocks. L. Scully, architect and builder. Two-story brick corner building, nine bays by eight. Building corners are quoined; rusticated pilaster strips at first floor. Center third of front facade has slightly recessed entrance with freestanding cast-iron columns. Upper bays of this section are still round arched; other window arches have been made flat. Brick archivolts forming pointed arches over second floor fenestration creates Gothic Revival effect. Parapet has stepped and shaped gable with large star over center section. Overhanging, bracketed cornice no longer extant.
113. 2505-5th St. 1879. Two-story, stuccoed brick, corner of row. Three bays by eight; upper windows are round arched and rest on projecting sills with end corbels. Cast-iron columns support slightly recessed entrance; projecting courses define entablature L. Scully, architect.
114. 409-25th Ave. Ca. 1870. Two-story brick row, four bays defined at ground floor by square piers in slightly recessed entrance with pressed tin ceiling. One remaining original side door is twelve feet tall with raised panels. Upper floor severely altered by concrete-block and brick-veneer facade replacement.
115. 407-25th Ave. Ca. 1870. Two-story brick row building. Lower fenestration altered, upper floor has concrete wash. Molded cornice.
116. 405-25th Ave. Ca. 1870. Two-story brick building at end of remaining row. Same description as 407-25th Ave.; cast-iron pilasters at first-floor corners are only remaining features.
117. 406-408 - 25th Ave. Ca. 1870. Outstanding building in this area as facade has not been altered. Two-story, three bays over five bays, brick building in short row. Five semicircular arches arcaded on square piers; original fanlight in center entrance arch. Projecting courses between floors support pilaster strips, which define upper bays and rise through entablature to molded, denticulated cornice. Windows set in segmental arches have dripstones with keystones and end corbels. Decorative brickwork includes raised brick panels below windows and on pilaster strips, and diamond patterns in short parapet.
118. Meridian Police Station (2425-6th St.). 1977. Chris Risher, architect. One-, two- and three-story white brick and steel construction which echoes rhythm and scale of neighboring street facades. Awarded State A.I.A. Honor Citation in 1977. Although materials and building techniques differ from neighboring structures, design and location (along district's northern boundary and within a focal block) merit its inclusion.

UNITED STATES DEPARTMENT OF THE INTERIOR  
NATIONAL PARK SERVICE

**NATIONAL REGISTER OF HISTORIC PLACES  
INVENTORY -- NOMINATION FORM**

FOR NPS USE ONLY	
RECEIVED	28 AUG 1979
DATE ENTERED	DEC 18 1979

CONTINUATION SHEET

ITEM NUMBER

7

PAGE

23

7 - DESCRIPTION

Intrusions

119. Southern Pipe and Supply Co. (2109 Front St.) Three-building, cinder-block complex with warehouses fronting railroad tracks built on site of Planters Compress and Warehouse Co. One-story center building flanked by two-story buildings on district street facade.
120. L. H. Conard Furniture Co. (2209 Front St.) Ca. 1965. Two-story brick building with plate-glass and metal facade. This part of the block was destroyed by fire in the 1960s.
121. Empress Barber & Beauty Supply (2211 Front St.) Ca. 1965. Two-story brick; brick-veneer front facade.
122. Corr-Williams Cigar Co. (2223 Front St.) Ca. 1965. Two-story, five bay brick with flat roof.
123. 2501 Front St. Long, one-story, concrete block building. Impact minimized by location at south-western boundary of district.
124. 2216-2224 4th St. Two-story blond brick with plate-glass storefront. Location within the block creates a disruptive impact as materials and scale are totally out of harmony with adjacent facades.
125. 2216-2224 5th St. Two-story blond brick with plate-glass storefronts. Businesses in this intrusive part of the block occupy the site of the Great Southern Hotel, 1890. Intrusion lessened somewhat by location at block's corner.
126. 404 25th Ave. One-story concrete block gas station; side facade has been incorporated into 25th Ave. street facade.





*MERIDIAN Multiple Resource AREA  
(Partial Inventory)*

MERIDIAN URBAN CENTER HISTORIC DISTRICT

Meridian, Lauderdale County, Mississippi

Jody Cook

November, 1978

Mississippi Department of Archives and History

400-500 block 22nd Avenue, west side, looking  
north.

Photo 1 of 44

28 AUG 1979

DEC 18 1979



*MERIDIAN Multiple Resource Area (Partial Inventory)*

MERIDIAN URBAN CENTER HISTORIC DISTRICT

Meridian, Lauderdale County, Mississippi

Jody Cook

November, 1978

Mississippi Department of Archives and History

2100 block Front Street, north side, looking  
west.

Photo 2 of 44

28 AUG 1979

DEC. 18 1979



*MERIDIAN Multiple Resource Area*  
*(Archival Inventory)*

MERIDIAN URBAN CENTER HISTORIC DISTRICT

Meridian, Lauderdale County, Mississippi

Jody Cook

November, 1978

Mississippi Department of Archives and History

2300 and 2200 block of 6th Street, south side,  
looking east.

Photo 3 of 44

3. AUG 1979

28 AUG 1979

DEC. 18 1979



*Meridian Multiple Resource Area*  
*Partial Inventory*  
MERIDIAN URBAN CENTER HISTORIC DISTRICT

Meridian, Lauderdale County, Mississippi

Jody Cook

November, 1978

Mississippi Department of Archives and History

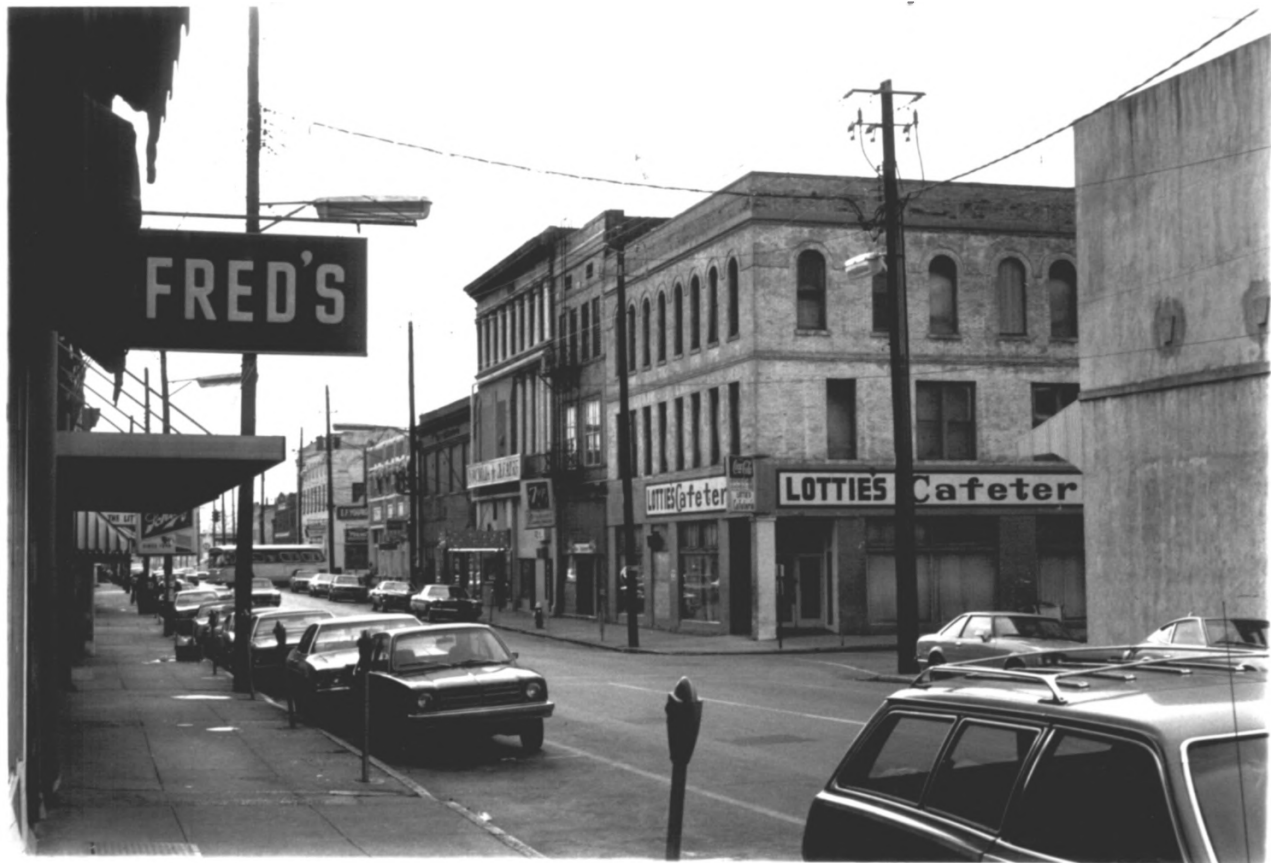
2200 block 5th Street, north side, looking  
east.

Photo 4 of 44

28 AUG 1979

DEC 18 1979





*Meridian Multiple Resource Area  
(Partial Inventory)*

MERIDIAN URBAN CENTER HISTORIC DISTRICT

Meridian, Lauderdale County, Mississippi

Jody Cook

November, 1978

Mississippi Department of Archives and History

2400 block 5th Street, north side, looking west

Photo 5 of 44

28 AUG 1979

DEC 18 1979



*MERIDIAN Multiple Resource AREA (Partial Inventory)*

MERIDIAN URBAN CENTER HISTORIC DISTRICT  
Meridian, Lauderdale County, Mississippi  
Jody Cook

November, 1978

Mississippi Department of Archives and History  
2400 block 5th Street, north side, looking  
west.

Photo 6 of 44

28 AUG 1979

DEC 18 1979



*Meridian Multiple Resource Area  
(Partial Inventory)*

MERIDIAN URBAN CENTER HISTORIC DISTRICT

Meridian, Lauderdale County, Mississippi

Jody Cook

November, 1978

Mississippi Department of Archives and History

2200 block Front Street, north side, looking  
west.

Photo 7 of 44

28 AUG 1979

DEC 18 1979



*Meridian Multiple Resource Area  
Partial Inventory*

MERIDIAN URBAN CENTER HISTORIC DISTRICT

Meridian, Lauderdale County, Mississippi

Jody Cook

November, 1978

Mississippi Department of Archives and History

Baum Block, 2500 Front Street

Photo 8 of 44

28 AUG 1979

DEC 18 1979





*MERIDIAN Multiple Resource AREA*  
*(Project Inventory)*  
MERIDIAN URBAN CENTER HISTORIC DISTRICT

Meridian, Lauderdale County, Mississippi

Jody Cook

November, 1978

Mississippi Department of Archives and History

Armour and Company, 23-27 Front Street

Photo 9 of 44

28 AUG 1979

DEC 18 1979



*MERIDIAN Multiple Resource Area  
(Partial Inventory)*

MERIDIAN URBAN CENTER HISTORIC DISTRICT

Meridian, Lauderdale County, Mississippi

Jody Cook

November, 1978

Mississippi Department of Archives and History

2324 Front Street

Photo 10 of 44

28 AUG 1979

DEC 18 1979



*MERIDIAN Multiple Resource AREA (Partial Inventory)*

MERIDIAN URBAN CENTER HISTORIC DISTRICT

Meridian, Lauderdale County, Mississippi

Jody Cook

November, 1978

Mississippi Department of Archives and History

Masonic Temple, 2215-2225 4th Street

Photo 11 of 44

28 AUG 1979

DEC 18 1979



*MERIDIAN Multiple Resource AREA*

MERIDIAN URBAN CENTER HISTORIC DISTRICT

Meridian, Lauderdale County, Mississippi

*(Partial Inventory)*

Jody Cook

November, 1978

Mississippi Department of Archives and History

2300 block Front Street, south side, looking  
west.

Photo 12 of 44

28 AUG 1979

DEC 18 1979





*Meridian Multiple Resource Area  
(Partial Inventory)*

MERIDIAN URBAN CENTER HISTORIC DISTRICT

Meridian, Lauderdale County, Mississippi

Jody Cook

November, 1978

Mississippi Department of Archives and History

2300 block Front Street, north side, looking  
west.

Photo 13 of 44

28 AUG 1979

DEC 18 1979



*Meridian Multiple Resource Area  
(Partial Inventory)*

MERIDIAN URBAN CENTER HISTORIC DISTRICT

Meridian, Lauderdale County, Mississippi

Jody Cook

November, 1978

Mississippi Department of Archives and History

2200 block 4th Street, north side, looking east

Photo 14 of 44

28 AUG 1979

DEC 18 1979



*MERIDIAN Multiple Resource Area  
(Partial Inventory)*

MERIDIAN URBAN CENTER HISTORIC DISTRICT

Meridian, Lauderdale County, Mississippi

Jody Cook

November, 1978

Mississippi Department of Archives and History

400 block of 23rd Avenue, east side, looking  
south.

Photo 15 of 44

28 AUG 1979

DEC 18 1979